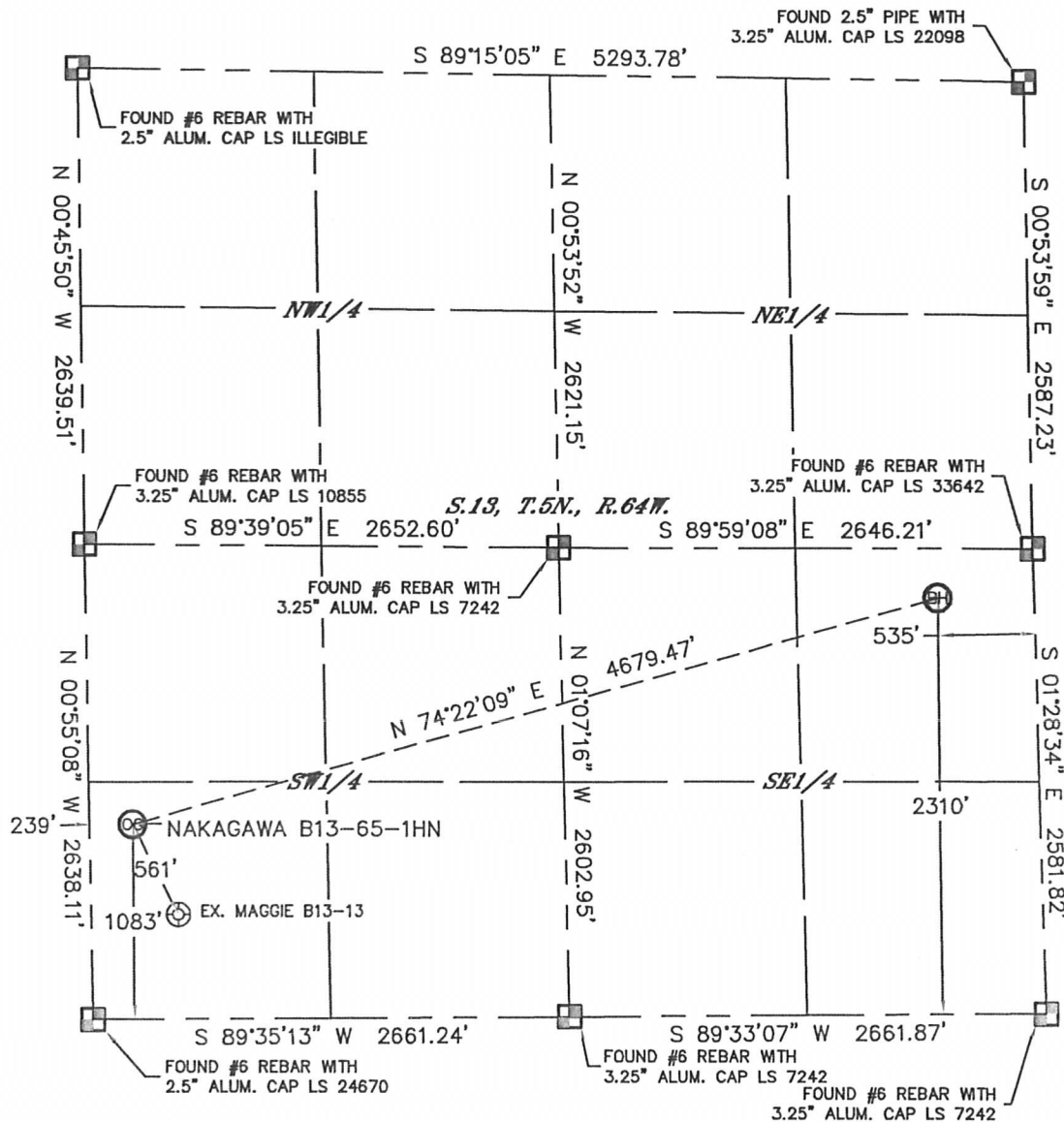


WELL LOCATION CERTIFICATE

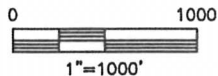
THIS MAP DOES NOT REPRESENT A BOUNDARY SURVEY

SECTION: 13
TOWNSHIP: 5N
RANGE: 64W



In accordance with a request from Mike Rodine with Noble Energy Inc. Lat40°, Inc. has determined the surface location of the NAKAGAWA B13-65-1HN to be 1083' from the SOUTH line and 2310' from the WEST line and the bottom hole to be 535' from the SOUTH line and 535' from the EAST line as measured at right angles from the section lines of Section 13, Township 5 North, Range 64 West of the Sixth Principal Meridian, County of Weld, State of Colorado.

I hereby state that this Well Location Certificate was prepared by me, or under my direct supervision, that the fieldwork was completed on 6/28/2012, for and on behalf of Noble Energy Inc. That this is not a Land Survey Plat or an Improvement Survey Plat, and that it is not to be relied upon for establishment of fence, building, or other future Improvement lines.



NOTE:

- 1) Bearings shown are Grid Bearings of the Colorado State Plane Coordinate System, North Zone, North American Datum 1983/2007. The lineal dimensions as contained herein are based upon the "U.S. Survey Foot."
- 2) Ground elevations are based on an observed GPS elevation (NAVD 1988 DATUM).
- 3) NEAREST EXISTING WELL: MAGGIE B13-13, 561'
- 4) IMPROVEMENTS: See LOCATION DRAWING for all visible Improvements within 400' of disturbed area.
- 5) SURFACE USE: CROPLAND
- 6) INSTRUMENT OPERATOR: ADAM KELLY

NOTE

According to Colorado law, you must commence any legal action based upon any defect in this W.L.C. within three years after you discover such defect. In no event, may any action based upon any defect in this survey be commenced more than ten years after the date of the certificate shown hereon. (13-80-105 C.R.S.)

LEGEND

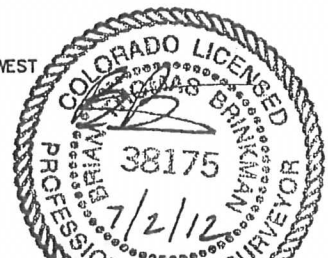
- = ALIQUOT MONUMENT AS DESCRIBED
- = CALCULATED POSITION

SURFACE LOCATION

LAT: 40.394997N
LONG: 104.507237W
PDOP: 2.3
ELEV: 4570'
1/4, 1/4: SW1/4SW1/4
NEAREST PROPERTY LINE: 239' WEST

BOTTOM HOLE

LAT: 40.398317N
LONG: 104.491007W

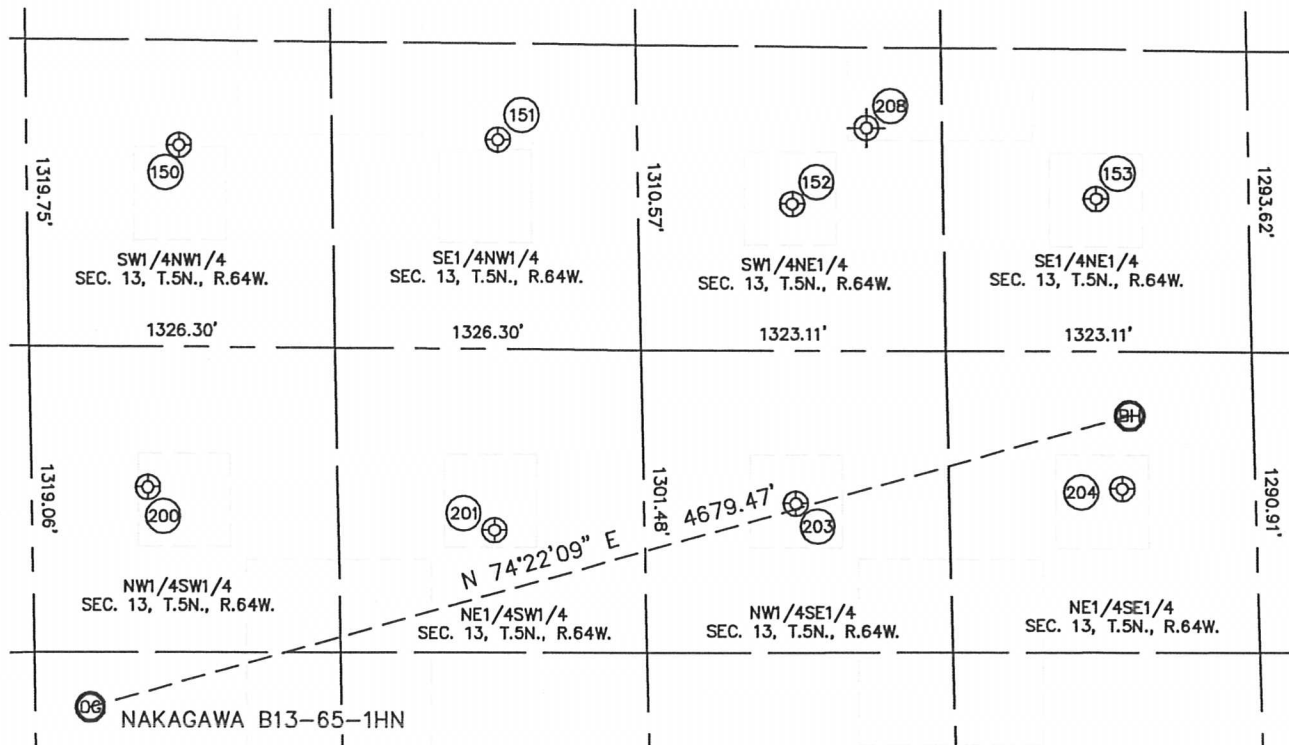


Brian T. Brinkman—On Behalf of Lat40°, Inc.
Colorado Licensed Professional Surveyor No. 38175
DATE: rev 7/2/2012
PROJECT#: 2012029

SITE SKETCH

NAKAGAWA B13-65-1HN

SECTION: 13
TOWNSHIP: 5N
RANGE: 64W



(200)

MAGGIE B13-12
NW1/4SW1/4
2028' FSL
504' FWL
LAT-40.39758°N
LONG-104.50629°W
PDOP: 3.7
ELEV: 4582'

(201)

FORD 23-13
NE1/4SW1/4
1836' FSL
2005' FWL
LAT-40.39703°N
LONG-104.50090°W
PDOP: 3.0
ELEV: 4584'

(203)

NAKAGAWA PM B13-10
NW1/4SE1/4
1943' FSL
1992' FEL
LAT-40.39731°N
LONG-104.49621°W
PDOP: 4.2
ELEV: 4572'

(204)

NAKAGAWA B13-9
NE1/4SE1/4
1997' FSL
576' FEL
LAT-40.39745°N
LONG-104.49113°W
PDOP: 2.2
ELEV: 4569'

(150)

MILLER DEPPE 12-13
SW1/4NW1/4
1768' FNL
661' FWL
LAT-40.40161°N
LONG-104.50575°W
PDOP: 1.3
ELEV: 4590'

(151)

MILLER DEPPE 22-13
SE1/4NW1/4
1725' FNL
2045' FWL
LAT-40.40164°N
LONG-104.50078°W
PDOP: 1.5
ELEV: 4590'

(152)

LOHR 32-13
SW1/4NE1/4
1981' FNL
1978' FEL
LAT-40.40085°N
LONG-104.49621°W
PDOP: 1.1
ELEV: 4581'

(153)

LOHR 13-4
SE1/4NE1/4
1939' FNL
659' FEL
LAT-40.40087°N
LONG-104.49147°W
PDOP: 1.4
ELEV: 4574'

(208)

LOHR 13-1
(Plugged & Abandoned)
SW1/4NE1/4
1650' FNL (COGCC)
1650' FEL (COGCC)
LAT-40.402016°N (COGCC)
LONG-104.495053°W (COGCC)
PDOP: N/A
ELEV: 4580' (COGCC)

