

# **LEGEND:**

 PROPOSED LOCATION



**ConocoPhillips Company**

**MURPHY FAMILY 4-64 #25-1H**  
**SECTION 25, T4S, R64W, 6th P.M.**  
**660' FNL 244' FWL**



**Uintah Engineering & Land Surveying**  
**85 South 200 East Vernal, Utah 84078**  
**(435) 789-1017 \* FAX (435) 789-1813**

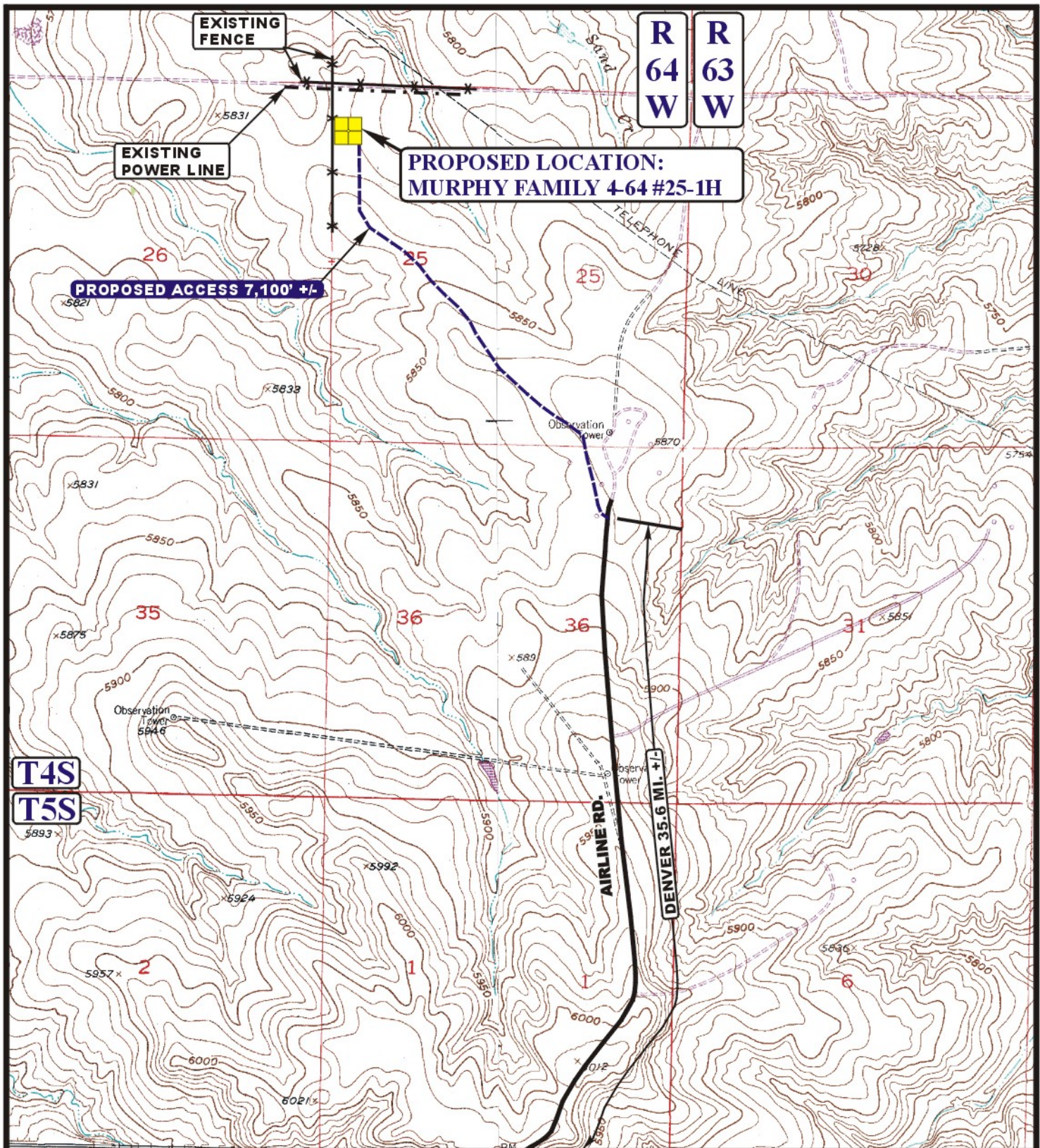
**ACCESS ROAD**  
**MAP**

**07 25 12**  
 MONTH DAY YEAR

SCALE: 1:100,000 DRAWN BY: J.L.H. REVISED: 10-05-12







# **LEGEND:**

- EXISTING ROAD
- PROPOSED ACCESS ROAD
- EXISTING FENCE
- EXISTING POWER LINE



**Utah Engineering & Land Surveying**  
 85 South 200 East Vernal, Utah 84078  
 (435) 789-1017 \* FAX (435) 789-1813



**ConocoPhillips Company**

**MURPHY FAMILY 4-64 #25-1H**  
**SECTION 25, T4S, R64W, 6th P.M.**  
**660' FNL 244' FWL**

**ACCESS ROAD  
MAP**

**07 25 12**  
 MONTH DAY YEAR

**B  
TOPO**

SCALE: 1" = 2000' DRAWN BY: J.L.H. REVISED: 10-05-12