



XTO - Wellbore Diagram

Well Name: Apache Canyon 14-07

API/UWI 05071079580000	E/W Dist (ft) 1,352.0	E/W Ref FEL	N/S Dist (ft) 2,051.0	N/S Ref FNL	Location T34S-R68W-S14	Field Name Purgatoire River	County Las Animas	State Colorado
Well Configuration Type Vertical	XTO ID B 94775	Orig KB Elev (ft) 8,381.00	Gr Elev (ft) 8,381.00	KB-Grd (ft) 0.00	Spud Date 2/1/2004	PBTD (All) (ftKB) Original Hole - 2189.0	Total Depth (ftKB) 2,251.0	Method Of Production Beam

Well Config: Vertical - Original Hole, 10/2/2012 11:36:08 AM

Schematic - Actual		Incl	ftKB (TVD)	ftKB (MD)	Zones						
					Zone	Top (ftKB)		Btm (ftKB)			
				-8	Raton	621.0		1,478.0			
				0	Raton Conglomerate	1,690.0		1,709.0			
				8	Vermejo	1,785.0		2,011.0			
				12	Casing Strings						
				16	Casing Description	OD (in)	Wt (lbs/ft)	String Grade	Top Connection	Set Depth (ftK...	
				24	Surface	8 5/8	24.00	J-55		318.5	
				30	Casing Description	OD (in)	Wt (lbs/ft)	String Grade	Top Connection	Set Depth (ftK...	
				286	Production	5 1/2	15.50	J-55		2,216.0	
				318	Cement						
				319	Description	Type			String		
				319	Surface Casing Cement	casing			Surface, 318.5ftKB		
				323	Comment						
				408	Description	Type			String		
				621	Production Casing Cement	casing			Production, 2,216.0ftKB		
				623	Comment						
				631	TOC unknown.						
				633	Description	Type			String		
				684	Cement Squeeze	squeeze			Production, 2,216.0ftKB		
				687	Comment						
				720	TOC unknown.						
				721	Description	Type			String		
				800	Cement Squeeze	casing			Production, 2,216.0ftKB		
				802	Comment						
				822							
				823	Description	Type			String		
				873	Cement Squeeze	casing			Production, 2,216.0ftKB		
				875	Comment						
				960	PT to 550 psig. 100# press loss in 25 min.						
				962							
				1,385	Perforations						
				1,415							
				1,416							
				1,418							
				1,419	Date	Top (ftKB)	Btm (ftKB)	Shot Dens (shots/ft)	Hole Diameter (in)	Phasing (°)	
				1,448	7/14/2006	621.0	623.0	6.0		120	
				1,450	7/14/2006	631.0	633.0	6.0		120	
				1,476	7/14/2006	684.0	687.0	9.0		120	
				1,478	7/14/2006	720.0	721.0	3.0	0.460	120	
				1,681	7/13/2006	800.0	802.0	3.0	0.460	120	
				1,690	7/13/2006	822.0	823.0	3.0	0.460	120	
				1,691	7/13/2006	873.0	875.0	3.0	0.460	120	
				1,700	7/13/2006	960.0	962.0	3.0	0.460	120	
				1,709	7/9/2004	1,385.0	1,385.0	3.0		90	
				1,719	7/13/2006	1,415.0	1,416.0	3.0	0.460	120	
				1,785	7/13/2006	1,417.5	1,418.5	3.0	0.460	120	
				1,786	7/13/2006	1,448.0	1,450.0	3.0	0.460	120	
				1,795	7/13/2006	1,476.0	1,478.0	3.0	0.460	120	
				1,800	7/12/2006	1,690.0	1,709.0	4.0			
				1,817	7/2/2004	1,700.0	1,700.0	3.0		90	
				1,818	2/23/2004	1,785.0	1,786.0	4.0		90	
				1,832	2/23/2004	1,795.0	1,800.0	4.0		90	
				1,834	2/23/2004	1,817.0	1,818.0	4.0		90	
				2,003	2/23/2004	1,832.0	1,834.0	4.0		90	
				2,011	2/23/2004	1,832.0	1,834.0	4.0		90	
				2,050	2/20/2004	2,003.0	2,011.0	4.0		90	
				2,102							
				2,103	Tubing Strings						
				2,105	Tubing Description		Run Date		Set Depth (ftKB)		
				2,115	Tubing - Production		8/31/2012		2,133.7		
				2,134	Tubing Components						
				2,185							
				2,186	Item Description	Jts	Model	OD (in)	Wt (lbs/...	Top Thread	
				2,189	Tubing	64	T&C Upset	2 3/8	4.70	J-55	
				2,215							
				2,216	Seat Nipple	1		2 3/8		J-55	
				2,251							
				2,251							

Top (MD):621,
Des:Raton

Top (MD):1,690,
Des:Raton
Conglomerate

Top (MD):1,785,
Des:Vermejo

PBTD,
2,189

TD, 2,251

Item Description	Jts	Model	OD (in)	Wt (lbs/...	Gra...	Top Thread	Len (ft)	Top (ftKB)	Btm (ftKB)
Tubing	64	T&C Upset	2 3/8	4.70	J-55	8RD EUE	2,102.40	0.0	2,102.4
Seat Nipple	1		2 3/8		J-55	8RD EUE	1.10	2,102.4	2,103.5

PBTD,
2,189

TD, 2,251

Top (MD):621,
Des:Raton

Top (MD):1,690,
Des:Raton
Conglomerate

Top (MD):1,785,
Des:Vermejo

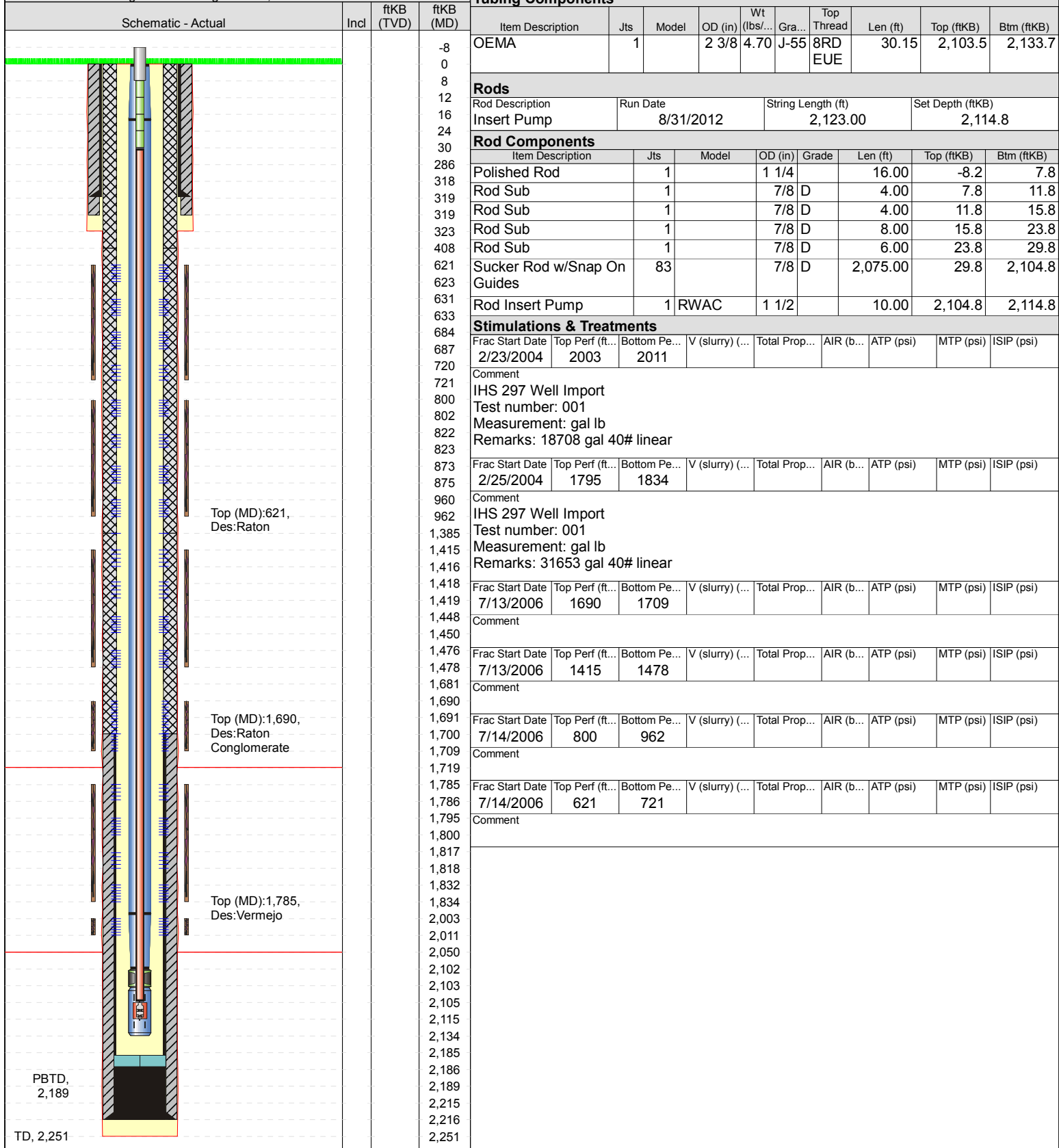


XTO - Wellbore Diagram

Well Name: Apache Canyon 14-07

API/UWI 05071079580000	E/W Dist (ft) 1,352.0	E/W Ref FEL	N/S Dist (ft) 2,051.0	N/S Ref FNL	Location T34S-R68W-S14	Field Name Purgatoire River	County Las Animas	State Colorado
Well Configuration Type Vertical	XTO ID B 94775	Orig KB Elev (ft) 8,381.00	Gr Elev (ft) 8,381.00	KB-Grd (ft) 0.00	Spud Date 2/1/2004	PBTD (All) (ftKB) Original Hole - 2189.0	Total Depth (ftKB) 2,251.0	Method Of Production Beam

Well Config: Vertical - Original Hole, 10/2/2012 11:36:08 AM



Tubing Components

Item Description	Jts	Model	OD (in)	Wt (lbs/...)	Gra...	Top Thread	Len (ft)	Top (ftKB)	Btm (ftKB)
OEMA	1		2 3/8	4.70	J-55	8RD EUE	30.15	2,103.5	2,133.7

Rods

Rod Description	Run Date	String Length (ft)	Set Depth (ftKB)
Insert Pump	8/31/2012	2,123.00	2,114.8

Rod Components

Item Description	Jts	Model	OD (in)	Grade	Len (ft)	Top (ftKB)	Btm (ftKB)
Polished Rod	1		1 1/4		16.00	-8.2	7.8
Rod Sub	1		7/8	D	4.00	7.8	11.8
Rod Sub	1		7/8	D	4.00	11.8	15.8
Rod Sub	1		7/8	D	8.00	15.8	23.8
Rod Sub	1		7/8	D	6.00	23.8	29.8
Sucker Rod w/Snap On Guides	83		7/8	D	2,075.00	29.8	2,104.8
Rod Insert Pump	1	RWAC	1 1/2		10.00	2,104.8	2,114.8

Stimulations & Treatments

Frac Start Date	Top Perf (ft...)	Bottom Pe...	V (slurry) (...)	Total Prop...	AIR (b...	ATP (psi)	MTP (psi)	ISIP (psi)
2/23/2004	2003	2011						

Comment

IHS 297 Well Import
Test number: 001
Measurement: gal lb
Remarks: 18708 gal 40# linear

Frac Start Date	Top Perf (ft...)	Bottom Pe...	V (slurry) (...)	Total Prop...	AIR (b...	ATP (psi)	MTP (psi)	ISIP (psi)
2/25/2004	1795	1834						

Comment

IHS 297 Well Import
Test number: 001
Measurement: gal lb
Remarks: 31653 gal 40# linear

Frac Start Date	Top Perf (ft...)	Bottom Pe...	V (slurry) (...)	Total Prop...	AIR (b...	ATP (psi)	MTP (psi)	ISIP (psi)
7/13/2006	1690	1709						

Comment

Frac Start Date	Top Perf (ft...)	Bottom Pe...	V (slurry) (...)	Total Prop...	AIR (b...	ATP (psi)	MTP (psi)	ISIP (psi)
7/13/2006	1415	1478						

Comment

Frac Start Date	Top Perf (ft...)	Bottom Pe...	V (slurry) (...)	Total Prop...	AIR (b...	ATP (psi)	MTP (psi)	ISIP (psi)
7/14/2006	800	962						

Comment

Frac Start Date	Top Perf (ft...)	Bottom Pe...	V (slurry) (...)	Total Prop...	AIR (b...	ATP (psi)	MTP (psi)	ISIP (psi)
7/14/2006	621	721						

Comment