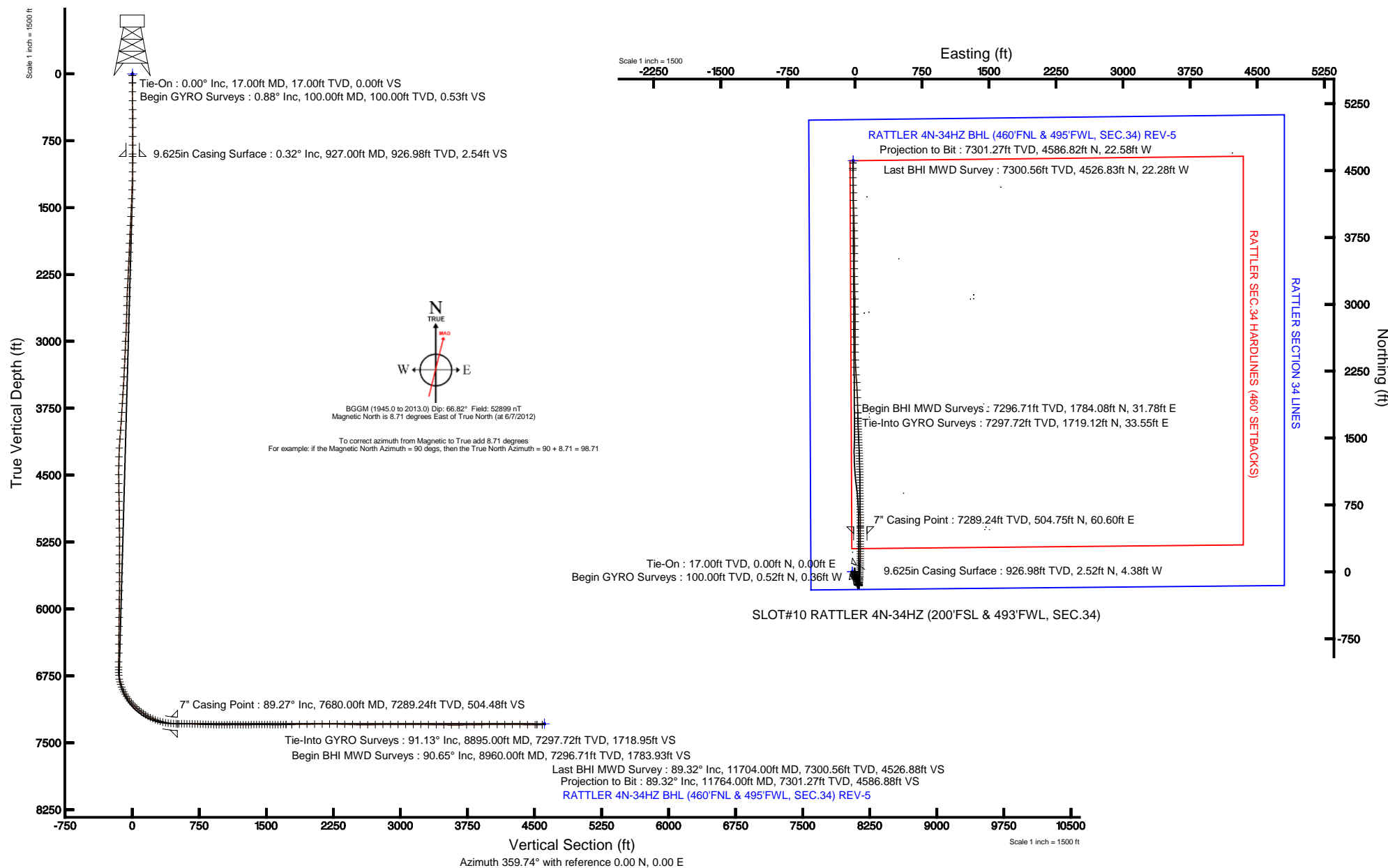


Location:	COLORADO	Slot:	SLOT#10 RATTLER 4N-34HZ (200'FSL & 493'FWL, SEC.34)
Field:	WELD COUNTY (KERR MCGEE)	Well:	RATTLER 4N-34HZ
Facility:	SEC.34-T3N-R66W	Wellbore:	RATTLER 4N-34HZ PWB

Plot reference wellpath is RATTLER 4N-34HZ (REV-E.0) PWP	
True vertical depths are referenced to XTREME 6 (RKB)	Grid System: NAD83 / Lambert Colorado SP, Northern Zone (501), US feet
Measured depths are referenced to XTREME 6 (RKB)	North Reference: True north
XTREME 6 (RKB) to Mean Sea Level: 4984 feet	Scale: True distance
Mean Sea Level to Mud line (At Slot: SLOT#10 RATTLER 4N-34HZ (200FSL & 493FWL, SEC.34)): 0 feet	Depths are in feet
Coordinates are in feet referenced to Slot	Created by: wllsiet02 on 6/21/2012





Actual Wellpath Report

RATTLER 4N-34HZ AWP

Page 1 of 7



REFERENCE WELLPATH IDENTIFICATION

Operator	KERR-MCGEE OIL & GAS ONSHORE LP	Slot	SLOT#10 RATTLER 4N-34HZ (200'FSL & 493'FWL, SEC.34)
Area	COLORADO	Well	RATTLER 4N-34HZ
Field	WELD COUNTY (KERR MCGEE)	Wellbore	RATTLER 4N-34HZ AWB
Facility	SEC.34-T3N-R66W		

REPORT SETUP INFORMATION

Projection System	NAD83 / Lambert Colorado SP, Northern Zone (501), US feet	Software System	WellArchitect® 3.0.2
North Reference	True	User	Wilsjef02
Scale	0.999958	Report Generated	6/21/2012 at 14:20:24
Convergence at slot	0.47° East	Database/Source file	WellArchitectDB/RATTLER_4N-34HZ_AWB.xml

WELLPATH LOCATION

	Local coordinates		Grid coordinates		Geographic coordinates	
	North[ft]	East[ft]	Easting[US ft]	Northing[US ft]	Latitude	Longitude
Slot Location	-1736.99	-158.74	3203714.87	1307389.81	40°10'29.575"N	104°46'15.485"W
Facility Reference Pt			3203859.31	1309127.97	40°10'46.740"N	104°46'13.440"W
Field Reference Pt			3197771.84	1268891.29	40°04'09.600"N	104°47'36.000"W

WELLPATH DATUM

Calculation method	Minimum curvature	XTREME 6 (RKB) to Facility Vertical Datum	4984.00ft
Horizontal Reference Pt	Slot	XTREME 6 (RKB) to Mean Sea Level	4984.00ft
Vertical Reference Pt	XTREME 6 (RKB)	XTREME 6 (RKB) to Mud Line at Slot (SLOT#10 RATTLER 4N-34HZ (200'FSL & 493'FWL, SEC.34))	4984.00ft
MD Reference Pt	XTREME 6 (RKB)	Section Origin	N 0.00, E 0.00 ft
Field Vertical Reference	Mean Sea Level	Section Azimuth	359.72°



Actual Wellpath Report

RATTLER 4N-34HZ AWP

Page 2 of 7



REFERENCE WELLPATH IDENTIFICATION

Operator	KERR-MCGEE OIL & GAS ONSHORE LP	Slot	SLOT#10 RATTLER 4N-34HZ (200'FSL & 493'FWL, SEC.34)
Area	COLORADO	Well	RATTLER 4N-34HZ
Field	WELD COUNTY (KERR MCGEE)	Wellbore	RATTLER 4N-34HZ AWB
Facility	SEC.34-T3N-R66W		

WELLPATH DATA (179 stations) † = interpolated/extrapolated station

MD [ft]	Inclination [°]	Azimuth [°]	TVD [ft]	Vert Sect [ft]	North [ft]	East [ft]	Latitude	Longitude	DLS [°/100ft]	Comments
0.00†	0.000	325.344	0.00	0.00	0.00	0.00	40°10'29.575"N	104°46'15.485"W	0.00	
17.00	0.000	325.344	17.00	0.00	0.00	0.00	40°10'29.575"N	104°46'15.485"W	0.00	Tie-On
100.00	0.880	325.344	100.00	0.53	0.52	-0.36	40°10'29.580"N	104°46'15.490"W	1.06	Begin GYRO Surveys
200.00	0.573	299.158	199.99	1.41	1.40	-1.24	40°10'29.589"N	104°46'15.501"W	0.44	
300.00	0.418	310.293	299.99	1.89	1.88	-1.95	40°10'29.594"N	104°46'15.510"W	0.18	
400.00	0.352	287.826	399.98	2.22	2.21	-2.52	40°10'29.597"N	104°46'15.517"W	0.16	
500.00	0.300	284.393	499.98	2.38	2.37	-3.07	40°10'29.598"N	104°46'15.525"W	0.06	
600.00	0.168	275.170	599.98	2.46	2.45	-3.47	40°10'29.599"N	104°46'15.530"W	0.14	
700.00	0.142	278.199	699.98	2.50	2.48	-3.74	40°10'29.599"N	104°46'15.533"W	0.03	
800.00	0.154	266.585	799.98	2.51	2.49	-3.99	40°10'29.600"N	104°46'15.536"W	0.03	
900.00	0.167	286.375	899.98	2.54	2.52	-4.27	40°10'29.600"N	104°46'15.540"W	0.06	
1000.00	0.777	252.077	999.98	2.38	2.35	-5.05	40°10'29.598"N	104°46'15.550"W	0.65	
1100.00	1.562	220.060	1099.95	1.13	1.10	-6.57	40°10'29.586"N	104°46'15.570"W	0.99	
1200.00	1.817	203.041	1199.91	-1.36	-1.40	-8.07	40°10'29.561"N	104°46'15.589"W	0.56	
1300.00	1.715	178.465	1299.87	-4.31	-4.36	-8.65	40°10'29.532"N	104°46'15.596"W	0.76	
1400.00	1.876	181.451	1399.82	-7.45	-7.49	-8.65	40°10'29.501"N	104°46'15.596"W	0.19	
1500.00	2.738	170.056	1499.74	-11.44	-11.48	-8.28	40°10'29.462"N	104°46'15.592"W	0.97	
1600.00	2.726	167.991	1599.62	-16.12	-16.16	-7.37	40°10'29.415"N	104°46'15.580"W	0.10	
1700.00	2.813	168.188	1699.50	-20.85	-20.88	-6.38	40°10'29.369"N	104°46'15.567"W	0.09	
1800.00	2.809	169.878	1799.38	-25.67	-25.70	-5.44	40°10'29.321"N	104°46'15.555"W	0.08	
1900.00	2.773	165.713	1899.27	-30.43	-30.45	-4.42	40°10'29.274"N	104°46'15.542"W	0.21	
2000.00	2.729	163.651	1999.15	-35.07	-35.08	-3.15	40°10'29.228"N	104°46'15.526"W	0.11	
2100.00	2.649	162.963	2099.04	-39.57	-39.58	-1.80	40°10'29.184"N	104°46'15.508"W	0.09	
2200.00	2.753	157.107	2198.93	-44.00	-44.00	-0.19	40°10'29.140"N	104°46'15.487"W	0.29	
2300.00	2.949	169.228	2298.81	-48.74	-48.74	1.22	40°10'29.093"N	104°46'15.469"W	0.63	
2400.00	2.751	167.433	2398.68	-53.62	-53.61	2.23	40°10'29.045"N	104°46'15.456"W	0.22	
2500.00	2.188	163.773	2498.59	-57.80	-57.78	3.28	40°10'29.004"N	104°46'15.443"W	0.58	
2600.00	1.637	163.451	2598.53	-61.00	-60.98	4.22	40°10'28.972"N	104°46'15.431"W	0.55	
2700.00	1.567	161.801	2698.49	-63.68	-63.65	5.06	40°10'28.946"N	104°46'15.420"W	0.08	
2800.00	2.351	164.759	2798.44	-66.96	-66.93	6.02	40°10'28.914"N	104°46'15.407"W	0.79	
2900.00	2.637	159.004	2898.34	-71.09	-71.06	7.39	40°10'28.873"N	104°46'15.390"W	0.38	
3000.00	2.725	159.123	2998.23	-75.47	-75.43	9.06	40°10'28.830"N	104°46'15.368"W	0.09	
3100.00	2.751	159.503	3098.12	-79.95	-79.89	10.74	40°10'28.785"N	104°46'15.347"W	0.03	
3200.00	2.748	159.916	3198.00	-84.45	-84.39	12.41	40°10'28.741"N	104°46'15.325"W	0.02	
3300.00	2.895	158.723	3297.88	-89.07	-89.00	14.15	40°10'28.696"N	104°46'15.303"W	0.16	
3400.00	3.337	160.299	3397.73	-94.17	-94.09	16.04	40°10'28.645"N	104°46'15.278"W	0.45	
3500.00	3.461	165.478	3497.56	-99.84	-99.75	17.78	40°10'28.589"N	104°46'15.256"W	0.33	
3600.00	3.549	167.907	3597.37	-105.80	-105.70	19.19	40°10'28.530"N	104°46'15.238"W	0.17	
3700.00	3.404	171.919	3697.19	-111.77	-111.67	20.25	40°10'28.471"N	104°46'15.224"W	0.28	
3800.00	4.059	174.734	3796.97	-118.23	-118.13	21.00	40°10'28.408"N	104°46'15.215"W	0.68	
3900.00	3.901	181.515	3896.73	-125.16	-125.06	21.23	40°10'28.339"N	104°46'15.211"W	0.50	
4000.00	4.289	172.427	3996.48	-132.27	-132.16	21.63	40°10'28.269"N	104°46'15.206"W	0.75	
4100.00	4.576	153.854	4096.18	-139.57	-139.45	23.88	40°10'28.197"N	104°46'15.177"W	1.46	
4200.00	3.628	146.630	4195.93	-145.81	-145.67	27.38	40°10'28.135"N	104°46'15.132"W	1.08	
4300.00	1.971	155.334	4295.81	-150.03	-149.88	29.84	40°10'28.094"N	104°46'15.101"W	1.71	



Actual Wellpath Report

RATTLER 4N-34HZ AWP

Page 3 of 7



REFERENCE WELLPATH IDENTIFICATION

Operator	KERR-MCGEE OIL & GAS ONSHORE LP	Slot	SLOT#10 RATTLER 4N-34HZ (200'FSL & 493'FWL, SEC.34)
Area	COLORADO	Well	RATTLER 4N-34HZ
Field	WELD COUNTY (KERR MCGEE)	Wellbore	RATTLER 4N-34HZ AWB
Facility	SEC.34-T3N-R66W		

WELLPATH DATA (179 stations)

MD [ft]	Inclination [°]	Azimuth [°]	TVD [ft]	Vert Sect [ft]	North [ft]	East [ft]	Latitude	Longitude	DLS [°/100ft]	Comments
4400.00	1.030	212.324	4395.77	-152.35	-152.20	30.08	40°10'28.071"N	104°46'15.098"W	1.65	
4500.00	0.512	6.304	4495.77	-152.66	-152.52	29.65	40°10'28.068"N	104°46'15.103"W	1.51	
4600.00	0.738	358.712	4595.76	-151.57	-151.43	29.68	40°10'28.079"N	104°46'15.103"W	0.24	
4700.00	0.823	5.492	4695.76	-150.22	-150.07	29.74	40°10'28.092"N	104°46'15.102"W	0.13	
4800.00	0.887	7.996	4795.74	-148.74	-148.59	29.91	40°10'28.107"N	104°46'15.100"W	0.07	
4900.00	0.586	24.022	4895.74	-147.50	-147.36	30.23	40°10'28.119"N	104°46'15.096"W	0.36	
5000.00	0.684	23.258	4995.73	-146.49	-146.34	30.67	40°10'28.129"N	104°46'15.090"W	0.10	
5100.00	0.886	35.392	5095.72	-145.31	-145.16	31.35	40°10'28.141"N	104°46'15.081"W	0.26	
5200.00	0.871	76.980	5195.71	-144.52	-144.36	32.54	40°10'28.148"N	104°46'15.066"W	0.62	
5300.00	0.947	71.132	5295.70	-144.09	-143.92	34.07	40°10'28.153"N	104°46'15.046"W	0.12	
5400.00	0.419	1.046	5395.69	-143.46	-143.29	34.85	40°10'28.159"N	104°46'15.036"W	0.90	
5500.00	0.117	69.901	5495.69	-143.06	-142.89	34.96	40°10'28.163"N	104°46'15.035"W	0.39	
5600.00	0.700	111.898	5595.69	-143.26	-143.08	35.62	40°10'28.161"N	104°46'15.026"W	0.62	
5700.00	0.793	123.812	5695.68	-143.87	-143.69	36.76	40°10'28.155"N	104°46'15.011"W	0.18	
5800.00	0.845	131.964	5795.67	-144.76	-144.57	37.88	40°10'28.146"N	104°46'14.997"W	0.13	
5900.00	1.059	120.023	5895.65	-145.72	-145.53	39.23	40°10'28.137"N	104°46'14.980"W	0.29	
6000.00	0.621	149.818	5995.64	-146.66	-146.46	40.31	40°10'28.128"N	104°46'14.966"W	0.60	
6100.00	0.874	161.806	6095.64	-147.85	-147.65	40.82	40°10'28.116"N	104°46'14.959"W	0.30	
6200.00	0.654	162.958	6195.63	-149.12	-148.92	41.22	40°10'28.103"N	104°46'14.954"W	0.22	
6300.00	0.874	142.705	6295.62	-150.28	-150.07	41.85	40°10'28.092"N	104°46'14.946"W	0.35	
6400.00	0.849	127.616	6395.61	-151.34	-151.13	42.90	40°10'28.081"N	104°46'14.932"W	0.23	
6500.00	0.844	132.146	6495.60	-152.29	-152.08	44.03	40°10'28.072"N	104°46'14.918"W	0.07	
6600.00	1.048	150.017	6595.58	-153.59	-153.37	45.04	40°10'28.059"N	104°46'14.905"W	0.36	
6660.00	1.230	109.449	6655.57	-154.28	-154.06	45.92	40°10'28.053"N	104°46'14.893"W	1.35	
6690.00	1.101	99.738	6685.57	-154.44	-154.21	46.51	40°10'28.051"N	104°46'14.886"W	0.78	
6720.00	0.901	17.032	6715.56	-154.26	-154.03	46.86	40°10'28.053"N	104°46'14.881"W	4.44	
6750.00	6.684	359.936	6745.48	-152.29	-152.06	46.93	40°10'28.072"N	104°46'14.880"W	19.43	
6795.00	10.493	357.534	6789.97	-145.58	-145.35	46.75	40°10'28.139"N	104°46'14.883"W	8.50	
6825.00	14.732	3.092	6819.24	-139.03	-138.81	46.83	40°10'28.203"N	104°46'14.882"W	14.68	
6855.00	18.357	5.372	6848.00	-130.52	-130.29	47.48	40°10'28.287"N	104°46'14.873"W	12.27	
6885.00	21.827	8.267	6876.17	-120.30	-120.06	48.73	40°10'28.389"N	104°46'14.857"W	12.03	
6915.00	23.715	7.505	6903.83	-108.81	-108.56	50.32	40°10'28.502"N	104°46'14.837"W	6.37	
6945.00	27.889	5.251	6930.83	-95.84	-95.59	51.75	40°10'28.630"N	104°46'14.818"W	14.29	
6975.00	30.870	3.458	6956.97	-81.18	-80.92	52.85	40°10'28.775"N	104°46'14.804"W	10.36	
7005.00	32.466	2.606	6982.50	-65.45	-65.19	53.69	40°10'28.931"N	104°46'14.793"W	5.52	
7035.00	35.482	1.384	7007.38	-48.70	-48.44	54.26	40°10'29.096"N	104°46'14.786"W	10.31	
7065.00	39.052	0.613	7031.25	-30.55	-30.28	54.57	40°10'29.276"N	104°46'14.782"W	12.00	
7095.00	41.635	1.103	7054.11	-11.13	-10.86	54.87	40°10'29.468"N	104°46'14.778"W	8.67	
7125.00	43.755	2.337	7076.16	9.20	9.47	55.48	40°10'29.669"N	104°46'14.770"W	7.60	
7155.00	45.611	2.525	7097.49	30.27	30.55	56.38	40°10'29.877"N	104°46'14.759"W	6.20	
7185.00	48.135	1.937	7118.00	52.14	52.42	57.23	40°10'30.093"N	104°46'14.748"W	8.53	
7215.00	50.517	1.668	7137.55	74.88	75.16	57.94	40°10'30.318"N	104°46'14.739"W	7.97	
7245.00	53.921	1.259	7155.93	98.57	98.86	58.54	40°10'30.552"N	104°46'14.731"W	11.40	
7275.00	56.919	1.192	7172.95	123.26	123.56	59.07	40°10'30.796"N	104°46'14.724"W	10.00	
7305.00	58.103	0.819	7189.06	148.56	148.86	59.52	40°10'31.046"N	104°46'14.718"W	4.08	



Actual Wellpath Report

RATTLER 4N-34HZ AWP

Page 4 of 7



REFERENCE WELLPATH IDENTIFICATION

Operator	KERR-MCGEE OIL & GAS ONSHORE LP	Slot	SLOT#10 RATTLER 4N-34HZ (200'FSL & 493'FWL, SEC.34)
Area	COLORADO	Well	RATTLER 4N-34HZ
Field	WELD COUNTY (KERR MCGEE)	Wellbore	RATTLER 4N-34HZ AWB
Facility	SEC.34-T3N-R66W		

WELLPATH DATA (179 stations) † = interpolated/extrapolated station

MD [ft]	Inclination [°]	Azimuth [°]	TVD [ft]	Vert Sect [ft]	North [ft]	East [ft]	Latitude	Longitude	DLS [°/100ft]	Comments
7335.00	59.326	0.544	7204.64	174.19	174.49	59.82	40°10'31.299"N	104°46'14.714"W	4.15	
7365.00	62.550	0.058	7219.21	200.41	200.71	59.96	40°10'31.558"N	104°46'14.713"W	10.84	
7395.00	65.108	359.937	7232.44	227.33	227.63	59.96	40°10'31.824"N	104°46'14.713"W	8.53	
7425.00	67.909	0.269	7244.40	254.84	255.14	60.01	40°10'32.096"N	104°46'14.712"W	9.39	
7455.00	71.897	0.111	7254.71	283.01	283.31	60.10	40°10'32.375"N	104°46'14.711"W	13.30	
7485.00	74.324	0.324	7263.42	311.71	312.01	60.21	40°10'32.658"N	104°46'14.709"W	8.12	
7515.00	77.712	0.486	7270.67	340.82	341.12	60.41	40°10'32.946"N	104°46'14.707"W	11.31	
7545.00	79.309	0.410	7276.65	370.21	370.52	60.64	40°10'33.236"N	104°46'14.704"W	5.33	
7575.00	82.193	0.727	7281.47	399.82	400.12	60.94	40°10'33.529"N	104°46'14.700"W	9.67	
7605.00	83.776	359.951	7285.13	429.59	429.90	61.11	40°10'33.823"N	104°46'14.698"W	5.87	
7635.00	86.517	359.601	7287.67	459.48	459.79	61.00	40°10'34.119"N	104°46'14.699"W	9.21	
7665.00	88.562	359.455	7288.96	489.45	489.76	60.75	40°10'34.415"N	104°46'14.702"W	6.83	
7680.00†	89.275	359.413	7289.24	504.45	504.75	60.60	40°10'34.563"N	104°46'14.704"W	4.76	7" Casing Point
7695.00	89.988	359.371	7289.34	519.45	519.75	60.44	40°10'34.711"N	104°46'14.706"W	4.76	
7725.00	90.885	359.248	7289.11	549.44	549.75	60.08	40°10'35.008"N	104°46'14.711"W	3.02	
7755.00	89.655	359.101	7288.97	579.44	579.74	59.65	40°10'35.304"N	104°46'14.717"W	4.13	
7785.00	88.362	359.274	7289.49	609.44	609.73	59.22	40°10'35.600"N	104°46'14.722"W	4.35	
7815.00	88.302	359.171	7290.36	639.42	639.72	58.82	40°10'35.897"N	104°46'14.727"W	0.40	
7845.00	88.348	359.244	7291.24	669.41	669.70	58.40	40°10'36.193"N	104°46'14.733"W	0.29	
7875.00	88.361	359.268	7292.10	699.39	699.69	58.01	40°10'36.489"N	104°46'14.738"W	0.09	
7905.00	88.152	359.297	7293.01	729.38	729.67	57.64	40°10'36.786"N	104°46'14.742"W	0.70	
7935.00	88.145	359.367	7293.98	759.36	759.65	57.29	40°10'37.082"N	104°46'14.747"W	0.23	
7965.00	87.845	359.276	7295.03	789.34	789.63	56.93	40°10'37.378"N	104°46'14.752"W	1.04	
7995.00	88.374	359.300	7296.02	819.33	819.62	56.56	40°10'37.674"N	104°46'14.756"W	1.77	
8025.00	87.453	359.249	7297.11	849.31	849.59	56.18	40°10'37.971"N	104°46'14.761"W	3.07	
8055.00	88.658	359.452	7298.13	879.29	879.57	55.84	40°10'38.267"N	104°46'14.766"W	4.07	
8085.00	88.243	359.293	7298.94	909.28	909.56	55.51	40°10'38.563"N	104°46'14.770"W	1.48	
8115.00	89.210	359.512	7299.61	939.27	939.55	55.20	40°10'38.860"N	104°46'14.774"W	3.30	
8145.00	89.810	359.481	7299.86	969.27	969.55	54.93	40°10'39.156"N	104°46'14.777"W	2.00	
8175.00	89.874	359.571	7299.95	999.27	999.55	54.69	40°10'39.453"N	104°46'14.780"W	0.37	
8205.00	90.408	359.940	7299.87	1029.27	1029.55	54.56	40°10'39.749"N	104°46'14.782"W	2.16	
8235.00	89.982	359.600	7299.77	1059.27	1059.55	54.44	40°10'40.045"N	104°46'14.784"W	1.82	
8265.00	91.670	359.561	7299.34	1089.26	1089.54	54.22	40°10'40.342"N	104°46'14.786"W	5.63	
8295.00	90.444	358.802	7298.78	1119.25	1119.53	53.79	40°10'40.638"N	104°46'14.792"W	4.81	
8325.00	89.383	358.601	7298.83	1149.25	1149.52	53.11	40°10'40.935"N	104°46'14.801"W	3.60	
8355.00	89.956	358.498	7299.00	1179.24	1179.51	52.35	40°10'41.231"N	104°46'14.811"W	1.94	
8385.00	89.455	358.574	7299.16	1209.23	1209.50	51.58	40°10'41.527"N	104°46'14.820"W	1.69	
8415.00	89.451	358.690	7299.44	1239.23	1239.49	50.87	40°10'41.824"N	104°46'14.830"W	0.39	
8445.00	89.885	358.127	7299.62	1269.22	1269.48	50.04	40°10'42.120"N	104°46'14.840"W	2.37	
8475.00	90.858	357.796	7299.42	1299.20	1299.46	48.97	40°10'42.416"N	104°46'14.854"W	3.43	
8505.00	90.984	357.855	7298.94	1329.18	1329.44	47.83	40°10'42.713"N	104°46'14.869"W	0.46	
8535.00	91.018	357.861	7298.42	1359.16	1359.41	46.71	40°10'43.009"N	104°46'14.883"W	0.12	
8565.00	91.118	357.902	7297.86	1389.14	1389.38	45.60	40°10'43.305"N	104°46'14.898"W	0.36	
8595.00	90.961	357.803	7297.31	1419.12	1419.36	44.48	40°10'43.601"N	104°46'14.912"W	0.62	
8625.00	88.857	357.610	7297.36	1449.10	1449.33	43.28	40°10'43.897"N	104°46'14.927"W	7.04	



Actual Wellpath Report

RATTLER 4N-34HZ AWP

Page 5 of 7



REFERENCE WELLPATH IDENTIFICATION

Operator	KERR-MCGEE OIL & GAS ONSHORE LP	Slot	SLOT#10 RATTLER 4N-34HZ (200'FSL & 493'FWL, SEC.34)
Area	COLORADO	Well	RATTLER 4N-34HZ
Field	WELD COUNTY (KERR MCGEE)	Wellbore	RATTLER 4N-34HZ AWB
Facility	SEC.34-T3N-R66W		

WELLPATH DATA (179 stations)

MD [ft]	Inclination [°]	Azimuth [°]	TVD [ft]	Vert Sect [ft]	North [ft]	East [ft]	Latitude	Longitude	DLS [°/100ft]	Comments
8655.00	89.424	357.637	7297.81	1479.08	1479.30	42.03	40°10'44.194"N	104°46'14.943"W	1.89	
8685.00	89.197	357.580	7298.17	1509.06	1509.28	40.78	40°10'44.490"N	104°46'14.960"W	0.78	
8715.00	89.293	357.572	7298.57	1539.03	1539.25	39.51	40°10'44.786"N	104°46'14.976"W	0.32	
8745.00	88.733	357.582	7299.08	1569.01	1569.21	38.24	40°10'45.082"N	104°46'14.992"W	1.87	
8775.00	89.796	357.618	7299.47	1598.98	1599.19	36.99	40°10'45.378"N	104°46'15.008"W	3.55	
8805.00	90.466	358.334	7299.40	1628.97	1629.17	35.93	40°10'45.674"N	104°46'15.022"W	3.27	
8835.00	90.762	358.591	7299.08	1658.96	1659.15	35.12	40°10'45.971"N	104°46'15.033"W	1.31	
8865.00	91.650	358.506	7298.45	1688.93	1689.14	34.36	40°10'46.267"N	104°46'15.042"W	2.97	
8895.00	91.131	358.387	7297.72	1718.93	1719.12	33.55	40°10'46.563"N	104°46'15.053"W	1.77	Tie-Into GYRO Surveys
8960.00	90.650	358.490	7296.71	1783.91	1784.08	31.78	40°10'47.205"N	104°46'15.076"W	0.76	Begin BHI MWD Surveys
9045.00	90.060	358.350	7296.18	1868.88	1869.05	29.44	40°10'48.045"N	104°46'15.106"W	0.71	
9130.00	90.860	358.170	7295.50	1953.85	1954.01	26.85	40°10'48.885"N	104°46'15.139"W	0.96	
9215.00	91.570	357.540	7293.70	2038.79	2038.93	23.67	40°10'49.724"N	104°46'15.180"W	1.12	
9300.00	89.720	355.960	7292.74	2123.66	2123.78	18.86	40°10'50.562"N	104°46'15.242"W	2.86	
9384.00	89.880	356.030	7293.03	2207.48	2207.57	12.99	40°10'51.390"N	104°46'15.318"W	0.21	
9469.00	89.140	356.910	7293.76	2292.34	2292.41	7.76	40°10'52.229"N	104°46'15.385"W	1.35	
9554.00	88.430	358.260	7295.56	2377.26	2377.31	4.17	40°10'53.068"N	104°46'15.431"W	1.79	
9640.00	88.090	359.270	7298.17	2463.21	2463.25	2.32	40°10'53.917"N	104°46'15.455"W	1.24	
9725.00	89.230	359.740	7300.16	2548.18	2548.22	1.59	40°10'54.757"N	104°46'15.465"W	1.45	
9810.00	90.800	0.510	7300.14	2633.18	2633.22	1.77	40°10'55.597"N	104°46'15.462"W	2.06	
9896.00	91.140	0.240	7298.68	2719.16	2719.20	2.34	40°10'56.446"N	104°46'15.455"W	0.50	
9981.00	89.870	359.630	7297.93	2804.15	2804.20	2.24	40°10'57.286"N	104°46'15.456"W	1.66	
10065.00	90.220	359.590	7297.87	2888.15	2888.20	1.67	40°10'58.116"N	104°46'15.464"W	0.42	
10149.00	90.490	359.210	7297.35	2972.15	2972.19	0.79	40°10'58.946"N	104°46'15.475"W	0.55	
10235.00	90.180	358.780	7296.85	3058.14	3058.18	-0.72	40°10'59.796"N	104°46'15.494"W	0.62	
10320.00	90.090	359.040	7296.65	3143.13	3143.16	-2.34	40°11'00.636"N	104°46'15.515"W	0.32	
10405.00	89.320	359.100	7297.08	3228.13	3228.15	-3.72	40°11'01.476"N	104°46'15.533"W	0.91	
10490.00	88.490	358.700	7298.71	3313.10	3313.11	-5.35	40°11'02.315"N	104°46'15.554"W	1.08	
10576.00	89.170	359.660	7300.46	3399.08	3399.09	-6.58	40°11'03.165"N	104°46'15.570"W	1.37	
10661.00	89.910	0.320	7301.15	3484.07	3484.08	-6.59	40°11'04.005"N	104°46'15.570"W	1.17	
10746.00	89.380	0.520	7301.67	3569.06	3569.08	-5.97	40°11'04.845"N	104°46'15.562"W	0.67	
10831.00	90.620	359.750	7301.67	3654.06	3654.08	-5.77	40°11'05.685"N	104°46'15.559"W	1.72	
10916.00	89.910	359.340	7301.28	3739.06	3739.07	-6.45	40°11'06.525"N	104°46'15.568"W	0.96	
11002.00	91.140	358.980	7300.49	3825.05	3825.06	-7.71	40°11'07.374"N	104°46'15.584"W	1.49	
11087.00	90.890	358.860	7298.99	3910.03	3910.03	-9.31	40°11'08.214"N	104°46'15.605"W	0.33	
11172.00	90.280	358.180	7298.12	3995.00	3994.99	-11.50	40°11'09.054"N	104°46'15.633"W	1.07	
11258.00	89.910	357.270	7297.97	4080.95	4080.93	-14.92	40°11'09.903"N	104°46'15.677"W	1.14	
11343.00	90.060	359.850	7298.00	4165.92	4165.89	-17.05	40°11'10.742"N	104°46'15.705"W	3.04	
11428.00	90.060	359.000	7297.91	4250.92	4250.89	-17.91	40°11'11.582"N	104°46'15.716"W	1.00	
11513.00	89.260	358.520	7298.41	4335.91	4335.86	-19.75	40°11'12.422"N	104°46'15.739"W	1.10	
11598.00	89.500	359.080	7299.33	4420.89	4420.84	-21.53	40°11'13.262"N	104°46'15.762"W	0.72	
11683.00	89.210	359.980	7300.29	4505.89	4505.83	-22.22	40°11'14.102"N	104°46'15.771"W	1.11	
11704.00	89.320	359.710	7300.56	4526.88	4526.83	-22.28	40°11'14.309"N	104°46'15.772"W	1.39	Last BHI MWD Survey
11764.00	89.320	359.710	7301.27	4586.88	4586.82	-22.58	40°11'14.902"N	104°46'15.776"W	0.00	Projection to Bit



Actual Wellpath Report

RATTLER 4N-34HZ AWP

Page 6 of 7



REFERENCE WELLPATH IDENTIFICATION

Operator	KERR-MCGEE OIL & GAS ONSHORE LP	Slot	SLOT#10 RATTLER 4N-34HZ (200'FSL & 493'FWL, SEC.34)
Area	COLORADO	Well	RATTLER 4N-34HZ
Field	WELD COUNTY (KERR MCGEE)	Wellbore	RATTLER 4N-34HZ AWB
Facility	SEC.34-T3N-R66W		

HOLE & CASING SECTIONS - Ref Wellbore: RATTLER 4N-34HZ AWB Ref Wellpath: RATTLER 4N-34HZ AWP

String/Diameter	Start MD [ft]	End MD [ft]	Interval [ft]	Start TVD [ft]	End TVD [ft]	Start N/S [ft]	Start E/W [ft]	End N/S [ft]	End E/W [ft]
12.25in Open Hole	17.00	927.00	910.00	17.00	926.98	0.00	0.00	2.52	-4.38
9.625in Casing Surface	17.00	927.00	910.00	17.00	926.98	0.00	0.00	2.52	-4.38
8.75in Open Hole	927.00	7657.00	6730.00	926.98	7288.72	2.52	-4.38	481.76	60.82
7in Casing Intermediate	17.00	7680.00	7663.00	17.00	7289.24	0.00	0.00	504.75	60.60
6.125in Open Hole	7680.00	11764.00	4084.00	7289.24	7301.27	504.75	60.60	4586.82	-22.58

TARGETS

Name	MD [ft]	TVD [ft]	North [ft]	East [ft]	Grid East [US ft]	Grid North [US ft]	Latitude	Longitude	Shape
RATTLER SECTION 34 LINES		0.00	-0.30	-29.89	3203684.99	1307389.26	40°10'29.572"N	104°46'15.870"W	polygon
RATTLER 4N-34HZ BHL ON PLAT (460'FNL & 510'FWL, SEC.34) REV-1		7199.00	4611.71	-5.59	3203671.37	1312001.11	40°11'15.148"N	104°46'15.557"W	point
RATTLER SEC.34 HARDLINES (460' SETBACKS)		7200.00	-0.30	-29.89	3203684.99	1307389.26	40°10'29.572"N	104°46'15.870"W	polygon
RATTLER 4N-34HZ BHL (460'FNL & 475'FWL, SEC.34) REV-3		7214.00	4611.71	-40.59	3203636.37	1312000.82	40°11'15.148"N	104°46'16.008"W	point
RATTLER 4N-34HZ BHL (460'FNL & 495'FWL, SEC.34) REV-4		7214.00	4611.71	-20.59	3203656.37	1312000.99	40°11'15.148"N	104°46'15.750"W	point
RATTLER 4N-34HZ BHL (460'FNL & 510'FWL, SEC.34) REV-2		7214.00	4611.71	-5.59	3203671.37	1312001.11	40°11'15.148"N	104°46'15.557"W	point
RATTLER 4N-34HZ BHL (460'FNL & 495'FWL, SEC.34) REV-5		7289.00	4611.71	-20.59	3203656.37	1312000.99	40°11'15.148"N	104°46'15.750"W	point

WELLPATH COMPOSITION - Ref Wellbore: RATTLER 4N-34HZ AWB Ref Wellpath: RATTLER 4N-34HZ AWP

Start MD [ft]	End MD [ft]	Positional Uncertainty Model	Log Name/Comment	Wellbore
17.00	8895.00	Gyrodata standard - Continuous gyro	GYRODATA SURVEYS <100-8895>	RATTLER 4N-34HZ AWB
8895.00	11704.00	NaviTrak (Standard)	BHI MWD SURVEYS 6 1/8" HOLE <8960-11704>	RATTLER 4N-34HZ AWB
11704.00	11764.00	Blind Drilling (std)	Projection to bit	RATTLER 4N-34HZ AWB



Actual Wellpath Report

RATTLER 4N-34HZ AWP

Page 7 of 7



REFERENCE WELLPATH IDENTIFICATION

Operator	KERR-MCGEE OIL & GAS ONSHORE LP	Slot	SLOT#10 RATTLER 4N-34HZ (200'FSL & 493'FWL, SEC.34)
Area	COLORADO	Well	RATTLER 4N-34HZ
Field	WELD COUNTY (KERR MCGEE)	Wellbore	RATTLER 4N-34HZ AWB
Facility	SEC.34-T3N-R66W		

WELLPATH COMMENTS

MD [ft]	Inclination [°]	Azimuth [°]	TVD [ft]	Comment
17.00	0.000	325.344	17.00	Tie-On
100.00	0.880	325.344	100.00	Begin GYRO Surveys
7680.00	89.275	359.413	7289.24	7" Casing Point
8895.00	91.131	358.387	7297.72	Tie-Into GYRO Surveys
8960.00	90.650	358.490	7296.71	Begin BHI MWD Surveys
11704.00	89.320	359.710	7300.56	Last BHI MWD Survey
11764.00	89.320	359.710	7301.27	Projection to Bit