

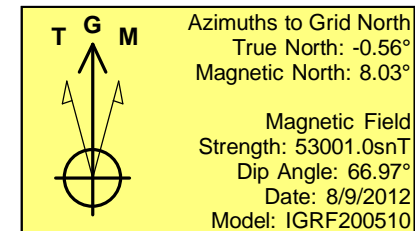
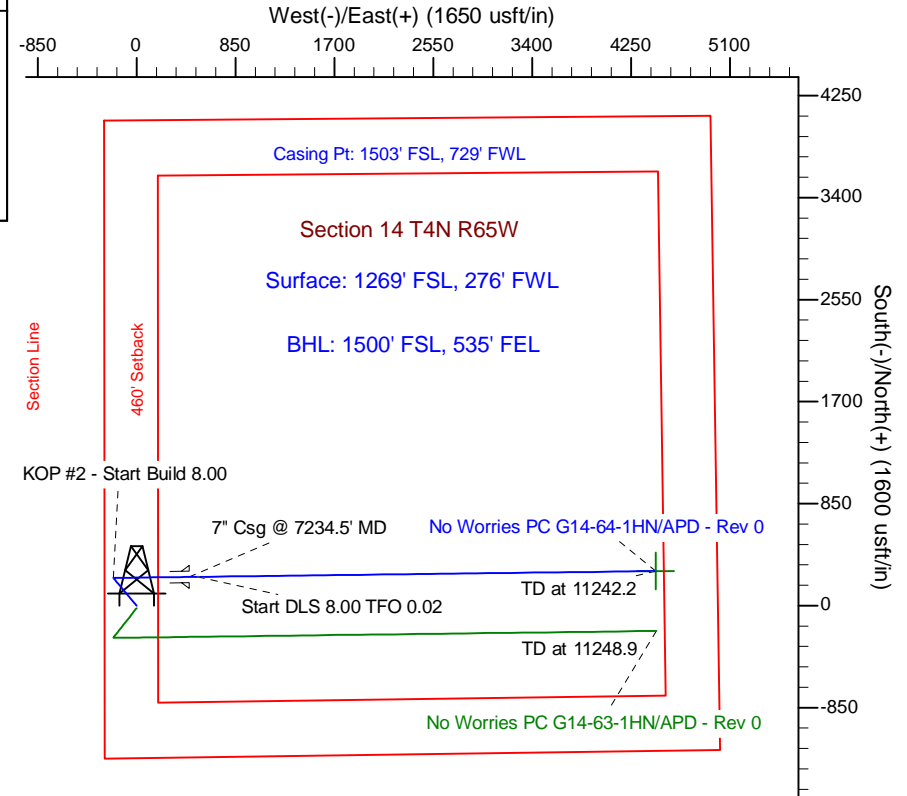
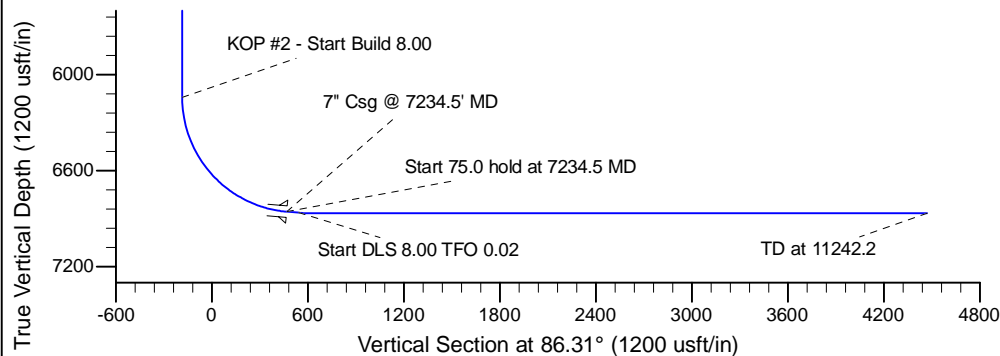
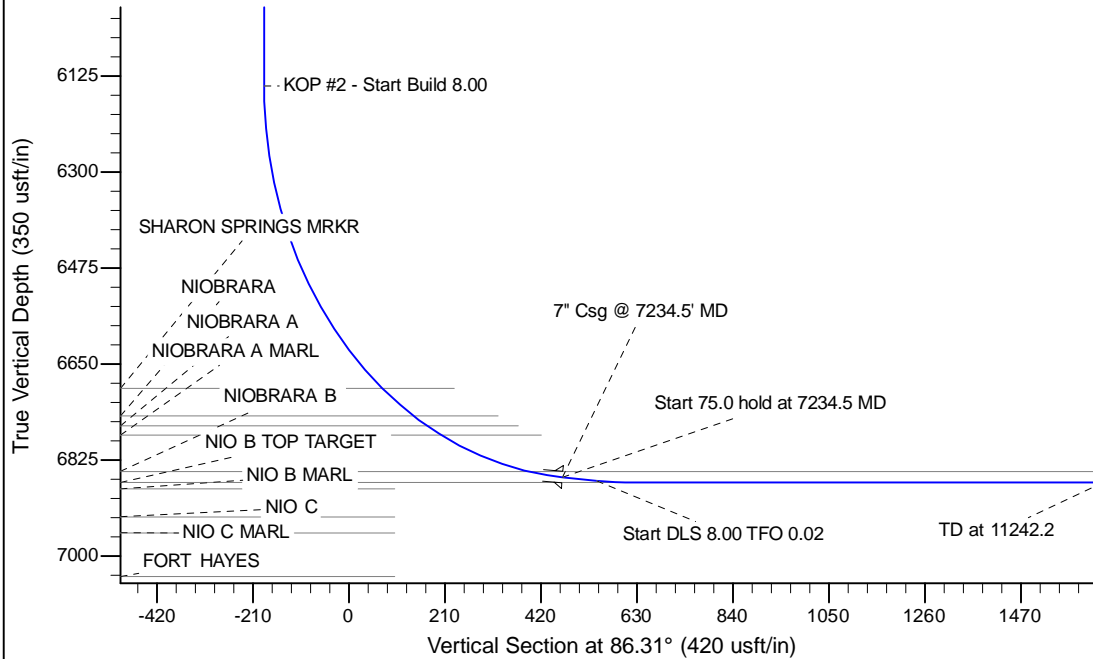
Project: Wattenberg Field
Site: G (Sec.14-T04N-R65W) Weld County, CO
Well: No Worries PC G14-64-1HN
Wellbore: Original Drilling
Design: APD - Rev 0

Northern Region Drilling

Geodetic System: US State Plane 1983
Datum: North American Datum 1983
Ellipsoid: GRS 1980
Zone: Colorado Northern Zone
System Datum: Mean Sea Level

SECTION DETAILS

| Sec | MD | Inc | Azi | TVD | +N/-S | +E/-W | Dleg | TFace | Vsect | Target |
|-----|---------|-------|--------|--------|-------|--------|------|--------|--------|--|
| 1 | 0.0 | 0.00 | 0.00 | 0.0 | 0.0 | 0.0 | 0.00 | 0.00 | 0.0 | |
| 2 | 2000.0 | 0.00 | 0.00 | 2000.0 | 0.0 | 0.0 | 0.00 | 0.00 | 0.0 | |
| 3 | 2481.1 | 12.03 | 318.97 | 2477.6 | 38.0 | -33.0 | 2.50 | 318.97 | -30.5 | |
| 4 | 3467.6 | 12.03 | 318.97 | 3442.4 | 193.0 | -168.0 | 0.00 | 0.00 | -155.2 | |
| 5 | 3948.7 | 0.00 | 0.00 | 3920.0 | 231.0 | -201.0 | 2.50 | 180.00 | -185.7 | |
| 6 | 6172.0 | 0.00 | 0.00 | 6143.3 | 231.0 | -201.0 | 0.00 | 0.00 | -185.7 | |
| 7 | 7234.5 | 85.00 | 89.30 | 6856.8 | 239.0 | 452.7 | 8.00 | 89.30 | 467.2 | |
| 8 | 7309.5 | 85.00 | 89.30 | 6863.3 | 239.9 | 527.4 | 0.00 | 0.00 | 541.8 | |
| 9 | 7372.0 | 90.00 | 89.30 | 6866.0 | 240.7 | 589.9 | 8.00 | 0.02 | 604.1 | |
| 10 | 11242.2 | 90.00 | 89.30 | 6866.0 | 287.8 | 4459.7 | 0.00 | 0.00 | 4469.0 | No Worries PC G14-64-1HN BHL 1500'FSL, 535'FEL |



| WELL DETAILS: No Worries PC G14-64-1HN | | | |
|--|----------------|----------|-----------------------|
| Ground Level: | 4695.0 | Latitude | 40.308660 |
| Northing | 1356452.31 | Easting | 3240194.81 |
| Longitude | -104.638720 | | |
| Plan: APD - Rev 0 (No Worries PC G14-64-1HN/Original Drilling) | | | |
| Created By: | Carrie Willers | Date: | 13:44, August 10 2012 |
| Checked: | | Date: | |
| Reviewed: | | Date: | |
| Approved: | | Date: | |