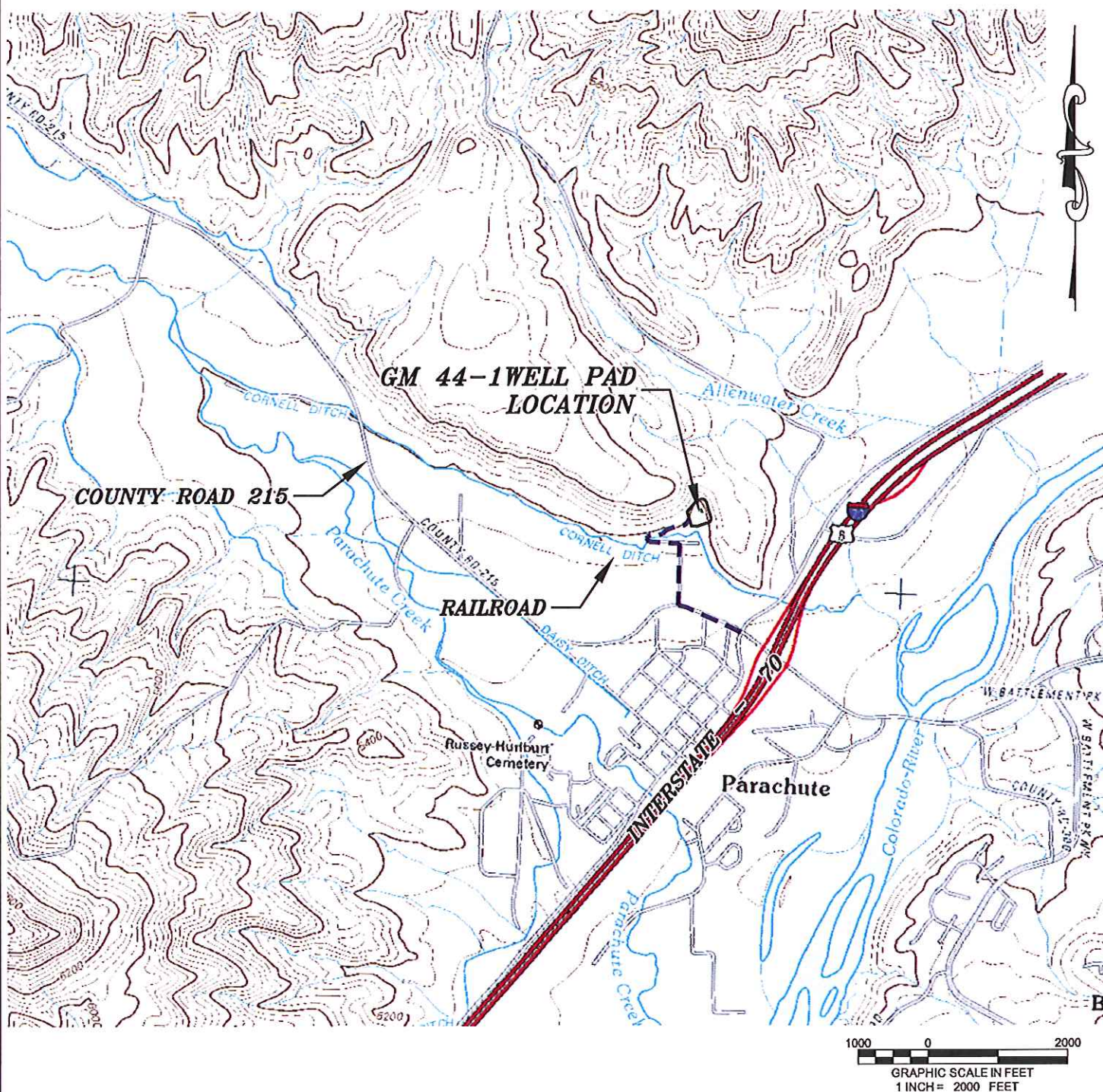


Section 1  
T. 7 S., R 96 W



**ACCESS DESCRIPTION:**

FROM THE INTERSECTION OF 1ST STREET AND COUNTY ROAD 215 AT PARACHUTE, PROCEED IN A NORTHWESTERLY DIRECTION ON COUNTY ROAD 215  $\pm 0.2$  MILES TO THE INTERSECTION WITH MURRAY LANE, PROCEED RIGHT IN A NORTHERLY DIRECTION TO MURRAY COURT, PROCEED LEFT IN A WESTERLY DIRECTION THEN BACK THROUGH A PARKING LOT  $\pm 0.2$  MILE AROUND TO THE EXISTING GM 44-1 DRILL PAD LOCATION, AS SHOWN HEREON.

136 East Third Street  
Rifle, Colorado 81650  
Ph. (970) 625-2720  
Fax (970) 625-2773



**BOOKCLIFF**  
Survey Services, Inc.

SCALE: 1" = 2000'  
DATE: 4/10/12  
PLAT: 5 of 7  
PROJECT: Valley  
DFT: cws

Construction Plan Prepared for:  
**WPXENERGY**

WPX Energy Rocky Mountain, LLC

GM 44-1 Drill Pad - Plat 5  
ACCESS ROAD & TOPO MAP