

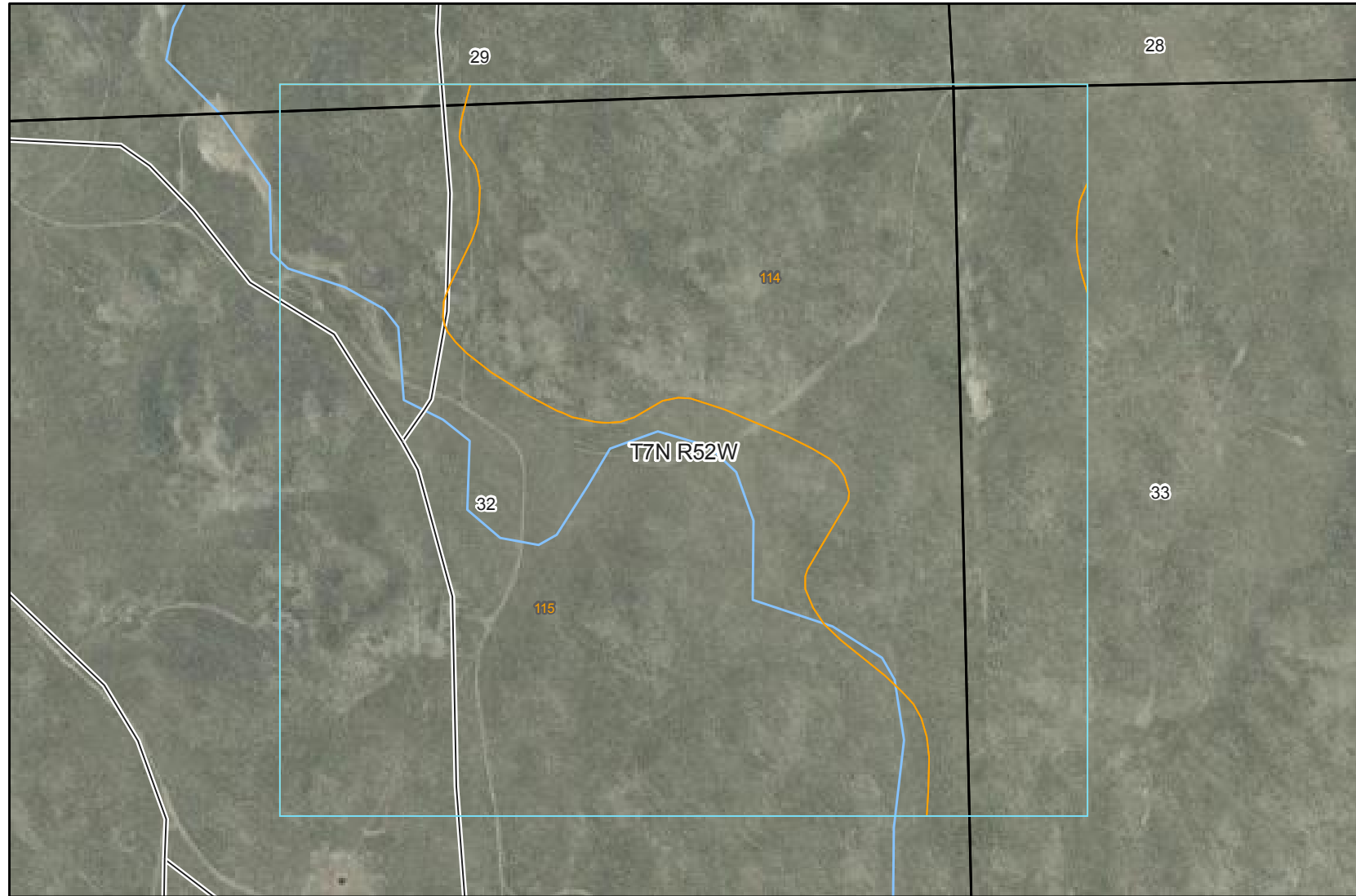
Soil Map—Logan County, Colorado  
(Dune Ridge Section 17 NE4 Soils Map)

103° 12' 47"

103° 11' 36"

40° 32' 20"

40° 32' 19"



40° 31' 44"

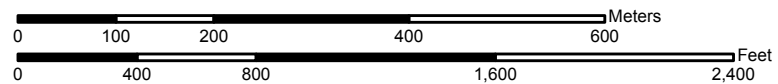
40° 31' 43"

103° 12' 48"

103° 11' 37"



Map Scale: 1:8,010 if printed on A size (8.5" x 11") sheet.



Soil Map—Logan County, Colorado  
(Dune Ridge Section 17 NE4 Soils Map)

## MAP LEGEND

### Area of Interest (AOI)

 Area of Interest (AOI)

### Soils

 Soil Map Units

### Special Point Features

-  Blowout
-  Borrow Pit
-  Clay Spot
-  Closed Depression
-  Gravel Pit
-  Gravelly Spot
-  Landfill
-  Lava Flow
-  Marsh or swamp
-  Mine or Quarry
-  Miscellaneous Water
-  Perennial Water
-  Rock Outcrop
-  Saline Spot
-  Sandy Spot
-  Severely Eroded Spot
-  Sinkhole
-  Slide or Slip
-  Sodic Spot
-  Spoil Area
-  Stony Spot



Very Stony Spot



Wet Spot



Other

### Special Line Features



Gully



Short Steep Slope



Other

### Political Features



Cities



PLSS Township and Range



PLSS Section

### Water Features



Streams and Canals

### Transportation



Rails



Interstate Highways



US Routes



Major Roads



Local Roads

## MAP INFORMATION

Map Scale: 1:8,010 if printed on A size (8.5" × 11") sheet.

The soil surveys that comprise your AOI were mapped at 1:24,000.

Warning: Soil Map may not be valid at this scale.

Enlargement of maps beyond the scale of mapping can cause misunderstanding of the detail of mapping and accuracy of soil line placement. The maps do not show the small areas of contrasting soils that could have been shown at a more detailed scale.

Please rely on the bar scale on each map sheet for accurate map measurements.

Source of Map: Natural Resources Conservation Service

Web Soil Survey URL: <http://websoilsurvey.nrcs.usda.gov>

Coordinate System: UTM Zone 13N NAD83

This product is generated from the USDA-NRCS certified data as of the version date(s) listed below.

Soil Survey Area: Logan County, Colorado

Survey Area Data: Version 7, Apr 29, 2009

Date(s) aerial images were photographed: 7/9/2005

The orthophoto or other base map on which the soil lines were compiled and digitized probably differs from the background imagery displayed on these maps. As a result, some minor shifting of map unit boundaries may be evident.



## Map Unit Legend

Logan County, Colorado (CO075)			
Map Unit Symbol	Map Unit Name	Acres in AOI	Percent of AOI
114	Valent sand, 15 to 40 percent slopes	113.9	49.7%
115	Valent loamy sand, 3 to 15 percent slopes	115.3	50.3%
Totals for Area of Interest		229.2	100.0%