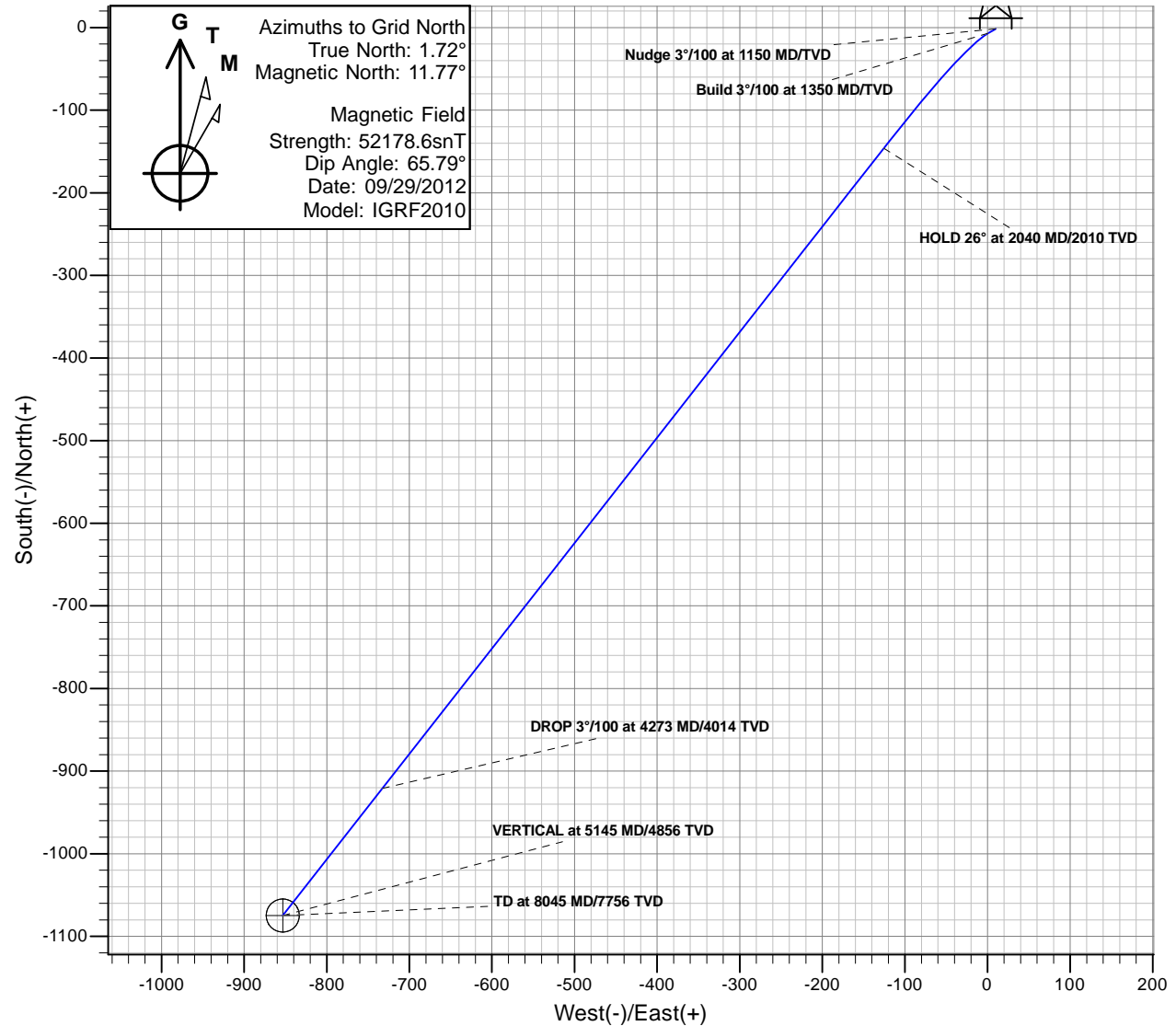
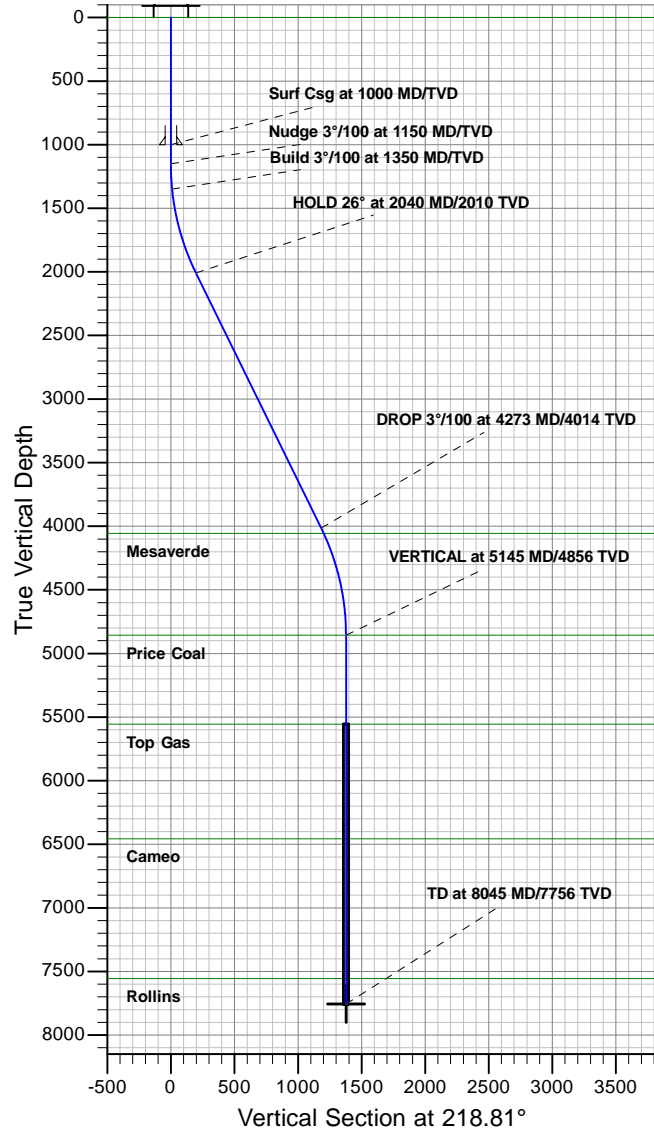




Antero Resources

Dever C10 (112043)
Dever C10 P01



REFERENCE INFORMATION

Co-ordinate (N/E) Reference: Site Dever C, Grid North
Vertical (TVD) Reference: KB @ 5609.00ft (Original Well Elev)
Section (VS) Reference: Slot - C10(-1.60N, 9.85E)
Measured Depth Reference: KB @ 5609.00ft (Original Well Elev)
Calculation Method: Minimum Curvature

PROJECT DETAILS: Dever

Geodetic System: Universal Transverse Mercator
Datum: North American Datum 1983
Ellipsoid: GRS 1980
Zone: Zone 13N (108 W to 102 W)
System Datum: Mean Sea Level

SECTION DETAILS

MD	Inc	Azi	TVD	+N/-S	+E/-W	Dleg	TFace	V Sect	Target
0.00	0.00	0.00	0.00	-1.60	9.85	0.00	0.00	0.00	
1150.00	0.00	0.00	1150.00	-1.60	9.85	0.00	0.00	0.00	
1350.00	6.00	240.00	1349.63	-6.83	0.79	3.00	240.00	9.75	
2039.99	26.15	218.08	2009.61	-146.08	-125.61	3.00	-27.74	197.48	
4273.21	26.15	218.08	4014.19	-920.90	-732.70	0.00	0.00	1181.73	
5144.98	0.00	218.08	4856.00	-1074.81	-853.29	3.00	180.00	1377.24	
8044.98	0.00	218.08	7756.00	-1074.81	-853.29	0.00	218.08	1377.24	BH C10



Antero Resources

Dever

Dever C

Dever C10 (112043) - Slot C10

Dever C10

Plan: Dever C10 P01

Standard Planning Report - Geographic

11 July, 2012



Database:	EDM5000	Local Co-ordinate Reference:	Site Dever C
Company:	Antero Resources	TVD Reference:	KB @ 5609.00ft (Original Well Elev)
Project:	Dever	MD Reference:	KB @ 5609.00ft (Original Well Elev)
Site:	Dever C	North Reference:	Grid
Well:	Dever C10 (112043)	Survey Calculation Method:	Minimum Curvature
Wellbore:	Dever C10		
Design:	Dever C10 P01		

Project	Dever		
Map System:	Universal Transverse Mercator	System Datum:	Mean Sea Level
Geo Datum:	North American Datum 1983		
Map Zone:	Zone 13N (108 W to 102 W)		

Site	Dever C					
Site Position:		Northing:	14,366,374.09 usft	Latitude:	39.528240000°N	
From:	Map	Easting:	879,108.20 usft	Longitude:	107.699784000°W	
Position Uncertainty:		0.00 ft	Slot Radius:	13.200 in	Grid Convergence:	-1.72 °

Well	Dever C10 (112043) - Slot C10					
Well Position	+N/-S	-1.60 ft	Northing:	14,366,372.49 usft	Latitude:	39.528236421°N
	+E/-W	9.85 ft	Easting:	879,118.05 usft	Longitude:	107.699748936°W
Position Uncertainty		0.00 ft	Wellhead Elevation:		Ground Level:	5,585.00 ft

Wellbore	Dever C10				
Magnetics	Model Name	Sample Date	Declination (°)	Dip Angle (°)	Field Strength (nT)
	IGRF2010	09/29/12	10.06	65.79	52,179

Design	Dever C10 P01				
Audit Notes:					
Version:	Phase:	PROTOTYPE	Tie On Depth:	0.00	
Vertical Section:	Depth From (TVD) (ft)	+N/-S (ft)	+E/-W (ft)	Direction (°)	
	0.00	-1.60	9.85	218.81	

Plan Sections										
Measured Depth (ft)	Inclination (°)	Azimuth (°)	Vertical Depth (ft)	+N/-S (ft)	+E/-W (ft)	Dogleg Rate (°/100ft)	Build Rate (°/100ft)	Turn Rate (°/100ft)	TFO (°)	Target
0.00	0.00	0.00	0.00	-1.60	9.85	0.00	0.00	0.00	0.00	
1,150.00	0.00	0.00	1,150.00	-1.60	9.85	0.00	0.00	0.00	0.00	
1,350.00	6.00	240.00	1,349.63	-6.83	0.79	3.00	3.00	0.00	240.00	
2,039.99	26.15	218.08	2,009.61	-146.08	-125.61	3.00	2.92	-3.18	-27.74	
4,273.21	26.15	218.08	4,014.19	-920.90	-732.70	0.00	0.00	0.00	0.00	
5,144.98	0.00	218.08	4,856.00	-1,074.81	-853.29	3.00	-3.00	0.00	180.00	
8,044.98	0.00	218.08	7,756.00	-1,074.81	-853.29	0.00	0.00	0.00	218.08 BH C10	

Database:	EDM5000	Local Co-ordinate Reference:	Site Dever C
Company:	Antero Resources	TVD Reference:	KB @ 5609.00ft (Original Well Elev)
Project:	Dever	MD Reference:	KB @ 5609.00ft (Original Well Elev)
Site:	Dever C	North Reference:	Grid
Well:	Dever C10 (112043)	Survey Calculation Method:	Minimum Curvature
Wellbore:	Dever C10		
Design:	Dever C10 P01		

Planned Survey										
Measured Depth (ft)	Inclination (°)	Azimuth (°)	Vertical Depth (ft)	+N/-S (ft)	+E/-W (ft)	Map Northing (usft)	Map Easting (usft)	Latitude	Longitude	
0.00	0.00	0.00	0.00	-1.60	9.85	14,366,372.49	879,118.05	39.528236421°N	107.699748936°W	
Wasatch										
100.00	0.00	0.00	100.00	-1.60	9.85	14,366,372.49	879,118.05	39.528236421°N	107.699748936°W	
200.00	0.00	0.00	200.00	-1.60	9.85	14,366,372.49	879,118.05	39.528236421°N	107.699748936°W	
300.00	0.00	0.00	300.00	-1.60	9.85	14,366,372.49	879,118.05	39.528236421°N	107.699748936°W	
400.00	0.00	0.00	400.00	-1.60	9.85	14,366,372.49	879,118.05	39.528236421°N	107.699748936°W	
500.00	0.00	0.00	500.00	-1.60	9.85	14,366,372.49	879,118.05	39.528236421°N	107.699748936°W	
600.00	0.00	0.00	600.00	-1.60	9.85	14,366,372.49	879,118.05	39.528236421°N	107.699748936°W	
700.00	0.00	0.00	700.00	-1.60	9.85	14,366,372.49	879,118.05	39.528236421°N	107.699748936°W	
800.00	0.00	0.00	800.00	-1.60	9.85	14,366,372.49	879,118.05	39.528236421°N	107.699748936°W	
900.00	0.00	0.00	900.00	-1.60	9.85	14,366,372.49	879,118.05	39.528236421°N	107.699748936°W	
1,000.00	0.00	0.00	1,000.00	-1.60	9.85	14,366,372.49	879,118.05	39.528236421°N	107.699748936°W	
Surf Csg at 1000 MD/TVD										
1,100.00	0.00	0.00	1,100.00	-1.60	9.85	14,366,372.49	879,118.05	39.528236421°N	107.699748936°W	
1,150.00	0.00	0.00	1,150.00	-1.60	9.85	14,366,372.49	879,118.05	39.528236421°N	107.699748936°W	
Nudge 3°/100 at 1150 MD/TVD										
1,200.00	1.50	240.00	1,199.99	-1.93	9.28	14,366,372.16	879,117.49	39.528235477°N	107.699750909°W	
1,300.00	4.50	240.00	1,299.85	-4.54	4.75	14,366,369.54	879,112.95	39.528227926°N	107.699766685°W	
1,350.00	6.00	240.00	1,349.63	-6.83	0.79	14,366,367.25	879,108.99	39.528221324°N	107.699780478°W	
Build 3°/100 at 1350 MD/TVD										
1,400.00	7.36	234.54	1,399.29	-10.00	-4.08	14,366,364.09	879,104.12	39.528212241°N	107.699797402°W	
1,500.00	10.20	228.10	1,498.11	-19.63	-15.89	14,366,354.46	879,092.31	39.528184846°N	107.699838215°W	
1,600.00	13.11	224.46	1,596.04	-33.64	-30.43	14,366,340.45	879,077.77	39.528145214°N	107.699888219°W	
1,700.00	16.05	222.13	1,692.81	-51.99	-47.65	14,366,322.10	879,060.55	39.528093452°N	107.699947279°W	
1,800.00	19.01	220.51	1,788.16	-74.63	-67.51	14,366,299.45	879,040.69	39.528029702°N	107.700015231°W	
1,900.00	21.98	219.32	1,881.82	-101.50	-89.96	14,366,272.58	879,018.24	39.527954140°N	107.700091890°W	
2,000.00	24.96	218.39	1,973.53	-132.53	-114.93	14,366,241.56	878,993.27	39.527866972°N	107.700177045°W	
2,039.99	26.15	218.08	2,009.61	-146.08	-125.61	14,366,228.01	878,982.60	39.527828913°N	107.700213429°W	
HOLD 26° at 2040 MD/2010 TVD										
2,100.00	26.15	218.08	2,063.47	-166.90	-141.92	14,366,207.19	878,966.29	39.527770455°N	107.700269002°W	
2,200.00	26.15	218.08	2,153.24	-201.59	-169.10	14,366,172.49	878,939.10	39.527673034°N	107.700361615°W	
2,300.00	26.15	218.08	2,243.00	-236.29	-196.29	14,366,137.80	878,911.92	39.527575614°N	107.700454227°W	
2,400.00	26.15	218.08	2,332.76	-270.98	-223.47	14,366,103.10	878,884.73	39.527478193°N	107.700546839°W	
2,500.00	26.15	218.08	2,422.52	-305.68	-250.66	14,366,068.41	878,857.55	39.527380773°N	107.700639451°W	
2,600.00	26.15	218.08	2,512.29	-340.37	-277.84	14,366,033.71	878,830.36	39.527283352°N	107.700732063°W	
2,700.00	26.15	218.08	2,602.05	-375.07	-305.03	14,365,999.02	878,803.18	39.527185931°N	107.700824674°W	
2,800.00	26.15	218.08	2,691.81	-409.77	-332.21	14,365,964.32	878,775.99	39.527088511°N	107.700917285°W	
2,900.00	26.15	218.08	2,781.57	-444.46	-359.40	14,365,929.63	878,748.81	39.526991090°N	107.701009896°W	
3,000.00	26.15	218.08	2,871.33	-479.16	-386.58	14,365,894.93	878,721.62	39.526893669°N	107.701102506°W	
3,100.00	26.15	218.08	2,961.10	-513.85	-413.76	14,365,860.23	878,694.44	39.526796248°N	107.701195117°W	
3,200.00	26.15	218.08	3,050.86	-548.55	-440.95	14,365,825.54	878,667.25	39.526698827°N	107.701287727°W	
3,300.00	26.15	218.08	3,140.62	-583.24	-468.13	14,365,790.84	878,640.07	39.526601405°N	107.701380337°W	
3,400.00	26.15	218.08	3,230.38	-617.94	-495.32	14,365,756.15	878,612.89	39.526503984°N	107.701472946°W	
3,500.00	26.15	218.08	3,320.14	-652.63	-522.50	14,365,721.45	878,585.70	39.526406563°N	107.701565555°W	
3,600.00	26.15	218.08	3,409.91	-687.33	-549.69	14,365,686.76	878,558.52	39.526309142°N	107.701658164°W	
3,700.00	26.15	218.08	3,499.67	-722.02	-576.87	14,365,652.06	878,531.33	39.526211720°N	107.701750773°W	
3,800.00	26.15	218.08	3,589.43	-756.72	-604.06	14,365,617.37	878,504.15	39.526114299°N	107.701843382°W	
3,900.00	26.15	218.08	3,679.19	-791.41	-631.24	14,365,582.67	878,476.96	39.526016877°N	107.701935990°W	
4,000.00	26.15	218.08	3,768.95	-826.11	-658.43	14,365,547.98	878,449.78	39.525919456°N	107.702028598°W	
4,100.00	26.15	218.08	3,858.72	-860.81	-685.61	14,365,513.28	878,422.59	39.525822034°N	107.702121206°W	
4,200.00	26.15	218.08	3,948.48	-895.50	-712.80	14,365,478.59	878,395.41	39.525724612°N	107.702213813°W	
4,273.21	26.15	218.08	4,014.19	-920.90	-732.70	14,365,453.19	878,375.51	39.525653290°N	107.702281611°W	
DROP 3°/100 at 4273 MD/4014 TVD										
4,300.00	25.35	218.08	4,038.32	-930.06	-739.88	14,365,444.02	878,368.33	39.525627564°N	107.702306065°W	

Database:	EDM5000	Local Co-ordinate Reference:	Site Dever C
Company:	Antero Resources	TVD Reference:	KB @ 5609.00ft (Original Well Elev)
Project:	Dever	MD Reference:	KB @ 5609.00ft (Original Well Elev)
Site:	Dever C	North Reference:	Grid
Well:	Dever C10 (112043)	Survey Calculation Method:	Minimum Curvature
Wellbore:	Dever C10		
Design:	Dever C10 P01		

Planned Survey										
Measured Depth (ft)	Inclination (°)	Azimuth (°)	Vertical Depth (ft)	+N/-S (ft)	+E/-W (ft)	Map Northing (usft)	Map Easting (usft)	Latitude	Longitude	
4,319.51	24.76	218.08	4,056.00	-936.57	-744.97	14,365,437.52	878,363.23	39.525609297°N	107.702323430°W	
Mesaverde										
4,400.00	22.35	218.08	4,129.77	-961.89	-764.81	14,365,412.20	878,343.39	39.525538206°N	107.702391007°W	
4,500.00	19.35	218.08	4,223.21	-989.90	-786.76	14,365,384.19	878,321.44	39.525459549°N	107.702465776°W	
4,600.00	16.35	218.08	4,318.39	-1,014.02	-805.66	14,365,360.06	878,302.54	39.525391809°N	107.702530168°W	
4,700.00	13.35	218.08	4,415.04	-1,034.19	-821.47	14,365,339.89	878,286.74	39.525335171°N	107.702584006°W	
4,800.00	10.35	218.08	4,512.90	-1,050.36	-834.13	14,365,323.73	878,274.08	39.525289791°N	107.702627143°W	
4,900.00	7.35	218.08	4,611.70	-1,062.46	-843.62	14,365,311.62	878,264.59	39.525255793°N	107.702659460°W	
5,000.00	4.35	218.08	4,711.16	-1,070.48	-849.90	14,365,303.60	878,258.30	39.525233270°N	107.702680870°W	
5,100.00	1.35	218.08	4,811.03	-1,074.40	-852.97	14,365,299.69	878,255.24	39.525222284°N	107.702691312°W	
5,144.98	0.00	218.08	4,856.00	-1,074.81	-853.29	14,365,299.27	878,254.91	39.525221114°N	107.702692425°W	
VERTICAL at 5145 MD/4856 TVD - Price Coal										
5,200.00	0.00	218.08	4,911.02	-1,074.81	-853.29	14,365,299.27	878,254.91	39.525221114°N	107.702692425°W	
5,300.00	0.00	218.08	5,011.02	-1,074.81	-853.29	14,365,299.27	878,254.91	39.525221114°N	107.702692425°W	
5,400.00	0.00	218.08	5,111.02	-1,074.81	-853.29	14,365,299.27	878,254.91	39.525221114°N	107.702692425°W	
5,500.00	0.00	218.08	5,211.02	-1,074.81	-853.29	14,365,299.27	878,254.91	39.525221114°N	107.702692425°W	
5,600.00	0.00	218.08	5,311.02	-1,074.81	-853.29	14,365,299.27	878,254.91	39.525221114°N	107.702692425°W	
5,700.00	0.00	218.08	5,411.02	-1,074.81	-853.29	14,365,299.27	878,254.91	39.525221114°N	107.702692425°W	
5,800.00	0.00	218.08	5,511.02	-1,074.81	-853.29	14,365,299.27	878,254.91	39.525221114°N	107.702692425°W	
5,844.98	0.00	218.08	5,556.00	-1,074.81	-853.29	14,365,299.27	878,254.91	39.525221114°N	107.702692425°W	
Top Gas										
5,900.00	0.00	218.08	5,611.02	-1,074.81	-853.29	14,365,299.27	878,254.91	39.525221114°N	107.702692425°W	
6,000.00	0.00	218.08	5,711.02	-1,074.81	-853.29	14,365,299.27	878,254.91	39.525221114°N	107.702692425°W	
6,100.00	0.00	218.08	5,811.02	-1,074.81	-853.29	14,365,299.27	878,254.91	39.525221114°N	107.702692425°W	
6,200.00	0.00	218.08	5,911.02	-1,074.81	-853.29	14,365,299.27	878,254.91	39.525221114°N	107.702692425°W	
6,300.00	0.00	218.08	6,011.02	-1,074.81	-853.29	14,365,299.27	878,254.91	39.525221114°N	107.702692425°W	
6,400.00	0.00	218.08	6,111.02	-1,074.81	-853.29	14,365,299.27	878,254.91	39.525221114°N	107.702692425°W	
6,500.00	0.00	218.08	6,211.02	-1,074.81	-853.29	14,365,299.27	878,254.91	39.525221114°N	107.702692425°W	
6,600.00	0.00	218.08	6,311.02	-1,074.81	-853.29	14,365,299.27	878,254.91	39.525221114°N	107.702692425°W	
6,700.00	0.00	218.08	6,411.02	-1,074.81	-853.29	14,365,299.27	878,254.91	39.525221114°N	107.702692425°W	
6,744.98	0.00	218.08	6,456.00	-1,074.81	-853.29	14,365,299.27	878,254.91	39.525221114°N	107.702692425°W	
Cameo										
6,800.00	0.00	218.08	6,511.02	-1,074.81	-853.29	14,365,299.27	878,254.91	39.525221114°N	107.702692425°W	
6,900.00	0.00	218.08	6,611.02	-1,074.81	-853.29	14,365,299.27	878,254.91	39.525221114°N	107.702692425°W	
7,000.00	0.00	218.08	6,711.02	-1,074.81	-853.29	14,365,299.27	878,254.91	39.525221114°N	107.702692425°W	
7,100.00	0.00	218.08	6,811.02	-1,074.81	-853.29	14,365,299.27	878,254.91	39.525221114°N	107.702692425°W	
7,200.00	0.00	218.08	6,911.02	-1,074.81	-853.29	14,365,299.27	878,254.91	39.525221114°N	107.702692425°W	
7,300.00	0.00	218.08	7,011.02	-1,074.81	-853.29	14,365,299.27	878,254.91	39.525221114°N	107.702692425°W	
7,400.00	0.00	218.08	7,111.02	-1,074.81	-853.29	14,365,299.27	878,254.91	39.525221114°N	107.702692425°W	
7,500.00	0.00	218.08	7,211.02	-1,074.81	-853.29	14,365,299.27	878,254.91	39.525221114°N	107.702692425°W	
7,600.00	0.00	218.08	7,311.02	-1,074.81	-853.29	14,365,299.27	878,254.91	39.525221114°N	107.702692425°W	
7,700.00	0.00	218.08	7,411.02	-1,074.81	-853.29	14,365,299.27	878,254.91	39.525221114°N	107.702692425°W	
7,800.00	0.00	218.08	7,511.02	-1,074.81	-853.29	14,365,299.27	878,254.91	39.525221114°N	107.702692425°W	
7,844.98	0.00	218.08	7,556.00	-1,074.81	-853.29	14,365,299.27	878,254.91	39.525221114°N	107.702692425°W	
Rollins										
7,900.00	0.00	218.08	7,611.02	-1,074.81	-853.29	14,365,299.27	878,254.91	39.525221114°N	107.702692425°W	
8,000.00	0.00	218.08	7,711.02	-1,074.81	-853.29	14,365,299.27	878,254.91	39.525221114°N	107.702692425°W	
8,044.98	0.00	218.08	7,756.00	-1,074.81	-853.29	14,365,299.27	878,254.91	39.525221114°N	107.702692425°W	
TD at 8045 MD/7756 TVD - BH C10										

Database:	EDM5000	Local Co-ordinate Reference:	Site Dever C
Company:	Antero Resources	TVD Reference:	KB @ 5609.00ft (Original Well Elev)
Project:	Dever	MD Reference:	KB @ 5609.00ft (Original Well Elev)
Site:	Dever C	North Reference:	Grid
Well:	Dever C10 (112043)	Survey Calculation Method:	Minimum Curvature
Wellbore:	Dever C10		
Design:	Dever C10 P01		

Design Targets									
Target Name									
- hit/miss target	Dip Angle	Dip Dir.	TVD	+N/-S	+E/-W	Northing	Easting	Latitude	Longitude
- Shape	(°)	(°)	(ft)	(ft)	(ft)	(usft)	(usft)		
BH C10	0.00	360.00	7,756.00	-1,074.81	-853.29	14,365,299.27	878,254.91	39.525221114°N	107.702692425°W
- plan hits target center									
- Circle (radius 20.00)									

Casing Points					
Measured Depth	Vertical Depth			Casing Diameter	Hole Diameter
(ft)	(ft)	Name		(in)	(in)
1,000.00	1,000.00	Surf Csg at 1000 MD/TVD		5.500	6.000

Formations						
Measured Depth	Vertical Depth				Dip	Dip Direction
(ft)	(ft)	Name	Lithology		(°)	(°)
0.00	0.00	Wasatch				
4,319.51	4,056.00	Mesaverde				
5,144.98	4,856.00	Price Coal				
5,844.98	5,556.00	Top Gas				
6,744.98	6,456.00	Cameo				
7,844.98	7,556.00	Rollins				

Plan Annotations					
Measured Depth	Vertical Depth	Local Coordinates			
(ft)	(ft)	+N/-S	+E/-W	Comment	
(ft)	(ft)	(ft)	(ft)		
1,150.00	1,150.00	-1.60	9.85	Nudge 3°/100 at 1150 MD/TVD	
1,350.00	1,349.63	-6.83	0.79	Build 3°/100 at 1350 MD/TVD	
2,039.99	2,009.61	-146.08	-125.61	HOLD 26° at 2040 MD/2010 TVD	
4,273.21	4,014.19	-920.90	-732.70	DROP 3°/100 at 4273 MD/4014 TVD	
5,144.98	4,856.00	-1,074.81	-853.29	VERTICAL at 5145 MD/4856 TVD	
8,044.98	7,756.00	-1,074.81	-853.29	TD at 8045 MD/7756 TVD	