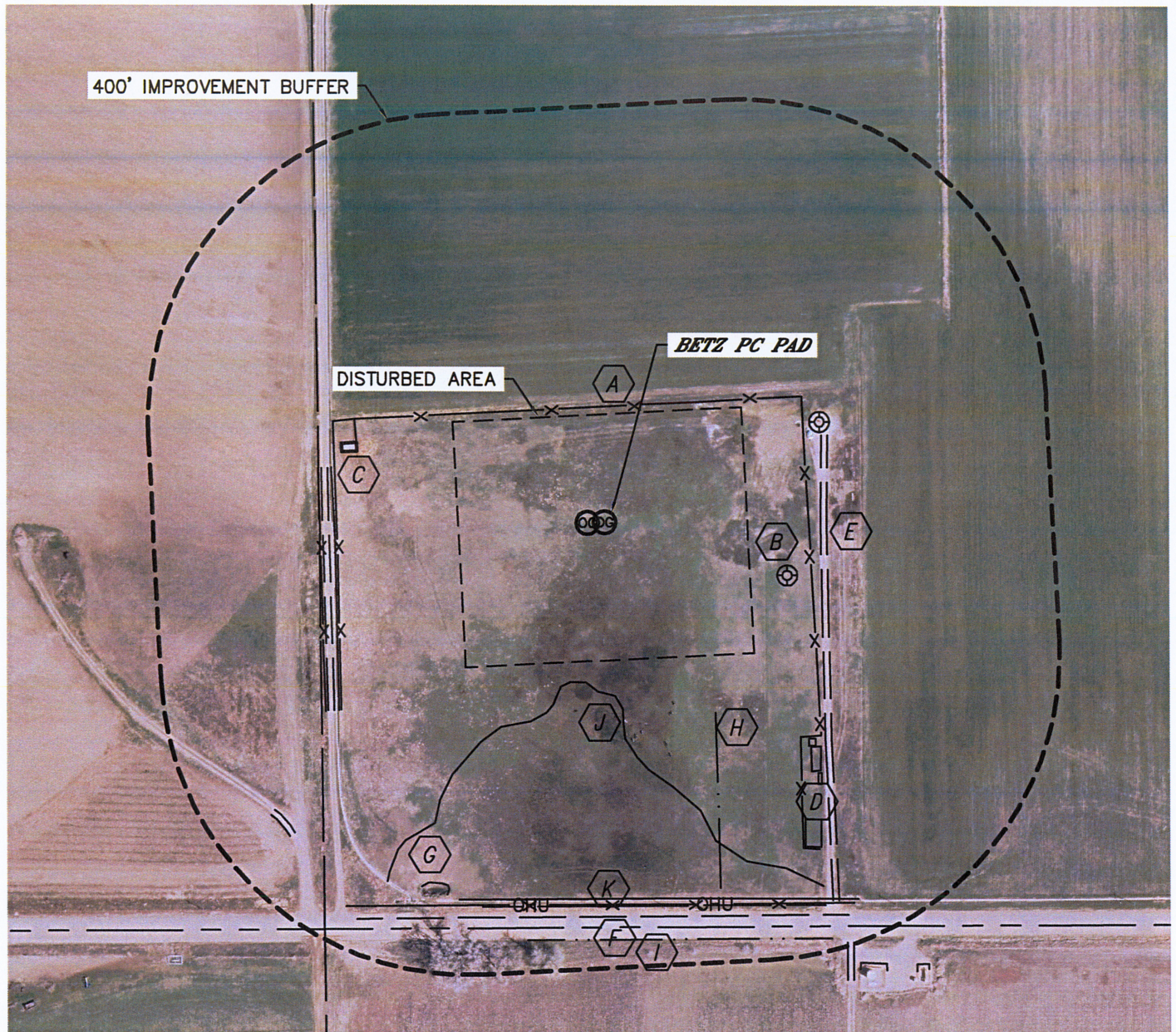


LOCATION DRAWING

BETZ PC G16-69HN, G09-22D

SECTION: 9
TOWNSHIP: 4N
RANGE: 65W



IMPROVEMENTS:

(DISTANCES MEASURED FROM THE BETZ PC G16-69HN LOCATION)

- | | |
|---|--|
| A FENCE 150' N, 266' E, 351' W,
374' W, 500' S | F COUNTY ROAD 46 514' S |
| B EX. WELL 250' SE, 311' NE | G POND 517' SW |
| C BUILDING 338' NW | H DITCH 287' SE, 491' S, 354' W |
| D PRODUCTION EQUIPMENT (NOBLE)
388' SE, 469' SE | I BARROW DITCH 544' S |
| E FIELD ROAD 362' W, 284' E, 572' SW | J WET AREA PER SAVAGE
DRAWING 210' S |
| | K OVERHEAD UTILITY 498' S |

NEAREST: BUILDING 338' NW, PUBLIC ROAD (CR 46) 514' S,
ABOVE GROUND UTILITY 498' S, RAILROAD 5280'+, PROPERTY LINE 375' W

