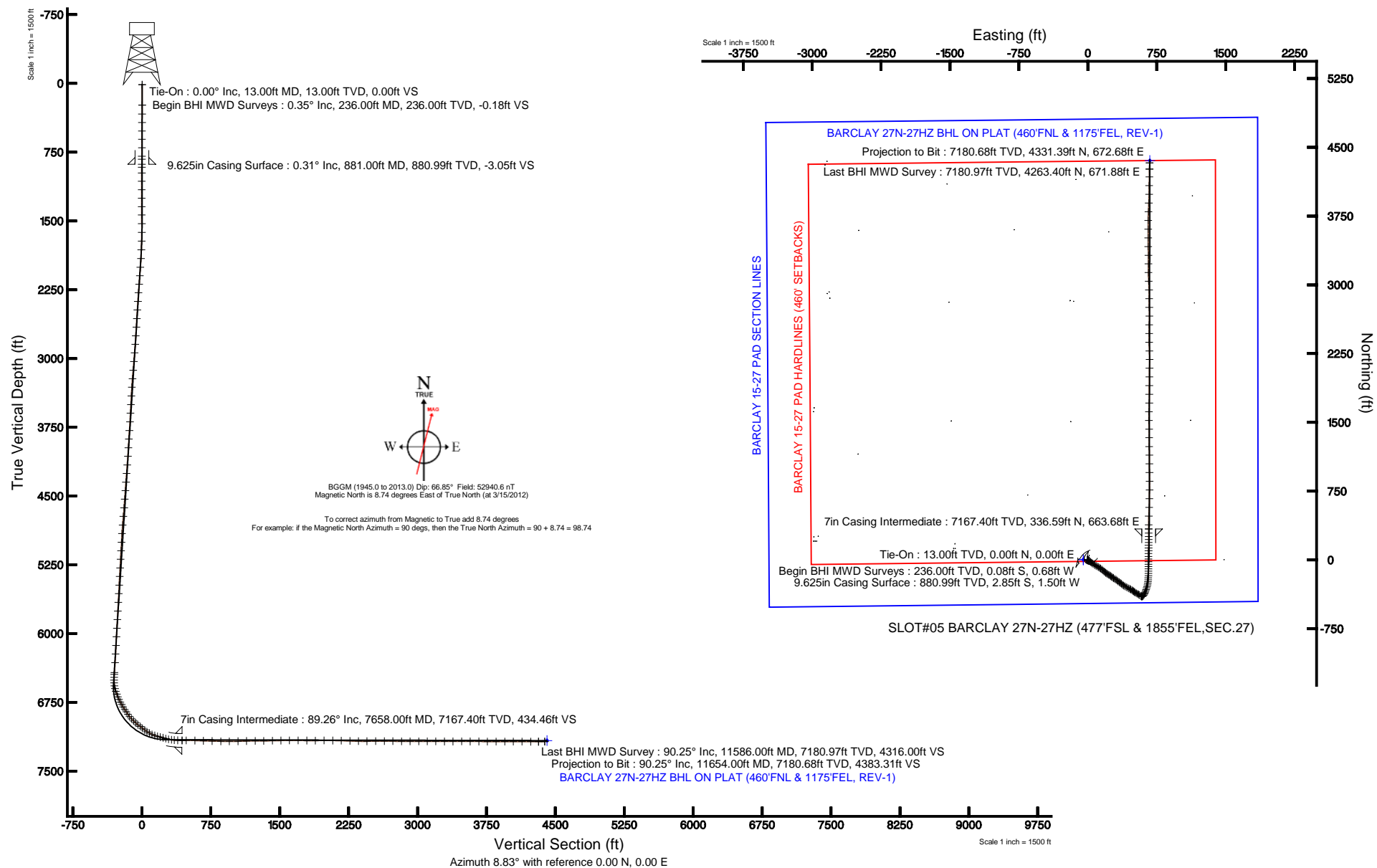


Location:	COLORADO	Slot:	SLOT#05 BARCLAY 27N-27HZ (477'FSL & 1855'FEL,SEC.27)
Field:	WELD COUNTY (KERR MCGEE)	Well:	BARCLAY 27N-27HZ
Facility:	SEC.27-T3N-R66W	Wellbore:	BARCLAY 27N-27HZ PWB

Plot reference wellpath is BARCLAY 27N-27HZ (REV-A.0) PWP	
True vertical depths are referenced to ENSIGN 145 (RKB)	Grid System: NAD83 / Lambert Colorado SP, Northern Zone (501), US feet
Measured depths are referenced to ENSIGN 145 (RKB)	North Reference: True north
ENSGN 145 (RKB) to Mean Sea Level: 4969 feet	Scale: True distance
Mean Sea Level to Mud line (At Slot: SLOT#05 BARCLAY 27N-27HZ (477FSL & 1855FELSEC.27): 0 feet)	Depths are in feet
Coordinates are in feet referenced to Slot	Created by: wlisiet02 on 3/23/2012





# Actual Wellpath Report

BARCLAY 27N-27HZ AWP

Page 1 of 6



REFERENCE WELLPATH IDENTIFICATION			
Operator	KERR-MCGEE OIL & GAS ONSHORE LP	Slot	SLOT#05 BARCLAY 27N-27HZ (477'FSL & 1855'FEL,SEC.27)
Area	COLORADO	Well	BARCLAY 27N-27HZ
Field	WELD COUNTY (KERR MCGEE)	Wellbore	BARCLAY 27N-27HZ AWB
Facility	SEC.27-T3N-R66W		

REPORT SETUP INFORMATION			
Projection System	NAD83 / Lambert Colorado SP, Northern Zone (501), US feet	Software System	WellArchitect® 3.0.2
North Reference	True	User	Wilsjef02
Scale	0.999957	Report Generated	3/23/2012 at 08:10:39
Convergence at slot	0.48° East	Database/Source file	WellArchitectDB/BARCLAY_27N-27HZ_AWB.xml

WELLPATH LOCATION						
	Local coordinates		Grid coordinates		Geographic coordinates	
	North[ft]	East[ft]	Easting[US ft]	Northing[US ft]	Latitude	Longitude
Slot Location	-4347.34	2841.65	3206618.82	1312996.37	40°11'24.742"N	104°45'37.472"W
Facility Reference Pt			3203741.63	1317320.00	40°12'07.704"N	104°46'14.088"W
Field Reference Pt			3197771.84	1268891.29	40°04'09.600"N	104°47'36.000"W

WELLPATH DATUM			
Calculation method	Minimum curvature	ENSIGN 145 (RKB) to Facility Vertical Datum	4969.00ft
Horizontal Reference Pt	Slot	ENSIGN 145 (RKB) to Mean Sea Level	4969.00ft
Vertical Reference Pt	ENSIGN 145 (RKB)	ENSIGN 145 (RKB) to Mud Line at Slot (SLOT#05 BARCLAY 27N-27HZ (477'FSL & 1855'FEL,SEC.27))	4969.00ft
MD Reference Pt	ENSIGN 145 (RKB)	Section Origin	N 0.00, E 0.00 ft
Field Vertical Reference	Mean Sea Level	Section Azimuth	8.83°



# Actual Wellpath Report

BARCLAY 27N-27HZ AWP

Page 2 of 6



## REFERENCE WELLPATH IDENTIFICATION

Operator	KERR-MCGEE OIL & GAS ONSHORE LP	Slot	SLOT#05 BARCLAY 27N-27HZ (477'FSL & 1855'FEL,SEC.27)
Area	COLORADO	Well	BARCLAY 27N-27HZ
Field	WELD COUNTY (KERR MCGEE)	Wellbore	BARCLAY 27N-27HZ AWB
Facility	SEC.27-T3N-R66W		

## WELLPATH DATA (150 stations) † = interpolated/extrapolated station

MD [ft]	Inclination [°]	Azimuth [°]	TVD [ft]	Vert Sect [ft]	North [ft]	East [ft]	Latitude	Longitude	DLS [°/100ft]	Comments
0.00†	0.000	263.300	0.00	0.00	0.00	0.00	40°11'24.742"N	104°45'37.472"W	0.00	
13.00	0.000	263.300	13.00	0.00	0.00	0.00	40°11'24.742"N	104°45'37.472"W	0.00	Tie-On
236.00	0.350	263.300	236.00	-0.18	-0.08	-0.68	40°11'24.741"N	104°45'37.481"W	0.16	Begin BHI MWD Surveys
333.00	0.220	231.610	333.00	-0.40	-0.23	-1.12	40°11'24.740"N	104°45'37.486"W	0.21	
425.00	0.290	205.110	425.00	-0.75	-0.55	-1.35	40°11'24.737"N	104°45'37.489"W	0.15	
517.00	0.430	193.190	516.99	-1.32	-1.10	-1.53	40°11'24.731"N	104°45'37.492"W	0.17	
609.00	0.350	189.690	608.99	-1.94	-1.71	-1.66	40°11'24.725"N	104°45'37.493"W	0.09	
701.00	0.300	198.550	700.99	-2.46	-2.22	-1.78	40°11'24.720"N	104°45'37.495"W	0.08	
793.00	0.230	143.670	792.99	-2.83	-2.59	-1.75	40°11'24.716"N	104°45'37.495"W	0.27	
827.00	0.190	128.900	826.99	-2.91	-2.68	-1.66	40°11'24.715"N	104°45'37.493"W	0.20	
914.00	0.390	140.950	913.99	-3.18	-3.00	-1.37	40°11'24.712"N	104°45'37.490"W	0.24	
975.00	0.260	146.110	974.99	-3.42	-3.28	-1.16	40°11'24.710"N	104°45'37.487"W	0.22	
1067.00	0.320	133.320	1066.99	-3.72	-3.63	-0.85	40°11'24.706"N	104°45'37.483"W	0.10	
1159.00	0.290	174.030	1158.99	-4.09	-4.04	-0.64	40°11'24.702"N	104°45'37.480"W	0.23	
1251.00	0.220	128.190	1250.98	-4.40	-4.38	-0.48	40°11'24.699"N	104°45'37.478"W	0.23	
1343.00	1.200	88.130	1342.98	-4.31	-4.46	0.62	40°11'24.698"N	104°45'37.464"W	1.13	
1435.00	1.520	83.370	1434.95	-3.80	-4.28	2.80	40°11'24.700"N	104°45'37.436"W	0.37	
1530.00	1.760	80.130	1529.91	-3.00	-3.89	5.49	40°11'24.704"N	104°45'37.401"W	0.27	
1625.00	1.860	117.610	1624.87	-3.03	-4.35	8.29	40°11'24.699"N	104°45'37.365"W	1.23	
1720.00	2.800	133.700	1719.79	-4.85	-6.67	11.33	40°11'24.676"N	104°45'37.326"W	1.20	
1815.00	4.120	129.520	1814.61	-7.92	-10.44	15.64	40°11'24.639"N	104°45'37.270"W	1.41	
1910.00	5.930	133.870	1909.25	-12.48	-16.02	21.81	40°11'24.584"N	104°45'37.191"W	1.95	
2005.00	7.600	130.160	2003.58	-18.57	-23.47	30.15	40°11'24.510"N	104°45'37.083"W	1.82	
2100.00	8.250	128.170	2097.67	-25.17	-31.73	40.31	40°11'24.428"N	104°45'36.953"W	0.74	
2193.00	9.940	124.450	2189.50	-31.91	-40.40	52.18	40°11'24.343"N	104°45'36.800"W	1.92	
2288.00	9.230	124.850	2283.17	-38.80	-49.39	65.19	40°11'24.254"N	104°45'36.632"W	0.75	
2383.00	9.970	122.250	2376.84	-45.41	-58.13	78.40	40°11'24.168"N	104°45'36.462"W	0.90	
2478.00	9.710	120.360	2470.45	-51.62	-66.57	92.27	40°11'24.084"N	104°45'36.283"W	0.44	
2573.00	8.790	118.910	2564.21	-57.06	-74.13	105.54	40°11'24.009"N	104°45'36.112"W	1.00	
2668.00	8.950	123.520	2658.08	-62.64	-81.72	118.05	40°11'23.934"N	104°45'35.951"W	0.77	
2763.00	9.040	121.050	2751.91	-68.54	-89.65	130.61	40°11'23.856"N	104°45'35.789"W	0.42	
2858.00	8.140	126.100	2845.84	-74.45	-97.46	142.43	40°11'23.779"N	104°45'35.637"W	1.24	
2952.00	9.070	129.240	2938.78	-81.25	-106.07	153.55	40°11'23.694"N	104°45'35.493"W	1.11	
3048.00	9.270	129.830	3033.56	-89.06	-115.81	165.35	40°11'23.598"N	104°45'35.341"W	0.23	
3143.00	9.140	131.600	3127.33	-97.09	-125.72	176.87	40°11'23.500"N	104°45'35.193"W	0.33	
3237.00	7.510	131.640	3220.34	-104.46	-134.76	187.04	40°11'23.410"N	104°45'35.062"W	1.73	
3332.00	7.500	128.050	3314.53	-110.85	-142.71	196.56	40°11'23.332"N	104°45'34.939"W	0.49	
3427.00	7.490	123.920	3408.72	-116.50	-149.98	206.58	40°11'23.260"N	104°45'34.810"W	0.57	
3522.00	7.390	123.290	3502.92	-121.66	-156.79	216.83	40°11'23.193"N	104°45'34.678"W	0.14	
3617.00	7.610	119.640	3597.10	-126.42	-163.26	227.40	40°11'23.129"N	104°45'34.542"W	0.55	
3712.00	8.150	123.090	3691.21	-131.43	-170.04	238.51	40°11'23.062"N	104°45'34.399"W	0.76	
3807.00	8.100	129.930	3785.26	-137.65	-178.01	249.29	40°11'22.983"N	104°45'34.260"W	1.02	
3902.00	7.500	122.530	3879.38	-143.60	-185.65	259.65	40°11'22.907"N	104°45'34.126"W	1.23	
3997.00	7.850	126.010	3973.53	-149.06	-192.79	270.12	40°11'22.837"N	104°45'33.991"W	0.61	
4092.00	8.930	123.070	4067.51	-155.05	-200.63	281.55	40°11'22.759"N	104°45'33.844"W	1.22	
4187.00	9.870	123.610	4161.23	-161.49	-209.16	294.51	40°11'22.675"N	104°45'33.677"W	0.99	
4282.00	9.700	125.050	4254.85	-168.44	-218.26	307.84	40°11'22.585"N	104°45'33.505"W	0.31	
4377.00	8.790	128.500	4348.62	-175.57	-227.38	320.07	40°11'22.495"N	104°45'33.348"W	1.12	
4471.00	8.630	124.440	4441.53	-182.17	-235.84	331.51	40°11'22.411"N	104°45'33.200"W	0.68	
4566.00	8.910	126.740	4535.42	-188.70	-244.27	343.29	40°11'22.328"N	104°45'33.049"W	0.47	
4661.00	8.570	127.240	4629.32	-195.51	-252.96	354.82	40°11'22.242"N	104°45'32.900"W	0.37	
4756.00	9.550	132.580	4723.14	-203.25	-262.57	366.25	40°11'22.147"N	104°45'32.753"W	1.36	
4851.00	9.450	129.280	4816.83	-211.59	-272.84	378.09	40°11'22.046"N	104°45'32.600"W	0.58	
4946.00	8.730	121.330	4910.64	-218.30	-281.53	390.29	40°11'21.960"N	104°45'32.443"W	1.52	
5041.00	9.550	116.790	5004.44	-223.49	-288.83	403.48	40°11'21.888"N	104°45'32.273"W	1.15	
5135.00	9.820	117.170	5097.10	-228.41	-296.00	417.58	40°11'21.817"N	104°45'32.091"W	0.30	
5230.00	9.650	118.540	5190.73	-233.65	-303.51	431.78	40°11'21.743"N	104°45'31.908"W	0.30	
5325.00	9.130	119.050	5284.46	-238.94	-310.97	445.36	40°11'21.669"N	104°45'31.733"W	0.55	
5420.00	8.370	120.010	5378.35	-244.04	-318.09	457.94	40°11'21.599"N	104°45'31.571"W	0.81	
5515.00	7.980	121.080	5472.38	-249.04	-324.95	469.57	40°11'21.531"N	104°45'31.421"W	0.44	



# Actual Wellpath Report

BARCLAY 27N-27HZ AWP

Page 3 of 6



REFERENCE WELLPATH IDENTIFICATION			
Operator	KERR-MCGEE OIL & GAS ONSHORE LP	Slot	SLOT#05 BARCLAY 27N-27HZ (477'FSL & 1855'FEL,SEC.27)
Area	COLORADO	Well	BARCLAY 27N-27HZ
Field	WELD COUNTY (KERR MCGEE)	Wellbore	BARCLAY 27N-27HZ AWB
Facility	SEC.27-T3N-R66W		

WELLPATH DATA (150 stations) † = interpolated/extrapolated station										
MD [ft]	Inclination [°]	Azimuth [°]	TVD [ft]	Vert Sect [ft]	North [ft]	East [ft]	Latitude	Longitude	DLS [°/100ft]	Comments
5610.00	7.320	122.180	5566.54	-253.94	-331.58	480.34	40°11'21.465"N	104°45'31.283"W	0.71	
5705.00	6.820	123.830	5660.82	-258.72	-337.94	490.15	40°11'21.402"N	104°45'31.156"W	0.57	
5800.00	6.280	127.380	5755.20	-263.59	-344.24	498.97	40°11'21.340"N	104°45'31.043"W	0.71	
5894.00	6.350	127.440	5848.63	-268.53	-350.52	507.18	40°11'21.278"N	104°45'30.937"W	0.07	
5989.00	7.750	125.180	5942.91	-273.89	-357.40	516.59	40°11'21.210"N	104°45'30.816"W	1.50	
6084.00	8.900	118.630	6036.91	-279.23	-364.62	528.27	40°11'21.139"N	104°45'30.665"W	1.57	
6179.00	8.340	116.820	6130.83	-283.84	-371.25	540.87	40°11'21.073"N	104°45'30.503"W	0.65	
6274.00	8.360	122.750	6224.83	-288.77	-378.09	552.83	40°11'21.006"N	104°45'30.349"W	0.91	
6369.00	8.680	124.070	6318.78	-294.63	-385.84	564.57	40°11'20.929"N	104°45'30.197"W	0.39	
6478.00	8.640	122.030	6426.54	-301.36	-394.79	578.33	40°11'20.841"N	104°45'30.020"W	0.28	
6498.00	8.400	122.580	6446.31	-302.54	-396.38	580.83	40°11'20.825"N	104°45'29.988"W	1.27	
6530.00	8.060	121.740	6477.99	-304.36	-398.81	584.71	40°11'20.801"N	104°45'29.938"W	1.13	
6562.00	7.330	102.050	6509.70	-305.35	-400.42	588.62	40°11'20.785"N	104°45'29.888"W	8.50	
6593.00	9.080	71.450	6540.40	-304.33	-400.06	592.87	40°11'20.789"N	104°45'29.833"W	14.95	
6625.00	12.700	57.560	6571.82	-300.85	-397.36	598.24	40°11'20.815"N	104°45'29.764"W	13.90	
6656.00	16.180	42.990	6601.85	-295.02	-392.37	604.06	40°11'20.864"N	104°45'29.689"W	16.15	
6688.00	20.290	30.320	6632.25	-286.17	-384.32	609.91	40°11'20.944"N	104°45'29.613"W	17.78	
6720.00	22.030	25.960	6662.09	-275.27	-374.13	615.34	40°11'21.045"N	104°45'29.543"W	7.33	
6751.00	22.510	24.360	6690.78	-263.99	-363.50	620.33	40°11'21.150"N	104°45'29.479"W	2.49	
6783.00	26.260	21.140	6719.92	-251.17	-351.31	625.41	40°11'21.270"N	104°45'29.413"W	12.43	
6815.00	28.720	19.690	6748.30	-236.70	-337.46	630.55	40°11'21.407"N	104°45'29.347"W	7.97	
6846.00	29.080	19.490	6775.44	-221.98	-323.35	635.58	40°11'21.547"N	104°45'29.282"W	1.20	
6878.00	32.090	17.300	6802.99	-205.93	-307.90	640.70	40°11'21.699"N	104°45'29.216"W	10.03	
6909.00	33.970	15.680	6828.98	-189.18	-291.70	645.49	40°11'21.859"N	104°45'29.155"W	6.70	
6941.00	33.660	14.500	6855.57	-171.48	-274.50	650.13	40°11'22.029"N	104°45'29.095"W	2.27	
6973.00	34.010	8.000	6882.15	-153.70	-257.05	653.59	40°11'22.202"N	104°45'29.050"W	11.36	
7004.00	37.610	5.850	6907.29	-135.58	-239.05	655.77	40°11'22.380"N	104°45'28.922"W	12.30	
7036.00	42.620	4.060	6931.76	-115.02	-218.51	657.53	40°11'22.583"N	104°45'29.000"W	16.06	
7068.00	46.020	3.480	6954.65	-92.75	-196.21	659.00	40°11'22.803"N	104°45'28.981"W	10.70	
7099.00	48.550	2.350	6975.68	-70.10	-173.46	660.15	40°11'23.028"N	104°45'28.966"W	8.59	
7131.00	52.310	0.660	6996.06	-45.64	-148.81	660.79	40°11'23.271"N	104°45'28.958"W	12.43	
7163.00	53.230	0.100	7015.42	-20.44	-123.33	660.96	40°11'23.523"N	104°45'28.955"W	3.19	
7194.00	53.000	359.620	7034.02	4.05	-98.54	660.90	40°11'23.768"N	104°45'28.956"W	1.44	
7226.00	52.820	359.060	7053.32	29.23	-73.01	660.60	40°11'24.020"N	104°45'28.960"W	1.51	
7257.00	55.410	359.980	7071.49	54.01	-47.90	660.39	40°11'24.269"N	104°45'28.963"W	8.69	
7289.00	60.620	0.280	7088.44	80.83	-20.77	660.46	40°11'24.537"N	104°45'28.962"W	16.30	
7321.00	66.080	0.710	7102.78	109.12	7.82	660.71	40°11'24.819"N	104°45'28.958"W	17.10	
7352.00	72.410	0.950	7113.76	137.81	36.79	661.13	40°11'25.105"N	104°45'28.953"W	20.43	
7384.00	75.110	0.810	7122.71	168.24	67.51	661.60	40°11'25.409"N	104°45'28.947"W	8.45	
7416.00	75.090	0.360	7130.94	198.84	98.43	661.92	40°11'25.715"N	104°45'28.943"W	1.36	
7447.00	75.110	0.590	7138.91	228.48	128.39	662.16	40°11'26.011"N	104°45'28.940"W	0.72	
7479.00	75.100	0.130	7147.14	259.07	159.31	662.36	40°11'26.316"N	104°45'28.937"W	1.39	
7510.00	77.450	0.860	7154.49	288.87	189.42	662.62	40°11'26.614"N	104°45'28.934"W	7.92	
7542.00	82.480	0.650	7160.07	320.05	220.92	663.03	40°11'26.925"N	104°45'28.928"W	15.73	
7574.00	84.190	0.580	7163.78	351.51	252.70	663.38	40°11'27.239"N	104°45'28.924"W	5.35	
7612.00	88.090	0.250	7166.34	389.01	290.61	663.65	40°11'27.614"N	104°45'28.920"W	10.30	
7658.00†	89.260	359.830	7167.40	434.46	336.59	663.68	40°11'28.068"N	104°45'28.920"W	2.70	7" Casing Point
7704.00	90.430	359.410	7167.53	479.86	382.59	663.38	40°11'28.523"N	104°45'28.924"W	2.70	
7799.00	88.400	2.130	7168.50	573.91	477.56	664.65	40°11'29.461"N	104°45'28.907"W	3.57	
7894.00	88.050	2.990	7171.44	668.29	572.42	668.89	40°11'30.399"N	104°45'28.853"W	0.98	
7989.00	88.980	359.830	7173.90	762.45	667.35	671.23	40°11'31.337"N	104°45'28.823"W	3.47	
8084.00	87.880	1.850	7176.50	856.49	762.30	672.62	40°11'32.275"N	104°45'28.805"W	2.42	
8179.00	90.370	359.440	7177.96	950.50	857.26	673.69	40°11'33.213"N	104°45'28.791"W	3.65	
8274.00	91.640	358.950	7176.29	1044.14	952.24	672.36	40°11'34.152"N	104°45'28.808"W	1.43	
8369.00	91.510	359.580	7173.68	1137.78	1047.19	671.14	40°11'35.090"N	104°45'28.824"W	0.68	
8464.00	89.500	359.410	7172.84	1231.52	1142.18	670.30	40°11'36.029"N	104°45'28.834"W	2.12	
8558.00	91.130	359.010	7172.32	1324.19	1236.17	669.00	40°11'36.958"N	104°45'28.851"W	1.79	
8654.00	91.310	359.930	7170.28	1418.89	1332.14	668.12	40°11'37.906"N	104°45'28.863"W	0.98	
8748.00	90.890	359.270	7168.48	1511.66	1426.12	667.46	40°11'38.835"N	104°45'28.871"W	0.83	
8843.00	90.860	358.870	7167.02	1605.27	1521.10	665.92	40°11'39.773"N	104°45'28.891"W	0.42	



# Actual Wellpath Report

BARCLAY 27N-27HZ AWP

Page 4 of 6



## REFERENCE WELLPATH IDENTIFICATION

Operator	KERR-MCGEE OIL & GAS ONSHORE LP	Slot	SLOT#05 BARCLAY 27N-27HZ (477'FSL & 1855'FEL,SEC.27)
Area	COLORADO	Well	BARCLAY 27N-27HZ
Field	WELD COUNTY (KERR MCGEE)	Wellbore	BARCLAY 27N-27HZ AWB
Facility	SEC.27-T3N-R66W		

## WELLPATH DATA (150 stations)

MD [ft]	Inclination [°]	Azimuth [°]	TVD [ft]	Vert Sect [ft]	North [ft]	East [ft]	Latitude	Longitude	DLS [°/100ft]	Comments
8938.00	88.790	2.070	7167.32	1699.25	1616.08	666.70	40°11'40.712"N	104°45'28.881"W	4.01	
9033.00	89.290	1.090	7168.91	1793.47	1711.02	669.32	40°11'41.650"N	104°45'28.847"W	1.16	
9128.00	90.590	359.260	7169.01	1887.38	1806.02	669.61	40°11'42.589"N	104°45'28.843"W	2.36	
9223.00	90.430	0.760	7168.16	1981.26	1901.01	669.62	40°11'43.528"N	104°45'28.843"W	1.59	
9318.00	89.340	0.560	7168.35	2075.29	1996.00	670.72	40°11'44.466"N	104°45'28.829"W	1.17	
9413.00	88.390	1.080	7170.23	2169.34	2090.97	672.08	40°11'45.405"N	104°45'28.811"W	1.14	
9508.00	88.180	359.680	7173.08	2263.27	2185.93	672.71	40°11'46.343"N	104°45'28.803"W	1.49	
9602.00	88.700	358.090	7175.64	2355.82	2279.87	670.88	40°11'47.272"N	104°45'28.827"W	1.78	
9697.00	90.530	359.190	7176.27	2449.31	2374.84	668.62	40°11'48.210"N	104°45'28.856"W	2.25	
9792.00	90.620	0.110	7175.32	2543.09	2469.83	668.04	40°11'49.149"N	104°45'28.863"W	0.97	
9887.00	89.790	1.240	7174.98	2637.13	2564.82	669.16	40°11'50.087"N	104°45'28.849"W	1.48	
9982.00	89.260	0.160	7175.77	2731.17	2659.81	670.32	40°11'51.026"N	104°45'28.834"W	1.27	
10077.00	89.540	358.920	7176.76	2824.92	2754.80	669.56	40°11'51.965"N	104°45'28.843"W	1.34	
10172.00	90.030	359.580	7177.12	2918.59	2849.79	668.32	40°11'52.903"N	104°45'28.859"W	0.87	
10267.00	90.360	359.070	7176.80	3012.29	2944.78	667.20	40°11'53.842"N	104°45'28.874"W	0.64	
10361.00	89.100	357.120	7177.24	3104.64	3038.72	664.07	40°11'54.771"N	104°45'28.914"W	2.47	
10456.00	89.870	358.780	7178.09	3197.92	3133.65	660.67	40°11'55.709"N	104°45'28.958"W	1.93	
10551.00	89.840	0.990	7178.33	3291.76	3228.64	660.48	40°11'56.647"N	104°45'28.960"W	2.33	
10646.00	90.180	359.240	7178.32	3385.66	3323.64	660.67	40°11'57.586"N	104°45'28.958"W	1.88	
10741.00	89.840	358.320	7178.30	3479.20	3418.62	658.65	40°11'58.525"N	104°45'28.984"W	1.03	
10836.00	90.000	0.330	7178.43	3572.89	3513.61	657.53	40°11'59.463"N	104°45'28.998"W	2.12	
10931.00	89.900	359.680	7178.52	3666.77	3608.61	657.54	40°12'00.402"N	104°45'28.998"W	0.69	
11026.00	89.380	1.070	7179.11	3760.73	3703.60	658.16	40°12'01.341"N	104°45'28.990"W	1.56	
11121.00	90.150	2.340	7179.50	3855.00	3798.55	660.99	40°12'02.279"N	104°45'28.954"W	1.56	
11216.00	89.940	2.080	7179.43	3949.36	3893.48	664.65	40°12'03.217"N	104°45'28.906"W	0.35	
11310.00	89.600	1.470	7179.81	4042.65	3987.44	667.56	40°12'04.146"N	104°45'28.869"W	0.74	
11405.00	89.410	0.510	7180.63	4136.76	4082.42	669.21	40°12'05.084"N	104°45'28.848"W	1.03	
11500.00	89.970	1.110	7181.14	4230.83	4177.41	670.55	40°12'06.023"N	104°45'28.830"W	0.86	
11586.00	90.250	0.670	7180.97	4316.00	4263.40	671.88	40°12'06.873"N	104°45'28.813"W	0.61	Last BHI MWD Survey
11654.00	90.250	0.670	7180.68	4383.31	4331.39	672.68	40°12'07.545"N	104°45'28.803"W	0.00	Projection to Bit

## HOLE & CASING SECTIONS - Ref Wellbore: BARCLAY 27N-27HZ AWB Ref Wellpath: BARCLAY 27N-27HZ AWP

String/Diameter	Start MD [ft]	End MD [ft]	Interval [ft]	Start TVD [ft]	End TVD [ft]	Start N/S [ft]	Start E/W [ft]	End N/S [ft]	End E/W [ft]
13.5in Open Hole	13.00	881.00	868.00	13.00	880.99	0.00	0.00	-2.85	-1.50
9.625in Casing Surface	13.00	881.00	868.00	13.00	880.99	0.00	0.00	-2.85	-1.50
8.75in Open Hole	881.00	7668.00	6787.00	880.99	7167.51	-2.85	-1.50	346.59	663.64
7in Casing Intermediate	13.00	7658.00	7645.00	13.00	7167.40	0.00	0.00	336.59	663.68
6.125in Open Hole	7658.00	10145.00	2487.00	7167.40	7177.10	336.59	663.68	2822.79	668.56



# Actual Wellpath Report

BARCLAY 27N-27HZ AWP

Page 5 of 6



REFERENCE WELLPATH IDENTIFICATION			
Operator	KERR-MCGEE OIL & GAS ONSHORE LP	Slot	SLOT#05 BARCLAY 27N-27HZ (477'FSL & 1855'FEL,SEC.27)
Area	COLORADO	Well	BARCLAY 27N-27HZ
Field	WELD COUNTY (KERR MCGEE)	Wellbore	BARCLAY 27N-27HZ AWB
Facility	SEC.27-T3N-R66W		

TARGETS									
Name	MD [ft]	TVD [ft]	North [ft]	East [ft]	Grid East [US ft]	Grid North [US ft]	Latitude	Longitude	Shape
BARCLAY 15-27 PAD SECTION LINES		0.00	0.32	-48.09	3206570.73	1312996.29	40°11'24.745"N	104°45'38.092"W	polygon
BARCLAY 27N-27HZ BHL ON PLAT (460'FNL & 1175'FEL, REV-1)		7169.00	4356.22	676.54	3207258.97	1317357.88	40°12'07.790"N	104°45'28.753"W	point
BARCLAY 15-27 PAD HARDLINES (460' SETBACKS)		7417.00	0.32	-48.09	3206570.73	1312996.29	40°11'24.745"N	104°45'38.092"W	polygon

WELLPATH COMPOSITION - Ref Wellbore: BARCLAY 27N-27HZ AWB					Ref Wellpath: BARCLAY 27N-27HZ AWP				
Start MD [ft]	End MD [ft]	Positional Uncertainty Model	Log Name/Comment			Wellbore			
13.00	827.00	NaviTrak (Standard)	BHI MWD SURVEYS 13 1/2" HOLE <236-827>			BARCLAY 27N-27HZ AWB			
827.00	7612.00	NaviTrak (Standard)	BHI MWD SURVEYS 8 3/4" HOLE <914-7612>			BARCLAY 27N-27HZ AWB			
7612.00	11586.00	OnTrak (Standard)	BHI MWD SURVEYS 6 1/8" HOLE <7704-10456>			BARCLAY 27N-27HZ AWB			
11586.00	11654.00	Blind Drilling (std)	Projection to bit			BARCLAY 27N-27HZ AWB			



# Actual Wellpath Report

BARCLAY 27N-27HZ AWP

Page 6 of 6



REFERENCE WELLPATH IDENTIFICATION			
Operator	KERR-MCGEE OIL & GAS ONSHORE LP	Slot	SLOT#05 BARCLAY 27N-27HZ (477'FSL & 1855'FEL,SEC.27)
Area	COLORADO	Well	BARCLAY 27N-27HZ
Field	WELD COUNTY (KERR MCGEE)	Wellbore	BARCLAY 27N-27HZ AWB
Facility	SEC.27-T3N-R66W		

WELLPATH COMMENTS				
MD [ft]	Inclination [°]	Azimuth [°]	TVD [ft]	Comment
13.00	0.000	263.300	13.00	Tie-On
236.00	0.350	263.300	236.00	Begin BHI MWD Surveys
7658.00	89.260	359.830	7167.40	7" Casing Point
11586.00	90.250	0.670	7180.97	Last BHI MWD Survey
11654.00	90.250	0.670	7180.68	Projection to Bit