

GREAT WESTERN OIL & GAS COMPANY

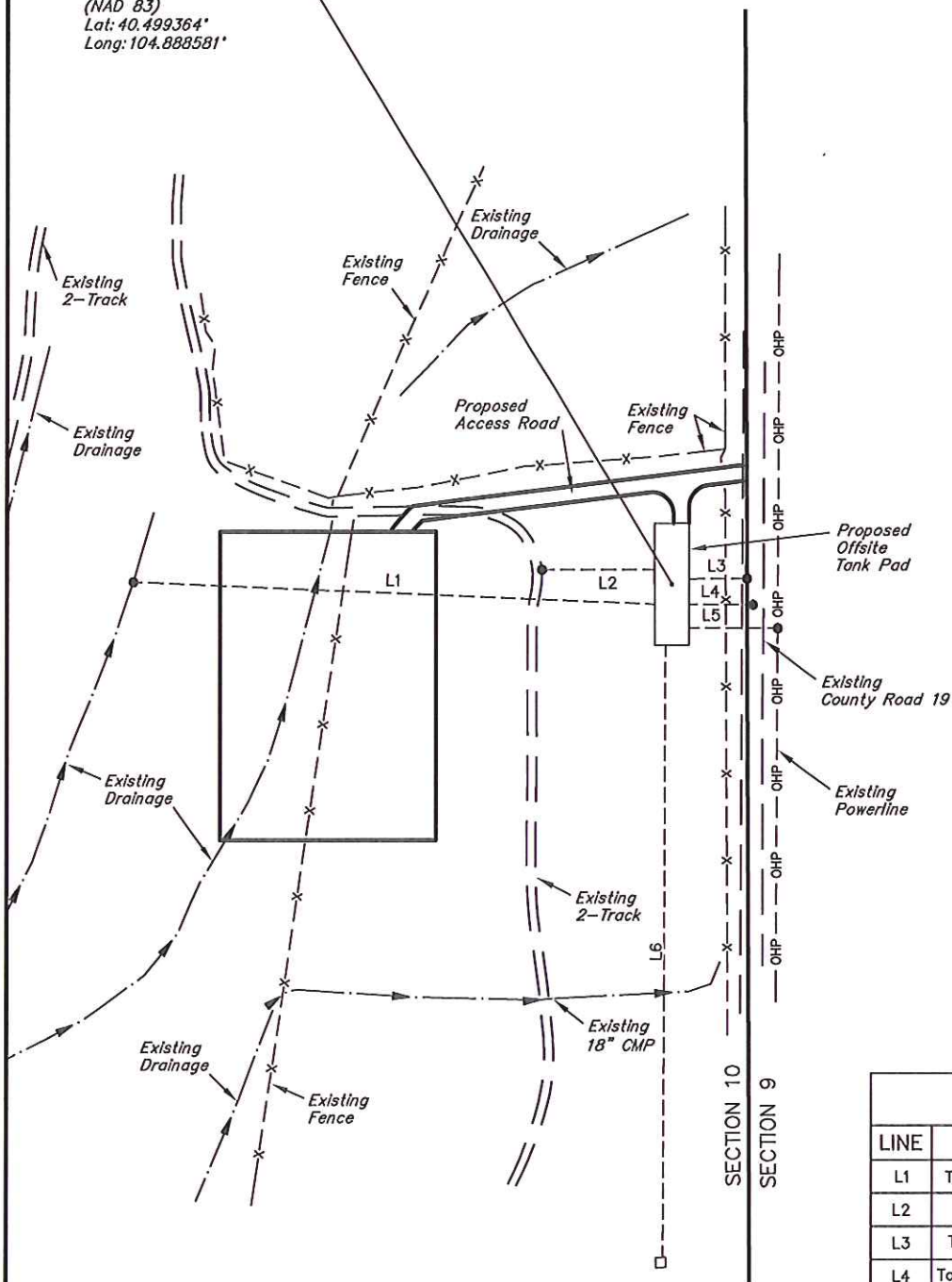
LOCATION PLAT FOR

De TIENNE FD #10-18 & #10-25D (TANK PAD)
SECTION 10, T6N, R67W, 6th P.M.
1914' FSL 87' FWL

SCALE: 1" = 200'
DATE: 05-21-12
DRAWN BY: T.B.



De TIENNE TANK PAD
(NAD 83)
Lat: 40.499364°
Long: 104.888581°



LINE TABLE

LINE	FEATURE	DIRECTION	LENGTH
L1	To Surface Water	S88°E	604'
L2	To 2-Track	EAST	131'
L3	To Property Line	WEST	67'
L4	To County Road 19	WEST	74'
L5	Powerline	WEST	102'
L6	To Building	NORTH	705'