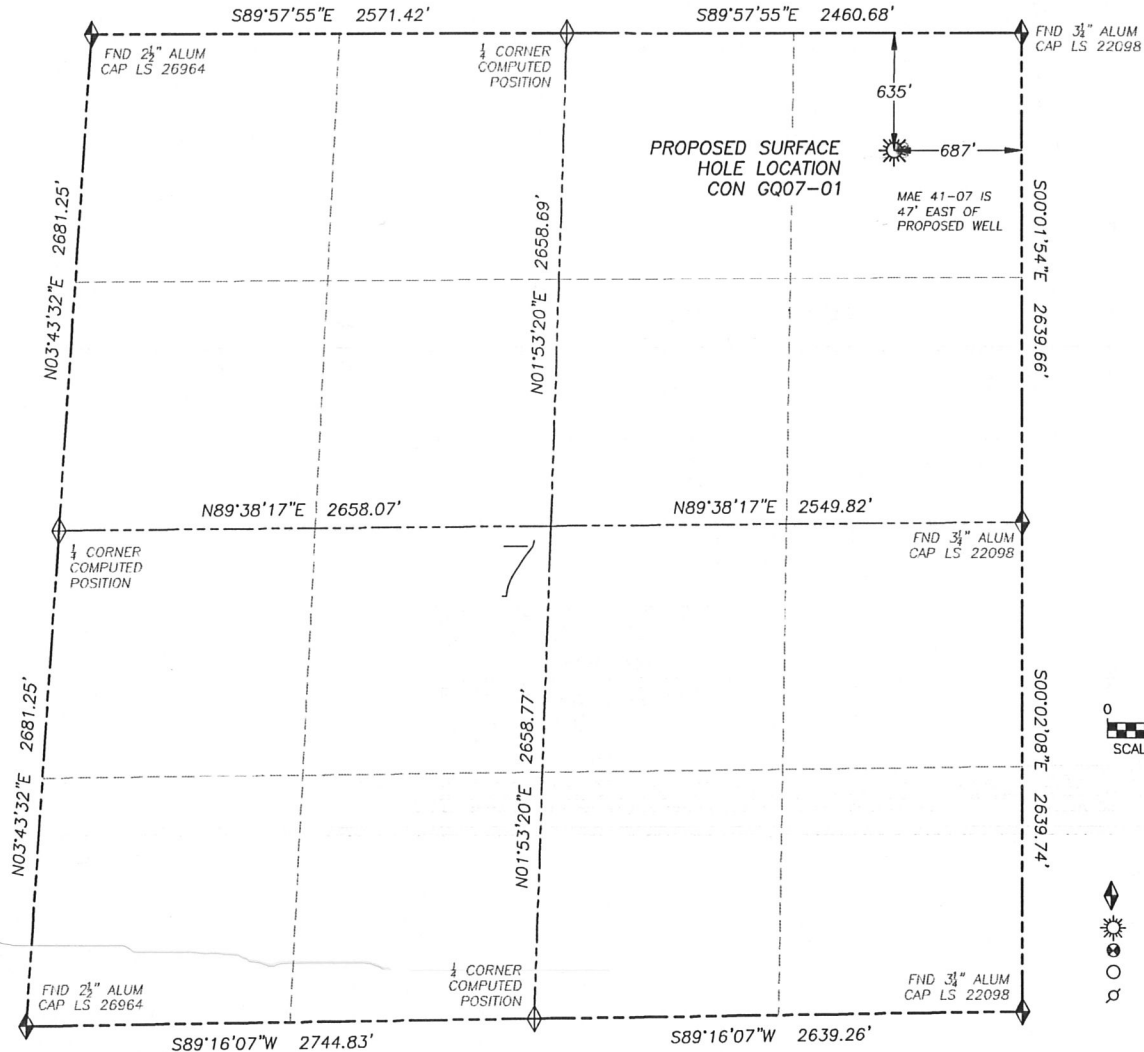


# WELL LOCATION CERTIFICATE CON GQ07-01

SECTION 7, TOWNSHIP 10 NORTH, RANGE 61 WEST OF THE 6TH PRINCIPAL MERIDIAN

**LEGEND**

- ◆ FOUND MONUMENT AS DESCRIBED
- ☀ PROPOSED WELL
- ⊙ EXISTING WELL
- BOTTOM HOLE
- ⊗ ABANDONED WELL

**NAD 83 LATITUDE AND LONGITUDE****CON GQ07-01 SURFACE HOLE:**

LATITUDE: N40.85425°  
 LONGITUDE: W104.24234°  
 ELEVATION: 5078'  
 FOOTAGE: 635' FNL, 687' FEL  
 PDOP: 1.8  
 QTR/QTR: NE4/NE4  
 PROP LINE: 635'± NORTH

**NEAREST EXISTING WELL:**

MAE 41-07 SURFACE HOLE  
 LATITUDE: N40.85424°  
 LONGITUDE: W104.24217°  
 ELEVATION: 5080'  
 47' EAST

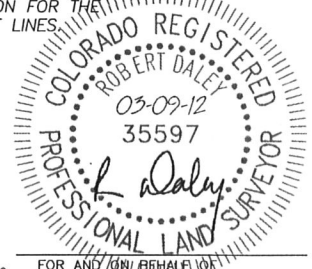
IN ACCORDANCE WITH A REQUEST FROM RYAN HAWKINS OF NOBLE ENERGY INC., DALEY LAND SURVEYING, INC. HAS DETERMINED THE SURFACE LOCATION OF THE CON GQ07-01 WELL TO BE 635' FNL, 687' FEL, AS MEASURED AT NINETY (90) DEGREES FROM THE SECTION LINES OF SECTION 7, TOWNSHIP 10 NORTH, RANGE 61 WEST OF THE 6TH PRINCIPAL MERIDIAN, WELD COUNTY, COLORADO.

I HEREBY CERTIFY THAT THIS WELL LOCATION CERTIFICATE WAS PREPARED BY ME OR UNDER MY DIRECT SUPERVISION, THAT THE WORK WAS COMPLETED ON 3/06/2012 FOR AND ON BEHALF OF NOBLE ENERGY, INC., AND THAT THIS MAP DOES NOT REPRESENT A BOUNDARY SURVEY, IT IS NOT A LAND SURVEY PLAT OR AN IMPROVEMENT SURVEY PLAT AND IT IS NOT TO BE RELIED UPON FOR THE ESTABLISHMENT OF FENCE, BUILDING OR OTHER FUTURE IMPROVEMENT LINES.

**NOTES:**

- 1) BEARINGS FOR THIS MAP ARE ASSUMED AND BASED UPON GPS OBSERVATIONS MADE BETWEEN MONUMENTS LOCATED AT THE NORTHEAST CORNER AND EAST QUARTER CORNER OF SECTION 7, T.10N., R.61W.
- 2) HORIZONTAL DATUM IS NAD83.
- 3) VERTICAL DATUM IS NAVD88 AND ORIGINATES FROM THE LOCAL C.O.R.S. NETWORK, UTILIZING THE GEOID09 MODEL.
- 4) SEE LOCATION DRAWING FOR VISIBLE IMPROVEMENTS WITHIN 400' OF PROPOSED DISTURBED AREA.
- 5) SURFACE USE: PASTURE.

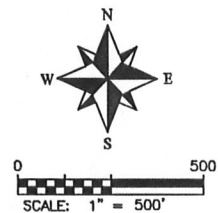
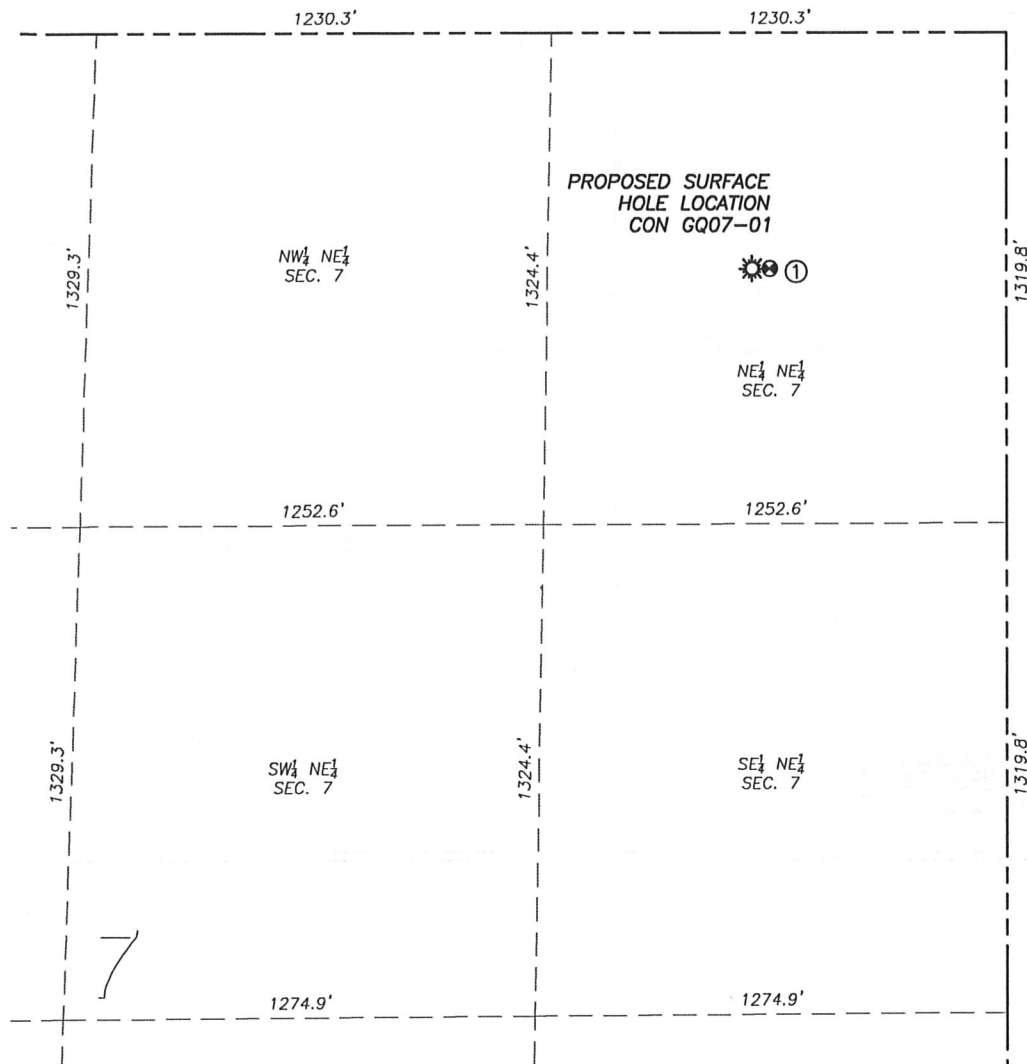
NOTICE: According to Colorado law you MUST commence any legal action based upon any defect in this W.L.C. within three years after you first discover such defect. In no event may any action based upon any such defect in this W.L.C. be commenced more than ten years from the date of the certification shown herein.



FOR AND ON BEHALF OF  
 DALEY LAND SURVEYING, INC.,  
 Robert Daley, PLS 35597

## SITE SKETCH CON GQ07-01

SECTION 7, TOWNSHIP 10 NORTH, RANGE 61 WEST OF THE 6TH PRINCIPAL MERIDIAN



## LEGEND

- FOUND MONUMENT AS DESCRIBED
- PROPOSED WELL
- EXISTING WELL
- BOTTOM HOLE
- ABANDONED WELL

①

MAE 41-07

NE/NE SEC. 7

636' FNL, 640' FEL

47' E OF PROPOSED

SURFACE HOLE LOCATION

LAT. N40.85424°

LONG. W104.24217°

EL: 5080'

PDOP 1.9

## NOTES:

1. THIS DOES NOT REPRESENT A BOUNDARY SURVEY
2. HORIZONTAL DATUM IS NAD83
3. VERTICAL DATUM IS NAVD88 AND ORIGINATES FROM THE LOCAL C.O.R.S. NETWORK, UTILIZING THE GEOID09 MODEL.