
CHEVRON - MID-CONTINENT EBIZ

**SKR 598-36-BV-21
SKINNER RIDGE
Garfield County , Colorado**

Cement Production Casing **20-Feb-2009**

Job Site Documents

The Road to Excellence Starts with Safety

Sold To #: 338668	Ship To #: 2695502	Quote #:	Sales Order #: 6513332
Customer: CHEVRON - MID-CONTINENT EBIZ		Customer Rep: Doherty, Ed	
Well Name: SKR		Well #: 598-36-BV-21	API/UWI #:
Field: SKINNER RIDGE	City (SAP): PARACHUTE	County/Parish: Garfield	State: Colorado
Contractor: CHEVRON		Rig/Platform Name/Num: H&P 316	
Job Purpose: Cement Production Casing			
Well Type: Development Well		Job Type: Cement Production Casing	
Sales Person: HARTLEY, RICHARD		Srvc Supervisor: DANIEL, EVERETT	MBU ID Emp #: 337325

Job Personnel

HES Emp Name	Exp Hrs	Emp #	HES Emp Name	Exp Hrs	Emp #	HES Emp Name	Exp Hrs	Emp #
BORSZICH, STEPHEN A	9	412388	DANIEL, EVERETT Dean	9	337325	HAMMOND, DENNIS C	9	287025
SMITH, CHRISTOPHER Scott	9	452619	STEMPKY, MICHAEL J	9	392967	VANALSTYNE, TROY L	9	420256

Equipment

HES Unit #	Distance-1 way	HES Unit #	Distance-1 way	HES Unit #	Distance-1 way	HES Unit #	Distance-1 way

Job Hours

Date	On Location Hours	Operating Hours	Date	On Location Hours	Operating Hours	Date	On Location Hours	Operating Hours
02/20/09	8	2.5	02/21/2009	1	.5			
TOTAL	9	3	Total is the sum of each column separately					

Job

Formation Name	Formation Depth (MD)	Top	Bottom	Form Type	Job depth MD	Job Depth TVD	Water Depth	Perforation Depth (MD)	From	To
				BHST	6595. ft	6595. ft				
						4. ft				

Job Times

Date	Time	Time Zone
20 - Feb - 2009	12:13	MST
20 - Feb - 2009	16:00	MST
20 - Feb - 2009	21:00	MST
20 - Feb - 2009	22:29	MST
21 - Feb - 2009	01:00	MST

Well Data

Description	New / Used	Max pressure psig	Size in	ID in	Weight lbm/ft	Thread	Grade	Top MD ft	Bottom MD ft	Top TVD ft	Bottom TVD ft
7 7/8 Open Hole				7.875				1320.	6550.		
4 1/2 Production Casing	Unknown		4.5	4.	11.6				6550.		
8 5/8 24# Surface Casing	Unknown		8.625	8.097	24.				1320.		

Sales/Rental/3rd Party (HES)

Description	Qty	Qty uom	Depth	Supplier
PLUG,CMTG,TOP,4 1/2,HWE,3.65 MIN/4.14 MA	1	EA		
PORT. DAS W/CEMWIN;ACQUIRE W/HES, ZI	1	JOB		
ADC (AUTO DENSITY CTRL) SYS, /JOB,ZI	1	JOB		

Tools and Accessories

Type	Size	Qty	Make	Depth	Type	Size	Qty	Make	Depth	Type	Size	Qty	Make
Guide Shoe					Packer					Top Plug			
Float Shoe					Bridge Plug					Bottom Plug			
Float Collar					Retainer					SSR plug set			
Insert Float										Plug Container			
Stage Tool										Centralizers			

Miscellaneous Materials

Gelling Agt	Conc	Surfactant	Conc	Acid Type	Qty	Conc %
Treatment Fld	Conc	Inhibitor	Conc	Sand Type	Size	Qty

HALLIBURTON**Cementing Job Summary**

Fluid Data									
Stage/Plug #: 1									
Fluid #	Stage Type	Fluid Name	Qty	Qty uom	Mixing Density lbm/gal	Yield ft ³ /sk	Mix Fluid Gal/sk	Rate bbl/min	Total Mix Fluid Gal/sk
1	Dyed Polyflake Spacer		50	bbl	8.33	.0	.0	.0	
2	Lead Cement	VARICEM (TM) CEMENT (452009)	400	sacks	12.8	1.55	7.15		7.7
	7.704 Gal	FRESH WATER							
3	Tail Cement	VARICEM (TM) CEMENT (452009)	630	sacks	13.2	1.43	6.19		6.72
	6.719 Gal	FRESH WATER							
4	KCL DISPLACEMENT		101.1	bbl	8.4	.0	.0	.0	
Calculated Values		Pressures		Volumes					
Displacement	101.1	Shut In: Instant		Lost Returns		Cement Slurry	180.9	Pad	
Top Of Cement	Surface	5 Min		Cement Returns	5	Actual Displacement	101.1	Treatment	
Frac Gradient		15 Min		Spacers	50	Load and Breakdown		Total Job	
Rates									
Circulating	6	Mixing	7	Displacement	8	Avg. Job	7		
Cement Left In Pipe	Amount	47.90 ft	Reason	Shoe Joint					
Frac Ring # 1 @	ID	Frac ring # 2 @	ID	Frac Ring # 3 @	ID	Frac Ring # 4 @	ID		
The Information Stated Herein Is Correct				Customer Representative Signature					

Cementing Job Log

The Road to Excellence Starts with Safety

Sold To #: 338668	Ship To #: 2695502	Quote #:	Sales Order #: 6513332
Customer: CHEVRON - MID-CONTINENT EBIZ	Customer Rep: Doherty, Ed		
Well Name: SKR	Well #: 598-36-BV-21	API/UWI #:	
Field: SKINNER RIDGE	City (SAP): PARACHUTE	County/Parish: Garfield	State: Colorado
Legal Description:			
Lat: N 0 deg. OR N 0 deg. 0 min. 0 secs.		Long: E 0 deg. OR E 0 deg. 0 min. 0 secs.	
Contractor: CHEVRON	Rig/Platform Name/Num: H&P 316		
Job Purpose: Cement Production Casing	Ticket Amount:		
Well Type: Development Well	Job Type: Cement Production Casing		
Sales Person: HARTLEY, RICHARD	Srvc Supervisor: DANIEL, EVERETT	MBU ID Emp #:	337325

Activity Description	Date/Time	Cht #	Rate bbl/ min	Volume bbl		Pressure psig		Comments
				Stage	Total	Tubing	Casing	
Call Out	02/20/2009 12:13							
Depart Yard Safety Meeting	02/20/2009 13:45							Discussed driving conditions, possible hazards, convoy order and safety concerns.
Depart from Service Center or Other Site	02/20/2009 14:00							Checked out HES pump (Elite 4)-660, Iron Trailer
Arrive at Location from Service Center	02/20/2009 16:00							Crew arrived on location 2.5 hours early
Assessment Of Location Safety Meeting	02/20/2009 16:05							
Comment	02/20/2009 16:10							Consult with Co. Rep. Verified calculations and materials on location including H2O and Cement totals
Safety Meeting - Pre Rig-Up	02/20/2009 16:15							Discussed job procedures and safety issues
Rig-Up Equipment	02/20/2009 16:20							Iron to rig, Iron to Pit, Bulk hoses to 660 and silo, Two water lines
Rig-Up Completed	02/20/2009 17:20							
Waiting - Arrived Early to Location - Start Time	02/20/2009 17:20							
Waiting - Arrived Early to Location - End Time	02/20/2009 18:30							
Safety Meeting - Pre Job	02/20/2009 20:45							Discussed job procedures and safety issues
Start Job	02/20/2009 21:00							
Prime Pumps	02/20/2009 21:01		1	2			404.0	

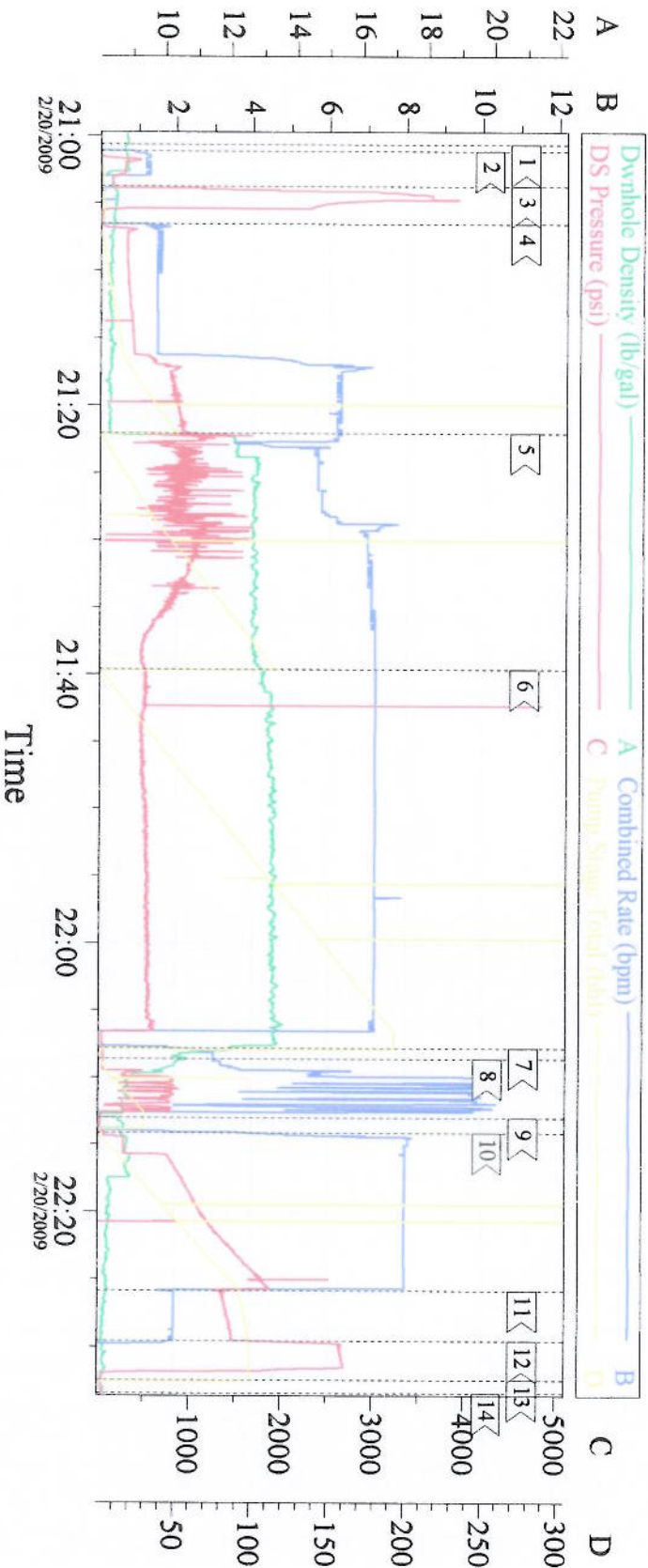
Cementing Job Log

Activity Description	Date/Time	Cht #	Rate bbl/min	Volume bbl		Pressure psig		Comments
				Stage	Total	Tubing	Casing	
Test Lines	02/20/2009 21:03		0.5	0.1			4000.0	
Pump Spacer 1	02/20/2009 21:06		6	50			865.0	Fresh Water, First 25 bbls with polyflake
Pump Lead Cement	02/20/2009 21:22		7	114			1133.0	400 sks of VARICEM @ 12.8# - 1.6 yield - 7.31 H2O requirement
Pump Tail Cement	02/20/2009 21:39		7	164.9			550.0	630 sks of VARICEM @ 13.2# - 1.47 yield - 6.32 H2O requirement
Shutdown	02/20/2009 22:07							
Clean Lines	02/20/2009 22:08							
Drop Top Plug	02/20/2009 22:13							
Pump Displacement	02/20/2009 22:14		8	101			1730.0	2% KCL Water
Slow Rate	02/20/2009 22:25		2	91			1470.0	
Bump Plug	02/20/2009 22:29		2	101			2650.0	Bumped plug @ calculated displacement an 1000 psi over
Check Floats	02/20/2009 22:32							Floats Held
End Job	02/20/2009 22:33							
Safety Meeting - Pre Rig-Down	02/20/2009 22:35							
Rig-Down Equipment	02/20/2009 23:45							
Rig-Down Completed	02/21/2009 00:30							
Safety Meeting - Departing Location	02/21/2009 00:45							
Depart Location for Service Center or Other Site	02/21/2009 01:00							

Total Depth = 6595 , Total Casing = 6568 , Shoe Joint = 47.90 , Mud Weight = 10.3# . Casing remained stationary throughout job and was chained down. 5 bbls of cement returned to surface. 315.5 bbls of H2O were used for the job and 60 bbls were used for clean up (before dropping plug and after the job) The plug landed at calculated displacement and the floats held.

Thank you for using Grand Junction Halliburton Dean Daniel & Crew

4 1/2 LONG STRING H&P 316



1 <	Start Job	21:00:40	2 <	Prime Lines	21:01:08	3 <	Test Lines	21:03:43
4 <	Pump Spacer 1	21:06:30	5 <	Pump Lead Cement	21:22:01	6 <	Pump Tail Cement	21:39:36
7 <	Shut Down	22:07:49	8 <	Clean Lines	22:08:39	9 <	Drop Top Plug	22:13:03
10 <	Pump Displacement	22:14:09	11 <	Slow Rate	22:25:49	12 <	Bump Plug	22:29:35
13 <	Check Floats	22:32:26	14 <	End Job	22:33:26			

Customer: Chevron	Job Date: 2/20/2008	Ticket #: 6513332
Well Number: SKR 598-36-BV-21	Co. Rep: Chad Kaverder	ADC Used: YES
Supervisor: Dean Daniel	HES Unit: Elite 4	Operator: Steven Borszich

CemWin v1.7.2
20-Feb-09 22:45