

**CHEVRON - MID-CONTINENT EBIZ
11111 S WILCREST DR - DO NOT MAIL
HOUSTON, Texas**

SKR
SKR 598-36-BV-20

H&P 316/H&P/316

Post Job Summary

Cement Production Casing

Prepared for: ED DOHERTY
Date Prepared: 3/19/09
Version: 1

Service Supervisor: CARTER, ERIC

Submitted by:

HALLIBURTON

The Road to Excellence Starts with Safety

The Road to Excellence Starts with Safety

Sold To #: 338668	Ship To #: 2695501	Quote #:	Sales Order #: 6566414
Customer: CHEVRON - MID-CONTINENT EBIZ		Customer Rep: Doherty, Ed	
Well Name: SKR	Well #: 598-36-BV-20	API/UWI #:	
Field: SKINNER RIDGE	City (SAP): PARACHUTE	County/Parish: Garfield	State: Colorado
Contractor: H&P 316	Rig/Platform Name/Num: H&P 316		
Job Purpose: Cement Production Casing			
Well Type: Development Well	Job Type: Cement Production Casing		
Sales Person: DUNNING, DUSTIN	Srvc Supervisor: CARTER, ERIC	MBU ID Emp #: 345598	

Job Personnel

HES Emp Name	Exp Hrs	Emp #	HES Emp Name	Exp Hrs	Emp #	HES Emp Name	Exp Hrs	Emp #
BLAKE, TIMOTHY Kenn	7.5	459313	BROST, ROBERT W	7.5	394382	BROWN, TRAVIS A	7.5	396848
CARTER, ERIC Earl	7.5	345598	HAMMOND, ANSON Perry	7.5	421370	KUKUS, CHRISTOPHER A	7.5	413952
LANE, R Michael	7.5	445002	WILKE, ANDREW	7.5	398822			

Equipment

HES Unit #	Distance-1 way	HES Unit #	Distance-1 way	HES Unit #	Distance-1 way	HES Unit #	Distance-1 way
10025121	60 mile	10243540C	60 mile	10296148C	60 mile	10710872	60 mile
10719775	60 mile	10829469	60 mile	10988978	60 mile		

Job Hours

Date	On Location Hours	Operating Hours	Date	On Location Hours	Operating Hours	Date	On Location Hours	Operating Hours
3/19/09	7.5	3.5						

TOTAL	Total is the sum of each column separately							
-------	--	--	--	--	--	--	--	--

Job

Formation Name				Job Times						
Formation Depth (MD)		Top	0	Bottom	6540 FT.	Date	Time	Time Zone		
Form Type		BHST				On Location	19 - Mar - 2009	11:00	MST	
Job depth MD		6513. ft		Job Depth TVD		6513. ft	Job Started	19 - Mar - 2009	19:05	MST
Water Depth				Wk Ht Above Floor		5. ft	Job Completed	19 - Mar - 2009	20:37	MST
Perforation Depth (MD)		From		To		Departed Loc	19 - Mar - 2009	22:30	MST	

Well Data

Description	New / Used	Max pressure psig	Size in	ID in	Weight lbm/ft	Thread	Grade	Top MD ft	Bottom MD ft	Top TVD ft	Bottom TVD ft
7 7/8 Open Hole Section				7.875				1034.	6500.		
4 1/2 Production Casing	Unknown		4.5	4.	11.6				6500.		
8 5/8 Surface Casing	Unknown		8.625	8.097	24.				6500.		

Sales/Rental/3rd Party (HES)

Description	Qty	Qty uom	Depth	Supplier
PLUG,CMTG,TOP,4 1/2,HWE,3.65 MIN/4.14 MA	1	EA		
PORT. DAS W/CEMWIN;ACQUIRE W/HES, ZI	1	JOB		
ADC (AUTO DENSITY CTRL) SYS, /JOB,ZI	1	JOB		

Tools and Accessories

Type	Size	Qty	Make	Depth	Type	Size	Qty	Make	Depth	Type	Size	Qty	Make
Guide Shoe					Packer					Top Plug	4.5"	1	
Float Shoe					Bridge Plug					Bottom Plug			
Float Collar					Retainer					SSR plug set			
Insert Float										Plug Container	4.5"	1	
Stage Tool										Centralizers			

Cementing Job Summary

Miscellaneous Materials											
Gelling Agt	Conc	Surfactant	Conc	Acid Type	Qty	Conc	%	Treatment Fld	Conc	Inhibitor	Conc
				Sand Type	Size	Qty					
Stage/Plug #: 1											
Fluid #	Stage Type	Fluid Name	Qty	Qty uom	Mixing Density lbm/gal	Yield ft ³ /sk	Mix Fluid Gal/sk	Rate bbl/min	Total Mix Fluid Gal/sk		
1	PolyFlake Spacer		25	bbl	8.33	.0	.0	4			
2	FRESH WATER Spacer		25	bbl	8.33	.0	.0	4			
3	Lead Cement	VARICEM (TM) CEMENT (452009)	390.0	sacks	12.8	1.61	7.31	6	7.7		
	7.704 Gal	FRESH WATER									
4	Tail Cement	EXTENDACEM (TM) SYSTEM (452981)	640.0	sacks	13.2	1.47	6.32	6	7.0		
5	KCL Displacement		100.30	bbl	8.45	.0	.0	8			
Calculated Values			Pressures			Volumes					
Displacement	100.3	Shut In: Instant		Lost Returns	NONE	Cement Slurry	278.7	Pad			
Top Of Cement		5 Min		Cement Returns	0	Actual Displacement	100.3	Treatment			
Frac Gradient		15 Min		Spacers	50	Load and Breakdown		Total Job	428.9		
Rates											
Circulating	RIG	Mixing	6	Displacement	8	Avg. Job	7				
Cement Left In Pipe	Amount	46.15 ft	Reason	Shoe Joint							
Frac Ring # 1 @	ID	Frac ring # 2 @	ID	Frac Ring # 3 @	ID	Frac Ring # 4 @	ID				
The Information Stated Herein Is Correct				Customer Representative Signature							

Cementing Job Log

The Road to Excellence Starts with Safety

Sold To #: 338668	Ship To #: 2695501	Quote #:	Sales Order #: 6566414
Customer: CHEVRON - MID-CONTINENT EBIZ		Customer Rep: Doherty, Ed	
Well Name: SKR	Well #: 598-36-BV-20	API/UWI #:	
Field: SKINNER RIDGE	City (SAP): PARACHUTE	County/Parish: Garfield	State: Colorado
Legal Description:			
Lat: N 0 deg. OR N 0 deg. 0 min. 0 secs.		Long: E 0 deg. OR E 0 deg. 0 min. 0 secs.	
Contractor: H&P 316	Rig/Platform Name/Num: H&P 316		
Job Purpose: Cement Production Casing		Ticket Amount:	
Well Type: Development Well	Job Type: Cement Production Casing		
Sales Person: DUNNING, DUSTIN	Srvc Supervisor: CARTER, ERIC	MBU ID Emp #: 345598	

Activity Description	Date/Time	Cht #	Rate bbl/min	Volume bbl		Pressure psig		Comments
				Stage	Total	Tubing	Casing	
Call Out	03/19/2009 11:00							
Depart Yard Safety Meeting	03/19/2009 13:20							ATTENDED BY ALL HES CREW, SAFETY PERSON WAS TRAVIS BROWN (FOLLOWING DISTANCES, LIGHTS, NO CELL PHONES, SEAT BELTS, KEEP CREW IN MIRRORS)
Crew Leave Yard	03/19/2009 13:30							
Arrive At Loc	03/19/2009 15:00							
Assessment Of Location Safety Meeting	03/19/2009 15:10							ATTENDED BY ALL HES CREW (TRENCHES, TRIP HAZARDS, WET SURFACES)
Other	03/19/2009 17:40							SPOT EQUIPMENT=1 ELITE, 1 660 BULK, 2 F350, 1 F450, 1 F150
Pre-Rig Up Safety Meeting	03/19/2009 17:50							ATTENDED BY ALL HES CREW AND COMPANY REP (TRENCHES, TRIP HAZARDS, PINCH POINTS, OVERHEAD LOADS, LINE OF FIRE, WET SURFACES, LIFTING, 3 POINT CONTACT, TAG LINES)
Rig-Up Equipment	03/19/2009 18:00							

Cementing Job Log

Activity Description	Date/Time	Cht #	Rate bbl/ min	Volume bbl		Pressure psig		Comments
				Stage	Total	Tubing	Casing	
Pre-Job Safety Meeting	03/19/2009 18:30							ATTENDED BY ALL HES CREW RIG CREW AND COMPANY REP (TRENCHES, TRIP HAZARDS, PINCH POINTS, OVERHEAD LOADS, LINE OF FIRE, WET SURFACES, LIFTING, 3 POINT CONTACT, TAG LINES)
Start Job	03/19/2009 19:05							TP 6513', TD 6540', SJ 42.15', FC 6466.85', MW 10.4 PPG, CASING 4.5", 11.6 #, N-80, HOLE 7.875", SURFACE CASING SET AT 1034', 8.625", 24 #
Test Lines	03/19/2009 19:09		2	2				PRESSURED UP TO 3900 PSI, PRESSURE HELD
Pump Spacer 1	03/19/2009 19:10		4	25			467.0	FRESH WATER W/POLY FLAKE
Pump Spacer 2	03/19/2009 19:17		4	25			585.0	FRESH WATER
Pump Lead Cement	03/19/2009 19:24		6	111.1			1063. 0	390 SKS MIXED AT 12.8 PPG, 1.6 YIELD, 7.31 GL/SK=111.1 BBLs
Pump Tail Cement	03/19/2009 19:43		6	167.6			530.0	640 SKS MIXED AT 13.2 PPG, 1.47 YIELD, 6.32 GL/SK=167.6 BBLs
Shutdown	03/19/2009 20:10							
Clean Lines	03/19/2009 20:12							CLEANED LINES TO PIT
Drop Top Plug	03/19/2009 20:18							DRILLER VERIFIED PLUG LAUNCHED
Pump Displacement	03/19/2009 20:19		8	90.3			1700. 0	FRESH WATER W/KCL
Slow Rate	03/19/2009 20:31		2	10			1500. 0	
Bump Plug	03/19/2009 20:35		2	100.3			2550. 0	PLUG LANDED
Check Floats	03/19/2009 20:36							FLOATS HELD

Sold To # : 338668

Ship To # : 2695501

Quote # :

Sales Order # : 6566414

SUMMIT Version: 7.20.130

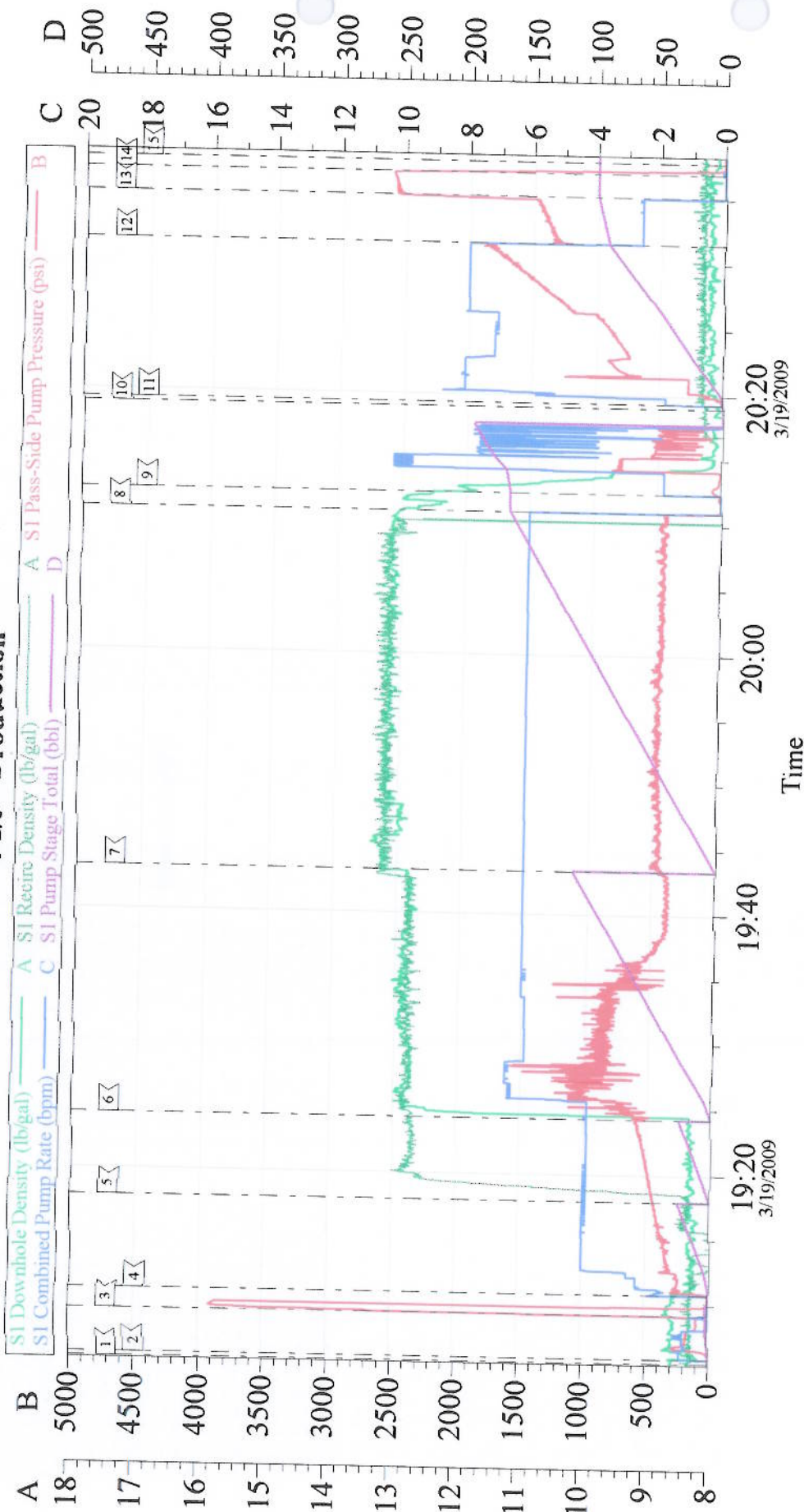
Thursday, March 19, 2009 09:30:00

Cementing Job Log

Activity Description	Date/Time	Cht #	Rate bbl/ min	Volume bbl		Pressure psig		Comments
				Stage	Total	Tubing	Casing	
End Job	03/19/2009 20:37							PIPE WAS NOT MOVED DURING JOB, GOOD CIRCULATION THROUGH OUT JOB, NO CEMENT TO SURFACE.
Post-Job Safety Meeting (Pre Rig-Down)	03/19/2009 20:50							ATTENDED BY ALL HES CREW AND COMPANY REP (TRENCHES, TRIP HAZARDS, PINCH POINTS, OVERHEAD LOADS, LINE OF FIRE, WET SURFACES, LIFTING, 3 POINT CONTACT, TAG LINES)
Rig-Down Equipment	03/19/2009 21:00							
Depart Location Safety Meeting	03/19/2009 22:20							ATTENDED BY ALL HES CREW (FOLLOWING DISTANCES, LIGHTS, NO CELL PHONES, SEAT BELTS, KEEP CREW IN MIRRORS)
Crew Leave Location	03/19/2009 22:30							THANK YOU FOR USING HALLIBURTON CEMENT, ERIC CARTER AND CREW.

Chevron

4 1/2" Production



Local Event Log			
1 START JOB	19:05:32	2 PRIME LINES	19:05:52
4 PUMP DYED SPACER	19:10:44	3 TEST LINES	19:09:13
7 PUMP TAIL CEMENT	19:43:18	6 PUMP LEAD CEMENT	19:24:15
10 DROP TOP PLUG	20:18:59	9 WASH PUMPS & LINES	20:12:23
13 LAND PLUG	20:35:05	12 SLOW RATE	20:31:31
		15 END JOB	20:37:47

Customer: CHEVRON - MID-CONTINENT	Job Date: 19-Mar-2009	Sales Order #: 6566414
Well Description: Skinner Ridge 598-36-BV-20	Job Type: Production	ADC Used: Yes
Company Rep: Jordan Haug	Cement Supervisor: Eric Carter	Elite #/Operator: #1/Chris Kukus