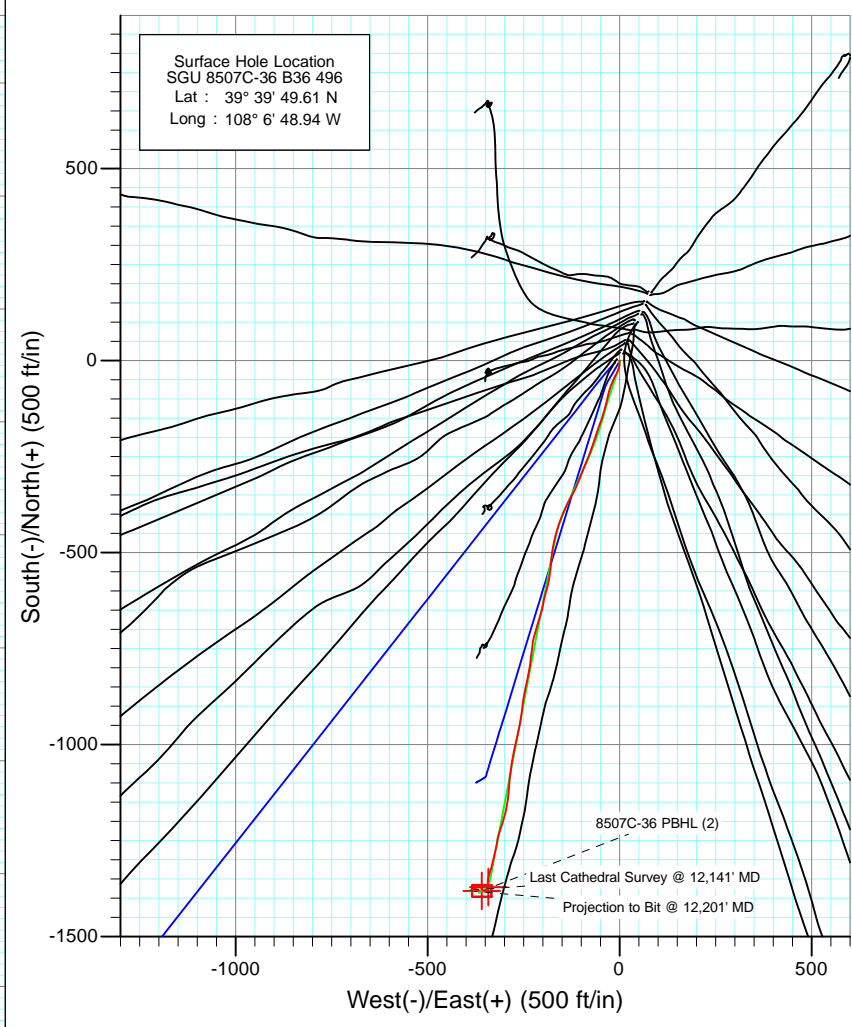
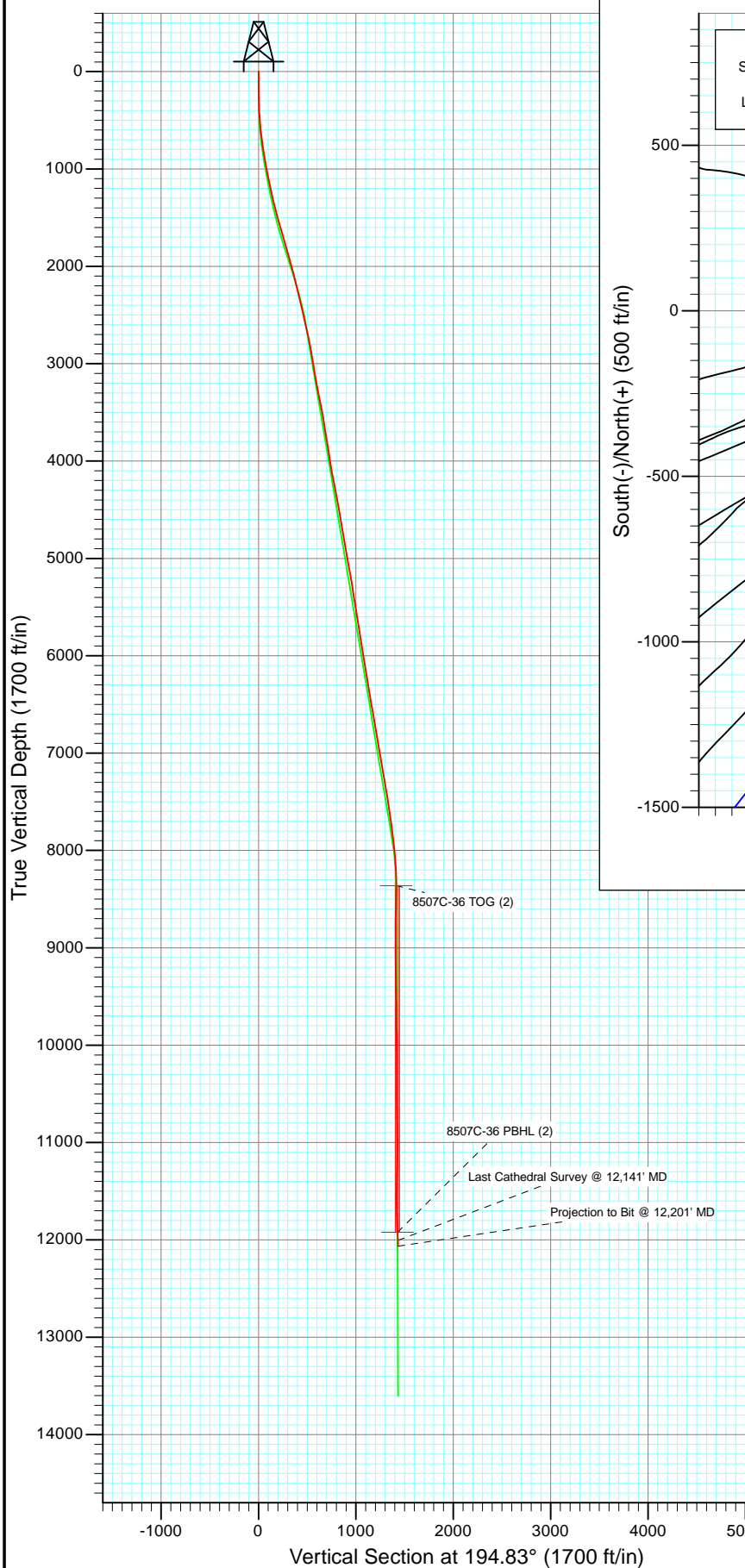




Project: Story Gulch
 Site: S36-T4S-R96W (B36 496)
 Well: SGU 8507C-36 B36 496
 Wellbore: DD
 Design: FINAL



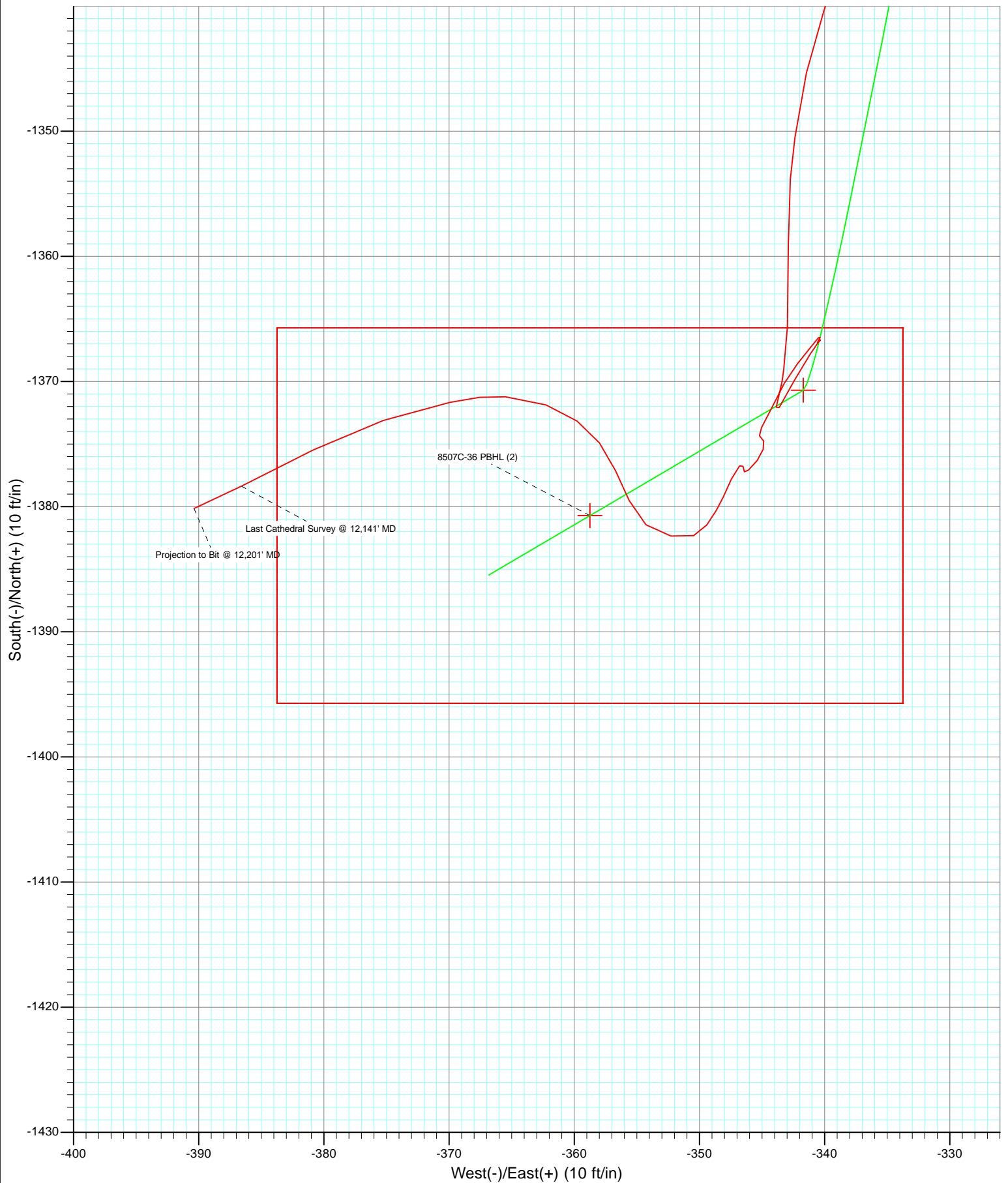
Azimuths to True North
 Magnetic North: 10.43°

Magnetic Field
 Strength: 52312.1nT
 Dip Angle: 65.86°
 Date: 5/27/2011
 Model: IGRF2010

DD SGU 8507C-36 B36 496 105538(SH), 115219 (MH); LR							
WELL @ 8374.0ft (Patterson 308) North American Datum 1983 Well SGU 8507C-36 B36 496, True North							
Type	Target	Azimuth	Origin	Type	N/S	E/W	From TVD
User	No Target (Freehand)	194.83	Slot		0.0	0.0	0.0
Name	TVD	+N/-S	+E/-W	Latitude	Longitude		
Interp Point	1504.8		-50.4		108° 6' 49.59 W		
8507C-36 TOG (2)	8362.0	-1370.7	-341.7	39° 39' 36.06 N	108° 6' 53.31 W		
8507C-36 PBHL (2)	11922.0	-1380.7	-358.7	39° 39' 35.96 N	108° 6' 53.53 W		



Project: Story Gulch
Site: S36-T4S-R96W (B36 496)
Well: SGU 8507C-36 B36 496
Wellbore: DD
Design: FINAL



Cathedral Energy Services

Survey Report

Company:	EnCana Oil & Gas (USA) Inc	Local Co-ordinate Reference:	Well SGU 8507C-36 B36 496
Project:	Story Gulch	TVD Reference:	WELL @ 8374.0ft (Patterson 308)
Site:	S36-T4S-R96W (B36 496)	MD Reference:	WELL @ 8374.0ft (Patterson 308)
Well:	SGU 8507C-36 B36 496	North Reference:	True
Wellbore:	DD	Survey Calculation Method:	Minimum Curvature
Design:	DD	Database:	USA EDM 5000 Multi Users DB

Project	Story Gulch		
Map System:	US State Plane 1983	System Datum:	Mean Sea Level
Geo Datum:	North American Datum 1983		
Map Zone:	Colorado Central Zone		

Site		S36-T4S-R96W (B36 496)			
Site Position:		Northing:	1,677,422.27 ft	Latitude:	39° 39' 51.36 N
From:	Lat/Long	Easting:	2,264,394.80 ft	Longitude:	108° 6' 47.88 W
Position Uncertainty:	0.0 ft	Slot Radius:	13.200 in	Grid Convergence:	-1.65 °

Well	SGU 8507C-36 B36 496					
Well Position	+N/-S	0.0 ft	Northing:	1,677,247.22 ft	Latitude:	39° 39' 49.61 N
	+E/-W	0.0 ft	Easting:	2,264,306.42 ft	Longitude:	108° 6' 48.94 W
Position Uncertainty		0.0 ft	Wellhead Elevation:	ft	Ground Level:	8,352.0 ft

Wellbore	DD				
Magnetics	Model Name	Sample Date	Declination (°)	Dip Angle (°)	Field Strength (nT)
	IGRF2010	5/27/2011	10.43	65.86	52,312

Design	DD				
Audit Notes:					
Version:	1.0	Phase:	ACTUAL	Tie On Depth:	0.0
Vertical Section:	Depth From (TVD)	+N/-S	+E/-W	Direction	
	(ft)	(ft)	(ft)	(°)	
	0.0	0.0	0.0	194.83	

Survey Program	Date	6/6/2011			
From (ft)	To (ft)	Survey (Wellbore)	Tool Name	Description	
169.0	12,201.0	Survey #1 (DD)	MWD	Geolink MWD	

Survey										
Measured Depth (ft)	Inclination (°)	Azimuth (°)	Vertical Depth (ft)	+N/-S (ft)	+E/-W (ft)	Vertical Section (ft)	Dogleg Rate (°/100ft)	Build Rate (°/100ft)	Formations / Comments	
0.0	0.00	0.00	0.0	0.0	0.0	0.0	0.00	0.00		
169.0	0.70	190.20	169.0	-1.0	-0.2	1.0	0.41	0.41		
231.0	1.30	189.10	231.0	-2.1	-0.4	2.1	0.97	0.97		
261.0	1.20	180.10	261.0	-2.7	-0.4	2.7	0.73	-0.33		
292.0	1.50	189.60	292.0	-3.5	-0.5	3.5	1.20	0.97		
322.0	1.80	166.90	322.0	-4.3	-0.4	4.3	2.38	1.00		
353.0	1.90	181.00	352.9	-5.3	-0.3	5.2	1.50	0.32		
383.0	2.30	174.90	382.9	-6.4	-0.3	6.3	1.53	1.33		
414.0	3.20	172.80	413.9	-7.9	-0.1	7.6	2.92	2.90		
445.0	3.50	182.60	444.8	-9.7	-0.1	9.4	2.08	0.97		
475.0	4.30	185.70	474.8	-11.7	-0.2	11.4	2.76	2.67		
506.0	4.70	185.80	505.7	-14.1	-0.5	13.8	1.29	1.29		
538.0	4.90	190.10	537.6	-16.8	-0.8	16.4	1.29	0.62		

Cathedral Energy Services

Survey Report

Company:	EnCana Oil & Gas (USA) Inc	Local Co-ordinate Reference:	Well SGU 8507C-36 B36 496
Project:	Story Gulch	TVD Reference:	WELL @ 8374.0ft (Patterson 308)
Site:	S36-T4S-R96W (B36 496)	MD Reference:	WELL @ 8374.0ft (Patterson 308)
Well:	SGU 8507C-36 B36 496	North Reference:	True
Wellbore:	DD	Survey Calculation Method:	Minimum Curvature
Design:	DD	Database:	USA EDM 5000 Multi Users DB

Survey									
Measured Depth (ft)	Inclination (°)	Azimuth (°)	Vertical Depth (ft)	+N/-S (ft)	+E/-W (ft)	Vertical Section (ft)	Dogleg Rate (°/100ft)	Build Rate (°/100ft)	Formations / Comments
601.0	5.30	202.40	600.3	-22.1	-2.4	22.0	1.84	0.63	
696.0	7.30	207.40	694.7	-31.5	-6.9	32.2	2.18	2.11	
791.0	9.30	206.00	788.7	-43.8	-13.0	45.7	2.12	2.11	
886.0	10.00	203.50	882.4	-58.3	-19.7	61.3	0.86	0.74	
981.0	10.50	196.20	975.9	-74.1	-25.4	78.2	1.46	0.53	
1,076.0	11.60	193.50	1,069.1	-91.7	-30.0	96.4	1.28	1.16	
1,171.0	11.80	195.80	1,162.1	-110.4	-34.9	115.6	0.53	0.21	
1,266.0	12.50	193.20	1,255.0	-129.7	-39.9	135.6	0.94	0.74	
1,361.0	13.50	199.60	1,347.6	-150.2	-45.9	156.9	1.84	1.05	
1,456.0	14.50	200.50	1,439.8	-171.8	-53.8	179.8	1.08	1.05	
1,551.0	15.90	197.90	1,531.4	-195.3	-62.0	204.7	1.64	1.47	
1,646.0	16.80	197.80	1,622.6	-220.7	-70.2	231.4	0.95	0.95	
1,741.0	16.00	202.90	1,713.7	-245.9	-79.5	258.0	1.73	-0.84	
1,837.0	16.40	201.80	1,805.9	-270.6	-89.7	284.6	0.53	0.42	
1,932.0	15.80	200.50	1,897.2	-295.2	-99.2	310.8	0.74	-0.63	
2,027.0	15.60	202.90	1,988.6	-319.1	-108.7	336.3	0.72	-0.21	
2,122.0	15.10	207.90	2,080.3	-341.8	-119.4	361.0	1.49	-0.53	
2,217.0	13.20	208.00	2,172.4	-362.3	-130.3	383.6	2.00	-2.00	
2,312.0	13.10	205.40	2,264.9	-381.6	-140.0	404.7	0.63	-0.11	
2,407.0	13.80	202.10	2,357.3	-401.8	-148.9	426.6	1.09	0.74	
2,503.0	13.10	197.50	2,450.6	-422.8	-156.5	448.8	1.33	-0.73	
2,598.0	12.60	198.30	2,543.3	-442.9	-163.0	469.9	0.56	-0.53	
2,693.0	12.80	192.70	2,635.9	-463.0	-168.6	490.8	1.31	0.21	
2,789.0	12.10	189.80	2,729.7	-483.3	-172.6	511.4	0.98	-0.73	
2,884.0	10.90	188.90	2,822.8	-502.0	-175.7	530.3	1.28	-1.26	
2,995.0	9.60	184.90	2,932.0	-521.6	-178.1	549.8	1.33	-1.17	
3,078.0	8.90	183.70	3,013.9	-534.9	-179.1	562.9	0.87	-0.84	
3,169.0	10.00	188.00	3,103.7	-549.8	-180.7	577.7	1.44	1.21	
3,261.0	9.40	187.20	3,194.4	-565.1	-182.7	593.1	0.67	-0.65	
3,353.0	12.00	194.90	3,284.8	-581.8	-186.1	610.1	3.22	2.83	
3,444.0	11.30	194.20	3,373.9	-599.6	-190.7	628.5	0.78	-0.77	
3,536.0	10.80	193.90	3,464.2	-616.7	-195.0	646.1	0.55	-0.54	
3,628.0	10.20	192.40	3,554.7	-633.0	-198.8	662.8	0.72	-0.65	
3,719.0	8.70	191.90	3,644.4	-647.6	-202.0	677.8	1.65	-1.65	
3,811.0	10.10	196.70	3,735.2	-662.2	-205.7	692.8	1.74	1.52	
3,902.0	9.40	197.60	3,824.9	-676.9	-210.3	708.2	0.79	-0.77	
3,994.0	7.70	197.70	3,915.8	-689.9	-214.4	721.8	1.85	-1.85	
4,085.0	9.60	195.90	4,005.8	-703.0	-218.4	735.5	2.11	2.09	
4,177.0	9.10	196.00	4,096.6	-717.4	-222.5	750.5	0.54	-0.54	
4,269.0	12.00	187.20	4,187.0	-733.9	-225.7	767.2	3.60	3.15	
4,360.0	11.30	186.90	4,276.1	-752.1	-227.9	785.4	0.77	-0.77	
4,452.0	10.30	187.90	4,366.5	-769.2	-230.1	802.5	1.11	-1.09	
4,543.0	9.40	187.00	4,456.2	-784.7	-232.2	818.0	1.00	-0.99	
4,635.0	10.70	189.00	4,546.8	-800.6	-234.4	833.9	1.46	1.41	
4,726.0	9.70	191.90	4,636.3	-816.4	-237.3	850.0	1.24	-1.10	
4,817.0	8.60	193.10	4,726.2	-830.5	-240.4	864.4	1.23	-1.21	
4,909.0	11.00	189.50	4,816.8	-845.9	-243.4	880.0	2.69	2.61	
5,001.0	10.10	191.30	4,907.3	-862.5	-246.5	896.8	1.04	-0.98	
5,093.0	8.90	193.70	4,998.0	-877.3	-249.7	912.0	1.37	-1.30	
5,184.0	11.20	185.70	5,087.6	-892.9	-252.3	927.8	2.95	2.53	
5,276.0	10.00	185.30	5,178.0	-909.8	-253.9	944.5	1.31	-1.30	
5,367.0	9.30	187.40	5,267.7	-924.9	-255.6	959.5	0.86	-0.77	
5,459.0	8.30	189.30	5,358.7	-938.9	-257.6	973.5	1.13	-1.09	

Cathedral Energy Services

Survey Report

Company:	EnCana Oil & Gas (USA) Inc	Local Co-ordinate Reference:	Well SGU 8507C-36 B36 496
Project:	Story Gulch	TVD Reference:	WELL @ 8374.0ft (Patterson 308)
Site:	S36-T4S-R96W (B36 496)	MD Reference:	WELL @ 8374.0ft (Patterson 308)
Well:	SGU 8507C-36 B36 496	North Reference:	True
Wellbore:	DD	Survey Calculation Method:	Minimum Curvature
Design:	DD	Database:	USA EDM 5000 Multi Users DB

Survey									
Measured Depth (ft)	Inclination (°)	Azimuth (°)	Vertical Depth (ft)	+N/-S (ft)	+E/-W (ft)	Vertical Section (ft)	Dogleg Rate (°/100ft)	Build Rate (°/100ft)	Formations / Comments
5,551.0	10.10	193.40	5,449.5	-953.3	-260.6	988.2	2.08	1.96	
5,643.0	9.30	192.80	5,540.2	-968.4	-264.1	1,003.7	0.88	-0.87	
5,735.0	8.30	195.10	5,631.1	-982.0	-267.5	1,017.8	1.15	-1.09	
5,826.0	9.70	189.40	5,720.9	-995.9	-270.4	1,032.0	1.82	1.54	
5,918.0	9.10	191.20	5,811.7	-1,010.7	-273.1	1,046.9	0.73	-0.65	
6,010.0	8.30	194.30	5,902.7	-1,024.3	-276.2	1,060.8	1.01	-0.87	
6,102.0	9.60	188.30	5,993.5	-1,038.3	-278.9	1,075.1	1.74	1.41	
6,193.0	9.10	186.70	6,083.3	-1,053.0	-280.8	1,089.8	0.62	-0.55	
6,285.0	8.50	189.80	6,174.2	-1,066.9	-282.8	1,103.7	0.83	-0.65	
6,377.0	11.20	187.10	6,264.9	-1,082.4	-285.1	1,119.4	2.98	2.93	
6,468.0	9.70	185.00	6,354.4	-1,098.9	-286.9	1,135.7	1.70	-1.65	
6,560.0	8.50	182.60	6,445.2	-1,113.4	-287.9	1,150.0	1.37	-1.30	
6,652.0	10.80	187.20	6,535.9	-1,128.7	-289.2	1,165.1	2.63	2.50	
6,743.0	9.40	187.10	6,625.5	-1,144.6	-291.2	1,181.0	1.54	-1.54	
6,835.0	8.50	188.40	6,716.4	-1,158.7	-293.1	1,195.2	1.00	-0.98	
6,926.0	11.50	195.40	6,806.0	-1,174.1	-296.5	1,210.9	3.55	3.30	
7,018.0	10.70	195.70	6,896.3	-1,191.2	-301.3	1,228.6	0.87	-0.87	
7,109.0	10.10	197.50	6,985.8	-1,206.9	-306.0	1,245.1	0.75	-0.66	
7,201.0	9.70	197.00	7,076.4	-1,222.0	-310.7	1,260.9	0.44	-0.43	
7,292.0	9.40	198.80	7,166.1	-1,236.4	-315.3	1,275.9	0.47	-0.33	
7,384.0	9.30	184.50	7,256.9	-1,250.9	-318.3	1,290.7	2.52	-0.11	
7,475.0	9.40	195.00	7,346.7	-1,265.4	-320.8	1,305.4	1.88	0.11	
7,567.0	8.80	193.50	7,437.6	-1,279.5	-324.4	1,320.0	0.70	-0.65	
7,659.0	8.60	191.90	7,528.5	-1,293.1	-327.5	1,333.9	0.34	-0.22	
7,750.0	8.00	193.70	7,618.5	-1,305.9	-330.4	1,347.0	0.72	-0.66	
7,841.0	7.90	193.20	7,708.7	-1,318.2	-333.3	1,359.6	0.13	-0.11	
7,933.0	7.30	198.20	7,799.9	-1,329.9	-336.6	1,371.7	0.97	-0.65	
8,025.0	6.50	198.70	7,891.2	-1,340.4	-340.1	1,382.8	0.87	-0.87	
8,116.0	6.70	187.30	7,981.6	-1,350.5	-342.4	1,393.2	1.45	0.22	
8,208.0	4.00	177.00	8,073.2	-1,359.0	-342.9	1,401.5	3.10	-2.93	
8,300.0	4.20	184.30	8,165.0	-1,365.6	-343.0	1,407.9	0.61	0.22	
8,391.0	1.30	189.00	8,255.8	-1,369.9	-343.4	1,412.2	3.19	-3.19	
8,483.0	1.40	196.30	8,347.8	-1,372.1	-343.9	1,414.4	0.22	0.11	
8,573.0	1.50	27.90	8,437.8	-1,372.1	-343.6	1,414.3	3.21	0.11	
8,665.0	1.50	30.40	8,529.8	-1,370.0	-342.4	1,412.0	0.07	0.00	
8,757.0	1.60	31.90	8,621.7	-1,367.8	-341.2	1,409.6	0.12	0.11	
8,848.0	0.20	53.70	8,712.7	-1,366.7	-340.4	1,408.3	1.56	-1.54	
8,940.0	0.20	218.90	8,804.7	-1,366.7	-340.3	1,408.3	0.43	0.00	
9,031.0	0.20	238.40	8,895.7	-1,366.9	-340.6	1,408.5	0.07	0.00	
9,123.0	0.20	53.50	8,987.7	-1,366.9	-340.6	1,408.5	0.43	0.00	
9,215.0	0.40	15.30	9,079.7	-1,366.5	-340.4	1,408.1	0.30	0.22	
9,301.0	0.50	215.00	9,165.7	-1,366.5	-340.5	1,408.1	1.03	0.12	
9,393.0	0.80	221.80	9,257.7	-1,367.3	-341.2	1,409.1	0.34	0.33	
9,485.0	1.20	216.50	9,349.7	-1,368.6	-342.2	1,410.6	0.45	0.43	
9,576.0	1.20	211.60	9,440.7	-1,370.1	-343.2	1,412.4	0.11	0.00	
9,668.0	1.50	203.10	9,532.7	-1,372.1	-344.2	1,414.5	0.39	0.33	
9,759.0	0.80	215.40	9,623.6	-1,373.7	-345.0	1,416.2	0.81	-0.77	
9,851.0	0.30	121.60	9,715.6	-1,374.3	-345.2	1,416.9	0.95	-0.54	
9,943.0	0.40	157.40	9,807.6	-1,374.8	-344.9	1,417.2	0.26	0.11	
10,034.0	0.50	202.10	9,898.6	-1,375.4	-344.9	1,417.9	0.39	0.11	
10,126.0	0.80	212.10	9,990.6	-1,376.3	-345.4	1,418.9	0.35	0.33	
10,218.0	0.50	239.00	10,082.6	-1,377.1	-346.1	1,419.8	0.46	-0.33	
10,309.0	0.10	9.40	10,173.6	-1,377.2	-346.4	1,420.0	0.63	-0.44	

Cathedral Energy Services

Survey Report

Company:	EnCana Oil & Gas (USA) Inc	Local Co-ordinate Reference:	Well SGU 8507C-36 B36 496
Project:	Story Gulch	TVD Reference:	WELL @ 8374.0ft (Patterson 308)
Site:	S36-T4S-R96W (B36 496)	MD Reference:	WELL @ 8374.0ft (Patterson 308)
Well:	SGU 8507C-36 B36 496	North Reference:	True
Wellbore:	DD	Survey Calculation Method:	Minimum Curvature
Design:	DD	Database:	USA EDM 5000 Multi Users DB

Survey									
Measured Depth (ft)	Inclination (°)	Azimuth (°)	Vertical Depth (ft)	+N/-S (ft)	+E/-W (ft)	Vertical Section (ft)	Dogleg Rate (°/100ft)	Build Rate (°/100ft)	Formations / Comments
10,401.0	0.10	321.70	10,265.6	-1,377.1	-346.4	1,419.9	0.09	0.00	
10,492.0	0.30	352.20	10,356.6	-1,376.8	-346.5	1,419.6	0.24	0.22	
10,584.0	0.40	227.80	10,448.6	-1,376.7	-346.8	1,419.7	0.67	0.11	
10,675.0	1.20	206.10	10,539.6	-1,377.8	-347.5	1,420.9	0.92	0.88	
10,767.0	0.80	201.80	10,631.6	-1,379.3	-348.1	1,422.4	0.44	-0.43	
10,859.0	0.70	215.00	10,723.6	-1,380.3	-348.7	1,423.6	0.22	-0.11	
10,950.0	1.00	212.30	10,814.6	-1,381.5	-349.4	1,424.9	0.33	0.33	
11,042.0	0.80	254.50	10,906.6	-1,382.3	-350.5	1,426.0	0.73	-0.22	
11,134.0	1.50	276.70	10,998.5	-1,382.3	-352.3	1,426.5	0.89	0.76	
11,225.0	1.40	313.00	11,089.5	-1,381.4	-354.3	1,426.1	1.00	-0.11	
11,317.0	1.60	336.40	11,181.5	-1,379.5	-355.6	1,424.6	0.69	0.22	
11,408.0	1.70	334.20	11,272.4	-1,377.1	-356.7	1,422.6	0.13	0.11	
11,500.0	1.50	325.40	11,364.4	-1,374.9	-358.0	1,420.7	0.34	-0.22	
11,591.0	1.70	304.30	11,455.4	-1,373.2	-359.8	1,419.5	0.68	0.22	
11,683.0	1.80	291.10	11,547.3	-1,371.9	-362.3	1,418.9	0.45	0.11	
11,774.0	2.40	274.00	11,638.3	-1,371.2	-365.5	1,419.1	0.95	0.66	
11,866.0	3.20	257.10	11,730.2	-1,371.7	-369.9	1,420.7	1.24	0.87	
11,958.0	3.70	252.80	11,822.0	-1,373.1	-375.3	1,423.4	0.61	0.54	
12,049.0	4.00	241.90	11,912.8	-1,375.5	-380.9	1,427.1	0.87	0.33	
12,141.0	4.00	244.70	12,004.6	-1,378.4	-386.6	1,431.4	0.21	0.00	Last Cathedral Survey @ 12,141' MD
12,201.0	4.00	244.70	12,064.4	-1,380.1	-390.4	1,434.1	0.00	0.00	Projection to Bit @ 12,201' MD

Cathedral Energy Services

Survey Report

Company:	EnCana Oil & Gas (USA) Inc	Local Co-ordinate Reference:	Well SGU 8507C-36 B36 496
Project:	Story Gulch	TVD Reference:	WELL @ 8374.0ft (Patterson 308)
Site:	S36-T4S-R96W (B36 496)	MD Reference:	WELL @ 8374.0ft (Patterson 308)
Well:	SGU 8507C-36 B36 496	North Reference:	True
Wellbore:	DD	Survey Calculation Method:	Minimum Curvature
Design:	DD	Database:	USA EDM 5000 Multi Users DB

Targets									
Target Name									
- hit/miss target	Dip Angle	Dip Dir.	TVD	+N/-S	+E/-W	Northing	Easting	Latitude	Longitude
- Shape	(°)	(°)	(ft)	(ft)	(ft)	(ft)	(ft)		
8507C-36 TOG	0.00	0.00	8,358.0	-1,370.7	-341.7	1,675,886.93	2,263,925.43	39° 39' 36.06 N	108° 6' 53.31 W
- actual wellpath misses target center by 2.7ft at 8493.2ft MD (8358.0 TVD, -1372.3 N, -343.9 E)									
- Point									
Interp Point	0.00	0.00	1,504.8	-171.9	-50.4	1,677,076.89	2,264,251.10	39° 39' 47.91 N	108° 6' 49.59 W
- actual wellpath misses target center by 18.1ft at 1518.5ft MD (1500.1 TVD, -187.0 N, -59.2 E)									
- Point									
8507C-36 PBHL (2)	0.00	0.00	11,922.0	-1,380.7	-358.7	1,675,877.40	2,263,908.11	39° 39' 35.96 N	108° 6' 53.53 W
- actual wellpath misses target center by 23.2ft at 12057.0ft MD (11920.7 TVD, -1375.7 N, -381.3 E)									
- Rectangle (sides W30.0 H50.0 D0.0)									
8507C-36 TOG (2)	0.00	0.00	8,362.0	-1,370.7	-341.7	1,675,886.93	2,263,925.43	39° 39' 36.06 N	108° 6' 53.31 W
- actual wellpath misses target center by 2.8ft at 8497.2ft MD (8362.0 TVD, -1372.3 N, -343.9 E)									
- Point									
8507C-36 PBHL	0.00	0.00	11,918.0	-1,380.7	-358.7	1,675,877.40	2,263,908.11	39° 39' 35.96 N	108° 6' 53.53 W
- actual wellpath misses target center by 23.0ft at 12053.0ft MD (11916.8 TVD, -1375.6 N, -381.1 E)									
- Rectangle (sides W30.0 H50.0 D0.0)									

Design Annotations				
Measured Depth	Vertical Depth	Local Coordinates		Comment
(ft)	(ft)	+N/-S (ft)	+E/-W (ft)	
12,141.0	12,004.6	-1,378.4	-386.6	Last Cathedral Survey @ 12,141' MD
12,201.0	12,064.4	-1,380.1	-390.4	Projection to Bit @ 12,201' MD

Checked By: _____ Approved By: _____ Date: _____