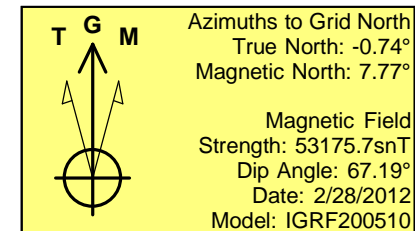
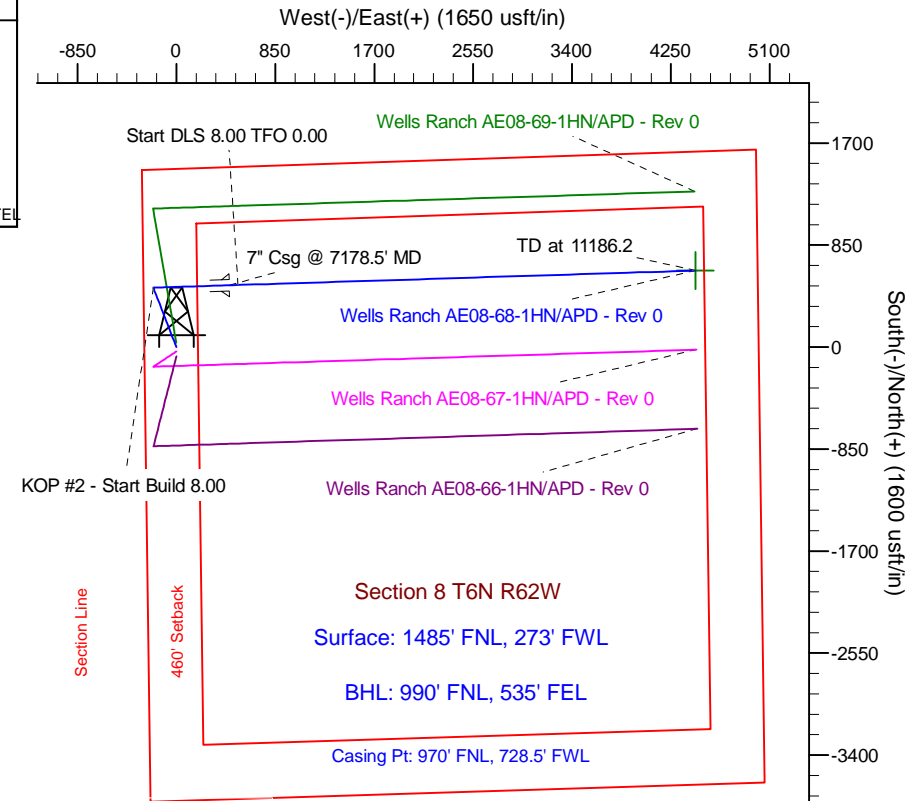
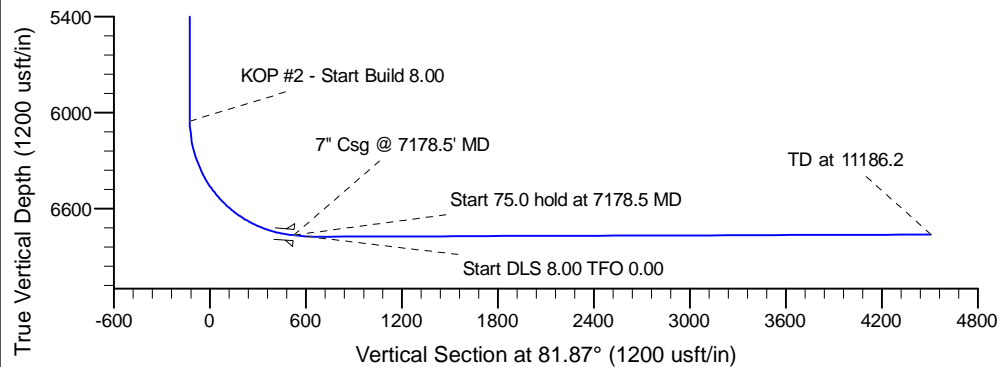
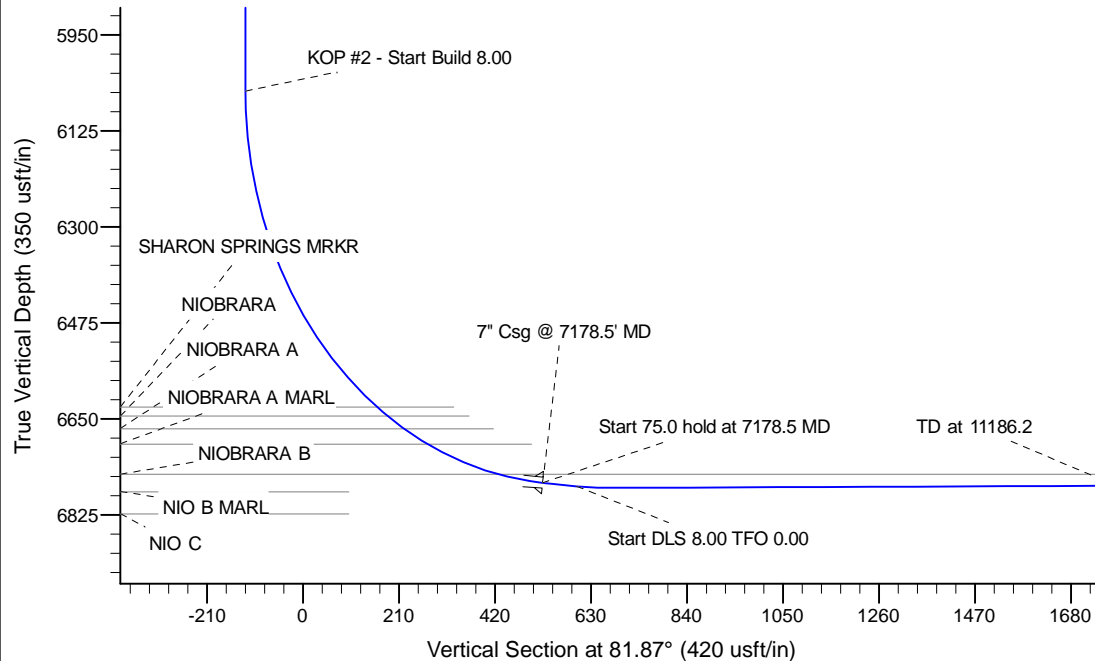


Project: Wattenberg Field  
 Site: AE (Sec.8-T06N-R62W) Weld County, CO  
 Well: Wells Ranch AE08-68-1HN  
 Wellbore: Original Drilling  
 Design: APD - Rev 0

# Northern Region Drilling

Geodetic System: US State Plane 1983  
 Datum: North American Datum 1983  
 Ellipsoid: GRS 1980  
 Zone: Colorado Northern Zone  
 System Datum: Mean Sea Level

SECTION DETAILS										
Sec	MD	Inc	Azi	TVD	+N/-S	+E/-W	Dleg	TFace	VSec	Target
1	0.0	0.00	0.00	0.0	0.0	0.0	0.00	0.00	0.0	
2	1800.0	0.00	0.00	1800.0	0.0	0.0	0.00	0.00	0.0	
3	2397.2	14.93	338.20	2390.5	71.8	-28.7	2.50	338.20	-18.3	
4	3865.8	14.93	338.20	3809.5	423.2	-169.3	0.00	0.00	-107.7	
5	4463.1	0.00	0.00	4400.0	495.0	-198.0	2.50	180.00	-126.0	
6	6116.0	0.00	0.00	6052.9	495.0	-198.0	0.00	0.00	-126.0	
7	7178.5	85.00	88.25	6766.4	515.0	455.5	8.00	88.25	523.7	
8	7253.5	85.00	88.25	6773.0	517.2	530.2	0.00	0.00	598.0	
9	7318.5	90.20	88.25	6775.7	519.2	595.0	8.00	0.00	662.5	
10	11186.2	90.20	88.25	6762.3	637.3	4461.0	0.00	0.00	4506.3	Wells Ranch AE08-68-1HN BHL 990'FNL, 535'FEL



WELL DETAILS: Wells Ranch AE08-68-1HN			
Ground Level: 4987.0			
Northing	Easting	Latitude	Longitude
1428634.68	3318408.51	40.504360	-104.354950
Plan: APD - Rev 0 (Wells Ranch AE08-68-1HN/Original Drilling)			
Created By: Carrie Willers		Date: 16:41, February 29 2012	
<b>OK to submit with 2A as per Noble Drilling</b>			
<b>3/1/2012 09:12</b>			