

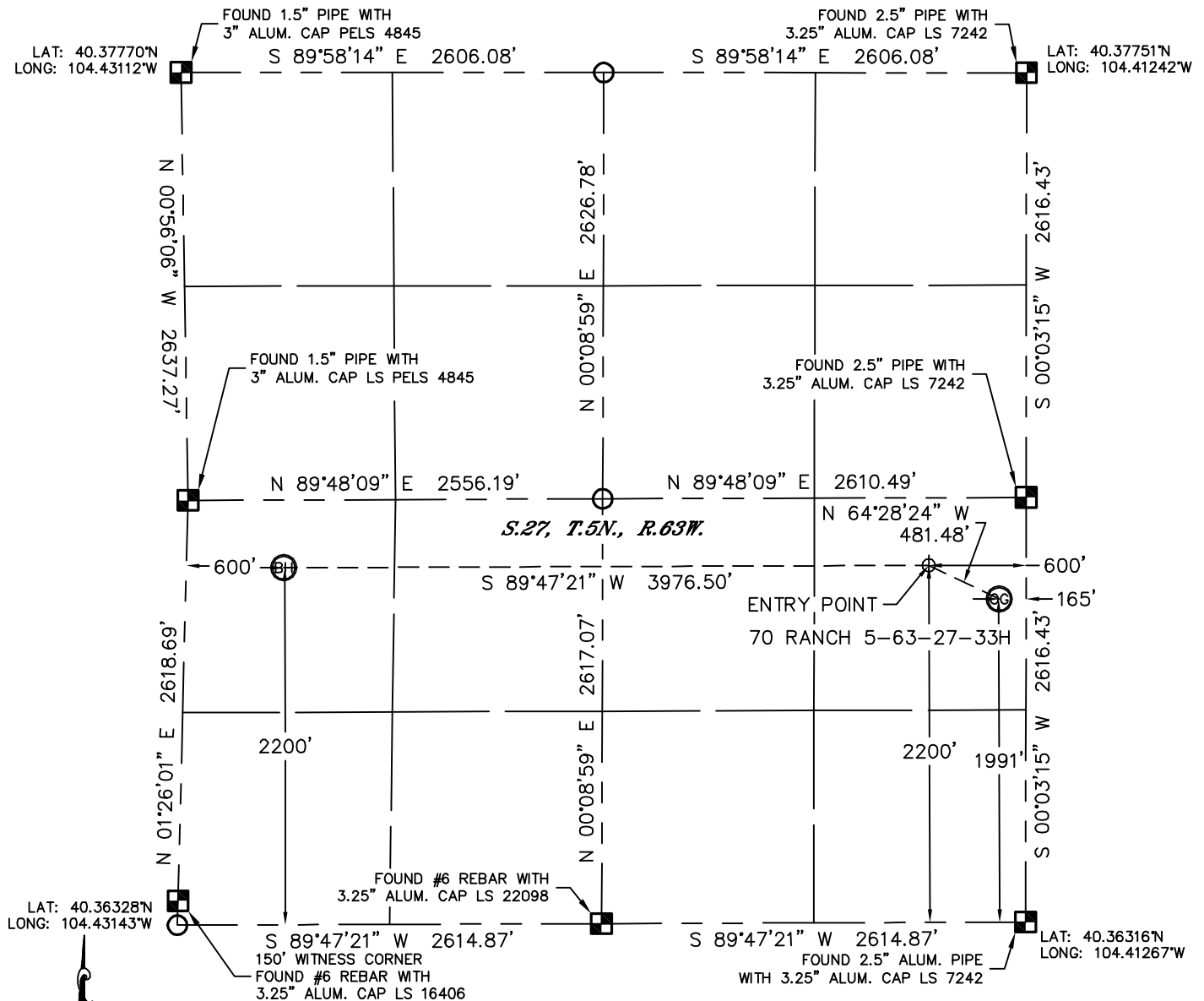


Lat40°, Inc. 1635 Foxtrail Drive, Suite 325 Loveland, CO 970-776-3321

# WELL LOCATION CERTIFICATE

THIS MAP DOES NOT REPRESENT A BOUNDARY SURVEY

SECTION: 27  
TOWNSHIP: 5N  
RANGE: 63W



In accordance with a request from Glenn Berglund with BILL BARRETT CORPORATION Lat40°, Inc. has determined the surface location of the 70 RANCH 5-63-27-33H to be 1991' from the SOUTH line and 165' from the EAST line and the bottom hole to be 2200' from the SOUTH line and 600' from the WEST line as measured at right angles from the section lines of Section 27, Township 5 North, Range 63 West of the Sixth Principal Meridian, County of Weld, State of Colorado.

I hereby state that this Well Location Certificate was prepared by me, or under my direct supervision, that the fieldwork was completed on 10/25/11, for and on behalf of BILL BARRETT CORPORATION. That this is not a Land Survey Plat or an Improvement Survey Plat, and that it is not to be relied upon for establishment of fence, building, or other future improvement lines.

## NOTE:

- 1) Bearings shown are Grid Bearings of the Colorado State Plane Coordinate System, North Zone, North American Datum 1983/2007. The lineal dimensions as contained herein are based upon the "U.S. Survey Foot."
- 2) Ground elevations are based on an observed GPS elevation (NAVD 1988 DATUM).
- 3) IMPROVEMENTS: See LOCATION DRAWING for all visible improvements within 400' of disturbed area.
- 4) SURFACE USE: RANGELAND
- 5) INSTRUMENT OPERATOR: ADAM KELLY

## NOTE

According to Colorado law, you must commence any legal action based upon any defect in this W.L.C. within three years after you discover such defect. In no event, may any action based upon any defect in this survey be commenced more than ten years after the date of the certificate shown hereon. (13-80-105 C.R.S.)

## LEGEND

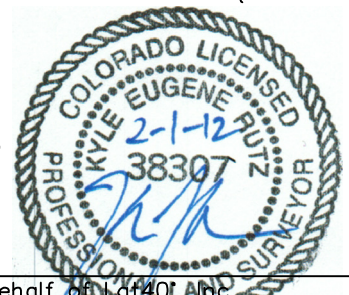
- = ALIQUOT MONUMENT AS DESCRIBED
- = CALCULATED POSITION

## SURFACE LOCATION

LATITUDE: 40.36862°N (40°22'07.0"N)  
LONGITUDE: 104.41317°W (104°24'47.4"W)  
PDOP: 2.6  
ELEV: 4595'  
1/4, 1/4: NE1/4SE1/4  
NEAREST PROPERTY LINE: 165' EAST  
BOTTOM HOLE  
LATITUDE: 40.36930°N (40°22'09.5"N)  
LONGITUDE: 104.42898°W (104°25'44.3"W)

## ENTRY POINT

LATITUDE: 40.36921°N (40°22'09.1"N)  
LONGITUDE: 104.41472°W (104°24'53.0"W)



Kyle E. Rutz—On behalf of Lat40°, Inc.  
Colorado Licensed Professional  
Land Surveyor No. 38307

REV. 2-1-2012  
PROJECT#: 2011312

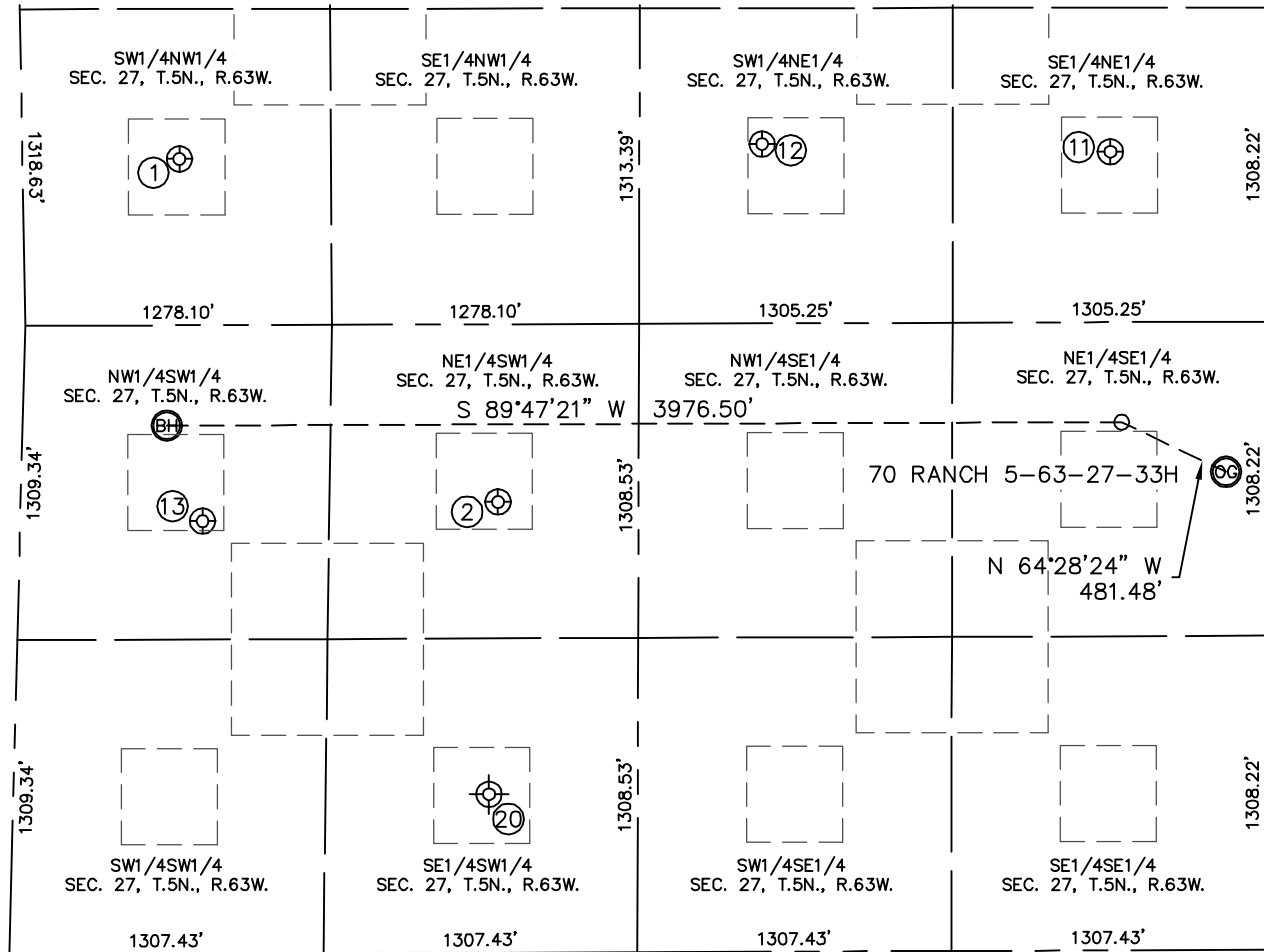


Lat40°, Inc. 1635 Foxtrail Drive, Suite 325 Loveland, CO 970-776-3321

# SITE SKETCH

70 RANCH 5-63-27-33H

SECTION: 27  
TOWNSHIP: 5N  
RANGE: 63W



①

PERKINS 12-27D  
SW1/4NW1/4  
1941' FNL  
654' FWL  
LAT-40.37234°N  
LONG-104.42875°W  
PDOP: 3.4  
ELEV: 4544'

②

70 RANCH 23-27  
NE1/4SW1/4  
1877' FSL  
1987' FWL  
LAT-40.36838°N  
LONG-104.42405°W  
PDOP: 2.1  
ELEV: 4544'

⑪

70 RANCH USX BB27-8  
SE1/4NE1/4  
1909' FNL  
648' FEL  
LAT-40.37230°N  
LONG-104.41484°W  
PDOP: 2.0  
ELEV: 4574'

⑫

70 RANCH 32-27  
SW1/4NE1/4  
1878' FNL  
2098' FEL  
LAT-40.37243°N  
LONG-104.42004°W  
PDOP: 4.5  
ELEV: 4585'

⑬

70 RANCH 13-27  
NW1/4SW1/4  
1802' FSL  
759' FWL  
LAT-40.36820°N  
LONG-104.42846°W  
PDOP: 1.4  
ELEV: 4539'

⑳

RONALD #1  
(Plugged and Abandoned)  
SE1/4SW1/4  
660' FSL (COGCC)  
1980' FWL (COGCC)  
LAT-40.36542°N (COGCC)  
LONG-104.42453°W (COGCC)  
PDOP: -  
ELEV: 4536' (COGCC)

