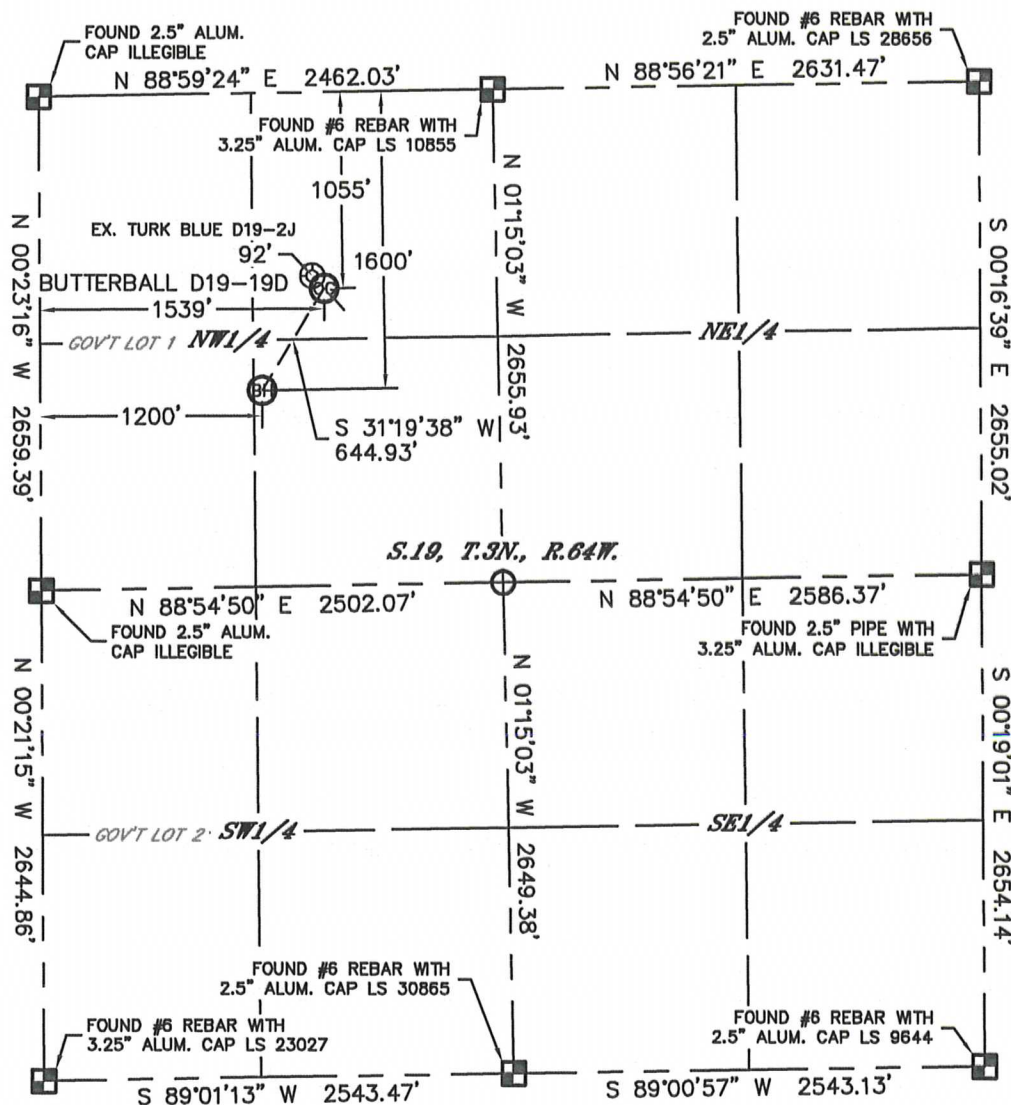


WELL LOCATION CERTIFICATE

THIS MAP DOES NOT REPRESENT A BOUNDARY SURVEY

SECTION: 19
TOWNSHIP: 3N
RANGE: 64W



In accordance with a request from Mike Rodine with Noble Energy Inc., Lat40°, Inc. has determined the surface location of the BUTTERBALL D19-19D to be 1055' from the NORTH line and 1539' from the WEST line and the bottom hole to be 1600' from the NORTH line and 1200' from the WEST line as measured at right angles from the section lines of Section 19, Township 3 North, Range 64 West of the Sixth Principal Meridian, County of Weld, State of Colorado.

I hereby state that this Well Location Certificate was prepared by me, or under my direct supervision, that the fieldwork was completed on 1/13/2012, for and on behalf of Noble Energy Inc. That this is not a Land Survey Plat or an Improvement Survey Plat, and that it is not to be relied upon for establishment of fence, building, or other future Improvement lines.

NOTE:

- 1) Bearings shown are Grid Bearings of the Colorado State Plane Coordinate System, North Zone, North American Datum 1983/2007. The lineal dimensions as contained herein are based upon the "U.S. Survey Foot."
- 2) Ground elevations are based on an observed GPS elevation (NAVD 1988 DATUM).
- 3) NEAREST EXISTING WELL: TURK BLUE D19-2J, 92'
- 4) IMPROVEMENTS: See LOCATION DRAWING for all visible improvements within 400' of disturbed area.
- 5) SURFACE USE: EX. WELL PAD / RANGELAND
- 6) INSTRUMENT OPERATOR: ADAM KELLY

NOTE

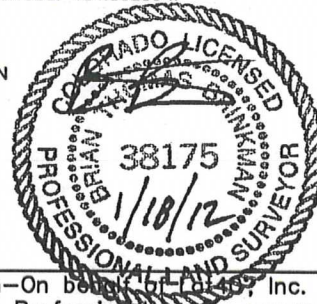
According to Colorado law, you must commence any legal action based upon any defect in this W.L.C. within three years after you discover such defect. In no event, may any action based upon any defect in this survey be commenced more than ten years after the date of the certificate shown hereon. (13-80-105 C.R.S.)

LEGEND

- = ALIQUOT MONUMENT AS DESCRIBED
- = CALCULATED POSITION

SURFACE LOCATION
LATITUDE: 40.21508°N
LONGITUDE: 104.59717°W
PDOP: 1.9
ELEV: 4790'
1/4,1/4: NE1/4NW1/4
NEAREST PROPERTY LINE: 1055' N

BOTTOM HOLE
LATITUDE: 40.21358°N
LONGITUDE: 104.59839°W



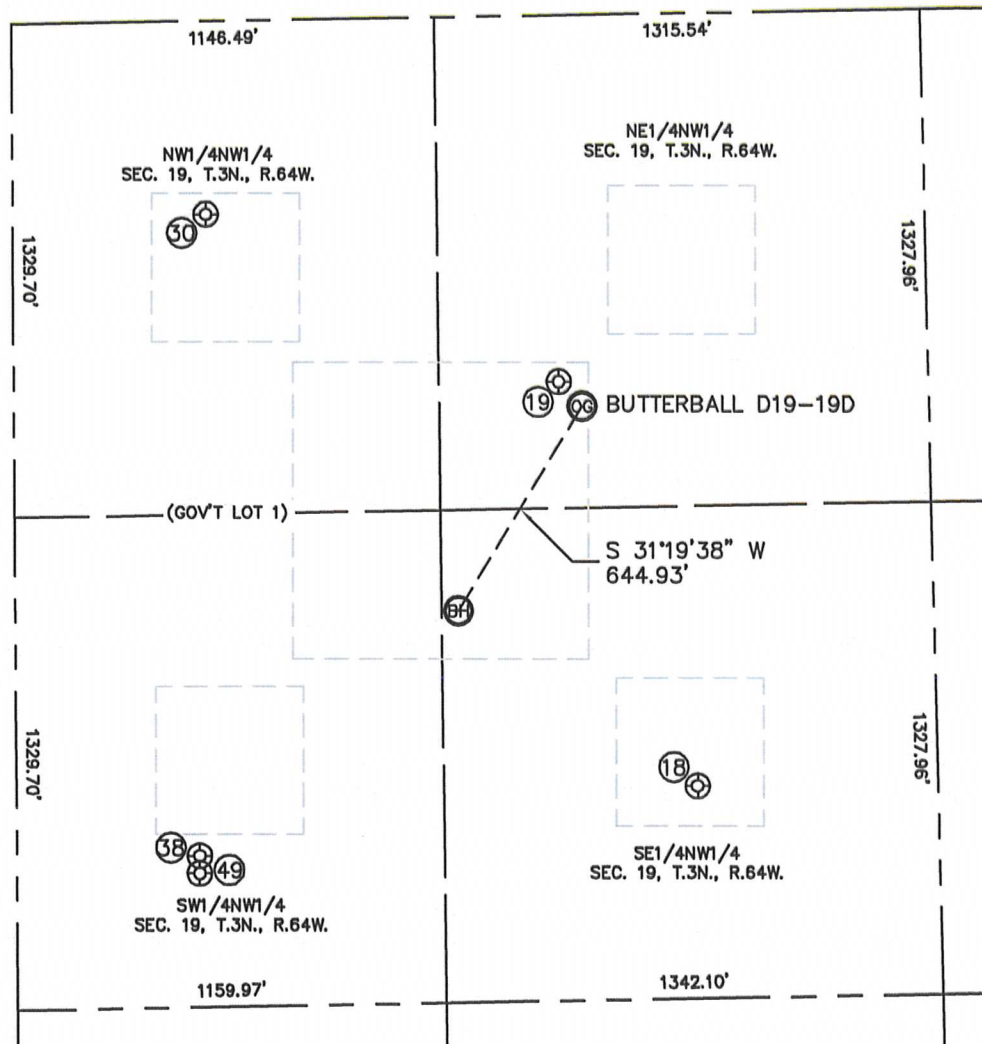
Brian T. Brinkman—On behalf of Lat40°, Inc.
Colorado Licensed Professional
Land Surveyor No. 38175

DATE: 1/18/2012
PROJECT#: 2010139

SITE SKETCH

BUTTERBALL D19-19D

SECTION: 19
TOWNSHIP: 3N
RANGE: 64W



⑮
TURK BLUE D19-6
SE1/4NW1/4
2083' FNL
1844' FWL
LAT-40.21227°N
LONG-104.59809°W
PDOP: 1.4
ELEV: 4775'

⑲
TURK BLUE D19-2J
NE1/4NW1/4
988' FNL
1476' FWL
LAT-40.21527°N
LONG-104.59740°W
PDOP: 1.8
ELEV: 4789'

③①
TURK BLUE D19-4
NW1/4NW1/4
520' FNL
523' FWL
LAT-40.21653°N
LONG-104.60080°W
PDOP: 2.1
ELEV: 4808'

③⑧
TURK BLUE D19-5
SW1/4NW1/4
2249' FNL
495' FWL
LAT-40.21179°N
LONG-104.60092°W
PDOP: 1.2
ELEV: 4789'

④⑨
BUTTERBALL D19-20D
SW1/4NW1/4
2297' FNL
495' FWL
LAT-40.21166°N
LONG-104.60092°W
PDOP: 3.6
ELEV: 4789'

