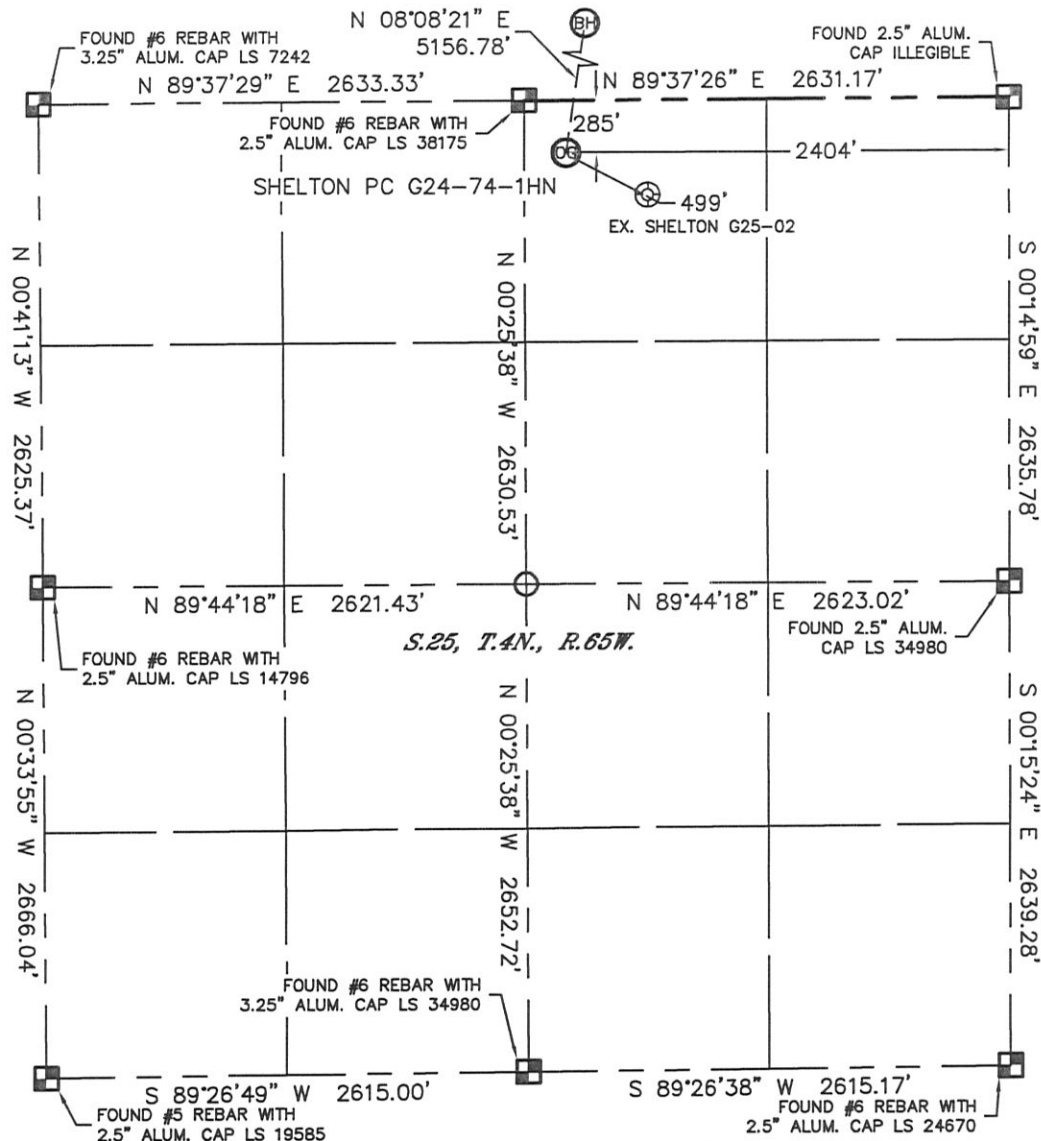


## WELL LOCATION CERTIFICATE

SECTION: 25  
TOWNSHIP: 4N  
RANGE: 65W

THIS MAP DOES NOT REPRESENT A BOUNDARY SURVEY



In accordance with a request from Ryan Hawkins with Noble Energy Inc., Lat40°, Inc. has determined the surface location of the SHELTON PC G24-74-1HN to be 285' from the NORTH line and 2404' from the EAST line as measured at right angles from the section lines of Section 25, Township 4 North, Range 65 West and the bottom hole to be 535' from the NORTH line and 1650' from the EAST line as measured at right angles from the section lines of Section 24, Township 4 North, Range 65 West of the Sixth Principal Meridian, County of Weld, State of Colorado.

I hereby state that this Well Location Certificate was prepared by me, or under my direct supervision, that the fieldwork was completed on 11/4/11, for and on behalf of Noble Energy Inc.. That this is not a Land Survey Plat or an Improvement Survey Plat, and that it is not to be relied upon for establishment of fence, building, or other future improvement lines.

|                                   |                        |
|-----------------------------------|------------------------|
| SURFACE LOCATION                  | BOTTOM HOLE            |
| LATITUDE: 40.28968°N              | LATITUDE: 40.30367°N   |
| LONGITUDE: 104.61087°W            | LONGITUDE: 104.60807°W |
| PDOP: 2.6                         |                        |
| ELEV: 4794'                       |                        |
| 1/4, 1/4: NW1/4NE1/4              |                        |
| NEAREST PROPERTY LINE: 285' NORTH |                        |

## NOTE:

- 1) Bearings shown are Grid Bearings of the Colorado State Plane Coordinate System, North Zone, North American Datum 1983/2007. The lineal dimensions as contained herein are based upon the "U.S. Survey Foot."
- 2) Ground elevations are based on an observed GPS elevation (NAVD 1988 DATUM).
- 3) NEAREST EXISTING WELL: SHELTON G25-02, 499'
- 4) IMPROVEMENTS: See LOCATION DRAWING for all visible improvements within 400' of disturbed area.
- 5) SURFACE USE: CROP FIELD
- 6) INSTRUMENT OPERATOR: ADAM KELLY

## NOTE

According to Colorado law, you must commence any legal action based upon any defect in this W.L.C. within three years after you discover such defect. In no event, may any action based upon any defect in this survey be commenced more than ten years after the date of the certificate shown hereon. (13-80-105 C.R.S.)

## LEGEND

- = ALIQUOT MONUMENT AS DESCRIBED
- = CALCULATED POSITION

## SHEET 1 OF 2

Brian T. Brinkman—On behalf of  
Colorado Licensed Professional  
Land Surveyor No. 38175

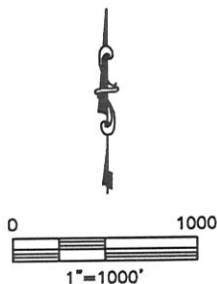
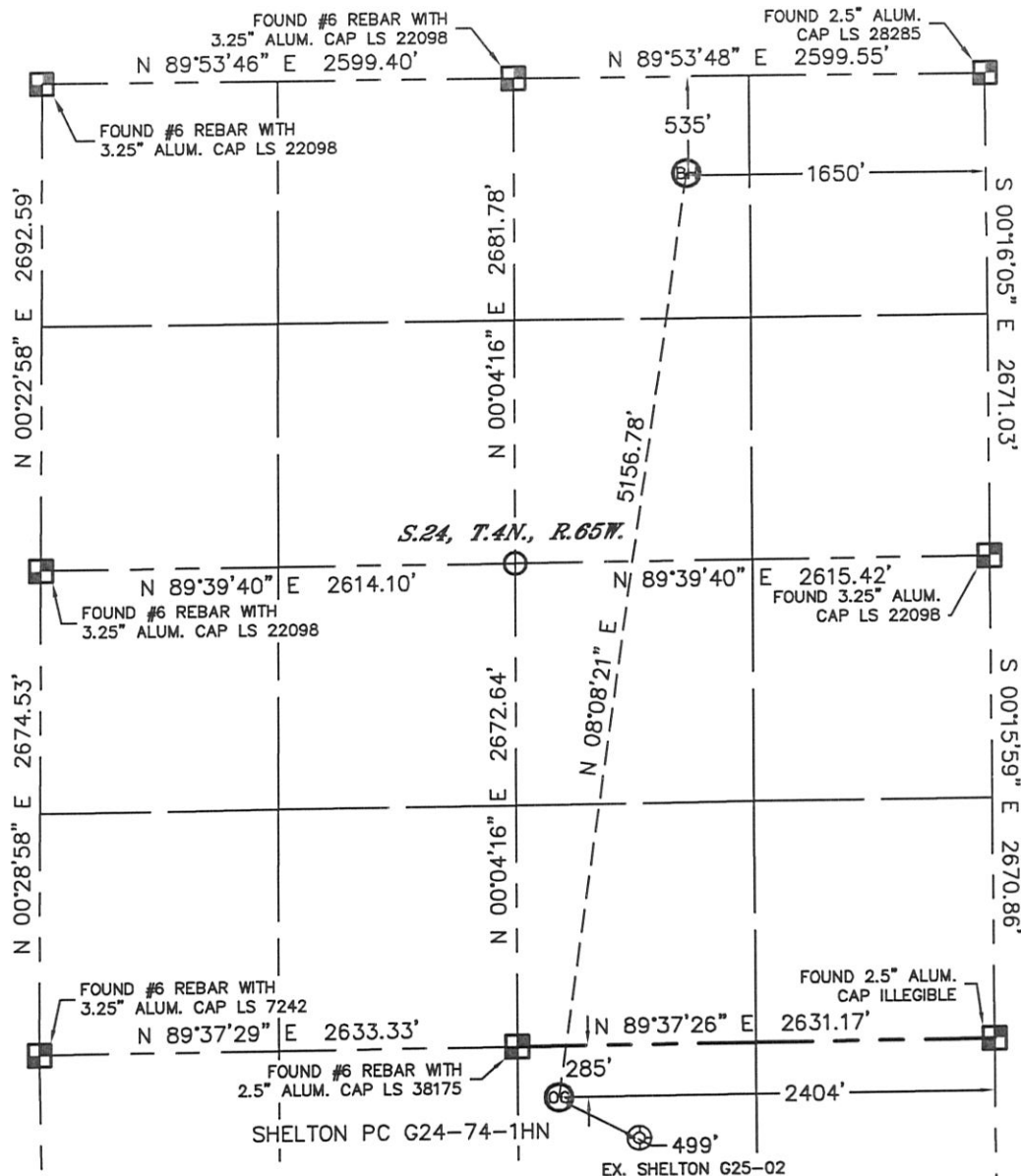
PROJECT#: 2010153



# WELL LOCATION CERTIFICATE

THIS MAP DOES NOT REPRESENT A BOUNDARY SURVEY



SECTION: 25  
TOWNSHIP: 4N  
RANGE: 65W



**NOTE**

According to Colorado law, you must commence any legal action based upon any defect in this W.L.C. within three years after you discover such defect. In no event, may any action based upon any defect in this survey be commenced more than ten years after the date of the certificate shown hereon. (13-80-105 C.R.S.)

**LEGEND**

-  = ALIQUOT MONUMENT AS DESCRIBED
-  = CALCULATED POSITION

**SHEET 2 OF 2**

Brian T. Brinkman—On behalf of Lat40°, Inc.  
Colorado Licensed Professional  
Land Surveyor No. 38175

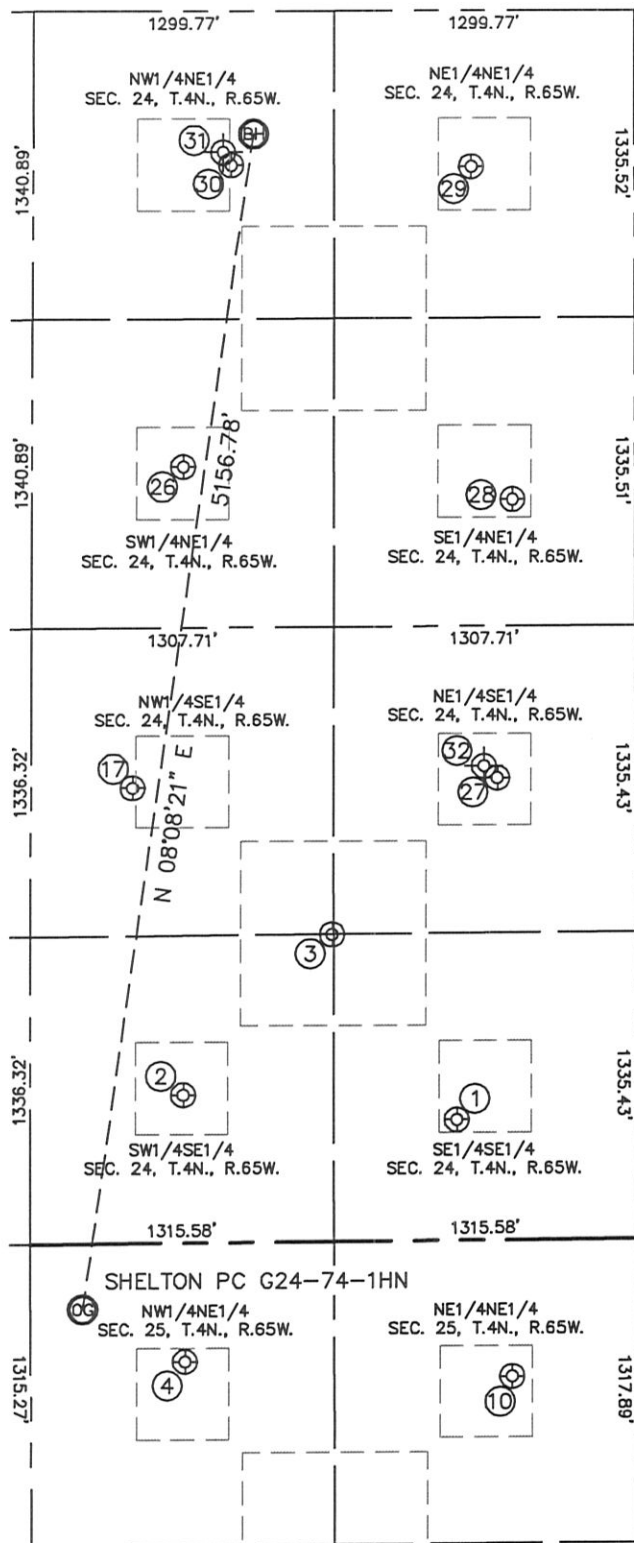
PROJECT#: 2010153



# SITE SKETCH

SHELTON PC G24-74-1HN

SECTION: 25  
TOWNSHIP: 4N  
RANGE: 65W



- ①  
BURKE RG 24-16  
SE1/4SE1/4  
525' FSL  
780' FEL  
LAT-40.29189°N  
LONG-104.60503°W  
PDOP: 1.8  
ELEV: 4834

②  
BURKE 24-2  
SW1/4SE1/4  
643' FSL  
1965' FEL  
LAT-40.29223°N  
LONG-104.60927°W  
PDOP: 1.7  
ELEV: 4808

③  
BROOMFIELD 24-45  
SW1/4SE1/4  
1336' FSL  
1317' FEL  
LAT-40.29412°N  
LONG-104.60694°W  
PDOP: 3.1  
ELEV: 4816

④  
SHELTON G25-02  
NW1/4NE1/4  
517' FNL  
1962' FEL  
LAT-40.28904°N  
LONG-104.60929°W  
PDOP: 2.2  
ELEV: 4804

⑩  
PLUSS 25-1  
NE1/4NE1/4  
594' FNL  
543' FEL  
LAT-40.28882°N  
LONG-104.60421°W  
PDOP: 1.5  
ELEV: 4827

⑪  
API 24-42  
NW1/4SE1/4  
1979' FSL  
2180' FEL  
LAT-40.29589°N  
LONG-104.61002°W  
PDOP: 2.0  
ELEV: 4799'

②⑥  
BURKE 24-1  
SW1/4NE1/4  
1981' FNL  
1957' FEL  
LAT-40.29971°N  
LONG-104.60919°W  
PDOP: 2.5  
ELEV: 4801'

②⑦  
BURKE 24-3  
NE1/4SE1/4  
2010' FSL  
600' FEL  
LAT-40.29597°N  
LONG-104.60436°W  
PDOP: 2.4  
ELEV: 4831'

②⑧  
BURKE RG 24-8  
SE1/4NE1/4  
2126' FNL  
532' FEL  
LAT-40.29928°N  
LONG-104.60409°W  
PDOP: 2.4  
ELEV: 4836'

②⑨  
API 24-1  
NE1/4NE1/4  
678' FNL  
709' FEL  
LAT-40.30326°N  
LONG-104.60469°W  
PDOP: 2.3  
ELEV: 4837'

③①  
MILLER 24-1 S  
(PLUGGED & ABANDONED)  
NW1/4NE1/4  
614' FNL (COGCC)  
1782' FEL (COGCC)  
LAT-40.303306°N  
(COGCC)  
LONG-104.608546°W  
(COGCC)  
PDOP: -  
ELEV: 4820' (COGCC)

③②  
BURKE 24-3S  
(PLUGGED & ABANDONED)  
NE1/4SE1/4  
2063' FSL (COGCC)  
658' FEL (COGCC)  
LAT-40.29613°N  
(COGCC)  
LONG-104.60463°W  
(COGCC)  
PDOP: -  
ELEV: 4830' (COGCC)

