

PROPOSED WELLBORE SPACING UNIT

T6N, R67W, 6th P.M.

GREAT WESTERN OIL & GAS COMPANY

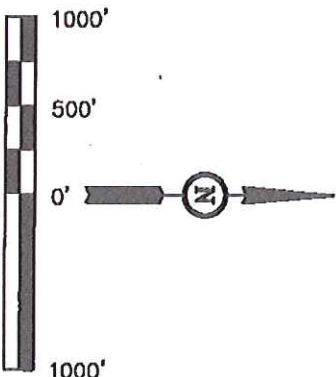
Well location, H-Y #29-21-3, located as shown in the NE 1/4 NW 1/4 of Section 29, T6N, R67W, 6th P.M., Weld County, Colorado.

BASIS OF ELEVATION

USGS COOPERATIVE BASE NETWORK CONTROL STATION, DESIGNATION 'VERMILYEA'. NGS DATA SHEET LISTS THE NAVD 88 ELEVATION AS BEING 5026 FEET

BASIS OF BEARINGS

BASIS OF BEARINGS IS A G.P.S. OBSERVATION.



CERTIFICATE

THIS IS TO CERTIFY THAT THE ABOVE PLAT WAS PREPARED FROM FIELD NOTES OF ACTUAL SURVEYS MADE BY ME OR UNDER MY SUPERVISION AND THAT THE SAME ARE TRUE AND CORRECT TO THE BEST OF MY KNOWLEDGE AND BELIEF.

REGISTERED LAND SURVEYOR
REGISTRATION NO. 12492
STATE OF COLORADO
02-29-12

REVISED: 02-29-12

UINTAH ENGINEERING & LAND SURVEYING

85 SOUTH 200 EAST - VERNAL, UTAH 84078

(435) 789-1017

SCALE 1" = 1000'

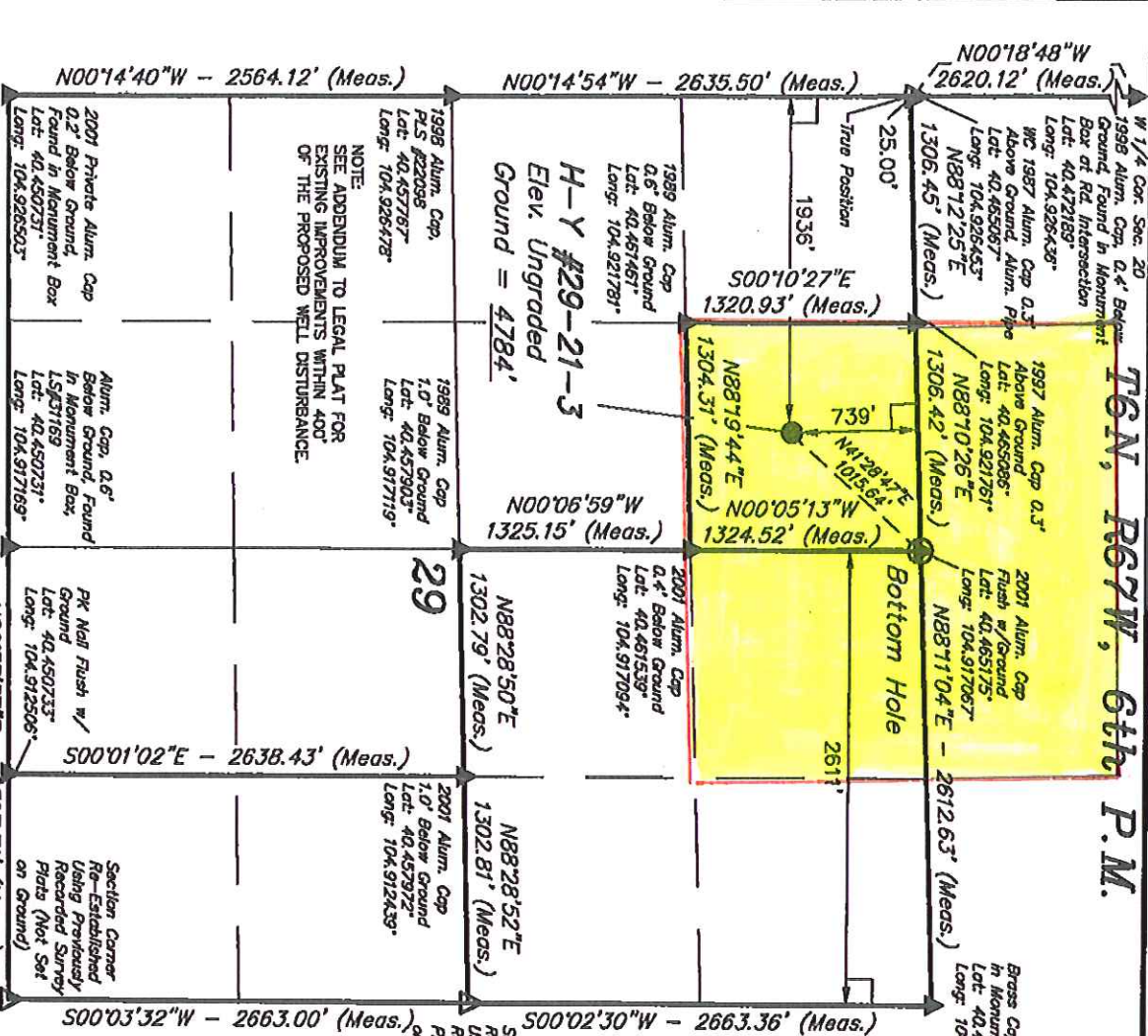
PARTY L.S. A.J. S.L.

WEATHER COOL

DATE SURVEYED: 02-07-12 DATE DRAWN: 02-10-12

REFERENCES G.L.O. PLAT

FILE GREAT WESTERN OIL & GAS COMPANY



LEGEND:

- = 90° SYMBOL
- ▲ = PROPOSED WELL HEAD.
- △ = SECTION CORNERS LOCATED.
- = SECTION CORNERS RE-ESTABLISHED.
- (Not Set on Ground.)

PDOP = 2.1