

CEMENT BOND LOG



Mesa Wireline

Company	ENCANA OIL & GAS (USA) INC.		
Well	BURY CRANDELL 8-2-23		
Field	WATTENBERG		
County	BROOMFIELD		
State	COLORADO		
Company	ENCANA OIL & GAS (USA) INC.		
Well	BURY CRANDELL 8-2-23		
Field	WATTENBERG		
County	BROOMFIELD		
State	COLORADO		
Location:	API #: 05-014-20713-0000		Other Services
	SHL: 1061' FNL & 1045' FEL BHL: 1325' FNL & 50' FEL SEC: 23 TWP: 1N RGE: 68W		NONE
Permanent Datum	GROUND LEVEL		Elevation 5113'
Log Measured From	KELLY BUSHING = 13'		K.B. 5126' D.F. 5125' G.L. 5113'
Drilling Measured From	KELLY BUSHING		

Date	17 FEBRUARY 2012									
Run Number	ONE									
Depth Driller	8525'									
Depth Logger	8480'									
Bottom Logged Interval	8480'									
Top Log Interval	3800'									
Open Hole Size	7.875"									
Type Fluid	WATER									
Density / Viscosity	~8.3#									
Max. Recorded Temp.	261 DEG F									
Estimated Cement Top	4100'									
Time Well Ready	N/A									
Time Logger on Bottom	N/A									
Equipment Number	10501PRD01									
Location	AULT, COLORADO									
Recorded By	V.FULLER									
Witnessed By	TOM MAJORS									
Borehole Record					Tubing Record					
Run Number	Bit	From	To	Size	Weight	From	To			
ONE	12.25"	0'	1090'							
TWO	7.875"	1090'	8539'							
Casing Record	Size	Wgt/Ft	Top	Bottom						
Surface String	8.625"	24#	0'	1090'						
Prot. String										
Production String	4.50"	11.6#	0'	8539'						
Liner										

<<< Fold Here >>>

All interpretations are opinions based on inferences from electrical or other measurements and we cannot and do not guarantee the accuracy or correctness of any interpretation, and we shall not, except in the case of gross or willful negligence on our part, be liable or responsible for any loss, costs, damages, or expenses incurred or sustained by anyone resulting from any interpretation made by any of our officers, agents or employees. These interpretations are also subject to our general terms and conditions set out in our current Price Schedule.

Comments

THIS LOG NOT CORRELATED TO ANY OTHER LOG
SHORT JOINT = 7390'-7410'

WE APPRECIATE YOUR BUSINESS, MESA WIRELINE LLC, GRAND JUNCTION CO. (970) 257-0458



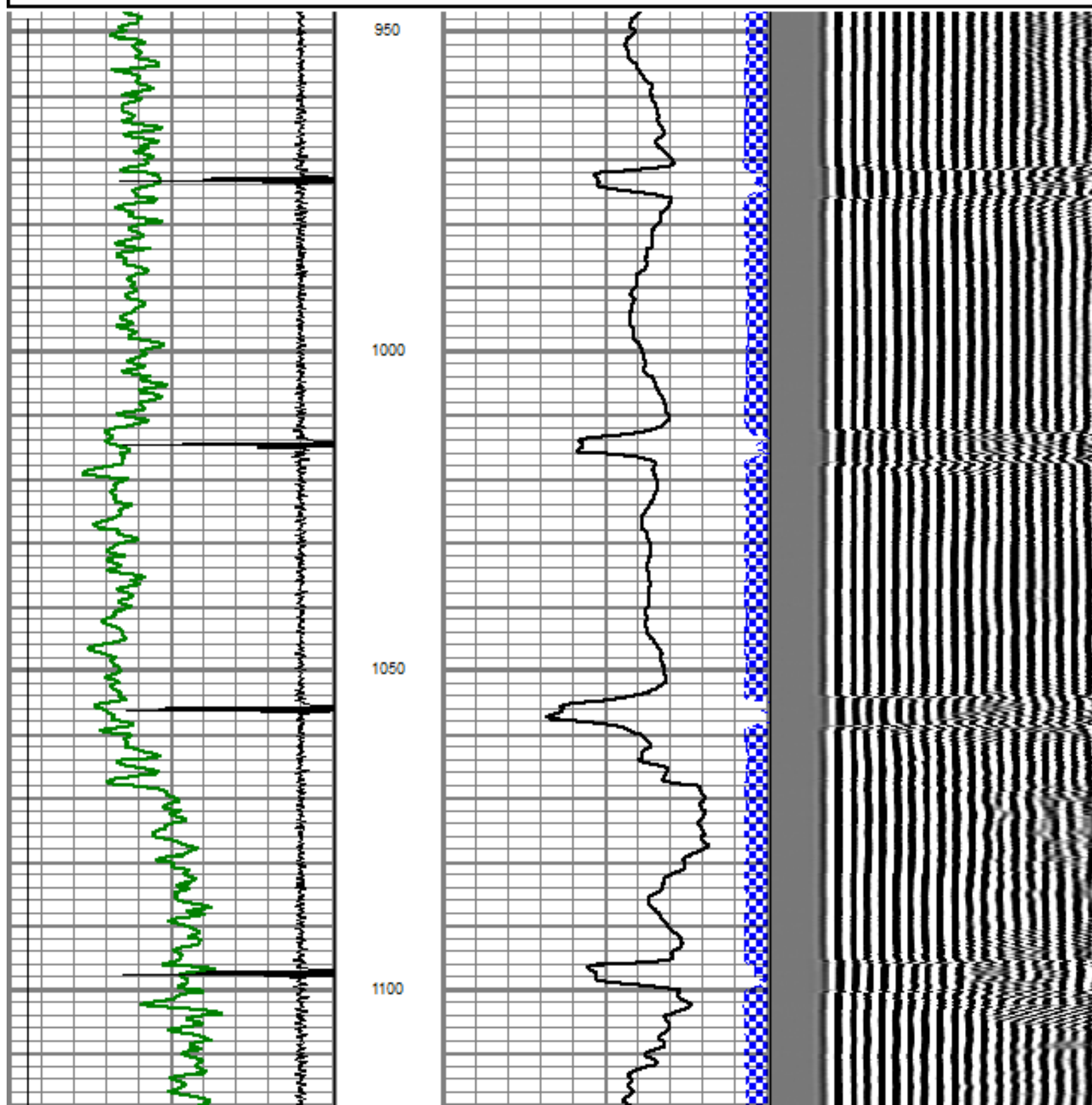
TOP PASS

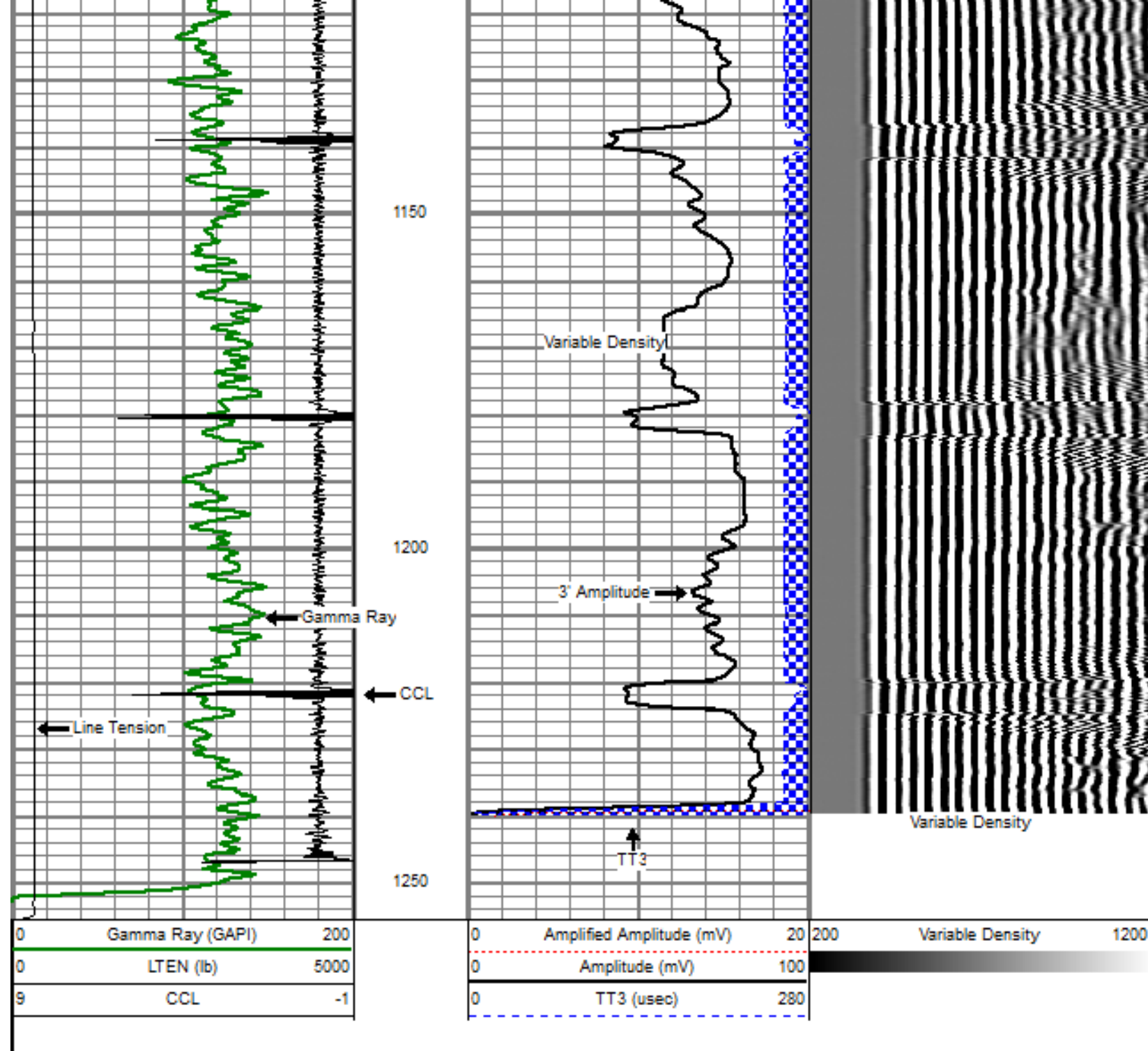
Database File: bury_crandell 8-2-23.db
Dataset Pathname: pass4.1
Presentation Format: dobl_prb
Dataset Creation: Fri Feb 17 12:48:59 2012 by Calc SCH 110722
Charted by: Depth in Feet scaled 1:240

0	Gamma Ray (GAPI)	200
0	LTEN (lb)	5000
9	CCL	-1

0	Amplified Amplitude (mV)	20
0	Amplitude (mV)	100
0	TT3 (usec)	280

200 Variable Density 1200

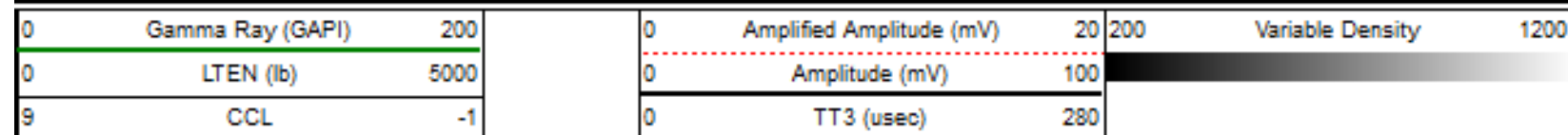


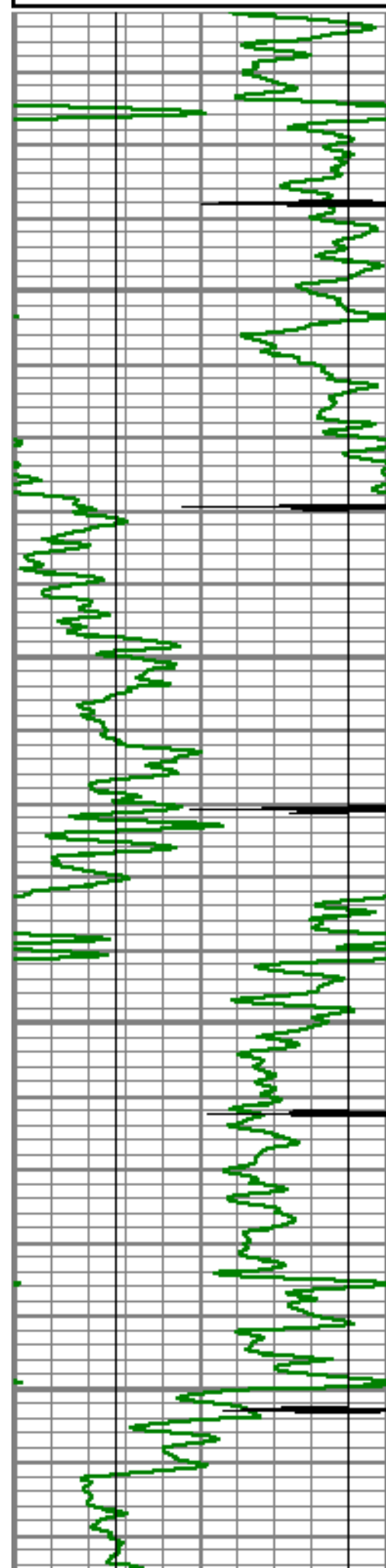


REPEAT PASS

5" = 100'

Database File: bury crandell 8-2-23.db
 Dataset Pathname: pass2
 Presentation Format: dobl_prb
 Dataset Creation: Fri Feb 17 11:15:13 2012 by Log SCH 110722
 Charted by: Depth in Feet scaled 1:240



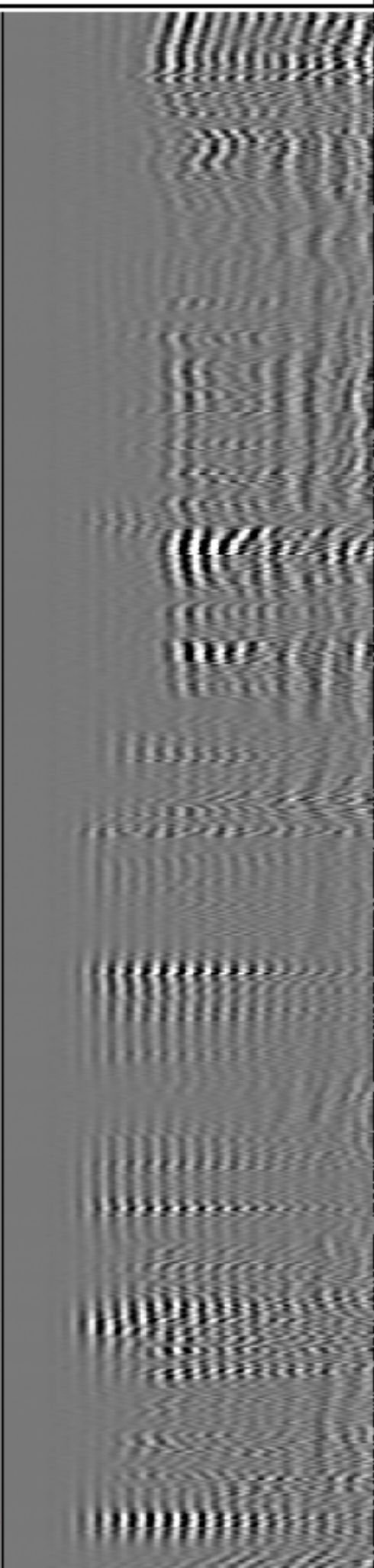
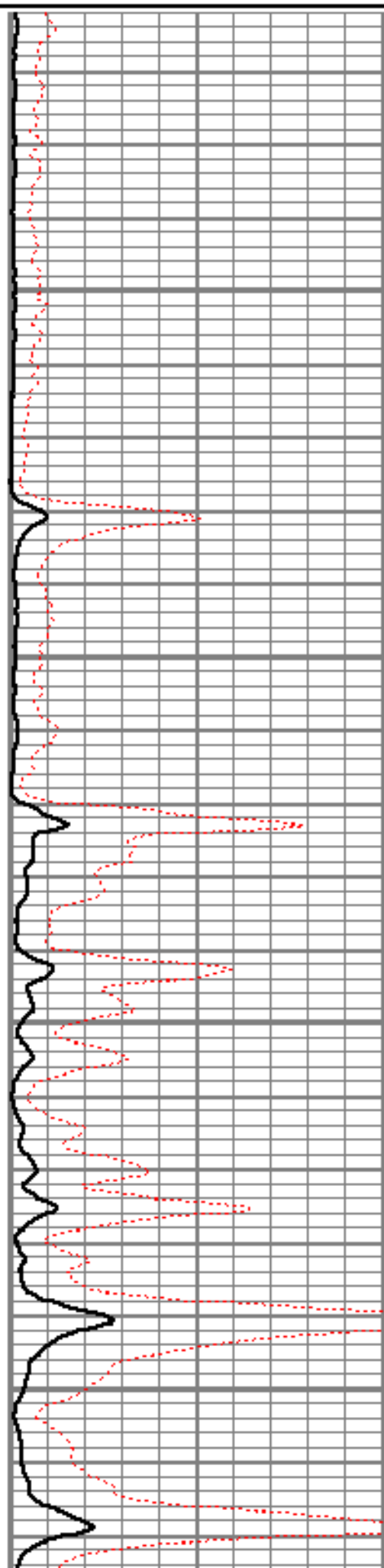


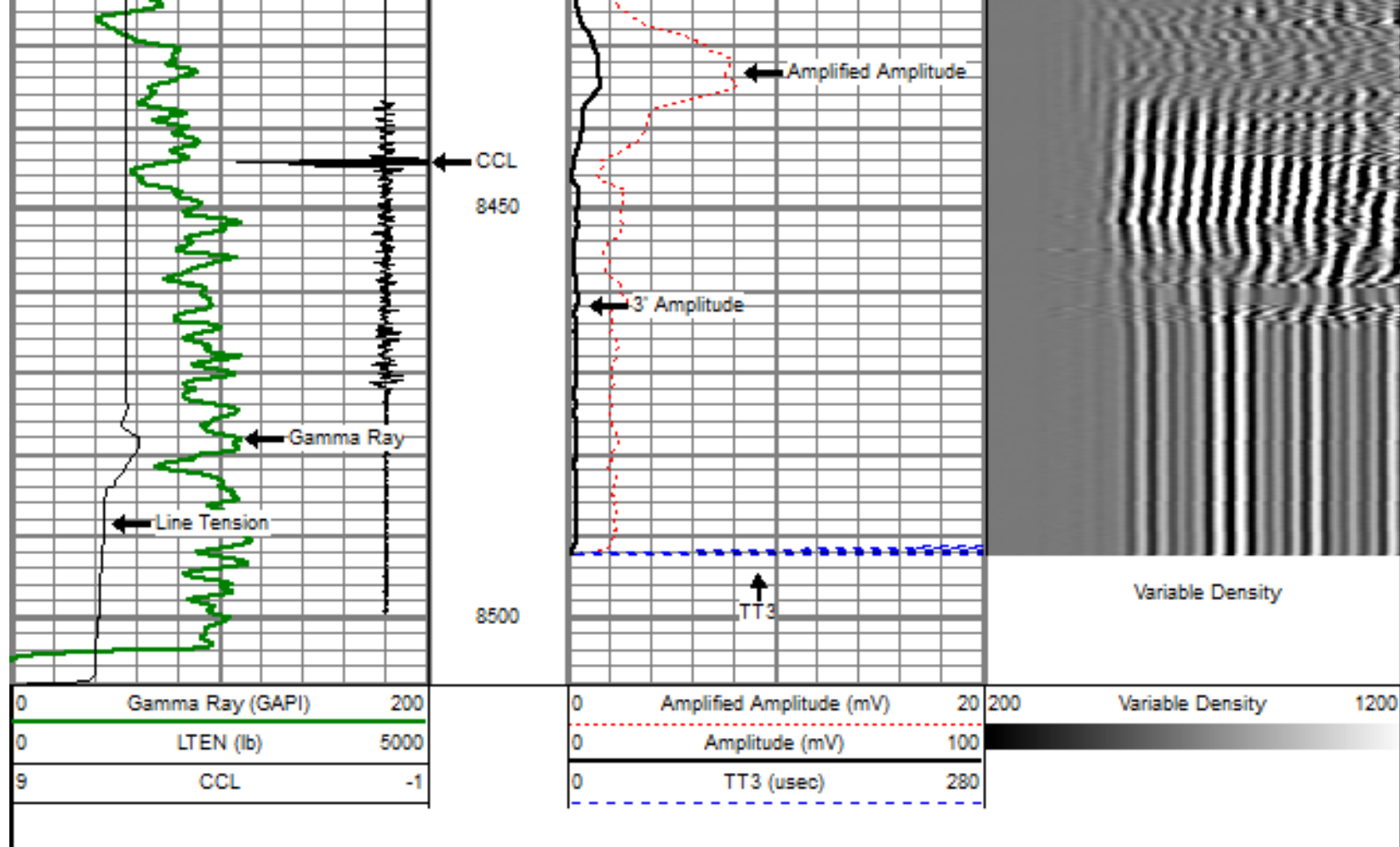
8250

8300

8350

8400

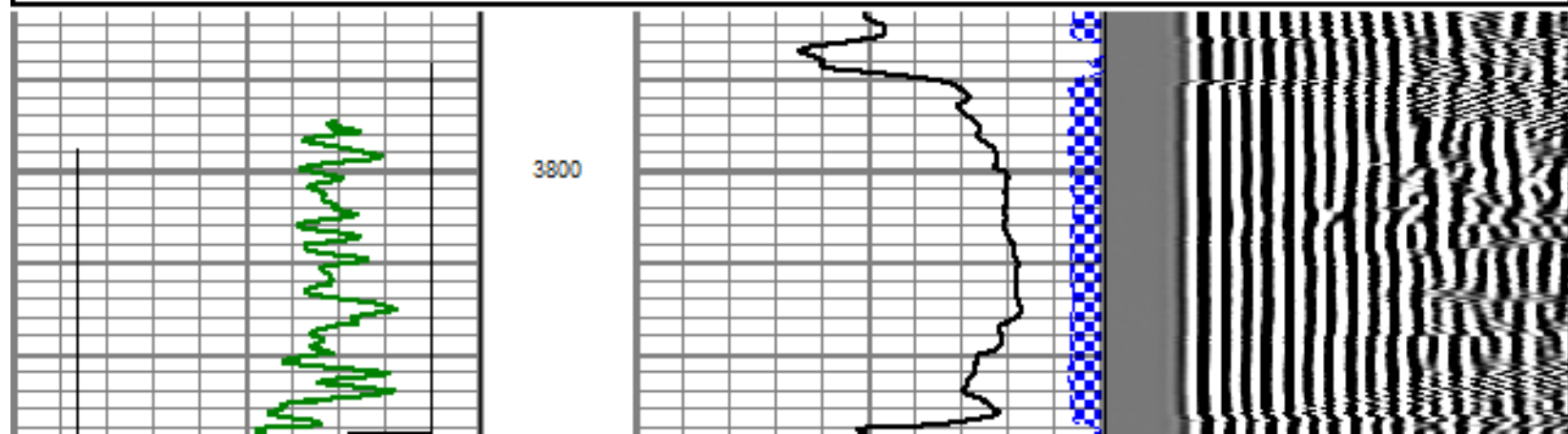
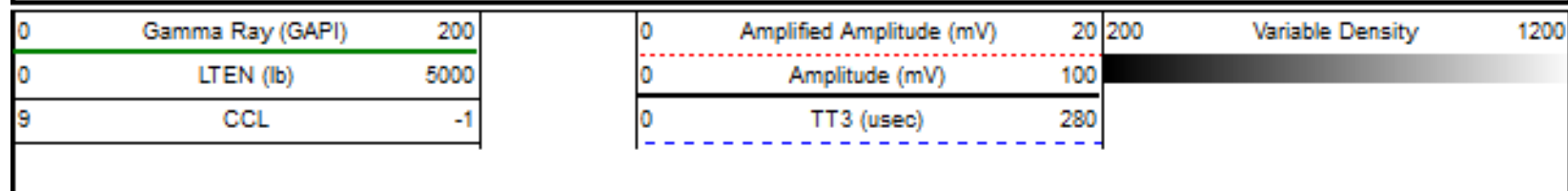


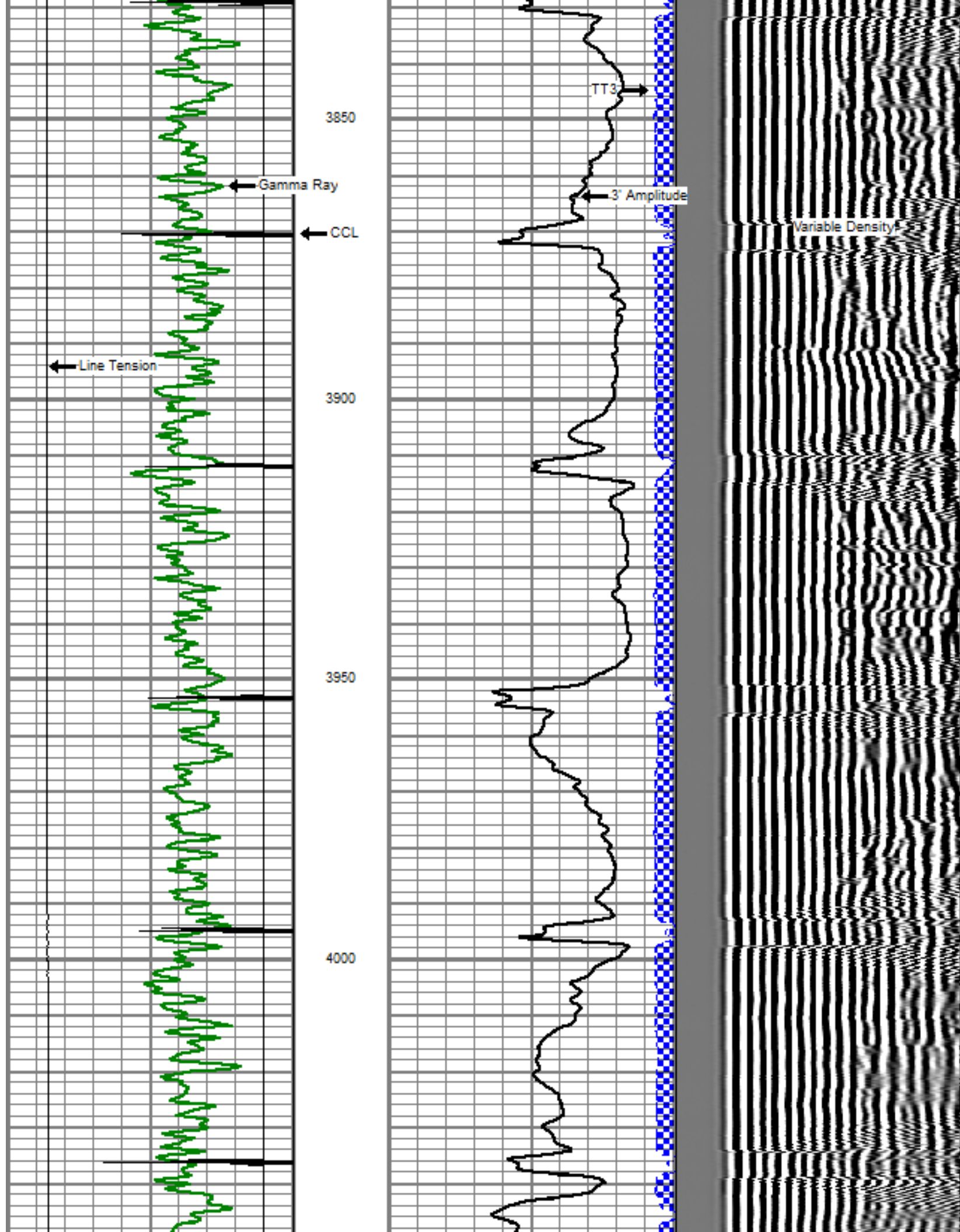


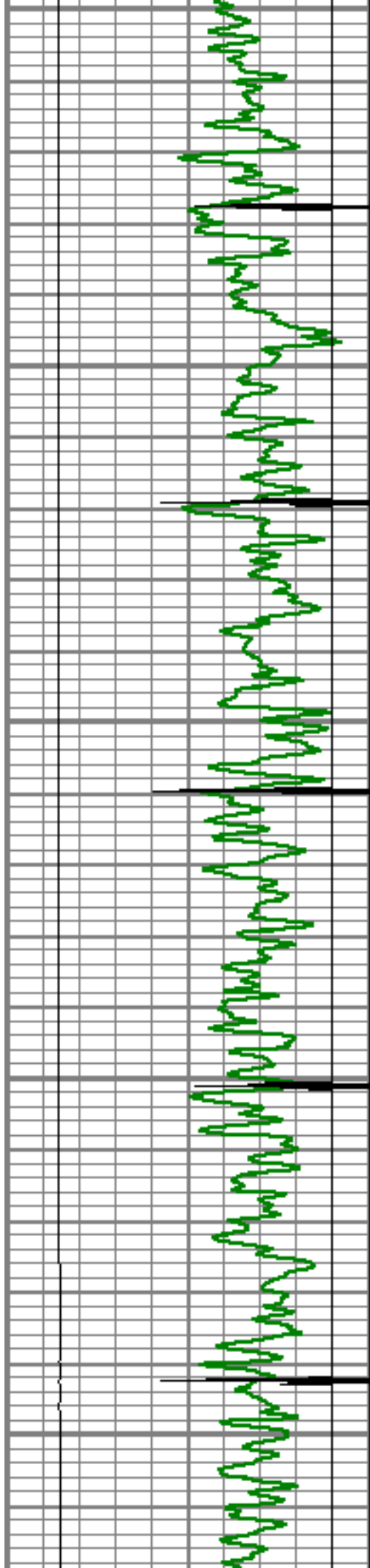
MIAN PASS

5" = 100'

Database File: bury crandell 8-2-23.db
 Dataset Pathname: pass3.3
 Presentation Format: dobl_prb
 Dataset Creation: Fri Feb 17 12:29:53 2012 by Calc SCH 110722
 Charted by: Depth in Feet scaled 1:240







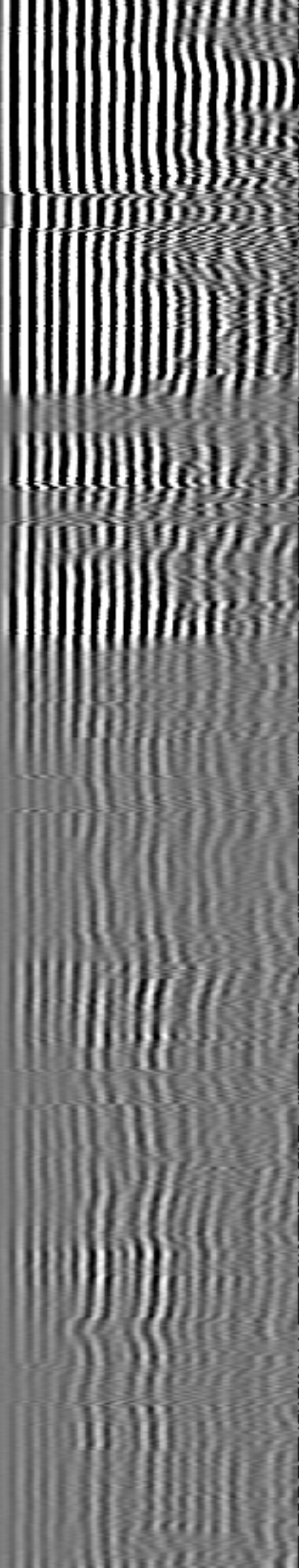
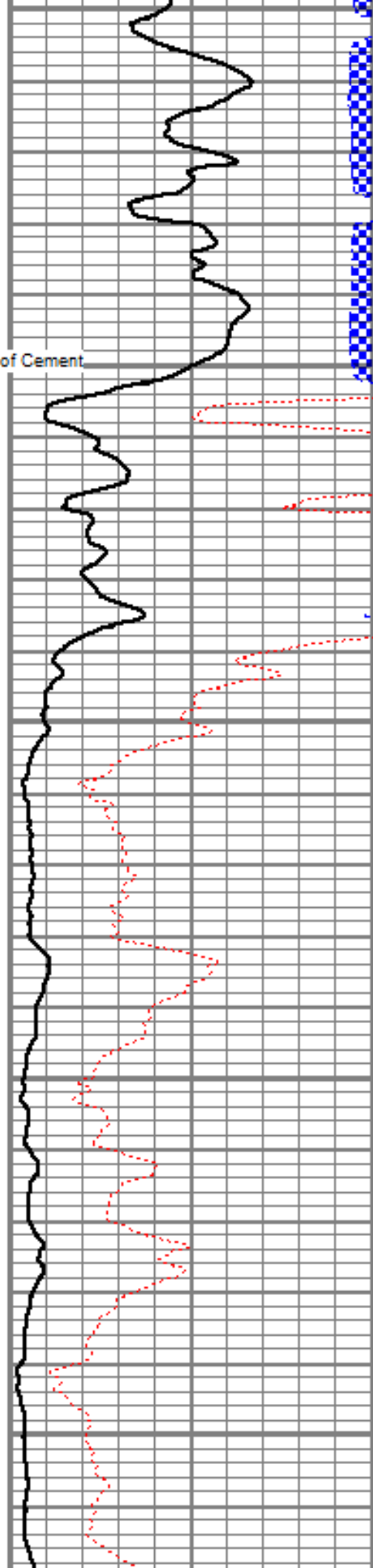
4050

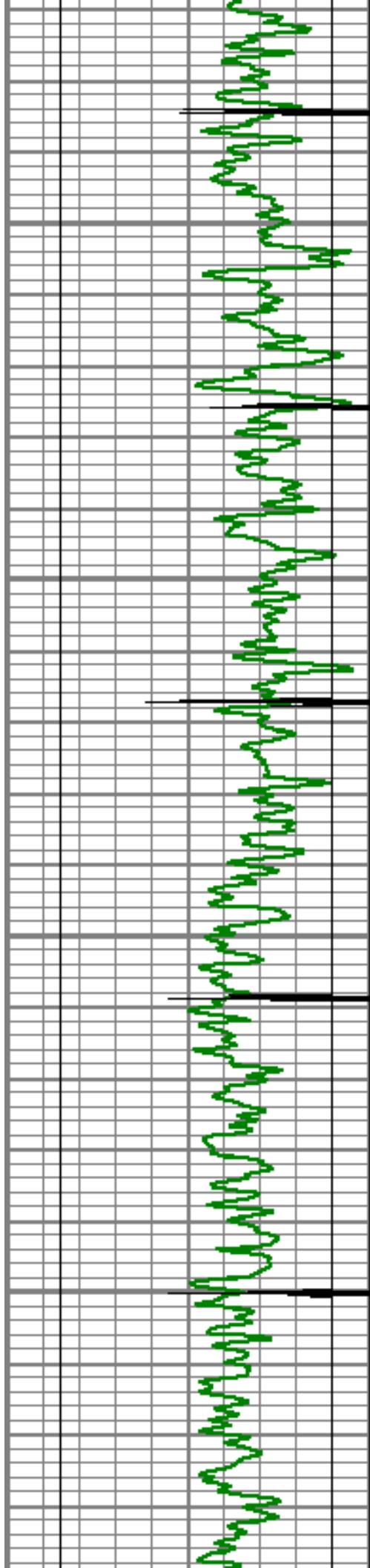
4100 Top of Cement

4150

4200

4250



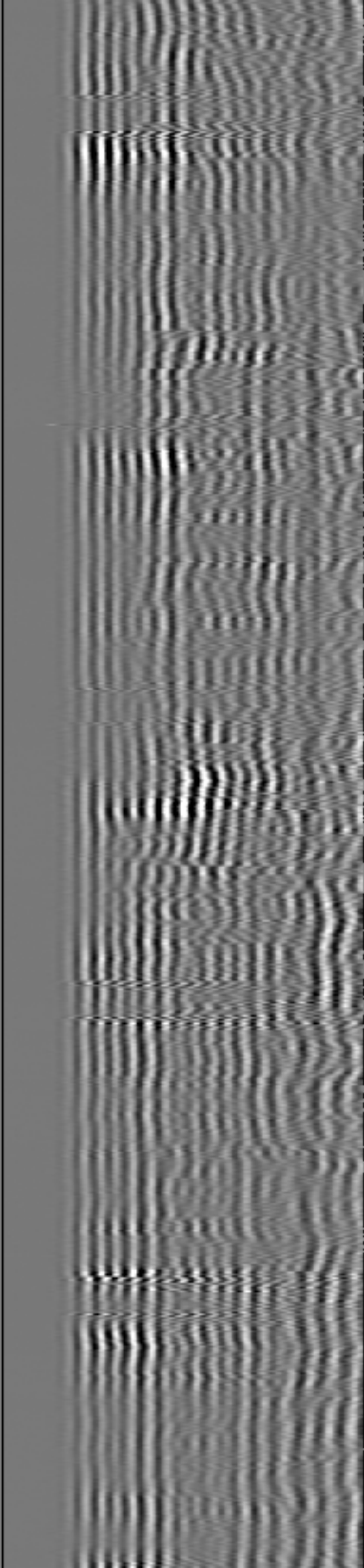
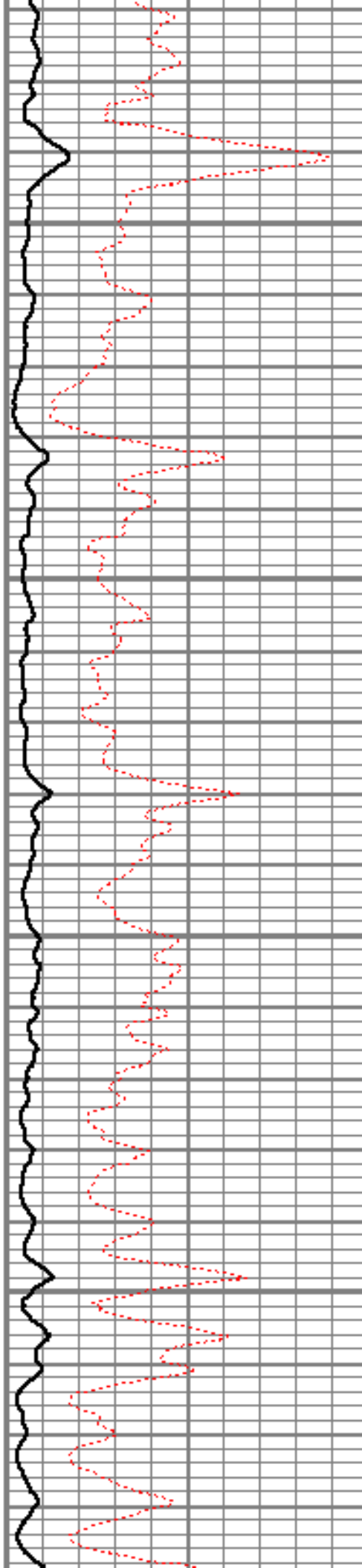


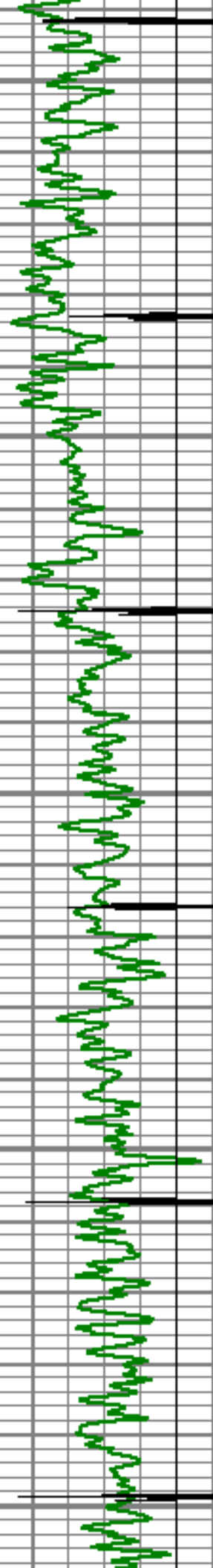
4300

4350

4400

4450





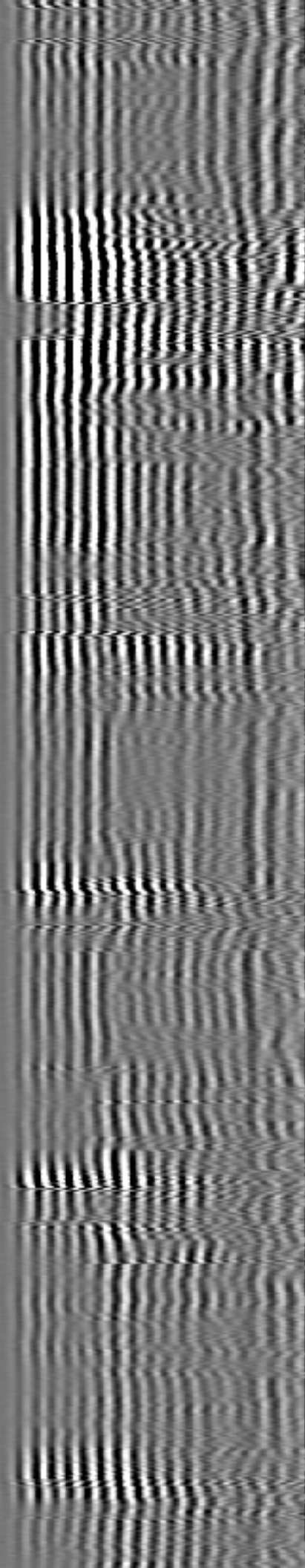
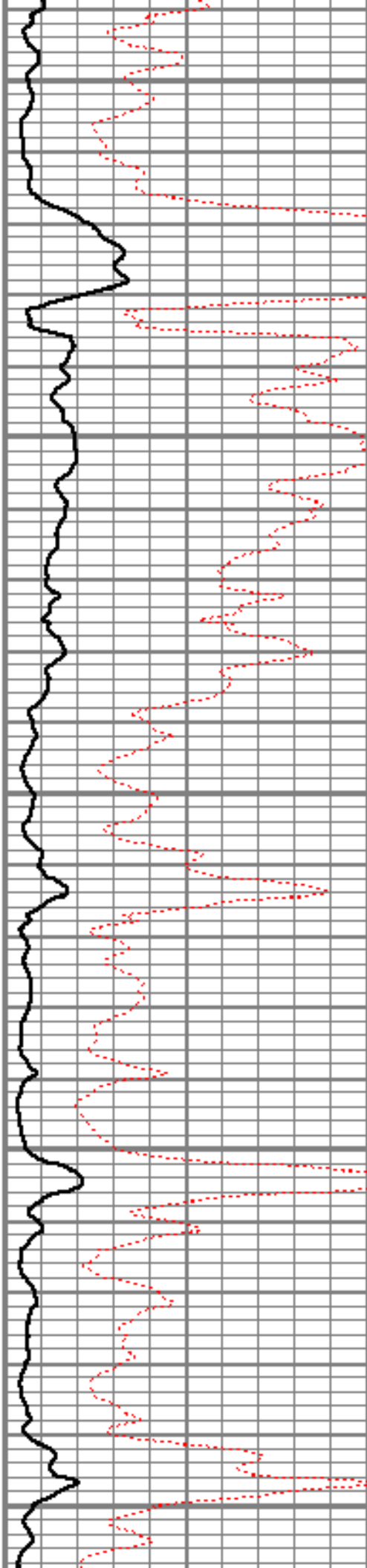
4500

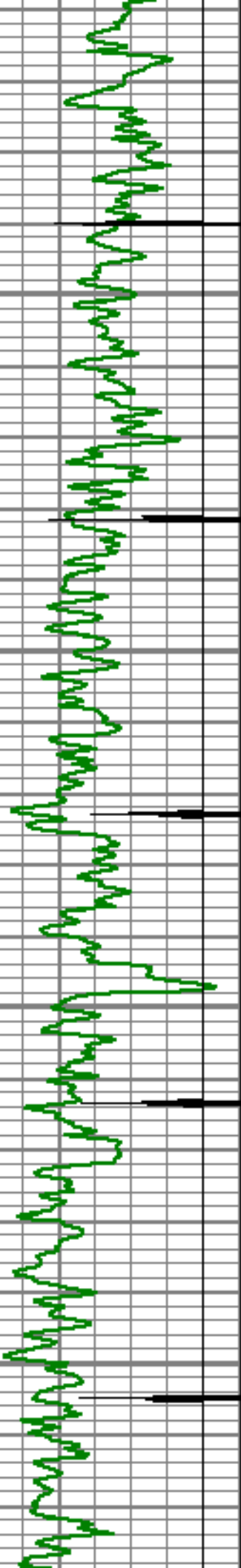
4550

4600

4650

4700



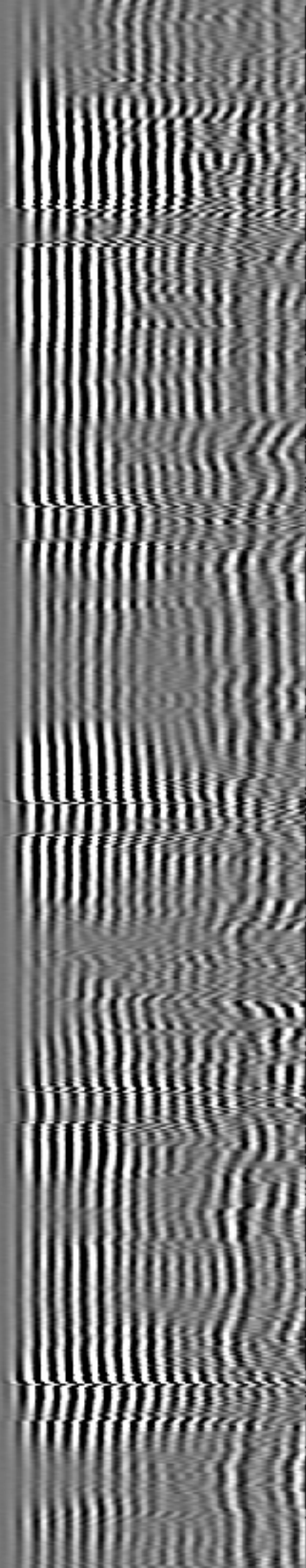
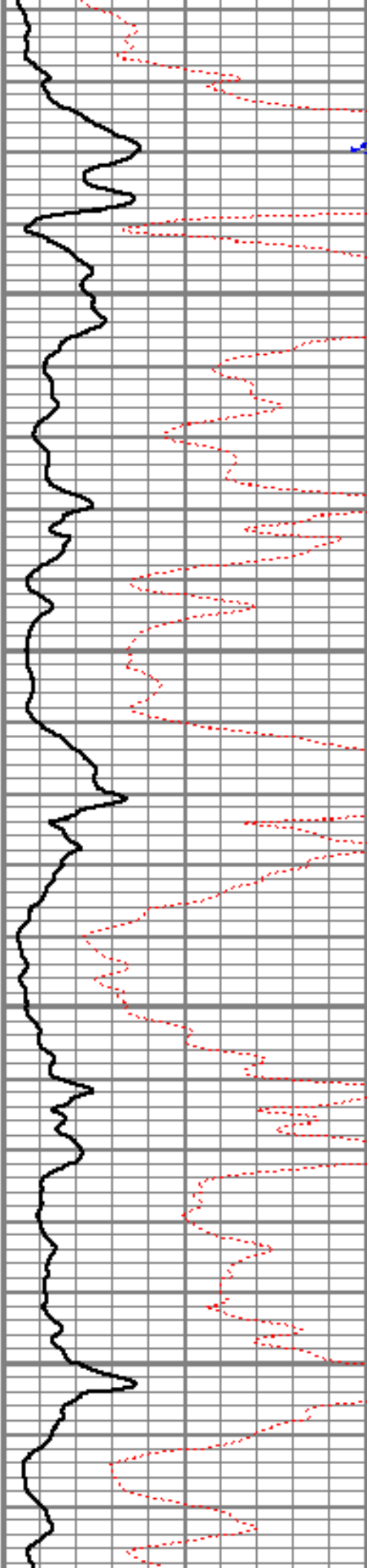


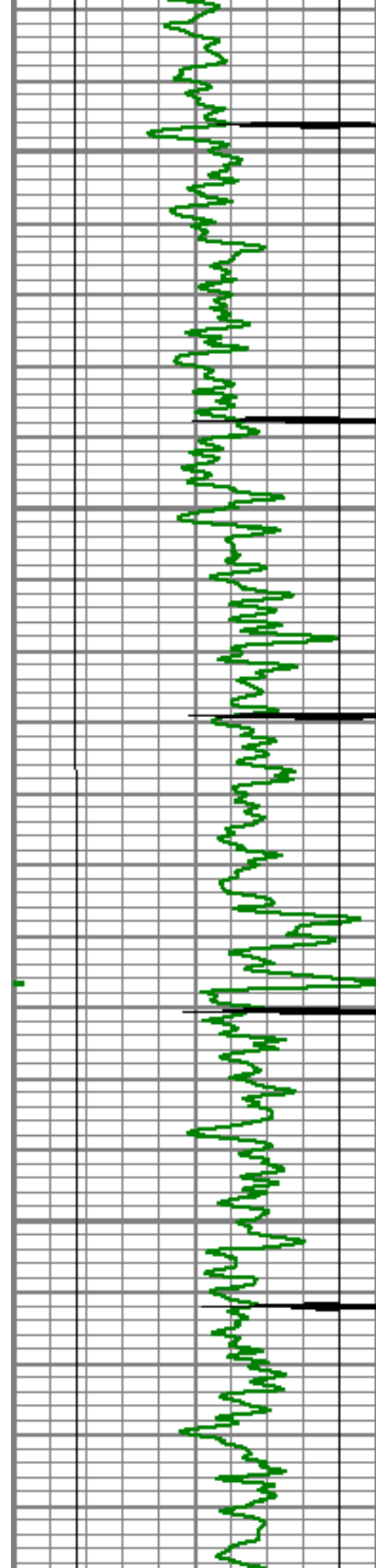
4750

4800

4850

4900



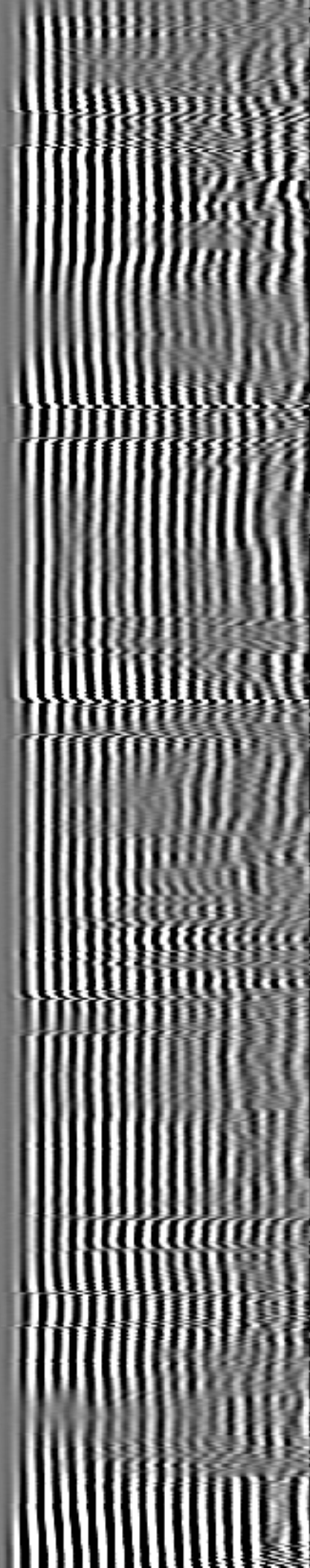
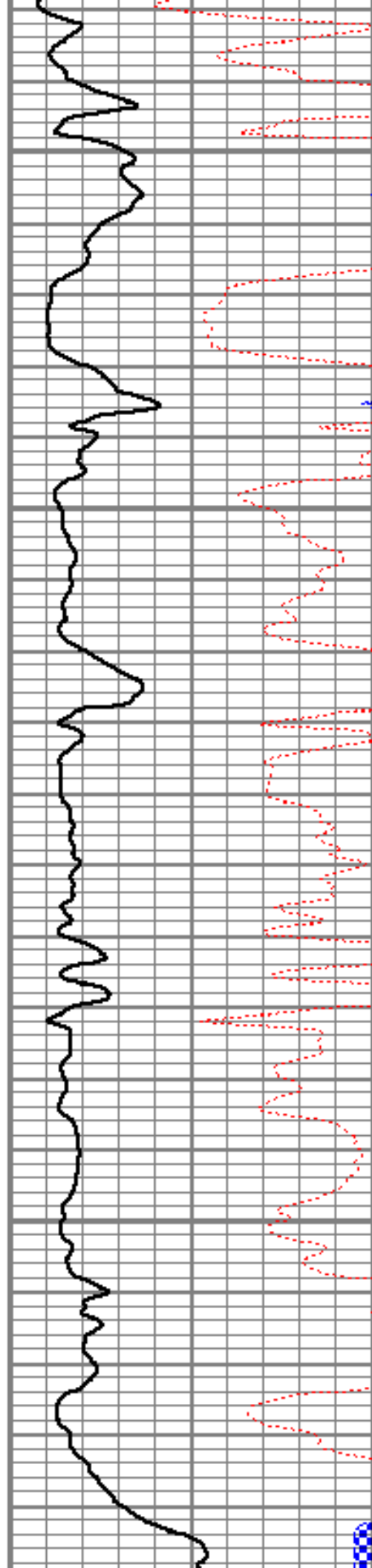


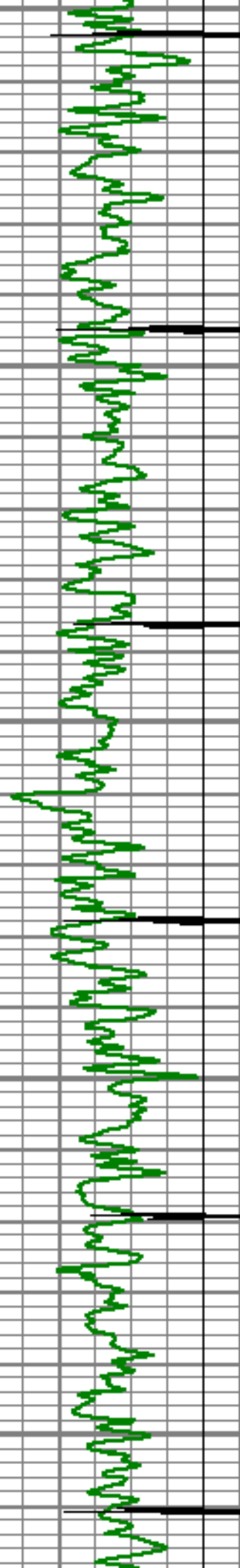
4950

5000

5050

5100





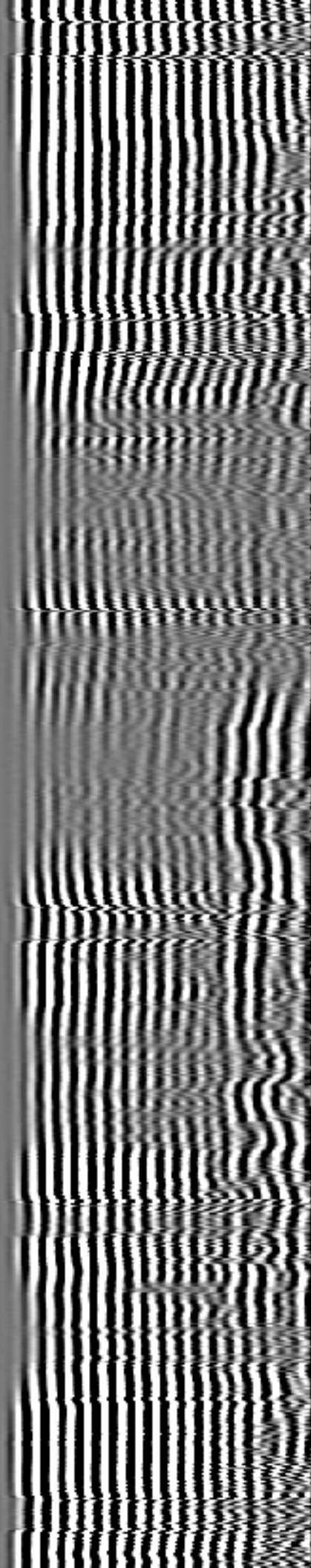
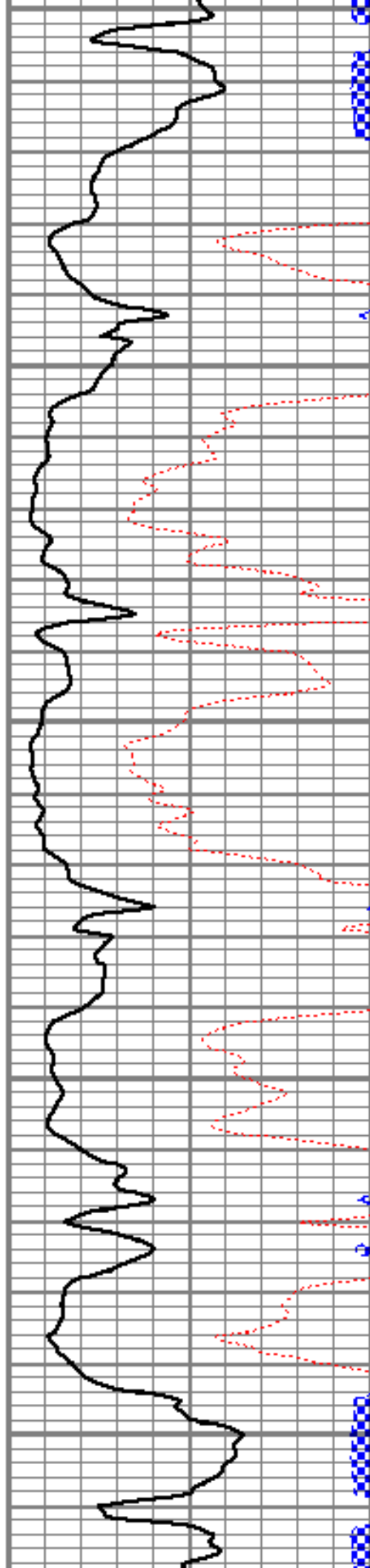
5150

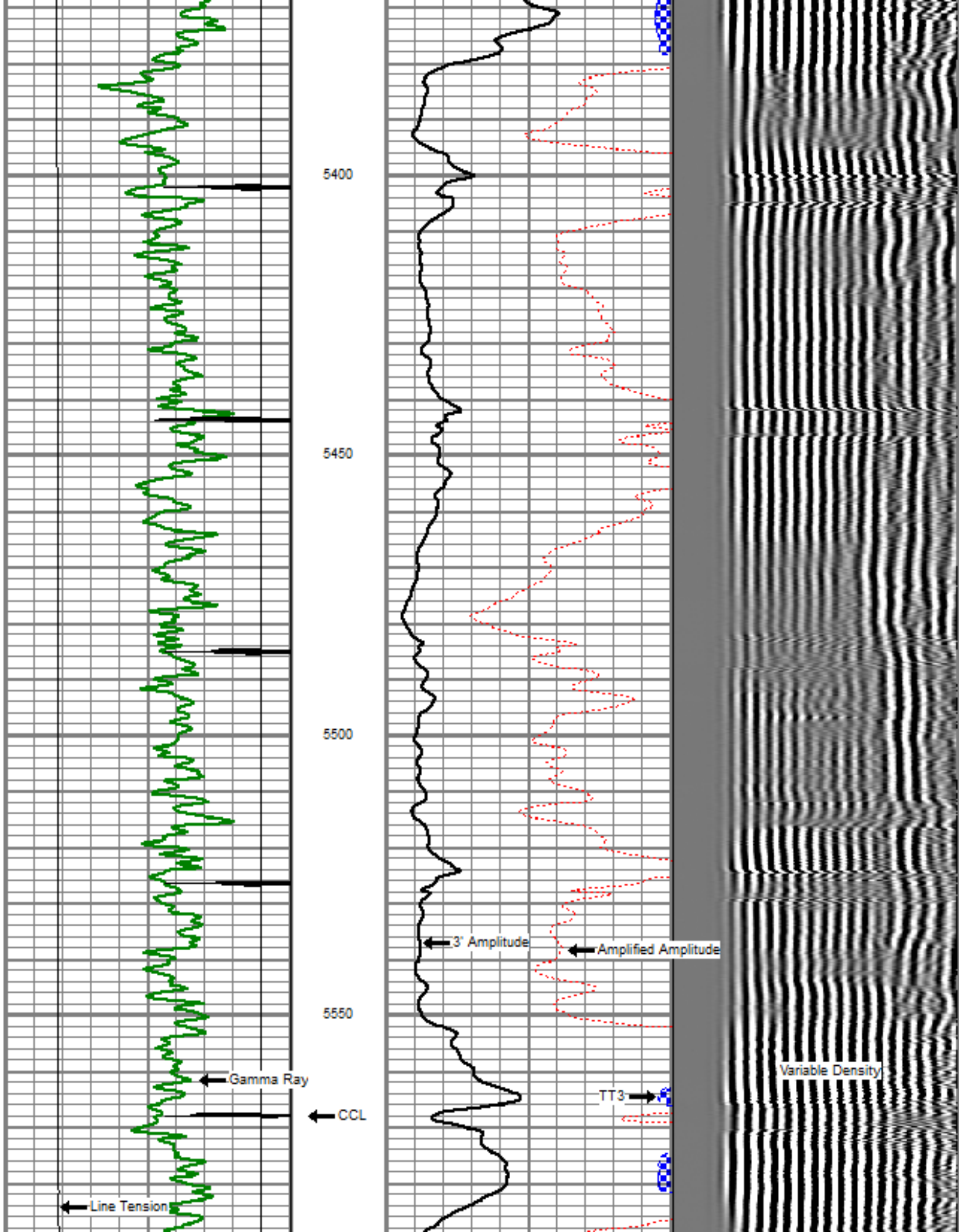
5200

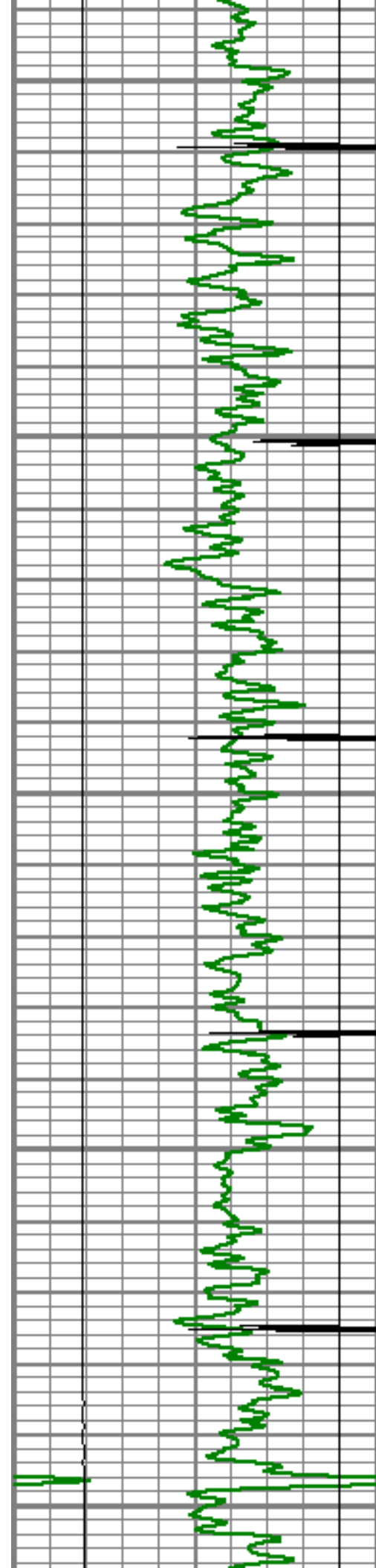
5250

5300

5350







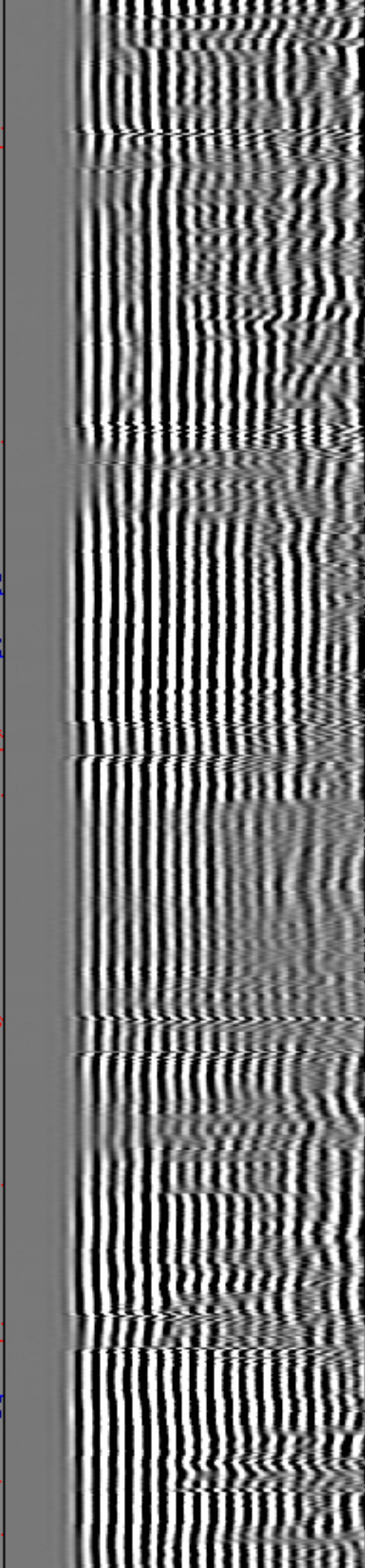
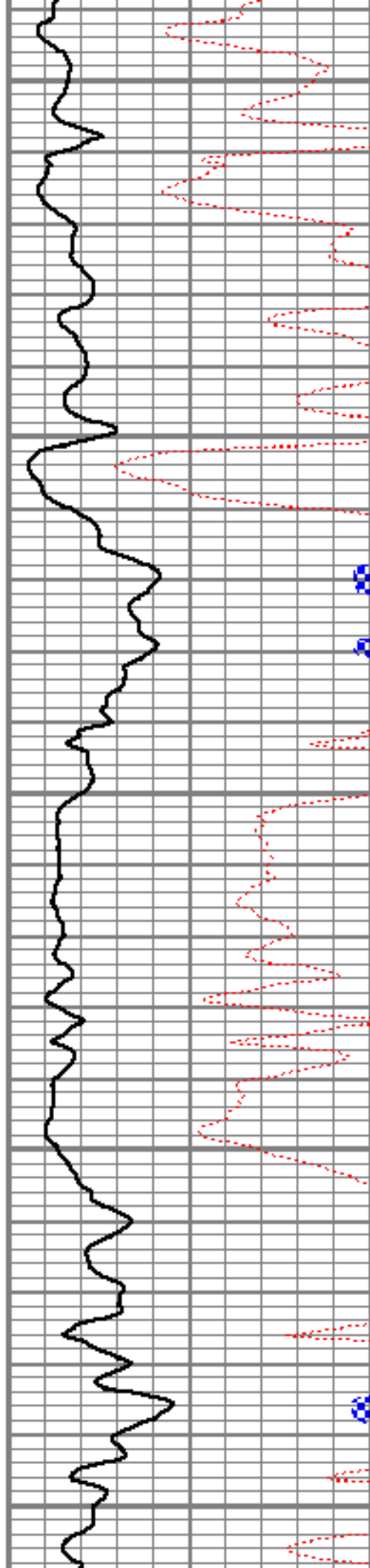
5600

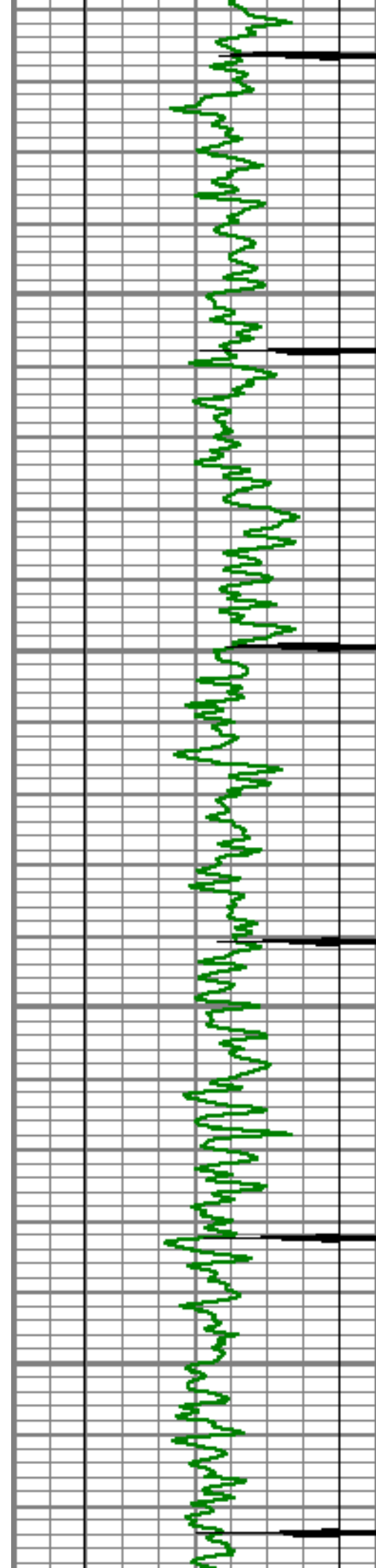
5650

5700

5750

5800



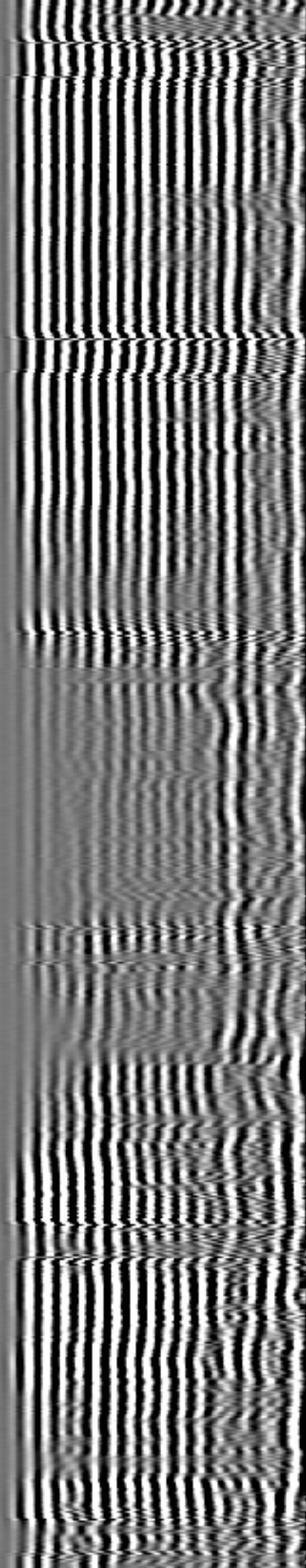
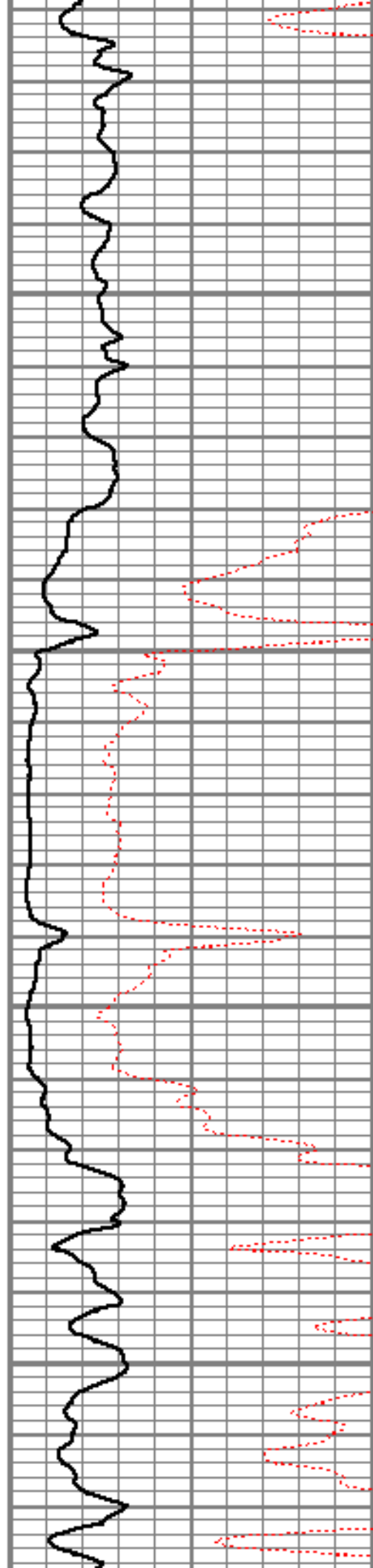


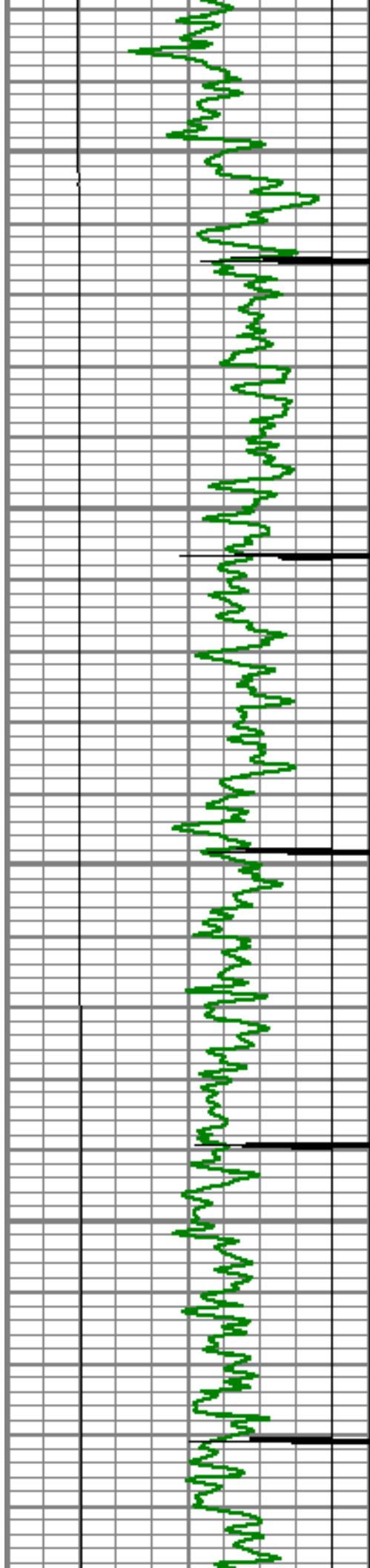
5850

5900

5950

6000



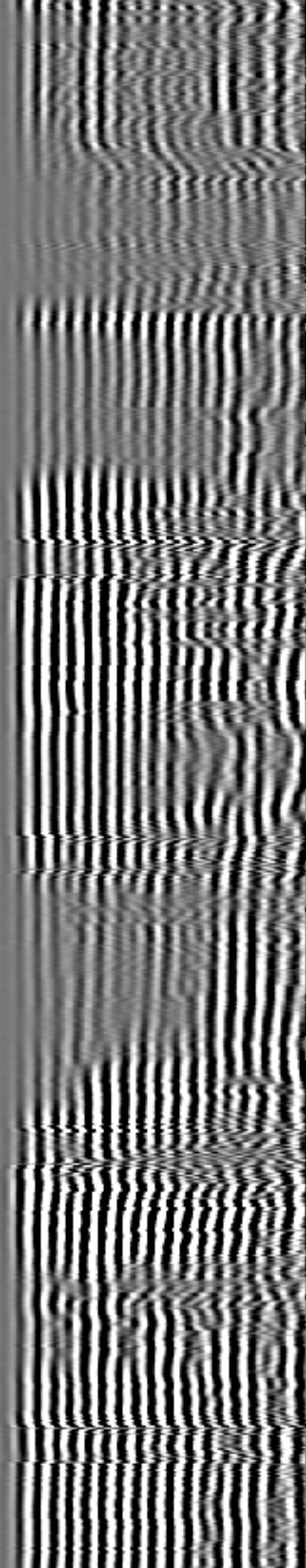
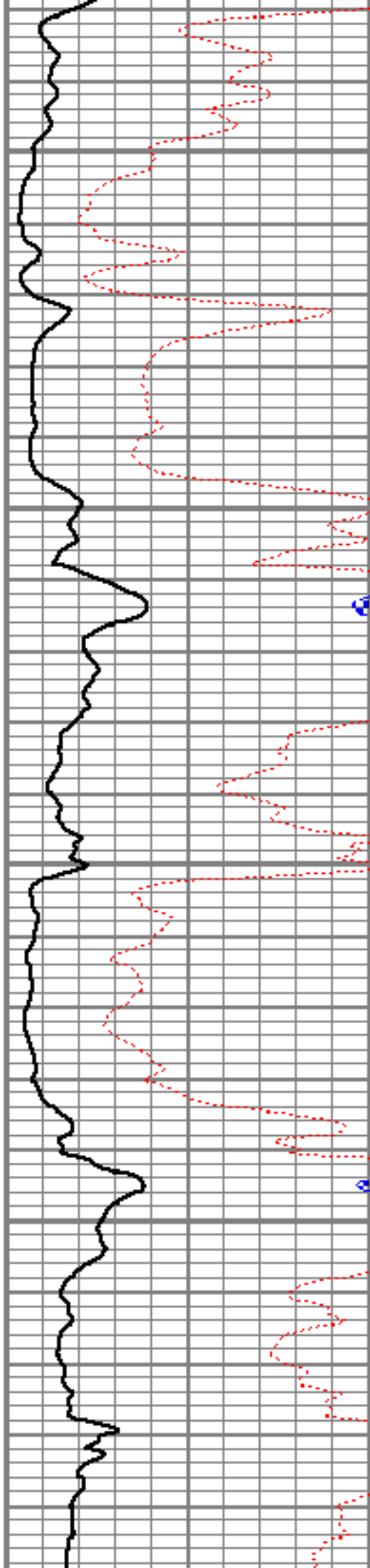


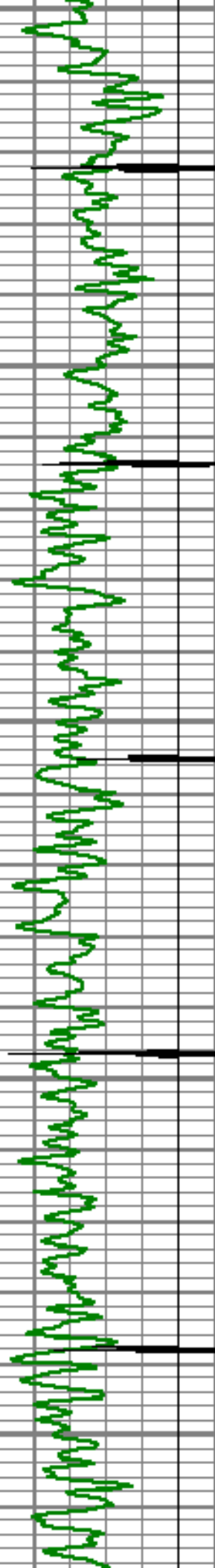
6050

6100

6150

6200





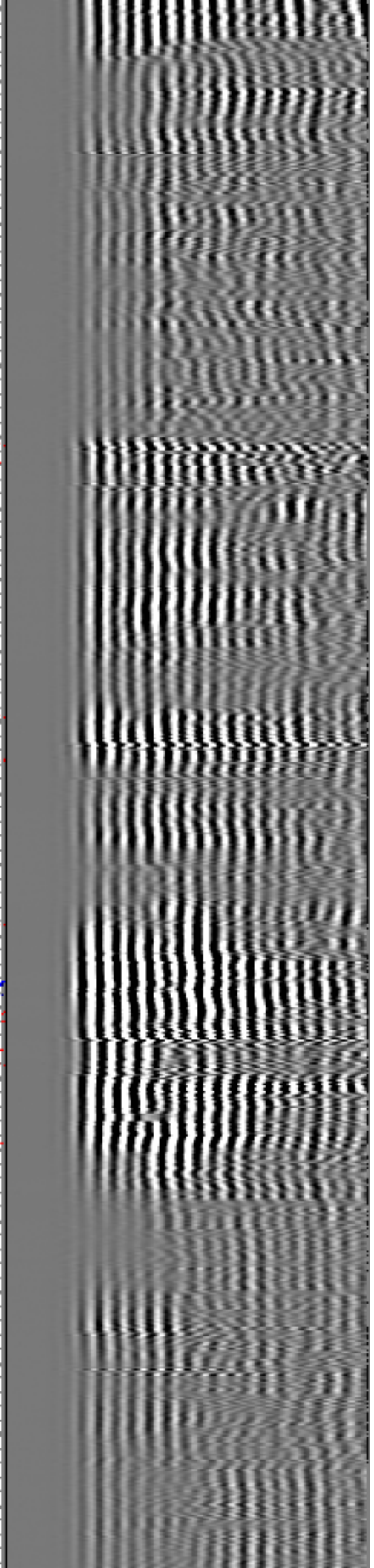
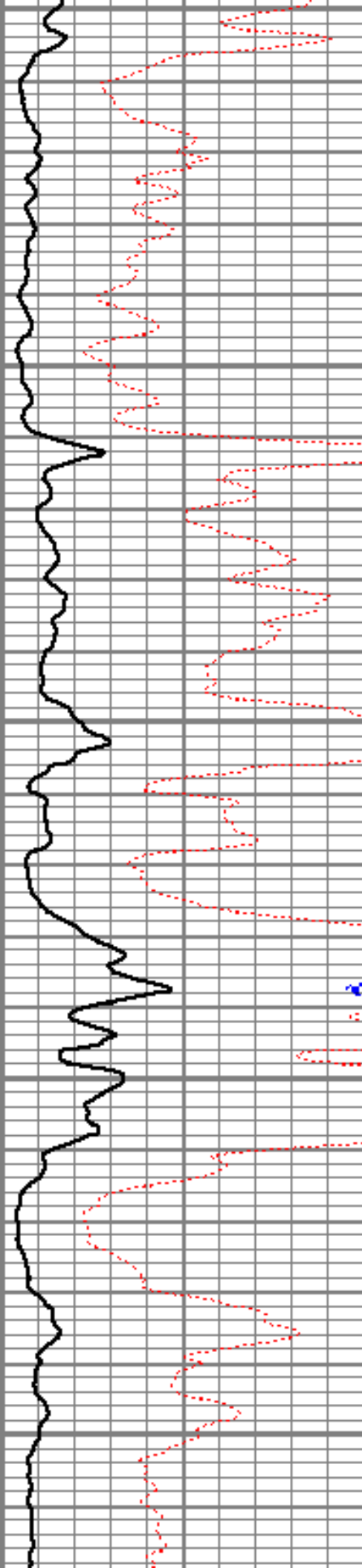
6250

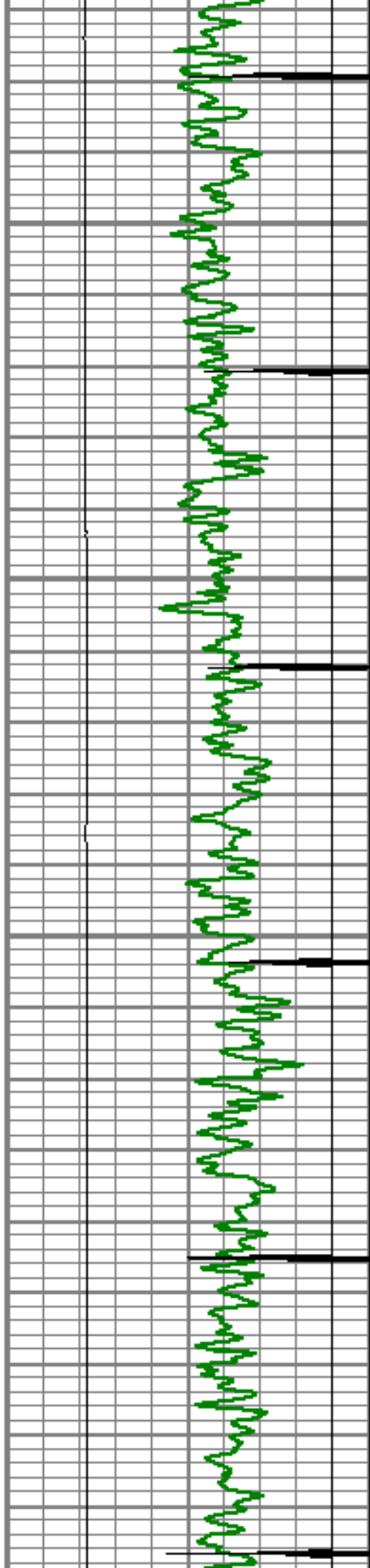
6300

6350

6400

6450



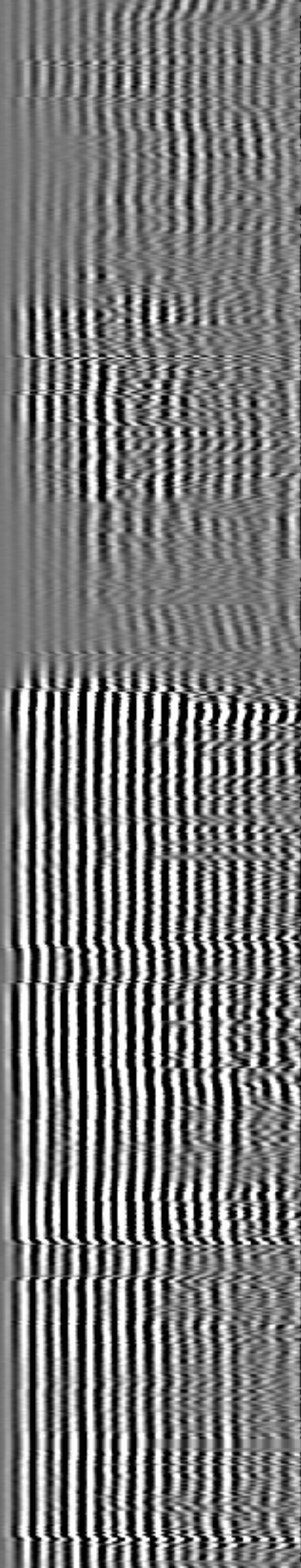
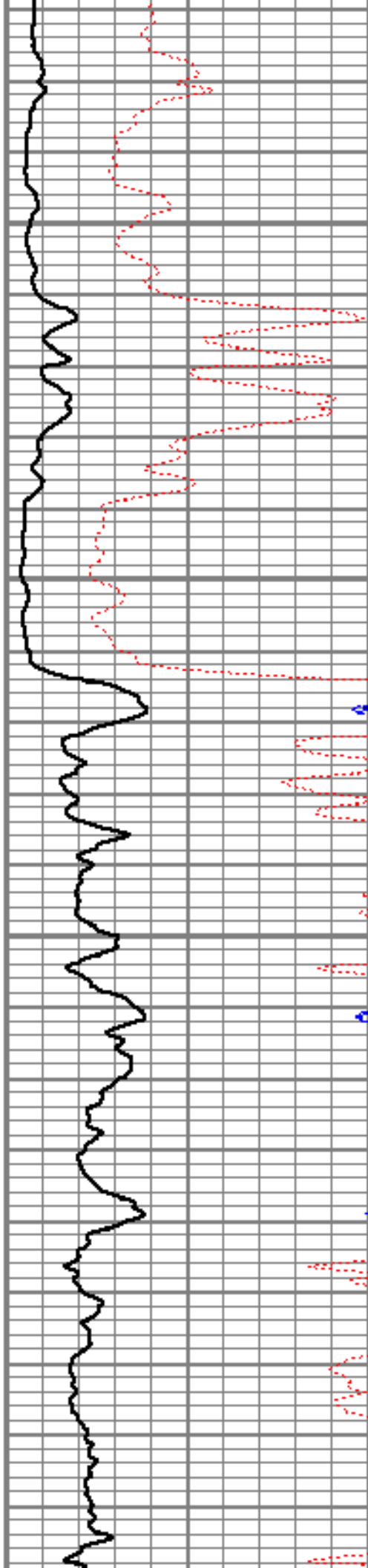


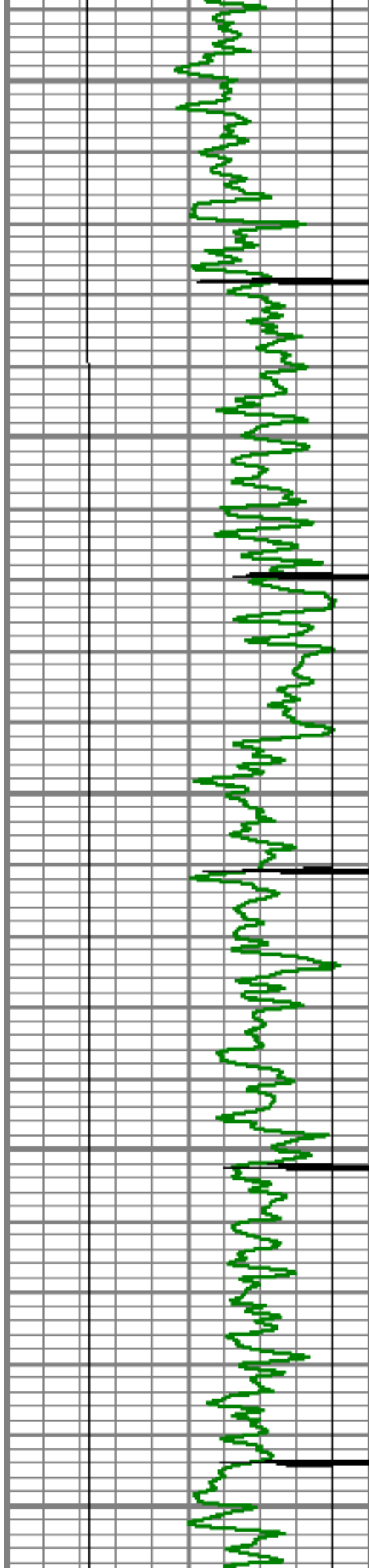
6500

6550

6600

6650





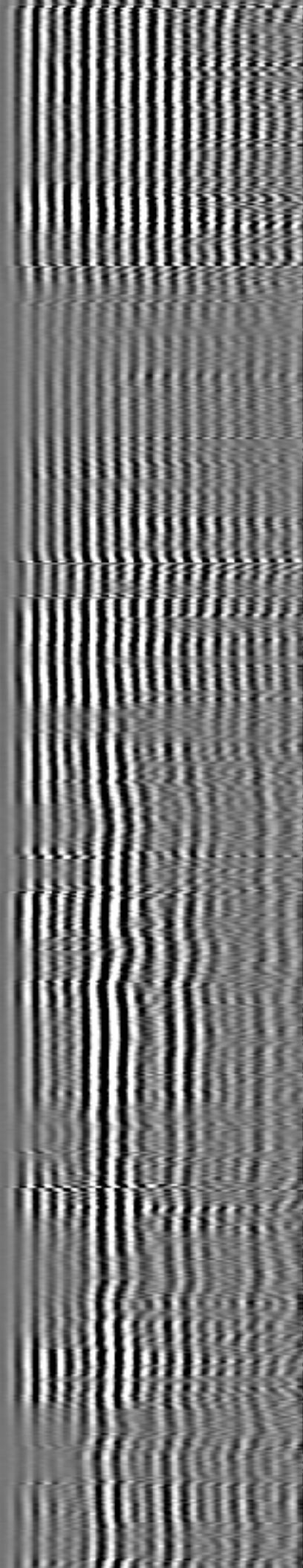
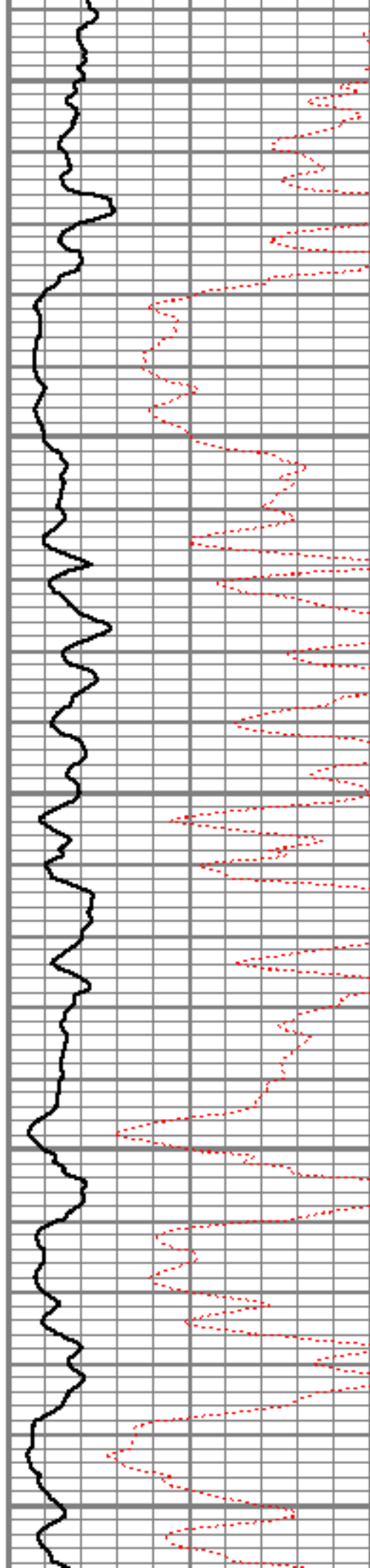
6700

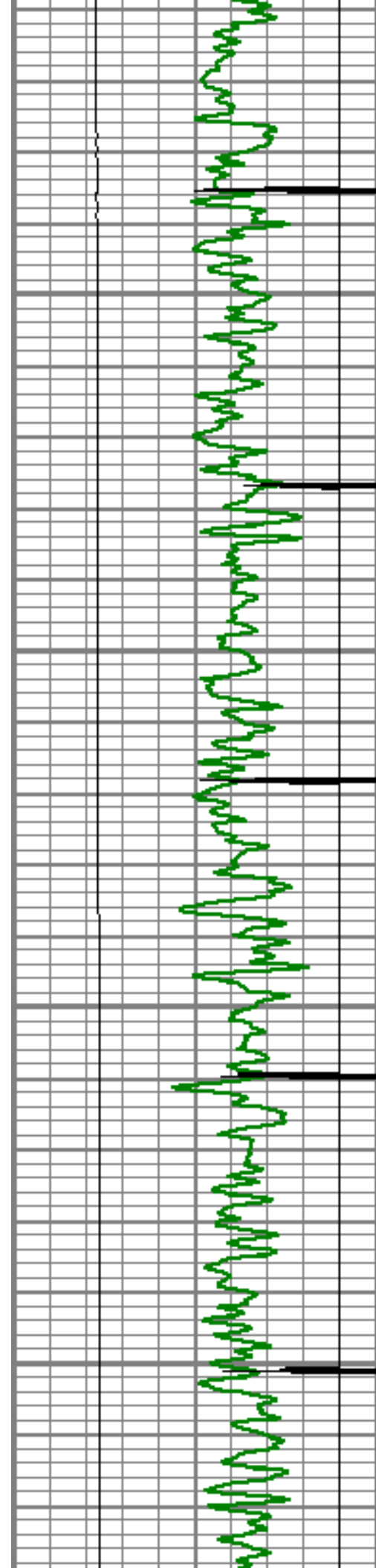
6750

6800

6850

6900



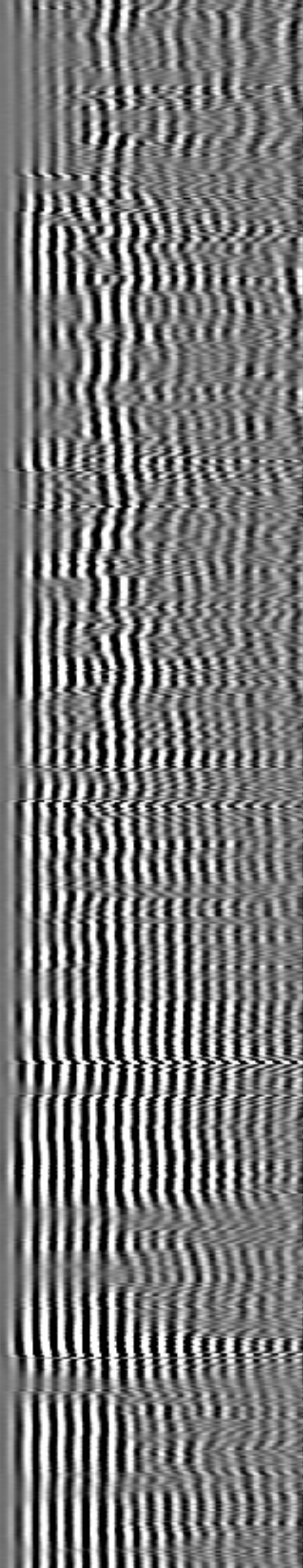
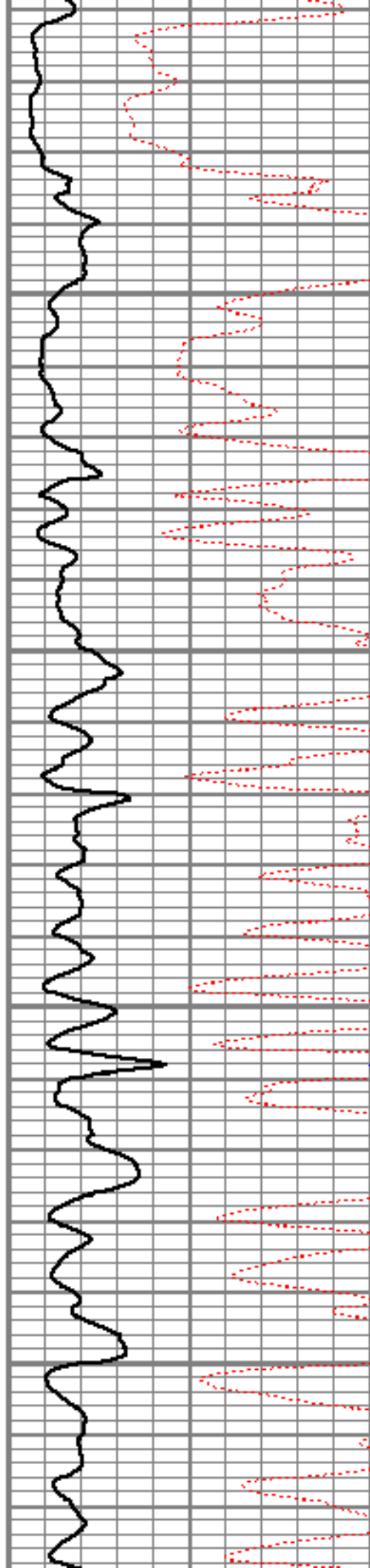


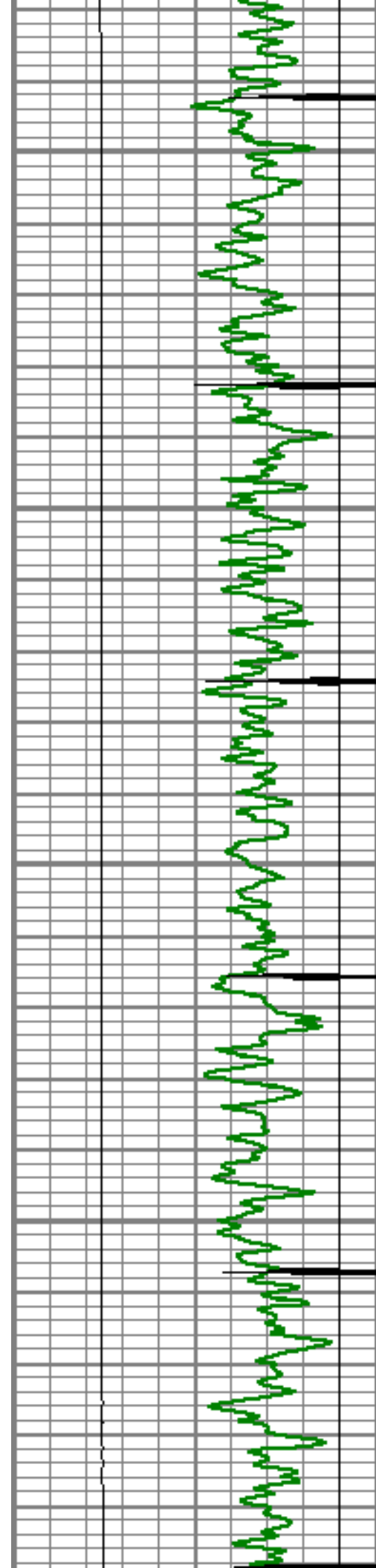
6950

7000

7050

7100



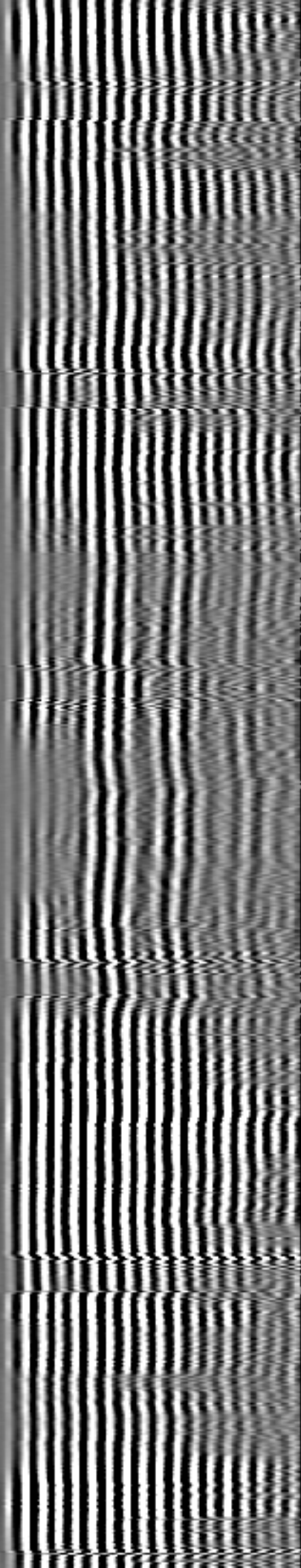
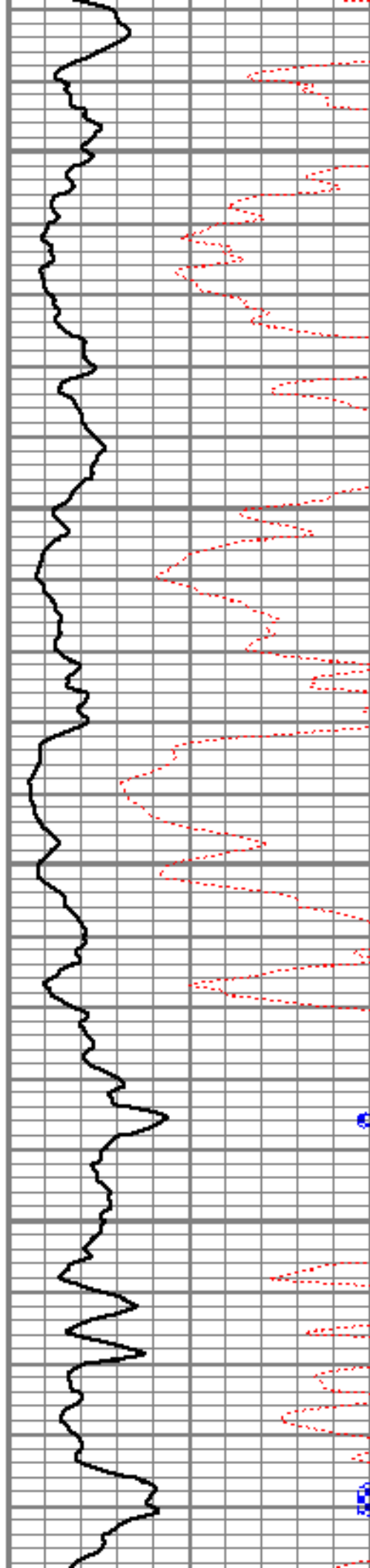


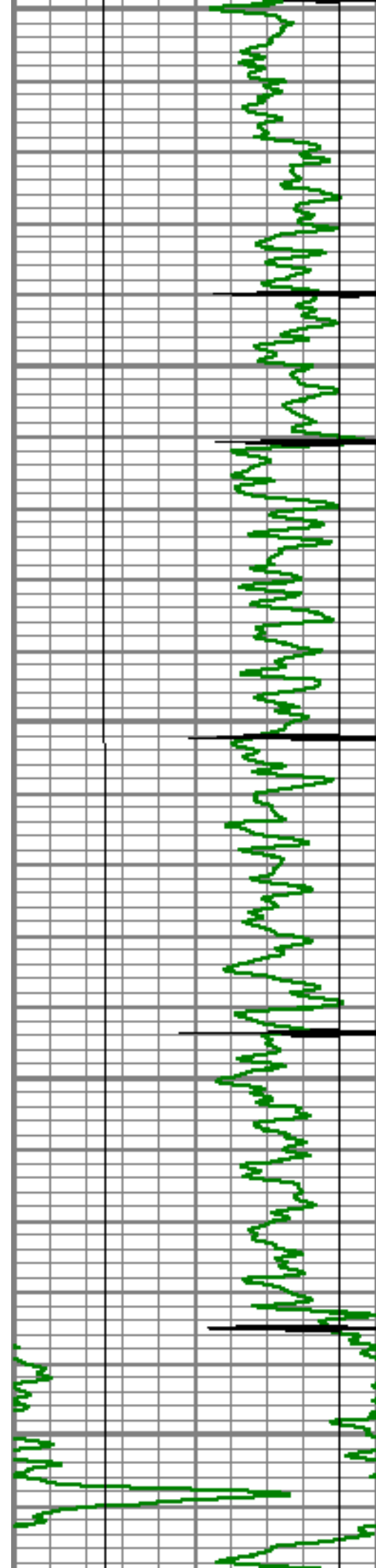
7150

7200

7250

7300





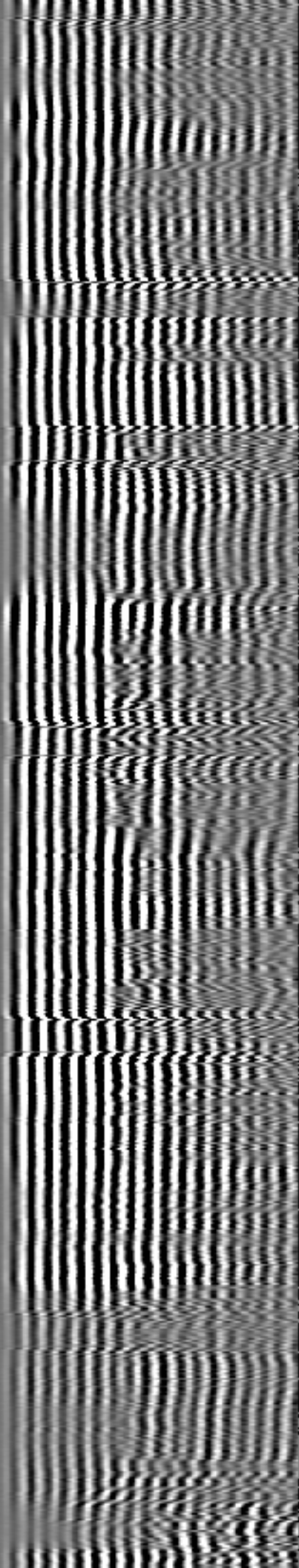
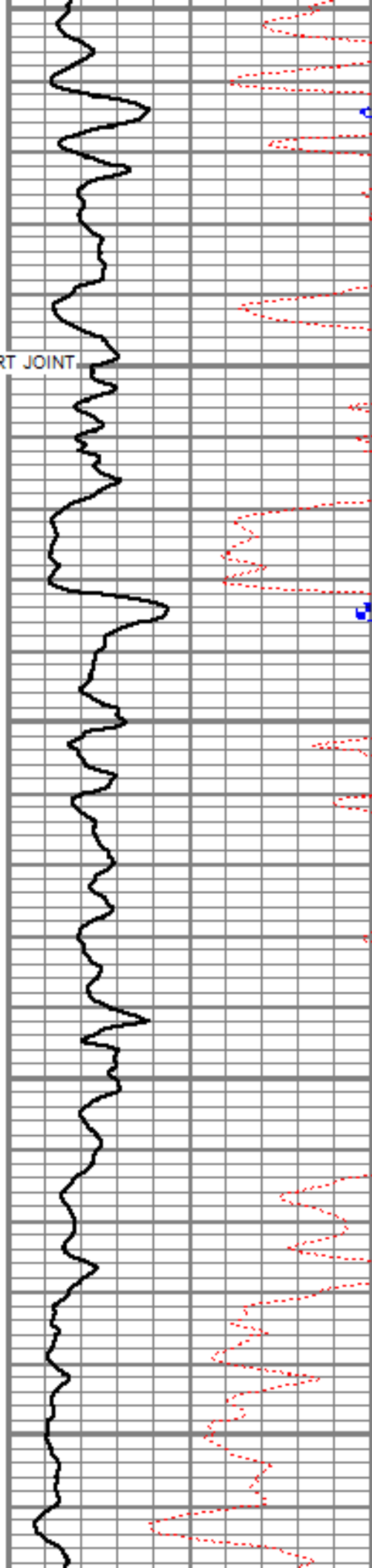
7350

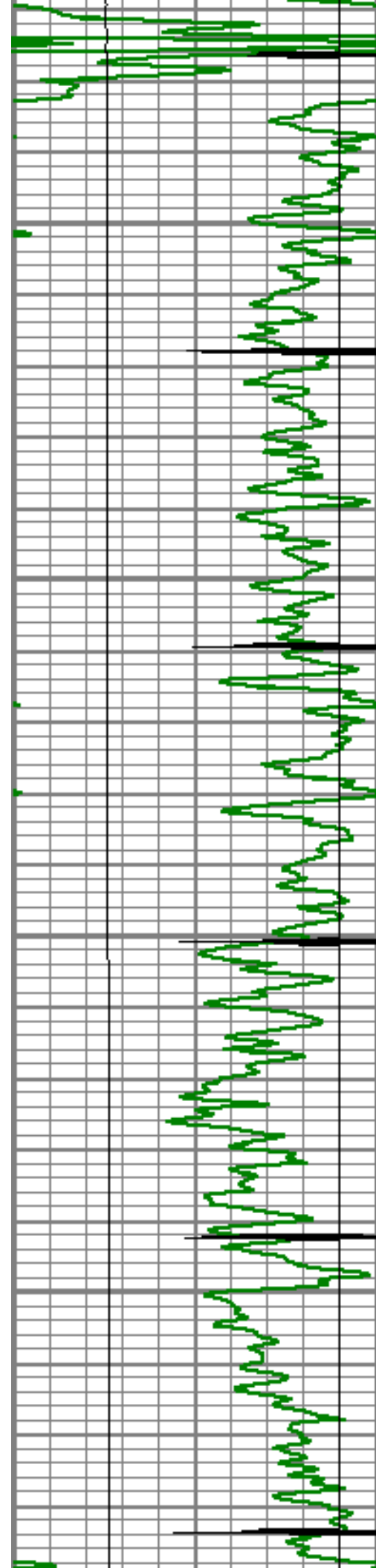
740 SHORT JOINT

7450

7500

7550



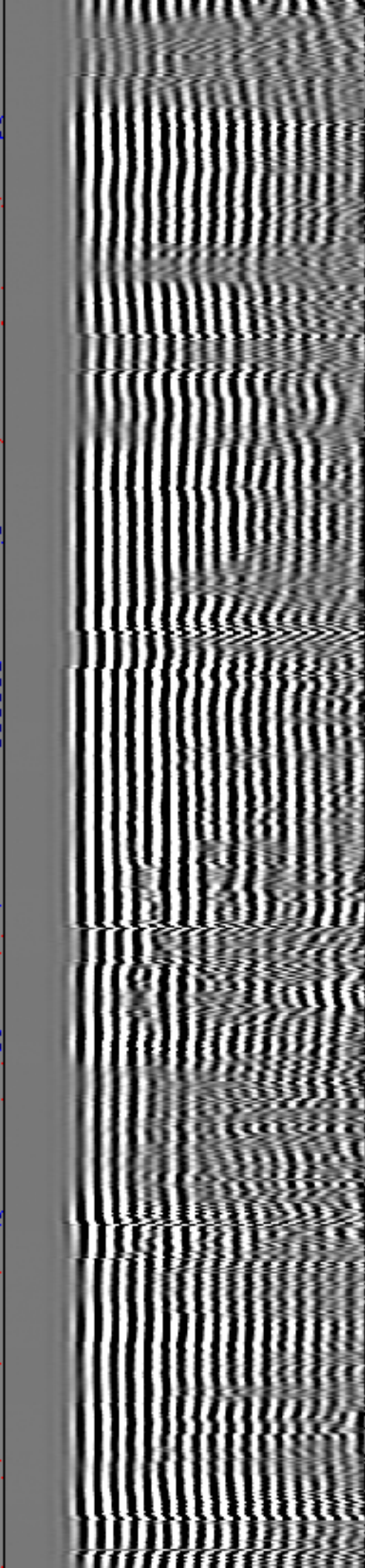
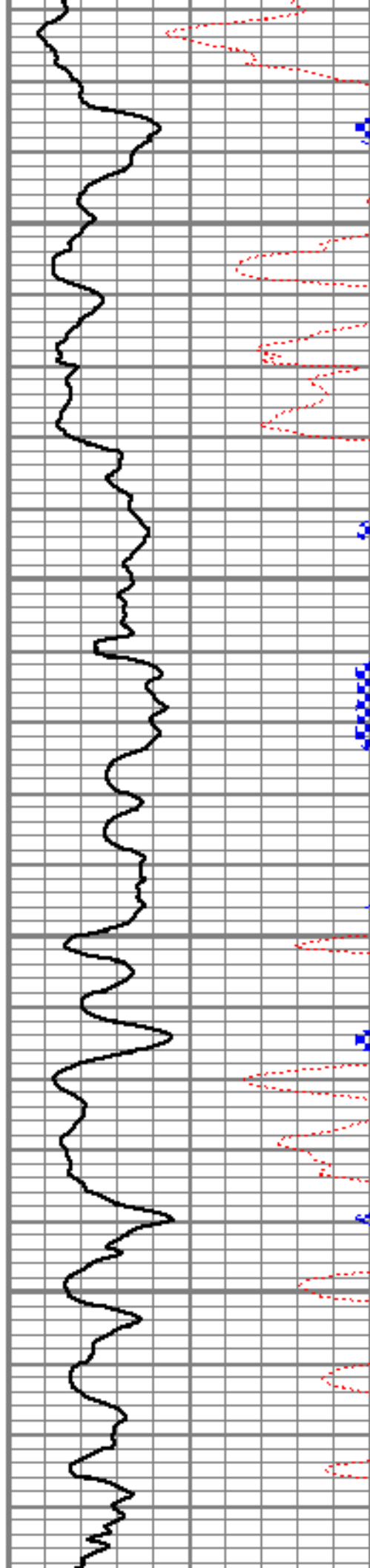


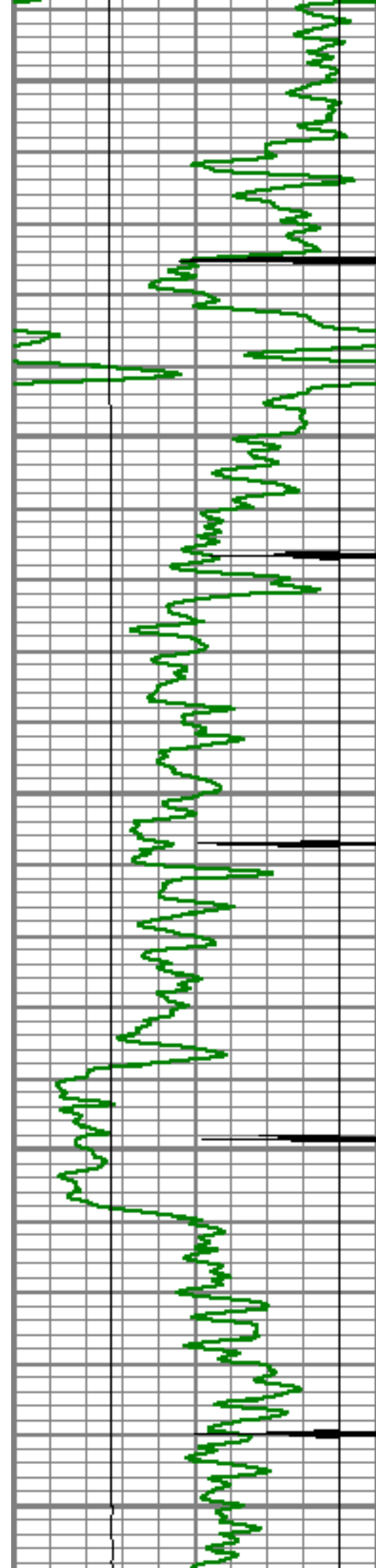
7600

7650

7700

7750





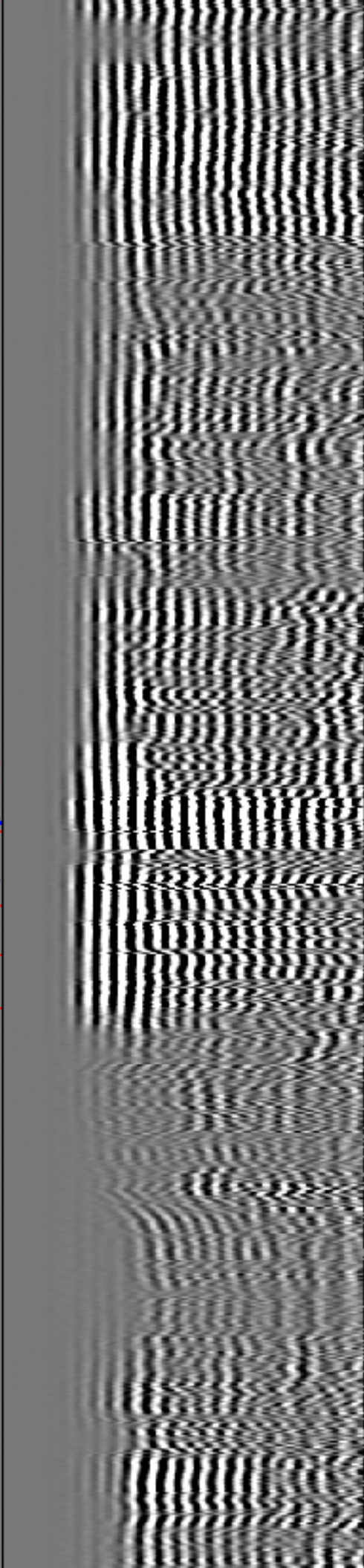
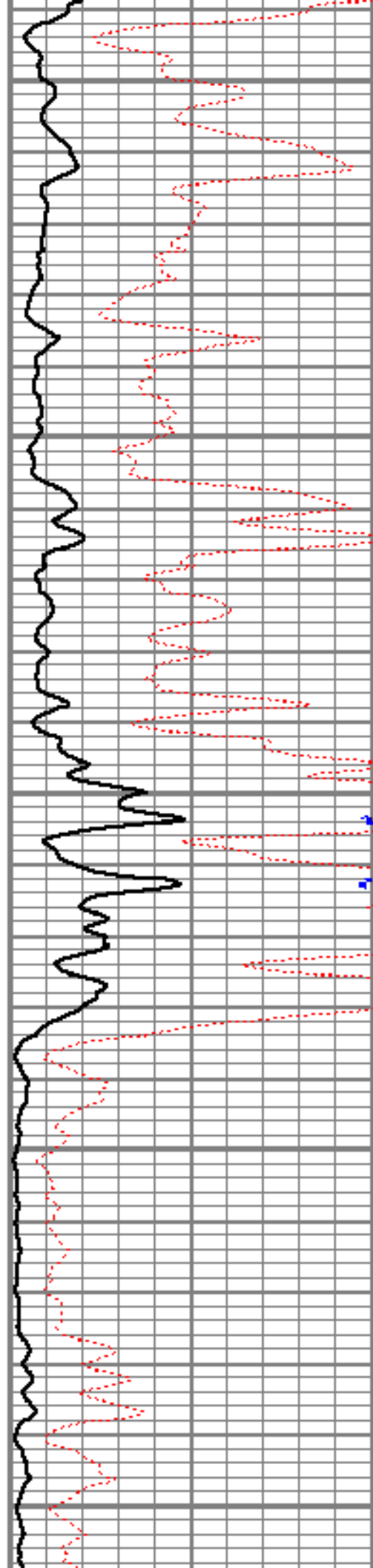
7800

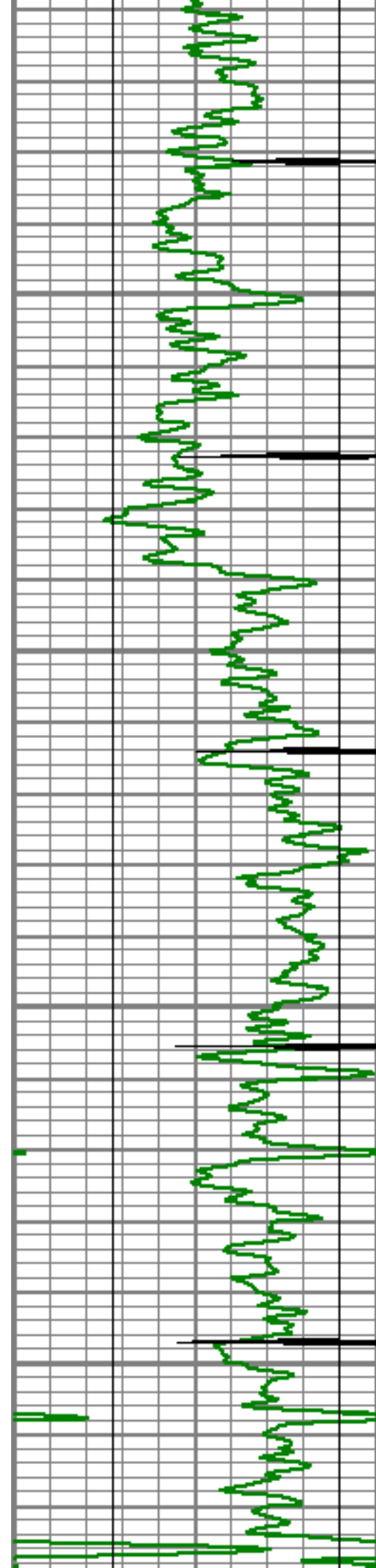
7850

7900

7950

8000



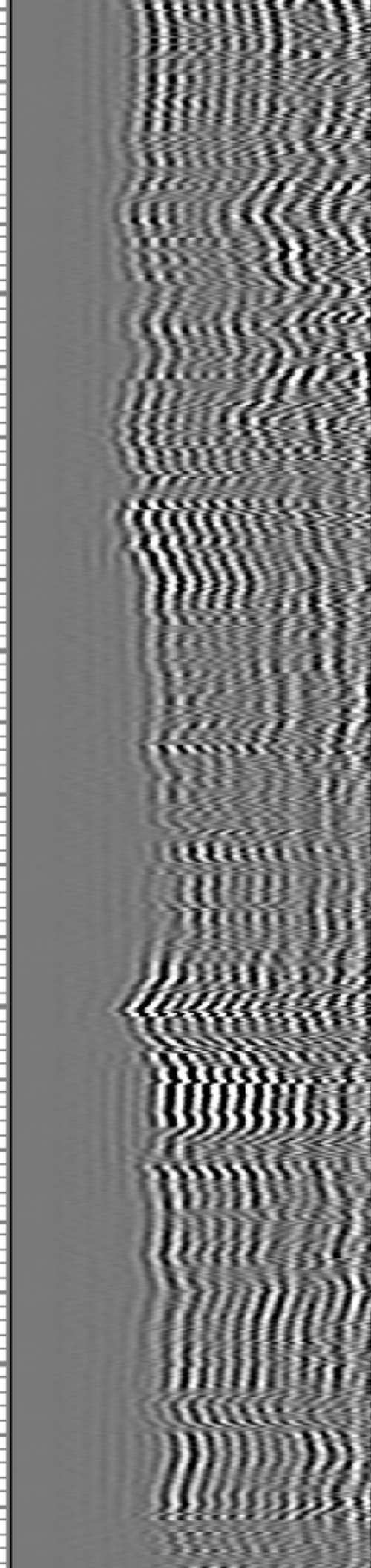


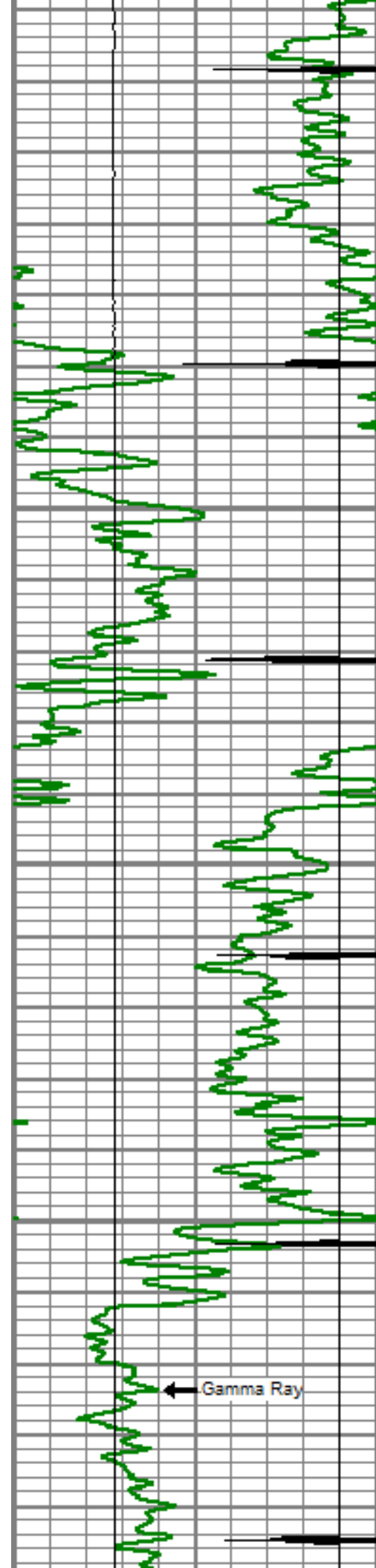
8050

8100

8150

8200





← Gamma Ray

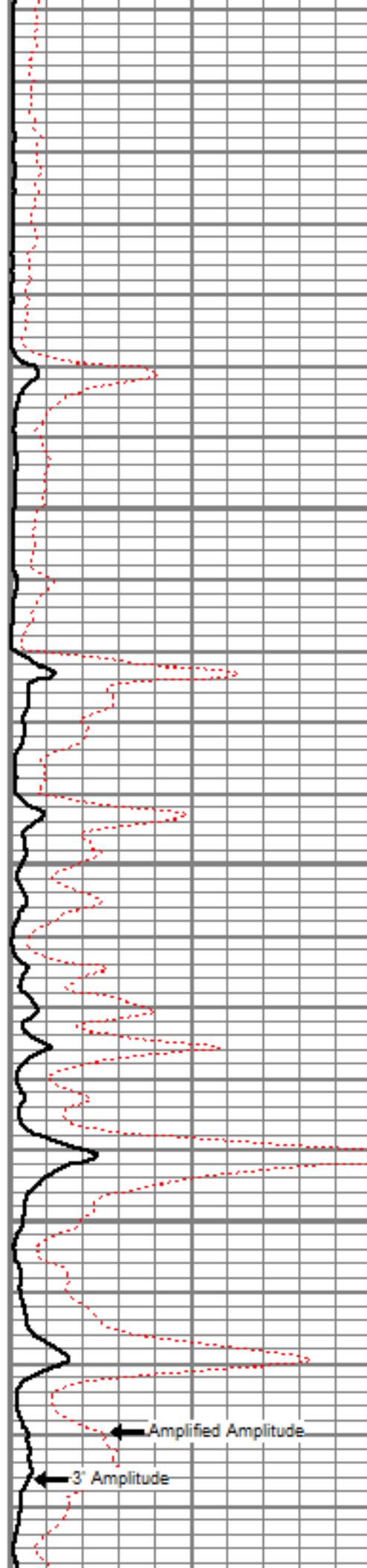
8250

8300

8350

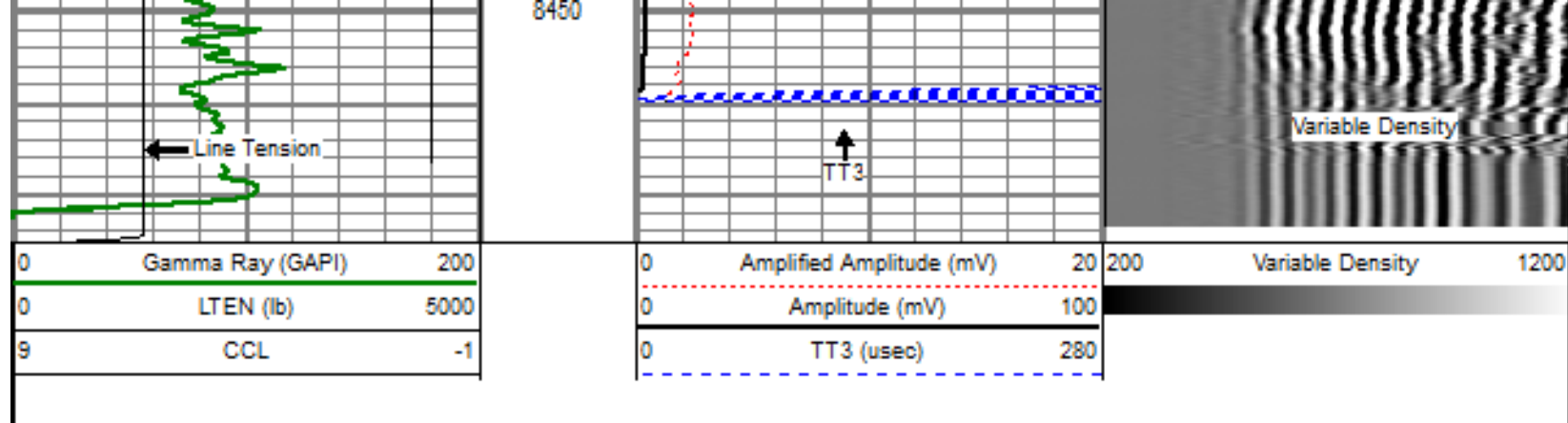
8400

← CCL

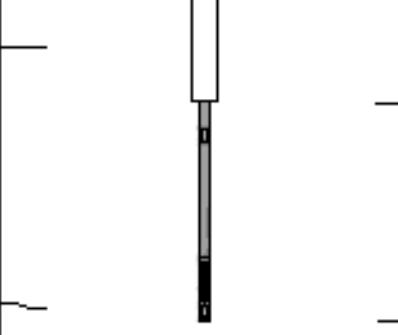


← Amplified Amplitude

← 3' Amplitude



Sensor	Offset (ft)	Schematic	Description	Len (ft)	OD (in)	Wt (lb)
			titan Titan Cable Head Go Pin.	1.02	1.44	1.50
			Centralizer-Probe (CENT-PROBE-1) Probe Bowspring Centralizer	2.88	2.75	10.00
WVF3	16.56		CBL-PRB_CBL_DIGITAL (PRB_CBL_DIG_28.77 1) Probe 2.75" Dual Receiver Bond	2.75	2.75	60.00
WVF5	15.56					
			Centralizer-Probe (CENT-PROBE-2) Probe Bowspring Centralizer	2.88	2.75	10.00
CCL	8.21		CCL-PRB_CCL_2MAG (PRB_CCL_2MAG_02.02) Probe 2 Magnet CCL	2.75	2.75	
			GR-PROBE_GR (PRB_GR_275_01) Probe stand alone Gamma Ray Tool	4.54	2.75	30.00

GR	3.63					
TEMP	0.17		TEMP-Comprobe (TEMP_CMPRB_1375) Positive pulse Temp tool	0'2.88	1.38	15.00
Dataset: bury crandell 8-2-23.db: field/well/run1/pass4.1 Total Length: 24.98 ft Total Weight: 126.50 lb O.D. 2.75 in						

	Company	ENCANA OIL & GAS (USA) INC.
	Well	BURY CRANDELL 8-2-23
	Field	WATTENBERG
	County	BROOMFIELD
	State	COLORADO