
WILLIAMS PRODUCTION RMT INC - EBUS

**SG 423-35
GRAND VALLEY
Garfield County , Colorado**

Cement Surface Casing
24-Nov-2011

Job Site Documents

The Road to Excellence Starts with Safety

Sold To #: 300721	Ship To #: 2890274	Quote #:	Sales Order #: 9054558
Customer: WILLIAMS PRODUCTION RMT INC - EBUS		Customer Rep: Geary, Scott	
Well Name: SG		Well #: 423-35	API/UWI #: 05-045-20281
Field: GRAND VALLEY	City (SAP): PARACHUTE	County/Parish: Garfield	State: Colorado
Lat: N 39.391 deg. OR N 39 deg. 23 min. 27.082 secs.		Long: W 108.083 deg. OR W -109 deg. 55 min. 0.181 secs.	
Contractor: H&P 278		Rig/Platform Name/Num: H&P 278	
Job Purpose: Cement Surface Casing			
Well Type: Development Well		Job Type: Cement Surface Casing	
Sales Person: MAYO, MARK		Srvc Supervisor: ARNOLD, EDWARD	MBU ID Emp #: 439784

Job Personnel

HES Emp Name	Exp Hrs	Emp #	HES Emp Name	Exp Hrs	Emp #	HES Emp Name	Exp Hrs	Emp #
ARNOLD, EDWARD John	5.5	439784	DOUT, JACOB J	5.5	430298	KUKUS, CHRISTOPHER A	5.5	413952

Equipment

HES Unit #	Distance-1 way	HES Unit #	Distance-1 way	HES Unit #	Distance-1 way	HES Unit #	Distance-1 way
10867322	60 mile	10897891	60 mile	11360871	60 mile	11542767	60 mile
11583933	60 mile						

Job Hours

Date	On Location Hours	Operating Hours	Date	On Location Hours	Operating Hours	Date	On Location Hours	Operating Hours
11.24.2011	5.5	2.5						

TOTAL Total is the sum of each column separately

Job				Job Times			
Formation Name				Date	Time	Time Zone	
Formation Depth (MD)	Top		Bottom	Called Out	24 - Nov - 2011	12:30	MST
Form Type		BHST		On Location	24 - Nov - 2011	16:20	MST
Job depth MD	1035. ft	Job Depth TVD	1035. ft	Job Started	24 - Nov - 2011	19:53	MST
Water Depth		Wk Ht Above Floor	3. ft	Job Completed	24 - Nov - 2011	20:58	MST
Perforation Depth (MD)	From		To	Departed Loc	24 - Nov - 2011	22:00	MST

Well Data

Description	New / Used	Max pressure psig	Size in	ID in	Weight lbm/ft	Thread	Grade	Top MD ft	Bottom MD ft	Top TVD ft	Bottom TVD ft
Open Hole				13.5				.	1035.		
Surface Casing	Unknown		9.625	9.001	32.3		H-40	.	1021.		

Sales/Rental/3rd Party (HES)

Description	Qty	Qty uom	Depth	Supplier
PLUG,CMTG,TOP,9 5/8,HWE,8.16 MIN/9.06 MA	1	EA		

Tools and Accessories

Type	Size	Qty	Make	Depth	Type	Size	Qty	Make	Depth	Type	Size	Qty	Make
Guide Shoe					Packer					Top Plug	9.625	1	HES
Float Shoe					Bridge Plug					Bottom Plug			
Float Collar					Retainer					SSR plug set			
Insert Float										Plug Container	9.625	1	HES
Stage Tool										Centralizers			

Miscellaneous Materials

Gelling Agt	Conc	Surfactant	Conc	Acid Type	Qty	Conc	%
Treatment Fld	Conc	Inhibitor	Conc	Sand Type	Size	Qty	

Fluid Data

Stage/Plug #: 1										
Fluid #	Stage Type	Fluid Name	Qty	Qty uom	Mixing Density lbm/gal	Yield ft ³ /sk	Mix Fluid Gal/sk	Rate bbl/min	Total Mix Fluid Gal/sk	

1	Water Spacer		20.00	bbl	8.34	.0	.0	4	
2	Tail Cement	VERSACEM (TM) SYSTEM (452010)	295.0	sacks	12.8	2.11	11.75	8	11.75
11.75 Gal		FRESH WATER							
3	Displacement Fluid		76.00	bbl	8.34	.0	.0	10	
Calculated Values		Pressures		Volumes					
Displacement	76.9	Shut In: Instant		Lost Returns	0	Cement Slurry	110.8	Pad	
Top Of Cement	SURFACE	5 Min		Cement Returns	38	Actual Displacement	76.9	Treatment	
Frac Gradient		15 Min		Spacers	40	Load and Breakdown		Total Job	180.4
Rates									
Circulating	RIG	Mixing	8	Displacement	10	Avg. Job	9		
Cement Left In Pipe	Amount	42.7 ft	Reason	Shoe Joint					
Frac Ring # 1 @	ID	Frac ring # 2 @	ID	Frac Ring # 3 @	ID	Frac Ring # 4 @	ID		
The Information Stated Herein Is Correct				Customer Representative Signature					

The Road to Excellence Starts with Safety

Sold To #: 300721	Ship To #: 2890274	Quote #:	Sales Order #: 9054558
Customer: WILLIAMS PRODUCTION RMT INC - EBUS	Customer Rep: Geary, Scott		
Well Name: SG	Well #: 423-35	API/UWI #: 05-045-20281	
Field: GRAND VALLEY	City (SAP): PARACHUTE	County/Parish: Garfield	State: Colorado
Legal Description:			
Lat: N 39.391 deg. OR N 39 deg. 23 min. 27.082 secs.		Long: W 108.083 deg. OR W -109 deg. 55 min. 0.181 secs.	
Contractor: H&P 278	Rig/Platform Name/Num: H&P 278		
Job Purpose: Cement Surface Casing			Ticket Amount:
Well Type: Development Well	Job Type: Cement Surface Casing		
Sales Person: MAYO, MARK	Srv Supervisor: ARNOLD, EDWARD	MBU ID Emp #: 439784	

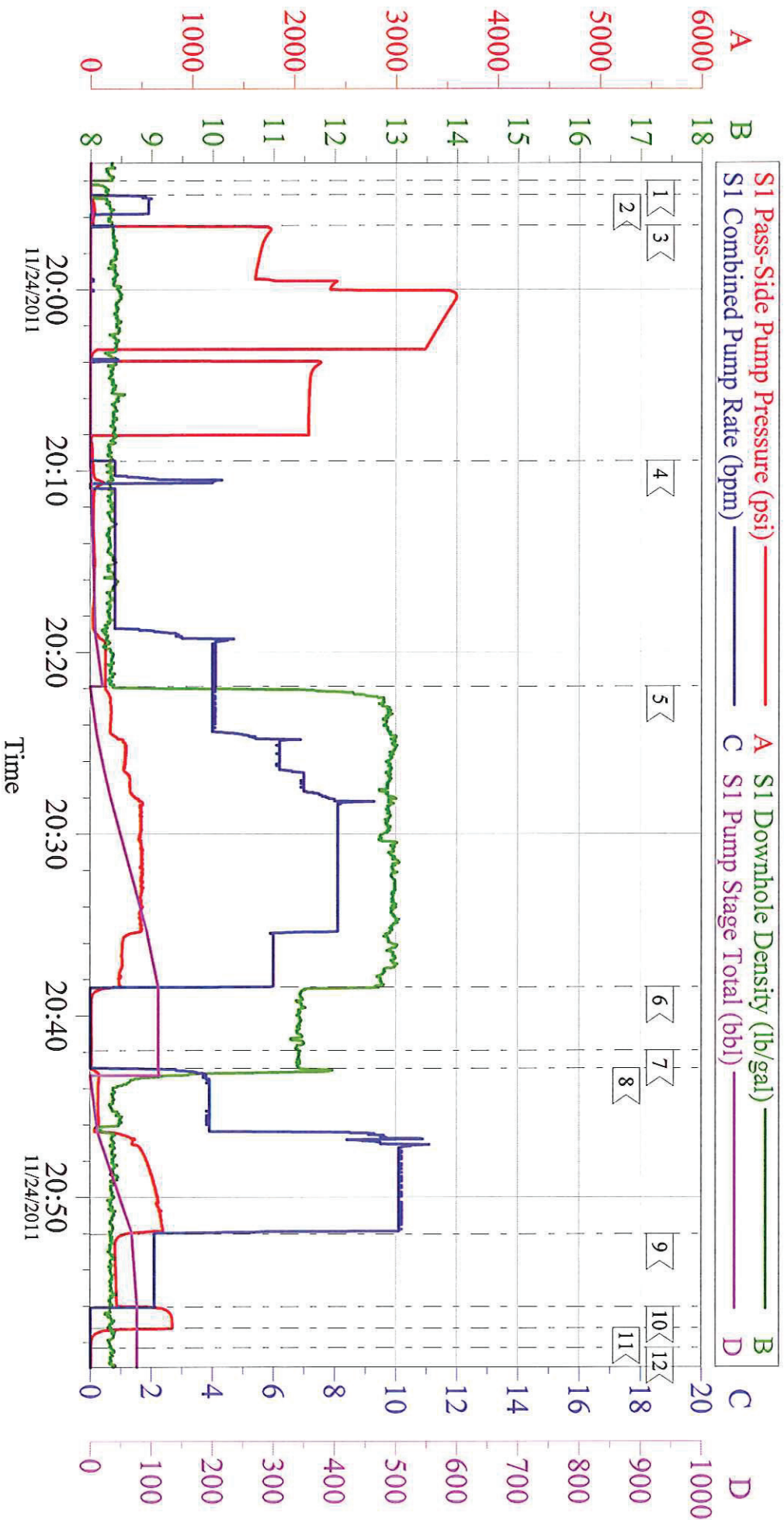
Activity Description	Date/Time	Cht #	Rate bbl/min	Volume bbl		Pressure psig		Comments
				Stage	Total	Tubing	Casing	
Call Out	11/24/2011 12:30							
Pre-Convoy Safety Meeting	11/24/2011 14:45							Including entire cement crew.
Crew Leave Yard	11/24/2011 15:00							
Arrive At Loc	11/24/2011 16:20							Rig still Running casing.
Assessment Of Location Safety Meeting	11/24/2011 16:25							Water; PH 7; KCL 250; So4 <200; Fe 0; Calcium 120; Chlorides 0; Temp 46; TDS 170.
Pre-Rig Up Safety Meeting	11/24/2011 16:30							Including entire cement crew.
Rig-Up Equipment	11/24/2011 16:35							1 Elite # 1; 1 660 bulk truck; 1 hard line to floor; 1 line to upright; 1 line to rig tank. 9.625" compact head.
Rig-Up Completed	11/24/2011 17:00							
Pre-Job Safety Meeting	11/24/2011 19:30							Including everyone on location.
Start Job	11/24/2011 19:53							TD 1035; TP 1021; SJ 42.7; OH 13.5; Casing 9.625" 32.3#; Mud 9.2 ppg.
Pump Water	11/24/2011 19:54		2	2			40.0	Fill lines with fresh water.
Test Lines	11/24/2011 19:56					2100.0		Pressure was bleeding off. Bled pressure off and started new test and got good pressure test, no leaks.
Pump Spacer 1	11/24/2011 20:09		4	20			147.0	20 BBL fresh water spacer.

Cementing Job Log

Activity Description	Date/Time	Cht #	Rate bbl/min	Volume bbl		Pressure psig		Comments
				Stage	Total	Tubing	Casing	
Pump Tail Cement	11/24/2011 20:21		8	110.8			500.0	295 sks Tail Cement, 12.8 ppg, 2.11 cf3, 11.75 gal/sk.
Shutdown	11/24/2011 20:38							
Drop Plug	11/24/2011 20:41							Plug left container.
Pump Displacement	11/24/2011 20:42		10	66.9			670.0	Fresh water displacement.
Slow Rate	11/24/2011 20:52		2	10			260.0	Slow rate 10 BBL's prior to bumping the plug.
Bump Plug	11/24/2011 20:56				76.9		800.0	Bumped plug, took 500 PSI over.
Check Floats	11/24/2011 20:57							Floats held, .5 BBL back. 38 BBL good cement to surface.
End Job	11/24/2011 20:58							
Pre-Rig Down Safety Meeting	11/24/2011 21:00							Including entire cement crew.
Rig-Down Equipment	11/24/2011 21:05							
Rig-Down Completed	11/24/2011 21:45							
Pre-Convoy Safety Meeting	11/24/2011 21:50							Including entire cement crew.
Crew Leave Location	11/24/2011 22:00							Crew leave location for Service Center or another location.
Other	11/24/2011 22:00							Thank You for using Halliburton. Ed Arnold and Crew.

WILLIAMS SG 423-35

9 5/8" Surface



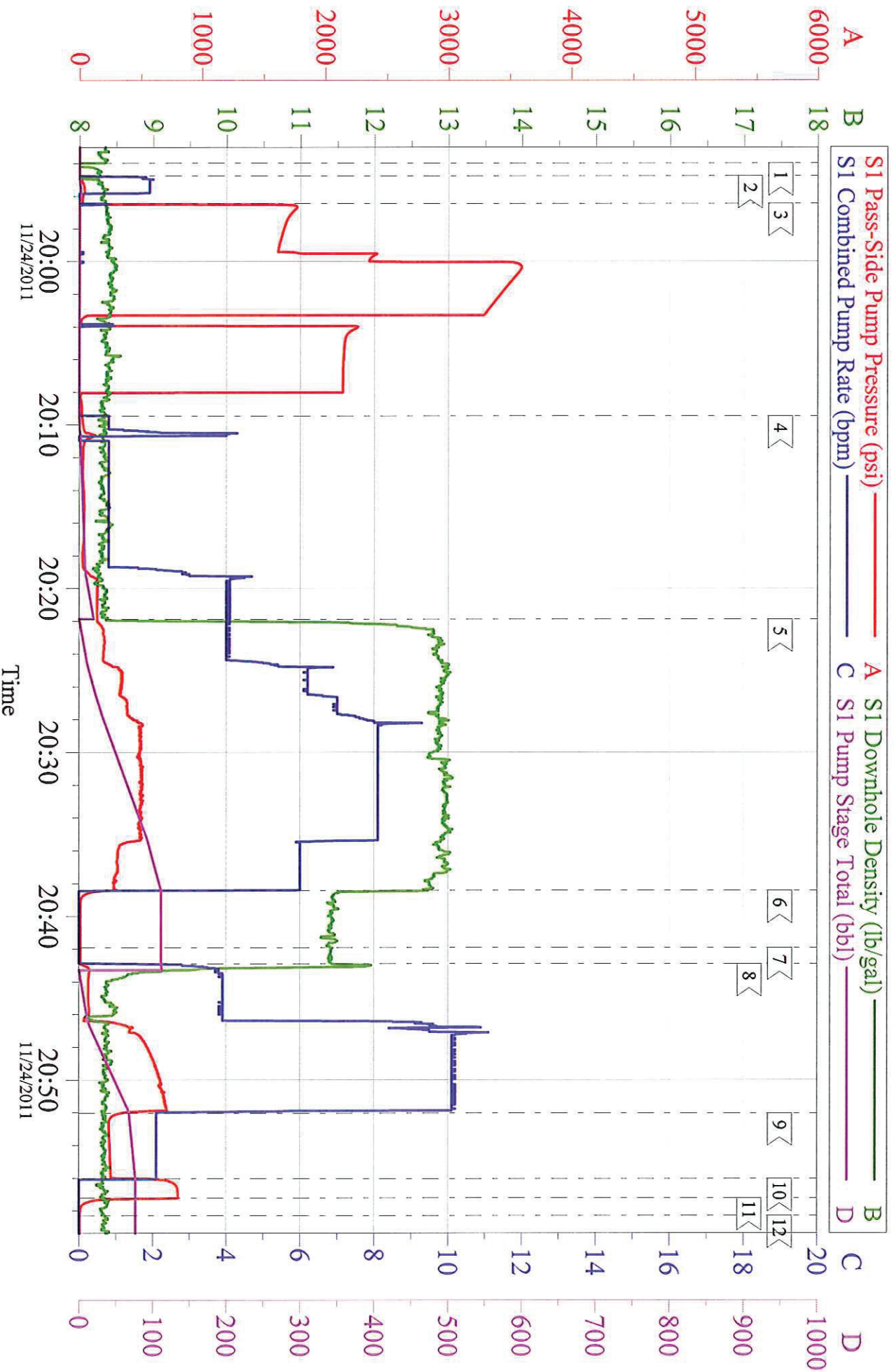
Customer: Williams
Well Description: SG 423=35
Company Rep: Scott Geary

Job Date: 24-Nov-2011
Job Type: Surface
Cement Supervisor: Ed Arnold

Sales Order #: 9054558
ADC Used: Yes
Elite #1: Jacob Dout

WILLIAMS SG 423-35

9 5/8" Surface



Customer: Williams
Well Description: SG 423=35
Company Rep: Scott Geary

Job Date: 24-Nov-2011
Job Type: Surface
Cement Supervisor: Ed Arnold

Sales Order #: 9054558
ADC Used: Yes
Elite #1: Jacob Dout