

SYNERGY RESOURCES CORPORATION
20203 HIGHWAY 60
PLATTEVILLE, Colorado

Margil
Margil 34KD

Ensign/33

Post Job Summary

Cement Production Casing

Date Prepared: 8/24/11
Version: 1

Service Supervisor: SALINAS, JOSE

Submitted by: FRY, DOMINIK

HALLIBURTON

HALLIBURTON

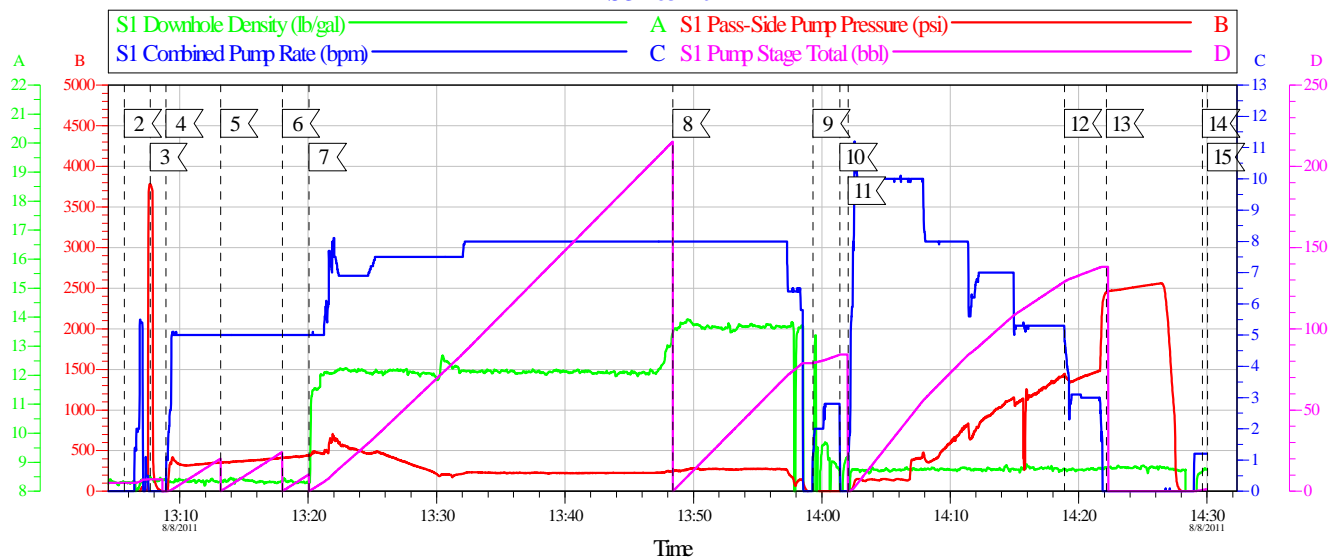
Pumping Schedule

Stage /Plug #	Fluid #	Fluid Type	Fluid Name	Surface Density lbm/gal	Avg Rate bbl/min	Surface Volume	Downhole Volume
1	1	Spacer	Water Spacer	8.33	5.00	20.0 bbl	20.0 bbl
1	2	Spacer	MUD FLUSH III	8.40	5.00	24.0 bbl	24.0 bbl
1	3	Spacer	WATER SPACER	8.30	6.00	10.0 bbl	10.0 bbl
1	4	Cement Slurry	Fillcem 12#	12.00	5.00	575.0 sacks	575.0 sacks
1	5	Cement Slurry	13.5# Fraccem	13.50	5.00	250.0 sacks	250.0 sacks
1	6	Spacer	ClaFix III Water Displacement	8.33	7.00	10.0 Gal	10.0 Gal

HALLIBURTON

Data Acquisition

SYNERGY RESOURCES
MARGIL 34KD 4.5 PRODUCTION
SO# 8377017



Global Event Log					
Intersection	SPPP	Intersection	SPPP	Intersection	SPPP
2 Start Job	13:05:40 -9.696	3 Test Lines	13:07:41 3781	4 Pump Spacer 1	13:08:56 -2.416
5 Pump Spacer 2	13:13:10 351.3	6 Pump Spacer 1	13:17:59 413.3	7 Pump Lead Cement	13:20:04 443.3
8 Pump Tail Cement	13:48:23 249.3	9 Clean Lines	13:59:19 -10.70	10 Drop Top Plug	14:01:25 0.811
11 Pump Displacement	14:02:04 -12.70	12 Slow Rate	14:18:54 1441	13 Bump Plug	14:22:09 2449
14 End Job	14:29:39 -8.696	15 Ending Job	14:30:02 -9.696		

Customer:	Job Date: 08-Aug-2011	Sales Order #: 8377017
Well Description:	Job Type:	ADC Used:
Company Rep:	Cement Supervisor:	Elite #:

HALLIBURTON
OptiCemv6.49
08-Aug-11 14:30

HALLIBURTON

Service Supervisor Reports

Job Log

Date/Time	Chart #	Activity Code	Pump Rate	Cum Vol	Pump		Pressure (psig)	Comments
08/08/2011 05:00		Call Out						
08/08/2011 08:00		Pre-Convoy Safety Meeting						
08/08/2011 08:30		Arrive at Location from Service Center						
08/08/2011 11:30		Pre-Rig Up Safety Meeting						
08/08/2011 11:45		Rig-Up Equipment						
08/08/2011 12:45		Pre-Job Safety Meeting						
08/08/2011 13:05		Test Lines	2	2			3000.0	TEST LINES WITH FRESH WATER
08/08/2011 13:07		Pump Spacer	6	20			300.0	PUMP WATER SPACER @ 8.3 PPG
08/08/2011 13:13		Pump Spacer 1	6	24			351.0	PUMP MUDDLUSH SPACER @ 8.3 PPG
08/08/2011 13:17		Pump Spacer 2	6	10			413.0	PUMP WATER SPACER @ 8.3 PPG
08/08/2011 13:20		Pump Lead Cement	7	198			443.0	PUMP 575 SKS OF FILLCEM @ 12.0 PPG (198.6 BBL)
08/08/2011 13:48		Pump Tail Cement	7	75			249.0	PUMP 250 SKS OF FRACCEM @ 13.5 PPG (75.2 BBL)
08/08/2011 13:59		Clean Lines	5	10			75.0	WASH LINES WITH FRESH WATER
08/08/2011 14:02		Drop Top Plug	0	0			.0	PLUG LEFT CMT HEAD
08/08/2011 14:03		Pump Displacement	7				117.0	PUMP BBL OF FRESH WATER FOR DISPLACEMENT
08/08/2011 14:18		Other	3	120			1441.0	SLOW RATE DOWN TO BUMP PLUG
08/08/2011 14:22		Bump Plug	3	126			2450.0	BUMP PLUG WITH 1000 PSI OVER
08/08/2011 14:25		Release Casing Pressure	0	0			.0	RELEASE PSI
08/08/2011 14:30		Check Floats	0	0			.0	CHECK FLOATS HELD GOOD
08/08/2011 14:31		End Job						
08/08/2011 14:35		Pre-Rig Down Safety Meeting						
08/08/2011 14:40		Rig-Down Equipment						
08/08/2011 15:30		Depart Location Safety Meeting						
08/08/2011 15:45		Depart Location for Service Center or Other Site						

HALLIBURTON

The Road to Excellence Starts with Safety

Sold To #: 359915	Ship To #: 2870551	Quote #:	Sales Order #: 8377017
Customer: SYNERGY RESOURCES CORPORATION		Customer Rep:	
Well Name: Margil		Well #: 34KD	API/UWI #: 05-123-33834
Field:	City (SAP): MEAD	County/Parish: Weld	State: Colorado
Contractor: Ensign		Rig/Platform Name/Num: 33	
Job Purpose: Cement Production Casing			
Well Type: Development Well		Job Type: Cement Production Casing	
Sales Person: THEIS, MATTHEW		Srvc Supervisor: SALINAS, JOSE	MBU ID Emp #: 100319

Job Personnel

HES Emp Name	Exp Hrs	Emp #	HES Emp Name	Exp Hrs	Emp #	HES Emp Name	Exp Hrs	Emp #
AARON, WESLEY J		403606	BANUELOS, GUADALUPE		372277	CARPENTER, JACOB Paul		499500
HERNDON, SCOTT E		485448	OTERI, VAUGHN Steeves		443828	SALINAS, JOSE R		100319

Equipment

HES Unit #	Distance-1 way	HES Unit #	Distance-1 way	HES Unit #	Distance-1 way	HES Unit #	Distance-1 way
10246780C	30 mile	11106651	30 mile	11527037	30 mile	11562544C	30 mile
11562562	30 mile	11605597	30 mile	11667703C	30 mile		

Job Hours

Date	On Location Hours	Operating Hours	Date	On Location Hours	Operating Hours	Date	On Location Hours	Operating Hours
TOTAL			Total is the sum of each column separately					

Job

Formation Name	Formation Depth (MD)	Top	Bottom	Form Type	Job depth MD	Job Depth TVD	Wk Ht Above Floor	Water Depth	Perforation Depth (MD)	From	To	Deparated Loc
				BHST	7973. ft	7973. ft	3. ft					

Job Times

Date	Time	Time Zone
08 - Aug - 2011	05:00	MST
08 - Aug - 2011	08:30	MST
08 - Aug - 2011	13:00	MST
08 - Aug - 2011	14:25	MST
02 - Aug - 2011	15:45	MST

Well Data

Description	New / Used	Max pressure psig	Size in	ID in	Weight lbm/ft	Thread	Grade	Top MD ft	Bottom MD ft	Top TVD ft	Bottom TVD ft
Open Hole				7.875				350.	7973.	.	.
Production Casing	New		4.5	4.	11.6			.	7973.		
Surface Casing	Used		8.625	8.097	24.		J-55	.	650.	.	.

Sales/Rental/3rd Party (HES)

Description	Qty	Qty uom	Depth	Supplier
SHOE,FLT,4-1/2 8RD,2-3/4 SSII	1	EA		
CLR,FLT,4-1/2 8RD,9.5-13.5PPF,2-3/4	1	EA		
CENTRALIZER ASSY - API - 4-1/2 CSG X	36	EA		
CLAMP - LIMIT - 4-1/2 - HINGED -	1	EA		
KIT,HALL WELD-A	1	EA		
PLUG ASSY - 3W LATCHDOWN - 4-1/2 IN	1	EA		
Description	Qty	Qty uom	Depth	Supplier
BAFFLE ASSY - 4-1/2 8RD LATCHDOWN PLUG	1	EA		

Tools and Accessories

HALLIBURTON

Type	Size	Qty	Make	Depth	Type	Size	Qty	Make	Depth	Type	Size	Qty	Make
Guide Shoe					Packer					Top Plug			
Float Shoe					Bridge Plug					Bottom Plug			
Float Collar					Retainer					SSR plug set			
Insert Float										Plug Container			
Stage Tool										Centralizers			

Miscellaneous Materials

Gelling Agt		Conc		Surfactant		Conc		Acid Type		Qty		Conc	%
Treatment Fld		Conc		Inhibitor		Conc		Sand Type		Size		Qty	

Fluid Data

Stage/Plug #: 1

Fluid #	Stage Type	Fluid Name	Qty	Qty uom	Mixing Density lbm/gal	Yield ft3/sk	Mix Fluid Gal/sk	Rate bbl/min	Total Mix Fluid Gal/sk
1	Water Spacer		20.00	bbl	8.33	.0	.0	5.0	
2	MUD FLUSH III	MUD FLUSH III - SBM (528788)	24.00	bbl	8.4	.0	.0	5.0	
3	WATER SPACER		10.00	bbl	8.3	.0	.0	6.0	
4	Fillcem 12#	EXTENDACEM (TM) SYSTEM (452981)	575.0	sacks	12.	1.94	10.42	5.0	10.42
	0.1 %	SUPER CBL, 50 LB PAIL (100003668)							
	10.42 Gal	FRESH WATER							
5	13.5# Fraccem	FRACCEN (TM) SYSTEM (452963)	250.0	sacks	13.5	1.69	8.04	5.0	8.04
	8.04 Gal	FRESH WATER							
6	ClaFix III Water Displacement		10.00	Gal	8.33	.0	.0	7.0	

Calculated Values

Pressures

Volumes

Displacement		Shut In: Instant		Lost Returns		Cement Slurry		Pad	
Top Of Cement		5 Min		Cement Returns		Actual Displacement		Treatment	
Frac Gradient		15 Min		Spacers		Load and Breakdown		Total Job	

Rates

Circulating		Mixing		Displacement		Avg. Job	
Cement Left In Pipe	Amount	14 ft	Reason	Shoe Joint			
Frac Ring # 1 @	ID	Frac ring # 2 @	ID	Frac Ring # 3 @	ID	Frac Ring # 4 @	ID

The Information Stated Herein Is Correct	Customer Representative Signature
--	-----------------------------------