

LEGEND:

PROPOSED LOCATION



Encana OIL & GAS (USA) INC.

WELL PAD H23 4101

SECTION 23, T4S, R101W, 6th P.M.

SE 1/4 NE 1/4

SHEET 8 OF 11



Uintah Engineering & Land Surveying
 85 South 200 East Vernal, Utah 84078
 (435) 789-1017 * FAX (435) 789-1813

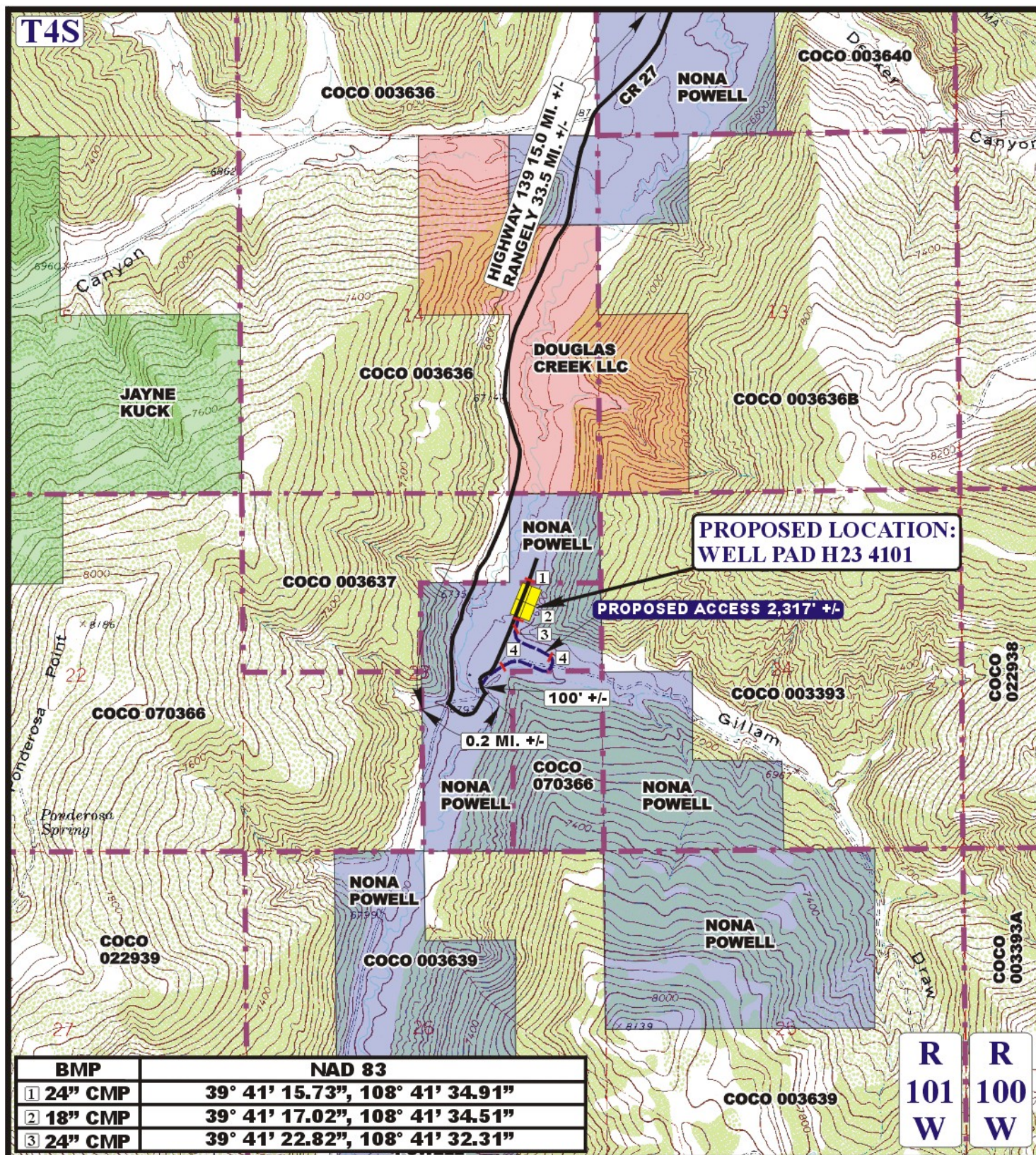
**ACCESS ROAD
MAP**

02 21 12
 MONTH DAY YEAR

SCALE: 1:100,000 DRAWN BY: J.L.G. REVISED: 00-00-00



T4S



BMP	NAD 83
① 24" CMP	39° 41' 15.73", 108° 41' 34.91"
② 18" CMP	39° 41' 17.02", 108° 41' 34.51"
③ 24" CMP	39° 41' 22.82", 108° 41' 32.31"

R
101
W

R
100
W

LEGEND:

- EXISTING ROAD
- - - PROPOSED ACCESS ROAD
- ④ CATTLE GUARD REQUIRED



Encana OIL & GAS (USA) INC.

WELL PAD H23 4101
SECTION 23, T4S, R101W, 6th P.M.
SE 1/4 NE 1/4

SHEET 9 OF 11



Uintah Engineering & Land Surveying
85 South 200 East Vernal, Utah 84078
(435) 789-1017 * FAX (435) 789-1813

ACCESS ROAD
MAP

02 **21** **12**
MONTH DAY YEAR

SCALE: 1" = 2000' DRAWN BY: J.L.G. REVISED: 03-12-12

B
TOPO

Encana OIL & GAS (USA) INC.
WELL PAD H23 4101
SECTION 23, T4S, R101W, 6th P.M.

PROCEED IN AN EASTERLY DIRECTION FROM RANGELY COLORADO ON HIGHWAY 64 APPROXIMATELY 1.4 MILES TO THE JUNCTION OF THIS ROAD AND HIGHWAY 139 TO THE SOUTH; TURN RIGHT AND PROCEED IN A SOUTHERLY DIRECTION APPROXIMATELY 17.1 MILES TO THE JUNCTION OF THIS ROAD AND COUNTY ROAD 27 TO THE SOUTHEAST; TURN LEFT AND PROCEED IN A SOUTHEASTERLY, THEN SOUTHWESTERLY DIRECTION APPROXIMATELY 15.0 MILES TO THE JUNCTION OF THIS ROAD AND AN EXISTING ROAD TO THE SOUTHEAST; TURN LEFT AND PROCEED IN A SOUTHEASTERLY, THEN NORTHEASTERLY DIRECTION APPROXIMATELY 0.2 MILES TO THE JUNCTION OF THIS ROAD AND AN EXISTING ROAD TO THE NORTHWEST; TURN LEFT AND PROCEED IN A NORTHWESTERLY DIRECTION APPROXIMATELY 100' TO THE BEGINNING OF THE PROPOSED ACCESS ROAD TO THE NORTHEAST; FOLLOW ROAD FLAGS IN A NORTHEASTERLY, THEN SOUTHEASTERLY, THEN NORTHWESTERLY DIRECTION APPROXIMATELY 2,317' TO THE PROPOSED LOCATION.

TOTAL DISTANCE FROM RANGELY, COLORADO TO THE PROPOSED WELL LOCATION IS APPROXIMATELY 34.2 MILES.