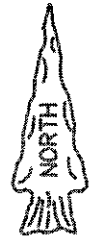
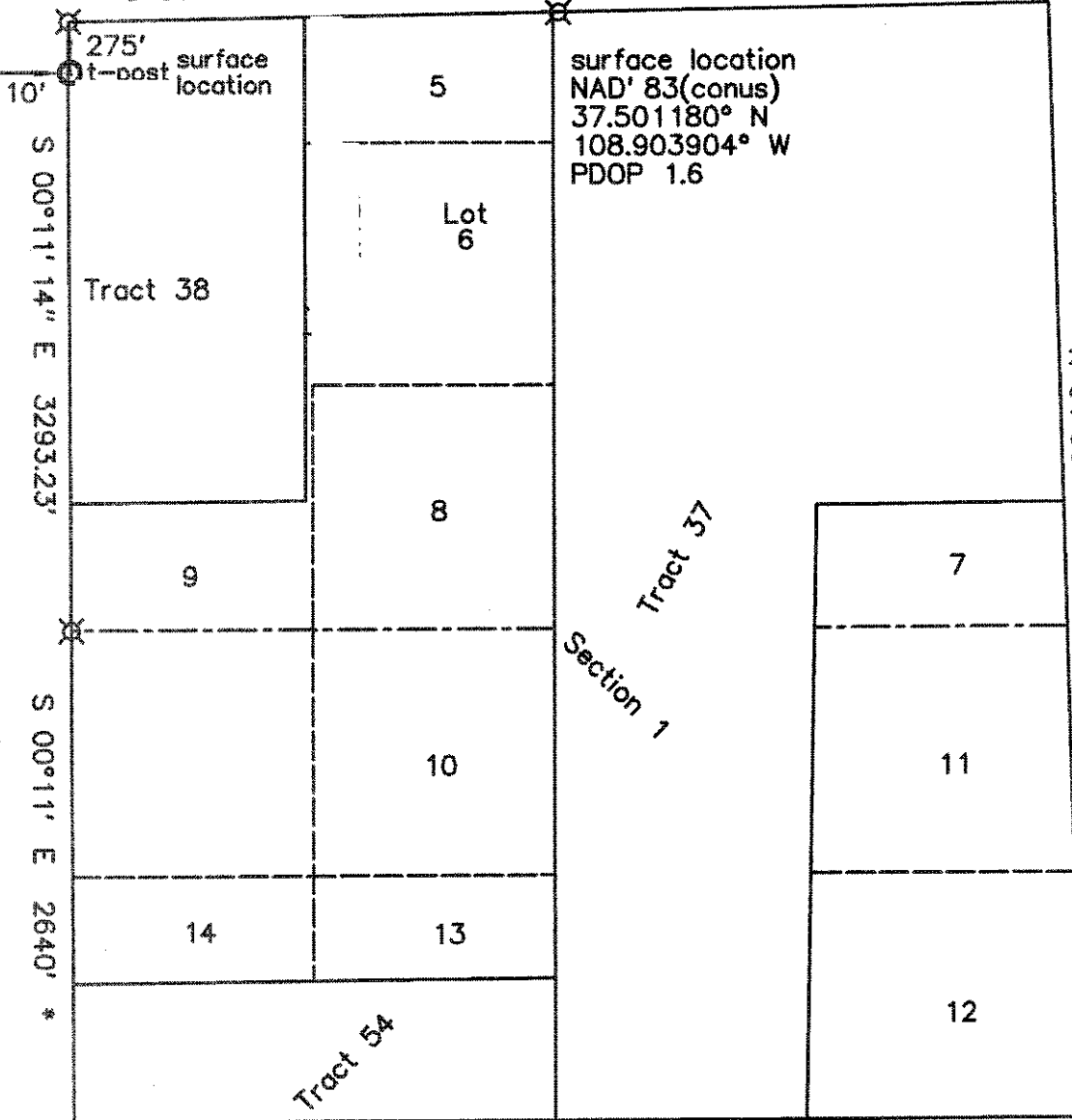


S 88°59' 34" W 2636.29'

N 88°58' E 2640.33' *



0' 1000'

Scale: 1" = 1000'

Basis of bearing is assumed from GPS True North as shown.

- ✕ standard GLO/BLM monument
- set standard monument
- * from GLO/BLM
- ** calculated

S 89°49' 00" W 5420.58' *

KINDER MORGAN CO2 COMPANY, LP

HE - 6

275' FNL & 10' FWL (surface location)

Section 1, T.37 N., R.19 W., NMPM

6474.9' grd. el. NAVD '88 (from OPUS)

1714' FNL & 1420' FWL (bottom hole)

Section 1, T.37N., R.19 W., NMPM

Montezuma County, CO

date of survey : 10/18/2011

rev. : 11/22/2011

date of plat : 10/23/2011

rev.: 11/27/2011

Notes:

- 1) Distances/dimensions are perpendicular to section/aliquot lines.
- 2) Surface use is Fee grazing/hunting.
- 3) GPS was corrected with OPUS, GPS operator was R.J. Caffey, CO LS 36562
- 4) There are no improvements within 400 feet, except a fence on property line at 200 feet.

KNOW ALL MEN BY THESE PRESENTS that I, GERALD G. HUDDLESTON, do hereby certify that this plat was prepared from field notes of an actual survey made by me or under my supervision and that the same is true and accurate to the best of my knowledge and belief.

