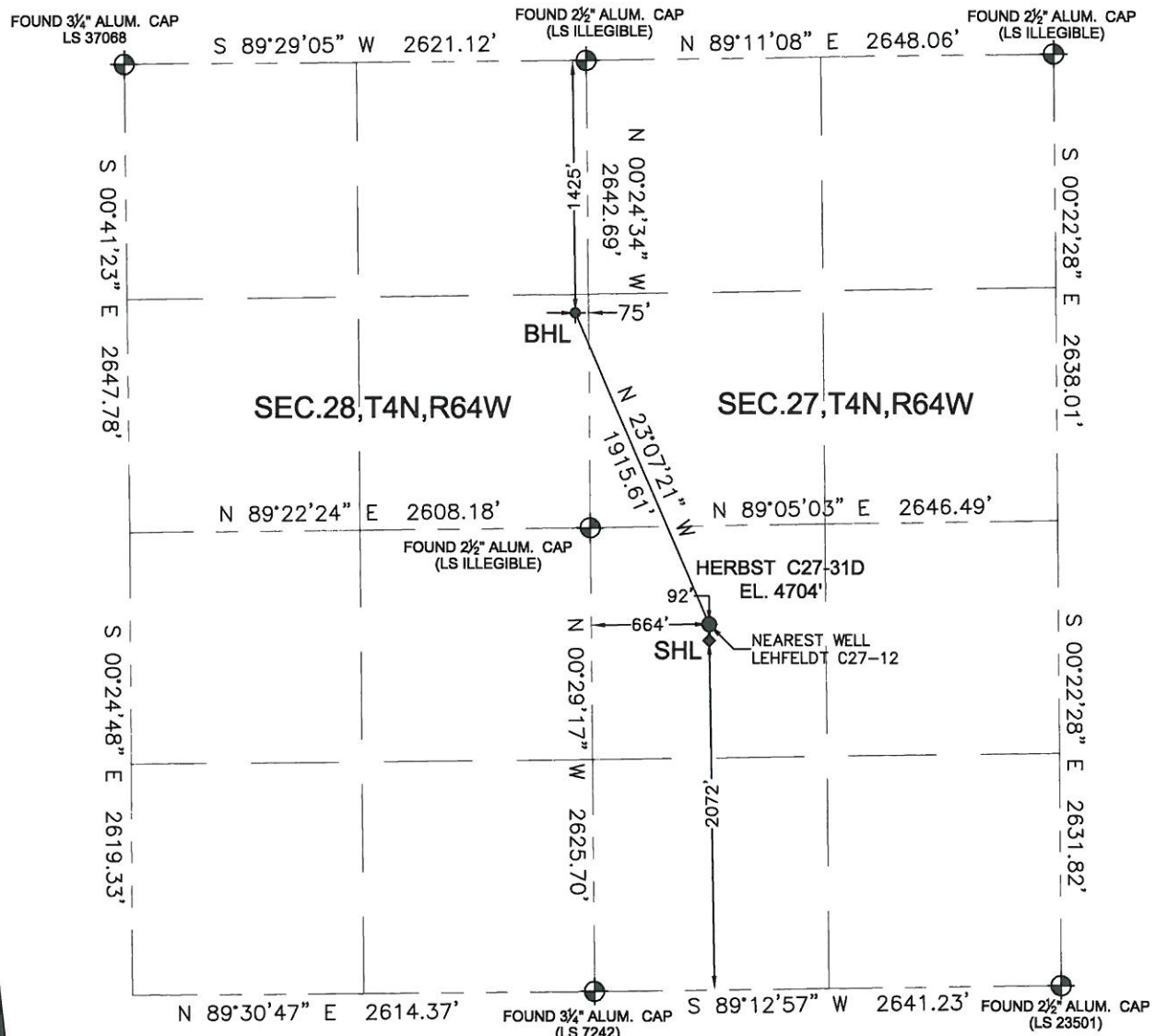


WELL LOCATION CERTIFICATE

THIS MAP DOES NOT REPRESENT A BOUNDARY SURVEY

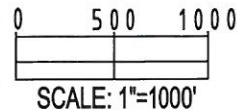
SECTION: 27, 28
TOWNSHIP: 4N
RANGE: 64W

In accordance with a request from Brian DeRose with Noble Energy Inc., Petroleum Field Services, LLC has determined the surface location of the HERBST C27-31D to be 2072' from the SOUTH line and 664' from the WEST line and the bottom hole to be 1425' from the NORTH line and 75' from the EAST line as measured at right angles from the section line of Section 28, Township 4 North, Range 64 West of the Sixth Principal Meridian, County of Weld, State of Colorado.

I hereby state that this Well Location Certificate was prepared by me, or under my direct supervision, that the fieldwork was completed on 10/04/11, for and on behalf of Noble Energy Inc., that this is not a Land Survey Plat or an Improvement Survey Plat, and that it is not to be relied upon for establishment of fence, building, or other future improvement lines.

SURFACE LOCATION:
LATITUDE: 40.28190°N
LONGITUDE: 104.54410°W
PDOP: 2.2
ELEV: 4704'
¼¼ NW¼SW¼
NEAREST PROPERTY LINE: 580' Southeast

BOTTOM HOLE:
LATITUDE: 40.28676°N
LONGITUDE: 104.54673°W



Note:

- 1) Bearings shown are Grid Bearings of the Colorado State Plane Coordinate System, North Zone, North American Datum 1983/2007. The lineal dimensions as shown herein are grid distances based upon the "U.S. Survey Foot."
- 2) Ground elevations are based on an observed GPS elevation (NAVD 1988 DATUM).
- 3) NEAREST EXISTING WELL: LEHFELDT C27-12 92° S
- 4) IMPROVEMENTS: See LOCATION DRAWING exhibit for all visible improvements within 400' of disturbed area.
- 5) SURFACE USE: RANGELAND
- 6) INSTRUMENT OPERATOR: CHRIS BOUB

Note:

According to Colorado law, you must commence any legal action based upon any defect in this W.L.C. within three years after you first discover such defect. In no event, may any action based upon any defect in this survey be commenced more than ten years after the date of this certification shown hereon. (13-80-105 C.R.S.)

LEGEND

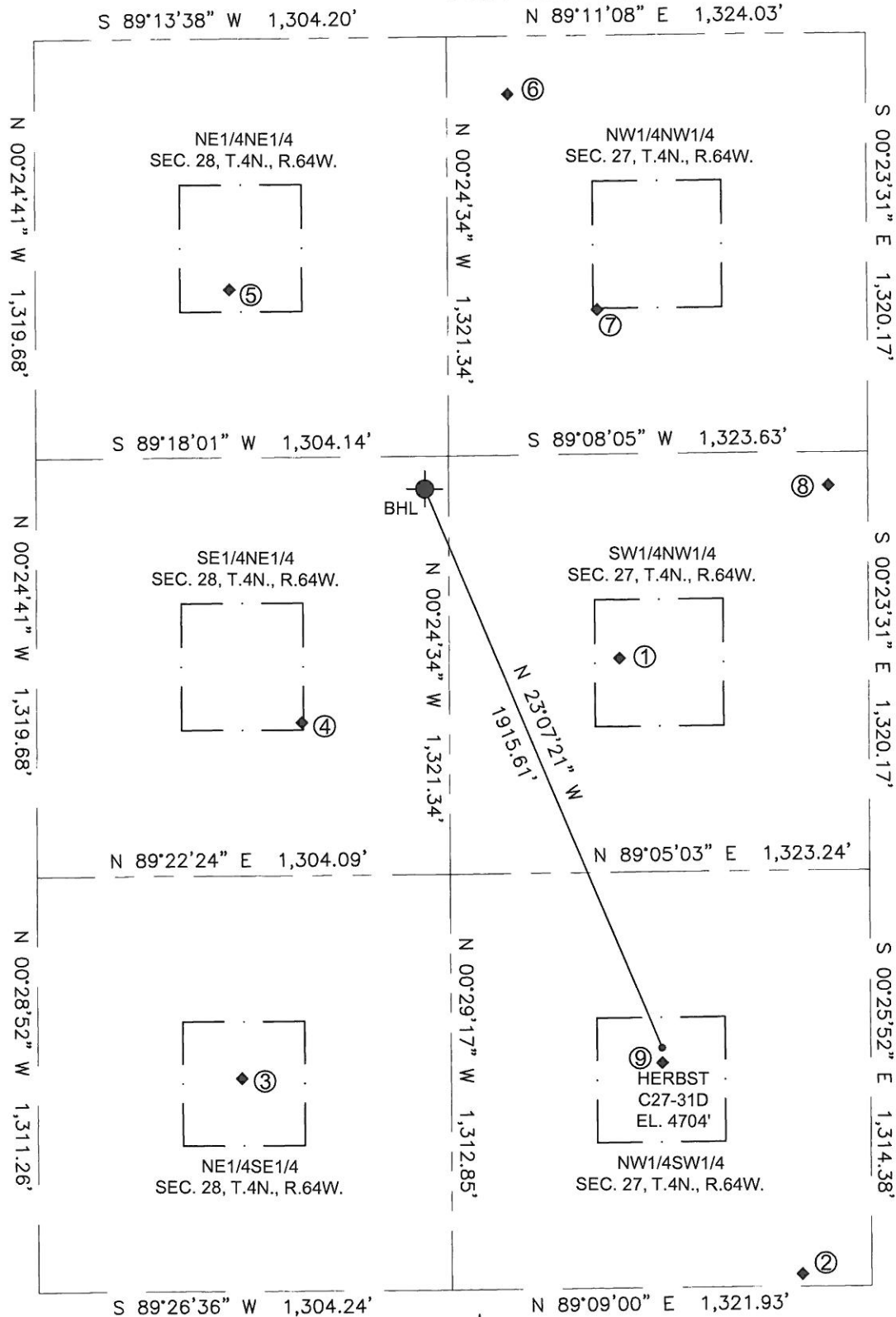
- = FOUND MONUMENT
- = PROPOSED WELL
- = BOTTOM HOLE
- ◆ = EXISTING WELL



MARK A. HALL, PLS 36073
COLORADO LICENSED PROFESSIONAL LAND SURVEYOR
FOR AND ON BEHALF OF P.F.S., LLC

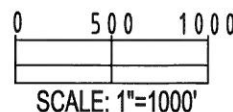
SITE SKETCH

SECTION: 27, 28
TOWNSHIP: 4N
RANGE: 64W



LEGEND

- = PROPOSED WELL
- = BOTTOM HOLE
- ◆ = EXISTING WELL



- ① LEHFELDT C27-5
SW/NW
1966' FNL
537' FWL
LAT--40.28528°N
LONG--104.54454
PDOP: 2.2
ELEV: 4709'
- ② LEHFELDT C27-25
NW/SW
1,353' FSL
1,105' FWL
LAT--40.27993°N
LONG--104.54252°W
PDOP: 2.2
ELEV: 4701'
- ③ THOMPSON 1
SE/NE
1,984' FSL
658' FEL
LAT--40.28166°N
LONG--104.54884°W
PDOP: 2.2
ELEV: 4724'
- ④ NIX PRODUCE 28-814
SE/NE
2,158' FNL
464' FEL
LAT--40.28474°N
LONG--104.54813°W
PDOP: 2.2
ELEV: 4712'
- ⑤ NIX 1
NE/NE
791' FNL
688' FEL
LAT--40.28850°N
LONG--104.54891°W
PDOP: 2.2
ELEV: 4697'
- ⑥ HERBST C27-3
NW/NW
183' FNL
194' FWL
LAT--40.29017°N
LONG--104.54575°W
PDOP: 2.2
ELEV: 4883'
- ⑦ LEHFELDT C27-4
NW/NW
866' FNL
473' FWL
LAT--40.28830°N
LONG--104.54475°W
PDOP: 2.2
ELEV: 4684'
- ⑧ HERBST C27-19
SW/NW
1,426' FNL
1,199' FWL
LAT--40.28677°N
LONG--104.54216°W
PDOP: 2.2
ELEV: 4679'
- ⑨ LEHFELDT C27-12
NW/SW
1,980' FNL
664' FWL
LAT--40.28165°N
LONG--104.54410°W
PDOP: 2.2
ELEV: 4705'