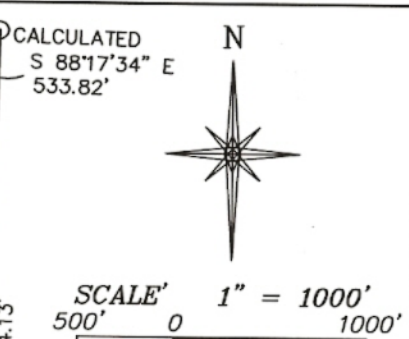
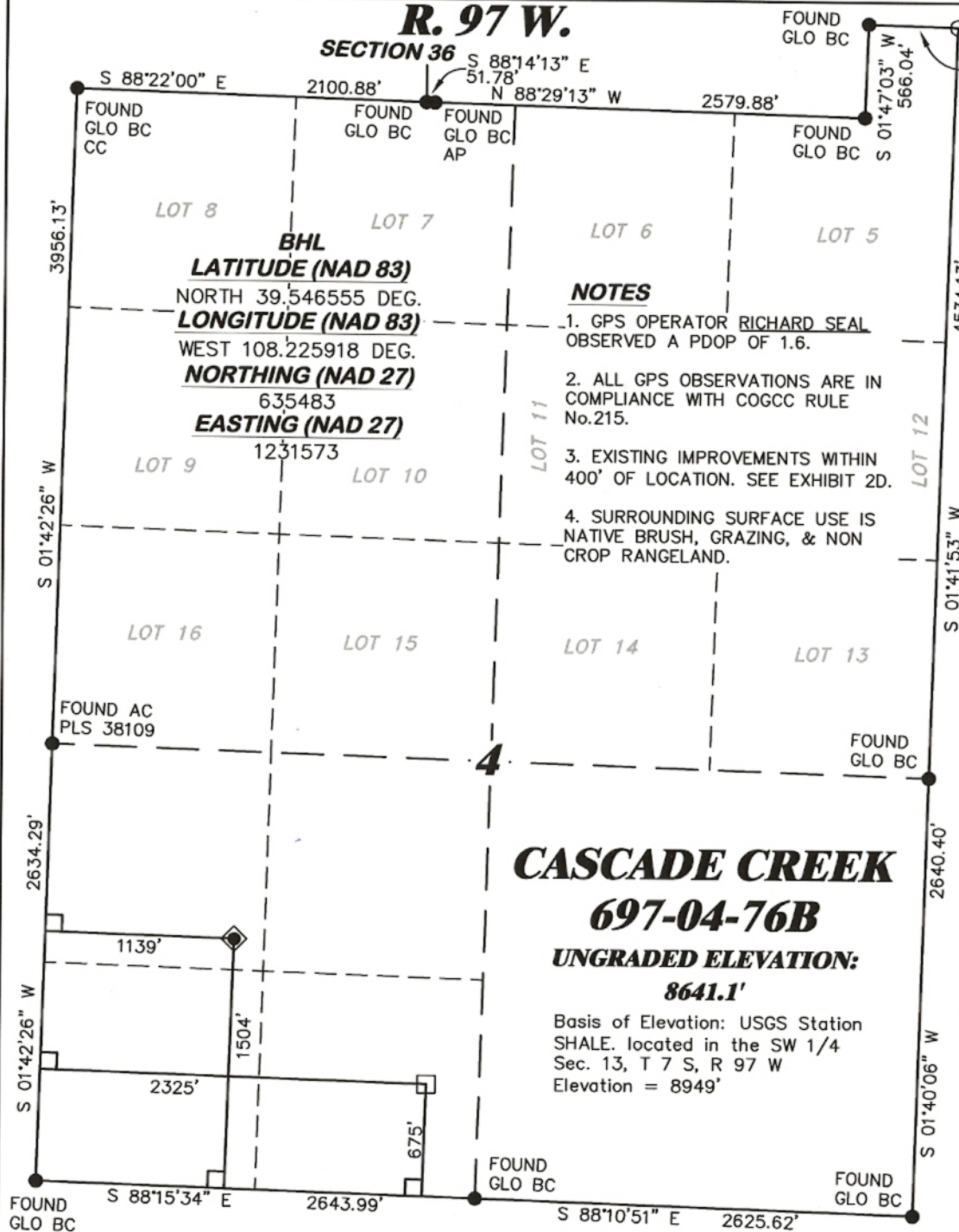


R. 97 W.

SECTION 36



T. 6 S.

SHL

LATITUDE (NAD 83)
NORTH 39.548830 DEG.
LONGITUDE (NAD 83)
WEST 108.230123 DEG.
NORTHING (NAD 27)
636347.37
EASTING (NAD 27)
1230412.51

BASIS OF BEARING/DATUM
SPCS CO CENTRAL NAD 27
BASED ON NGS TRIANGULATION
STATION "SHALE"

THE BASIS OF BEARINGS FOR
THIS SURVEY IS THE WEST LINE
OF THE SW 1/4 OF SECTION 4,
MONUMENTED AS SHOWN AND
BEARING S 01°42'26" W.

LEGEND

- ◆ WELL LOCATION
- APPROX. BHL
- L DENOTES 90° TIE
- FOUND MONUMENT

CASCADE CREEK
697-04-76B

UNGRADED ELEVATION:
8641.1'

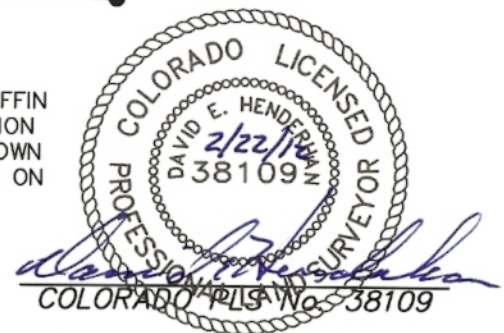
Basis of Elevation: USGS Station
SHALE, located in the SW 1/4
Sec. 13, T 7 S, R 97 W
Elevation = 8949'

SURVEYOR'S STATEMENT

I, DAVID E. HENDERHAN, AN EMPLOYEE AND AGENT ON BEHALF OF D.R. GRIFFIN & ASSOCIATES, INC. STATE THE PLAT HEREON IS A CORRECT REPRESENTATION OF A SURVEY MADE UNDER MY SUPERVISION ON APRIL 8, 2011 OF THE SHOWN CASCADE CREEK 697-04-76B AND THAT THE LOCATION HAS BEEN STAKED ON THE GROUND AS SHOWN ON THE PLAT.

Notice: In accordance with Colorado State Law, any legal action based upon any defect in this survey plat must commence within three (3) years after first discovery of such defect. In no event, may any action based upon any defect in this survey plat be commenced more than ten (10) years from the date of certification shown hereon.

CC 697-04D PAD



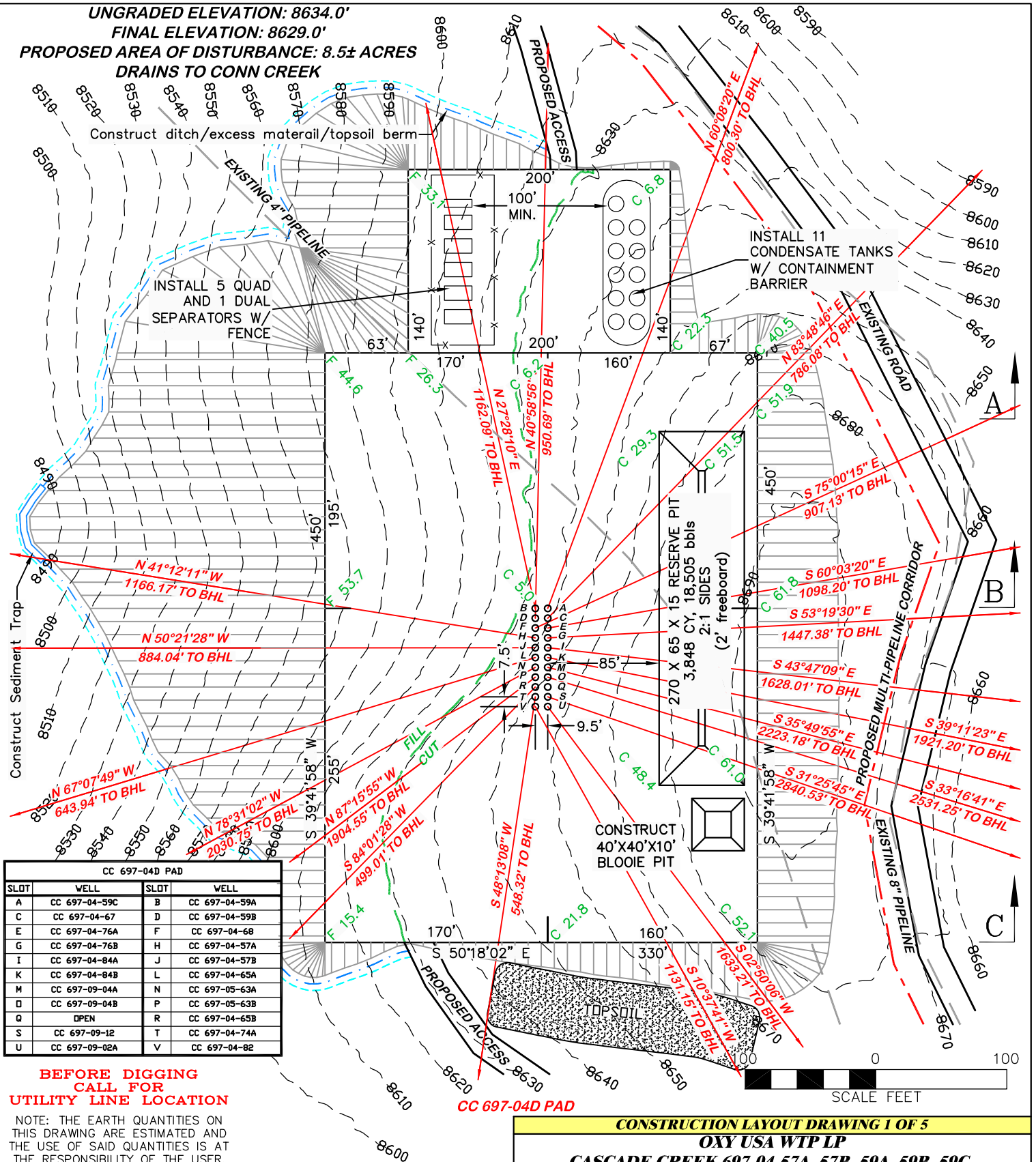
DAVID E. HENDERHAN & ASSOCIATES, INC.
1414 ELK ST., ROCK SPRINGS, WY 82901

DATE: 4/13/11 - DEH	SCALE: 1" = 1000'
REVISED: 2/22/2012 - RAS	DRG JOB No. 18310
CHANGED BOTTOM HOLE	EXHIBIT 1

PLAT OF DRILLING LOCATION IN
NWSW, SECTION 4, FOR
OXY USA WTP LP

1504' F/SL & 1139' F/WL, SECTION 4,
T. 6 S., R. 97 W., 6th P.M.,
GARFIELD COUNTY, COLORADO

UNGRADED ELEVATION: 8634.0'
 FINAL ELEVATION: 8629.0'
 PROPOSED AREA OF DISTURBANCE: 8.5± ACRES
 DRAINS TO CONN CREEK



CC 697-04D PAD			
SLOT	WELL	SLOT	WELL
A	CC 697-04-59C	B	CC 697-04-59A
C	CC 697-04-67	D	CC 697-04-59B
E	CC 697-04-76A	F	CC 697-04-68
G	CC 697-04-76B	H	CC 697-04-57A
I	CC 697-04-84A	J	CC 697-04-57B
K	CC 697-04-84B	L	CC 697-04-65A
M	CC 697-09-04A	N	CC 697-05-63A
O	CC 697-09-04B	P	CC 697-05-63B
Q	OPEN	R	CC 697-04-65B
S	CC 697-09-12	T	CC 697-04-74A
U	CC 697-09-02A	V	CC 697-04-82

**BEFORE DIGGING
 CALL FOR
 UTILITY LINE LOCATION**

NOTE: THE EARTH QUANTITIES ON
 THIS DRAWING ARE ESTIMATED AND
 THE USE OF SAID QUANTITIES IS AT
 THE RESPONSIBILITY OF THE USER.

DRG RIFFIN & ASSOCIATES, INC.
 1414 ELK ST., ROCK SPRINGS, WY 82901

(307) 362-5028

DATE: 4/13/11 - DEH

SCALE: 1" = 100'

REVISED: 2/22/12 - RAS

DRG JOB No. 18310

CHANGED BOTTOM HOLE

EXHIBIT 2

CONSTRUCTION LAYOUT DRAWING 1 OF 5

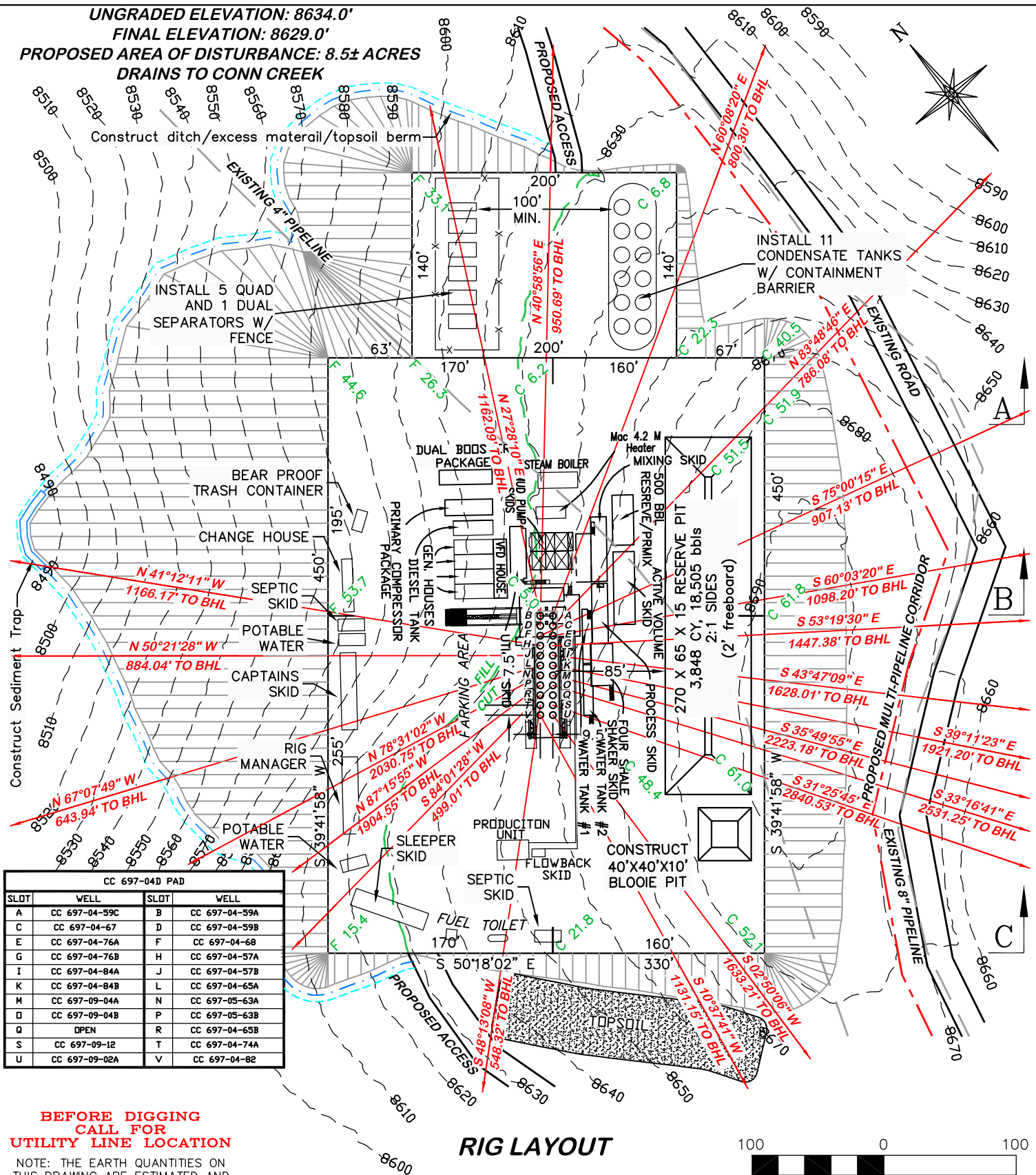
OXY USA WTP LP

CASCADE CREEK 697-04-57A, 57B, 59A, 59B, 59C,
 65A, 65B, 67, 68, 74A, 76A, 76B, 82, 84A, 84B,
 05-63A, 63B, 09-02A, 04A, 04B, 12
 NSW SECTION 4, T. 6 S., R. 97 W., 6th P.M.,
 GARFIELD COUNTY, COLORADO

ESTIMATED EARTHWORK

ITEM	CUT	FILL	TOPSOIL	EXCESS
PAD	157,481 CY	113,979 CY	3,269 CY	40,233 CY
PIT	5,167 CY			5,167 CY
TOTALS	162,648 CY	113,979 CY	3,269 CY	45,400 CY

UNGRADED ELEVATION: 8634.0'
 FINAL ELEVATION: 8629.0'
 PROPOSED AREA OF DISTURBANCE: 8.5± ACRES
 DRAINS TO CONN CREEK



DRG RIFFIN & ASSOCIATES, INC.
 (307) 362-5028 1414 ELK ST., ROCK SPRINGS, WY 82901

DATE: 4/13/11 - DEH	SCALE: 1" = 100'
REVISED: 2/22/12 - RAS	DRG JOB No. 18310
CHANGED BOTTOM HOLE	EXHIBIT 2A

CONSTRUCTION LAYOUT DRAWING 2 OF 5

RIG LAYOUT
OXY USA WTP LP
 CASCADE CREEK 697-04-57A, 57B, 59A, 59B, 59C, 65A, 65B, 67, 68, 74A, 76A, 76B, 82, 84A, 84B, 05-63A, 63B, 09-02A, 04A, 04B, 12
 NWSW SECTION 4, T. 6 S., R. 97 W., 6th P.M.,
 GARFIELD COUNTY, COLORADO