



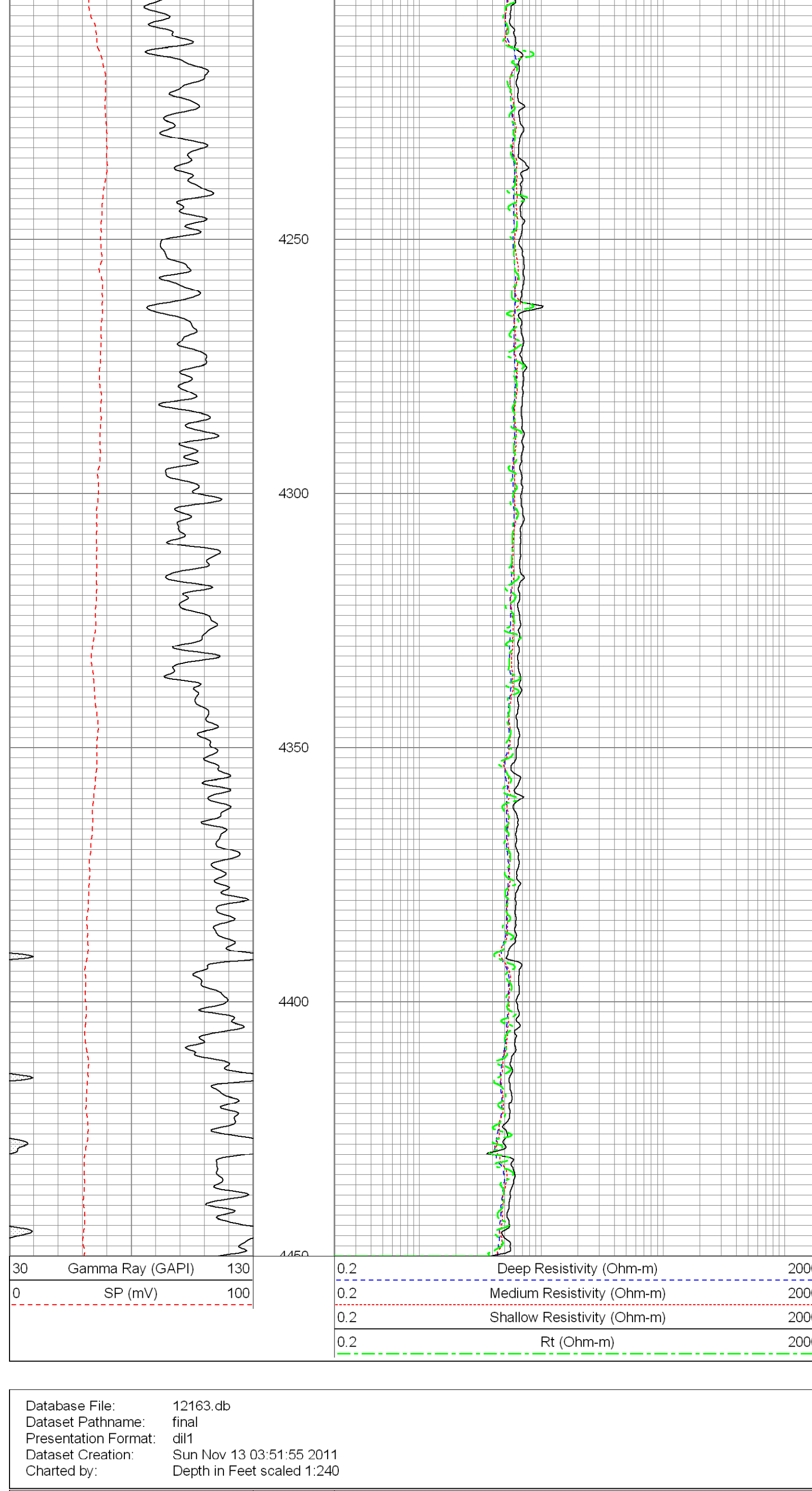
PHOENIX SURVEYS, INC.

HIGH RESOLUTION INDUCTION

Company	Kerr-McGee Oil & Gas Onshore LP			Company	Well	Field	County	State/Prov	Location	Log Services
Well	Markham 34-8			County	Wattenberg	Weld	State/Province	Colorado	Locality	Neutron
Field				County					(EST.)	Microlog
County				State/Prov					Sec. 8, Twp. 2N, Rge. 65W	
Location				Log Services	Log Measured From	KB	Q/L	Elevation	4940	K 4955 D 4954 G 4940
Log Services				KB	Drilling Measured From	KB	Q/L	Elevation	4940	
Log Measured From				KB	Date	November 13, 2011				
Drilling Measured From				KB	Run Number	1				
Date				KB	Depth (m)	8234				
Run Number				KB	Depth (m)	7956				
Depth (m)				KB	Bottom (m)	7956				
Depth (m)				KB	Bottom (m)	7956				
Bottom (m)				KB	Top Log Interval					
Top Log Interval				KB	Casing Driller	841				
Casing Driller				KB	Casing Logger	841				
Casing Logger				KB	Bit Size	7-7/8"				
Bit Size				KB	Type Fluid in Hole	WMS				
Type Fluid in Hole				KB	API Fluid Loss	5.5 L/min				
API Fluid Loss				KB	Source of Sample	Flowline				
Source of Sample				KB	Rm @ Meas. Temp	1.50 @ 95 F				
Rm @ Meas. Temp				KB	Rm @ Meas. Temp	NA				
Rm @ Meas. Temp				KB	Source of Rm / Rmc	Measure / NA				
Source of Rm / Rmc				KB	Rm @ BHT	0.50 @ 232 F				
Rm @ BHT				KB	Rm @ BHT	0.50 @ 232 F				
Rm @ BHT				KB	Time Logged on Bottom	0315				
Time Logged on Bottom				KB	Maximum Recorded Temperature	235 F				
Maximum Recorded Temperature				KB	Equipment Number	52				
Equipment Number				KB	Location	Brighton, CO				
Location				KB	Recorded By	Timothy Conley				
Recorded By				KB	Checked By	Timothy Conley				
Checked By				KB	Washed By	Timothy Conley				
Washed By				KB	Washed By	Timothy Conley				

Annular volume calculated for 4.5" casing
Xtreme Drilling Rig 14
Logs run on limestone matrix.
Thank you for using Phoenix Surveys!!
API #: 05-123-33014-00

Database File:	12163.db
Dataset Pathname:	final
Presentation Format:	dil1
Dataset Creation:	Sun Nov 13 03:51:55 2011
Charted by:	Depth in Feet scaled 1:240



0.2	Deep Resistivity (Ohm-m)	2000
0.2	Medium Resistivity (Ohm-m)	2000
0.2	Shallow Resistivity (Ohm-m)	2000
0.2	Rt (Ohm-m)	2000

0.2	Deep Resistivity (Ohm-m)	2000
0.2	Medium Resistivity (Ohm-m)	2000
0.2	Shallow Resistivity (Ohm-m)	2000
0.2	Rt (Ohm-m)	2000

0.2	Deep Resistivity (Ohm-m)	2000
0.2	Medium Resistivity (Ohm-m)	2000
0.2	Shallow Resistivity (Ohm-m)	2000
0.2	Rt (Ohm-m)	2000

0.2	Deep Resistivity (Ohm-m)	2000
0.2	Medium Resistivity (Ohm-m)	2000
0.2	Shallow Resistivity (Ohm-m)	2000
0.2	Rt (Ohm-m)	2000

0.2	Deep Resistivity (Ohm-m)	2000
0.2	Medium Resistivity (Ohm-m)	2000
0.2	Shallow Resistivity (Ohm-m)	2000
0.2	Rt (Ohm-m)	2000

0.2	Deep Resistivity (Ohm-m)	2000
0.2	Medium Resistivity (Ohm-m)	2000
0.2	Shallow Resistivity (Ohm-m)	2000
0.2	Rt (Ohm-m)	2000

0.2	Deep Resistivity (Ohm-m)	2000
0.2	Medium Resistivity (Ohm-m)	2000
0.2	Shallow Resistivity (Ohm-m)	2000
0.2	Rt (Ohm-m)	2000

0.2	Deep Resistivity (Ohm-m)	2000
0.2	Medium Resistivity (Ohm-m)	2000
0.2	Shallow Resistivity (Ohm-m)	2000
0.2	Rt (Ohm-m)	2000

0.2	Deep Resistivity (Ohm-m)	2000
0.2	Medium Resistivity (Ohm-m)	2000
0.2	Shallow Resistivity (Ohm-m)	2000
0.2	Rt (Ohm-m)	2000

0.2	Deep Resistivity (Ohm-m)	2000
0.2	Medium Resistivity (Ohm-m)	2000
0.2	Shallow Resistivity (Ohm-m)	2000
0.2	Rt (Ohm-m)	2000

0.2	Deep Resistivity (Ohm-m)	2000
0.2	Medium Resistivity (Ohm-m)	2000
0.2	Shallow Resistivity (Ohm-m)	2000
0.2	Rt (Ohm-m)	2000

0.2	Deep Resistivity (Ohm-m)	2000
0.2	Medium Resistivity (Ohm-m)	2000
0.2	Shallow Resistivity (Ohm-m)	2000
0.2	Rt (Ohm-m)	2000

0.2	Deep Resistivity (Ohm-m)	2000
0.2	Medium Resistivity (Ohm-m)	2000
0.2	Shallow Resistivity (Ohm-m)	2000
0.2	Rt (Ohm-m)	2000

0.2	Deep Resistivity (Ohm-m)	2000
0.2	Medium Resistivity (Ohm-m)	2000
0.2	Shallow Resistivity (Ohm-m)	2000
0.2	Rt (Ohm-m)	2000

0.2	Deep Resistivity (Ohm-m)	2000
0.2	Medium Resistivity (Ohm-m)	2000
0.2	Shallow Resistivity (Ohm-m)	2000
0.2	Rt (Ohm-m)	2000

0.2	Deep Resistivity (Ohm-m)	2000
0.2	Medium Resistivity (Ohm-m)	2000
0.2	Shallow Resistivity (Ohm-m)	2000
0.2	Rt (Ohm-m)	2000

0.2	Deep Resistivity (Ohm-m)	2000
0.2	Medium Resistivity (Ohm-m)	2000
0.2	Shallow Resistivity (Ohm-m)	2000
0.2	Rt (Ohm-m)	2000

0.2	Deep Resistivity (Ohm-m)	2000
0.2	Medium Resistivity (Ohm-m)	2000
0.2	Shallow Resistivity (Ohm-m)	2000
0.2	Rt (Ohm-m)	2000

0.2	Deep Resistivity (Ohm-m)	2000
0.2	Medium Resistivity (Ohm-m)	2000
0.2	Shallow Resistivity (Ohm-m)	2000
0.2	Rt (Ohm-m)	2000

0.2	Deep Resistivity (Ohm-m)	2000
0.2	Medium Resistivity (Ohm-m)	2000
0.2	Shallow Resistivity (Ohm-m)	2000
0.2	Rt (Ohm-m)	2000

0.2	Deep Resistivity (Ohm-m)	2000
0.2	Medium Resistivity (Ohm-m)	2000
0.2	Shallow Resistivity (Ohm-m)	2000
0.2	Rt (Ohm-m)	2000

0.2	Deep Resistivity (Ohm-m)	2000
0.2	Medium Resistivity (Ohm-m)	2000
0.2	Shallow Resistivity (Ohm-m)	2000
0.2	Rt (Ohm-m)	2000

0.2	Deep Resistivity (Ohm-m)	2000
0.2	Medium Resistivity (Ohm-m)	2000
0.2	Shallow Resistivity (Ohm-m)	2000
0.2	Rt (Ohm-m)	2000

0.2	Deep Resistivity (Ohm-m)	2000
0.2	Medium Resistivity (Ohm-m)	2000
0.2	Shallow Resistivity (Ohm-m)	2000
0.2	Rt (Ohm-m)	2000

0.2	Deep Resistivity (Ohm-m)	2000
0.2	Medium Resistivity (Ohm-m)	2000
0.2	Shallow Resistivity (Ohm-m)	2000
0.2	Rt (Ohm-m)	2000

0.2	Deep Resistivity (Ohm-m)	2000
0.2	Medium Resistivity (Ohm-m)	2000
0.2	Shallow Resistivity (Ohm-m)	2000
0.2	Rt (Ohm-m)	2000

0.2	Deep Resistivity (Ohm-m)	2000
0.2	Medium Resistivity (Ohm-m)	2000
0.2	Shallow Resistivity (Ohm-m)	2000
0.2	Rt (Ohm-m)	2000

0.2	Deep Resistivity (Ohm-m)	2000
0.2	Medium Resistivity (Ohm-m)	2000
0.2	Shallow Resistivity (Ohm-m)	2000
0.2	Rt (Ohm-m)	2000

0.2	Deep Resistivity (Ohm-m)	2000
0.2	Medium Resistivity (Ohm-m)	2000
0.2	Shallow Resistivity (Ohm-m)	2000
0.2	Rt (Ohm-m)	2000

0.2	Deep Resistivity (Ohm-m)	2000
0.2	Medium Resistivity (Ohm-m)	2000
0.2	Shallow Resistivity (Ohm-m)	2000
0.2	Rt (Ohm-m)	2000

0.2	Deep Resistivity (Ohm-m)	2000
0.2	Medium Resistivity (Ohm-m)	2000
0.2	Shallow Resistivity (Ohm-m)	2000
0.2	Rt (Ohm-m)	2000

0.2	Deep Resistivity (Ohm-m)	2000
0.2	Medium Resistivity (Ohm-m)	2000
0.2	Shallow Resistivity (Ohm-m)	2000
0.2	Rt (Ohm-m)	2000

0.2	Deep Resistivity (Ohm-m)	2000
0.2	Medium Resistivity (Ohm-m)	2000
0.2	Shallow Resistivity (Ohm-m)	2000
0.2	Rt (Ohm-m)	2000

0.2	Deep Resistivity (Ohm-m)	2000
0.2	Medium Resistivity (Ohm-m)	2000
0.2	Shallow Resistivity (Ohm-m)	2000
0.2	Rt (Ohm-m)	2000

0.2	Deep Resistivity (Ohm-m)	2000
0.2	Medium Resistivity (Ohm-m)	2000
0.2	Shallow Resistivity (Ohm-m)	2000
0.2	Rt (Ohm-m)	2000