

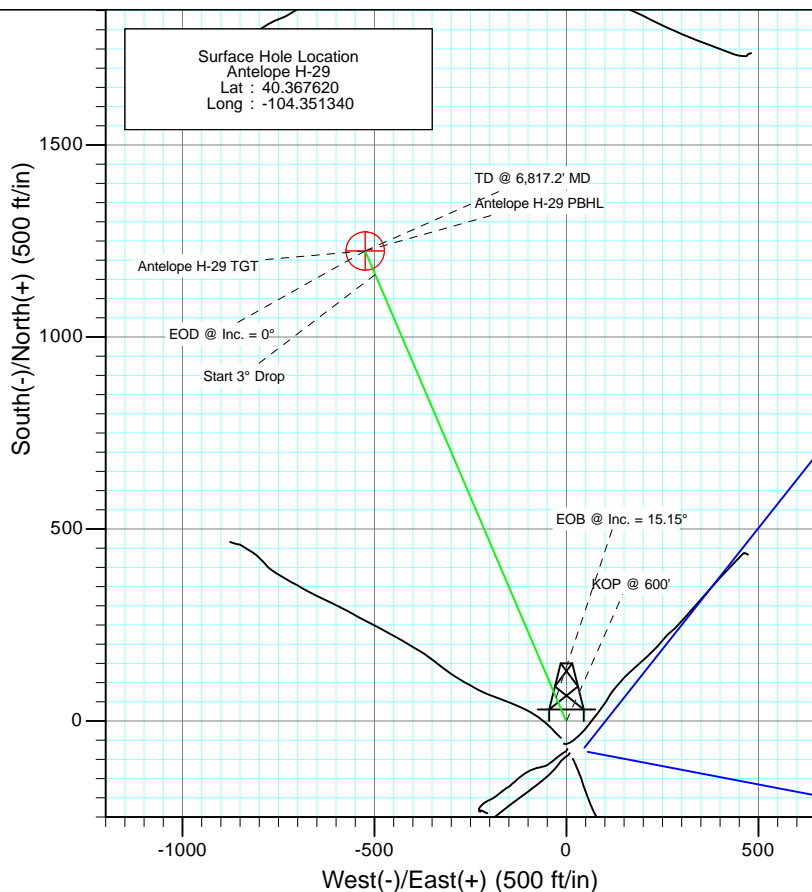
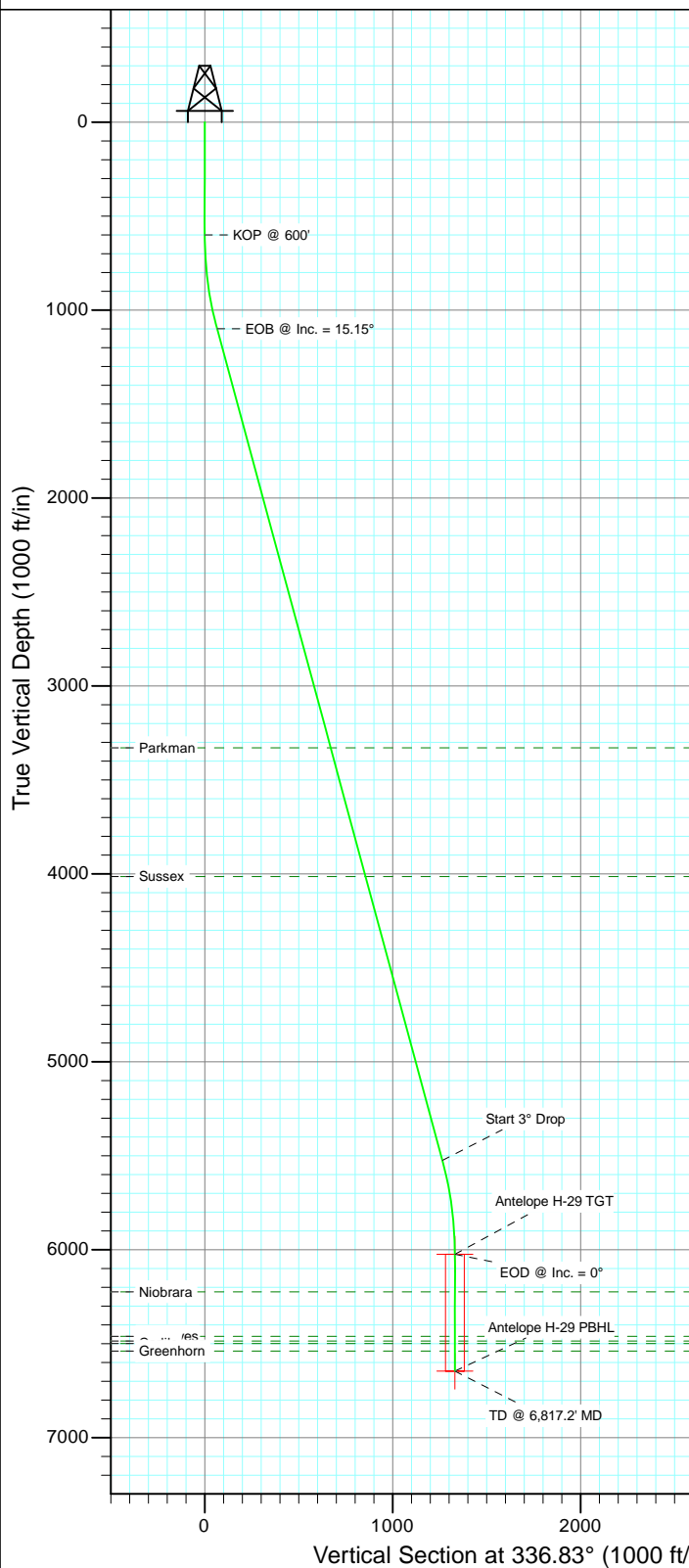


Project: Weld County
Site: Antelope I 29 Pad
Well: Antelope H-29
Wellbore: OH
Design: Plan #1



SECTION DETAILS

Sec	MD	Inc	Azi	TVD	+N/-S	+E/-W	Dleg	TFace	VSect	Target
1	0.0	0.00	0.00	0.0	0.0	0.0	0.00	0.00	0.0	
2	600.0	0.00	0.00	600.0	0.0	0.0	0.00	0.00	0.0	
3	1105.1	15.15	336.83	1099.3	61.1	-26.1	3.00	336.83	66.4	
4	5690.0	15.15	336.83	5524.7	1163.0	-497.7	0.00	0.00	1265.0	
5	6195.2	0.00	0.00	6024.0	1224.0	-523.8	3.00	180.00	1331.4	Antelope H-29 TGT
6	6817.2	0.00	0.00	6646.0	1224.0	-523.8	0.00	0.00	1331.4	Antelope H-29 PBHL



FORMATION TOP DETAILS

TVDPath	MDPath	Formation
3329.0	3415.2	Parkman
4014.0	4124.9	Sussex
6224.0	6395.2	Niobrara
6461.0	6632.2	Ft. Hayes
6486.0	6657.2	Codell
6499.0	6670.2	Carlile
6539.0	6710.2	Greenhorn



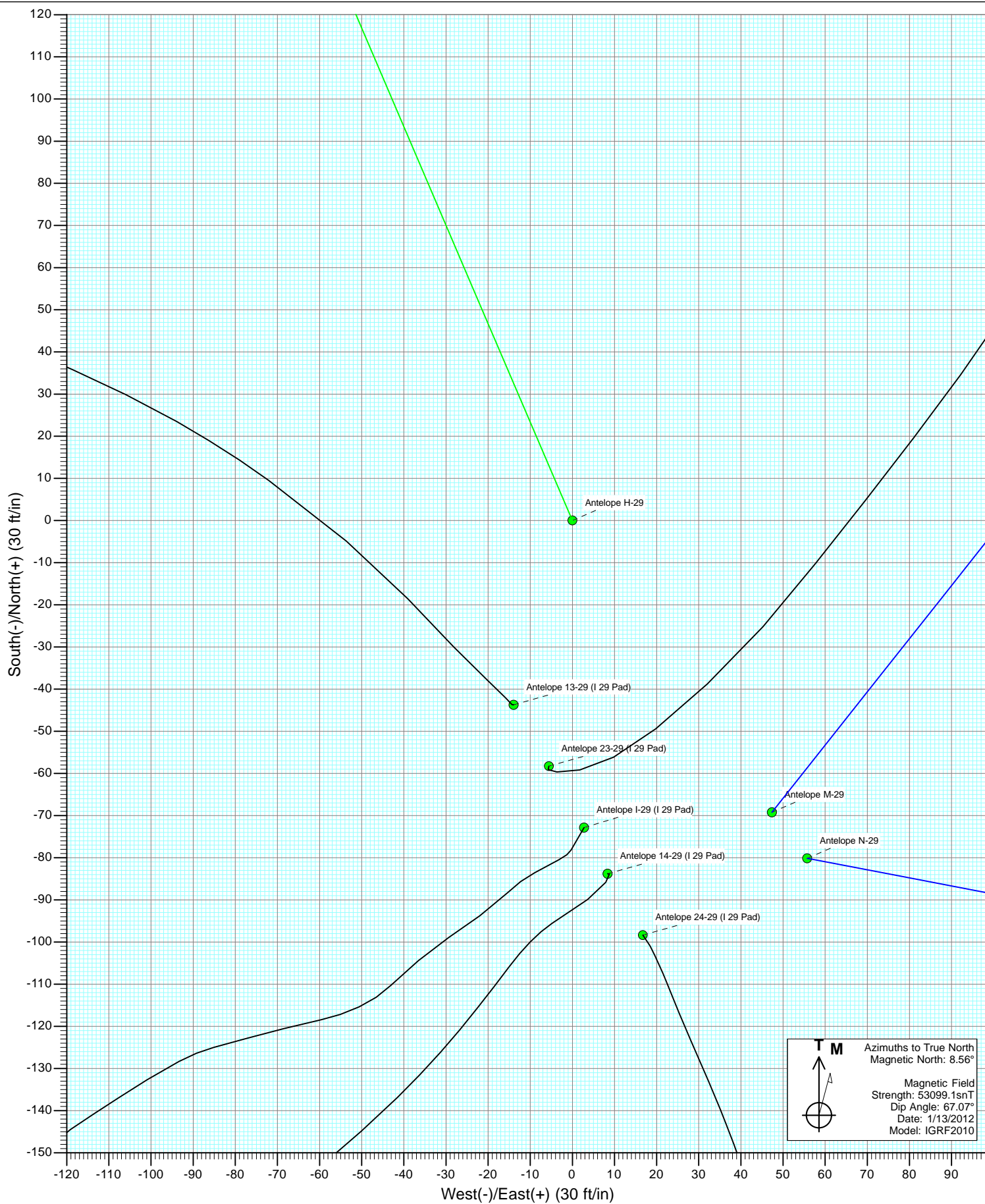
Azimuths to True North
Magnetic North: 8.56°

Magnetic Field
Strength: 53099.1snT
Dip Angle: 67.07°
Date: 1/13/2012
Model: IGRF2010

Plan #1
Antelope H-29
125XXX; SC

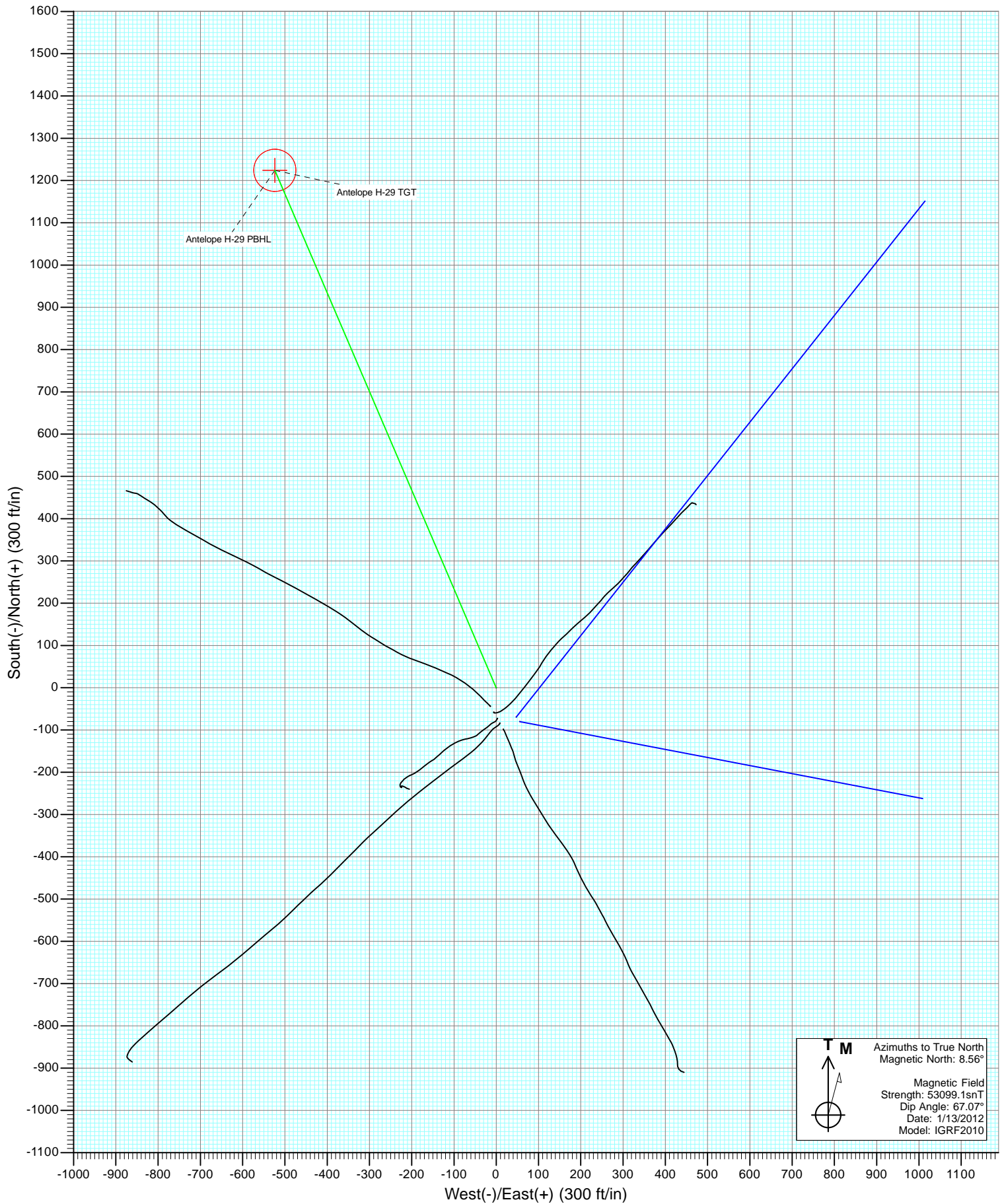
KBE @ 4599.0ft (Original Well Elev)
North American Datum 1983
Well Antelope H-29, True North

Target	Azimuth	Origin Type	N/S	E/W	From TVD
No Target (Freehand)	336.83	Slot	0.0	0.0	0.0
Name	TVD	+N/-S	+E/-W	Latitude	Longitude
Antelope H-29 TGT	6024.0	1224.0	-523.8	40.370980	-104.353220
Antelope H-29 PBHL	6646.0	1224.0	-523.8	40.370980	-104.353220



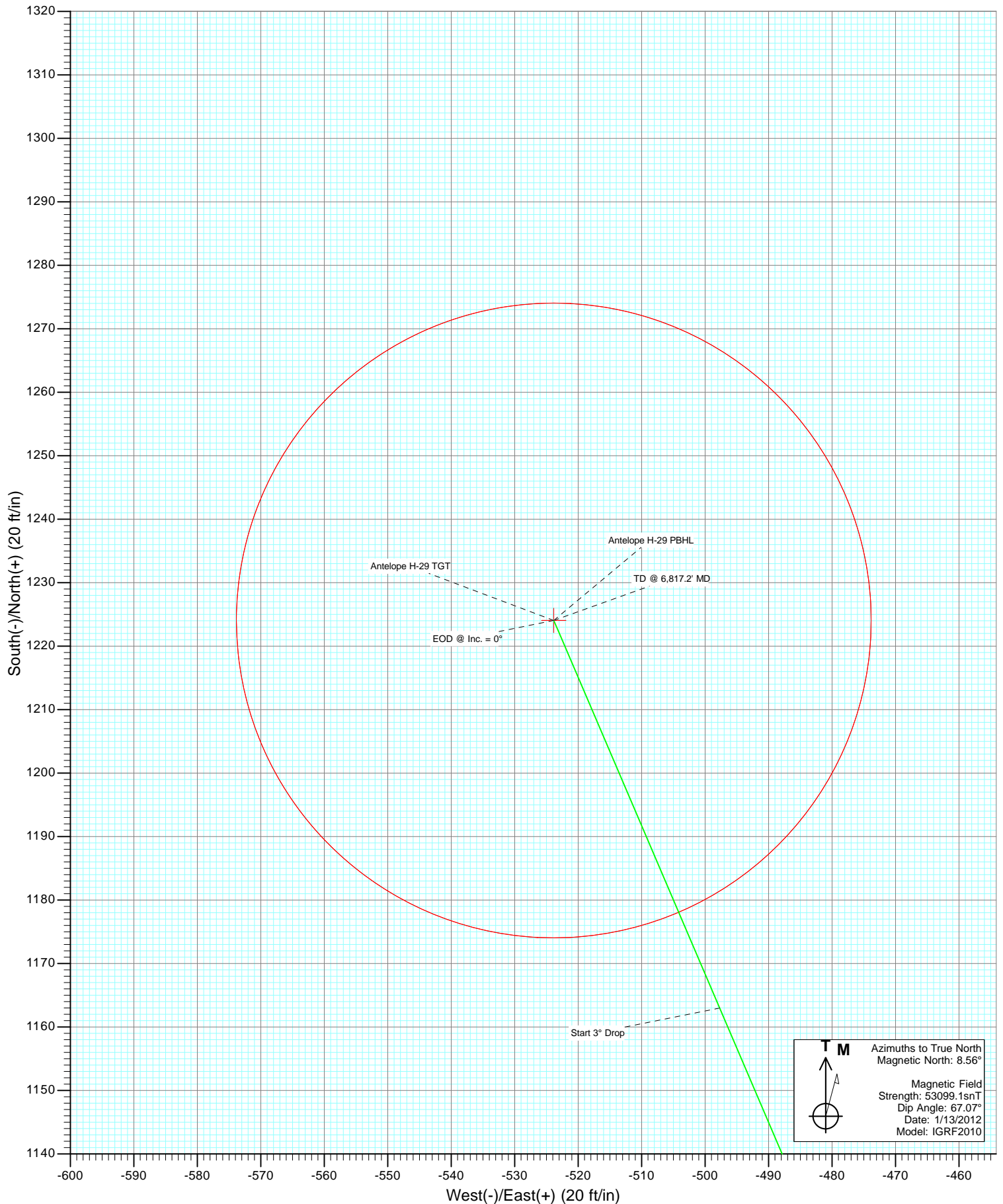


Project: Weld County
Site: Antelope I 29 Pad
Well: Antelope H-29
Wellbore: OH
Design: Plan #1





Project: Weld County
Site: Antelope I 29 Pad
Well: Antelope H-29
Wellbore: OH
Design: Plan #1



Cathedral Energy Services

Planning Report

Database:	USA EDM 5000 Multi Users DB	Local Co-ordinate Reference:	Well Antelope H-29
Company:	Bonanza Creek Energy Operating Company, LLC	TVD Reference:	KBE @ 4599.0ft (Original Well Elev)
Project:	Weld County	MD Reference:	KBE @ 4599.0ft (Original Well Elev)
Site:	Antelope I 29 Pad	North Reference:	True
Well:	Antelope H-29	Survey Calculation Method:	Minimum Curvature
Wellbore:	OH		
Design:	Plan #1		

Project	Weld County		
Map System:	US State Plane 1983	System Datum:	Mean Sea Level
Geo Datum:	North American Datum 1983		
Map Zone:	Colorado Northern Zone		

Site		Antelope I 29 Pad			
Site Position:		Northing:	1,378,781.88 ft	Latitude:	40.367460
From:	Lat/Long	Easting:	3,320,059.38 ft	Longitude:	-104.351360
Position Uncertainty:	0.0 ft	Slot Radius:	13.200 in	Grid Convergence:	0.74 °

Well	Antelope H-29					
Well Position	+N/-S	0.0 ft	Northing:	1,378,840.23 ft	Latitude:	40.367620
	+E/-W	0.0 ft	Easting:	3,320,064.19 ft	Longitude:	-104.351340
Position Uncertainty		0.0 ft	Wellhead Elevation:	ft	Ground Level:	4,589.0 ft

Wellbore	OH				
Magnetics	Model Name	Sample Date	Declination (°)	Dip Angle (°)	Field Strength (nT)
	IGRF2010	1/13/2012	8.56	67.07	53,099

Design	Plan #1			
Audit Notes:				
Version:	Phase:	PLAN	Tie On Depth:	0.0
Vertical Section:	Depth From (TVD) (ft)	+N/-S (ft)	+E/-W (ft)	Direction (°)
	0.0	0.0	0.0	336.83

Plan Sections										
Measured Depth (ft)	Inclination (°)	Azimuth (°)	Vertical Depth (ft)	+N/-S (ft)	+E/-W (ft)	Dogleg Rate (°/100ft)	Build Rate (°/100ft)	Turn Rate (°/100ft)	TFO (°)	Target
0.0	0.00	0.00	0.0	0.0	0.0	0.00	0.00	0.00	0.00	
600.0	0.00	0.00	600.0	0.0	0.0	0.00	0.00	0.00	0.00	
1,105.1	15.15	336.83	1,099.3	61.1	-26.1	3.00	3.00	0.00	336.83	
5,690.0	15.15	336.83	5,524.7	1,163.0	-497.7	0.00	0.00	0.00	0.00	
6,195.2	0.00	0.00	6,024.0	1,224.0	-523.8	3.00	-3.00	0.00	180.00	Antelope H-29 TGT
6,817.2	0.00	0.00	6,646.0	1,224.0	-523.8	0.00	0.00	0.00	0.00	Antelope H-29 PBHL

Cathedral Energy Services

Planning Report

Database:	USA EDM 5000 Multi Users DB	Local Co-ordinate Reference:	Well Antelope H-29
Company:	Bonanza Creek Energy Operating Company, LLC	TVD Reference:	KBE @ 4599.0ft (Original Well Elev)
Project:	Weld County	MD Reference:	KBE @ 4599.0ft (Original Well Elev)
Site:	Antelope I 29 Pad	North Reference:	True
Well:	Antelope H-29	Survey Calculation Method:	Minimum Curvature
Wellbore:	OH		
Design:	Plan #1		

Planned Survey

Measured Depth (ft)	Inclination (°)	Azimuth (°)	Vertical Depth (ft)	+N/-S (ft)	+E/-W (ft)	Vertical Section (ft)	Dogleg Rate (°/100ft)	Build Rate (°/100ft)	Comments / Formations
0.0	0.00	0.00	0.0	0.0	0.0	0.0	0.00	0.00	
100.0	0.00	0.00	100.0	0.0	0.0	0.0	0.00	0.00	
200.0	0.00	0.00	200.0	0.0	0.0	0.0	0.00	0.00	
300.0	0.00	0.00	300.0	0.0	0.0	0.0	0.00	0.00	
400.0	0.00	0.00	400.0	0.0	0.0	0.0	0.00	0.00	
500.0	0.00	0.00	500.0	0.0	0.0	0.0	0.00	0.00	
600.0	0.00	0.00	600.0	0.0	0.0	0.0	0.00	0.00	KOP @ 600'
700.0	3.00	336.83	700.0	2.4	-1.0	2.6	3.00	3.00	
800.0	6.00	336.83	799.6	9.6	-4.1	10.5	3.00	3.00	
900.0	9.00	336.83	898.8	21.6	-9.3	23.5	3.00	3.00	
1,000.0	12.00	336.83	997.1	38.4	-16.4	41.7	3.00	3.00	
1,105.1	15.15	336.83	1,099.3	61.1	-26.1	66.4	3.00	3.00	EOB @ Inc. = 15.15°
1,200.0	15.15	336.83	1,190.8	83.9	-35.9	91.2	0.00	0.00	
1,300.0	15.15	336.83	1,287.4	107.9	-46.2	117.4	0.00	0.00	
1,400.0	15.15	336.83	1,383.9	131.9	-56.5	143.5	0.00	0.00	
1,500.0	15.15	336.83	1,480.4	156.0	-66.7	169.6	0.00	0.00	
1,600.0	15.15	336.83	1,576.9	180.0	-77.0	195.8	0.00	0.00	
1,700.0	15.15	336.83	1,673.4	204.0	-87.3	221.9	0.00	0.00	
1,800.0	15.15	336.83	1,770.0	228.1	-97.6	248.1	0.00	0.00	
1,900.0	15.15	336.83	1,866.5	252.1	-107.9	274.2	0.00	0.00	
2,000.0	15.15	336.83	1,963.0	276.1	-118.2	300.4	0.00	0.00	
2,100.0	15.15	336.83	2,059.5	300.2	-128.5	326.5	0.00	0.00	
2,200.0	15.15	336.83	2,156.1	324.2	-138.7	352.6	0.00	0.00	
2,300.0	15.15	336.83	2,252.6	348.2	-149.0	378.8	0.00	0.00	
2,400.0	15.15	336.83	2,349.1	372.3	-159.3	404.9	0.00	0.00	
2,500.0	15.15	336.83	2,445.6	396.3	-169.6	431.1	0.00	0.00	
2,600.0	15.15	336.83	2,542.1	420.3	-179.9	457.2	0.00	0.00	
2,700.0	15.15	336.83	2,638.7	444.4	-190.2	483.3	0.00	0.00	
2,800.0	15.15	336.83	2,735.2	468.4	-200.4	509.5	0.00	0.00	
2,900.0	15.15	336.83	2,831.7	492.4	-210.7	535.6	0.00	0.00	
3,000.0	15.15	336.83	2,928.2	516.5	-221.0	561.8	0.00	0.00	
3,100.0	15.15	336.83	3,024.8	540.5	-231.3	587.9	0.00	0.00	
3,200.0	15.15	336.83	3,121.3	564.5	-241.6	614.1	0.00	0.00	
3,300.0	15.15	336.83	3,217.8	588.6	-251.9	640.2	0.00	0.00	
3,400.0	15.15	336.83	3,314.3	612.6	-262.2	666.3	0.00	0.00	
3,415.2	15.15	336.83	3,329.0	616.3	-263.7	670.3	0.00	0.00	Parkman
3,500.0	15.15	336.83	3,410.8	636.6	-272.4	692.5	0.00	0.00	
3,600.0	15.15	336.83	3,507.4	660.7	-282.7	718.6	0.00	0.00	
3,700.0	15.15	336.83	3,603.9	684.7	-293.0	744.8	0.00	0.00	
3,800.0	15.15	336.83	3,700.4	708.7	-303.3	770.9	0.00	0.00	
3,900.0	15.15	336.83	3,796.9	732.8	-313.6	797.1	0.00	0.00	
4,000.0	15.15	336.83	3,893.5	756.8	-323.9	823.2	0.00	0.00	
4,100.0	15.15	336.83	3,990.0	780.8	-334.2	849.3	0.00	0.00	
4,124.9	15.15	336.83	4,014.0	786.8	-336.7	855.8	0.00	0.00	Sussex
4,200.0	15.15	336.83	4,086.5	804.9	-344.4	875.5	0.00	0.00	
4,300.0	15.15	336.83	4,183.0	828.9	-354.7	901.6	0.00	0.00	
4,400.0	15.15	336.83	4,279.6	852.9	-365.0	927.8	0.00	0.00	
4,500.0	15.15	336.83	4,376.1	877.0	-375.3	953.9	0.00	0.00	
4,600.0	15.15	336.83	4,472.6	901.0	-385.6	980.0	0.00	0.00	
4,700.0	15.15	336.83	4,569.1	925.0	-395.9	1,006.2	0.00	0.00	
4,800.0	15.15	336.83	4,665.6	949.1	-406.2	1,032.3	0.00	0.00	
4,900.0	15.15	336.83	4,762.2	973.1	-416.4	1,058.5	0.00	0.00	

Cathedral Energy Services

Planning Report

Database:	USA EDM 5000 Multi Users DB	Local Co-ordinate Reference:	Well Antelope H-29
Company:	Bonanza Creek Energy Operating Company, LLC	TVD Reference:	KBE @ 4599.0ft (Original Well Elev)
Project:	Weld County	MD Reference:	KBE @ 4599.0ft (Original Well Elev)
Site:	Antelope I 29 Pad	North Reference:	True
Well:	Antelope H-29	Survey Calculation Method:	Minimum Curvature
Wellbore:	OH		
Design:	Plan #1		

Planned Survey									
Measured Depth (ft)	Inclination (°)	Azimuth (°)	Vertical Depth (ft)	+N/-S (ft)	+E/-W (ft)	Vertical Section (ft)	Dogleg Rate (°/100ft)	Build Rate (°/100ft)	Comments / Formations
5,000.0	15.15	336.83	4,858.7	997.1	-426.7	1,084.6	0.00	0.00	
5,100.0	15.15	336.83	4,955.2	1,021.2	-437.0	1,110.8	0.00	0.00	
5,200.0	15.15	336.83	5,051.7	1,045.2	-447.3	1,136.9	0.00	0.00	
5,300.0	15.15	336.83	5,148.3	1,069.2	-457.6	1,163.0	0.00	0.00	
5,400.0	15.15	336.83	5,244.8	1,093.3	-467.9	1,189.2	0.00	0.00	
5,500.0	15.15	336.83	5,341.3	1,117.3	-478.1	1,215.3	0.00	0.00	
5,600.0	15.15	336.83	5,437.8	1,141.4	-488.4	1,241.5	0.00	0.00	
5,690.0	15.15	336.83	5,524.7	1,163.0	-497.7	1,265.0	0.00	0.00	Start 3° Drop
5,700.0	14.86	336.83	5,534.3	1,165.4	-498.7	1,267.6	3.00	-3.00	
5,800.0	11.86	336.83	5,631.6	1,186.6	-507.8	1,290.7	3.00	-3.00	
5,900.0	8.86	336.83	5,730.0	1,203.1	-514.9	1,308.7	3.00	-3.00	
6,000.0	5.86	336.83	5,829.2	1,214.9	-519.9	1,321.5	3.00	-3.00	
6,100.0	2.86	336.83	5,928.9	1,221.9	-522.9	1,329.1	3.00	-3.00	
6,195.2	0.00	0.00	6,024.0	1,224.0	-523.8	1,331.4	3.00	-3.00	EOD @ Inc. = 0°
6,200.0	0.00	0.00	6,028.8	1,224.0	-523.8	1,331.4	0.00	0.00	
6,300.0	0.00	0.00	6,128.8	1,224.0	-523.8	1,331.4	0.00	0.00	
6,395.2	0.00	0.00	6,224.0	1,224.0	-523.8	1,331.4	0.00	0.00	Niobrara
6,400.0	0.00	0.00	6,228.8	1,224.0	-523.8	1,331.4	0.00	0.00	
6,500.0	0.00	0.00	6,328.8	1,224.0	-523.8	1,331.4	0.00	0.00	
6,600.0	0.00	0.00	6,428.8	1,224.0	-523.8	1,331.4	0.00	0.00	
6,632.2	0.00	0.00	6,461.0	1,224.0	-523.8	1,331.4	0.00	0.00	Ft. Hayes
6,657.2	0.00	0.00	6,486.0	1,224.0	-523.8	1,331.4	0.00	0.00	Codell
6,670.2	0.00	0.00	6,499.0	1,224.0	-523.8	1,331.4	0.00	0.00	Carlile
6,700.0	0.00	0.00	6,528.8	1,224.0	-523.8	1,331.4	0.00	0.00	
6,710.2	0.00	0.00	6,539.0	1,224.0	-523.8	1,331.4	0.00	0.00	Greenhorn
6,800.0	0.00	0.00	6,628.8	1,224.0	-523.8	1,331.4	0.00	0.00	
6,817.2	0.00	0.00	6,646.0	1,224.0	-523.8	1,331.4	0.00	0.00	TD @ 6,817.2' MD

Targets									
Target Name									
- hit/miss target	Dip Angle (°)	Dip Dir. (°)	TVD (ft)	+N/-S (ft)	+E/-W (ft)	Northing (ft)	Easting (ft)	Latitude	Longitude
- Shape									
Antelope H-29 TGT	0.00	0.00	6,024.0	1,224.0	-523.8	1,380,057.39	3,319,524.56	40.370980	-104.353220
- plan hits target center									
- Point									
Antelope H-29 PBHL	0.00	0.00	6,646.0	1,224.0	-523.8	1,380,057.39	3,319,524.56	40.370980	-104.353220
- plan hits target center									
- Circle (radius 50.0)									

Cathedral Energy Services

Planning Report

Database:	USA EDM 5000 Multi Users DB	Local Co-ordinate Reference:	Well Antelope H-29
Company:	Bonanza Creek Energy Operating Company, LLC	TVD Reference:	KBE @ 4599.0ft (Original Well Elev)
Project:	Weld County	MD Reference:	KBE @ 4599.0ft (Original Well Elev)
Site:	Antelope I 29 Pad	North Reference:	True
Well:	Antelope H-29	Survey Calculation Method:	Minimum Curvature
Wellbore:	OH		
Design:	Plan #1		

Formations						
Measured Depth (ft)	Vertical Depth (ft)	Name	Lithology	Dip (°)	Dip Direction (°)	
3,415.2	3,329.0	Parkman				
4,124.9	4,014.0	Sussex				
6,395.2	6,224.0	Niobrara				
6,632.2	6,461.0	Ft. Hayes				
6,657.2	6,486.0	Codell				
6,670.2	6,499.0	Carlile				
6,710.2	6,539.0	Greenhorn				

Plan Annotations					
Measured Depth (ft)	Vertical Depth (ft)	Local Coordinates			
		+N/-S (ft)	+E/-W (ft)	Comment	
600.0	600.0	0.0	0.0	KOP @ 600'	
1,105.1	1,099.3	61.1	-26.1	EOB @ Inc. = 15.15°	
5,690.0	5,524.7	1,163.0	-497.7	Start 3° Drop	
6,195.2	6,024.0	1,224.0	-523.8	EOD @ Inc. = 0°	
6,817.2	6,646.0	1,224.0	-523.8	TD @ 6,817.2' MD	

Bonanza Creek Energy Operating Company, LLC

**Weld County
Antelope I 29 Pad
Antelope H-29
OH
Plan #1**

Anticollision Report

13 January, 2012

Cathedral Energy Services

Anticollision Report

Company:	Bonanza Creek Energy Operating Company, LLC	Local Co-ordinate Reference:	Well Antelope H-29
Project:	Weld County	TVD Reference:	KBE @ 4599.0ft (Original Well Elev)
Reference Site:	Antelope I 29 Pad	MD Reference:	KBE @ 4599.0ft (Original Well Elev)
Site Error:	0.0ft	North Reference:	True
Reference Well:	Antelope H-29	Survey Calculation Method:	Minimum Curvature
Well Error:	0.0ft	Output errors are at	2.00 sigma
Reference Wellbore	OH	Database:	USA EDM 5000 Multi Users DB
Reference Design:	Plan #1	Offset TVD Reference:	Offset Datum

Reference	Plan #1		
Filter type:	NO GLOBAL FILTER: Using user defined selection & filtering criteria		
Interpolation Method:	MD Interval 100.0ft	Error Model:	Systematic Ellipse
Depth Range:	Unlimited	Scan Method:	Closest Approach 3D
Results Limited by:	Maximum center-center distance of 500.0ft	Error Surface:	Elliptical Conic
Warning Levels Evaluated at:	2.00 Sigma		

Survey Tool Program		Date	1/13/2012		
From (ft)	To (ft)	Survey (Wellbore)	Tool Name	Description	
0.0	6,817.2	Plan #1 (OH)	MWD	Geolink MWD	

Summary						
Site Name	Reference Measured Depth (ft)	Offset Measured Depth (ft)	Distance Between Centres (ft)	Between Ellipses (ft)	Separation Factor	Warning
Offset Well - Wellbore - Design						
Antelope G 29 Pad						
Antelope 11-29 (G 29 Pad) - DD - DD						Out of range
Antelope 12-29 (G 29 Pad) - DD - DD						Out of range
Antelope 21-29 (G29 Pad) - DD - DD						Out of range
Antelope 22-29 (G 29 Pad) - DD - DD						Out of range
Antelope G 29 (G 29 Pad) - DD - DD						Out of range
Antelope I 29 Pad						
Antelope 13-29 (I 29 Pad) - DD - DD	0.0	2.0	45.9			
Antelope 13-29 (I 29 Pad) - DD - DD	679.7	683.2	43.3	43.3	10,000.000	CC, ES
Antelope 14-29 (I 29 Pad) - DD - DD	0.0	2.0	84.2			
Antelope 23-29 (I 29 Pad) - DD - DD	0.0	2.0	58.6			
Antelope 24-29 (I 29 Pad) - DD - DD	0.0	2.0	99.8			
Antelope I-29 (I 29 Pad) - DD - DD	0.0	2.0	72.9			
Antelope M-29 - OH - Plan #1	0.0	0.0	83.9			
Antelope M-29 - OH - Plan #1	600.0	600.0	83.9	83.9	10,000.000	CC, ES
Antelope N-29 - OH - Plan #1	0.0	0.0	97.6			
Antelope N-29 - OH - Plan #1	600.0	600.0	97.6	97.6	10,000.000	CC, ES

Cathedral Energy Services

Anticollision Report

Company:	Bonanza Creek Energy Operating Company, LLC	Local Co-ordinate Reference:	Well Antelope H-29
Project:	Weld County	TVD Reference:	KBE @ 4599.0ft (Original Well Elev)
Reference Site:	Antelope I 29 Pad	MD Reference:	KBE @ 4599.0ft (Original Well Elev)
Site Error:	0.0ft	North Reference:	True
Reference Well:	Antelope H-29	Survey Calculation Method:	Minimum Curvature
Well Error:	0.0ft	Output errors are at	2.00 sigma
Reference Wellbore	OH	Database:	USA EDM 5000 Multi Users DB
Reference Design:	Plan #1	Offset TVD Reference:	Offset Datum

Offset Design Antelope I 29 Pad - Antelope 13-29 (I 29 Pad) - DD - DD													Offset Site Error:	0.0 ft
Survey Program: 469-MWD													Offset Well Error:	0.0 ft
Reference		Offset		Semi Major Axis			Distance							
Measured Depth (ft)	Vertical Depth (ft)	Measured Depth (ft)	Vertical Depth (ft)	Reference (ft)	Offset (ft)	Highside Toolface (°)	Offset Wellbore Centre +N/-S (ft)	+E/-W (ft)	Between Centres (ft)	Between Ellipses (ft)	Total Uncertainty Axis	Separation Factor	Warning	
0.0	0.0	2.0	2.0	0.0	0.0	-162.32	-43.7	-13.9	45.9					
100.0	100.0	102.0	102.0	0.2	0.2	-162.30	-43.7	-14.0	45.9	45.9	0.00	N/A		
200.0	200.0	202.0	202.0	0.3	0.3	-162.23	-43.7	-14.0	45.9	45.9	0.00	N/A		
300.0	300.0	302.0	302.0	0.5	0.5	-162.12	-43.7	-14.1	45.9	45.9	0.00	N/A		
400.0	400.0	402.0	402.0	0.7	0.7	-161.95	-43.7	-14.2	45.9	45.9	0.00	N/A		
500.0	500.0	502.3	502.3	0.9	0.9	-161.47	-43.5	-14.6	45.8	45.8	0.00	N/A		
600.0	600.0	603.1	603.0	1.0	1.0	-156.82	-40.5	-17.4	44.1	44.1	0.00	N/A		
679.7	679.7	683.2	682.8	1.2	1.2	-127.05	-36.0	-22.2	43.3	43.3	0.00	N/A CC, ES		
700.0	700.0	703.6	703.1	1.2	1.3	-125.21	-34.4	-23.7	43.3	43.3	0.00	N/A		
800.0	799.6	803.8	802.3	1.4	1.5	-115.58	-24.2	-33.7	44.9	44.9	0.00	N/A		
900.0	898.8	902.8	899.5	1.6	1.9	-106.83	-10.7	-47.1	49.8	49.8	0.00	N/A		
1,000.0	997.1	1,000.6	994.5	2.0	2.3	-101.14	4.0	-64.7	59.4	59.4	0.00	N/A		
1,100.0	1,094.3	1,097.3	1,087.6	2.3	2.7	-98.95	18.8	-85.9	73.5	73.5	0.00	N/A		
1,200.0	1,190.8	1,193.0	1,179.4	2.8	3.2	-99.30	31.9	-110.0	91.5	91.5	0.00	N/A		
1,300.0	1,287.4	1,290.2	1,272.4	3.2	3.7	-100.03	43.1	-135.7	111.8	111.8	0.00	N/A		
1,400.0	1,383.9	1,388.3	1,366.7	3.7	4.1	-101.17	53.3	-160.9	132.1	132.1	0.00	N/A		
1,500.0	1,480.4	1,486.6	1,461.5	4.1	4.6	-102.60	62.5	-185.0	152.2	152.2	0.00	N/A		
1,600.0	1,576.9	1,587.5	1,559.3	4.6	5.0	-104.29	71.2	-208.2	171.6	171.6	0.00	N/A		
1,700.0	1,673.4	1,689.9	1,658.6	5.1	5.5	-105.36	82.1	-230.7	189.0	189.0	0.00	N/A		
1,800.0	1,770.0	1,788.3	1,754.0	5.5	6.0	-106.08	93.6	-251.7	205.3	205.3	0.00	N/A		
1,900.0	1,866.5	1,891.4	1,854.4	6.0	6.4	-107.00	105.6	-272.4	220.7	220.7	0.00	N/A		
2,000.0	1,963.0	1,991.6	1,952.2	6.5	6.8	-108.13	117.1	-290.5	234.9	234.9	0.00	N/A		
2,100.0	2,059.5	2,091.3	2,049.5	7.0	7.3	-108.96	129.2	-308.8	248.8	248.8	0.00	N/A		
2,200.0	2,156.1	2,193.0	2,148.1	7.5	7.7	-109.16	143.9	-328.6	262.0	262.0	0.00	N/A		
2,300.0	2,252.6	2,292.9	2,245.4	8.0	8.2	-109.63	157.9	-346.6	274.5	274.5	0.00	N/A		
2,400.0	2,349.1	2,388.8	2,338.8	8.4	8.6	-110.06	171.0	-364.0	287.4	287.4	0.00	N/A		
2,500.0	2,445.6	2,483.0	2,430.2	8.9	9.0	-110.28	183.2	-383.0	302.1	302.1	0.00	N/A		
2,600.0	2,542.1	2,582.3	2,526.9	9.4	9.4	-110.72	195.0	-402.5	317.2	317.2	0.00	N/A		
2,700.0	2,638.7	2,679.6	2,621.9	9.9	9.9	-111.31	205.6	-420.8	332.5	332.5	0.00	N/A		
2,800.0	2,735.2	2,776.7	2,716.2	10.4	10.3	-111.55	217.0	-440.8	348.4	348.4	0.00	N/A		
2,900.0	2,831.7	2,875.0	2,811.7	10.9	10.8	-111.84	228.2	-460.8	364.5	364.5	0.00	N/A		
3,000.0	2,928.2	2,973.5	2,907.5	11.4	11.2	-112.07	239.3	-481.2	380.8	380.8	0.00	N/A		
3,100.0	3,024.8	3,073.4	3,005.0	11.8	11.6	-112.60	249.4	-500.2	396.9	396.9	0.00	N/A		
3,200.0	3,121.3	3,171.9	3,101.7	12.3	12.0	-113.38	258.0	-517.2	412.8	412.8	0.00	N/A		
3,300.0	3,217.8	3,272.5	3,200.4	12.8	12.3	-114.12	266.8	-534.6	428.8	428.8	0.00	N/A		
3,400.0	3,314.3	3,372.5	3,298.4	13.3	12.8	-114.73	276.4	-551.9	444.2	444.2	0.00	N/A		
3,500.0	3,410.8	3,464.8	3,388.3	13.8	13.2	-114.94	286.6	-570.0	460.1	460.1	0.00	N/A		
3,600.0	3,507.4	3,558.8	3,479.3	14.3	13.6	-114.84	297.4	-591.1	477.5	477.5	0.00	N/A		
3,700.0	3,603.9	3,656.3	3,573.6	14.8	14.1	-114.71	308.4	-613.6	495.4	495.4	0.00	N/A		

Cathedral Energy Services

Anticollision Report

Company:	Bonanza Creek Energy Operating Company, LLC	Local Co-ordinate Reference:	Well Antelope H-29
Project:	Weld County	TVD Reference:	KBE @ 4599.0ft (Original Well Elev)
Reference Site:	Antelope I 29 Pad	MD Reference:	KBE @ 4599.0ft (Original Well Elev)
Site Error:	0.0ft	North Reference:	True
Reference Well:	Antelope H-29	Survey Calculation Method:	Minimum Curvature
Well Error:	0.0ft	Output errors are at	2.00 sigma
Reference Wellbore	OH	Database:	USA EDM 5000 Multi Users DB
Reference Design:	Plan #1	Offset TVD Reference:	Offset Datum

Offset Design Antelope I 29 Pad - Antelope 14-29 (I 29 Pad) - DD - DD													Offset Site Error:	0.0 ft
Survey Program: 471-MWD													Offset Well Error:	0.0 ft
Reference		Offset		Semi Major Axis			Distance						Warning	
Measured Depth (ft)	Vertical Depth (ft)	Measured Depth (ft)	Vertical Depth (ft)	Reference (ft)	Offset (ft)	Highside Toolface (°)	Offset Wellbore Centre +N/-S (ft)	+E/-W (ft)	Between Centres (ft)	Between Ellipses (ft)	Total Uncertainty Axis	Separation Factor		
0.0	0.0	2.0	2.0	0.0	0.0	174.30	-83.8	8.4	84.2					
100.0	100.0	102.0	102.0	0.2	0.2	174.29	-83.8	8.4	84.2	84.2	0.00	N/A		
200.0	200.0	202.0	202.0	0.3	0.3	174.25	-83.8	8.4	84.2	84.2	0.00	N/A		
300.0	300.0	302.0	302.0	0.5	0.5	174.19	-83.8	8.5	84.3	84.3	0.00	N/A		
400.0	400.0	402.0	402.0	0.7	0.7	174.11	-83.8	8.7	84.3	84.3	0.00	N/A		
442.7	442.7	444.6	444.6	0.8	0.8	174.06	-83.8	8.7	84.3	84.3	0.00	N/A		
500.0	500.0	500.9	500.9	0.9	0.9	174.08	-84.1	8.7	84.5	84.5	0.00	N/A		
600.0	600.0	598.6	598.5	1.0	1.0	175.41	-87.2	7.0	87.5	87.5	0.00	N/A		
700.0	700.0	697.1	696.7	1.2	1.2	-157.78	-91.8	0.7	94.4	94.4	0.00	N/A		
800.0	799.6	791.1	790.0	1.4	1.5	-153.91	-98.9	-8.9	109.2	109.2	0.00	N/A		
900.0	898.8	881.7	879.2	1.6	1.7	-151.77	-110.7	-18.7	134.4	134.4	0.00	N/A		
1,000.0	997.1	972.6	968.1	2.0	2.1	-150.14	-125.6	-30.8	167.5	167.5	0.00	N/A		
1,100.0	1,094.3	1,064.1	1,056.8	2.3	2.4	-148.58	-141.3	-46.2	206.1	206.1	0.00	N/A		
1,200.0	1,190.8	1,154.8	1,144.5	2.8	2.9	-147.64	-156.7	-64.0	247.0	247.0	0.00	N/A		
1,300.0	1,287.4	1,241.9	1,227.9	3.2	3.3	-146.39	-171.6	-83.9	288.7	288.7	0.00	N/A		
1,400.0	1,383.9	1,323.6	1,305.4	3.7	3.8	-145.15	-187.0	-104.6	332.4	332.4	0.00	N/A		
1,500.0	1,480.4	1,415.8	1,392.7	4.1	4.3	-144.00	-205.0	-128.4	377.0	377.0	0.00	N/A		
1,600.0	1,576.9	1,511.4	1,483.6	4.6	4.8	-143.24	-222.9	-151.8	420.7	420.7	0.00	N/A		
1,700.0	1,673.4	1,605.0	1,573.2	5.1	5.3	-142.83	-239.5	-173.2	463.2	463.2	0.00	N/A		

Cathedral Energy Services

Anticollision Report

Company:	Bonanza Creek Energy Operating Company, LLC	Local Co-ordinate Reference:	Well Antelope H-29
Project:	Weld County	TVD Reference:	KBE @ 4599.0ft (Original Well Elev)
Reference Site:	Antelope I 29 Pad	MD Reference:	KBE @ 4599.0ft (Original Well Elev)
Site Error:	0.0ft	North Reference:	True
Reference Well:	Antelope H-29	Survey Calculation Method:	Minimum Curvature
Well Error:	0.0ft	Output errors are at	2.00 sigma
Reference Wellbore	OH	Database:	USA EDM 5000 Multi Users DB
Reference Design:	Plan #1	Offset TVD Reference:	Offset Datum

Offset Design Antelope I 29 Pad - Antelope 23-29 (I 29 Pad) - DD - DD												Offset Site Error: 0.0 ft	
Survey Program: 469-MWD												Offset Well Error: 0.0 ft	
Reference		Offset		Semi Major Axis			Distance					Warning	
Measured Depth (ft)	Vertical Depth (ft)	Measured Depth (ft)	Vertical Depth (ft)	Reference (ft)	Offset (ft)	Highside Toolface (°)	Offset Wellbore Centre +N/-S (ft)	+E/-W (ft)	Between Centres (ft)	Between Ellipses (ft)	Total Uncertainty Axis		Separation Factor
0.0	0.0	2.0	2.0	0.0	0.0	-174.54	-58.3	-5.6	58.6				
100.0	100.0	102.0	102.0	0.2	0.2	-174.53	-58.3	-5.6	58.6	58.6	0.00	N/A	
200.0	200.0	201.9	201.9	0.3	0.3	-174.52	-58.4	-5.6	58.7	58.7	0.00	N/A	
300.0	300.0	301.9	301.9	0.5	0.5	-174.51	-58.6	-5.6	58.9	58.9	0.00	N/A	
400.0	400.0	401.8	401.8	0.7	0.7	-174.48	-58.9	-5.7	59.2	59.2	0.00	N/A	
500.0	500.0	501.8	501.8	0.9	0.9	-174.70	-59.2	-5.5	59.5	59.5	0.00	N/A	
600.0	600.0	602.3	602.3	1.0	1.0	-178.37	-59.8	-1.7	59.8	59.8	0.00	N/A	
618.0	618.0	620.6	620.5	1.1	1.1	-156.25	-59.7	-0.6	59.8	59.8	0.00	N/A	
700.0	700.0	703.7	703.3	1.2	1.2	-162.88	-58.0	5.4	60.8	60.8	0.00	N/A	
800.0	799.6	805.2	804.2	1.4	1.5	-173.97	-53.0	15.2	65.5	65.5	0.00	N/A	
900.0	898.8	905.7	903.6	1.6	1.7	173.86	-43.2	27.1	74.3	74.3	0.00	N/A	
1,000.0	997.1	1,005.4	1,001.3	2.0	2.1	162.65	-29.7	41.2	89.2	89.2	0.00	N/A	
1,100.0	1,094.3	1,103.9	1,097.7	2.3	2.4	155.38	-14.4	54.3	109.0	109.0	0.00	N/A	
1,200.0	1,190.8	1,201.5	1,193.3	2.8	2.7	151.31	1.0	66.6	131.8	131.8	0.00	N/A	
1,300.0	1,287.4	1,298.8	1,288.7	3.2	3.1	148.56	16.3	78.4	154.6	154.6	0.00	N/A	
1,400.0	1,383.9	1,396.7	1,384.6	3.7	3.5	146.49	31.9	90.2	177.5	177.5	0.00	N/A	
1,500.0	1,480.4	1,495.7	1,481.7	4.1	3.8	145.02	47.6	101.2	199.9	199.9	0.00	N/A	
1,600.0	1,576.9	1,595.7	1,579.9	4.6	4.2	144.00	63.5	111.2	221.4	221.4	0.00	N/A	
1,700.0	1,673.4	1,688.4	1,671.1	5.1	4.5	143.38	77.5	120.4	243.3	243.3	0.00	N/A	
1,800.0	1,770.0	1,782.1	1,763.3	5.5	4.8	142.99	90.3	130.9	267.0	267.0	0.00	N/A	
1,900.0	1,866.5	1,882.0	1,861.7	6.0	5.1	142.72	103.4	142.1	291.0	291.0	0.00	N/A	
2,000.0	1,963.0	1,970.6	1,949.0	6.5	5.5	142.53	114.7	152.5	315.6	315.6	0.00	N/A	
2,100.0	2,059.5	2,068.6	2,045.5	7.0	5.8	142.38	126.4	165.1	341.6	341.6	0.00	N/A	
2,200.0	2,156.1	2,167.7	2,143.3	7.5	6.1	142.44	137.5	176.7	366.8	366.8	0.00	N/A	
2,300.0	2,252.6	2,260.2	2,234.6	8.0	6.4	142.49	147.8	187.6	392.3	392.3	0.00	N/A	
2,400.0	2,349.1	2,352.8	2,325.6	8.4	6.8	142.33	158.8	200.1	418.8	418.8	0.00	N/A	
2,500.0	2,445.6	2,452.3	2,423.5	8.9	7.1	142.19	170.5	213.7	445.5	445.5	0.00	N/A	
2,600.0	2,542.1	2,555.7	2,525.2	9.4	7.5	142.02	183.6	226.8	471.0	471.0	0.00	N/A	
2,700.0	2,638.7	2,653.4	2,621.3	9.9	7.8	141.83	196.6	238.8	495.7	495.7	0.00	N/A	

Cathedral Energy Services

Anticollision Report

Company:	Bonanza Creek Energy Operating Company, LLC	Local Co-ordinate Reference:	Well Antelope H-29
Project:	Weld County	TVD Reference:	KBE @ 4599.0ft (Original Well Elev)
Reference Site:	Antelope I 29 Pad	MD Reference:	KBE @ 4599.0ft (Original Well Elev)
Site Error:	0.0ft	North Reference:	True
Reference Well:	Antelope H-29	Survey Calculation Method:	Minimum Curvature
Well Error:	0.0ft	Output errors are at	2.00 sigma
Reference Wellbore	OH	Database:	USA EDM 5000 Multi Users DB
Reference Design:	Plan #1	Offset TVD Reference:	Offset Datum

Offset Design Antelope I 29 Pad - Antelope 24-29 (I 29 Pad) - DD - DD													Offset Site Error:	0.0 ft
Survey Program: 471-MWD													Offset Well Error:	0.0 ft
Reference		Offset		Semi Major Axis			Distance					Separation Factor	Warning	
Measured Depth (ft)	Vertical Depth (ft)	Measured Depth (ft)	Vertical Depth (ft)	Reference (ft)	Offset (ft)	Highside Toolface (°)	Offset Wellbore Centre +N/-S (ft)	+E/-W (ft)	Between Centres (ft)	Between Ellipses (ft)	Total Uncertainty Axis			
0.0	0.0	2.0	2.0	0.0	0.0	170.35	-98.4	16.7	99.8					
100.0	100.0	101.8	101.8	0.2	0.2	170.32	-98.5	16.8	99.9	99.9	0.00	N/A		
200.0	200.0	201.5	201.5	0.3	0.3	170.23	-98.8	17.0	100.3	100.3	0.00	N/A		
300.0	300.0	301.3	301.3	0.5	0.5	170.08	-99.3	17.4	100.8	100.8	0.00	N/A		
400.0	400.0	401.0	401.0	0.7	0.7	169.87	-100.1	17.9	101.7	101.7	0.00	N/A		
500.0	500.0	499.0	499.0	0.9	0.9	169.59	-101.3	18.6	103.0	103.0	0.00	N/A		
600.0	600.0	592.9	592.7	1.0	1.1	168.83	-106.4	21.0	108.8	108.8	0.00	N/A		
700.0	700.0	686.2	685.4	1.2	1.3	-169.13	-116.1	25.0	122.4	122.4	0.00	N/A		
800.0	799.6	777.1	775.1	1.4	1.6	-170.70	-129.5	30.8	145.9	145.9	0.00	N/A		
900.0	898.8	864.6	860.7	1.6	1.9	-172.07	-146.1	37.6	178.7	178.7	0.00	N/A		
1,000.0	997.1	947.4	941.0	2.0	2.2	-172.69	-165.4	43.7	220.3	220.3	0.00	N/A		
1,100.0	1,094.3	1,036.9	1,027.5	2.3	2.6	-173.51	-187.4	51.6	268.0	268.0	0.00	N/A		
1,200.0	1,190.8	1,119.2	1,106.8	2.8	3.0	-174.40	-207.5	59.8	318.5	318.5	0.00	N/A		
1,300.0	1,287.4	1,196.1	1,180.6	3.2	3.4	-174.95	-227.7	67.4	370.6	370.6	0.00	N/A		
1,400.0	1,383.9	1,274.2	1,255.0	3.7	3.8	-175.73	-249.2	77.8	424.7	424.7	0.00	N/A		
1,500.0	1,480.4	1,357.1	1,333.6	4.1	4.3	-176.71	-271.7	91.2	479.5	479.5	0.00	N/A		

Cathedral Energy Services

Anticollision Report

Company:	Bonanza Creek Energy Operating Company, LLC	Local Co-ordinate Reference:	Well Antelope H-29
Project:	Weld County	TVD Reference:	KBE @ 4599.0ft (Original Well Elev)
Reference Site:	Antelope I 29 Pad	MD Reference:	KBE @ 4599.0ft (Original Well Elev)
Site Error:	0.0ft	North Reference:	True
Reference Well:	Antelope H-29	Survey Calculation Method:	Minimum Curvature
Well Error:	0.0ft	Output errors are at	2.00 sigma
Reference Wellbore	OH	Database:	USA EDM 5000 Multi Users DB
Reference Design:	Plan #1	Offset TVD Reference:	Offset Datum

Offset Design Antelope I 29 Pad - Antelope I-29 (I 29 Pad) - DD - DD													Offset Site Error:	0.0 ft
Survey Program: 471-MWD													Offset Well Error:	0.0 ft
Reference		Offset		Semi Major Axis		Highside Toolface (°)	Distance		Total Uncertainty Axis	Separation Factor	Warning			
Measured Depth (ft)	Vertical Depth (ft)	Measured Depth (ft)	Vertical Depth (ft)	Reference (ft)	Offset (ft)		Offset Wellbore Centre +N/-S (ft)	+E/-W (ft)						
0.0	0.0	2.0	2.0	0.0	0.0	177.81	-72.9	2.8	72.9					
100.0	100.0	101.7	101.7	0.2	0.2	177.93	-73.1	2.6	73.2	73.2	0.00	N/A		
200.0	200.0	201.3	201.3	0.3	0.4	178.28	-73.8	2.2	73.9	73.9	0.00	N/A		
300.0	300.0	300.9	300.9	0.5	0.5	178.84	-75.0	1.5	75.1	75.1	0.00	N/A		
400.0	400.0	400.6	400.5	0.7	0.7	179.59	-76.7	0.5	76.7	76.7	0.00	N/A		
500.0	500.0	500.2	500.1	0.9	0.9	-179.38	-78.9	-0.9	78.9	78.9	0.00	N/A		
600.0	600.0	599.4	599.2	1.0	1.1	-176.52	-81.4	-4.9	81.6	81.6	0.00	N/A		
700.0	700.0	697.5	697.0	1.2	1.3	-149.83	-85.2	-11.6	88.3	88.3	0.00	N/A		
800.0	799.6	795.7	794.8	1.4	1.5	-148.59	-90.7	-18.0	101.5	101.5	0.00	N/A		
900.0	898.8	894.3	893.0	1.6	1.7	-148.39	-96.2	-25.4	119.2	119.2	0.00	N/A		
1,000.0	997.1	991.4	989.7	2.0	2.0	-149.08	-101.6	-33.1	141.3	141.3	0.00	N/A		
1,100.0	1,094.3	1,087.0	1,084.8	2.3	2.2	-150.57	-107.4	-40.0	168.2	168.2	0.00	N/A		
1,200.0	1,190.8	1,184.1	1,181.5	2.8	2.4	-152.42	-113.3	-46.9	197.8	197.8	0.00	N/A		
1,300.0	1,287.4	1,284.7	1,281.6	3.2	2.7	-153.29	-117.5	-56.0	225.7	225.7	0.00	N/A		
1,400.0	1,383.9	1,383.0	1,379.4	3.7	2.9	-153.86	-119.8	-65.3	251.9	251.9	0.00	N/A		
1,500.0	1,480.4	1,479.1	1,475.1	4.1	3.1	-154.37	-122.0	-74.0	278.1	278.1	0.00	N/A		
1,600.0	1,576.9	1,575.6	1,571.2	4.6	3.3	-154.85	-124.3	-82.6	304.4	304.4	0.00	N/A		
1,700.0	1,673.4	1,667.0	1,662.2	5.1	3.5	-155.27	-126.9	-90.5	331.2	331.2	0.00	N/A		
1,800.0	1,770.0	1,760.6	1,755.3	5.5	3.8	-155.67	-131.2	-98.4	359.6	359.6	0.00	N/A		
1,900.0	1,866.5	1,857.1	1,851.6	6.0	4.0	-156.18	-135.5	-105.5	388.0	388.0	0.00	N/A		
2,000.0	1,963.0	1,954.1	1,948.2	6.5	4.2	-156.74	-139.6	-111.8	416.1	416.1	0.00	N/A		
2,100.0	2,059.5	2,051.1	2,045.0	7.0	4.4	-157.29	-143.5	-117.7	444.1	444.1	0.00	N/A		
2,200.0	2,156.1	2,142.5	2,136.2	7.5	4.6	-157.81	-147.3	-122.8	472.3	472.3	0.00	N/A		

Cathedral Energy Services

Anticollision Report

Company:	Bonanza Creek Energy Operating Company, LLC	Local Co-ordinate Reference:	Well Antelope H-29
Project:	Weld County	TVD Reference:	KBE @ 4599.0ft (Original Well Elev)
Reference Site:	Antelope I 29 Pad	MD Reference:	KBE @ 4599.0ft (Original Well Elev)
Site Error:	0.0ft	North Reference:	True
Reference Well:	Antelope H-29	Survey Calculation Method:	Minimum Curvature
Well Error:	0.0ft	Output errors are at	2.00 sigma
Reference Wellbore	OH	Database:	USA EDM 5000 Multi Users DB
Reference Design:	Plan #1	Offset TVD Reference:	Offset Datum

Offset Design Antelope I 29 Pad - Antelope M-29 - OH - Plan #1													Offset Site Error:	0.0 ft
Survey Program: 0-MWD													Offset Well Error:	0.0 ft
Reference		Offset		Semi Major Axis			Distance						Warning	
Measured Depth (ft)	Vertical Depth (ft)	Measured Depth (ft)	Vertical Depth (ft)	Reference (ft)	Offset (ft)	Highside Toolface (°)	Offset Wellbore Centre +N/-S (ft)	+E/-W (ft)	Between Centres (ft)	Between Ellipses (ft)	Total Uncertainty Axis	Separation Factor		
0.0	0.0	0.0	0.0	0.0	0.0	145.61	-69.2	47.4	83.9					
100.0	100.0	100.0	100.0	0.2	0.2	145.61	-69.2	47.4	83.9	83.9	0.00	N/A		
200.0	200.0	200.0	200.0	0.3	0.3	145.61	-69.2	47.4	83.9	83.9	0.00	N/A		
300.0	300.0	300.0	300.0	0.5	0.5	145.61	-69.2	47.4	83.9	83.9	0.00	N/A		
400.0	400.0	400.0	400.0	0.7	0.7	145.61	-69.2	47.4	83.9	83.9	0.00	N/A		
500.0	500.0	500.0	500.0	0.9	0.9	145.61	-69.2	47.4	83.9	83.9	0.00	N/A		
600.0	600.0	600.0	600.0	1.0	1.0	145.61	-69.2	47.4	83.9	83.9	0.00	N/A CC, ES		
700.0	700.0	701.2	701.2	1.2	1.2	167.40	-67.1	49.0	85.7	85.7	0.00	N/A		
800.0	799.6	802.0	801.7	1.4	1.4	163.61	-60.8	54.0	91.4	91.4	0.00	N/A		
900.0	898.8	902.0	900.7	1.6	1.7	158.29	-50.5	62.2	101.5	101.5	0.00	N/A		
1,000.0	997.1	1,000.6	997.7	2.0	2.0	152.47	-36.4	73.4	116.8	116.8	0.00	N/A		
1,100.0	1,094.3	1,097.6	1,092.0	2.3	2.3	146.92	-18.7	87.4	137.6	137.6	0.00	N/A		
1,200.0	1,190.8	1,192.9	1,183.4	2.8	2.8	141.98	2.4	104.1	162.1	162.1	0.00	N/A		
1,300.0	1,287.4	1,288.5	1,274.4	3.2	3.3	137.53	25.4	122.3	188.1	188.1	0.00	N/A		
1,400.0	1,383.9	1,384.2	1,365.4	3.7	3.8	134.15	48.5	140.6	214.8	214.8	0.00	N/A		
1,500.0	1,480.4	1,479.9	1,456.5	4.1	4.3	131.52	71.6	158.9	242.1	242.1	0.00	N/A		
1,600.0	1,576.9	1,575.5	1,547.5	4.6	4.8	129.42	94.7	177.2	269.8	269.8	0.00	N/A		
1,700.0	1,673.4	1,671.2	1,638.5	5.1	5.3	127.71	117.8	195.5	297.7	297.7	0.00	N/A		
1,800.0	1,770.0	1,766.9	1,729.5	5.5	5.9	126.29	140.9	213.8	325.9	325.9	0.00	N/A		
1,900.0	1,866.5	1,862.5	1,820.5	6.0	6.4	125.10	163.9	232.1	354.2	354.2	0.00	N/A		
2,000.0	1,963.0	1,958.2	1,911.6	6.5	7.0	124.09	187.0	250.4	382.6	382.6	0.00	N/A		
2,100.0	2,059.5	2,053.9	2,002.6	7.0	7.5	123.21	210.1	268.7	411.2	411.2	0.00	N/A		
2,200.0	2,156.1	2,149.5	2,093.6	7.5	8.0	122.45	233.2	287.0	439.8	439.8	0.00	N/A		
2,300.0	2,252.6	2,245.2	2,184.6	8.0	8.6	121.78	256.3	305.2	468.4	468.4	0.00	N/A		
2,400.0	2,349.1	2,340.9	2,275.6	8.4	9.1	121.19	279.4	323.5	497.2	497.2	0.00	N/A		

Cathedral Energy Services

Anticollision Report

Company:	Bonanza Creek Energy Operating Company, LLC	Local Co-ordinate Reference:	Well Antelope H-29
Project:	Weld County	TVD Reference:	KBE @ 4599.0ft (Original Well Elev)
Reference Site:	Antelope I 29 Pad	MD Reference:	KBE @ 4599.0ft (Original Well Elev)
Site Error:	0.0ft	North Reference:	True
Reference Well:	Antelope H-29	Survey Calculation Method:	Minimum Curvature
Well Error:	0.0ft	Output errors are at	2.00 sigma
Reference Wellbore	OH	Database:	USA EDM 5000 Multi Users DB
Reference Design:	Plan #1	Offset TVD Reference:	Offset Datum

Offset Design Antelope I 29 Pad - Antelope N-29 - OH - Plan #1													Offset Site Error:	0.0 ft
Survey Program: 0-MWD													Offset Well Error:	0.0 ft
Reference		Offset		Semi Major Axis			Distance						Warning	
Measured Depth (ft)	Vertical Depth (ft)	Measured Depth (ft)	Vertical Depth (ft)	Reference (ft)	Offset (ft)	Highside Toolface (°)	Offset Wellbore Centre +N/-S (ft)	+E/-W (ft)	Between Centres (ft)	Between Ellipses (ft)	Total Uncertainty Axis	Separation Factor		
0.0	0.0	0.0	0.0	0.0	0.0	145.19	-80.1	55.7	97.6					
100.0	100.0	100.0	100.0	0.2	0.2	145.19	-80.1	55.7	97.6	97.6	0.00	N/A		
200.0	200.0	200.0	200.0	0.3	0.3	145.19	-80.1	55.7	97.6	97.6	0.00	N/A		
300.0	300.0	300.0	300.0	0.5	0.5	145.19	-80.1	55.7	97.6	97.6	0.00	N/A		
400.0	400.0	400.0	400.0	0.7	0.7	145.19	-80.1	55.7	97.6	97.6	0.00	N/A		
500.0	500.0	500.0	500.0	0.9	0.9	145.19	-80.1	55.7	97.6	97.6	0.00	N/A		
600.0	600.0	600.0	600.0	1.0	1.0	145.19	-80.1	55.7	97.6	97.6	0.00	N/A CC, ES		
700.0	700.0	696.3	696.2	1.2	1.2	167.66	-80.6	58.1	102.0	102.0	0.00	N/A		
800.0	799.6	791.4	791.1	1.4	1.4	165.88	-81.9	65.1	115.1	115.1	0.00	N/A		
900.0	898.8	884.2	883.2	1.6	1.6	163.65	-84.1	76.5	137.0	137.0	0.00	N/A		
1,000.0	997.1	974.5	972.1	2.0	1.9	161.46	-87.0	91.6	167.4	167.4	0.00	N/A		
1,100.0	1,094.3	1,067.5	1,063.5	2.3	2.2	159.89	-90.3	108.9	203.9	203.9	0.00	N/A		
1,200.0	1,190.8	1,159.6	1,153.9	2.8	2.5	159.31	-93.6	126.0	243.0	243.0	0.00	N/A		
1,300.0	1,287.4	1,251.6	1,244.2	3.2	2.8	158.91	-96.8	143.0	282.1	282.1	0.00	N/A		
1,400.0	1,383.9	1,343.6	1,334.6	3.7	3.1	158.61	-100.1	160.1	321.2	321.2	0.00	N/A		
1,500.0	1,480.4	1,435.6	1,425.0	4.1	3.4	158.37	-103.4	177.2	360.3	360.3	0.00	N/A		
1,600.0	1,576.9	1,527.7	1,515.3	4.6	3.7	158.18	-106.6	194.3	399.4	399.4	0.00	N/A		
1,700.0	1,673.4	1,619.7	1,605.7	5.1	4.1	158.02	-109.9	211.3	438.5	438.5	0.00	N/A		
1,800.0	1,770.0	1,711.7	1,696.1	5.5	4.4	157.89	-113.1	228.4	477.6	477.6	0.00	N/A		

Cathedral Energy Services

Anticollision Report

Company:	Bonanza Creek Energy Operating Company, LLC	Local Co-ordinate Reference:	Well Antelope H-29
Project:	Weld County	TVD Reference:	KBE @ 4599.0ft (Original Well Elev)
Reference Site:	Antelope I 29 Pad	MD Reference:	KBE @ 4599.0ft (Original Well Elev)
Site Error:	0.0ft	North Reference:	True
Reference Well:	Antelope H-29	Survey Calculation Method:	Minimum Curvature
Well Error:	0.0ft	Output errors are at	2.00 sigma
Reference Wellbore	OH	Database:	USA EDM 5000 Multi Users DB
Reference Design:	Plan #1	Offset TVD Reference:	Offset Datum

Reference Depths are relative to KBE @ 4599.0ft (Original Well Elev)
 Offset Depths are relative to Offset Datum
 Central Meridian is -105.500000 °

Coordinates are relative to: Antelope H-29
 Coordinate System is US State Plane 1983, Colorado Northern Zone
 Grid Convergence at Surface is: 0.74°

