

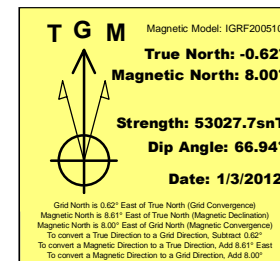
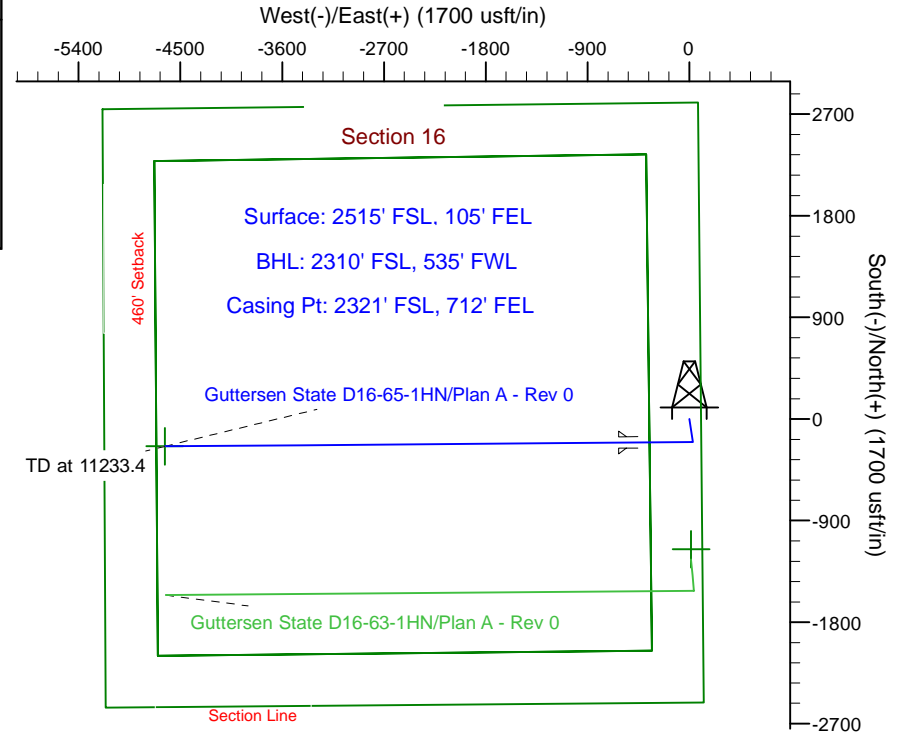
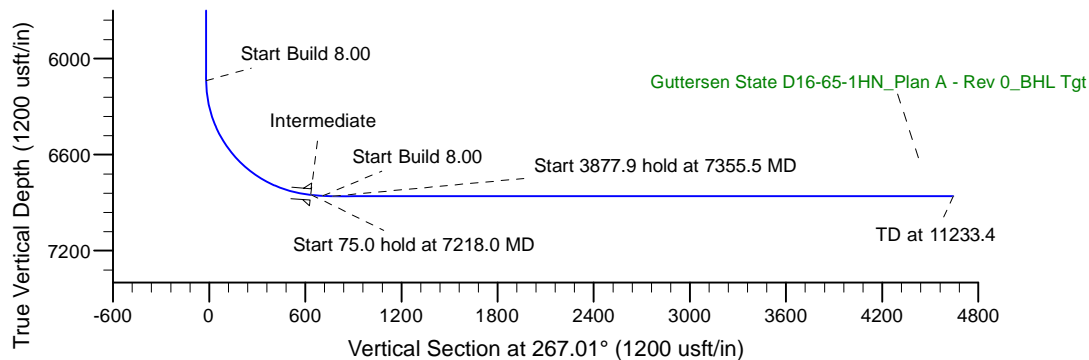
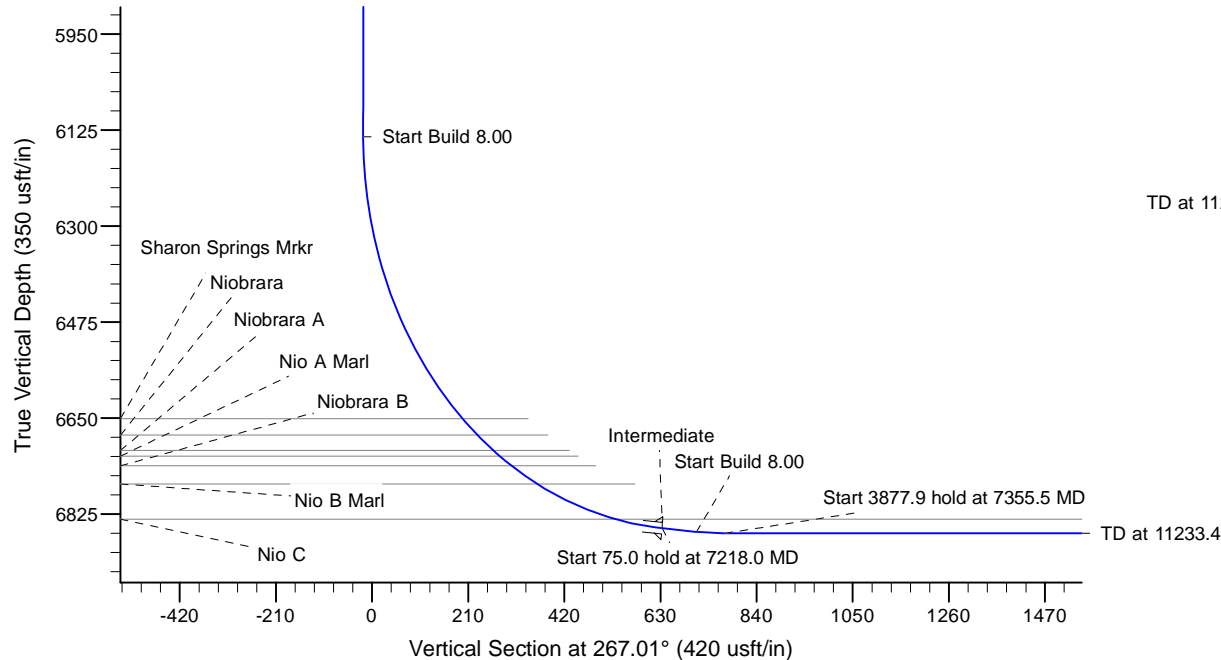
Project: Weld Co. (NAD83)  
 Site: Sec 16 T03N-R64W  
 Well: Guttarsen State D16-65-1HN  
 Wellbore: Original Drilling  
 Design: Plan A - Rev 0 (PERMITTING PLAN ONLY)

# Northern Region Drilling



## SECTION DETAILS

Sec	MD	Inc	Azi	TVD	+N/-S	+E/-W	Dleg	TFace	VSec	Target
1	0.0	0.00	0.00	0.0	0.0	0.0	0.00	0.00	0.0	
2	2500.0	0.00	0.00	2500.0	0.0	0.0	0.00	0.00	0.0	
3	2980.0	12.00	171.67	2976.5	-49.6	7.3	2.50	171.67	-4.7	
4	3494.7	12.00	171.67	3480.0	-155.4	22.7	0.00	0.00	-14.6	
5	3974.7	0.00	0.00	3956.5	-205.0	30.0	2.50	180.00	-19.3	
6	4518.3	0.00	0.00	4500.0	-205.0	30.0	0.00	0.00	-19.3	
7	6155.5	0.00	0.00	6137.3	-205.0	30.0	0.00	0.00	-19.3	
8	7218.0	85.00	269.54	6850.7	-210.3	-623.8	8.00	269.54	633.9	
9	7293.0	85.00	269.54	6857.3	-210.9	-698.5	0.00	0.00	708.5	
10	7355.5	90.00	269.54	6860.0	-211.4	-760.9	8.00	0.00	770.9	
11	11233.4	90.00	269.54	6860.0	-242.5	-4638.7	0.00	0.00	4645.0	Guttarsen State D16-65H-1N PBHL



WELL DETAILS: Guttarsen State D16-65-1HN

Ground Level: 4791.0  
 Northing 1326239.23 Easting 3266078.05 Latitude 40° 13' 30.000 N Longitude 104° 32' 49.488 W

Plan: Plan A - Rev 0 (Guttarsen State D16-65-1HN/Permitting Plan Only)

Created By: Diane Blair

Date: 16:38, January 04 2012

**OK to submit with 2A as per Noble Drilling**  
**1/5/2012 10:55**