

Project: Weld County Colorado (NAD 83)
 Site: Sec.28, T5N, R66W
 Well: West J28-65-1HN
 Wellbore: Plan A - Rev 0 (PERMITTING PLAN ONLY)
 Design: Plan A - Rev 0 Proposal

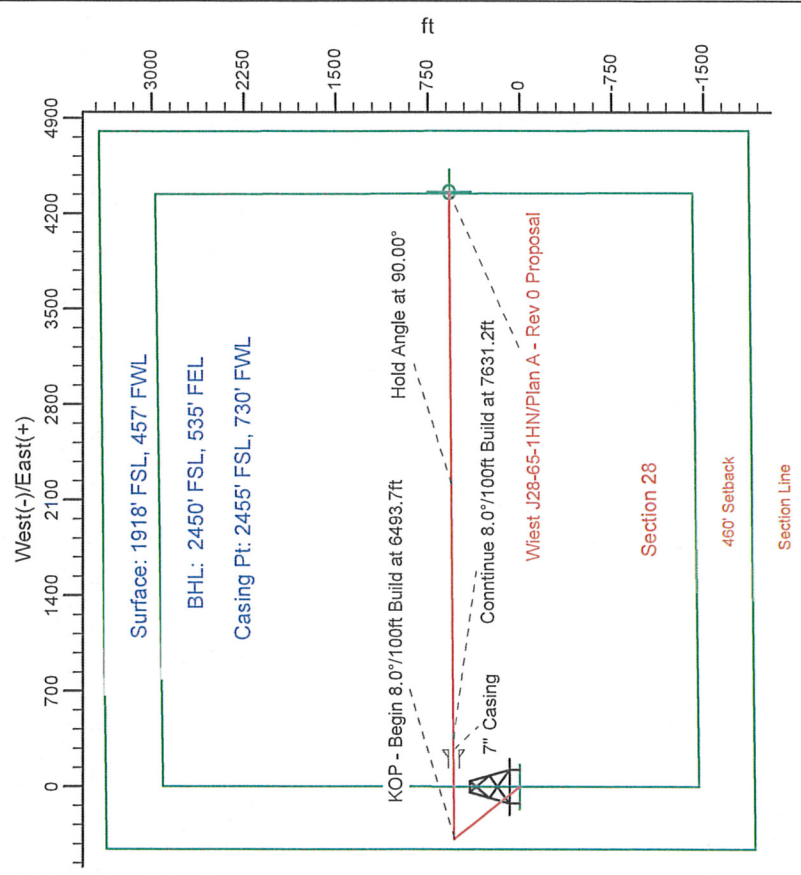
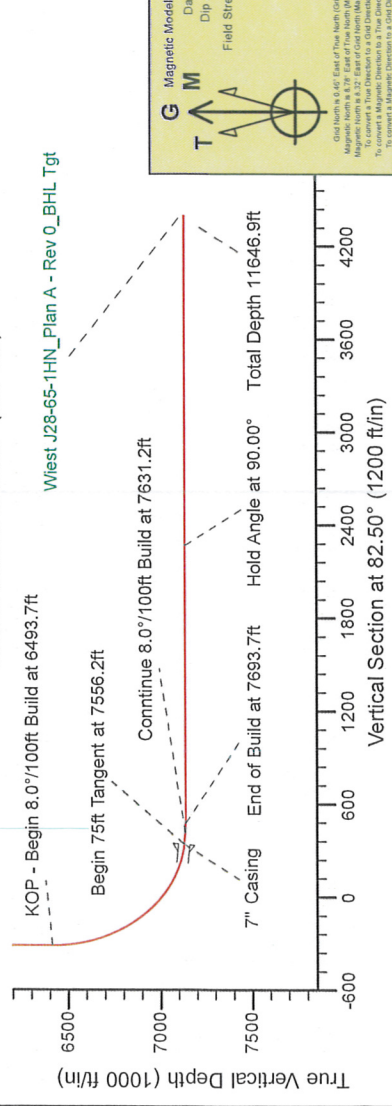
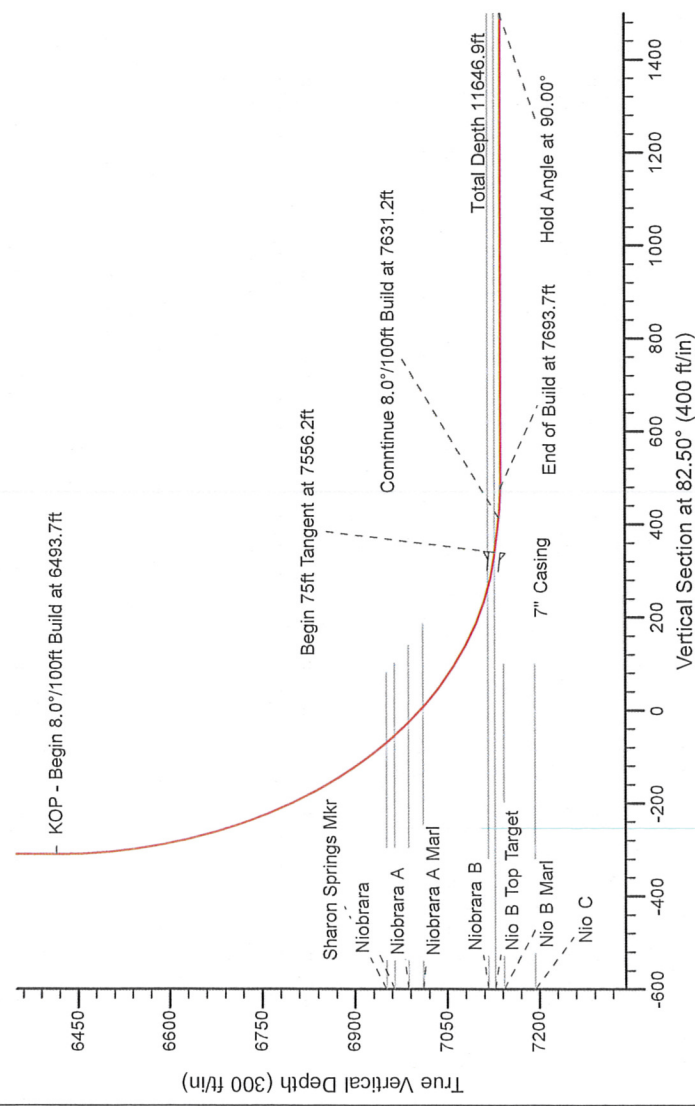
Noble Energy

HALLIBURTON
 Consulting

SECTION DETAILS

Sec	MD	Inc	Azi	TVD	+N/S	+E/W	Dleg	TFace	Vsect	Target
2	1500.0	0.00	0.00	1500.0	0.0	0.0	0.00	0.00	0.0	0.0
3	2099.9	15.00	324.32	2093.1	63.4	-45.5	2.50	324.32	-36.9	-36.9
4	4027.4	15.00	324.32	3954.9	468.6	-336.5	0.00	0.00	-272.4	-272.4
5	4627.3	0.00	0.00	4548.0	532.0	-382.0	2.50	180.00	-309.3	-309.3
6	6493.7	0.00	0.00	6414.4	532.0	-382.0	0.00	0.00	-309.3	-309.3
7	7556.2	85.00	89.48	7127.9	537.9	271.7	8.00	89.48	339.7	339.7
8	7631.2	85.00	89.49	7134.4	538.6	346.5	0.01	90.00	413.8	413.8
9	7693.7	90.00	89.49	7137.1	539.2	408.9	8.00	0.00	475.8	475.8
10	11646.9	90.00	89.49	7137.0	574.4	4361.9	0.00	-21.67	4399.6	4399.6

West J28-65-1HN_Plan A - Rev 0_BHL Tgt



WELL DETAILS: West J28-65-1HN (NAD83 Geodetic System)			
Northing	Ground Level:	Latitude	Longitude
419977.25	Easting	4863.0	
974496.50	40° 22' 6.636 N	104° 47' 32.676 W	
Plan: Plan A - Rev 0 Proposal (West J28-65-1HN/Plan A - Rev 0 (PERMITTING PLAN ONLY))			
Created By: Erika Cuauro Garcia		Date: 19:50, November 01 2011	

G Magnetic Model: IGRF200510
 Date: 11/1/2011
 Dip Angle: 67.02°
 Field Strength: 53094.7
 Old North is 6.40° East of True North (Old Convergence)
 Magnetic North is 6.32° East of True North (Magnetic Declination)
 To convert a Magnetic Direction to a True Direction, Add 6.32° East
 To convert a True Direction to a Magnetic Direction, Add 6.32°