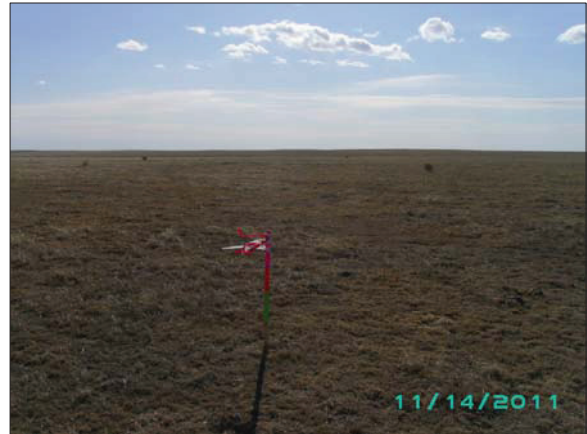


2A ATTACHMENT

6



LOOKING NORTH



LOOKING SOUTH



LOOKING EAST



LOOKING WEST

CENTER OF REFERENCE AREA

LATITUDE (NAD 83)

NORTH 40.667427 DEG.

LONGITUDE (NAD 83)

WEST 104.098499 DEG.

PHOTOS TAKEN: 11/14/2011



RIFFIN & ASSOCIATES, INC.

1414 ELK ST., SUITE 202
ROCK SPRINGS, WY 82901
(307) 362-5028

DRG JOB No. 18946

DRAWN: 11/28/11 - JMB

REFERENCE AREA PICTURES

**CHESAPEAKE ENERGY, LLC.
STATE 8-60 16-3H
SECTION 16, T8N, R60W**

REVISED: NA

**EXHIBIT
6A**