

SWEPI LP

1914 Brass Cap,
2.0' High, Pile of
Stones, S/E/W
Fence
Lat: 40.349025°
Long: 107.509222°

1914 Brass Cap,
2.3' High, Pile of
Stones
Lat: 40.349286°
Long: 107.489947°

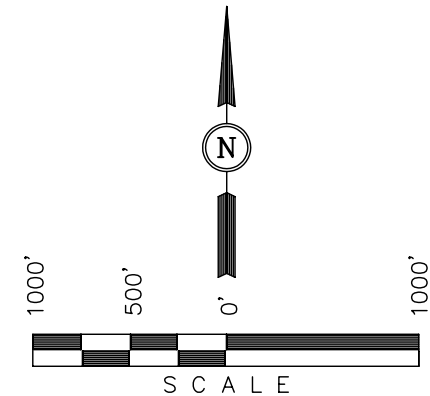
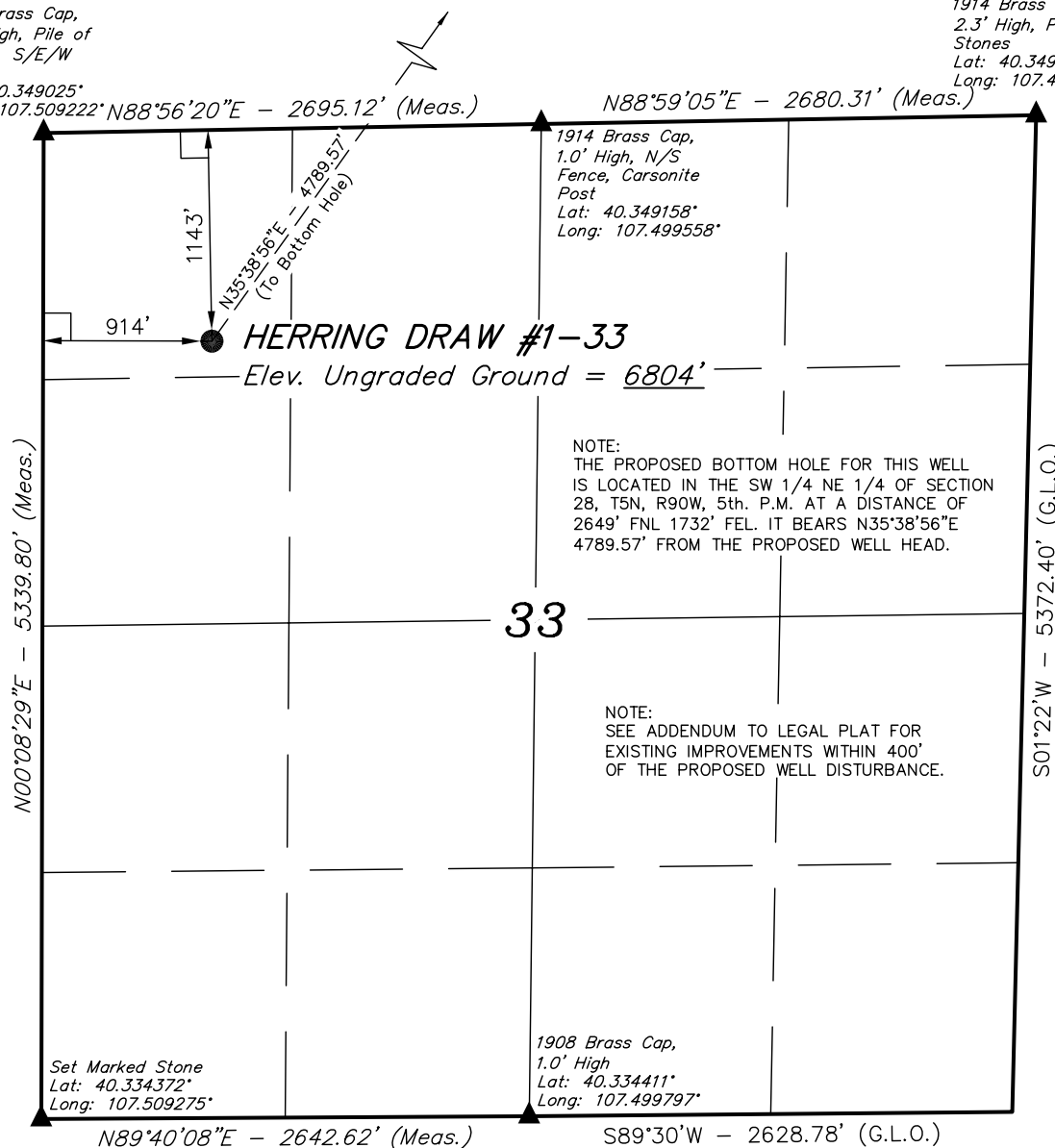
Well location, HERRING DRAW #1-33 (SURFACE LOCATION), located as shown in the NW 1/4 NW 1/4 of Section 33, T5N, R90W, 6th. P.M., Moffat County, Colorado.

BASIS OF ELEVATION

SPOT ELEVATION AT THE NORTHEAST CORNER OF SECTION 31,
T5N, R90W, 6th P.M. TAKEN FROM THE HAMILTON
QUADRANGLE, COLORADO, MOFFAT COUNTY, 7.5 MINUTE QUAD
(TOPOGRAPHIC MAP) PUBLISHED BY THE UNITED STATES
DEPARTMENT OF THE INTERIOR, GEOLOGICAL SURVEY. SAID
ELEVATION IS MARKED AS BEING 6664 FEET.

BASIS OF BEARINGS

BASIS OF BEARINGS IS A G.P.S. OBSERVATION.



CERTIFICATE

THIS IS TO CERTIFY THAT THE ABOVE PLAT WAS PREPARED FROM
FIELD NOTES OF ACTUAL SURVEYS MADE BY ME OR UNDER MY
SUPERVISION AND THAT THE SAME ARE TRUE AND CORRECT TO THE
BEST OF MY KNOWLEDGE AND BELIEF.

REGISTERED LAND SURVEYOR
REGISTRATION NO. 17492
STATE OF COLORADO
07-12-11

UTAH ENGINEERING & LAND SURVEYING
 85 SOUTH 200 EAST - VERNAL, UTAH 84078
 (435) 789-1017

LEGEND:

L = 90° SYMBOL

● = PROPOSED WELL HEAD.

▲ = SECTION CORNERS LOCATED.

PDOP = 2.1

NAD 83 (SURFACE LOCATION)

LATITUDE = 40°20'45.35" (40.345931)
LONGITUDE = 107°30'21.44" (107.505956)

NAD 27 (SURFACE LOCATION)

LATITUDE = 40°20'45.44" (40.345956)
LONGITUDE = 107°30'19.22" (107.505339)

SCALE
1" = 1000'

PARTY	D.N.	C.Z.	J.I.
-------	------	------	------

WEATHER	WARM
---------	------

DATE SURVEYED: 06-28-11	DATE DRAWN: 07-11-11
----------------------------	-------------------------

REFERENCES	G.L.O. PLAT
------------	-------------

FILE	
	SWEPI LP

T5N, R90W, 5th. P.M.

SWEPI LP

S88°19'W - 5526.84' (G.L.O.)

87°23'
(G.L.O.)

N00°56'E - 2685.87' (G.L.O.)

1914 Brass Cap,
2.0' High
Lat: 40.356658°
Long: 107.489725°

S01°17'24"W - 2687.27' (Meas.)

HERRING DRAW #1-33
Target Bottom Hole

28

1732'

180°
(G.L.O.)

NOTE:
THE PROPOSED BOTTOM HOLE BEARS N35°38'56"E
4789.57' FROM THE PROPOSED WELL HEAD WHICH
IS LOCATED IN THE NW 1/4 NW 1/4 OF SECTION
33, T5N, R90W, 6th. P.M. AT A DISTANCE OF
1143' FNL 914' FWL.

N35°38'56"E
4789.57'

1914 Brass Cap,
1.0' High, N/S
Fence, Carsonite
Post
Lat: 40.349158°
Long: 107.499558°

1914 Brass Cap,
2.3' High, Pile of
Stones
Lat: 40.349286°
Long: 107.489947°

N88°59'05"E - 2680.31' (Meas.)

1914 Brass Cap, N88°56'20"E - 2695.12' (Meas.)
2.0' High, Pile of
Stones, S/E/W
Fence
Lat: 40.349025°
Long: 107.509222°

LEGEND:

● Herring Draw #1-33

└─┘ = 90° SYMBOL

● = PROPOSED WELL HEAD.

▲ = SECTION CORNERS LOCATED.

NAD 83 (TARGET BOTTOM HOLE)

LATITUDE = 40°21'23.79" (40.356608)

LONGITUDE = 107°29'45.38" (107.495939)

NAD 27 (TARGET BOTTOM HOLE)

LATITUDE = 40°21'23.88" (40.356633)

LONGITUDE = 107°29'43.16" (107.495322)

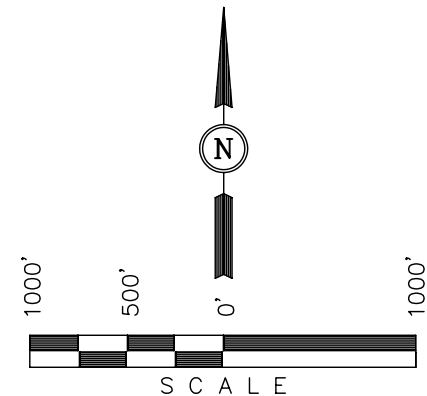
Well location, HERRING DRAW #1-33 (TARGET
BOTTOM HOLE), located as shown in the SW 1/4
NE 1/4 of Section 28, T5N, R90W, 6th. P.M.,
Moffat County, Colorado.

BASIS OF ELEVATION

SPOT ELEVATION AT THE NORTHEAST CORNER OF SECTION 31,
T5N, R90W, 6th P.M. TAKEN FROM THE HAMILTON
QUADRANGLE, COLORADO, MOFFAT COUNTY, 7.5 MINUTE QUAD
(TOPOGRAPHIC MAP) PUBLISHED BY THE UNITED STATES
DEPARTMENT OF THE INTERIOR, GEOLOGICAL SURVEY. SAID
ELEVATION IS MARKED AS BEING 6664 FEET.

BASIS OF BEARINGS

BASIS OF BEARINGS IS A G.P.S. OBSERVATION.



CERTIFICATE

THIS IS TO CERTIFY THAT THE ABOVE PLAT WAS PREPARED FROM
FIELD NOTES OF ACTUAL SURVEYS MADE BY ME OR UNDER MY
SUPERVISION AND THAT THE SAME ARE TRUE AND CORRECT TO THE
BEST OF MY KNOWLEDGE AND BELIEF.

REGISTERED LAND SURVEYOR
REGISTRATION NO. 17492
STATE OF COLORADO
07-12-11

UINTAH ENGINEERING & LAND SURVEYING
85 SOUTH 200 EAST - VERNAL, UTAH 84078
(435) 789-1017

SCALE 1" = 1000'	DATE SURVEYED: 06-28-11	DATE DRAWN: 07-11-11
PARTY D.N. C.Z. J.I.	REFERENCES G.L.O. PLAT	
WEATHER WARM	FILE SWEPI LP	

ADDENDUM TO LEGAL PLAT FOR
HERRING DRAW #1-33
SECTION 33, T5N, R90W, 6th. P.M.
1143' FNL 914' FWL

