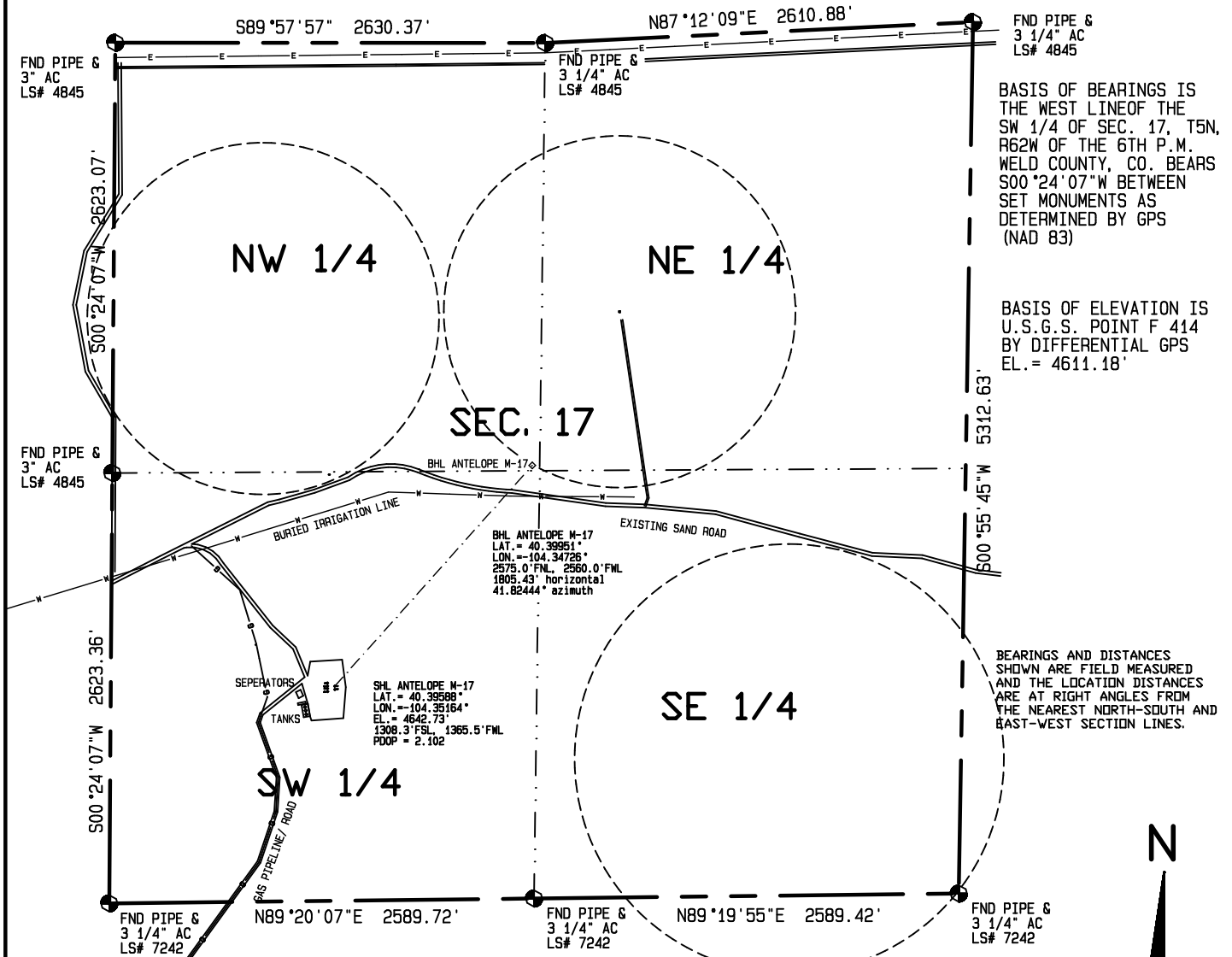


Visible improvements within 400 feet of the location include: NE corner of a tank battery berm is 196' at 237', separator berm is 200' at 253', and the service road is 178' at 287'.



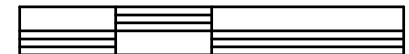
BASIS OF BEARINGS IS THE WEST LINE OF THE SW 1/4 OF SEC. 17, T5N, R62W OF THE 6TH P.M. WELD COUNTY, CO. BEARS S00°24'07"W BETWEEN SET MONUMENTS AS DETERMINED BY GPS (NAD 83)

BASIS OF ELEVATION IS U.S.G.S. POINT F 414 BY DIFFERENTIAL GPS EL. = 4611.18'

BEARINGS AND DISTANCES SHOWN ARE FIELD MEASURED AND THE LOCATION DISTANCES ARE AT RIGHT ANGLES FROM THE NEAREST NORTH-SOUTH AND EAST-WEST SECTION LINES.



1000 500 0 1000



Scale 1" = 1000'

Dan Griggs PLS# 38018

**CONTRACT SURVEYORS, LTD.**  
COMPLETE SURVEYING AND GLOBAL POSITIONING

2133 SOUTH BELLAIRE STREET #14  
DENVER COLORADO 80222  
(303) 756-3695



DATE OF FIELD WORK:

16 NOVEMBER, 2011

DATE OF DRAWING:

28 NOVEMBER, 2011

ANTELOPE M-17

NE 1/4, SW 1/4 SEC. 17, T5N, R62W

BONANZA CREEK ENERGY OPERATING COMPANY, LLC

MULTI-WELL PLAN  
PAGE 2

CSL# 10104-62

WELD COUNTY, COLORADO