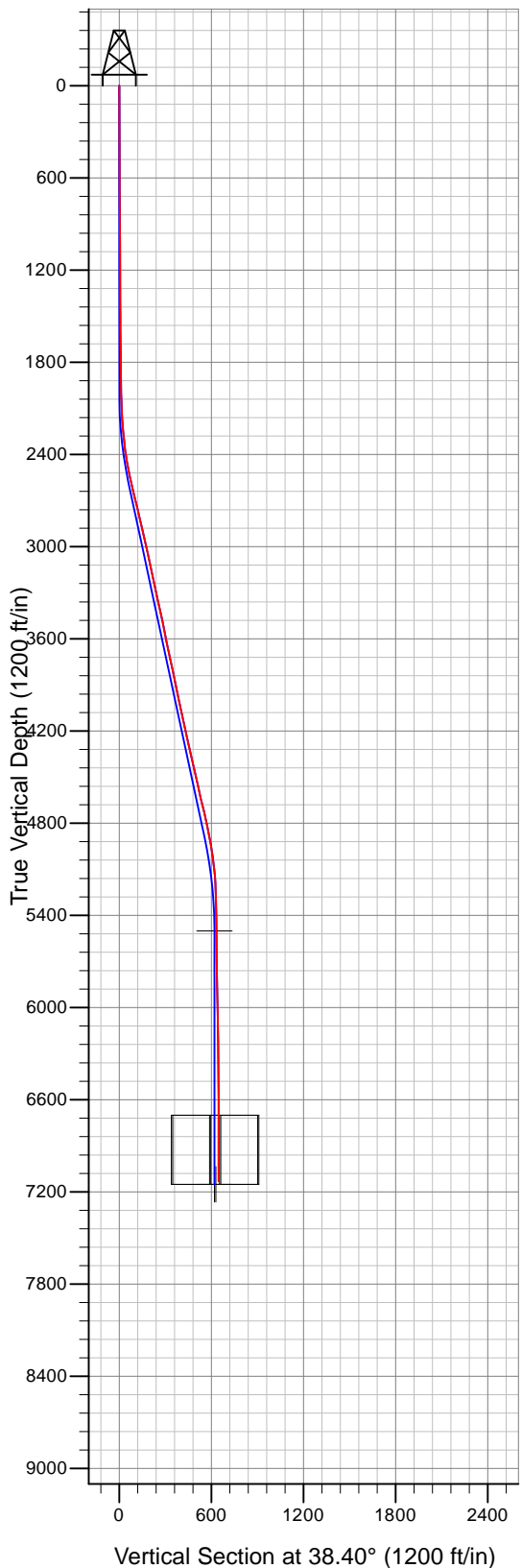
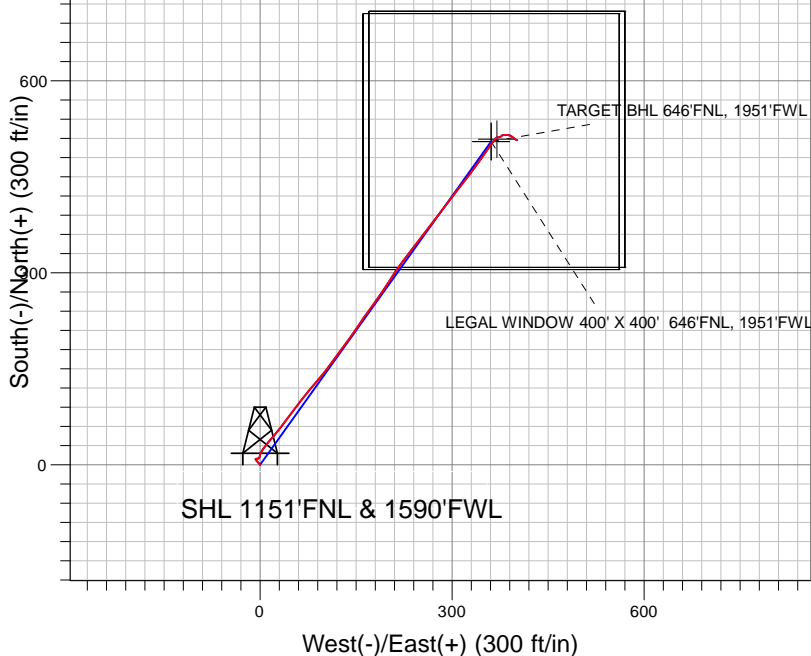


Mineral Resources Inc



Projected BHL 507'N & 402'E of surface
644'FNL & 1992'FWL



LEGEND

- ◆ Vetting #2, Vetting #2, Vetting #2 V0
- Vetting #2
- Survey #1

Final Survey Plot

Projected Final Survey -
7195'MD & 7131'TVD @ 646' VS
0.8 deg Inc 112.7 deg AZ

Project: SEC.23-T5N-R65W
Site: Vetting Pad Sec.23-T5N-R65W
Well: Vetting #2
Plan: Vetting #2



Mineral Resources Inc

SEC.23-T5N-R65W

Vetting Pad Sec.23-T5N-R65W

Vetting #2

Vetting #2

Survey: Survey #1

Standard Survey Report

12 November, 2008

Company:	Mineral Resources Inc	Local Co-ordinate Reference:	Well Vetting #2
Project:	SEC.23-T5N-R65W	TVD Reference:	WELL @ 4643.0ft (Original Well Elev)
Site:	Vetting Pad Sec.23-T5N-R65W	MD Reference:	WELL @ 4643.0ft (Original Well Elev)
Well:	Vetting #2	North Reference:	True
Wellbore:	Vetting #2	Survey Calculation Method:	Minimum Curvature
Design:	Vetting #2	Database:	EDM den0-adp01 Server Data

Project	SEC.23-T5N-R65W, Weld County, Colorado		
Map System:	US State Plane 1983	System Datum:	Mean Sea Level
Geo Datum:	North American Datum 1983		Using Well Reference Point
Map Zone:	Colorado Northern Zone		Using geodetic scale factor

Site		Vetting Pad Sec.23-T5N-R65W			
Site Position:		Northing:	1,385,642.83ft	Latitude:	40° 23' 19.536 N
From:	Lat/Long	Easting:	3,241,145.35ft	Longitude:	104° 38' 3.444 W
Position Uncertainty:	0.0 ft	Slot Radius:	"	Grid Convergence:	0.56 °

Well	Vetting #2					
Well Position	+N/-S	0.0 ft	Northing:	1,385,643.03 ft	Latitude:	40° 23' 19.536 N
	+E/-W	0.0 ft	Easting:	3,241,166.34 ft	Longitude:	104° 38' 3.173 W
Position Uncertainty		0.0 ft	Wellhead Elevation:	ft	Ground Level:	4,630.0 ft

Wellbore	Vetting #2				
Magnetics	Model Name	Sample Date	Declination (°)	Dip Angle (°)	Field Strength (nT)
	IGRF200510	10/31/2008	9.11	67.16	53,435

Design	Vetting #2			
Audit Notes:				
Version:	1.0	Phase:	ACTUAL	Tie On Depth: 0.0
Vertical Section:	Depth From (TVD) (ft)	+N/-S (ft)	+E/-W (ft)	Direction (°)
	0.0	0.0	0.0	38.40

Survey Program		Date	11/12/2008		
From (ft)	To (ft)	Survey (Wellbore)	Tool Name	Description	
555.0	7,195.0	Survey #1 (Vetting #2)	MWD	MWD - Standard	

Survey	Wellbore Data									
	Measured Depth (ft)	Inclination (°)	Azimuth (°)	Vertical Depth (ft)	+N/-S (ft)	+E/-W (ft)	Vertical Section (ft)	Dogleg Rate (°/100ft)	Build Rate (°/100ft)	Turn Rate (°/100ft)
Main Wellbore	0.0	0.00	0.00	0.0	0.0	0.0	0.0	0.00	0.00	0.00
	40.0	0.13	319.00	40.0	0.0	0.0	0.0	0.32	0.32	0.00
	80.0	0.26	319.00	80.0	0.1	-0.1	0.0	0.32	0.32	0.00
	120.0	0.39	319.00	120.0	0.3	-0.3	0.1	0.32	0.32	0.00
	160.0	0.52	319.00	160.0	0.5	-0.5	0.1	0.32	0.32	0.00
	200.0	0.65	319.00	200.0	0.9	-0.7	0.2	0.32	0.32	0.00
	240.0	0.78	319.00	240.0	1.2	-1.1	0.3	0.32	0.32	0.00
	280.0	0.91	319.00	280.0	1.7	-1.5	0.4	0.32	0.32	0.00
	320.0	1.04	319.00	320.0	2.2	-1.9	0.5	0.32	0.32	0.00
	360.0	1.17	319.00	360.0	2.8	-2.4	0.7	0.32	0.32	0.00
	400.0	1.30	319.00	400.0	3.4	-3.0	0.8	0.32	0.32	0.00
	440.0	1.43	319.00	440.0	4.1	-3.6	1.0	0.32	0.32	0.00
480.0	1.56	319.00	479.9	4.9	-4.3	1.2	0.32	0.32	0.00	

Company:	Mineral Resources Inc	Local Co-ordinate Reference:	Well Vetting #2
Project:	SEC.23-T5N-R65W	TVD Reference:	WELL @ 4643.0ft (Original Well Elev)
Site:	Vetting Pad Sec.23-T5N-R65W	MD Reference:	WELL @ 4643.0ft (Original Well Elev)
Well:	Vetting #2	North Reference:	True
Wellbore:	Vetting #2	Survey Calculation Method:	Minimum Curvature
Design:	Vetting #2	Database:	EDM den0-adp01 Server Data

Survey										
Measured Depth (ft)	Inclination (°)	Azimuth (°)	Vertical Depth (ft)	+N/-S (ft)	+E/-W (ft)	Vertical Section (ft)	Dogleg Rate (°/100ft)	Build Rate (°/100ft)	Turn Rate (°/100ft)	
520.0	1.69	319.00	519.9	5.8	-5.0	1.4	0.32	0.32	0.00	
560.0	1.74	319.67	559.9	6.7	-5.8	1.6	0.15	0.14	1.69	
600.0	1.29	327.24	599.9	7.5	-6.5	1.9	1.24	-1.14	18.92	
640.0	0.88	342.38	639.9	8.2	-6.8	2.2	1.24	-1.02	37.84	
680.0	0.61	358.96	679.9	8.7	-6.9	2.6	0.86	-0.68	41.45	
720.0	0.43	26.76	719.9	9.1	-6.8	2.9	0.76	-0.45	69.51	
760.0	0.42	60.08	759.9	9.3	-6.6	3.1	0.61	-0.02	83.29	
800.0	0.50	77.85	799.9	9.4	-6.3	3.4	0.40	0.20	44.44	
840.0	0.59	89.01	839.9	9.4	-5.9	3.7	0.35	0.23	27.89	
880.0	0.46	85.62	879.9	9.4	-5.6	3.9	0.33	-0.32	-8.46	
920.0	0.33	79.63	919.9	9.4	-5.3	4.1	0.33	-0.32	-14.98	
960.0	0.30	82.75	959.9	9.5	-5.1	4.3	0.10	-0.09	7.81	
1,000.0	0.30	90.64	999.9	9.5	-4.9	4.4	0.10	0.00	19.71	
1,040.0	0.27	95.49	1,039.9	9.5	-4.7	4.5	0.09	-0.07	12.15	
1,080.0	0.18	95.47	1,079.9	9.5	-4.5	4.6	0.21	-0.21	-0.07	
1,120.0	0.10	94.61	1,119.9	9.5	-4.4	4.7	0.20	-0.20	-2.14	
1,160.0	0.23	80.70	1,159.9	9.5	-4.3	4.7	0.33	0.31	-34.78	
1,200.0	0.36	76.74	1,199.9	9.5	-4.1	4.9	0.33	0.32	-9.92	
1,240.0	0.37	78.27	1,239.9	9.6	-3.8	5.1	0.04	0.03	3.84	
1,280.0	0.33	82.38	1,279.9	9.6	-3.6	5.3	0.12	-0.11	10.27	
1,320.0	0.33	85.06	1,319.9	9.6	-3.4	5.4	0.04	0.00	6.71	
1,360.0	0.41	83.41	1,359.9	9.7	-3.1	5.6	0.21	0.21	-4.13	
1,400.0	0.50	82.32	1,399.9	9.7	-2.8	5.9	0.21	0.21	-2.72	
1,440.0	0.44	69.32	1,439.9	9.8	-2.5	6.1	0.30	-0.15	-32.50	
1,480.0	0.40	52.73	1,479.9	9.9	-2.2	6.4	0.31	-0.09	-41.49	
1,520.0	0.40	48.84	1,519.9	10.1	-2.0	6.7	0.07	-0.01	-9.72	
1,560.0	0.40	53.40	1,559.9	10.3	-1.8	6.9	0.08	0.00	11.41	
1,600.0	0.42	51.72	1,599.9	10.4	-1.6	7.2	0.05	0.04	-4.22	
1,640.0	0.49	36.82	1,639.9	10.7	-1.4	7.5	0.35	0.19	-37.24	
1,680.0	0.59	26.43	1,679.9	11.0	-1.2	7.9	0.35	0.25	-25.96	
1,720.0	0.64	22.83	1,719.9	11.4	-1.0	8.3	0.15	0.12	-9.02	
1,760.0	0.68	20.00	1,759.9	11.8	-0.8	8.7	0.13	0.11	-7.08	
1,800.0	0.74	14.88	1,799.8	12.3	-0.7	9.2	0.22	0.16	-12.78	
1,840.0	0.83	8.98	1,839.8	12.8	-0.6	9.7	0.29	0.21	-14.76	
1,880.0	0.92	5.35	1,879.8	13.4	-0.5	10.2	0.26	0.22	-9.08	
1,920.0	1.00	5.94	1,919.8	14.1	-0.4	10.8	0.21	0.21	1.48	
1,960.0	1.09	6.44	1,959.8	14.8	-0.4	11.4	0.21	0.21	1.25	
2,000.0	1.34	16.25	1,999.8	15.6	-0.2	12.1	0.81	0.63	24.52	
2,040.0	1.65	23.68	2,039.8	16.6	0.2	13.1	0.91	0.77	18.57	
2,080.0	2.18	27.02	2,079.8	17.8	0.7	14.4	1.36	1.33	8.35	
2,120.0	2.90	27.86	2,119.7	19.4	1.6	16.1	1.81	1.81	2.12	
2,160.0	3.61	29.28	2,159.7	21.4	2.6	18.4	1.79	1.78	3.55	
2,200.0	4.29	33.87	2,199.6	23.7	4.1	21.1	1.85	1.68	11.48	
2,240.0	4.98	37.21	2,239.5	26.3	6.0	24.3	1.85	1.73	8.34	
2,280.0	5.73	38.25	2,279.3	29.3	8.3	28.1	1.90	1.89	2.60	
2,320.0	6.50	38.77	2,319.1	32.6	10.9	32.3	1.92	1.92	1.31	
2,360.0	7.32	39.64	2,358.8	36.3	13.9	37.1	2.08	2.06	2.18	
2,400.0	8.22	40.79	2,398.4	40.5	17.4	42.5	2.27	2.23	2.85	
2,440.0	9.11	41.24	2,437.9	45.0	21.4	48.6	2.25	2.25	1.12	
2,480.0	10.04	38.62	2,477.4	50.1	25.7	55.2	2.56	2.32	-6.55	
2,520.0	10.99	36.44	2,516.7	55.9	30.1	62.5	2.56	2.36	-5.44	
2,560.0	12.06	36.87	2,555.9	62.3	34.9	70.5	2.68	2.67	1.07	
2,600.0	13.16	37.82	2,594.9	69.2	40.1	79.2	2.82	2.77	2.38	
2,640.0	13.93	38.19	2,633.8	76.7	46.0	88.6	1.92	1.91	0.92	

Company:	Mineral Resources Inc	Local Co-ordinate Reference:	Well Vetting #2
Project:	SEC.23-T5N-R65W	TVD Reference:	WELL @ 4643.0ft (Original Well Elev)
Site:	Vetting Pad Sec.23-T5N-R65W	MD Reference:	WELL @ 4643.0ft (Original Well Elev)
Well:	Vetting #2	North Reference:	True
Wellbore:	Vetting #2	Survey Calculation Method:	Minimum Curvature
Design:	Vetting #2	Database:	EDM den0-adp01 Server Data

Survey									
Measured Depth (ft)	Inclination (°)	Azimuth (°)	Vertical Depth (ft)	+N/-S (ft)	+E/-W (ft)	Vertical Section (ft)	Dogleg Rate (°/100ft)	Build Rate (°/100ft)	Turn Rate (°/100ft)
2,680.0	14.22	37.93	2,672.6	84.3	52.0	98.4	0.76	0.74	-0.64
2,720.0	14.45	37.66	2,711.4	92.2	58.1	108.3	0.58	0.55	-0.67
2,760.0	13.72	37.14	2,750.2	99.9	64.0	118.0	1.84	-1.81	-1.30
2,800.0	13.00	36.57	2,789.1	107.3	69.5	127.3	1.84	-1.81	-1.44
2,840.0	12.82	38.29	2,828.1	114.4	74.9	136.1	1.06	-0.46	4.30
2,880.0	12.86	40.89	2,867.1	121.2	80.5	145.0	1.45	0.11	6.49
2,920.0	12.96	42.07	2,906.1	127.9	86.5	153.9	0.71	0.26	2.97
2,960.0	13.13	40.96	2,945.0	134.6	92.5	163.0	0.76	0.42	-2.79
3,000.0	13.28	39.85	2,984.0	141.6	98.4	172.1	0.74	0.38	-2.78
3,040.0	12.54	37.64	3,023.0	148.6	104.0	181.0	2.22	-1.84	-5.52
3,080.0	11.83	35.17	3,062.1	155.4	109.0	189.5	2.22	-1.79	-6.18
3,120.0	11.74	34.86	3,101.2	162.0	113.6	197.6	0.26	-0.21	-0.77
3,160.0	11.96	35.67	3,140.4	168.7	118.4	205.8	0.67	0.53	2.02
3,200.0	12.17	36.56	3,179.5	175.5	123.3	214.1	0.71	0.53	2.22
3,240.0	12.38	37.63	3,218.6	182.3	128.4	222.6	0.78	0.53	2.69
3,280.0	12.59	38.67	3,257.6	189.1	133.8	231.3	0.78	0.54	2.60
3,320.0	12.63	36.37	3,296.7	196.0	139.1	240.0	1.26	0.08	-5.77
3,360.0	12.68	33.99	3,335.7	203.1	144.1	248.7	1.31	0.12	-5.95
3,400.0	12.54	33.23	3,374.7	210.5	148.9	257.5	0.54	-0.34	-1.90
3,440.0	12.29	33.44	3,413.8	217.6	153.7	266.0	0.65	-0.64	0.53
3,480.0	11.97	33.99	3,452.9	224.7	158.3	274.4	0.84	-0.79	1.37
3,520.0	11.50	35.47	3,492.1	231.3	163.0	282.5	1.40	-1.18	3.70
3,560.0	11.03	37.07	3,531.3	237.6	167.6	290.3	1.40	-1.16	4.01
3,600.0	11.31	36.58	3,570.5	243.8	172.2	298.1	0.74	0.70	-1.22
3,640.0	11.65	35.96	3,609.7	250.3	176.9	306.0	0.91	0.85	-1.57
3,680.0	11.85	35.28	3,648.9	256.9	181.7	314.2	0.59	0.48	-1.69
3,720.0	11.93	34.55	3,688.0	263.6	186.4	322.4	0.43	0.21	-1.81
3,760.0	12.04	33.89	3,727.2	270.5	191.1	330.7	0.43	0.26	-1.66
3,800.0	12.21	33.42	3,766.3	277.5	195.7	339.1	0.49	0.42	-1.18
3,840.0	12.38	32.96	3,805.4	284.6	200.4	347.5	0.49	0.43	-1.15
3,880.0	12.25	33.23	3,844.4	291.8	205.1	356.0	0.35	-0.32	0.68
3,920.0	12.08	33.61	3,883.5	298.8	209.7	364.4	0.47	-0.43	0.96
3,960.0	11.86	34.34	3,922.7	305.7	214.3	372.7	0.66	-0.54	1.81
4,000.0	11.61	35.39	3,961.8	312.4	219.0	380.8	0.84	-0.64	2.64
4,040.0	11.50	36.55	4,001.0	318.9	223.7	388.8	0.64	-0.28	2.88
4,080.0	12.05	37.88	4,040.2	325.4	228.6	397.0	1.53	1.38	3.33
4,120.0	12.60	39.10	4,079.3	332.0	233.9	405.5	1.53	1.39	3.04
4,160.0	12.59	38.30	4,118.3	338.9	239.4	414.3	0.44	-0.03	-2.00
4,200.0	12.46	37.06	4,157.3	345.7	244.7	422.9	0.74	-0.32	-3.09
4,240.0	12.44	36.60	4,196.4	352.6	249.8	431.5	0.25	-0.06	-1.14
4,280.0	12.53	37.03	4,235.5	359.5	255.0	440.2	0.31	0.21	1.07
4,320.0	12.59	37.45	4,274.5	366.5	260.3	448.9	0.29	0.17	1.05
4,360.0	12.55	37.88	4,313.5	373.4	265.6	457.6	0.25	-0.11	1.06
4,400.0	12.51	38.30	4,352.6	380.2	271.0	466.3	0.25	-0.11	1.07
4,440.0	12.80	37.78	4,391.6	387.1	276.4	475.0	0.77	0.72	-1.31
4,480.0	13.18	37.02	4,430.6	394.2	281.8	484.0	1.05	0.96	-1.90
4,520.0	13.20	36.58	4,469.5	401.6	287.3	493.2	0.25	0.06	-1.09
4,560.0	12.73	36.54	4,508.5	408.8	292.7	502.2	1.17	-1.17	-0.10
4,600.0	12.32	36.55	4,547.6	415.8	297.8	510.8	1.03	-1.03	0.02
4,640.0	12.62	37.21	4,586.6	422.7	303.0	519.4	0.82	0.74	1.64
4,680.0	12.92	37.83	4,625.6	429.7	308.4	528.3	0.82	0.75	1.57
4,720.0	13.25	38.10	4,664.6	436.8	314.0	537.3	0.84	0.82	0.66
4,760.0	13.59	38.22	4,703.5	444.1	319.7	546.6	0.85	0.85	0.32
4,800.0	13.45	38.04	4,742.4	451.5	325.5	556.1	0.36	-0.35	-0.46

Company:	Mineral Resources Inc	Local Co-ordinate Reference:	Well Vetting #2
Project:	SEC.23-T5N-R65W	TVD Reference:	WELL @ 4643.0ft (Original Well Elev)
Site:	Vetting Pad Sec.23-T5N-R65W	MD Reference:	WELL @ 4643.0ft (Original Well Elev)
Well:	Vetting #2	North Reference:	True
Wellbore:	Vetting #2	Survey Calculation Method:	Minimum Curvature
Design:	Vetting #2	Database:	EDM den0-adp01 Server Data

Survey									
Measured Depth (ft)	Inclination (°)	Azimuth (°)	Vertical Depth (ft)	+N/-S (ft)	+E/-W (ft)	Vertical Section (ft)	Dogleg Rate (°/100ft)	Build Rate (°/100ft)	Turn Rate (°/100ft)
4,840.0	12.51	37.27	4,781.3	458.6	331.0	565.0	2.38	-2.34	-1.92
4,880.0	11.59	36.38	4,820.5	465.3	336.0	573.4	2.35	-2.30	-2.21
4,920.0	11.16	35.70	4,859.7	471.7	340.7	581.3	1.12	-1.07	-1.72
4,960.0	10.74	34.95	4,898.9	477.9	345.1	588.9	1.12	-1.06	-1.85
5,000.0	9.96	34.55	4,938.3	483.8	349.2	596.1	1.95	-1.94	-1.00
5,040.0	9.01	34.30	4,977.7	489.3	352.9	602.7	2.37	-2.37	-0.64
5,080.0	8.00	34.53	5,017.3	494.2	356.3	608.6	2.55	-2.55	0.57
5,120.0	6.84	36.01	5,057.0	498.4	359.2	613.7	2.92	-2.88	3.72
5,160.0	5.70	38.10	5,096.7	501.9	361.9	618.1	2.92	-2.86	5.21
5,200.0	4.93	37.26	5,136.5	504.8	364.1	621.8	1.93	-1.92	-2.10
5,240.0	4.17	36.11	5,176.4	507.4	366.0	625.0	1.93	-1.91	-2.87
5,280.0	3.16	40.14	5,216.3	509.4	367.6	627.6	2.59	-2.51	10.09
5,320.0	2.10	53.21	5,256.3	510.7	368.9	629.4	3.03	-2.65	32.68
5,360.0	1.37	72.44	5,296.3	511.2	369.9	630.4	2.31	-1.82	48.06
5,400.0	0.95	71.04	5,336.3	511.5	370.7	631.1	1.07	-1.07	-3.50
5,440.0	0.52	67.35	5,376.3	511.6	371.2	631.5	1.07	-1.06	-9.22
5,480.0	0.58	72.94	5,416.3	511.8	371.5	631.8	0.19	0.14	13.99
5,520.0	0.66	77.65	5,456.3	511.9	371.9	632.2	0.25	0.22	11.76
5,560.0	0.78	80.81	5,496.3	512.0	372.4	632.6	0.30	0.28	7.90
5,563.6	0.79	81.02	5,499.8	512.0	372.5	632.6	0.33	0.32	5.97
TARGET BHL 646°FNL, 1951°FWL									
5,600.0	0.90	82.89	5,536.3	512.1	373.0	633.0	0.33	0.32	5.12
5,640.0	1.02	83.71	5,576.2	512.1	373.7	633.5	0.30	0.29	2.06
5,680.0	1.11	82.31	5,616.2	512.2	374.4	634.0	0.22	0.21	-3.50
5,720.0	1.19	81.11	5,656.2	512.3	375.2	634.6	0.22	0.21	-3.00
5,760.0	0.98	68.46	5,696.2	512.5	376.0	635.2	0.79	-0.52	-31.64
5,800.0	0.83	47.97	5,736.2	512.8	376.5	635.8	0.89	-0.39	-51.23
5,840.0	0.85	37.10	5,776.2	513.3	376.9	636.3	0.40	0.05	-27.16
5,880.0	0.93	37.58	5,816.2	513.8	377.2	637.0	0.21	0.21	1.19
5,920.0	0.97	40.92	5,856.2	514.3	377.6	637.6	0.17	0.10	8.35
5,960.0	0.89	58.21	5,896.2	514.7	378.1	638.3	0.73	-0.22	43.23
6,000.0	0.89	77.15	5,936.2	515.0	378.7	638.8	0.73	0.01	47.36
6,040.0	1.15	84.12	5,976.2	515.1	379.4	639.3	0.72	0.65	17.41
6,080.0	1.45	87.19	6,016.2	515.1	380.3	639.9	0.77	0.75	7.70
6,120.0	1.66	88.40	6,056.2	515.2	381.4	640.6	0.54	0.54	3.01
6,160.0	1.79	88.57	6,096.1	515.2	382.6	641.4	0.32	0.32	0.43
6,200.0	1.91	88.89	6,136.1	515.2	383.9	642.2	0.29	0.29	0.81
6,240.0	1.95	90.16	6,176.1	515.2	385.2	643.1	0.15	0.11	3.16
6,280.0	1.99	91.36	6,216.1	515.2	386.6	643.9	0.15	0.11	3.02
6,320.0	1.48	93.76	6,256.1	515.2	387.9	644.7	1.29	-1.28	5.98
6,360.0	0.84	100.19	6,296.0	515.1	388.7	645.1	1.63	-1.60	16.08
6,400.0	0.60	109.58	6,336.0	515.0	389.1	645.2	0.67	-0.61	23.47
6,440.0	0.81	108.03	6,376.0	514.8	389.5	645.4	0.53	0.53	-3.87
6,480.0	1.00	107.79	6,416.0	514.6	390.2	645.6	0.48	0.48	-0.61
6,520.0	0.99	113.70	6,456.0	514.4	390.8	645.9	0.26	-0.02	14.79
6,560.0	1.00	119.63	6,496.0	514.1	391.4	646.0	0.26	0.01	14.82
6,600.0	1.06	122.47	6,536.0	513.7	392.0	646.1	0.21	0.17	7.09
6,640.0	1.15	124.06	6,576.0	513.3	392.7	646.1	0.23	0.21	3.97
6,680.0	1.25	125.72	6,616.0	512.8	393.4	646.2	0.27	0.26	4.15
6,720.0	1.38	127.49	6,656.0	512.2	394.1	646.2	0.33	0.32	4.44
6,760.0	1.49	128.75	6,696.0	511.6	394.9	646.2	0.30	0.29	3.14
6,800.0	1.36	125.41	6,736.0	511.0	395.7	646.3	0.39	-0.33	-8.35
6,840.0	1.24	121.37	6,776.0	510.5	396.4	646.3	0.39	-0.31	-10.09
6,880.0	1.20	121.43	6,815.9	510.1	397.2	646.4	0.09	-0.09	0.14

Company:	Mineral Resources Inc	Local Co-ordinate Reference:	Well Vetting #2
Project:	SEC.23-T5N-R65W	TVD Reference:	WELL @ 4643.0ft (Original Well Elev)
Site:	Vetting Pad Sec.23-T5N-R65W	MD Reference:	WELL @ 4643.0ft (Original Well Elev)
Well:	Vetting #2	North Reference:	True
Wellbore:	Vetting #2	Survey Calculation Method:	Minimum Curvature
Design:	Vetting #2	Database:	EDM den0-adp01 Server Data

Survey										
Measured Depth (ft)	Inclination (°)	Azimuth (°)	Vertical Depth (ft)	+N/-S (ft)	+E/-W (ft)	Vertical Section (ft)	Dogleg Rate (°/100ft)	Build Rate (°/100ft)	Turn Rate (°/100ft)	
6,920.0	1.20	123.47	6,855.9	509.6	397.9	646.5	0.11	0.00	5.11	
6,960.0	1.18	125.50	6,895.9	509.2	398.6	646.6	0.11	-0.04	5.08	
7,000.0	1.14	127.62	6,935.9	508.7	399.2	646.6	0.15	-0.11	5.29	
7,040.0	1.10	129.90	6,975.9	508.2	399.8	646.6	0.15	-0.10	5.70	
7,080.0	0.96	123.90	7,015.9	507.8	400.4	646.6	0.44	-0.34	-15.01	
7,120.0	0.84	116.01	7,055.9	507.4	400.9	646.7	0.44	-0.31	-19.71	
7,160.0	0.80	112.70	7,095.9	507.2	401.5	646.9	0.15	-0.10	-8.28	
LEGAL WINDOW 400' X 400' 646'FNL, 1951'FWL - LEGAL WINDOW 400' X 400' 646'FNL, 1951'FWL										

Checked By: _____	Approved By: _____	Date: _____
-------------------	--------------------	-------------