

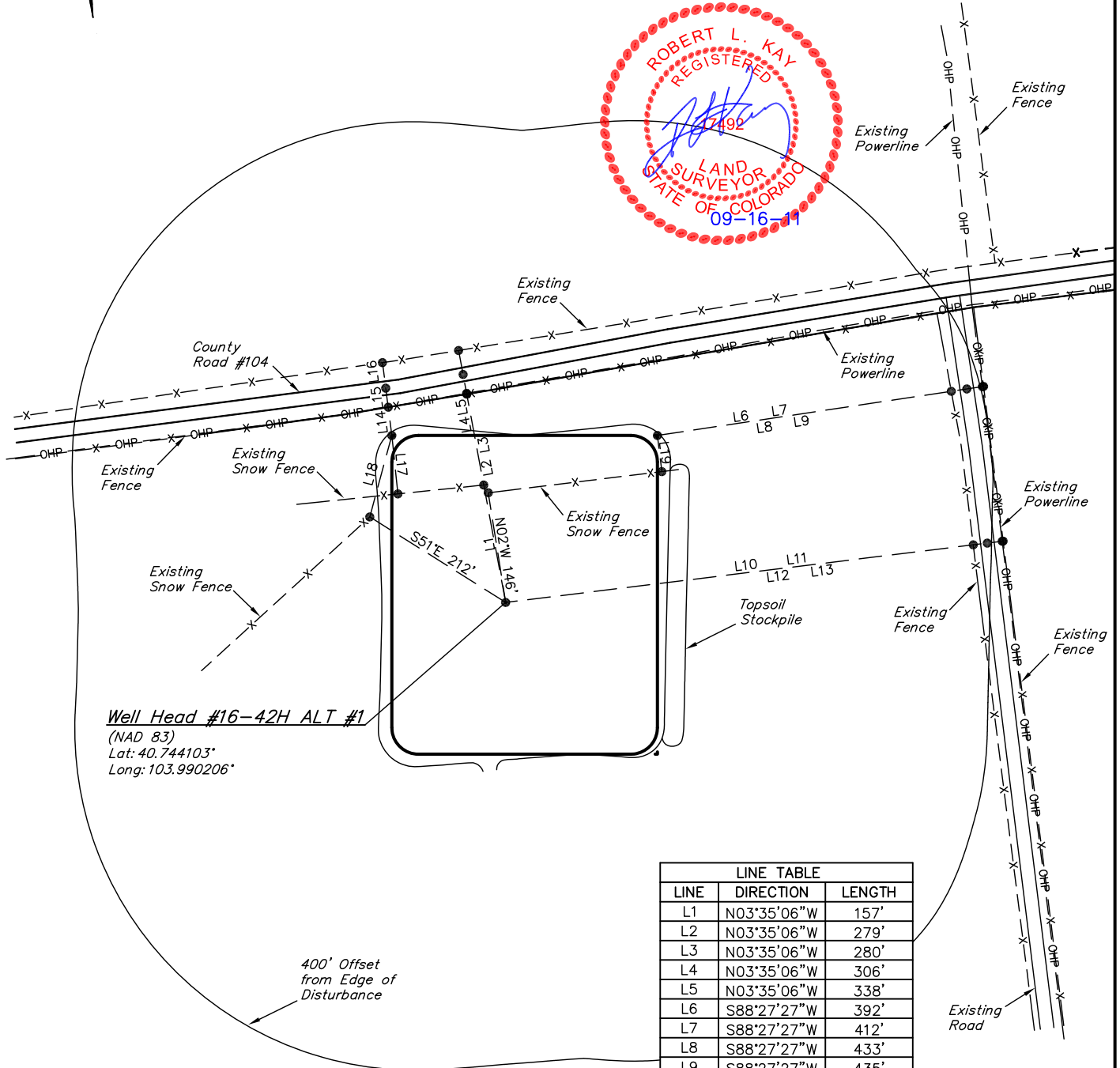
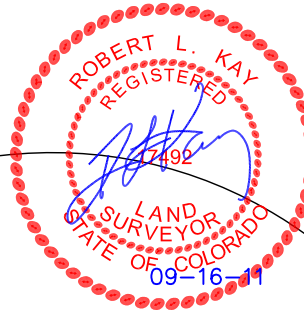


# WHITING OIL & GAS CORP.

## ADDENDUM TO LEGAL PLAT FOR

WILDHORSE #16-42H ALT #1  
SECTION 16, T9N, R59W, 6th P.M.  
330' FSL 660' FWL

SCALE: 1" = 200'  
DATE: 09-09-11  
DRAWN BY: Z.L.



**Well Head #16-42H ALT #1**  
(NAD 83)  
Lat: 40.744103°  
Long: 103.990206°

LINE TABLE		
LINE	DIRECTION	LENGTH
L1	N03°35'06"W	157'
L2	N03°35'06"W	279'
L3	N03°35'06"W	280'
L4	N03°35'06"W	306'
L5	N03°35'06"W	338'
L6	S88°27'27"W	392'
L7	S88°27'27"W	412'
L8	S88°27'27"W	433'
L9	S88°27'27"W	435'
L10	S89°58'52"W	621'
L11	S89°58'52"W	640'
L12	S89°58'52"W	659'
L13	S89°58'52"W	661'
L14	S00°21'08"E	38'
L15	S00°21'08"E	63'
L16	S00°21'08"E	97'
L17	S01°05'32"W	77'
L18	N22°08'29"E	111'
L19	S00°02'19"W	48'