

1625 Broadway  
Suite 2000  
Denver, CO 80202

Tel: 303.228.4000  
Fax: 303.228.4280

www.nobleenergyinc.com



October 10, 2011  
Colorado Oil and Gas Conservation Commission  
The Chancery Building  
1120 Lincoln Street, Suite 801  
Denver, CO 80203  
Attn: Mr. David Neslin, Director

RE: **Hoffman C02-33D**  
Codell/Niobrara New Drill  
Township 4 North, Range 64 West, 6th P.M.  
Section 2: NE/4SW/4: 2391' FSL & 2385' FWL (Surface Location)  
Section 3: NE/4SE/4: 1320' FSL & 75' FEL (Bottom Hole Location)  
Weld County, Colorado

Mr. Neslin:

Noble Energy, Inc. ("NEI") is planning to drill the captioned boundary well in accordance with the provisions of COGCC Rule 318A.e.

NEI's proposed wellbore spacing unit consists of the E/2SE/4, Sec. 3, W/2SW/4, Sec.2, T4N, R64W, creating a 160-acre wellbore spacing unit. NEI is not the only owner within the proposed wellbore spacing unit and as such provided notice to the remaining owner(s) within said proposed spacing unit as required under COGCC Rule 318A(l).e(6). Copies of the required notice letter(s) is/are on file at the NEI offices. The required thirty (30) day notice period has elapsed absent the receipt by NEI of an objection to said proposal by the owner(s) within the proposed spacing unit for this well.

Enclosed are copies of the following documents to assist you in your review and approval of NEI's proposed APD for the captioned well:

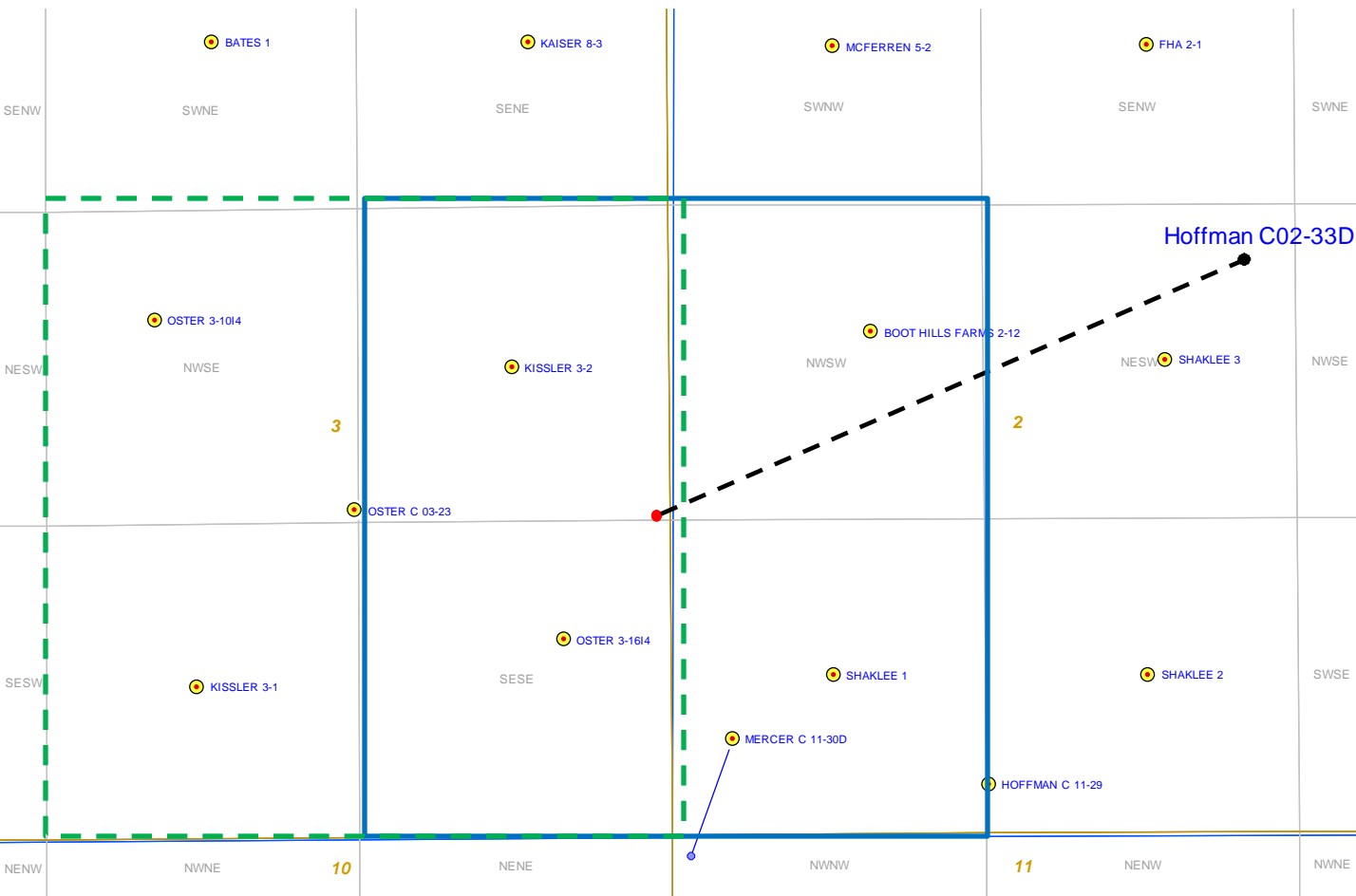
- Map & plat illustrating proposed wellbore spacing unit.

Thank you for your attention to the enclosed. NEI respectfully requests that the COGCC review the enclosed information and approve the Application for Permit to Drill the captioned well.

Sincerely,

Justin Garrett  
Regulatory Specialist  
Noble Energy Inc.

Hoffman C02-33D  
Noble Energy, Inc  
NE/4SE/4 Section 3, Township 4 North, Range 64 West



Legend



Proposed 160 acre spacing unit



Bottom Hole Location

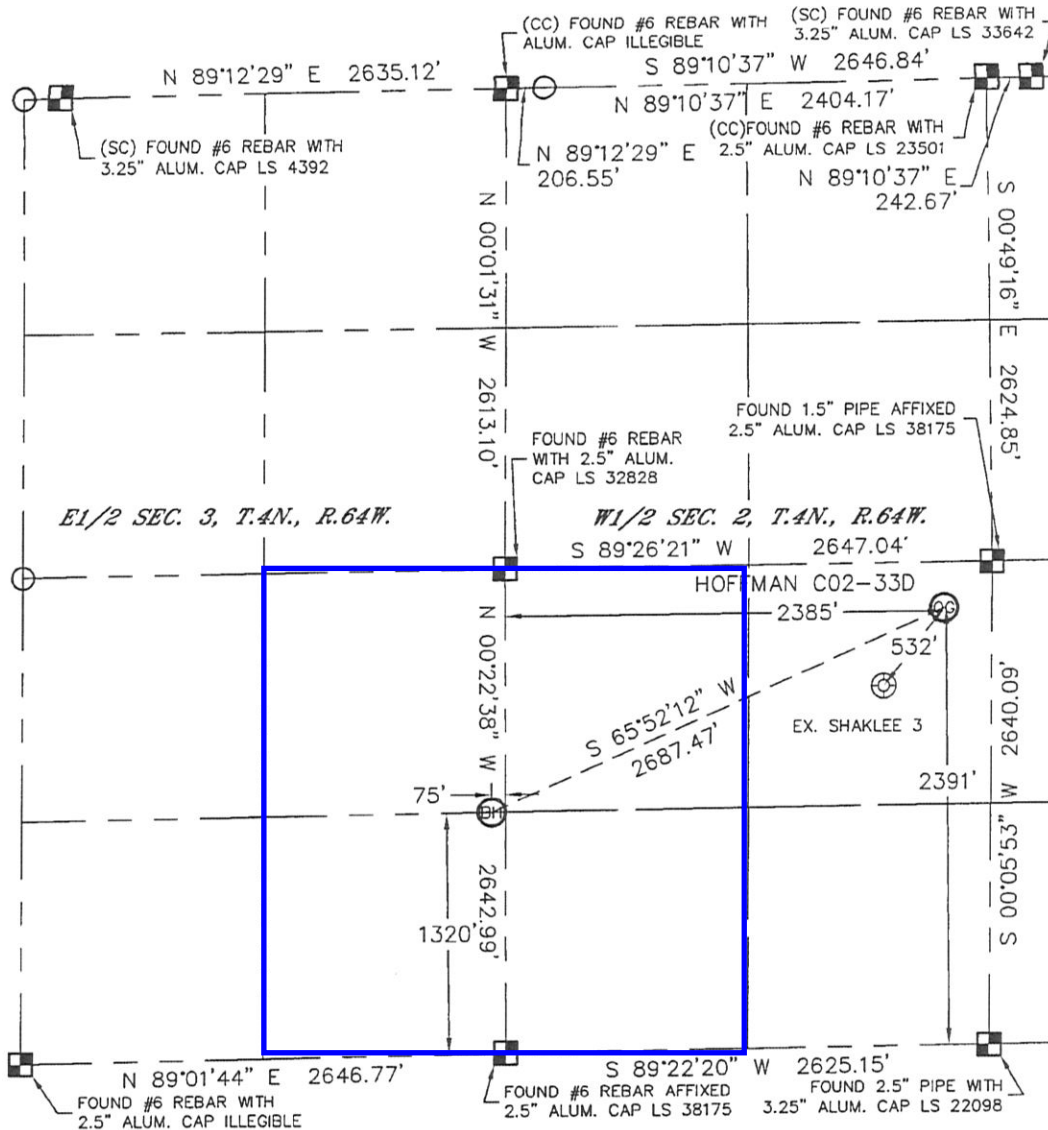


Bottom Hole Located SE/4, Sec. 3, T4N, R64W

# WELL LOCATION CERTIFICATE

THIS MAP DOES NOT REPRESENT A BOUNDARY SURVEY

SECTION: 2  
TOWNSHIP: 4N  
RANGE: 64W



In accordance with a request from Matt Campbell with Noble Energy Inc. Lat40°, LLC has determined the surface location of the HOFFMAN C02-33D to be 2391' from the SOUTH line and 2385' from the WEST line as measured at right angles from the section lines of Section 2, Township 4 North, Range 64 West and the bottom hole to be 1320' from the SOUTH line and 75' from the EAST line as measured at right angles from the section lines of Section 3, Township 4 North, Range 64 West of the Sixth Principal Meridian, County of Weld, State of Colorado.

I hereby state that this Well Location Certificate was prepared by me, or under my direct supervision, that the fieldwork was completed on 12-14-10, for and on behalf of Noble Energy Inc. That this is not a Land Survey Plat or an Improvement Survey Plat, and that it is not to be relied upon for establishment of fence, building, or other future improvement lines.

**NOTE:**

- 1) Bearings shown are Grid Bearings of the Colorado State Plane Coordinate System, North Zone, North American Datum 1983/2007. The lineal dimensions as contained herein are based upon the "U.S. Survey Foot."
- 2) Ground elevations are based on an observed GPS elevation (NAVD 1988 DATUM).
- 3) NEAREST EXISTING WELL: SHAKLEE 3 532'
- 4) IMPROVEMENTS: See LOCATION DRAWING for all visible improvements within 400' of disturbed area.
- 5) SURFACE USE: CROP DRYLAND
- 6) INSTRUMENT OPERATOR: BRIAN BRINKMAN

SURFACE LOCATION  
LATITUDE: 40.34074°N  
LONGITUDE: 104.51849°W  
PDOP: 1.3  
ELEV: 4620  
1/4, 1/4: NE1/4SW1/4  
NEAREST PROPERTY LINE: 249' NORTH

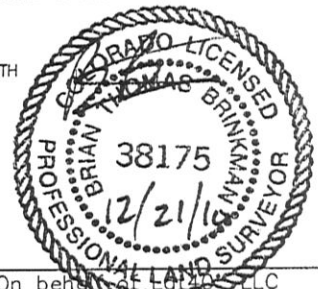
BOTTOM HOLE  
LATITUDE: 40.33780°N  
LONGITUDE: 104.52733°W

**NOTE**

According to Colorado law, you must commence any legal action based upon any defect in this W.L.C. within three years after you discover such defect. In no event, may any action based upon any defect in this survey be commenced more than ten years after the date of the certificate shown hereon. (13-80-105 C.R.S.)

## LEGEND

- = ALIQUOT MONUMENT AS DESCRIBED
- = CALCULATED POSITION



Brian T. Brinkman—On behalf of Lat40°, LLC  
Colorado Licensed Professional  
Land Surveyor No. 38175

PROJECT#: 2010170

Lat40°, LLC

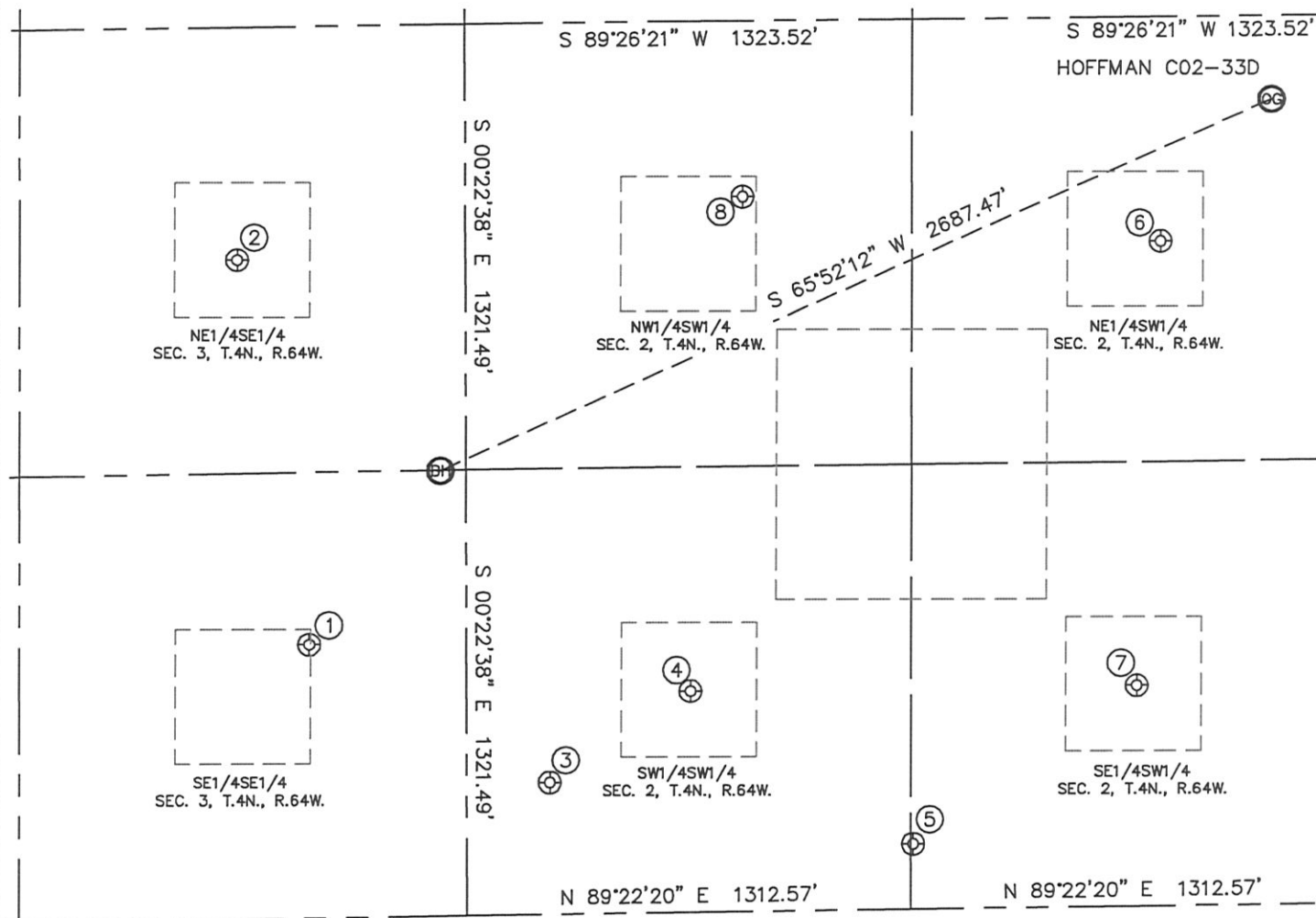
1635 Foxtrail Drive, Suite 325

Loveland, CO 80538

# SITE SKETCH

## HOFFMAN C02-33D

SECTION: 2  
TOWNSHIP: 4N  
RANGE: 64W



③

MERCER C11-30D  
SW1/4SW1/4  
390' FSL  
246' FWL  
LAT-40.33525°N  
LONG-104.52619°W  
PDOP:1.8  
ELEV: 4625

④

SHAKLEE 1  
SW1/4SW1/4  
657' FSL  
663' FWL  
LAT-40.33598°N  
LONG-104.52469°W  
PDOP:1.8  
ELEV: 4624

⑤

HOFFMAN C11-29  
SE1/4SW1/4  
194' FSL  
1320' FWL  
LAT-40.33471°N  
LONG-104.52234°W  
PDOP:1.7  
ELEV: 4625

⑥

SHAKLEE 3  
NE1/4SW1/4  
1974' FSL  
2056' FWL  
LAT-40.33959°N  
LONG-104.51968°W  
PDOP:1.6  
ELEV: 4622

⑦

SHAKLEE 2  
SE1/4SW1/4  
657' FSL  
1982' FWL  
LAT-40.33598°N  
LONG-104.51996°W  
PDOP:1.7  
ELEV: 4622

⑧

BOOT HILLS FARMS 2-12  
NW1/4SW1/4  
2120' FSL  
820' FWL  
LAT-40.33999°N  
LONG-104.52410°W  
PDOP:1.7  
ELEV: 4635

①

OSTER 3-1614  
SE1/4SE1/4  
813' FSL  
464' FEL  
LAT-40.33640°N  
LONG-104.52873°W  
PDOP:1.5  
ELEV: 4632

②

KISSLER 3-2  
NE1/4SE1/4  
1954' FSL  
674' FEL  
LAT-40.33953°N  
LONG-104.52947°W  
PDOP:1.6  
ELEV: 4653

