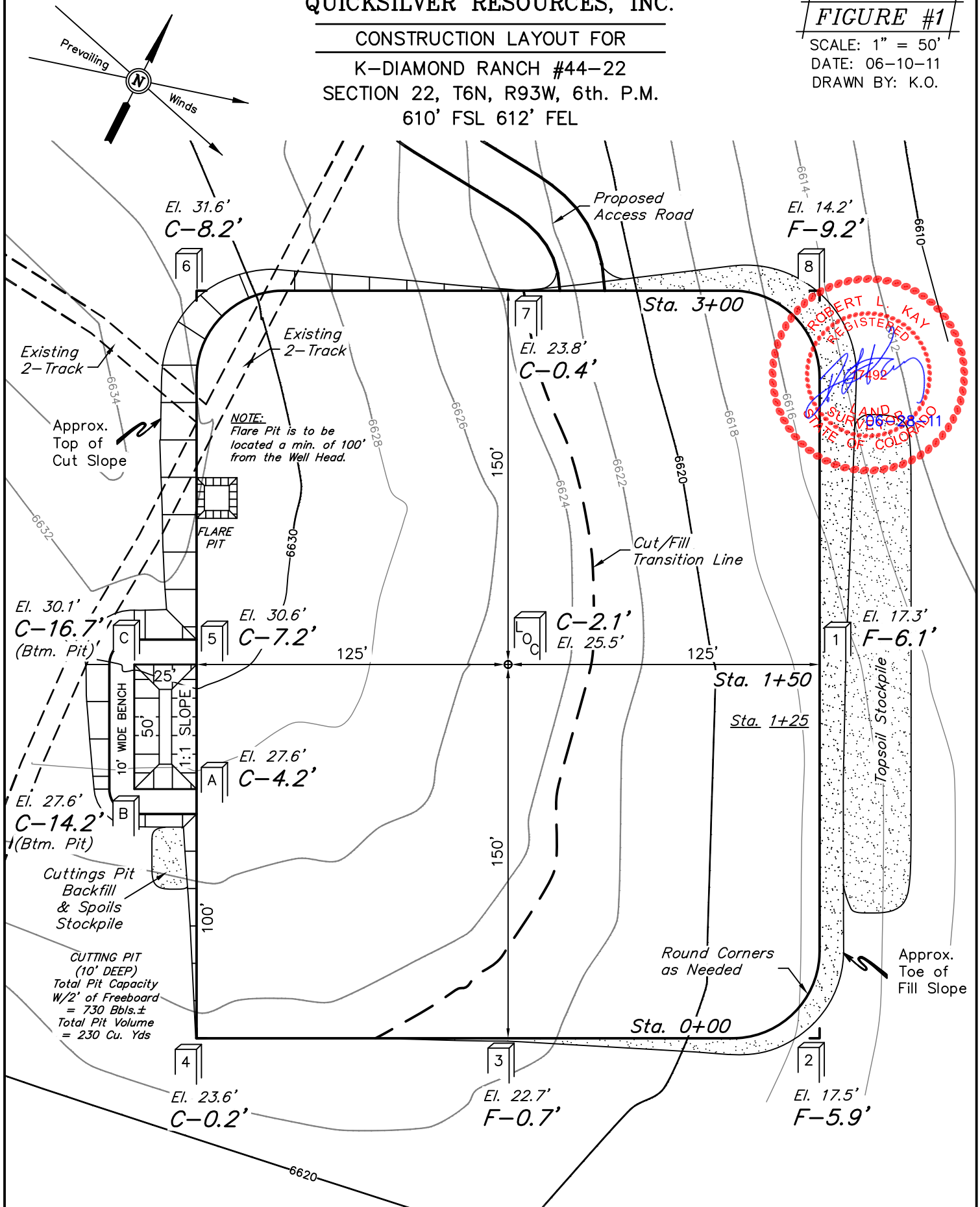


QUICKSILVER RESOURCES, INC.

CONSTRUCTION LAYOUT FOR
K-DIAMOND RANCH #44-22
SECTION 22, T6N, R93W, 6th. P.M.
610' FSL 612' FEL

FIGURE #1

SCALE: 1" = 50'
DATE: 06-10-11
DRAWN BY: K.O.



Elev. Ungraded Ground At Loc. Stake = 6625.5'
FINISHED GRADE ELEV. AT LOC. STAKE = 6623.4'

UINTAH ENGINEERING & LAND SURVEYING
85 So. 200 East * Vernal, Utah 84078 * (435) 789-1017

QUICKSILVER RESOURCES, INC.

FIGURE #2

CONSTRUCTION LAYOUT CROSS SECTIONS FOR

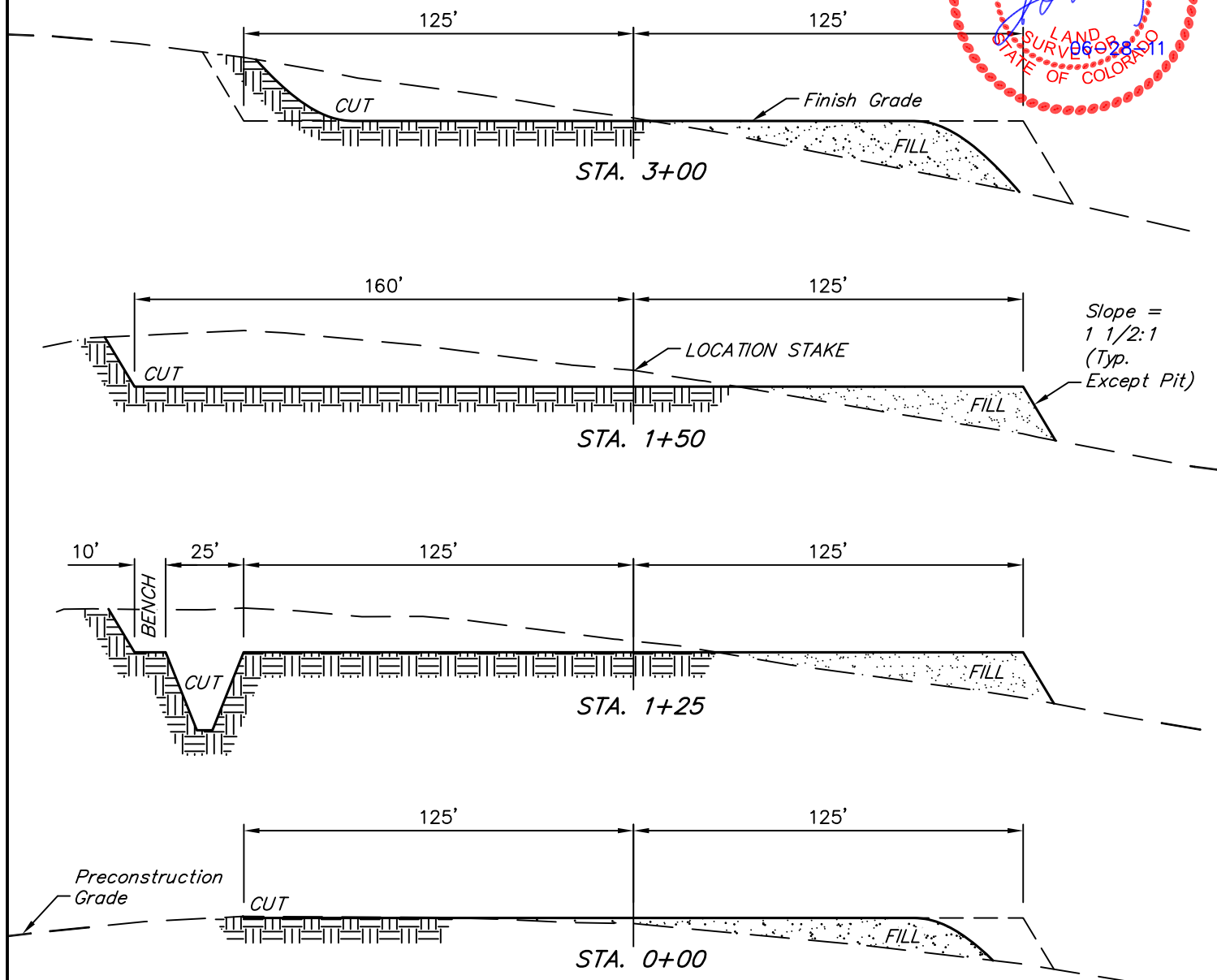
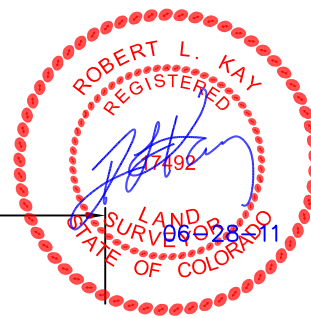
K-DIAMOND RANCH #44-22

SECTION 22, T6N, R93W, 6th. P.M.

610' FSL 612' FEL

1" = 20'
X-Section
Scale
1" = 50'

DATE: 06-13-11
DRAWN BY: K.O.



NOTE:

Topsoil should not be Stripped Below Finished Grade on Substructure Area.

APPROXIMATE ACREAGES

WELL SITE DISTURBANCE = \pm 2.113 ACRES
ACCESS ROAD DISTURBANCE = \pm 10.006 ACRES
TOTAL = \pm 12.119 ACRES

* NOTE:
FILL QUANTITY INCLUDES 5% FOR COMPACTION

APPROXIMATE YARDAGES

(6") Topsoil Stripping = 1,620 Cu. Yds.
Remaining Location = 5,530 Cu. Yds.
TOTAL CUT = 7,150 CU.YDS.
FILL = 5,410 CU.YDS.

EXCESS MATERIAL = 1,740 Cu. Yds.
Topsoil & Pit Backfill = 1,740 Cu. Yds.
(1/2 Pit Vol.)
EXCESS UNBALANCE = 0 Cu. Yds.
(After Interim Rehabilitation)

UINTAH ENGINEERING & LAND SURVEYING
85 So. 200 East * Vernal, Utah 84078 * (435) 789-1017

QUICKSILVER RESOURCES, INC.

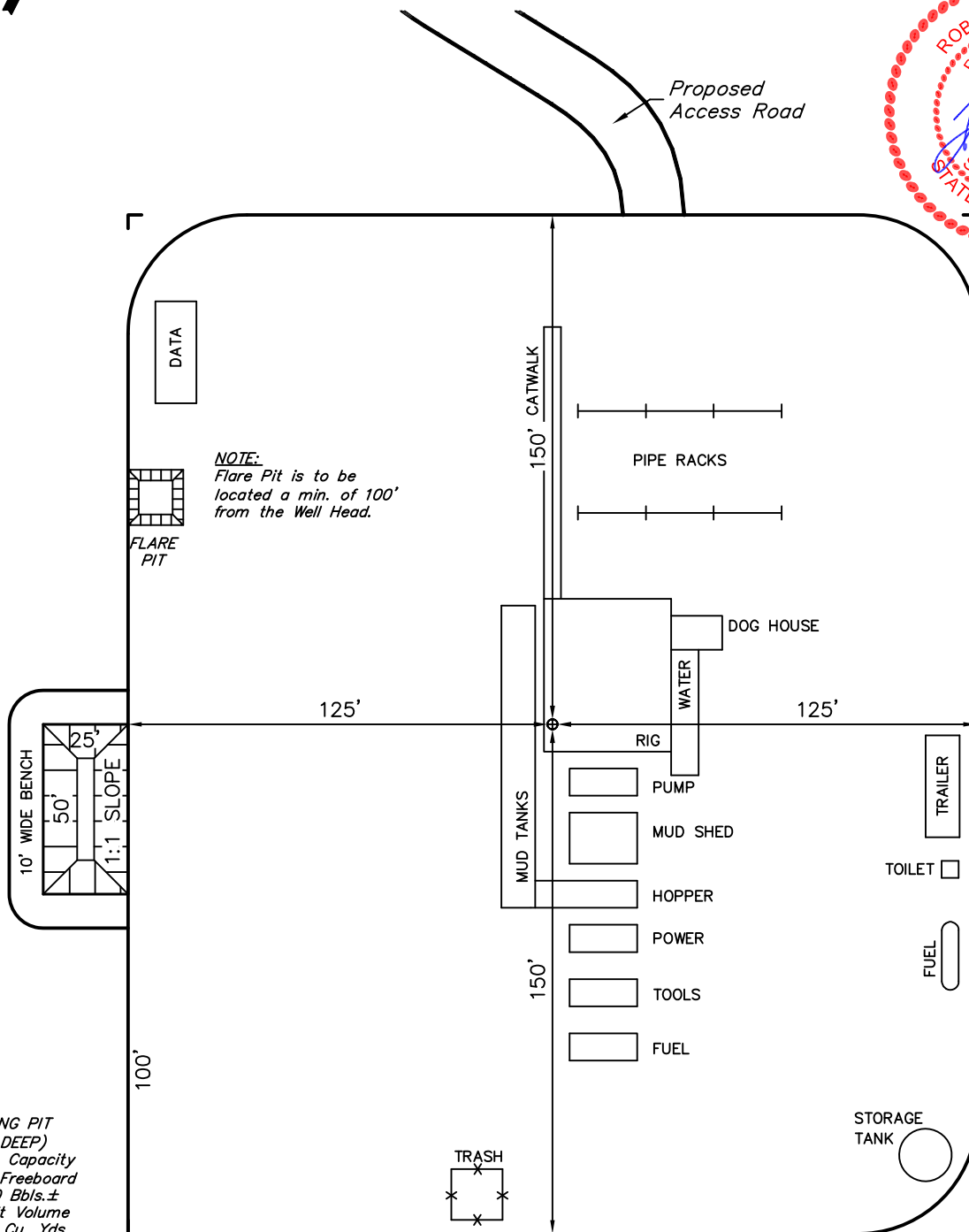
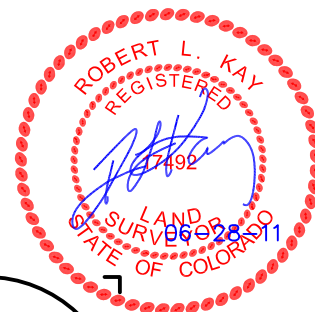
TYPICAL RIG LAYOUT FOR
K-DIAMOND RANCH #44-22
SECTION 22, T6N, R93W, 6th. P.M.
610' FSL 612' FEL

FIGURE #3

SCALE: 1" = 50'

DATE: 06-13-11

DRAWN BY: K.O.



UINTAH ENGINEERING & LAND SURVEYING

85 So. 200 East * Vernal, Utah 84078 * (435) 789-1017

QUICKSILVER RESOURCES, INC.

RECLAMATION DIAGRAM FOR

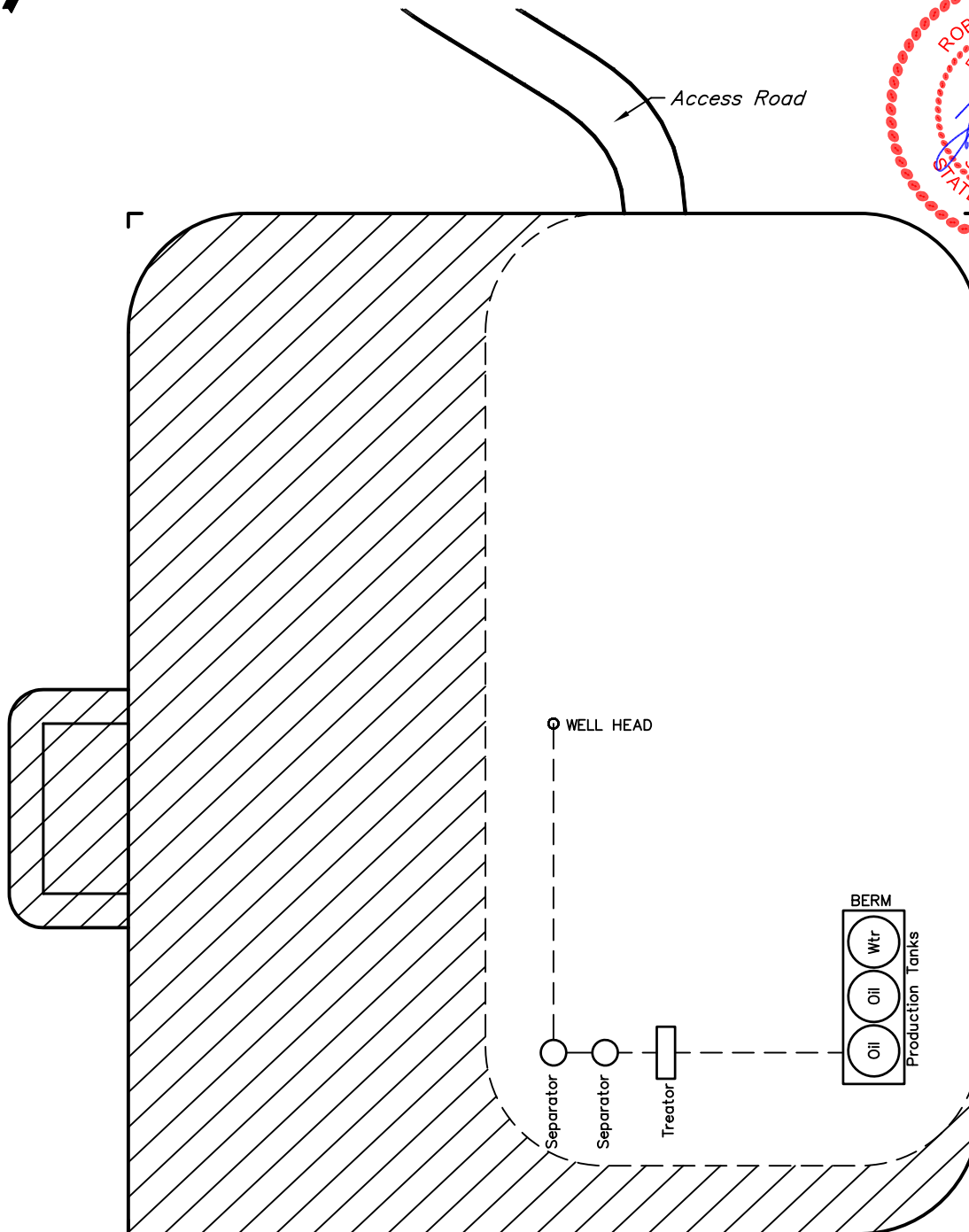
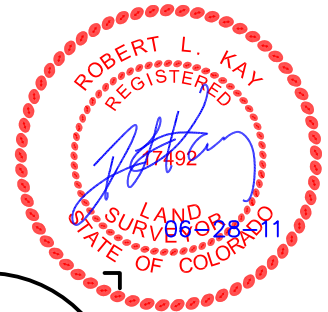
K-DIAMOND RANCH #44-22
SECTION 22, T6N, R93W, 6th. P.M.
610' FSL 612' FEL

FIGURE #4

SCALE: 1" = 50'

DATE: 06-13-11

DRAWN BY: K.O.



APPROXIMATE ACREAGES
UN-RECLAIMED = ± 0.908 ACRES



RECLAIMED AREA

UINTAH ENGINEERING & LAND SURVEYING

85 So. 200 East * Vernal, Utah 84078 * (435) 789-1017