

SYNERGY RESOURCES CORPORATION

RBF 11-22D

Ensign/33

Post Job Summary
Cement Production Casing

Date Prepared: 9/8/11
Version: 1

Service Supervisor: SALINAS, JOSE

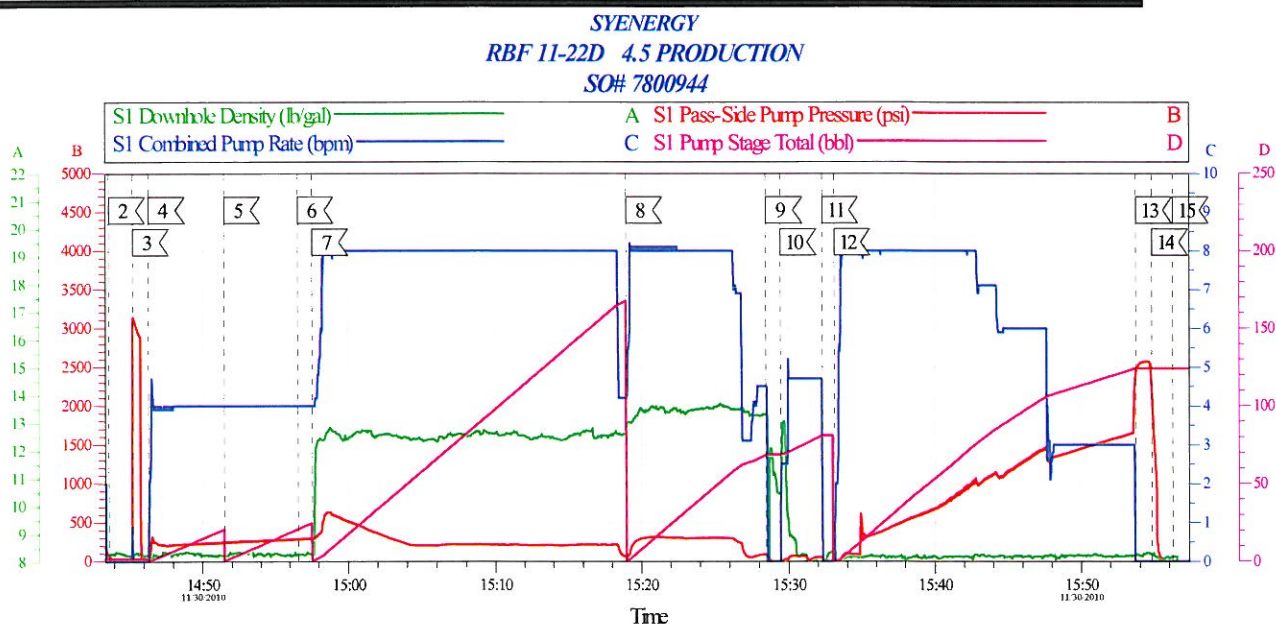
Submitted by: FRY, DOMINIK

HALLIBURTON

Pumping Schedule

| Stage /Plug # | Fluid # | Fluid Type | Fluid Name | Surface Density lbm/gal | Avg Rate bbl/min | Surface Volume | Downhole Volume |
|---------------|---------|---------------|----------------------|-------------------------|------------------|----------------|-----------------|
| 1 | 1 | Spacer | Water Spacer | 8.33 | 4.00 | 20.0 bbl | 20.0 bbl |
| 1 | 2 | Spacer | MUD FLUSH III | 8.40 | 4.00 | 24.0 bbl | 24.0 bbl |
| 1 | 3 | Cement Slurry | Cement 12.5# | 12.50 | 8.00 | 500.0 sacks | 500.0 sacks |
| 1 | 4 | Cement Slurry | Cement 13.5# | 13.50 | 8.00 | 215.0 sacks | 215.0 sacks |
| 1 | 5 | Spacer | Clayfix Displacement | 8.33 | 6.00 | 15.0 Gal | 15.0 Gal |

Data Acquisition



| Global Event Log | | | | | |
|----------------------------|----------------|----------------------|-----------------|--------------------|-----------------|
| Intersection | SPPP | Intersection | SPPP | Intersection | SPPP |
| 2 Start Job | 14:43:40 69.13 | 3 Test Lines | 14:45:17 3063 | 4 Pump Spacer 1 | 14:46:21 -2.696 |
| 5 Pump Spacer 2 | 14:51:32 240.3 | 6 Pump Spacer | 14:56:36 278.4 | 7 Pump Lead Cement | 14:57:35 288.3 |
| 8 Pump Tail Cement | 15:19:01 56.31 | 9 Shutdown | 15:28:31 86.30 | 10 Clean Lines | 15:29:28 -15.70 |
| 11 Drop Top Plug | 15:32:20 37.71 | 12 Pump Displacement | 15:33:09 -14.70 | 13 Bump Plug | 15:53:45 2419 |
| 14 Release Casing Pressure | 15:54:50 2130 | 15 End Job | 15:56:16 -9.696 | | |

| | | |
|-------------------|-----------------------|------------------------|
| Customer: | Job Date: 30-Nov-2010 | Sales Order #: 7800944 |
| Well Description: | Job Type: | ADC User: |
| Company Rep: | Cement Supervisor: | Elite #: |

HALLIBURTON
OptiCemv6.4.9
30-Nov-10 16:01

HALLIBURTON

Service Supervisor Reports

Job Log

| Date/Time | Chart # | Activity Code | Pump Rate | Cum Vol | Pump | Pressure (psig) | Comments |
|------------------|---------|--|-----------|---------|------|-----------------|--|
| 11/30/2010 09:00 | | Call Out | | | | | |
| 11/30/2010 11:35 | | Pre-Convoy Safety Meeting | | | | | |
| 11/30/2010 13:30 | | Arrive at Location from Service Center | | | | | |
| 11/30/2010 13:45 | | Pre-Rig Up Safety Meeting | | | | | |
| 11/30/2010 13:55 | | Rig-Up Equipment | | | | | |
| 11/30/2010 14:30 | | Pre-Job Safety Meeting | | | | | |
| 11/30/2010 14:45 | | Test Lines | 2 | 2 | | 3000.0 | TEST LINES WITH FRESH WATER |
| 11/30/2010 14:46 | | Pump Spacer | 4 | 20 | | 120.0 | PUMP WATER SPACER @ 8.3 PPG |
| 11/30/2010 14:51 | | Pump Spacer 1 | 4 | 24 | | 240.0 | PUMP MUDFLUSH SPACER @ 8.3 PPG |
| 11/30/2010 14:57 | | Pump Spacer | 4 | 10 | | 278.0 | PUMP WATER SPACER 10 BBL |
| 11/30/2010 14:58 | | Pump Lead Cement | 8 | 173.6 | | 288.0 | PUMP 500 SKS OF ECONOCEM @ 12.05PPG (176.6 BBLs) |
| 11/30/2010 15:19 | | Pump Tail Cement | 8 | 65 | | 56.0 | PUMP 150 SKS OF FRACCEM CMT @ 13.5 PPG (65 BBLs) |
| 11/30/2010 15:29 | | Clean Lines | 5 | 10 | | 125.0 | CLEAN LINES WITH FRESH WATER |
| 11/30/2010 15:32 | | Drop Top Plug | 0 | 0 | | .0 | PLUG LEFT CMT HEAD |
| 11/30/2010 15:33 | | Pump Displacement | 8 | | | 377.0 | PUMP 118 BBL OF CLAYFIX WATER FOR DISPLACEMENT |
| 11/30/2010 15:47 | | Other | 3 | 110 | | 1309.0 | SLOW RATE DOWN TO LAND PLUG |
| 11/30/2010 15:53 | | Bump Plug | 3 | 118 | | 2576.0 | LAND PLUG WITH 1000 PSI OVER PUMP PSI |
| 11/30/2010 15:54 | | Release Casing Pressure | 0 | 0 | | .0 | GOT 2 BBL BACK |
| 11/30/2010 15:56 | | Check Floats | 0 | 0 | | .0 | FLOATS HELD GOOD |
| 11/30/2010 15:56 | | End Job | | | | | |
| 11/30/2010 16:00 | | Pre-Rig Down Safety Meeting | | | | | |
| 11/30/2010 16:10 | | Rig-Down Equipment | | | | | |
| 11/30/2010 16:45 | | Depart Location Safety Meeting | | | | | |
| 11/30/2010 17:00 | | Depart Location for Service Center or Other Site | | | | | |

HALLIBURTON

The Road to Excellence Starts with Safety

| | | | | | | | |
|--|--|----------------------------|---|----------------------------|--|-------------------------------|------------------------|
| Sold To #: 359915 | | Ship To #: 2821950 | | Quote #: | | Sales Order #: 7800944 | |
| Customer: SYNERGY RESOURCES CORPORATION | | | | Customer Rep: | | | |
| Well Name: RBF | | | Well #: 11-22D | | | API/UWI #: | |
| Field: | | City (SAP): WINDSOR | | County/Parish: Weld | | | State: Colorado |
| Contractor: Ensign | | | Rig/Platform Name/Num: 33 | | | | |
| Job Purpose: Cement Production Casing | | | | | | | |
| Well Type: Development Well | | | Job Type: Cement Production Casing | | | | |
| Sales Person: FLING, MATTHEW | | | Srvc Supervisor: SALINAS, JOSE | | | MBU ID Emp #: 100319 | |

Job Personnel

| HES Emp Name | Exp Hrs | Emp # | HES Emp Name | Exp Hrs | Emp # | HES Emp Name | Exp Hrs | Emp # |
|------------------|---------|--------|---------------------------|---------|--------|--------------------|---------|--------|
| DIRKS, RICHARD E | | 485940 | MAHONEY, KELLAN Carl | | 476531 | OZBUN, RYAN Jacob | | 475709 |
| SALINAS, JOSE R | | 100319 | SIPNEFSKI, ROBERT Anthony | | 419391 | VIGIL, DANIEL Paul | | 471469 |

Equipment

| HES Unit # | Distance-1 way | HES Unit # | Distance-1 way | HES Unit # | Distance-1 way | HES Unit # | Distance-1 way |
|------------|----------------|------------|----------------|------------|----------------|------------|----------------|
| 10248062C | 50 mile | 10948695 | 50 mile | 10988836C | 50 mile | 11106651 | 50 mile |
| 11362287C | 50 mile | 11527037 | 50 mile | | | | |

Job Hours

| Date | On Location Hours | Operating Hours | Date | On Location Hours | Operating Hours | Date | On Location Hours | Operating Hours |
|-------|-------------------|-----------------|--|-------------------|-----------------|------|-------------------|-----------------|
| | | | | | | | | |
| TOTAL | | | Total is the sum of each column separately | | | | | |

Job

| Formation Name | Formation Depth (MD) | Top | Bottom | Form Type | Job depth MD | Job Depth TVD | Water Depth | Wk Ht Above Floor | Perforation Depth (MD) | From | To |
|----------------|----------------------|-----|--------|-----------|--------------|---------------|-------------|-------------------|------------------------|------|----|
| | | | | BHST | 7675. ft | 7675. ft | | 4. ft | | | |
| | | | | | | | | | | | |
| | | | | | | | | | | | |
| | | | | | | | | | | | |
| | | | | | | | | | | | |

Job Times

| Called Out | Date | Time | Time Zone |
|---------------|-----------------|-------|-----------|
| On Location | 30 - Nov - 2010 | 07:00 | MST |
| Job Started | 30 - Nov - 2010 | 12:30 | MST |
| Job Completed | 30 - Nov - 2010 | 14:00 | MST |
| Job Completed | 30 - Nov - 2010 | 16:00 | MST |
| Departed Loc | 30 - Nov - 2010 | 17:00 | MST |

Well Data

| Description | New / Used | Max pressure psig | Size in | ID in | Weight lbm/ft | Thread | Grade | Top MD ft | Bottom MD ft | Top TVD ft | Bottom TVD ft |
|-------------------|------------|-------------------|---------|-------|---------------|--------|-------|-----------|--------------|------------|---------------|
| Open Hole | | | | 7.875 | | | | 461. | 7675. | . | . |
| Production Casing | New | | 4.5 | 4. | 11.6 | | | . | 7675. | | |
| Surface Casing | New | | 8.625 | 8.097 | 24. | | J-55 | . | 461. | . | . |

Sales/Rental/3rd Party (HES)

| Description | Qty | Qty uom | Depth | Supplier |
|--|-----|---------|-------|----------|
| SHOE,FLT,4-1/2 8RD,2-3/4 SSII | 1 | EA | | |
| CLR,FLT,4-1/2 8RD,9.5-13.5PPF,2-3/4 | 1 | EA | | |
| CENTRALIZER ASSY - API - 4-1/2 CSG X | 30 | EA | | |
| CLAMP - LIMIT - 4-1/2 - HINGED - | 1 | EA | | |
| KIT,HALL WELD-A | 1 | EA | | |
| Description | Qty | Qty uom | Depth | Supplier |
| PLUG ASSY - 3W LATCHDOWN - 4-1/2 IN | 1 | EA | | |
| BAFFLE ASSY - 4-1/2 8RD LATCHDOWN PLUG | 1 | EA | | |

HALLIBURTON

| Tools and Accessories | | | | | | | | | | | | | |
|--|----------------------|---------------------------------|-------|-----------------|-----------------------------------|---------|------------------------|---------------------|------------------|----------------|------------------------|-----------------|--------|
| Type | Size | Qty | Make | Depth | Type | Size | Qty | Make | Depth | Type | Size | Qty | Make |
| Guide Shoe | | | | | Packer | | | | | Top Plug | | | |
| Float Shoe | | | | | Bridge Plug | | | | | Bottom Plug | | | |
| Float Collar | | | | | Retainer | | | | | SSR plug set | | | |
| Insert Float | | | | | | | | | | Plug Container | | | |
| Stage Tool | | | | | | | | | | Centralizers | | | |
| Miscellaneous Materials | | | | | | | | | | | | | |
| Gelling Agt | | | Conc | | Surfactant | | | Conc | | Acid Type | | Qty | Conc % |
| Treatment Fld | | | Conc | | Inhibitor | | | Conc | | Sand Type | | Size | Qty |
| Fluid Data | | | | | | | | | | | | | |
| Stage/Plug #: 1 | | | | | | | | | | | | | |
| Fluid # | Stage Type | Fluid Name | | | Qty | Qty uom | Mixing Density lbm/gal | Yield ft3/sk | Mix Fluid Gal/sk | Rate bbl/min | Total Mix Fluid Gal/sk | | |
| 1 | Water Spacer | | | | 20.00 | bbl | 8.33 | .0 | .0 | 5.0 | | | |
| 2 | MUD FLUSH III | MUD FLUSH III - SBM (528788) | | | 24.00 | bbl | 8.4 | .0 | .0 | 5.0 | | | |
| 3 | Cement 12.5# | ECONOCEM (TM) SYSTEM (452992) | | | 500.0 | sacks | 12.5 | 1.95 | 10.62 | 5.0 | 10.62 | | |
| | 10.62 Gal | FRESH WATER | | | | | | | | | | | |
| 4 | Cement 13.5# | FRACCEM (TM) SYSTEM (452963) | | | 215.0 | sacks | 13.5 | 1.7 | 8.16 | 5.0 | 8.16 | | |
| | 8.16 Gal | FRESH WATER | | | | | | | | | | | |
| 5 | Clayfix Displacement | | | | 15.00 | Gal | . | .0 | .0 | .0 | | | |
| | 0 gal/Mgal | CLAYFIX 3, TOTETANK (101583425) | | | | | | | | | | | |
| Calculated Values | | Pressures | | Volumes | | | | | | | | | |
| Displacement | | Shut In: Instant | | | Lost Returns | | | Cement Slurry | | | Pad | | |
| Top Of Cement | | 5 Min | | | Cement Returns | | | Actual Displacement | | | Treatment | | |
| Frac Gradient | | 15 Min | | | Spacers | | | Load and Breakdown | | | Total Job | | |
| Rates | | | | | | | | | | | | | |
| Circulating | | Mixing | | | Displacement | | | Avg. Job | | | | | |
| Cement Left In Pipe | | Amount | 17 ft | Reason | Shoe Joint | | | | | | | | |
| Frac Ring # 1 @ | | ID | | Frac ring # 2 @ | | ID | | Frac Ring # 3 @ | | ID | | Frac Ring # 4 @ | |
| The Information Stated Herein Is Correct | | | | | Customer Representative Signature | | | | | | | | |