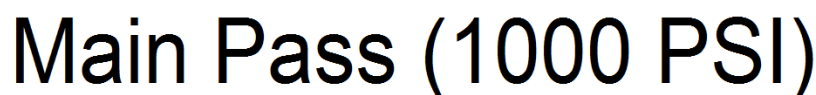




<<< Fold Here >>>
All interpretations are opinions based on inferences from electrical or other measurements and we cannot and do not guarantee the accuracy or correctness of any interpretation, and we shall not, except in the case of gross or willful negligence on our part, be liable or responsible for any loss, costs, damages, or expenses incurred or sustained by anyone resulting from any interpretation made by any of our officers, agents or employees. These interpretations are also subject to our general terms and conditions set out in our current Price Schedule.
Comments
Logged under 1000 PSI.
Directions: Gulnare to Gravel Pit, at Y go left, drive thru Rampart location, follow main rd, drive thru Lifeboat location, dead end on location.

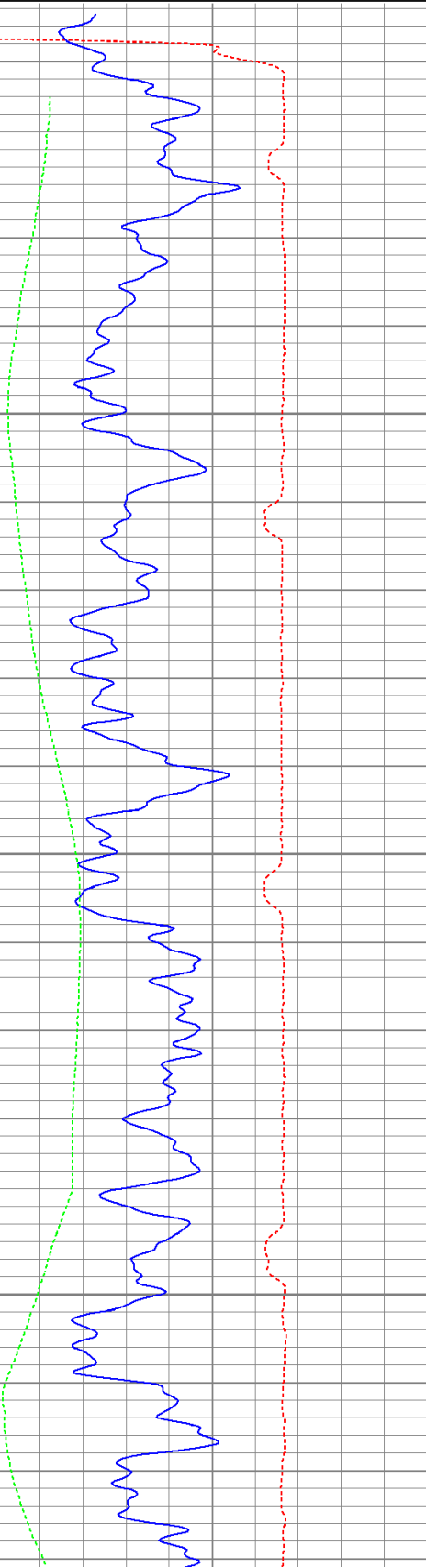


Database File: icehouse72211b.db
Dataset Pathname: pass2.1
Presentation Format: cbldig
Dataset Creation: Fri Jul 22 11:52:37 2011 by Calc Open-Cased 110302
Charted by: Depth in Feet scaled 1:240

400	Travel Time (usec)	200
0	GR (GAPI)	200
0	DEVI (°)	10

0	Amplitude (mV)	100
9	Collar Locator	-1

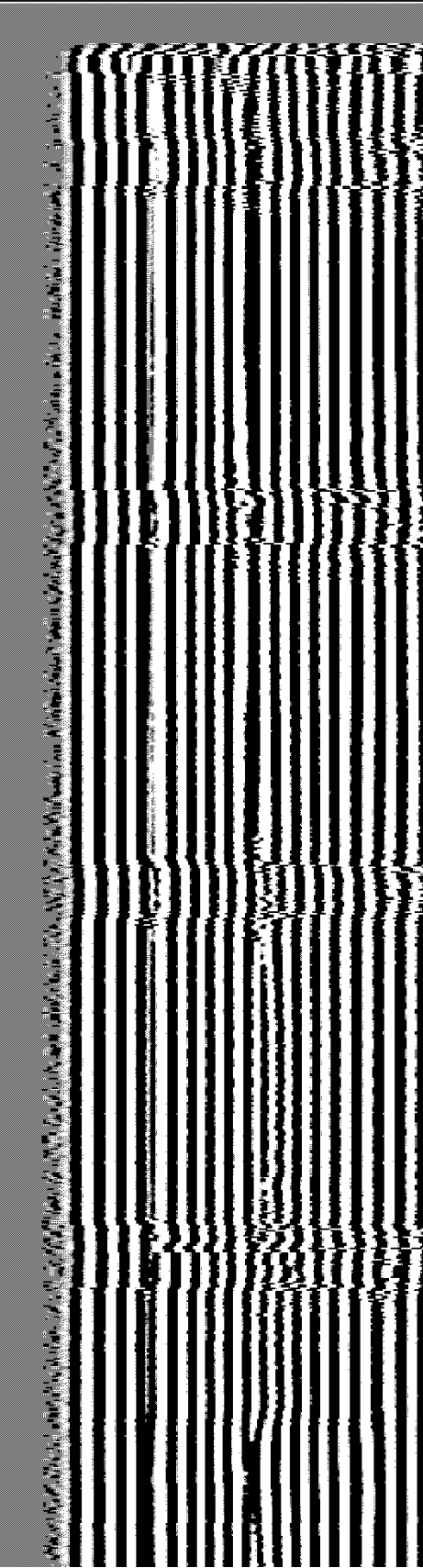
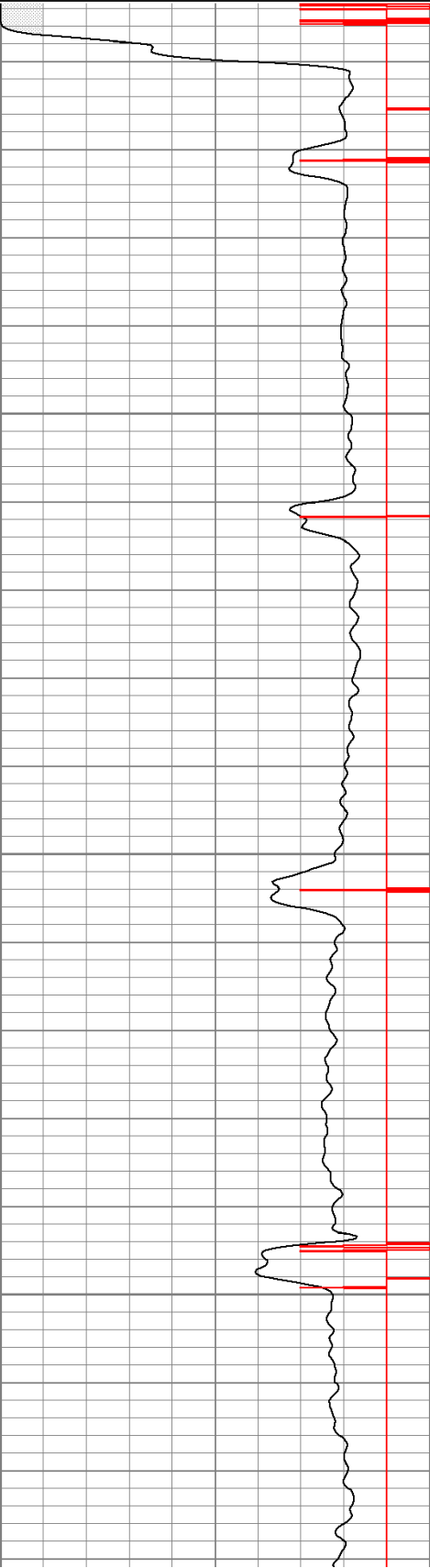
200 Variable Density 1200

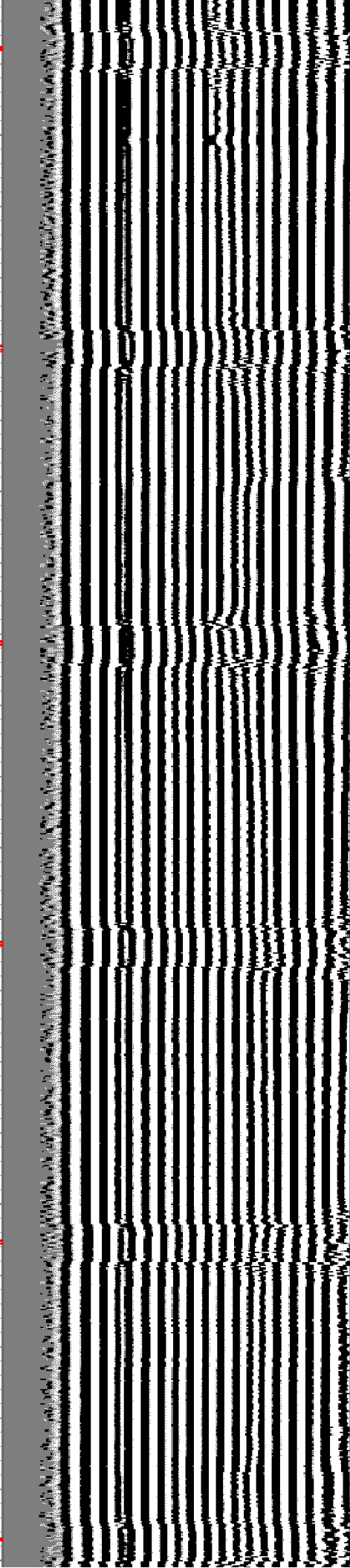
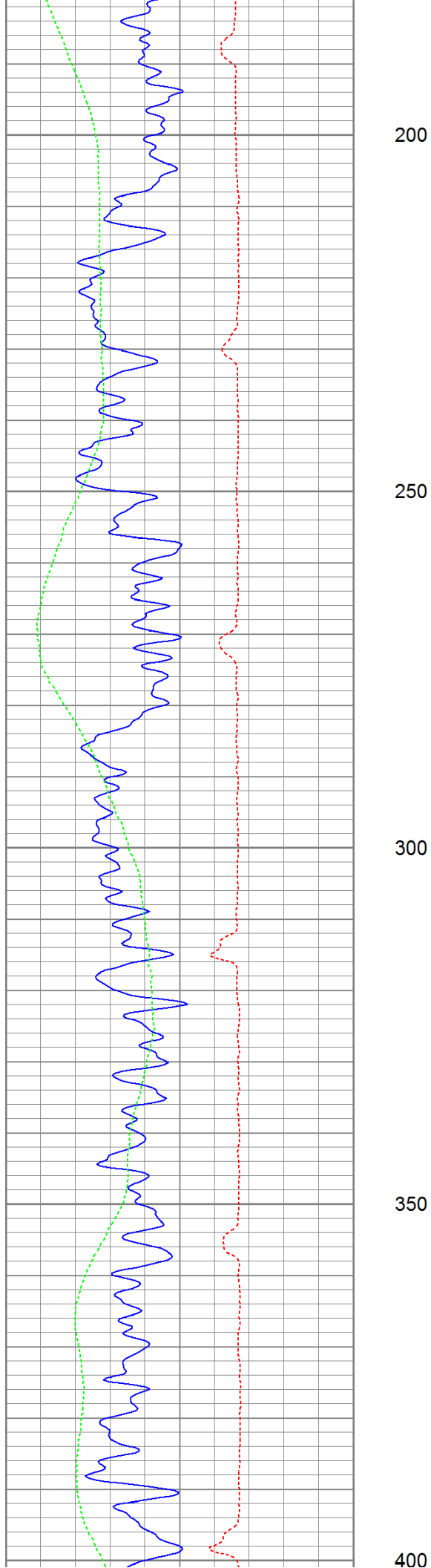


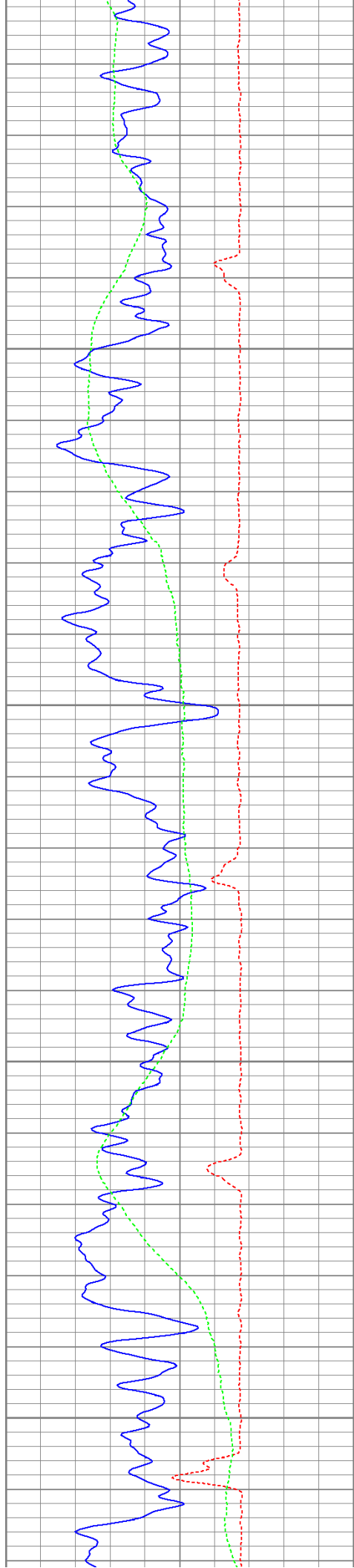
50

100

150





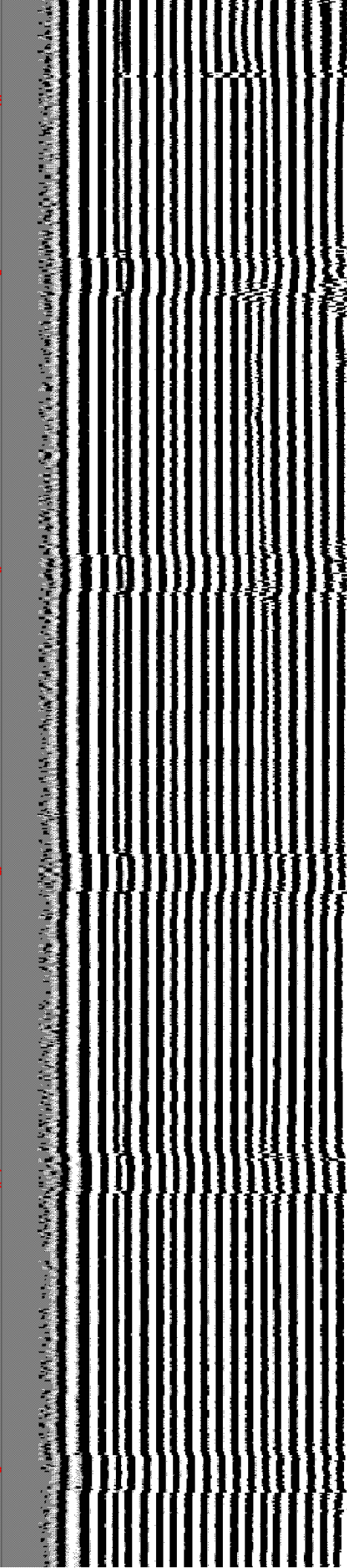
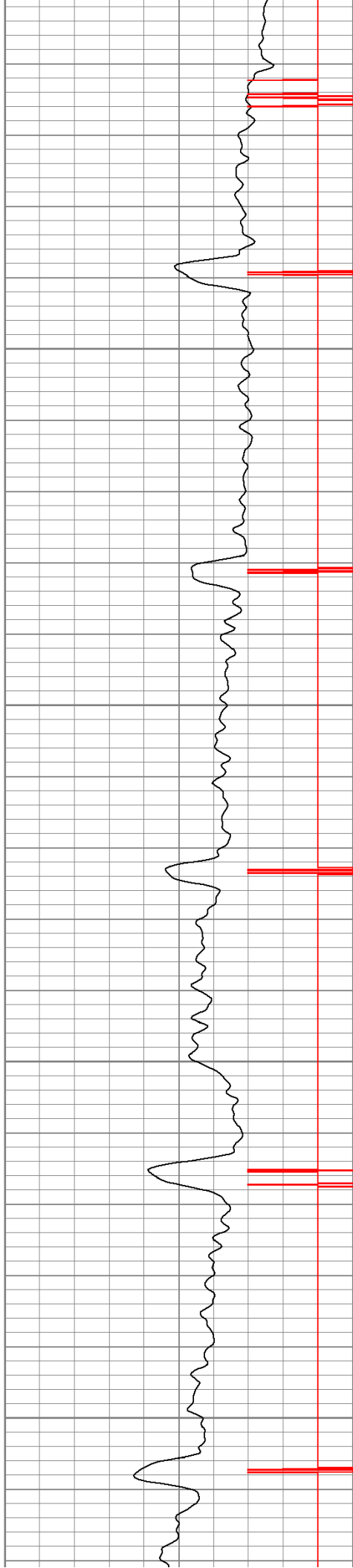


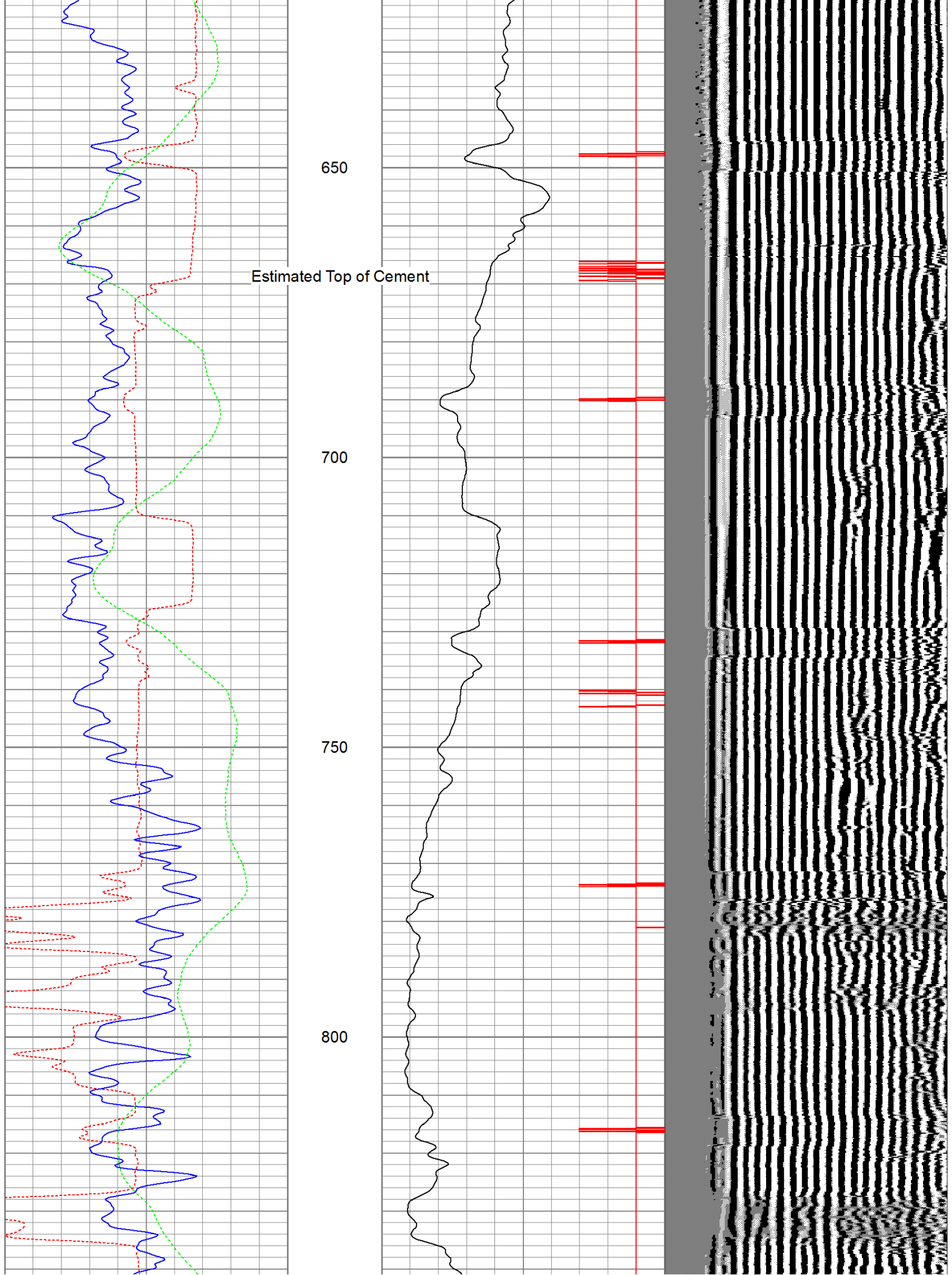
450

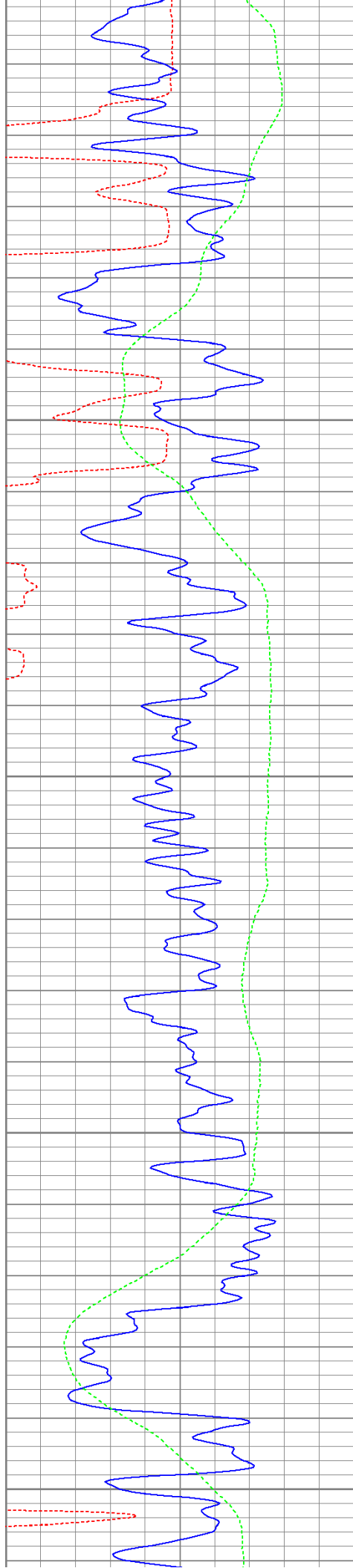
500

550

600







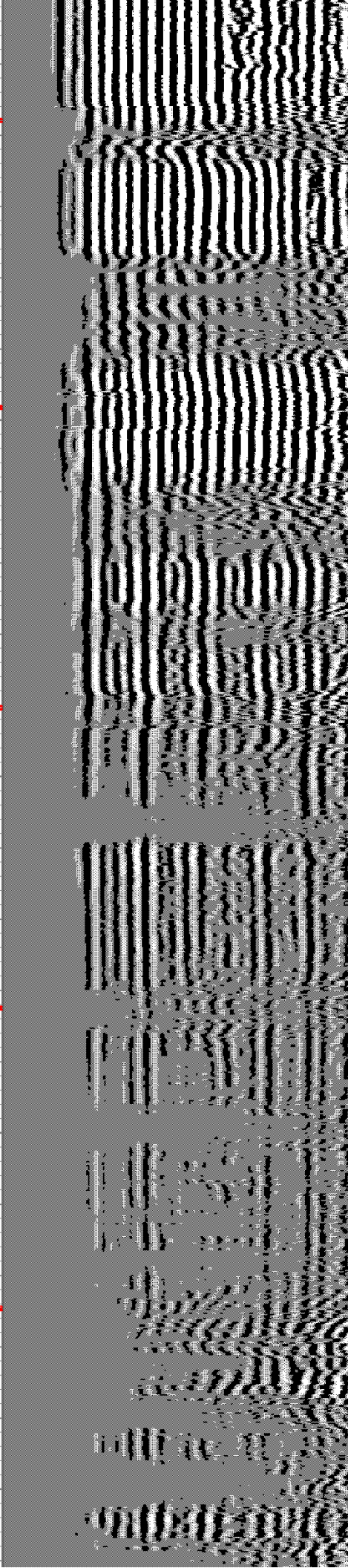
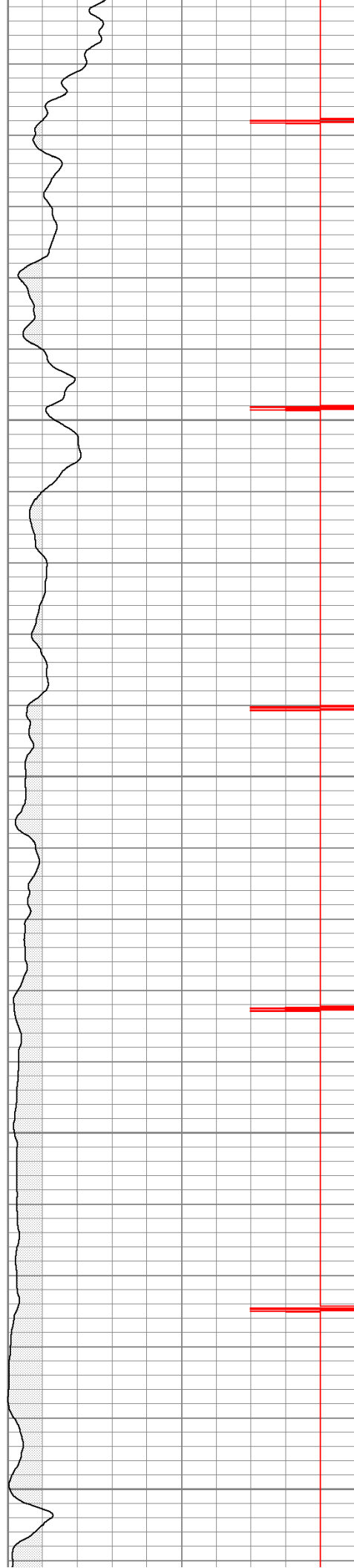
850

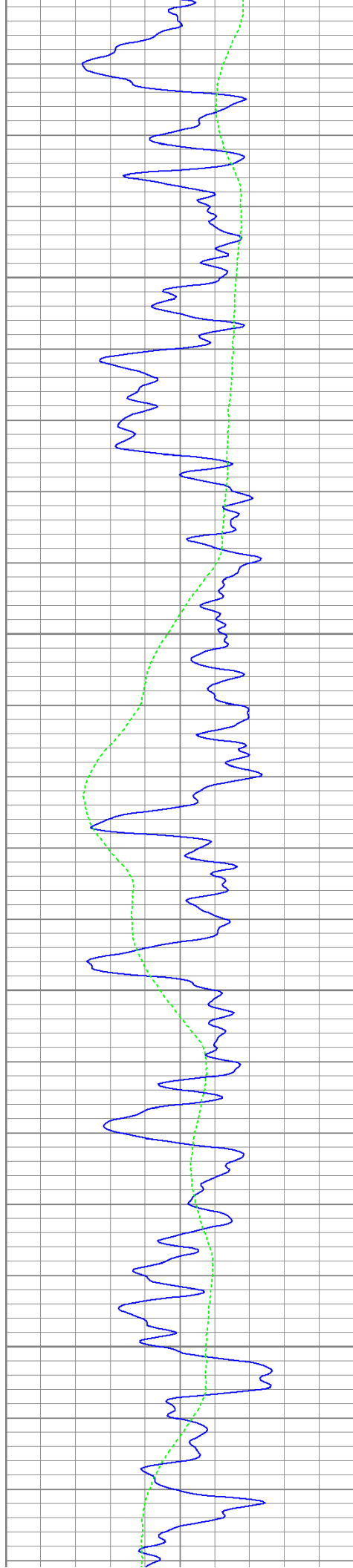
900

950

1000

1050



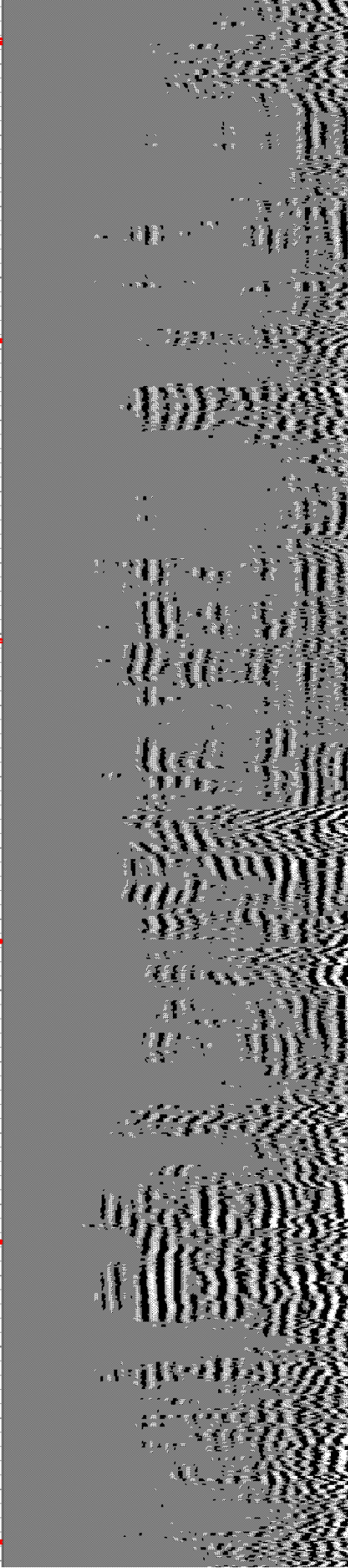


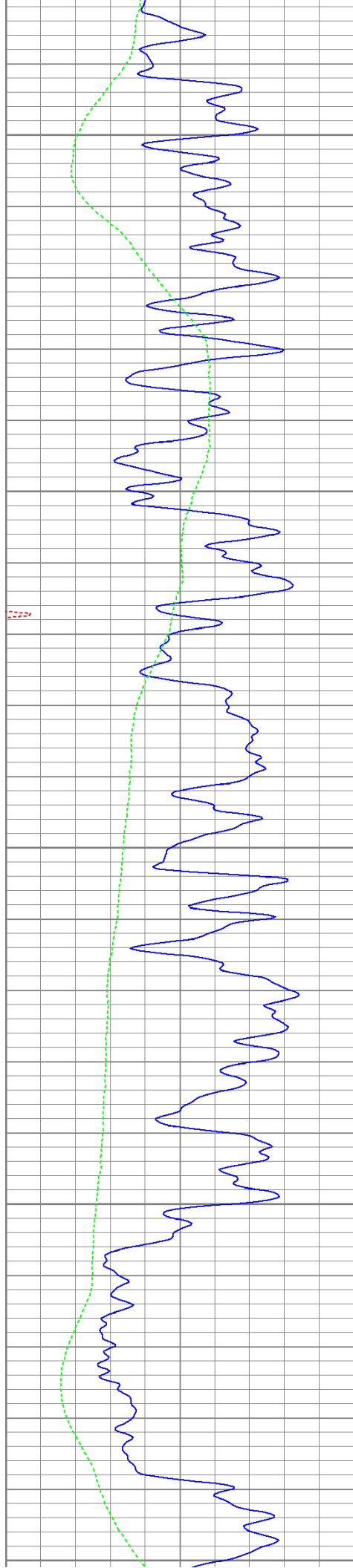
1100

1150

1200

1250





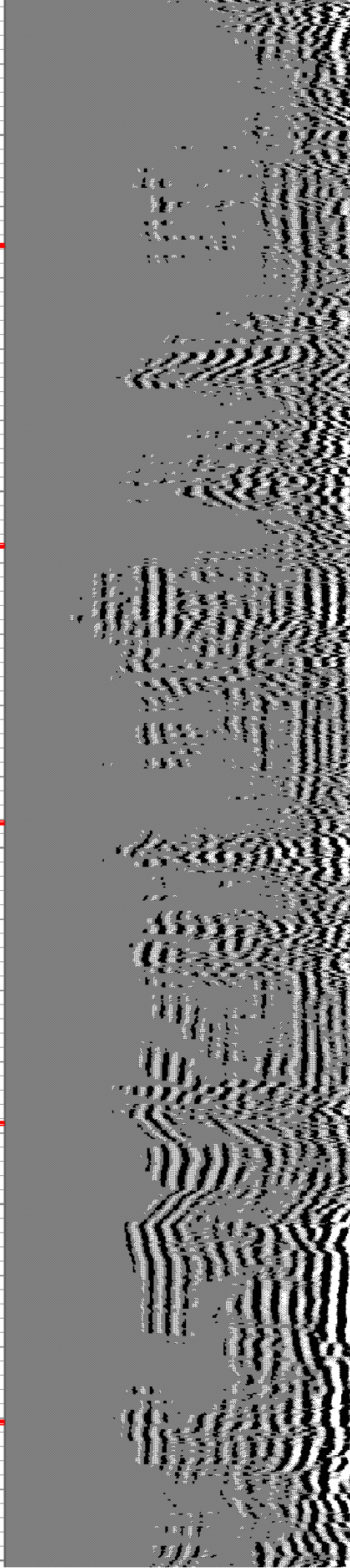
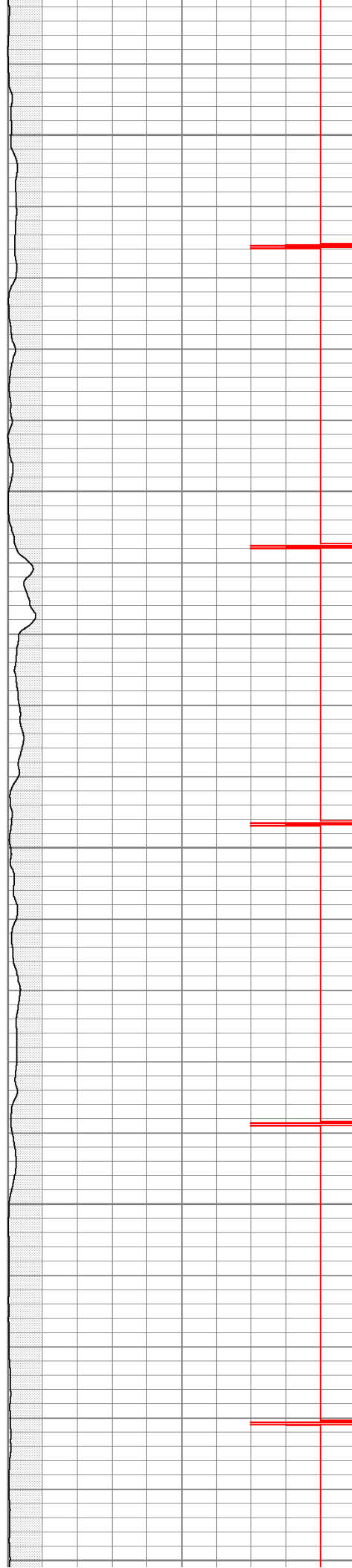
1300

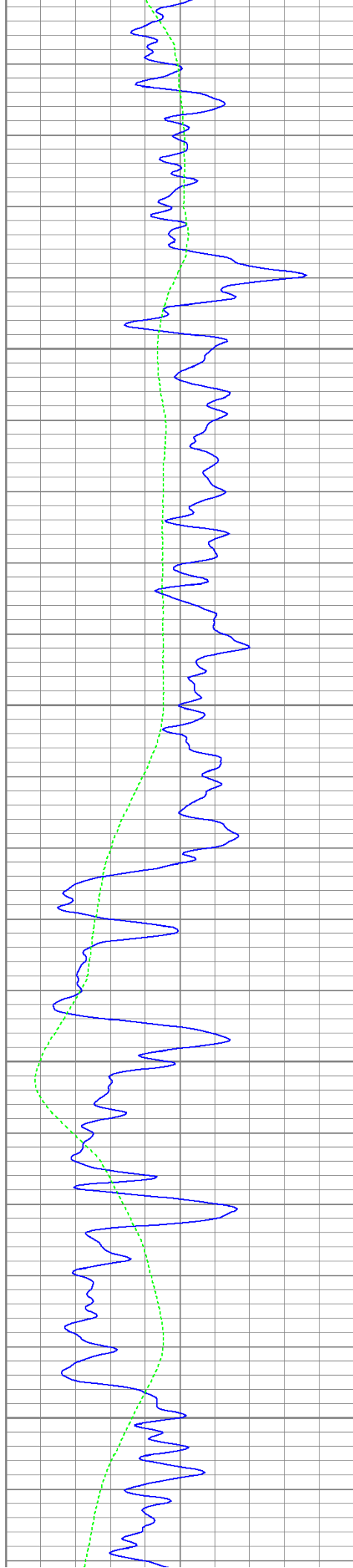
1350

1400

1450

1500





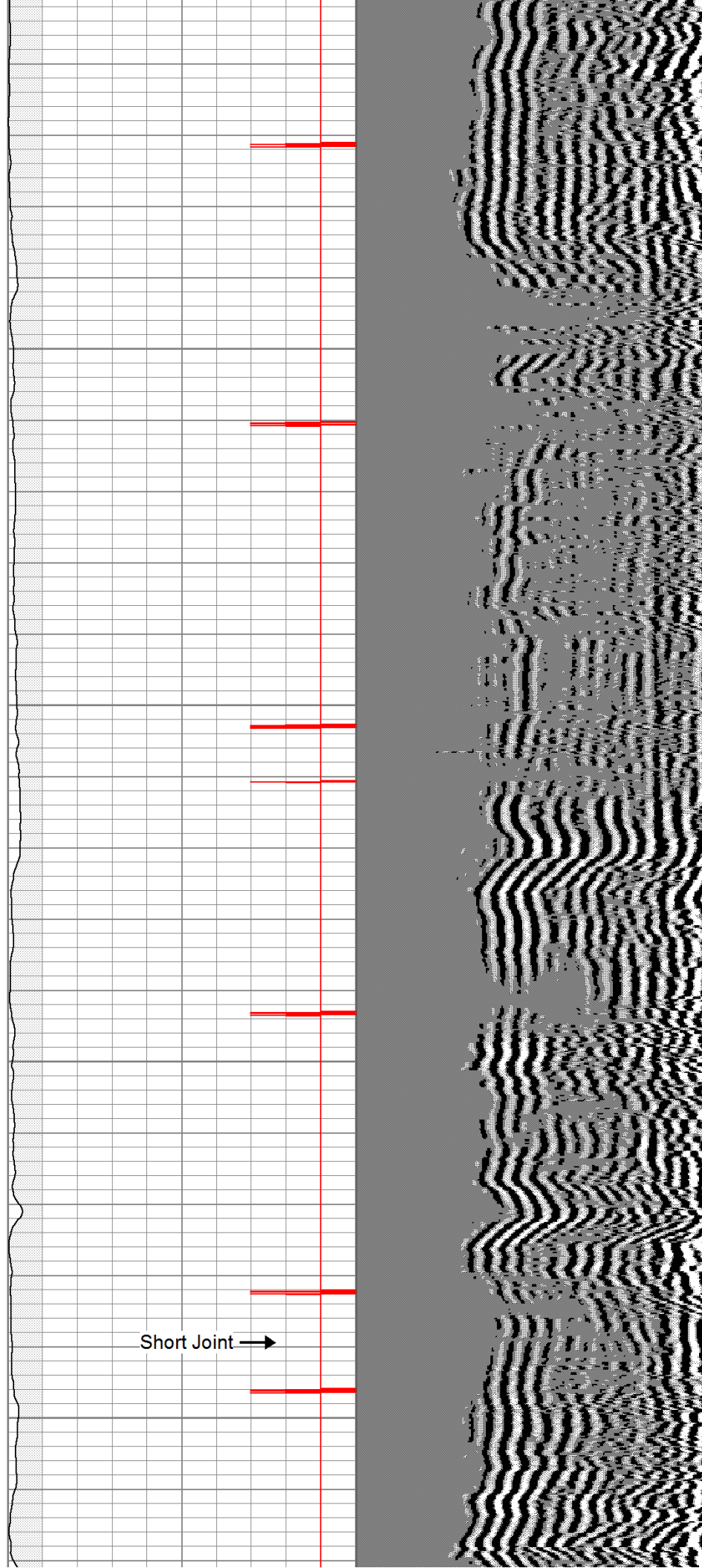
1550

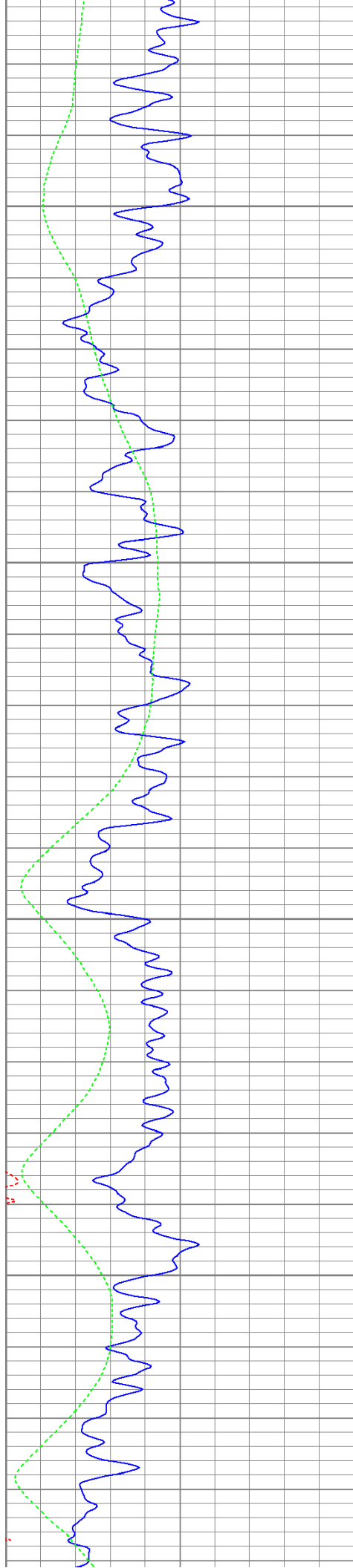
1600

1650

1700

Short Joint →



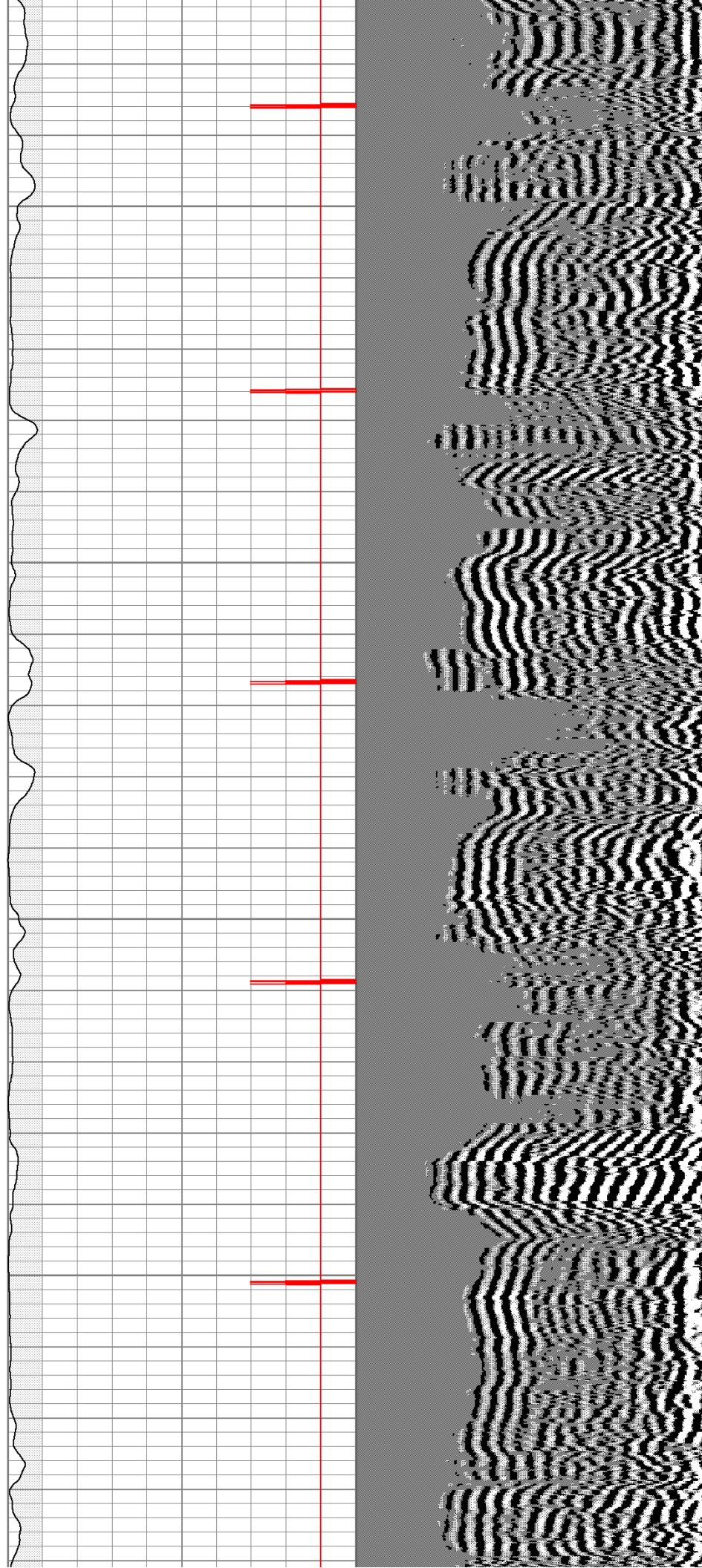


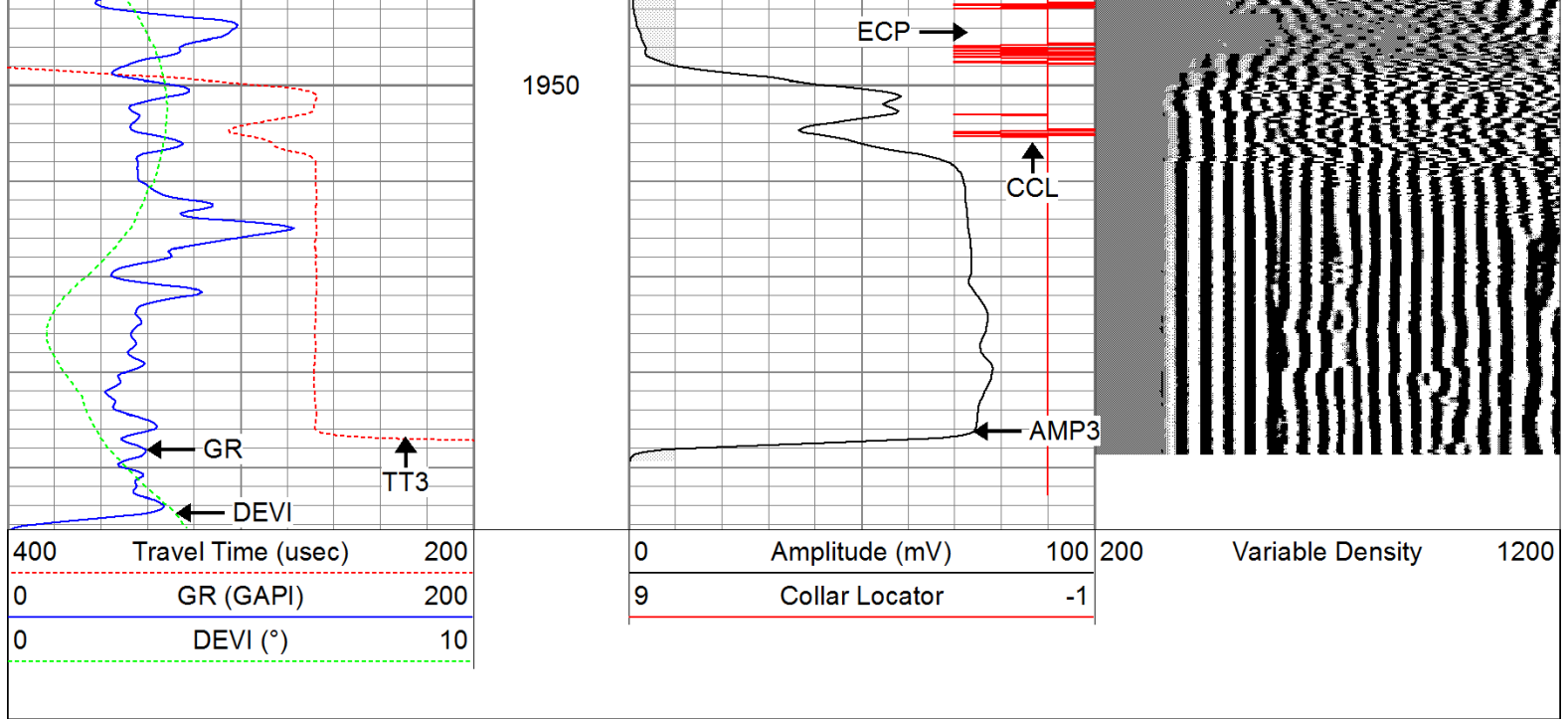
1750

1800

1850

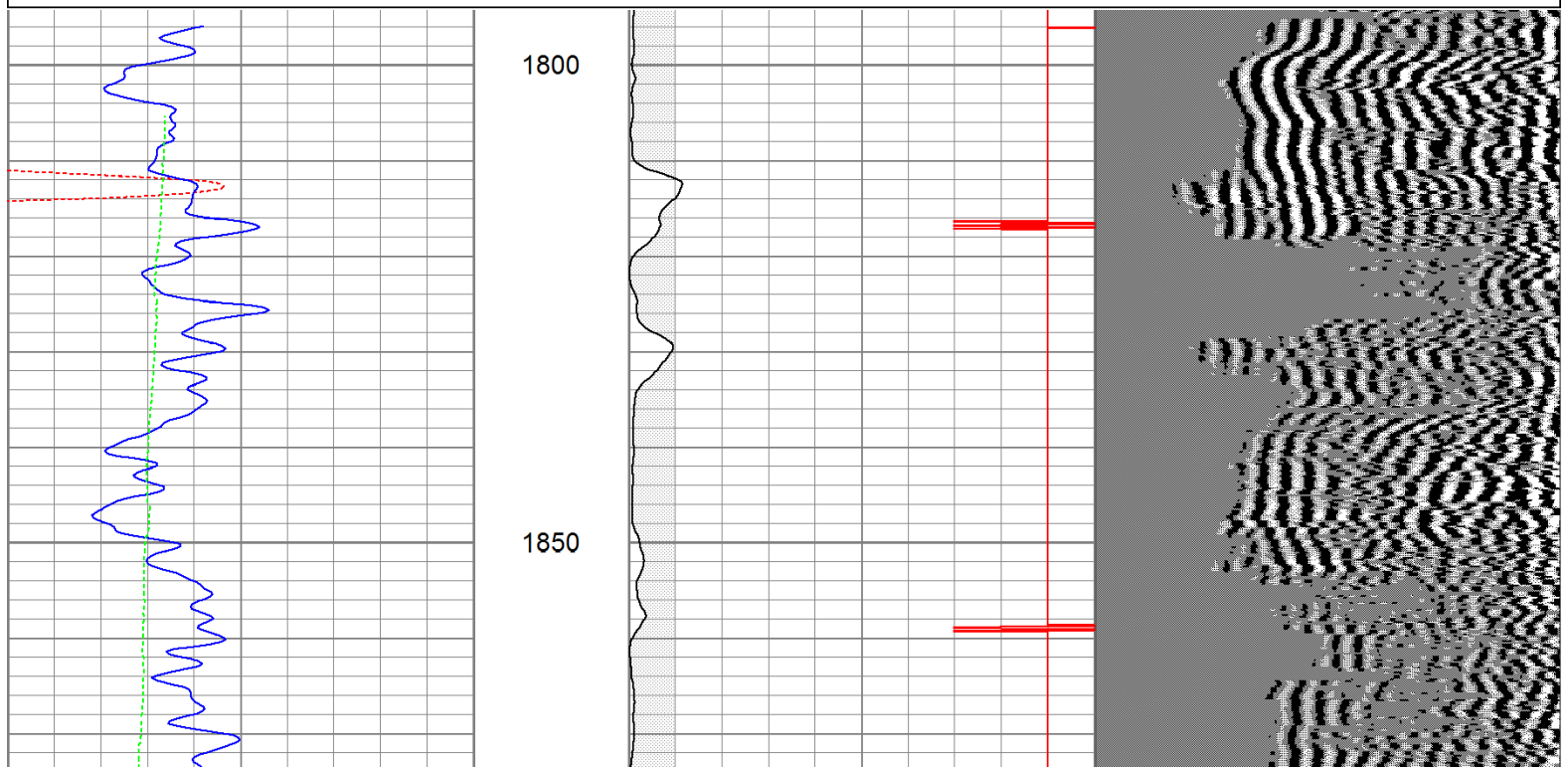
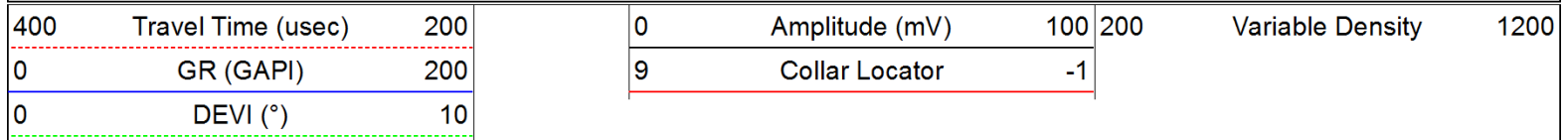
1900

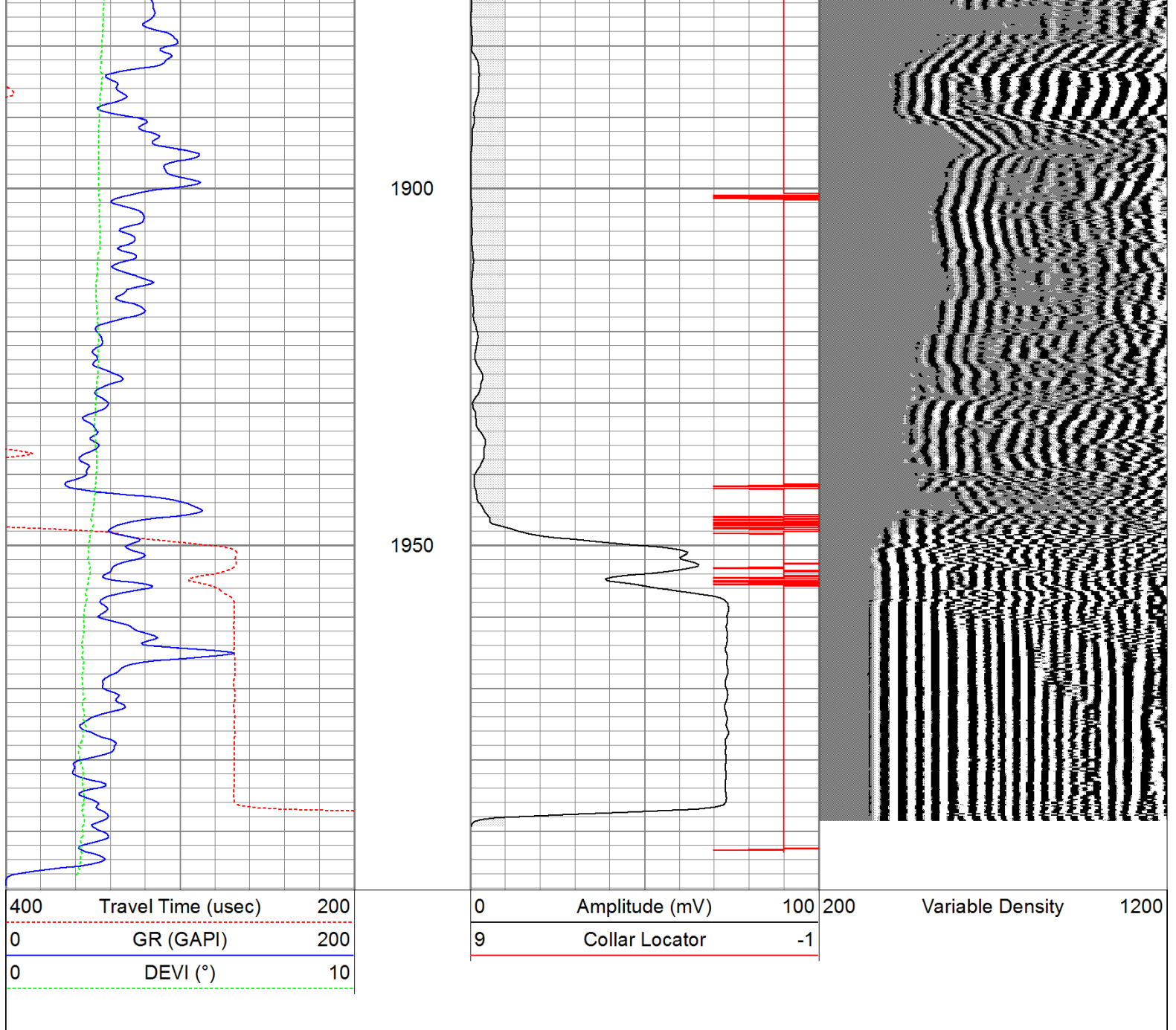




Repeat Pass

Database File: icehouse72211b.db
 Dataset Pathname: pass1
 Presentation Format: cbldig
 Dataset Creation: Fri Jul 22 10:59:07 2011 by Log Open-Cased 110302
 Charted by: Depth in Feet scaled 1:240





Calibration Report

Database File: icehouse72211b.db
 Dataset Pathname: pass1
 Dataset Creation: Fri Jul 22 10:59:07 2011 by Log Open-Cased 110302

Gamma Ray Calibration Report

Serial Number:	080616
Tool Model:	275D_INC
Performed:	Wed May 04 17:31:09 2011
Calibrator Value:	200.0 GAPI
Background Reading:	50.0 cps
Calibrator Reading:	250.0 cps
Sensitivity:	1.0000 GAPI/cps

Inclinometer Calibration Report

Performed: Wed May 04 17:39:54 2011

	Low Read.	High Read.	Low Ref.	High Ref.	
X Accelerometer	-3585.20	3595.40	-1.00	1.00	gee
Y Accelerometer	-3619.40	3520.00	-1.00	1.00	gee
Z Accelerometer					

Cement Bond Log Calibration Report

Serial Number:	081024				
Tool Model:	PROBEDIGITALCBL				
Performed:	Tue Jul 19 09:25:23 2011				
Depth:	93.4615	ft			
Casing Diameter:	5.5	in			
	3' Spacing		5' Spacing		
Signal Zero:	0		0		mV
Calibrated Amplitude:	85		85		mV
Reading at Signal Zero:	-0.00874023		-0.0092041		V
Reading in Free Pipe:	1.72476		1.66304		V
Gain:	49.0339		50.83		
Offset:	0.428567		0.467844		

Sensor	Offset (ft)	Schematic	Description	Len (ft)	OD (in)	Wt (lb)
			None	0.75	1.50	5.00
			Star	0.29	1.50	0.50
WVF3	9.04					
WVF5	8.04					
			CBL-PROBEDIGITALCBL (081024)	8.75	2.75	106.50
			PROBE DIGITAL CBL			
			Star	0.29	1.50	0.50
CCL	3.50					
ACCX	1.83					
ACCY	1.83					
ACCZ	1.83					
GR	0.83					
			GR-275D_INC (080616)	4.50	2.75	50.00
			2-3/4" GR-CCL with Inclination			

Dataset: icehouse72211b.db: field/well/run1/pass1
 Total Length: 14.58 ft
 Total Weight: 162.50 lb
 O.D. 2.75 in