

**CHEVRON - MID-CONTINENT EBIZ
11111 S WILCREST DR - DO NOT MAIL
HOUSTON, Texas**

SKR
SKR 698-09-AV-10

H&P 318/H&P/318

Post Job Summary

Cement Surface Casing

Prepared for: ELMER TATUM
Date Prepared: 03/19/09
Version: 1

Service Supervisor: GALLEGOS, JASON

Submitted by:

HALLIBURTON

The Road to Excellence Starts with Safety

| | | | | | | | |
|--|--|-----------------------|----------------------------------|-----------------------------|--|------------------------|--|
| Sold To #: 338668 | | Ship To #: 2713348 | | Quote #: | | Sales Order #: 6565669 | |
| Customer: CHEVRON - MID-CONTINENT EBIZ | | | | Customer Rep: Morgan, Randy | | | |
| Well Name: SKR | | | Well #: 698-09-AV-10 | | | API/UWI #: | |
| Field: SKINNER RIDGE | | City (SAP): PARACHUTE | | County/Parish: Garfield | | State: Colorado | |
| Contractor: H&P 318 | | | Rig/Platform Name/Num: H&P318 | | | | |
| Job Purpose: Cement Surface Casing | | | | | | | |
| Well Type: Development Well | | | Job Type: Cement Surface Casing | | | | |
| Sales Person: DUNNING, DUSTIN | | | Srvc Supervisor: GALLEGOS, JASON | | | MBU ID Emp #: 386647 | |

Job Personnel

| HES Emp Name | Exp Hrs | Emp # | HES Emp Name | Exp Hrs | Emp # | HES Emp Name | Exp Hrs | Emp # |
|----------------------------|---------|--------|-------------------------|---------|--------|------------------|---------|--------|
| BREES, MICHAEL | 5.5 | 459034 | CARPENTER, MARK Alan | 5.5 | 442360 | CLARKE, GERALD C | 5.5 | 441763 |
| GALLEGOS, JASON Michael | 5.5 | 386647 | WILKE, ANDREW J | 5.5 | 398822 | | | |

Equipment

| HES Unit # | Distance-1 way | HES Unit # | Distance-1 way | HES Unit # | Distance-1 way | HES Unit # | Distance-1 way |
|------------|----------------|------------|----------------|------------|----------------|------------|----------------|
| 10829462 | 120 MILES | 10950598 | 120 MILES | 10897909 | 120 MILES | 10872429 | 120 MILES |
| 10804487 | 120 MILES | 10025034 | 120 MILES | | | | |

Job Hours

| Date | On Location Hours | Operating Hours | Date | On Location Hours | Operating Hours | Date | On Location Hours | Operating Hours |
|----------|-------------------|-----------------|--|-------------------|-----------------|------|-------------------|-----------------|
| 03/18/09 | 3 | 3 | 03/19/09 | 2.5 | 1 | | | |
| TOTAL | | | Total is the sum of each column separately | | | | | |

Job

| Formation Name | Formation Depth (MD) | Top | Bottom | Job depth MD | Water Depth | Perforation Depth (MD) | From | To | Job Times | Date | Time | Time Zone |
|------------------------|----------------------|------|-------------------|--------------|-------------|------------------------|------|----|---------------|-----------------|-------|-----------|
| | | 0 | 1040 | | | | | | Called Out | 18 - Mar - 2009 | 14:45 | MST |
| Form Type | | BHST | | | | | | | On Location | 18 - Mar - 2009 | 21:00 | MST |
| Job depth MD | 1020. ft | | Job Depth TVD | 1040. ft | | | | | Job Started | 18 - Mar - 2009 | 22:34 | MST |
| Water Depth | | | Wk Ht Above Floor | 5. ft | | | | | Job Completed | 18 - Mar - 2009 | 23:37 | MST |
| Perforation Depth (MD) | | | | | | | | | Departed Loc | 19 - Mar - 2009 | 02:30 | MST |

Well Data

| Description | New / Used | Max pressure psig | Size in | ID in | Weight lbm/ft | Thread | Grade | Top MD ft | Bottom MD ft | Top TVD ft | Bottom TVD ft |
|--------------------------|------------|-------------------|---------|-------|---------------|--------|-------|-----------|--------------|------------|---------------|
| 12 1/4 Open Hole Section | | | | 12.25 | | | | | 1040. | | |
| 8 5/8 Surface Casing | NEW | | 8.625 | 8.097 | 24. | | | | 1020. | | |

Sales/Rental/3rd Party (HES)

| Description | Qty | Qty uom | Depth | Supplier |
|--|-----|---------|-------|----------|
| PLUG,CMTG,TOP,8 5/8,HWE,7.20 MIN/8.09 MA | 1 | EA | | |
| PORT. DAS W/CEMWIN;ACQUIRE W/HES, ZI | 1 | JOB | | |
| ADC (AUTO DENSITY CTRL) SYS, /JOB,ZI | 1 | JOB | | |

Tools and Accessories

| Type | Size | Qty | Make | Depth | Type | Size | Qty | Make | Depth | Type | Size | Qty | Make |
|--------------|------|-----|------|-------|-------------|------|-----|------|-------|----------------|-------|-----|------|
| Guide Shoe | | | | | Packer | | | | | Top Plug | 8.625 | 1 | |
| Float Shoe | | | | | Bridge Plug | | | | | Bottom Plug | | | |
| Float Collar | | | | | Retainer | | | | | SSR plug set | | | |
| Insert Float | | | | | | | | | | Plug Container | 8.625 | 1 | |
| Stage Tool | | | | | | | | | | Centralizers | | | |

Miscellaneous Materials

| Gelling Agt | Conc | Surfactant | Conc | Acid Type | Qty | Conc | % |
|---------------|------|------------|------|-----------|------|------|-----|
| Treatment Fld | Conc | Inhibitor | Conc | Sand Type | Size | | Qty |

| Fluid Data | | | | | | | | | |
|--|---------------------------|-------------------------------|--------|-----------------------------------|------------------------|---------------------------|------------------|--------------|------------------------|
| Stage/Plug #: 1 | | | | | | | | | |
| Fluid # | Stage Type | Fluid Name | Qty | Qty uom | Mixing Density lbm/gal | Yield ft ³ /sk | Mix Fluid Gal/sk | Rate bbl/min | Total Mix Fluid Gal/sk |
| 1 | FRESH WATER SPACER | | 30 | bbl | 8.33 | .0 | .0 | 5 | |
| 2 | DYE SPACER WITH POLYFLAKE | | 20 | bbl | 8.33 | .0 | .0 | 5 | |
| 3 | Lead Cement | VERSACEM (TM) SYSTEM (452010) | 140 | sacks | 12.3 | 2.37 | 13.76 | 6 | 13.42 |
| | 13.418 Gal | FRESH WATER | | | | | | | |
| 4 | Tail Cement | VERSACEM (TM) SYSTEM (452010) | 155 | sacks | 12.8 | 2.11 | 11.75 | 6 | 11.46 |
| | 11.456 Gal | FRESH WATER | | | | | | | |
| 5 | H2O DISPLACEMENT | | 62 | bbl | 8.33 | .0 | .0 | 8 | |
| Calculated Values | | Pressures | | Volumes | | | | | |
| Displacement | 62 | Shut In: Instant | | Lost Returns | NONE | Cement Slurry | 117.3 | Pad | |
| Top Of Cement | SURFACE | 5 Min | | Cement Returns | 20 | Actual Displacement | 62 | Treatment | |
| Frac Gradient | | 15 Min | | Spacers | 50 | Load and Breakdown | | Total Job | 229.3 |
| Rates | | | | | | | | | |
| Circulating | | Mixing | 6 | Displacement | 8 | Avg. Job | 7 | | |
| Cement Left In Pipe | Amount | 45.15 ft | Reason | Shoe Joint | | | | | |
| Frac Ring # 1 @ | ID | Frac ring # 2 @ | ID | Frac Ring # 3 @ | ID | Frac Ring # 4 @ | ID | | |
| The Information Stated Herein Is Correct | | | | Customer Representative Signature | | | | | |

The Road to Excellence Starts with Safety

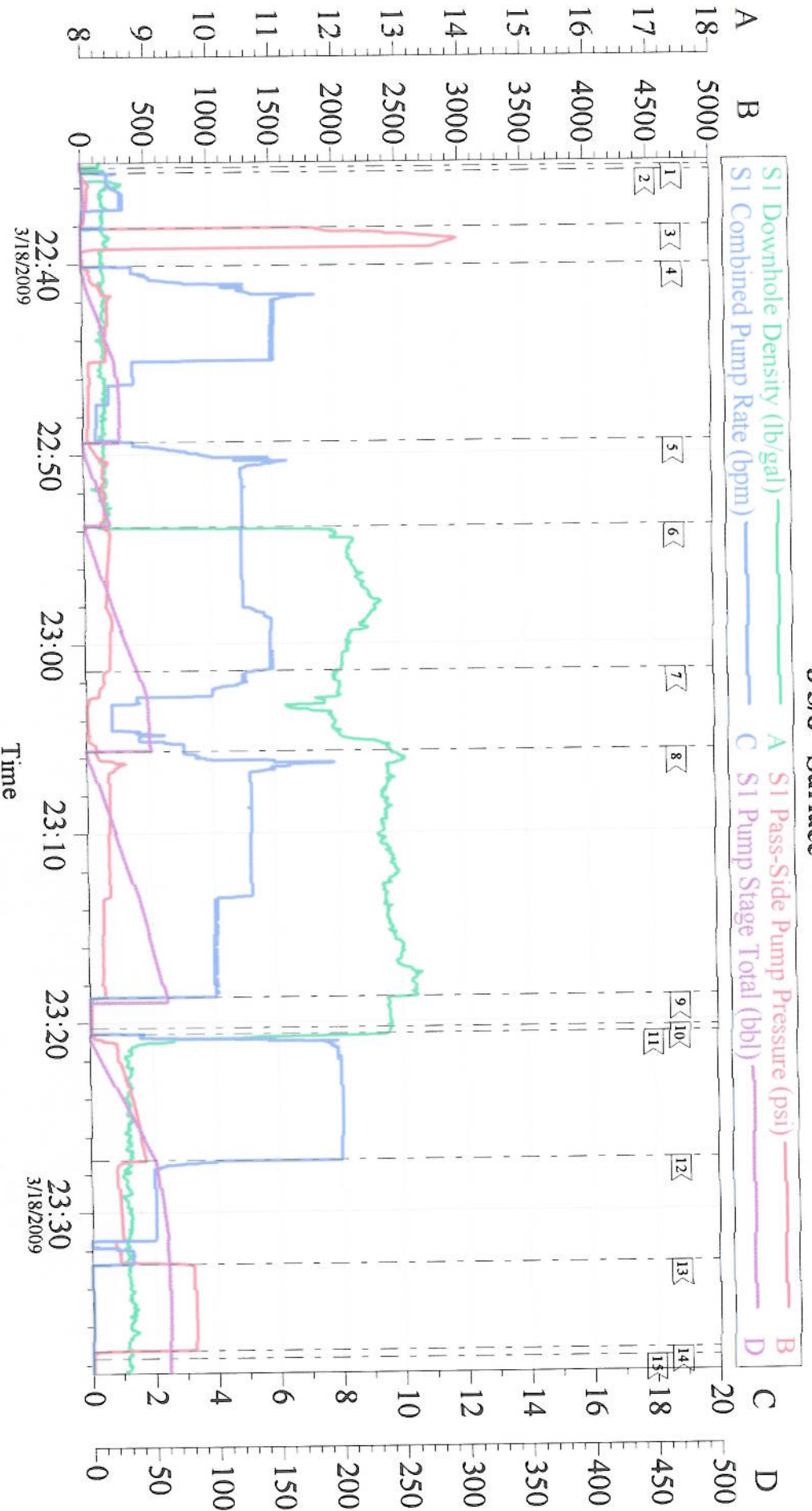
| | | | |
|--|----------------------------------|---|------------------------|
| Sold To #: 338668 | Ship To #: 2713348 | Quote #: | Sales Order #: 6565669 |
| Customer: CHEVRON - MID-CONTINENT EBIZ | Customer Rep: Morgan, Randy | | |
| Well Name: SKR | Well #: 698-09-AV-10 | API/UWI #: | |
| Field: SKINNER RIDGE | City (SAP): PARACHUTE | County/Parish: Garfield | State: Colorado |
| Legal Description: | | | |
| Lat: N 0 deg. OR N 0 deg. 0 min. 0 secs. | | Long: E 0 deg. OR E 0 deg. 0 min. 0 secs. | |
| Contractor: H&P 318 | Rig/Platform Name/Num: H&P318 | | |
| Job Purpose: Cement Surface Casing | Ticket Amount: | | |
| Well Type: Development Well | Job Type: Cement Surface Casing | | |
| Sales Person: DUNNING, DUSTIN | Srvc Supervisor: GALLEGOS, JASON | MBU ID Emp #: | 386647 |

| Activity Description | Date/Time | Cht # | Rate bbl/min | Volume bbl | | Pressure psig | | Comments |
|---------------------------------------|------------------|-------|--------------|------------|-------|---------------|--------|---|
| | | | | Stage | Total | Tubing | Casing | |
| Rig-Down Equipment | 03/18/2009 01:23 | | | | | | | |
| Call Out | 03/18/2009 14:45 | | | | | | | |
| Depart Yard Safety Meeting | 03/18/2009 15:50 | | | | | | | ATTENDED BY ENTIRE HES CREW |
| Crew Leave Yard | 03/18/2009 16:00 | | | | | | | |
| Arrive At Loc | 03/18/2009 18:45 | | | | | | | RIG RUNNING CASING |
| Assessment Of Location Safety Meeting | 03/18/2009 19:00 | | | | | | | ATTENDED BY ENTIRE HES CREW |
| Other | 03/18/2009 19:15 | | | | | | | SPOT EQUIPMENT |
| Pre-Rig Up Safety Meeting | 03/18/2009 19:30 | | | | | | | ATTENDED BY ENTIRE HES CREW |
| Rig-Up Equipment | 03/18/2009 19:40 | | | | | | | |
| Pre-Job Safety Meeting | 03/18/2009 22:00 | | | | | | | ATTENDED BY ENTIRE HES CREW |
| Start Job | 03/18/2009 22:34 | | | | | | | TP 1020', TD 1040', SJ 45.15', MWV 9#, CASING 8.625" 24# J55, HOLE 12.25" |
| Test Lines | 03/18/2009 22:38 | | 2 | 2 | | | 3000.0 | PRESSURE HELD |
| Pump Spacer 1 | 03/18/2009 22:40 | | 5 | 30 | | | 153.0 | FRESH WATER |
| Pump Spacer 2 | 03/18/2009 22:49 | | 5 | 20 | | | 157.0 | POLYFLAKE & DYE |
| Pump Lead Cement | 03/18/2009 22:53 | | 6 | 59.1 | | | 200.0 | 140 SACKS, MIXED @12.3 PPG, Q2.37 YIELD, 13.76 GAL/SK (BP-18) |

| Activity Description | Date/Time | Cht # | Rate bbl/ min | Volume bbl | | Pressure psig | | Comments |
|---|---------------------|----------|---------------------|---------------|-------|------------------|--------|--|
| | | | | Stage | Total | Tubing | Casing | |
| Slow Rate | 03/18/2009 23:01 | | | | | | | WATER VALVE WAS STUCK OPEN, SLOWED RATE TO REMEDY |
| Pump Tail Cement | 03/18/2009 23:05 | | 6 | 58.2 | | | 175.0 | 155 SACKS, MIXED @ 12.8 PPG, 2.11 YIELD, 11.75 GAL/SK (BP-19) |
| Shutdown | 03/18/2009 23:18 | | | | | | | |
| Drop Top Plug | 03/18/2009 23:20 | | | | | | | PLUG LAUNCHED |
| Pump Displacement | 03/18/2009 23:21 | | 8 | | | | 430.0 | FRESH WATER |
| Slow Rate | 03/18/2009 23:27 | | 2 | | | | 220.0 | |
| Bump Plug | 03/18/2009 23:32 | | 2 | | | | 235.0 | PRESSURED UP TO 797 PSI. |
| Check Floats | 03/18/2009 23:37 | | | | | | | FLOATS HELD |
| End Job | 03/18/2009 23:37 | | | | | | | PIPE WAS NOT MOVED DURING JOB. GOOD CIRCULATION THROUGHOUT JOB. 20 BBLS OF CEMENT TO SURFACE. |
| Post-Job Safety Meeting (Pre Rig-Down) | 03/18/2009 23:45 | | | | | | | ATTENDED BY ENTIRE HES CREW |
| Depart Location Safety Meeting | 03/19/2009 02:20 | | | | | | | ATTENDED BY ENTIRE HES CREW |
| Crew Leave Location | 03/19/2009 02:30 | | | | | | | THANK YOU FOR USING HALLIBURTON CEMENT, JASON GALLEGOS AND CREW. |

X

Chevron 8 5/8" Surface



Customer: Chevron
Well Description: SKR 698-09-AV-10
Company Rep: Elmer Tatum

Job Date: 18-Mar-2009
Job Type: Surface
Cement Supervisor: Jason Gallegos

Sales Order #: 6565669
ADC Used: Yes
Elite #/Operator: #11/Mark Carpenter