
CHEVRON - MID-CONTINENT EBIZ

**SKR 698-04-AV-14
SKINNER RIDGE
Garfield County , Colorado**

Cement Production Casing

05-Feb-2009

Job Site Documents

The Road to Excellence Starts with Safety

The Road to Excellence Starts With Safety			
Sold To #: 338668	Ship To #: 2695770	Quote #:	Sales Order #: 6480300
Customer: CHEVRON - MID-CONTINENT EBIZ		Customer Rep: Meier, Dan	
Well Name: SKR	Well #: 698-04-AV-14	API/UWI #:	
Field: SKINNER RIDGE	City (SAP): PARACHUTE	County/Parish: Garfield	State: Colorado
Contractor: CHEVRON	Rig/Platform Name/Num: H&P 318		
Job Purpose: Cement Production Casing			
Well Type: Development Well	Job Type: Cement Production Casing		
Sales Person: HARTLEY, RICHARD	Srv Supervisor: STILLSON, ERIC	MBU ID Emp #: 393789	

Job Personnel

HES Emp Name	Exp Hrs	Emp #	HES Emp Name	Exp Hrs	Emp #	HES Emp Name	Exp Hrs	Emp #
FRAMPTON, KIRK	6	438934	JONES, CHRISTOPHER E	6	343111	MANSPEAKER, GUY E	6	330171
STEMPKY, MICHAEL J	6	392967	STILLSON, ERIC W	6	393789	VANALSTYNE, TROY L	6	420256

Equipment

HES Unit #	Distance-1 way	HES Unit #	Distance-1 way	HES Unit #	Distance-1 way	HES Unit #	Distance-1 way
10025025	120 mile	10719776	120 mile	10829468	120 mile	10872429	120 mile
10897797	120 mile	11057895	120 mile	11139328	120 mile	6334	120 mile

Job Hours

Date	On Location Hours	Operating Hours	Date	On Location Hours	Operating Hours	Date	On Location Hours	Operating Hours
02-05-09	6	2						

TOTAL

Total is the sum of each column separately

Job

Job Times

Formation Name						Date	Time	Time Zone		
Formation Depth (MD)		Top		Bottom		Called Out	04 - Feb - 2009	22:00	MST	
Form Type		BHST				On Location	05 - Feb - 2009	02:00	MST	
Job depth MD		6020. ft		Job Depth TVD		6020. ft	Job Started	05 - Feb - 2009	05:20	MST
Water Depth		Wk Ht Above Floor			4. ft	Job Completed	05 - Feb - 2009	06:41	MST	
Perforation Depth (MD)		From		To		Departed Loc	05 - Feb - 2009	08:30	MST	

Well Data

Description	New / Used	Max pressure psig	Size in	ID in	Weight lbm/ft	Thread	Grade	Top MD ft	Bottom MD ft	Top TVD ft	Bottom TVD ft
7 7/8 Open Hole Section				7.875				1005.	6040.		
4 1/2 Production Casing	Unknown		4.5	4.	11.6			.	6020.		
8 5/8 Surface Casing	Unknown		8.625	8.097	24.			.	1005.		

Sales/Rental/3rd Party (HES)

Description	Qty	Qty uom	Depth	Supplier
PLUG,CMTG,TOP,4 1/2,HWE,3.65 MIN/4.14 MA	1	EA		
PORT. DAS W/CEMWIN,ACQUIRE W/HES, ZI	1	JOB		
ADC (AUTO DENSITY CTRL) SYS, /JOB,ZI	1	JOB		

Tools and Accessories

Type	Size	Qty	Make	Depth	Type	Size	Qty	Make	Depth	Type	Size	Qty	Make
Guide Shoe					Packer					Top Plug	4.5	1	
Float Shoe					Bridge Plug					Bottom Plug			
Float Collar					Retainer					SSR plug set			
Insert Float										Plug Container	4.5	1	
Stage Tool										Centralizers			

Miscellaneous Materials													
Gelling Agt		Conc		Surfactant		Conc		Acid Type		Qty		Conc	%
Treatment Fld		Conc		Inhibitor		Conc		Sand Type		Size		Qty	
Fluid Data													
Stage/Plug #: 1													
Fluid #	Stage Type	Fluid Name			Qty	Qty uom	Mixing Density lbm/gal	Yield ft ³ /sk	Mix Fluid Gal/sk	Rate bbl/min	Total Mix Fluid Gal/sk		
1	Polyflake Spacer				40.00	bbl	8.33	.0	.0	7.0			
2	Lead Cement	VARICEM (TM) CEMENT (452009)			300.0	sacks	12.8	1.6	7.31	7.0	7.12		
	7.123 Gal	FRESH WATER											
3	Tail Cement	VARICEM (TM) CEMENT (452009)			610.0	sacks	13.2	1.47	6.32	7.0	6.17		
	6.169 Gal	FRESH WATER											
4	KCL DISPLACEMENT				92.00	bbl	8.45	.0	.0	10.0			
Calculated Values				Pressures			Volumes						
Displacement	92.6	Shut In: Instant				Lost Returns	0	Cement Slurry	245	Pad			
Top Of Cement	79	5 Min				Cement Returns	0	Actual Displacement	92.6	Treatment			
Frac Gradient		15 Min				Spacers	40	Load and Breakdown		Total Job			
Rates													
Circulating	RIG	Mixing		7		Displacement	10	Avg. Job		8			
Cement Left In Pipe	Amount	47.5 ft	Reason	Shoe Joint									
Frac Ring # 1 @	ID	Frac ring # 2 @	ID	Frac Ring # 3 @	ID	Frac Ring # 4 @	ID						
The Information Stated Herein Is Correct					Customer Representative Signature								

The Road to Excellence Starts with Safety

Sold To #: 338668	Ship To #: 2695770	Quote #:	Sales Order #: 6480300
Customer: CHEVRON - MID-CONTINENT EBIZ	Customer Rep: Meier, Dan		
Well Name: SKR	Well #: 698-04-AV-14	API/UWI #:	
Field: SKINNER RIDGE	City (SAP): PARACHUTE	County/Parish: Garfield	State: Colorado
Legal Description:			
Lat: N 0 deg. OR N 0 deg. 0 min. 0 secs.		Long: E 0 deg. OR E 0 deg. 0 min. 0 secs.	
Contractor: CHEVRON	Rig/Platform Name/Num: H&P 318		
Job Purpose: Cement Production Casing	Ticket Amount:		
Well Type: Development Well	Job Type: Cement Production Casing		
Sales Person: HARTLEY, RICHARD	Srvs Supervisor: STILLSON, ERIC	MBU ID Emp #: 393789	

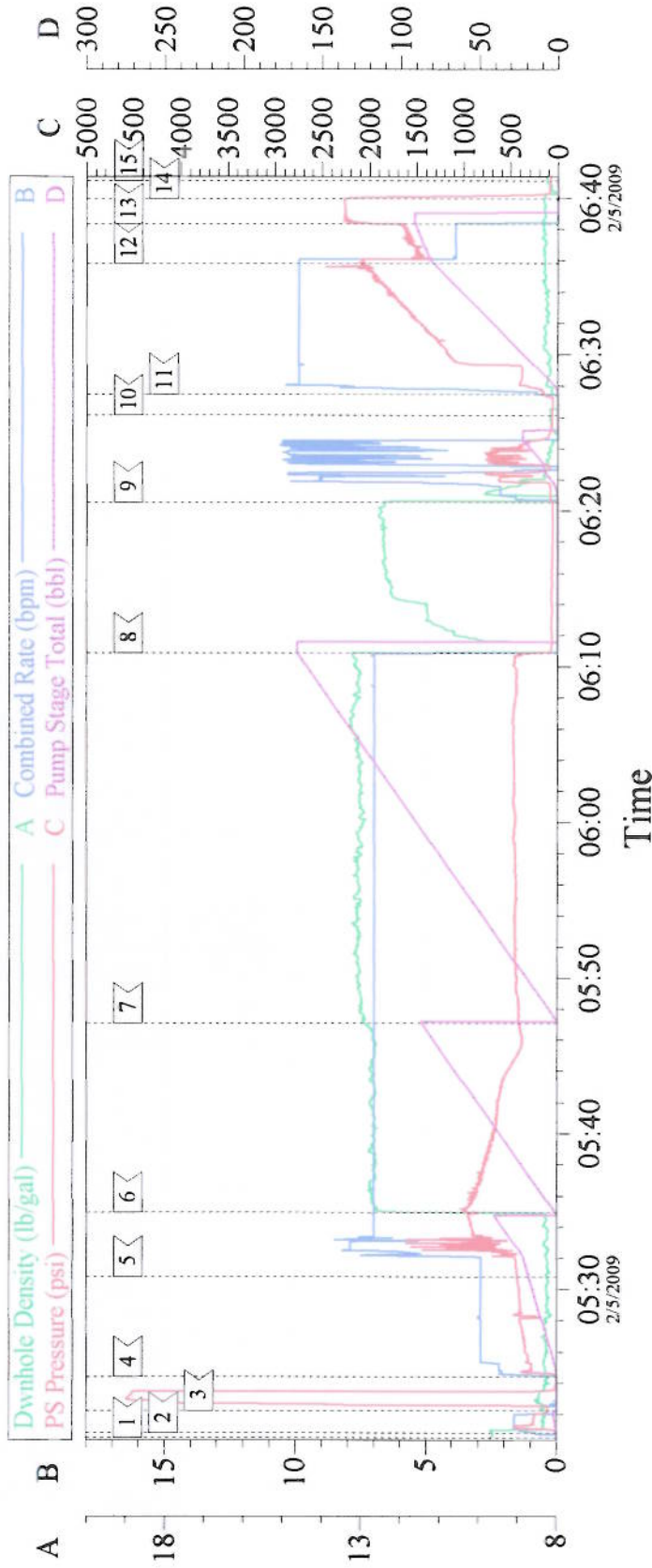
Activity Description	Date/Time	Cht #	Rate bbl/min	Volume bbl		Pressure psig		Comments
				Stage	Total	Tubing	Casing	
Call Out	02/04/2009 22:00							
Pre-Convoy Safety Meeting	02/05/2009 00:15							ENTIRE CREW
Arrive At Loc	02/05/2009 02:00							ARRIVED EARLY
Assessment Of Location Safety Meeting	02/05/2009 02:05							RIG RUNNING CASING
Pre-Rig Up Safety Meeting	02/05/2009 02:55							ENTIRE CREW
Rig-Up Equipment	02/05/2009 03:00							1 PICK UP, 1 HT400 PUMP TRUCK, 1 660 BULK CEMENT TRUCK, 1 BULK CEMENT SILO, 1 IRON TRAILER, 1 COMPACT HEAD
Pre-Job Safety Meeting	02/05/2009 04:45							ENTIRE CREW AND RIG CREW
Start Job	02/05/2009 05:20							TD 6040 TP 6020 SJ 47.5 FC 5972.5 MW 10.2, 8 5/8 24# SURFACE CSG SET AT 1005.
Pump Water	02/05/2009 05:20		1.5	2			273.0	FILL LINES BEFORE TESTING, BP NOT AVAILABLE.
Pressure Test	02/05/2009 05:22		0.5				4570.0	PRESSURE HELD NO LEAKS
Pump Spacer 1	02/05/2009 05:24		3	20			473.0	FRESH WATER
Pump Spacer 2	02/05/2009 05:30		7	20			943.0	FRESH WATER WITH 1 BAG POLYFLAKE, PREMIXED CEMENT AND WEIGHED WITH SCALES THEN SPED TO 7 BPM.

Cementing Job Log

Activity Description	Date/Time	Cht #	Rate bbl/min	Volume bbl		Pressure psig		Comments
				Stage	Total	Tubing	Casing	
Pump Lead Cement	02/05/2009 05:34		7	85.5			900.0	300 SKS, 12.8 PPG, YIELD 1.6, WATER REQ 7.31
Pump Tail Cement	02/05/2009 05:47		7	159.7			470.0	610 SKS, 13.3 PPG, YIELD 1.47, WATER REQ 6.32
Shutdown	02/05/2009 06:10							
Clean Lines	02/05/2009 06:20							CLEAN LINES AND PUMP BEFORE DROPPING PLUG
Drop Top Plug	02/05/2009 06:26							VERIFIED PLUG LEFT
Pump Displacement	02/05/2009 06:27		10	92.6			2160.0	1 1/2 SKS KCL PER 10 BBLs. CAUGHT PRESSURE AT 16 BBLs GONE.
Slow Rate	02/05/2009 06:35		4	80			1658.0	SLOW RATE TO BUMP PLUG
Bump Plug	02/05/2009 06:38		4	92.6			2250.0	PLUG LANDED, BUMPED 500 PSI OVER TO 2250 PSI
Check Floats	02/05/2009 06:39							FLOATS HELD, NO ANNULAR FLOW AFTER PLUG LANDED.
End Job	02/05/2009 06:41							GOOD RETURNS THROUGHOUT, DID NOT MOVE PIPE.
Post-Job Safety Meeting (Pre Rig-Down)	02/05/2009 06:45							ENTIRE CREW
Rig-Down Equipment	02/05/2009 07:00							
Pre-Convoy Safety Meeting	02/05/2009 08:25							ENTIRE CREW
Crew Leave Location	02/05/2009 08:30							THANK YOU FOR USING HALLIBURTON, ERIC STILLSON AND CREW.

CHEVRON

4 1/2 PRODUCTION



Event Log

1	START JOB	05:20:30	2	FILL LINES	05:20:49	3	TEST LINES	05:22:14
4	H2O SPACER	05:24:24	5	POLYFLAKE SPACER	05:30:50	6	LEAD CEMENT	05:34:56
7	TAIL CEMENT	05:47:05	8	SHUTDOWN	06:10:52	9	CLEAN LINES	06:20:33
10	DROP PLUG	06:26:08	11	KCL DISPLACEMENT	06:27:28	12	SLOW RATE	06:35:50
13	BUMP PLUG	06:38:20	14	CHECK FLOATS	06:39:57	15	END JOB	06:41:08

Customer:	WILLIAMS	Job Date:	02-05-09	Ticket #:	6480300
Well Desc:	SKR 698-04-AV-14	JOB TYPE:	PRODUCTION	ADC:	YES
COMPANY REP:	DAN MEIER	CEMENTER:	ERIC STILLSON	OPERATOR/PUMP TRUCK:	GUY MANSPEAKER/ ELITE #11

CemWin v1.7.2
05-Feb-09 06:58

HALLIBURTON

Water Analysis Report

Company: CHEVRON/H&P 318

Submitted by: ERIC STILLSON

Attention: J.TROUT/J.BRADY

Lease SKR

Well # 698-04-AV-14

Date: 2/5/2009

Date Rec.: 2/5/2009

S.O.# 6480300

Job Type: PRODUCTION

Specific Gravity	MAX	1
pH	8	6.8
Potassium (K)	5000	450 Mg / L
Calcium (Ca)	500	120 Mg / L
Iron (FE2)	300	0 Mg / L
Chlorides (Cl)	3000	500 Mg / L
Sulfates (SO ₄)	1500	<200 Mg / L
Chlorine (Cl ₂)		0 Mg / L
Temp	40-80	80 Deg
Total Dissolved Solids		1100 Mg / L

Respectfully: ERIC STILLSON

Title: CEMENTING SUPERVISOR

Location: Grand Junction, CO

NOTICE:

This report is limited to the described sample tested. Any person using or relying on this report agrees that Halliburton shall not be liable for any loss or damage whether due to act or omission resulting from such report or its

H&P 318

Pre-Planned Job Procedure Single Stage

RATE	EVENT	VOLUME	SACKS	WEIGHT	YIELD	GAL/ SK
1	Start Job					
6	Test Lines	4500.0				
9	H2O/ POLYFLAKE SPACER	40.0				
13	Lead Cement	85.5	300	12.8	1.6	7.31
15	Tail Cement	159.7	610	13.2	1.47	6.32
	SHUTDOWN/CLEAN LINES					
22	Displacement	92.6		Mud Wt.	10.2	
1085	Slow Rate	80.0		Casing	4.5	11.6
26	Bump Plug	1430		Disp Fluid	8.45	
	PSI Over	1930		Surface @	1005	
	End Job					
			Do Not Overdisplace			
DISPLACEMENT	TOTAL PIPE	SHOE JOINT LENGTH	ANN FACTOR	BBL/FT	H2O REQ.	
92.6	6020	47.50	0.0406	0.0155	350	
PSI to Lift Pipe	3706	*****Use Mud Scales on Each Tier*****				
Total Displacement	92.57					
CALCULATED DIFFERENTIAL PSI	1430	TOTAL FLUID PUMPED	378			
HOT	3916	TOT	2104	Co. Rep.:	DAN MEIER	
HOL	2025	TOL	79	SO#	6480300	