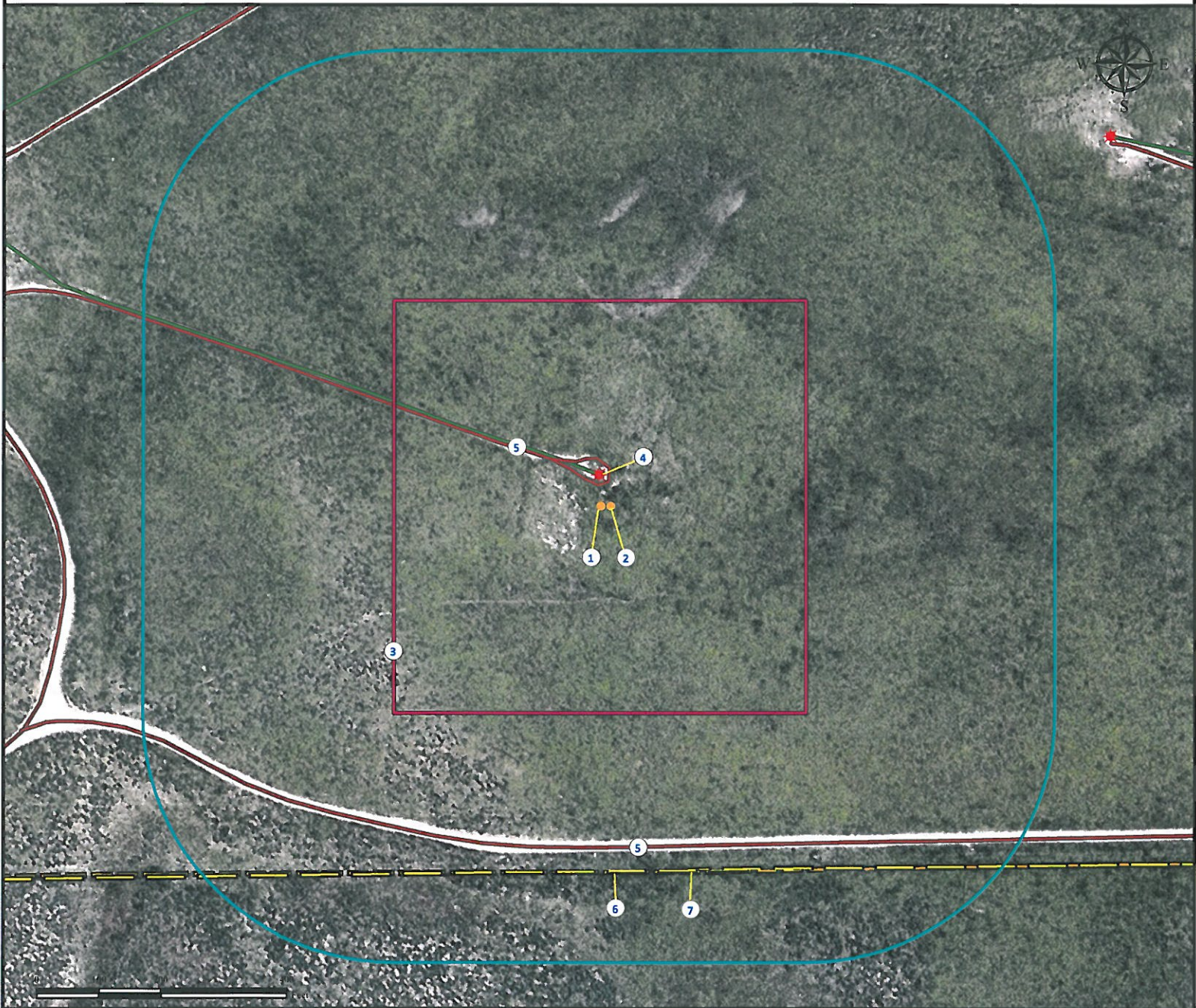


Location Drawing CAMP 3N-25HZ

Horizontal Multi Well Pad

SE¼ SW¼ SECTION 25, TOWNSHIP 3 NORTH, RANGE 66 WEST OF THE 6TH PRINCIPAL MERIDIAN



- | | | |
|----------------------------------|--|-------------------------------|
| 1. Proposed Well CAMP 3N-25HZ. | 4. Existing well HSR-SWENSSON 14-25A is $\pm 47'$ N. | 7. Powerline is $\pm 583'$ S. |
| 2. Proposed Well CAMP 28N-25HZ. | 5. Private roads are $\pm 30'$ N and $\pm 541'$ S. | |
| 3. Operational Disturbance Area. | 6. Fence is $\pm 585'$ S. | |

Legend

- | | | |
|---------------|------------------|----------------------|
| Proposed Well | Disturbance Area | Fence |
| Existing Well | 400' Radius | Private Road |
| | Power Line | Underground Pipeline |

Reference Location

** All Measurements are Made from
Reference Well CAMP 3N-25HZ **
Lat: 40.190778° Long: -104.727640° (NAD83)
Elevation: 5002 Feet

Surface Use: Rangeland



Use our resources to find yours!
www.petro-fs.com
(303) 928-7128

Field Date: 06/29/2011
Drafting Date: 07/06/2011
Drafter: DMM
Checked By: BHF

Data Sources:
- Aerial courtesy of NAIP (2009)

Prepared for: Petroleum Corporation
KERR-MCGEE OIL & GAS ONSHORE LP