

DWG: F:\Projects\010-0722\MUN\Final Plans\04-05_100722_DSIT.dwg
DATE: Apr 05, 2011 2:17pm
USER: jbovser
100722_DeltaPetro_BM
XREFS: 100722_BLK 100722_PBASE

NOTES:

- SITE FEATURES AND TOPOGRAPHY WAS PROVIDED BY SCHMUESER GORDON MEYER, 118 WEST 6TH STREET, SUITE 200, GLENWOD SPRINGS, CO 81601 (970) 945-1004.
- BENCHMARK:
DELTA CONTROL POINT #7
NORTHING: 531730.793
EASTING: 358637.208

LATITUDE: 39d16'16.955330"
LONGITUDE: -107d45'56.611990"
(NAD1983)
- ALL CONTOUR INFORMATION USED FOR DESIGN WILL NEED TO BE FIELD VERIFIED.
- POND VOLUMES SHOWN ON PLANS ARE MEASURED FROM WATER SURFACE ELEVATION TO BOTTOM OF POND.
- EQUIPMENT LAYOUT WITHIN LOAD IN/OUT AREA SHALL BE DESIGNED BY OTHERS. EQUIPMENT SHOWN FOR ILLUSTRATIVE PURPOSES ONLY.

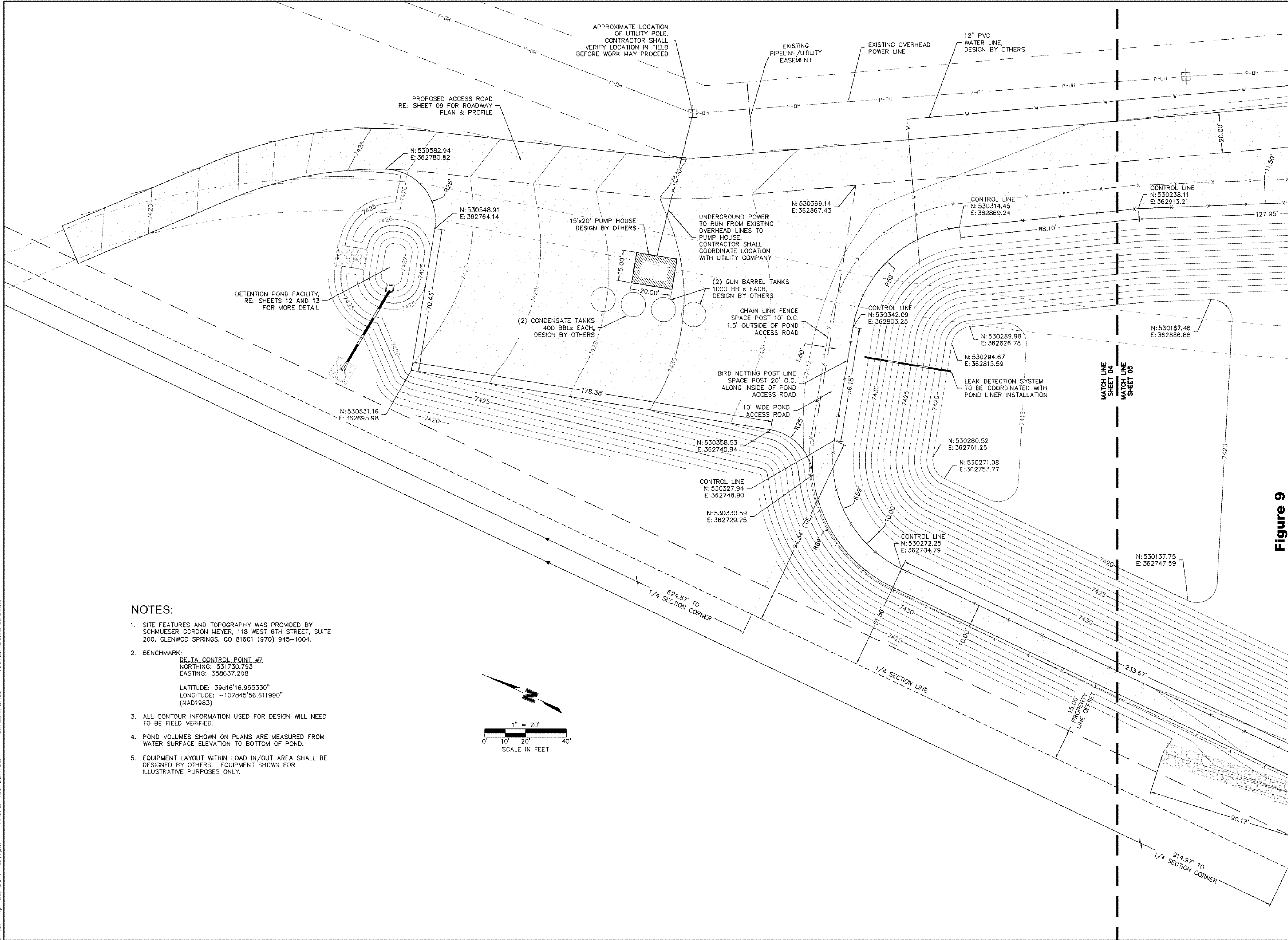
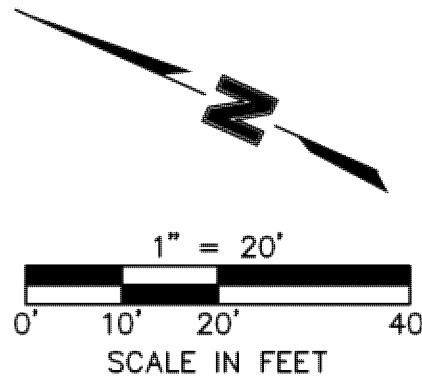


Figure 9


OLSSON
ASSOCIATES

143 Union Boulevard, Suite 700
Lakewood, CO 80228-1825

TEL 720.962.6072
FAX 720.962.6195
www.olaconsulting.com

NOTE
THIS DOCUMENT HAS BEEN
RELEASED BY OLSSON
ASSOCIATES ONLY FOR
REVIEW BY REGULATORY
AGENCIES AND OTHER
PROFESSIONALS, AND IS
SUBJECT TO CHANGE. THIS
DOCUMENT IS NOT TO BE
USED FOR CONSTRUCTION.

OLSSON ASSOCIATES ASSUMES
NO RESPONSIBILITY FOR
EXISTING UTILITY LOCATIONS
(HORIZONTAL OR VERTICAL). THE
EXISTING UTILITIES SHOWN ON
THIS DRAWING HAVE BEEN
PLOTTED FROM THE BEST
AVAILABLE INFORMATION. IT IS
HOWEVER THE RESPONSIBILITY
OF THE CONTRACTOR TO FIELD
VERIFY THE LOCATION OF ALL
UTILITIES PRIOR TO THE
COMMENCEMENT OF ANY
CONSTRUCTION ACTIVITIES.



UNCC
UNIVERSITY OF NORTHERN COLORADO
CENTER OF URBAN DESIGN
800.562.1987
www.uncc.org

CALL 1-800-922-1987 SEVENTY TWO
HOURS IN ADVANCE BEFORE YOU
DIG, GRADE, OR EXCAVATE FOR THE
MARKING OF UNDERGROUND
MEMBER UTILITIES

REV	NO	DATE	REVISIONS DESCRIPTION
	1	12.07.2010	ADD LOADING AREA SOUTHEAST OF POND
	2	12.29.2010	ADD LOADING AREA NORTH OF POND
	3	01.25.2011	ADD BIRD NETTING PLANS
	4	04.05.2011	100% CONSTRUCTION DOCUMENTS

REV	NO	DATE	REVISIONS
		2010	

DETAILED SITE PLAN

NORTH VEGA WATER IMPOUNDMENT
DELTA PETROLEUM CORPORATION

MESA COUNTY, COLORADO

drawn by: BLM
checked by: WEP
approved by: WEP
QA/QC by: LCP
project no.: 010-0722
drawing no.: 04-05_100722_DSIT.dwg
date: 04.18.2011

SHEET
04 of 14

DWG: F:\Projects\010-0722\1\UN\Finl_Plan\04-05_100722_DSIT.dwg
DATE: Apr 05, 2011 2:18pm
USER: jbovser
XREFS: 100722_BLK 100722_PBASE 100722_DeltaPetro_BM

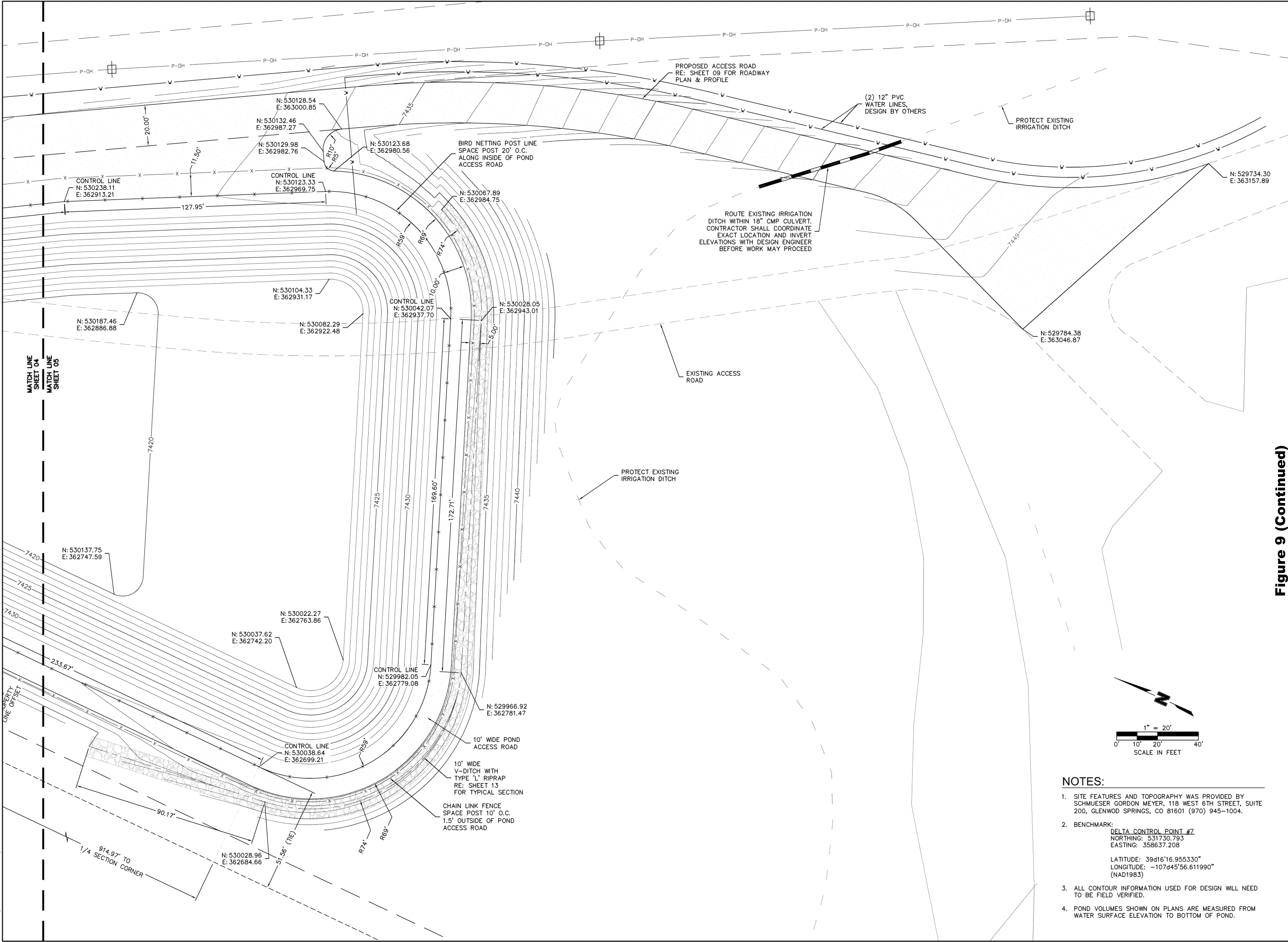


Figure 9 (Continued)

OLSSON
ASSOCIATES

143 Union Boulevard, Suite 700
Lakewood, CO 80228-1825
TEL 720.962.6072
FAX 720.962.6155
www.olaconsulting.com

NOTE
THIS DOCUMENT HAS BEEN
RELEASED BY OLSSON
ASSOCIATES ONLY FOR
REVIEW BY REGULATORY
AGENCIES AND OTHER
PROFESSIONALS, AND IS
SUBJECT TO CHANGE. THIS
DOCUMENT IS NOT TO BE
USED FOR CONSTRUCTION.

OLSSON ASSOCIATES ASSUMES
NO RESPONSIBILITY FOR
EXISTING UTILITY LOCATIONS
(HORIZONTAL OR VERTICAL). THE
EXISTING UTILITIES SHOWN ON
THIS DRAWING HAVE BEEN
PLOTTED FROM THE BEST
AVAILABLE INFORMATION. IT IS
HOWEVER THE RESPONSIBILITY
OF THE CONTRACTOR TO FIELD
VERIFY THE LOCATION OF ALL
UTILITIES PRIOR TO THE
COMMENCEMENT OF ANY
CONSTRUCTION ACTIVITIES.

UNCC
UTILITY NOTIFICATION
CENTER OF COLORADO
800.562.1987
www.uncc.org

CALL 1-800-922-1987 SEVENTY TWO
HOURS IN ADVANCE BEFORE YOU
DIG, GRADE, OR EXCAVATE FOR THE
MARKING OF UNDERGROUND
MEMBER UTILITIES

REV	NO	DATE	REVISIONS DESCRIPTION
1	12.07.2010	ADD LOADING AREA SOUTH EAST OF POND	
2	12.29.2010	ADD LOADING AREA NORTH OF POND	
3	01.25.2011	ADD BIRD NETTING PLANS	
4	04.05.2011	100% CONSTRUCTION DOCUMENTS	

REV	NO	DATE	REVISIONS
		2010	

DETAILED SITE PLAN

NORTH VEGA WATER IMPOUNDMENT
DELTA PETROLEUM CORPORATION

MESA COUNTY, COLORADO

drawn by: BLM
checked by: WEP
approved by: WEP
QA/QC by: LCP
project no.: 010-0722
drawing no.: 04-05_100722_DSIT.dwg
date: 04.18.2011

SHEET
05 of 14