



*** 106179 ***
DUAL INDUCTION GUARD LOG
COMPENSATED DENSITY
COMPENSATED NEUTRON

PHOENIX SURVEYS, INC.

Company	Maralex Resources Inc.	Company	Maralex Resources Inc.
Well	Trail Canyon 24-3	Well	Trail Canyon 24-3
Field	Trail Canyon	Field	Trail Canyon
County	Rio Blanco	County	Rio Blanco
State	CO	State	CO
Location:	API #: 1234' FSL & 1664' FEL Sec. - 24 Twp - 4S, Rge - 101W 05-103-10962 SEC TWP RGE	Other Services Gamma Ray Caliper	
Permanent Datum	G.L.	Elevation	6981'
Log Measured From	K.B.		
Drilling Measured From	K.B.		
Elevation		K.B. 6998' D.F. 6997' G.L. 6981'	
Date	September 9, 2007		
Run Number	1		
Depth Driller	6840'		
Depth Logger	6836'		
Bottom Logged Interval	6836'		
Top Log Interval	Casing		
Casing Driller	7" @ 2818'		
Casing Logger	2818'		
Bit Size	6 1/4"		
Type Fluid in Hole	Gel/Mud		
Density / Viscosity	8.9 / 47		
pH / Fluid Loss	9.0 / 4.8		
Source of Sample	Flow Line		
Rm @ Meas. Temp	NA @ NA° F		
Rmf @ Meas. Temp	NA / NA		
Rmc @ Meas. Temp	NA / NA		
Source of Rmf / Rmc	NA / NA		
Rm @ BHT	NA @ NA° F		
Time Circulation Stopped	0330		
Time Logger on Bottom	1100		
Maximum Recorded Temperature	NA° F		
Equipment Number	4300		
Location	Roosevelt, UT		
Recorded By	Kelly Keaver		
Witnessed By	Christi Reid		

<<< Fold Here >>>

All interpretations are opinions based on inferences from electrical or other measurements and we cannot and do not guarantee the accuracy or correctness of any interpretation, and we shall not, except in the case of gross or willful negligence on our part, be liable or responsible for any loss, costs, damages, or expenses incurred or sustained by anyone resulting from any interpretation made by any of our officers, agents or employees. These interpretations are also subject to our general terms and conditions set out in our current Price Schedule.

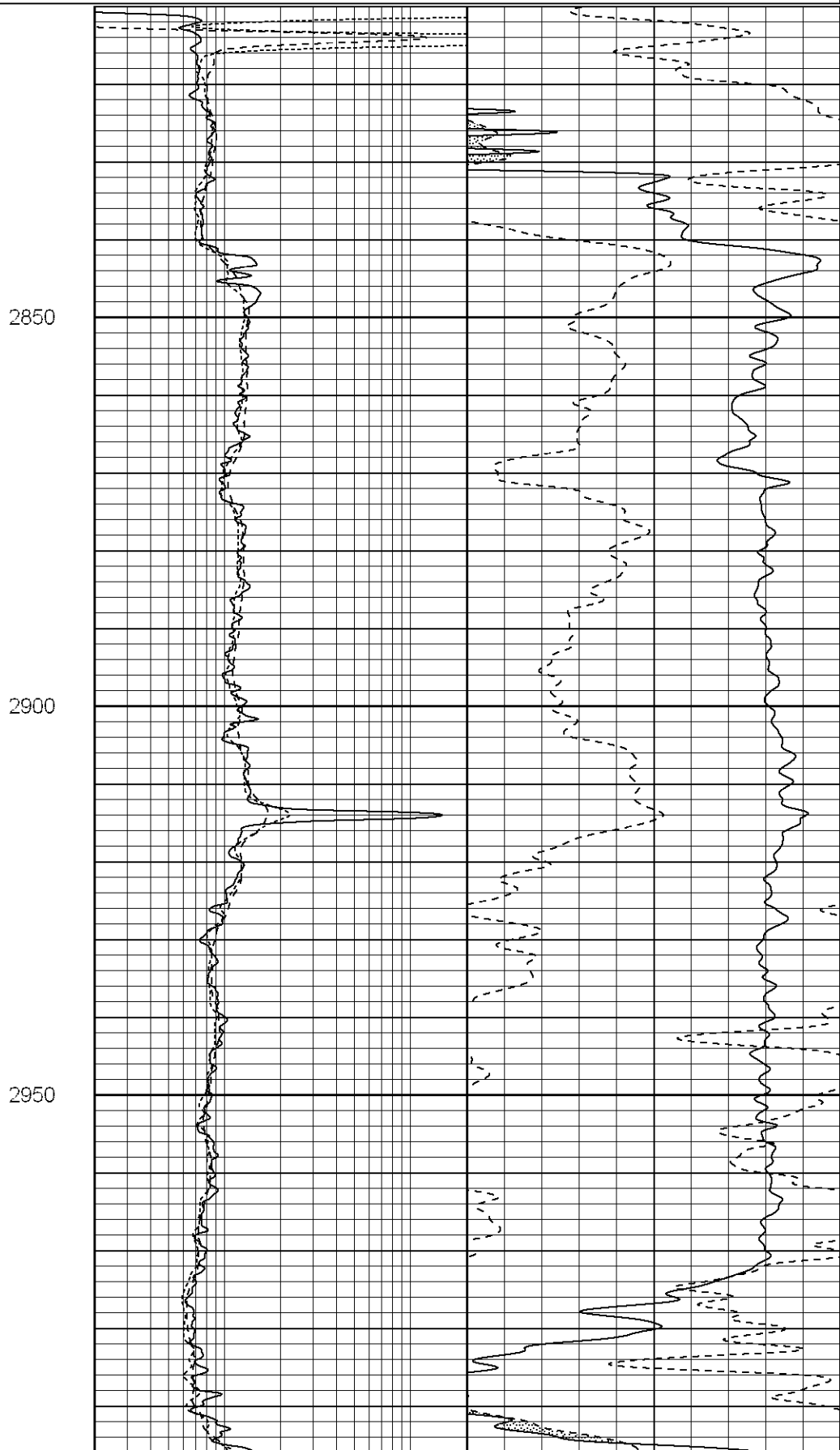
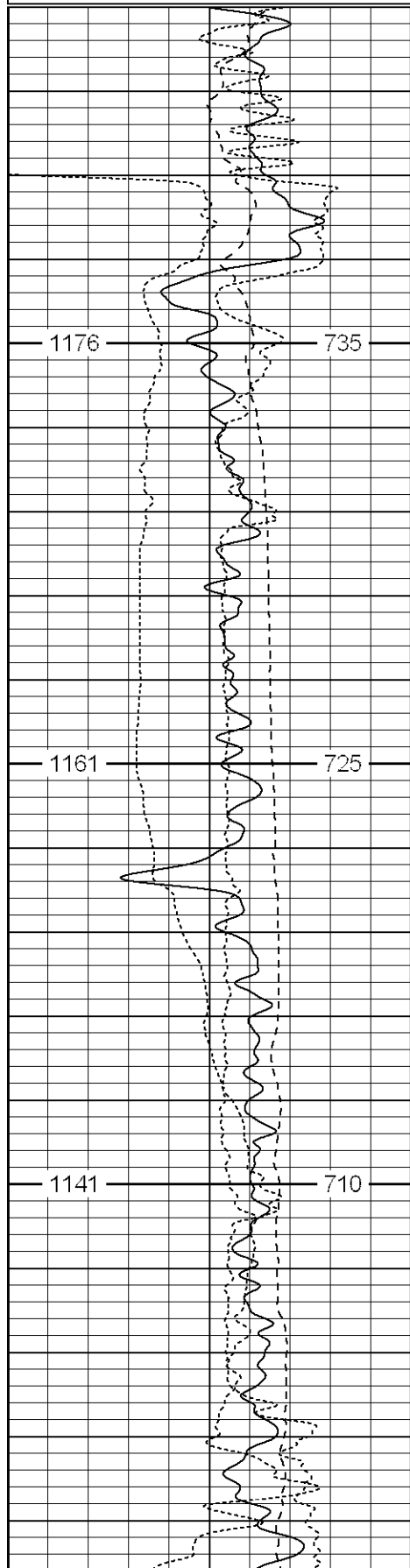
Comments

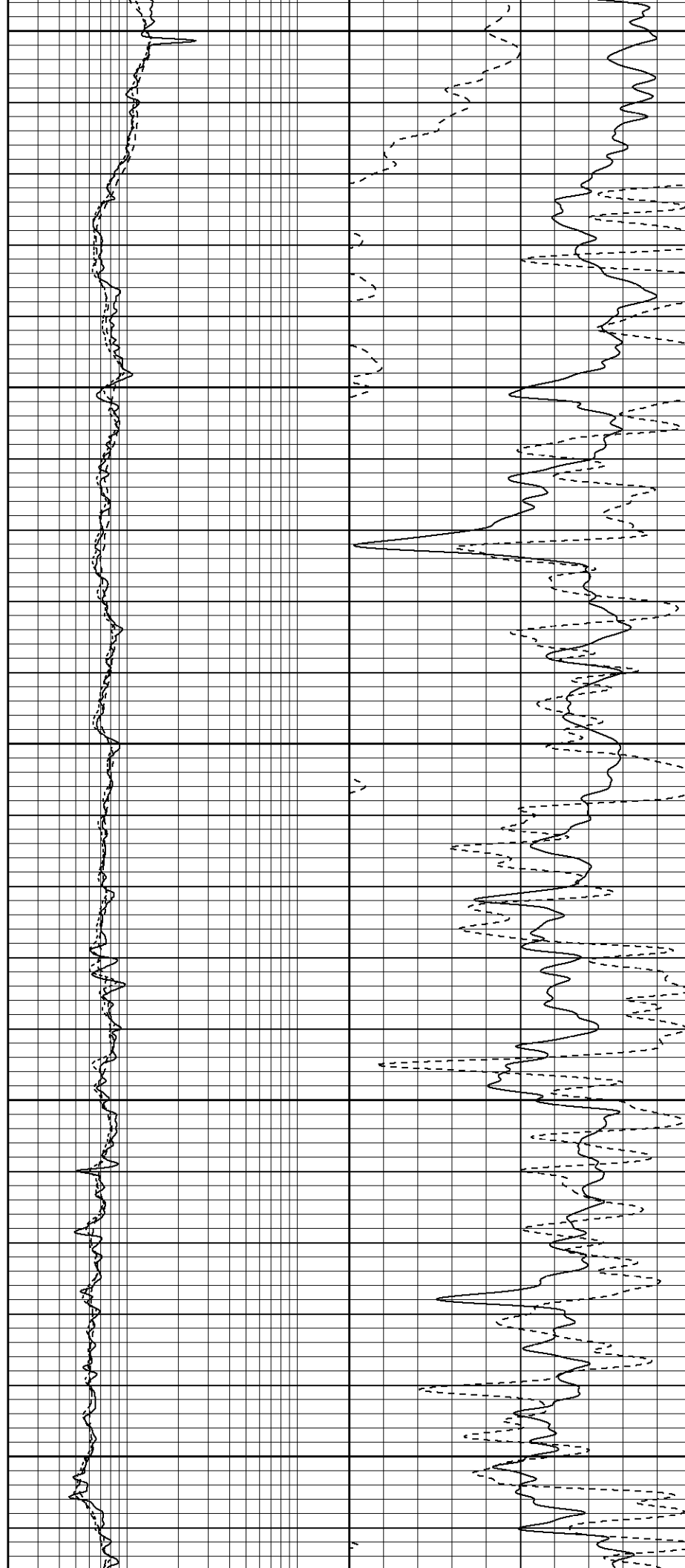
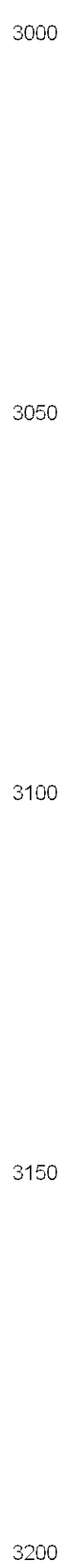
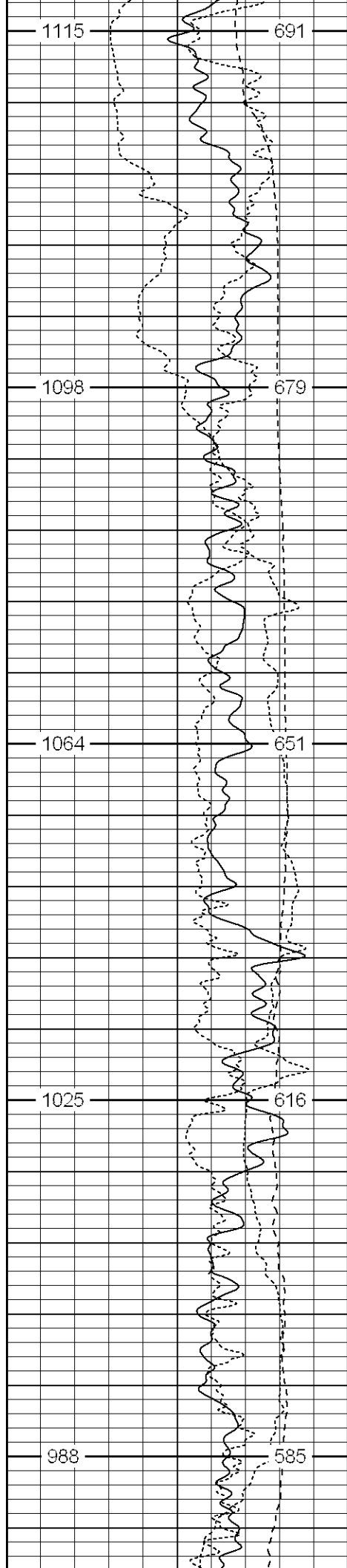
Thank You For Using Phoenix Surveys !!
Annular Volume Calculated Using 4.5 " Casing.
API # 05-103-10962
Drilled by: L&W Drilling Rig #1

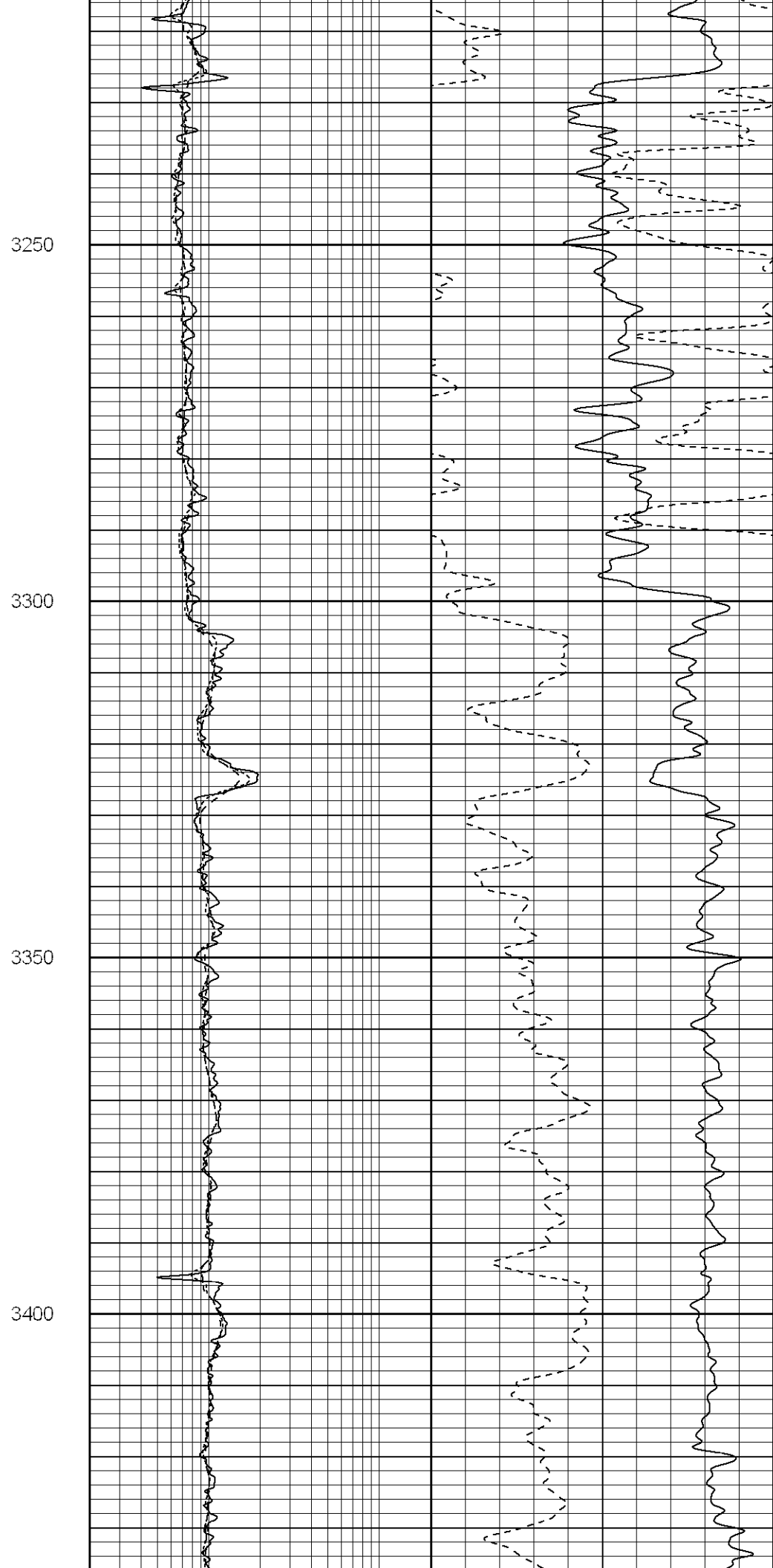
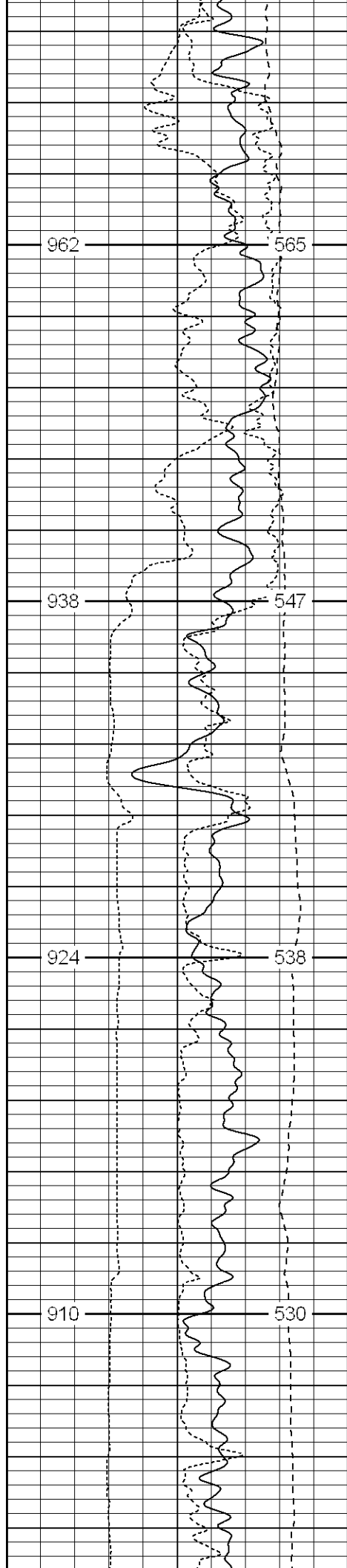
Database File: 106179.db
Dataset Pathname: pass3
Presentation Format: split6
Dataset Creation: Sun Sep 09 09:03:12 2007 by Log Warrior Version 6.6
Charted by: Depth in Feet scaled 1:240

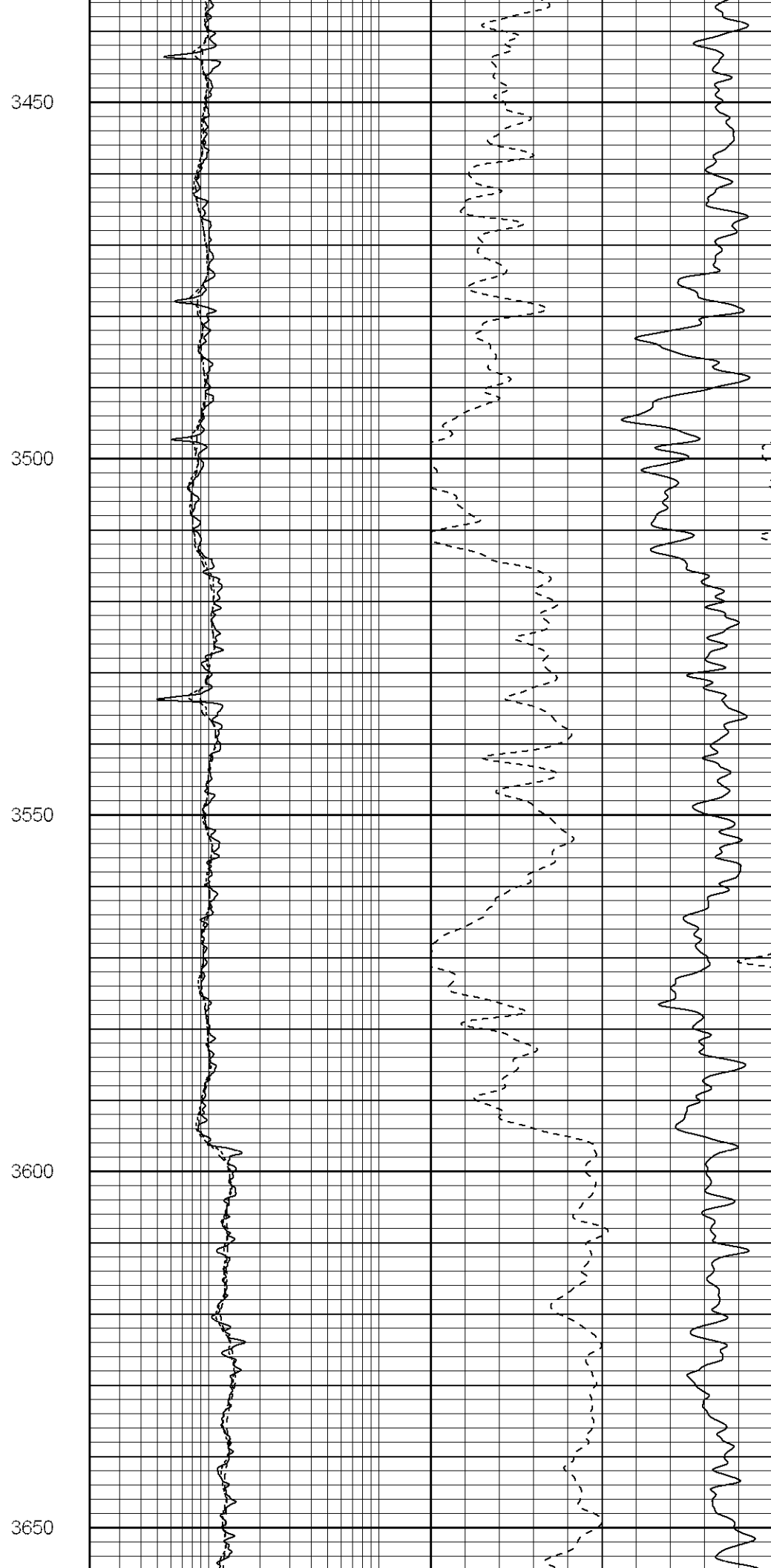
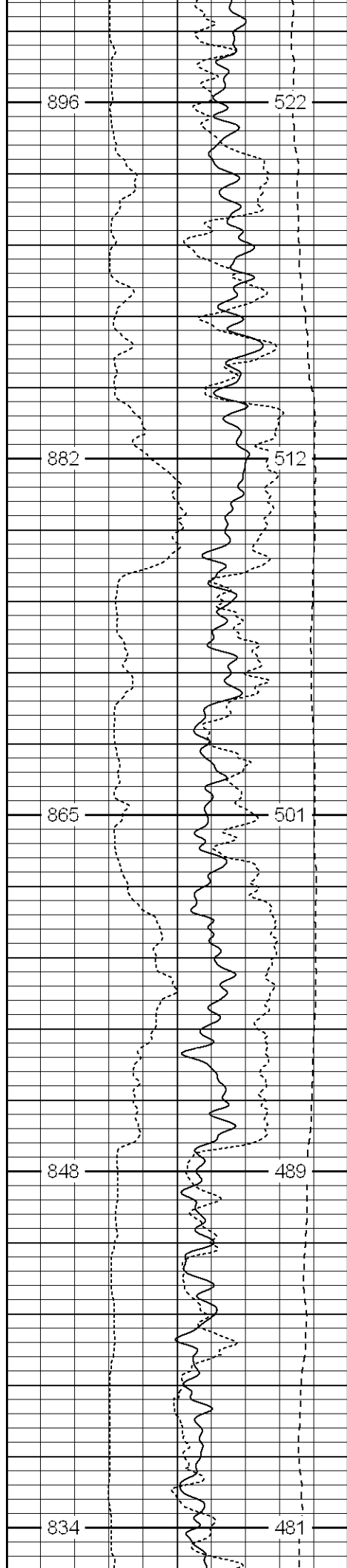
-0.5	Corr (g/cc)	0.5
4	Density Caliper (in)	14
0	Gamma Ray (GAPI)	150
14	DCAL (in)	24
0	Spontaneous Potential (mV)	100
TBHV (ft3)	ABHV (ft3)	

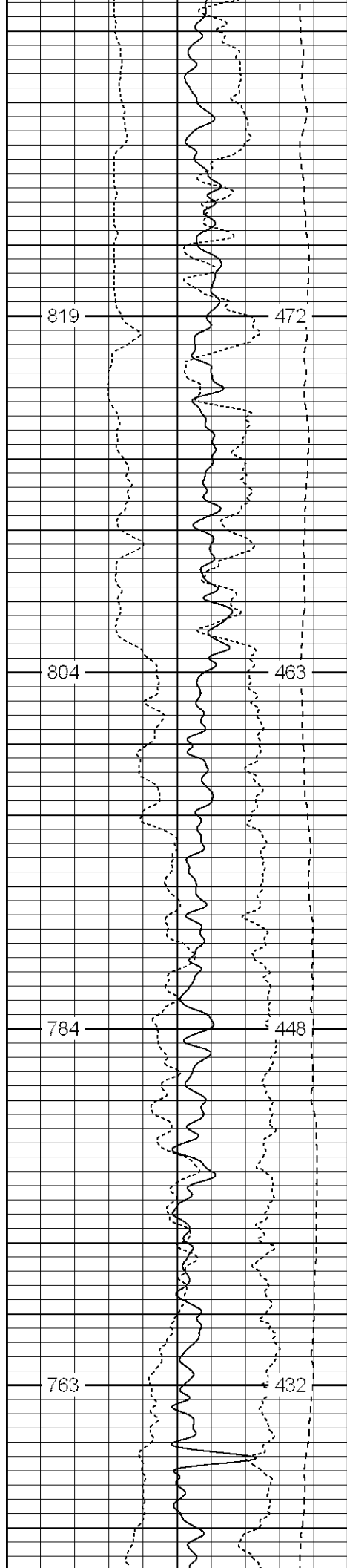
2	Deep Resistivity (Ohm-m)	200	30	Density Porosity (pu)	0
2	Medium Resistivity (Ohm-m)	200			
2	Shallow Resistivity (Ohm-m)	200			









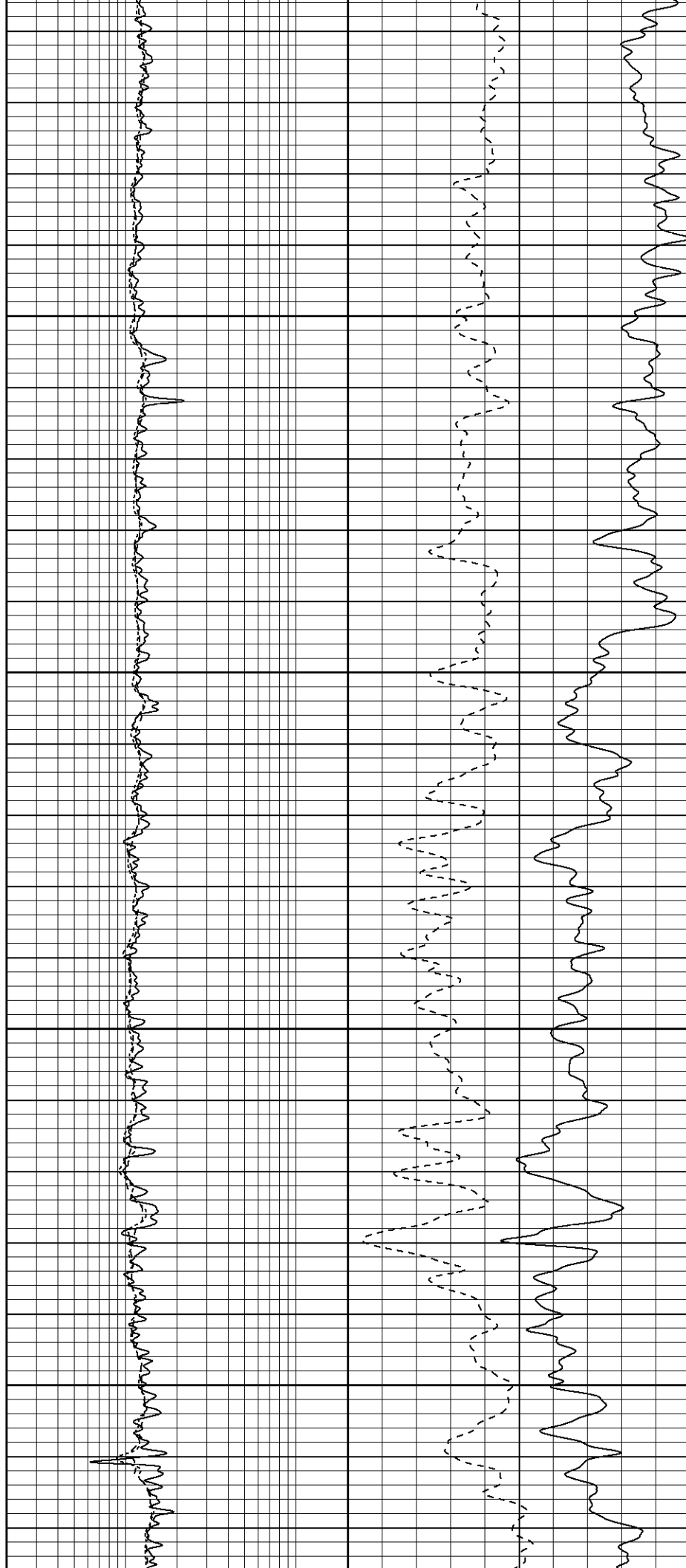


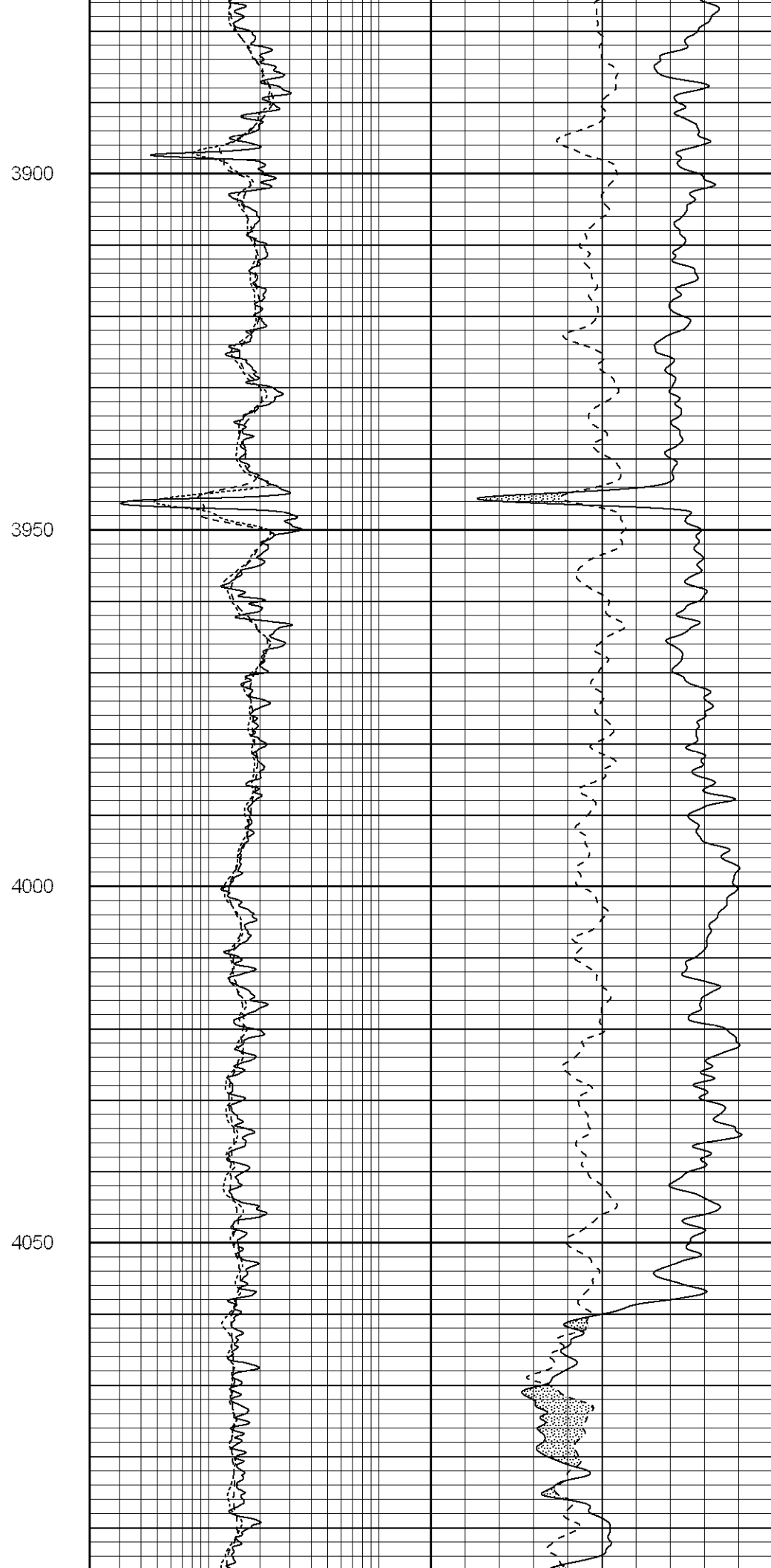
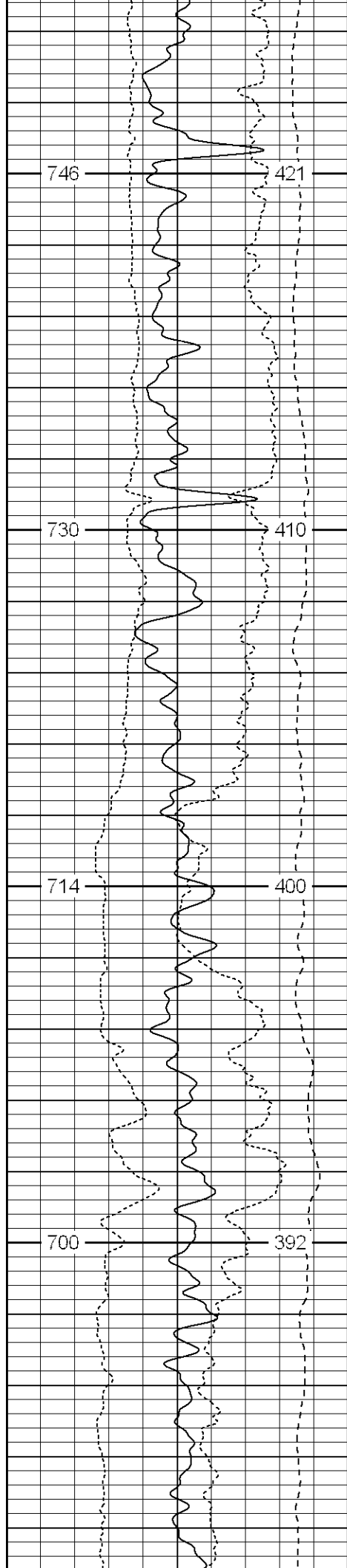
3700

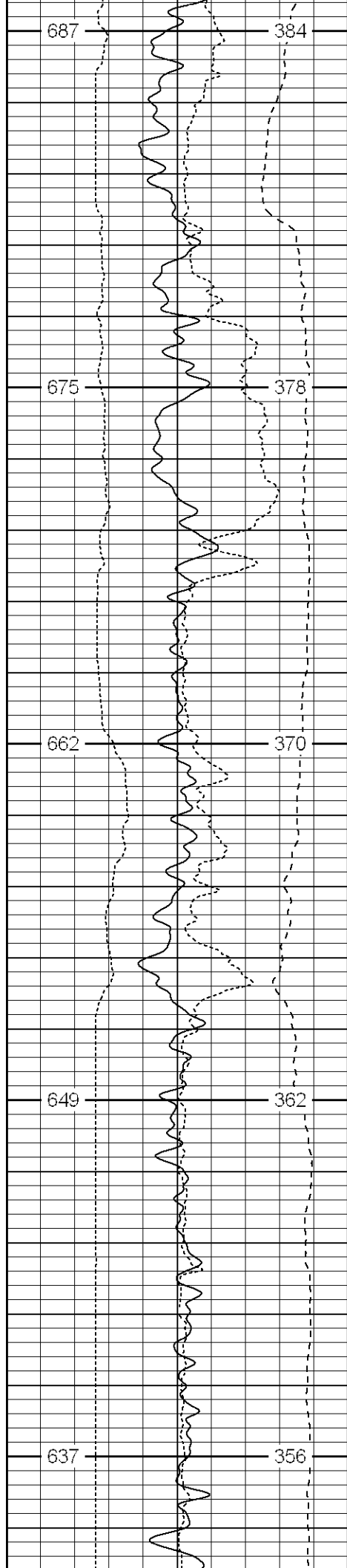
3750

3800

3850







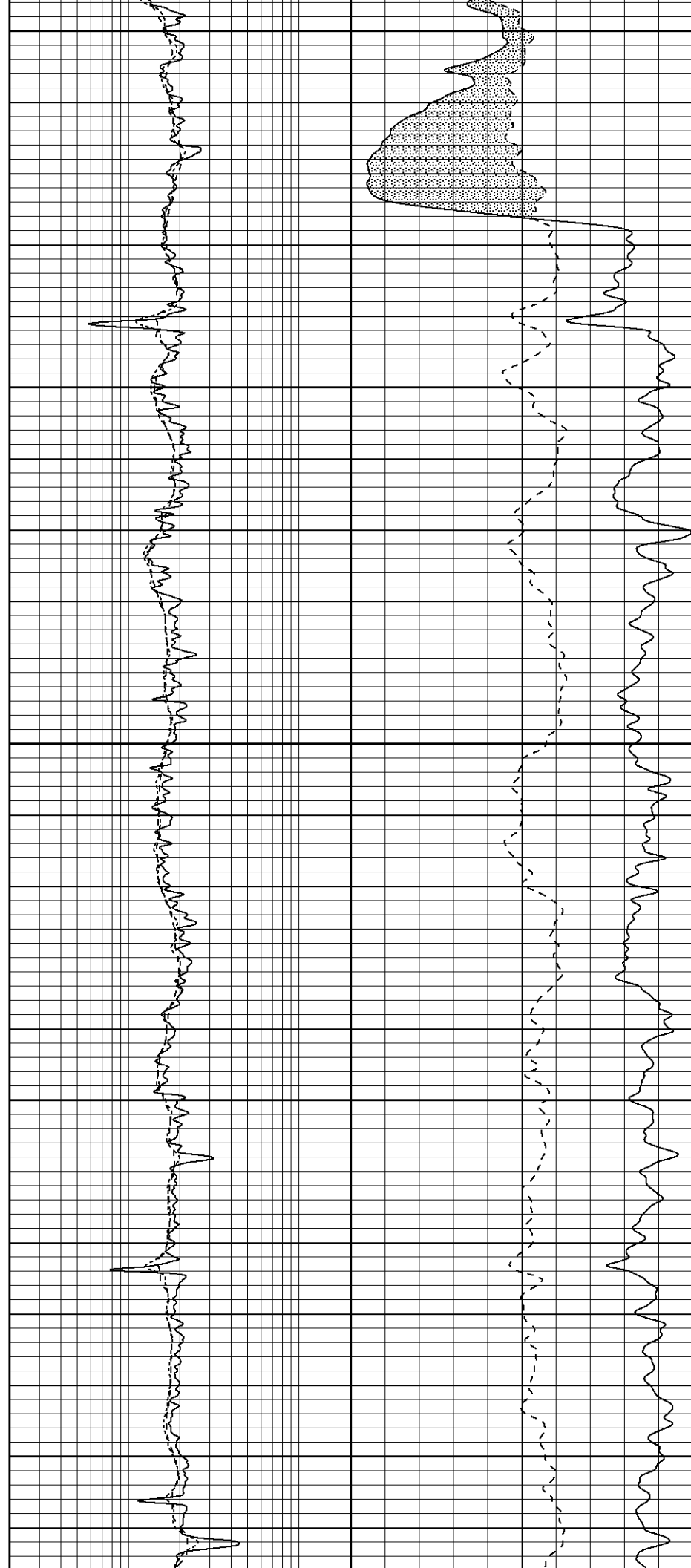
4100

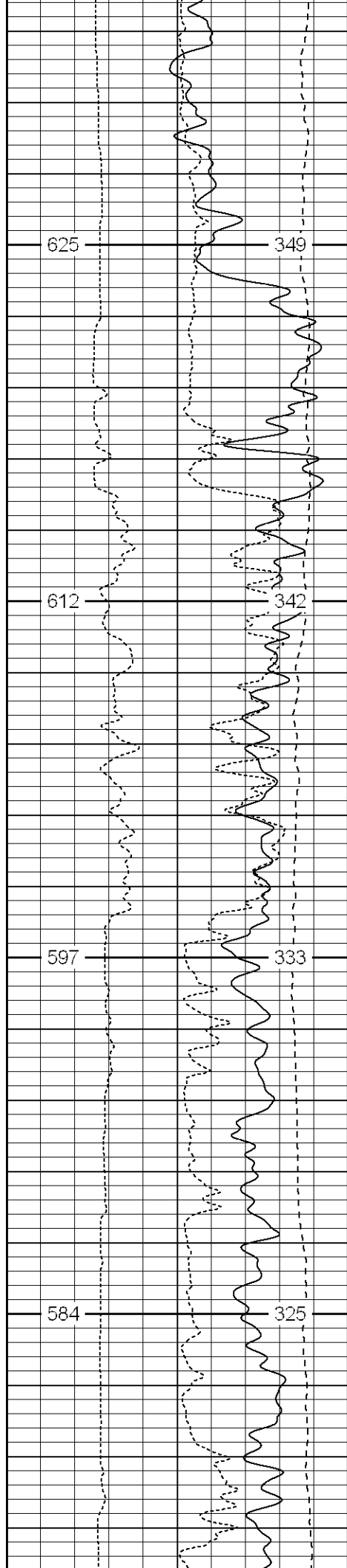
4150

4200

4250

4300



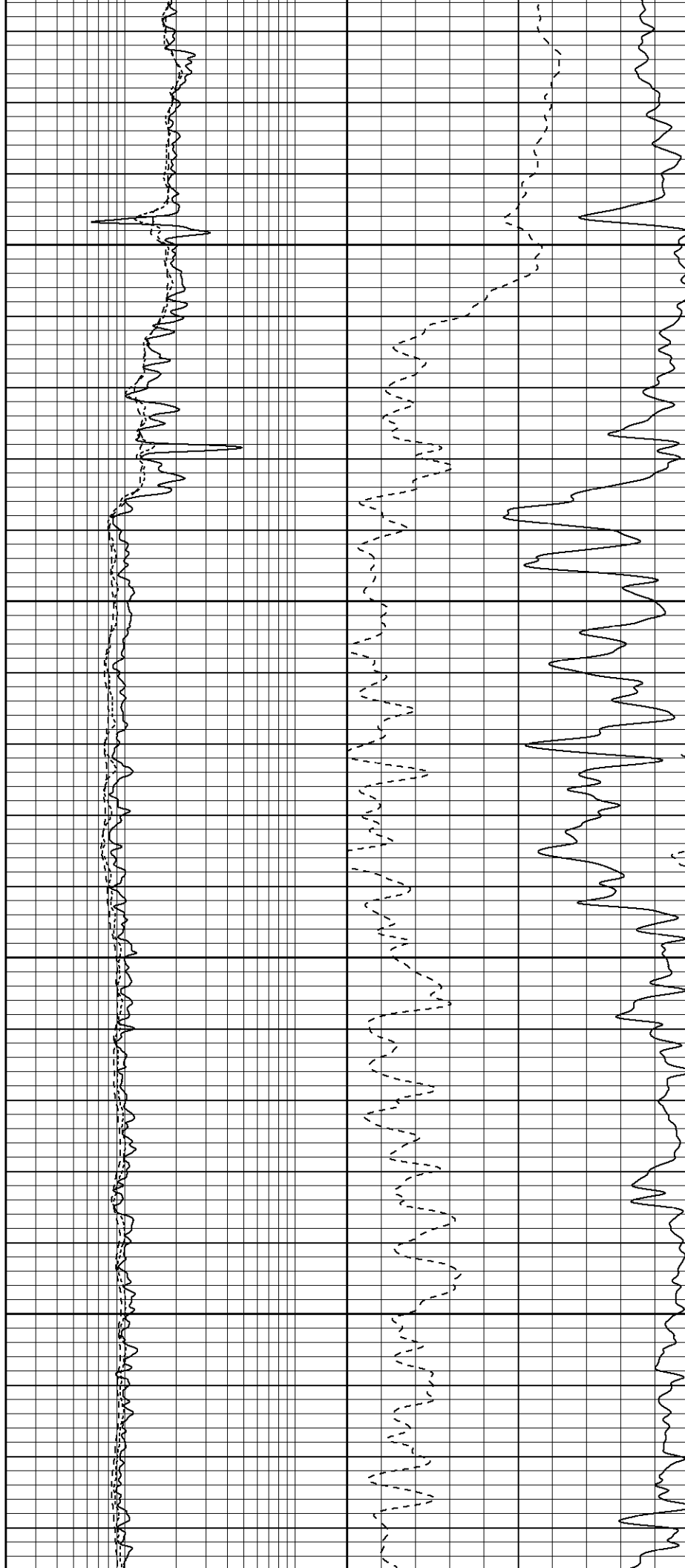


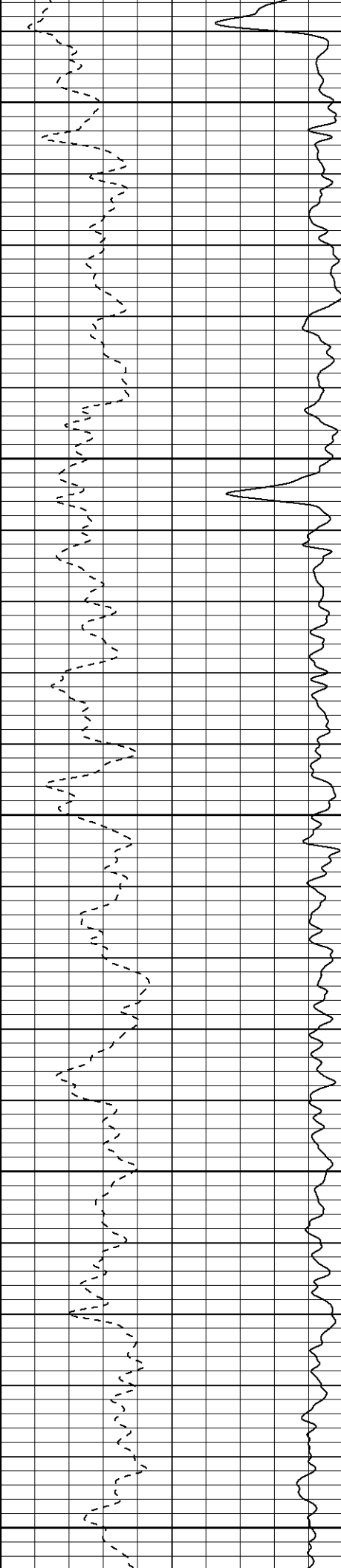
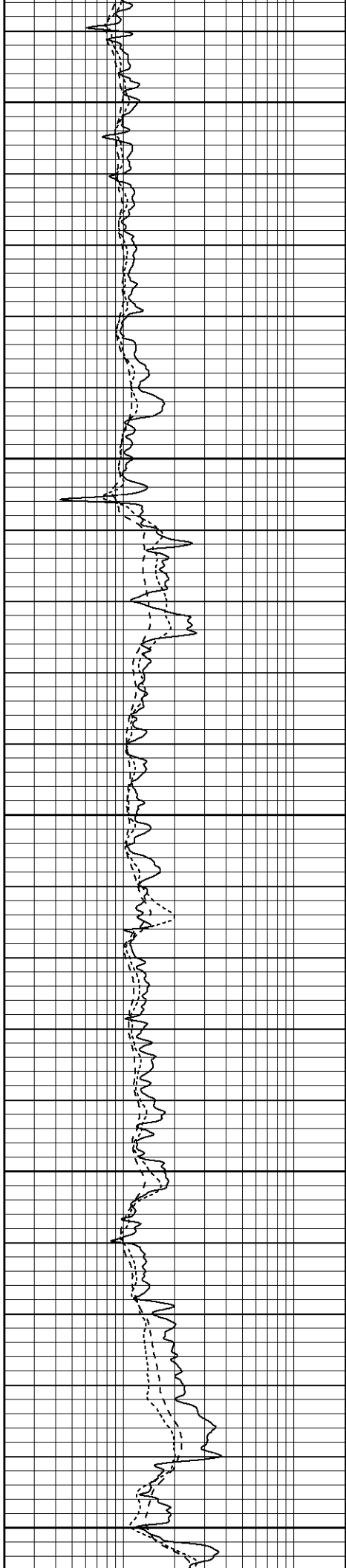
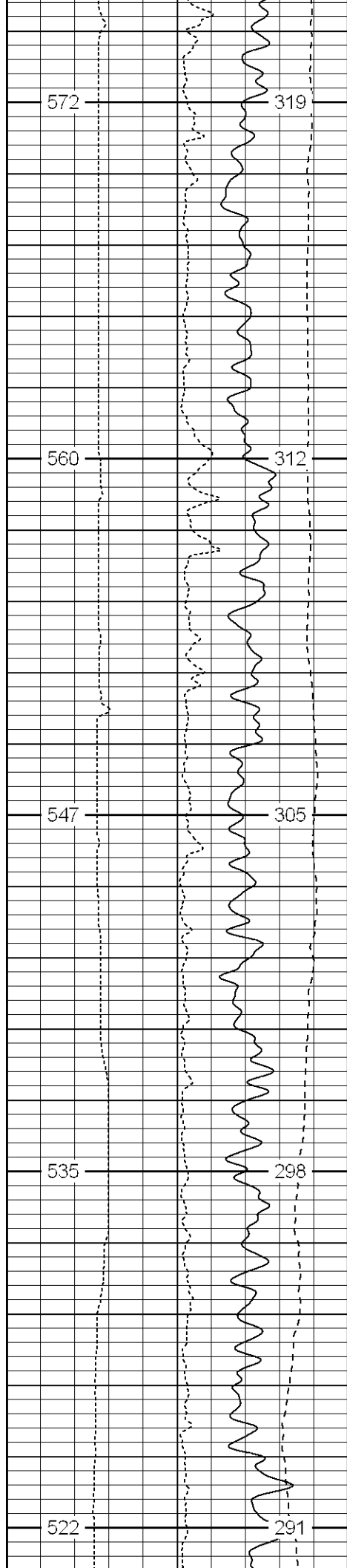
4350

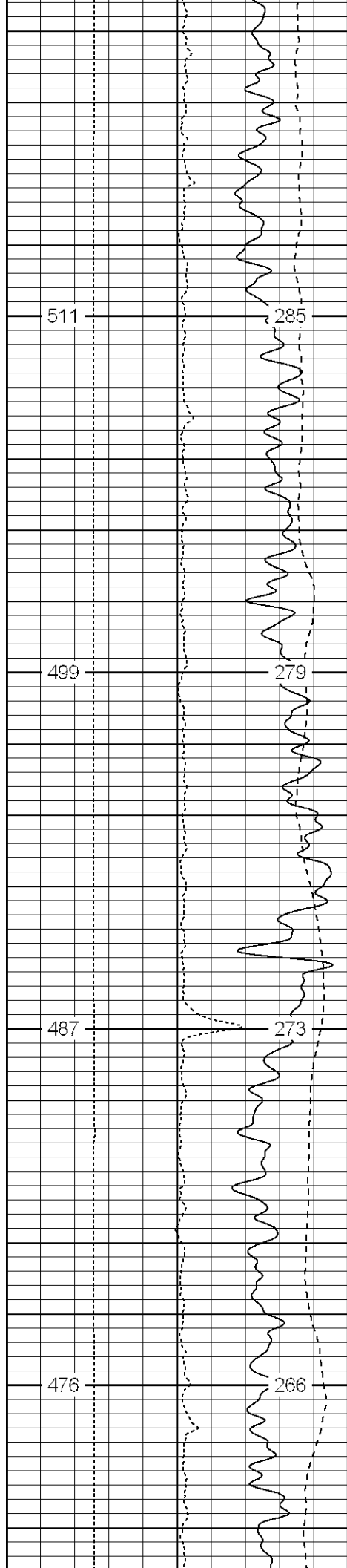
4400

4450

4500





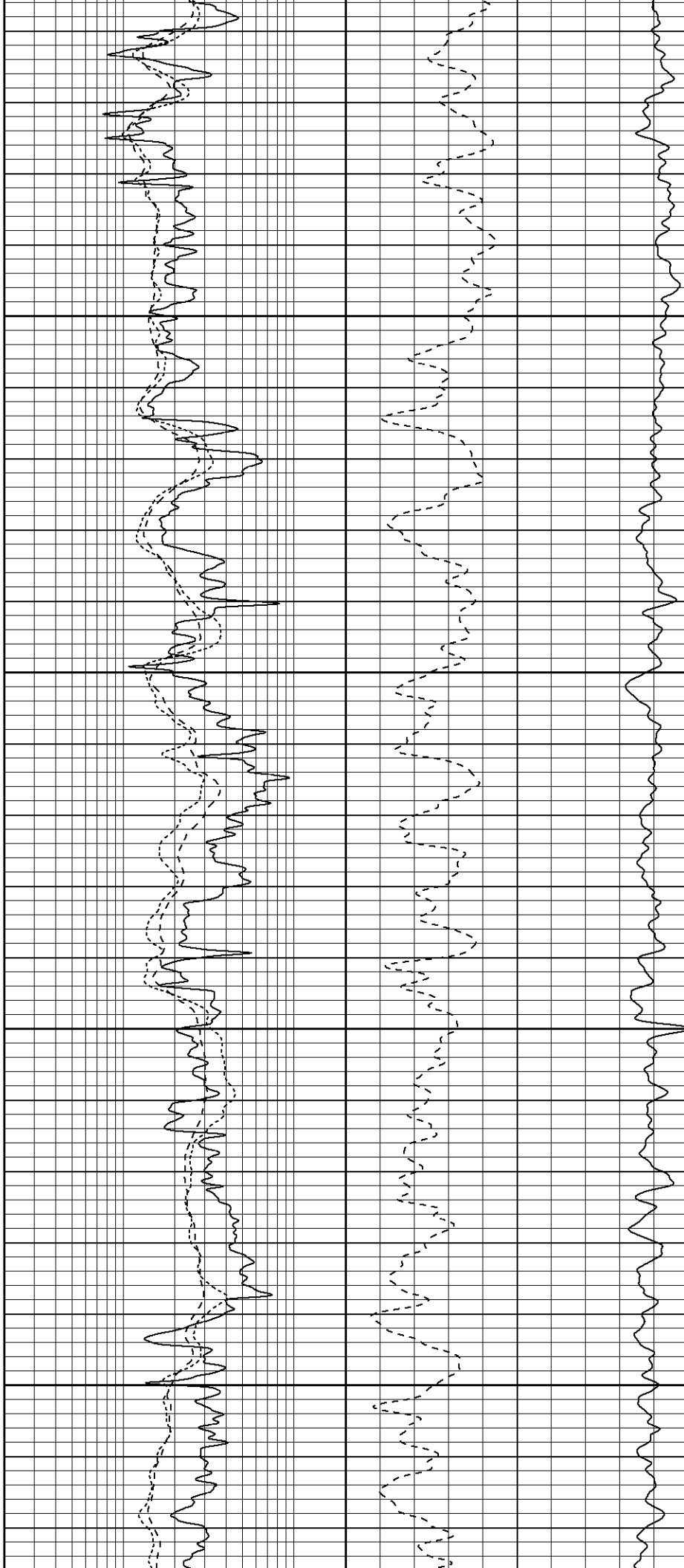


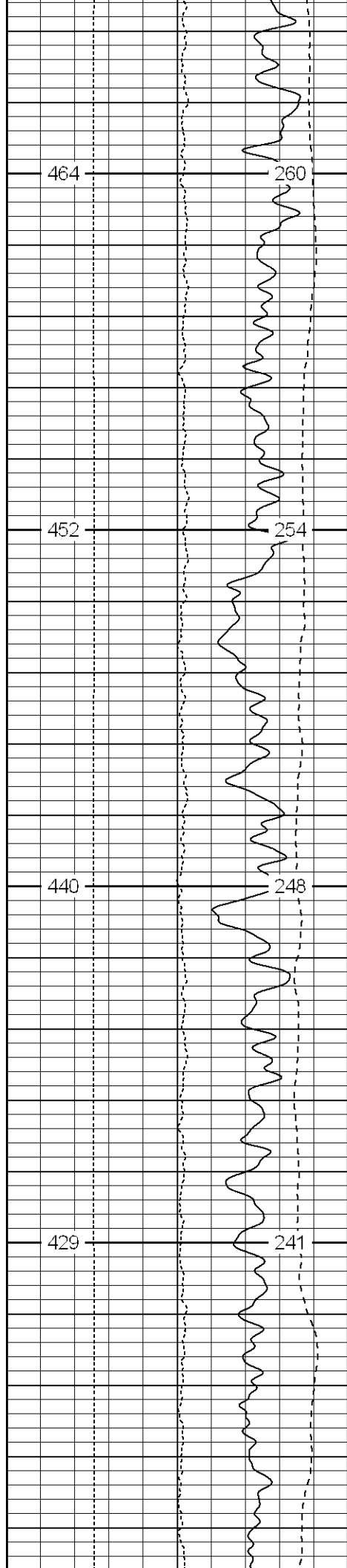
4800

4850

4900

4950



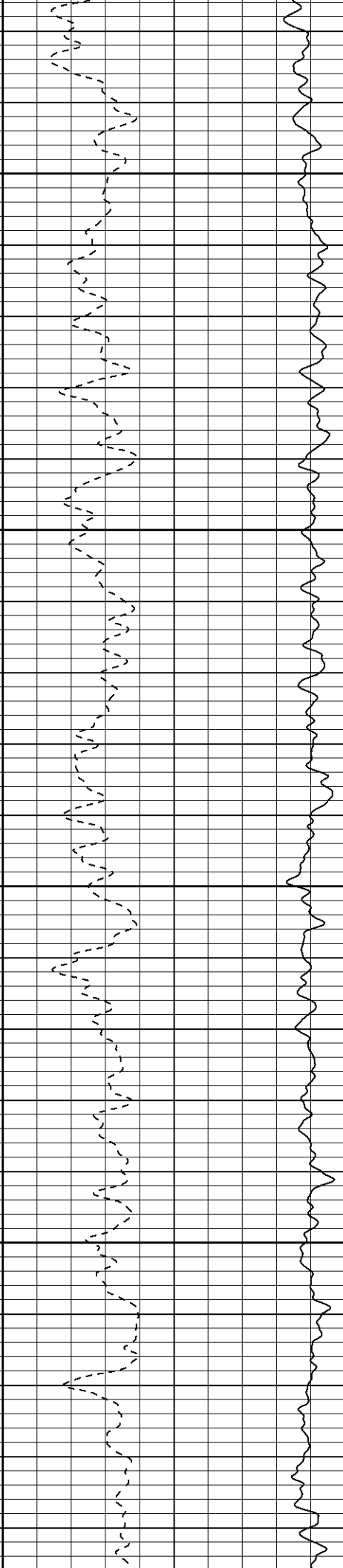
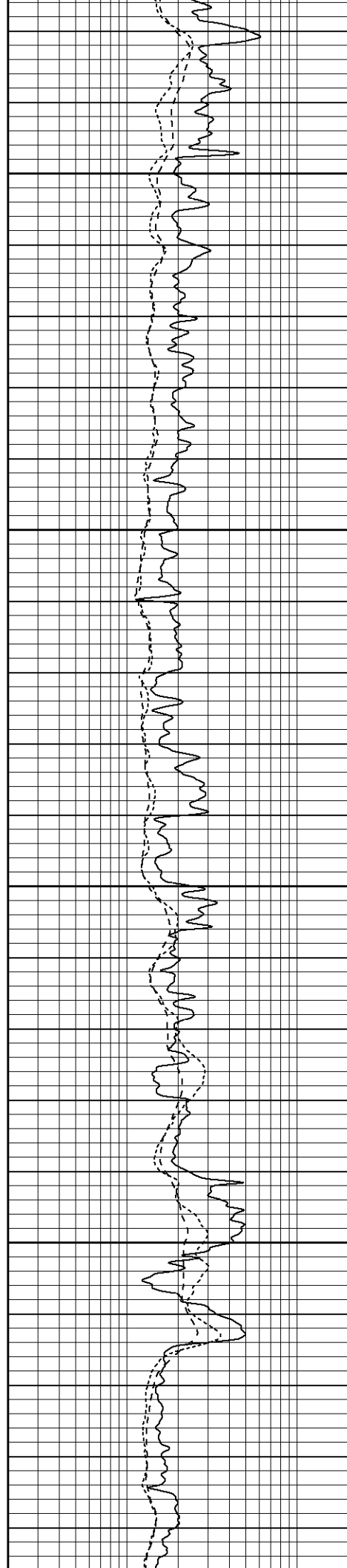


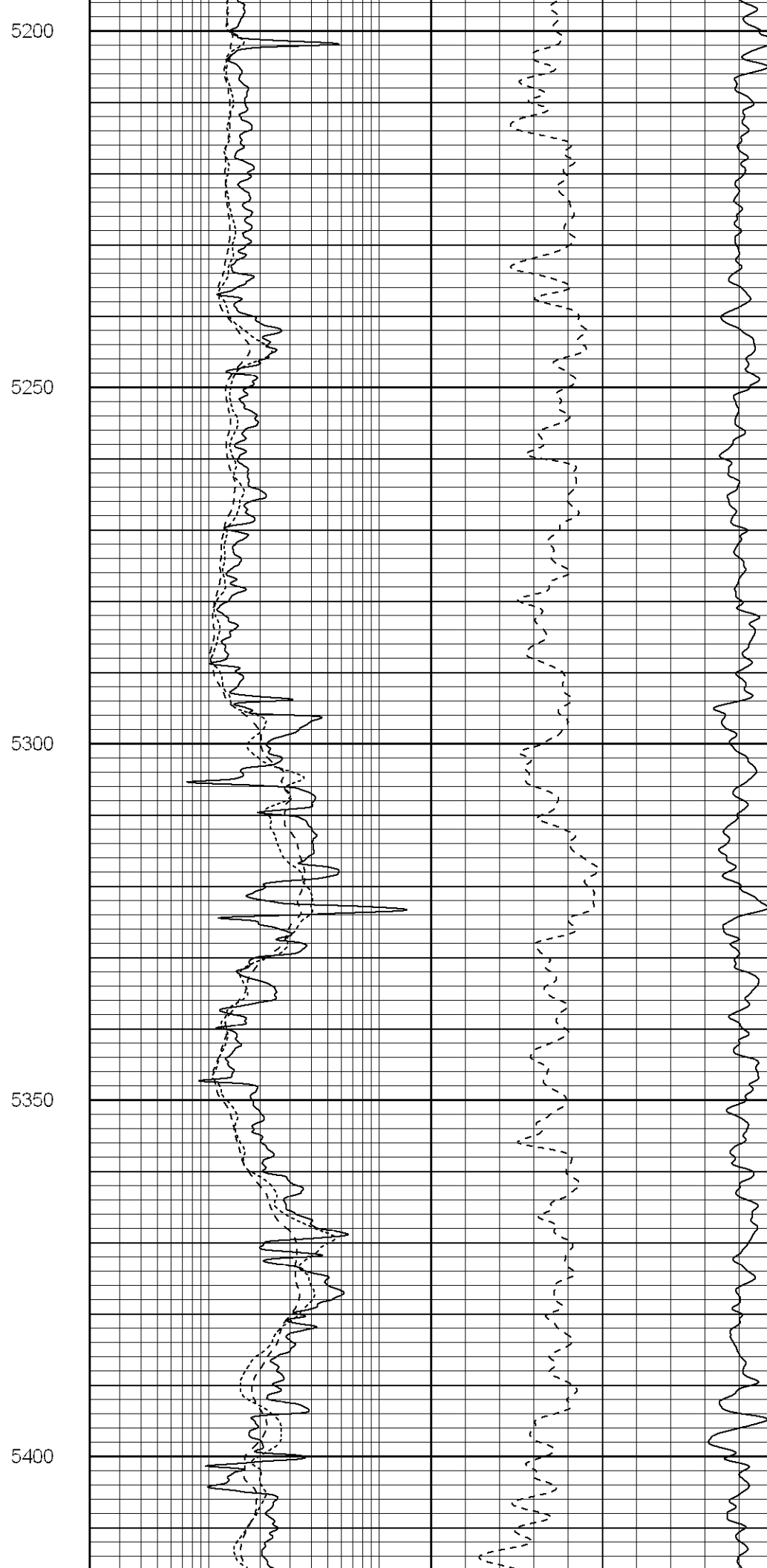
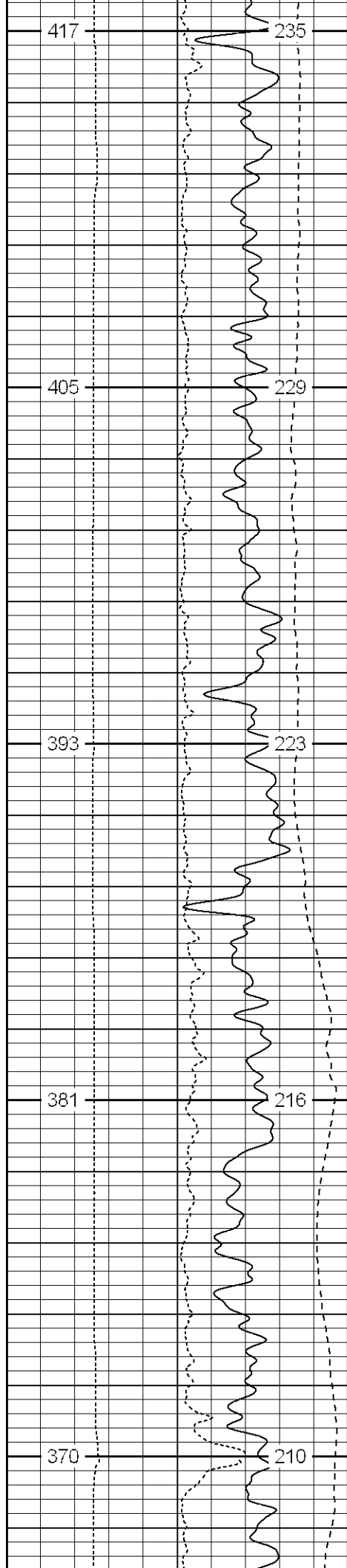
5000

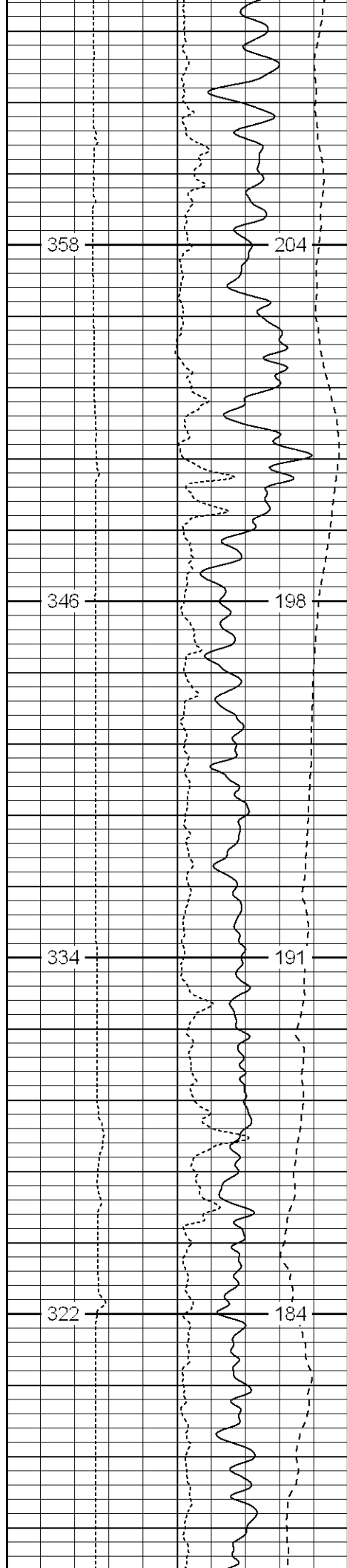
5050

5100

5150





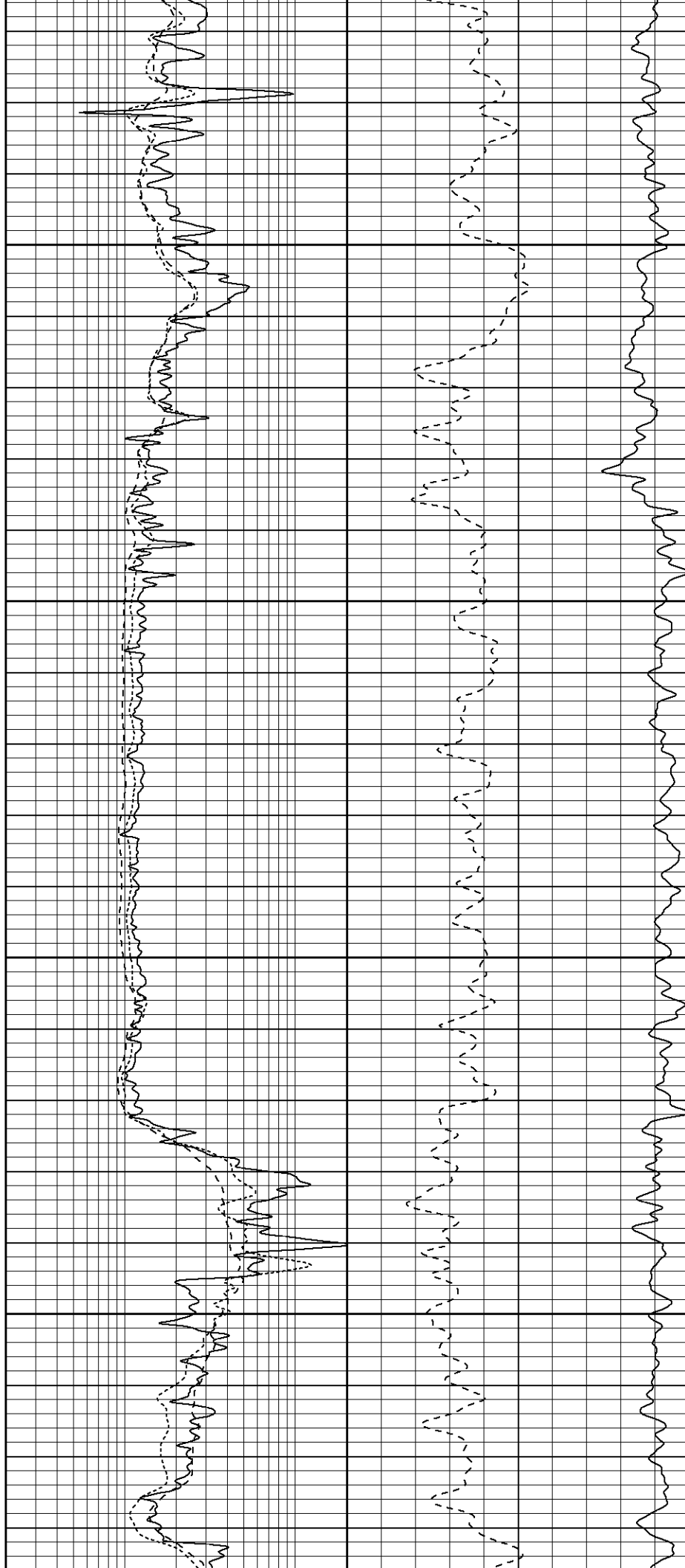


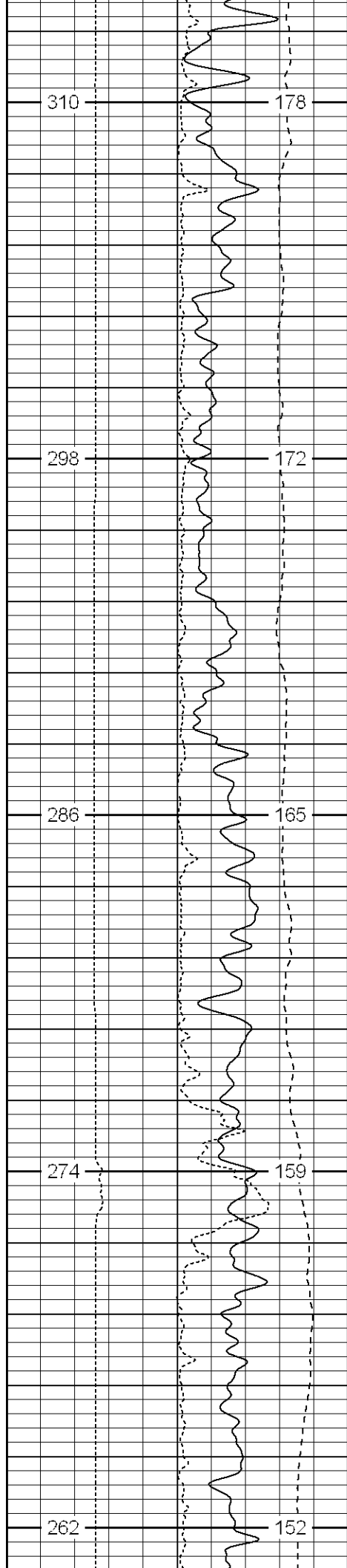
5450

5500

5550

5600





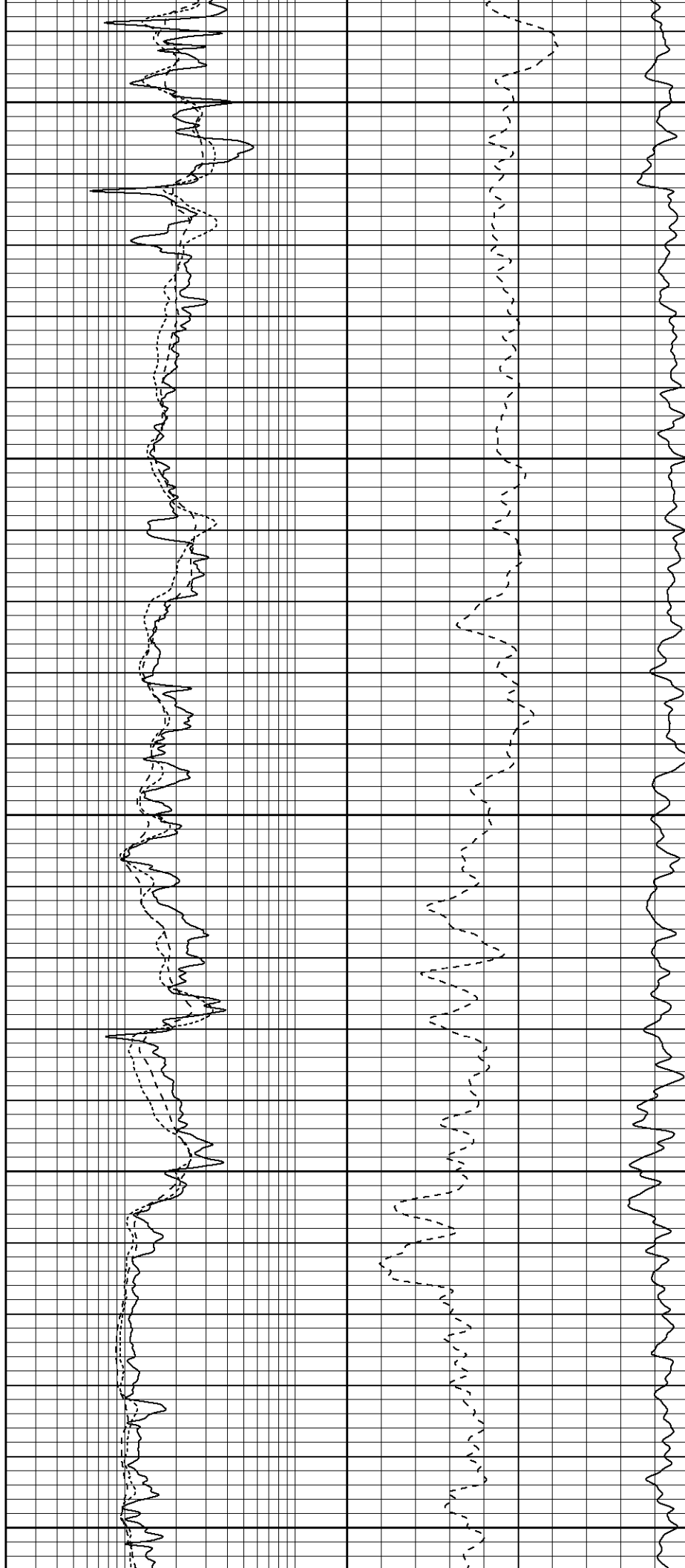
5650

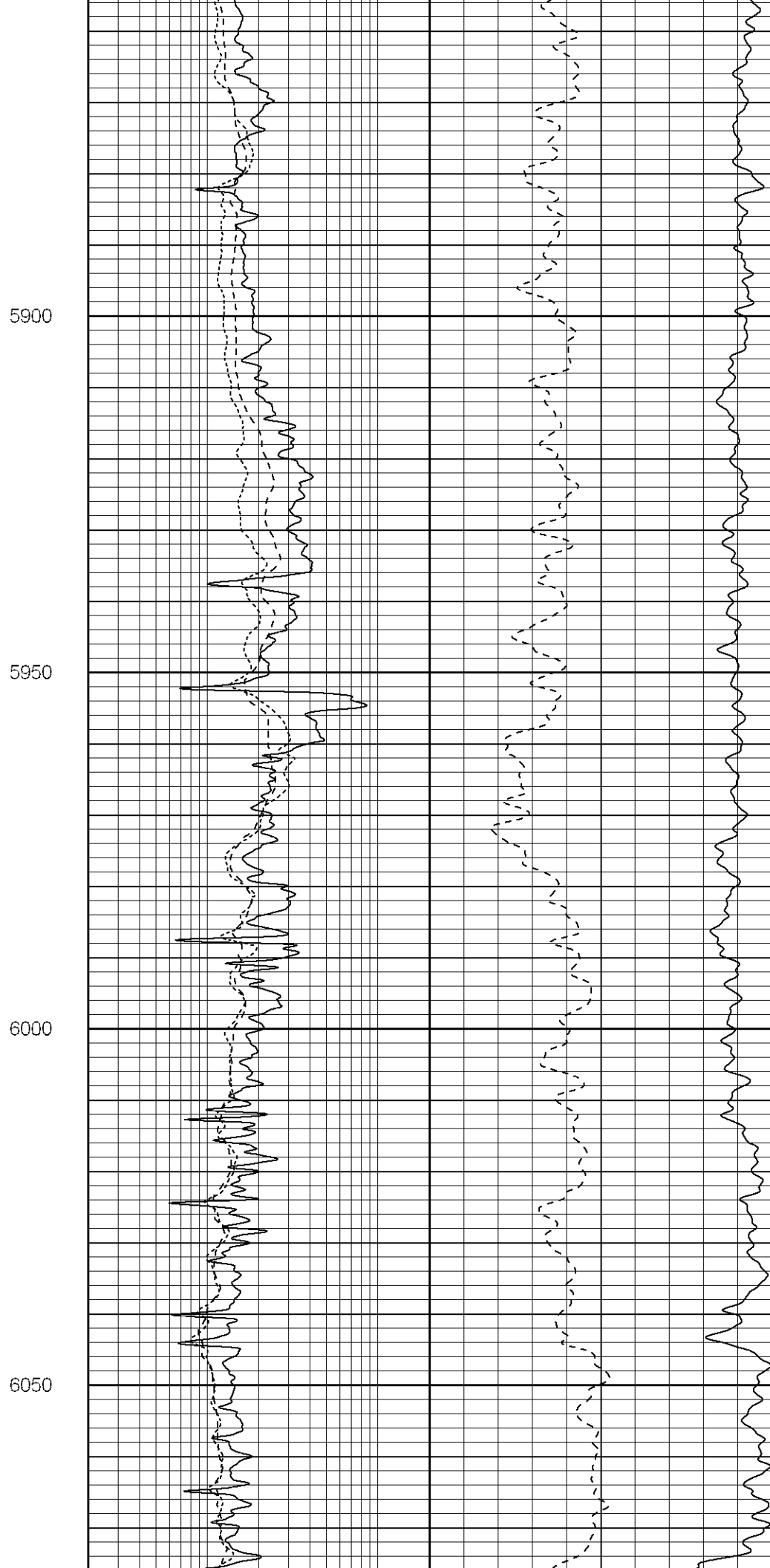
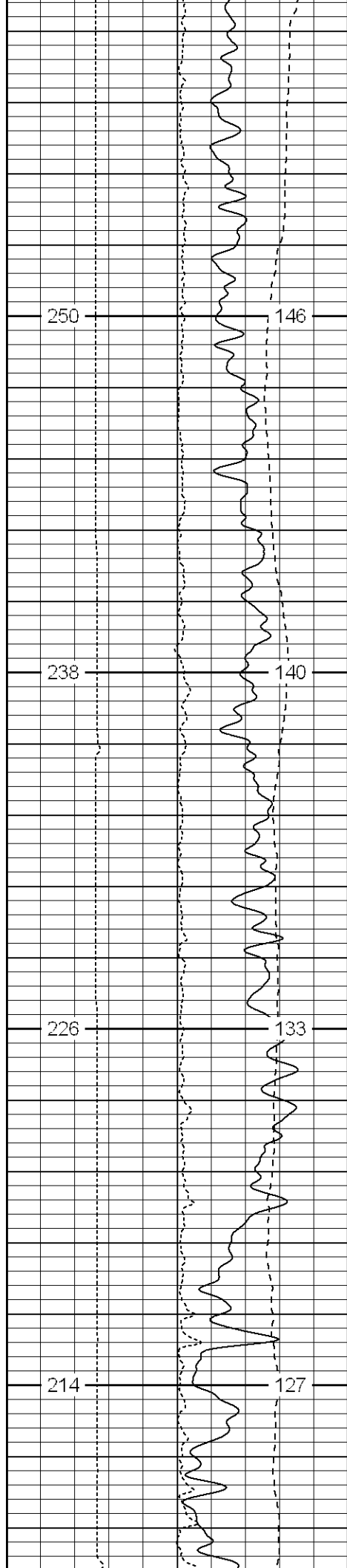
5700

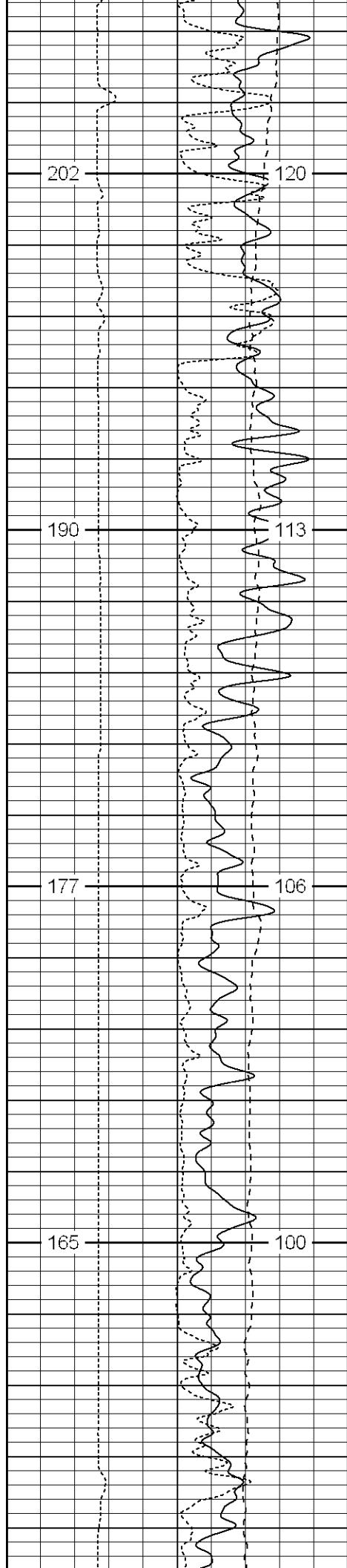
5750

5800

5850





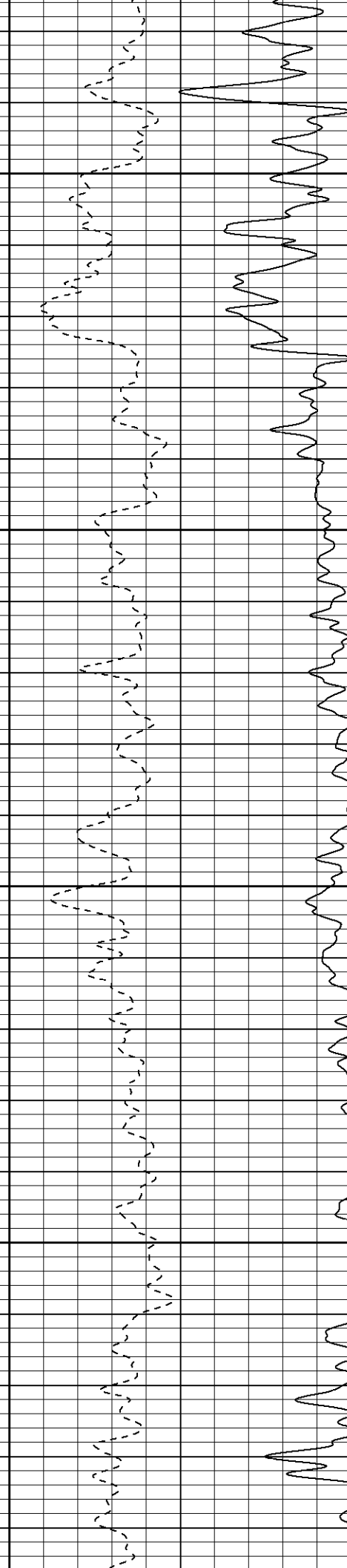
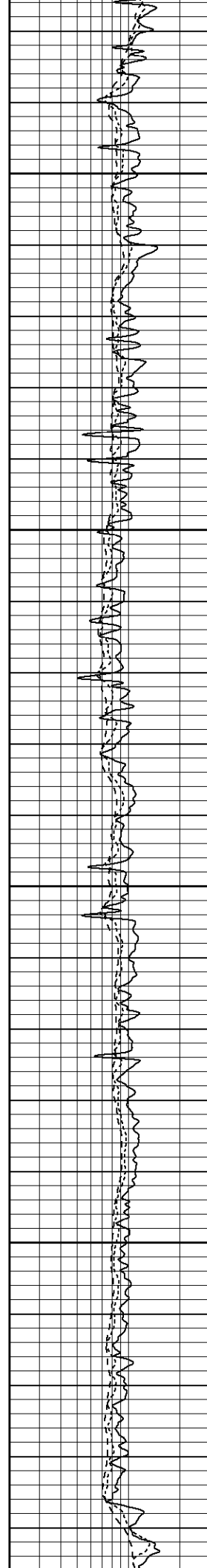


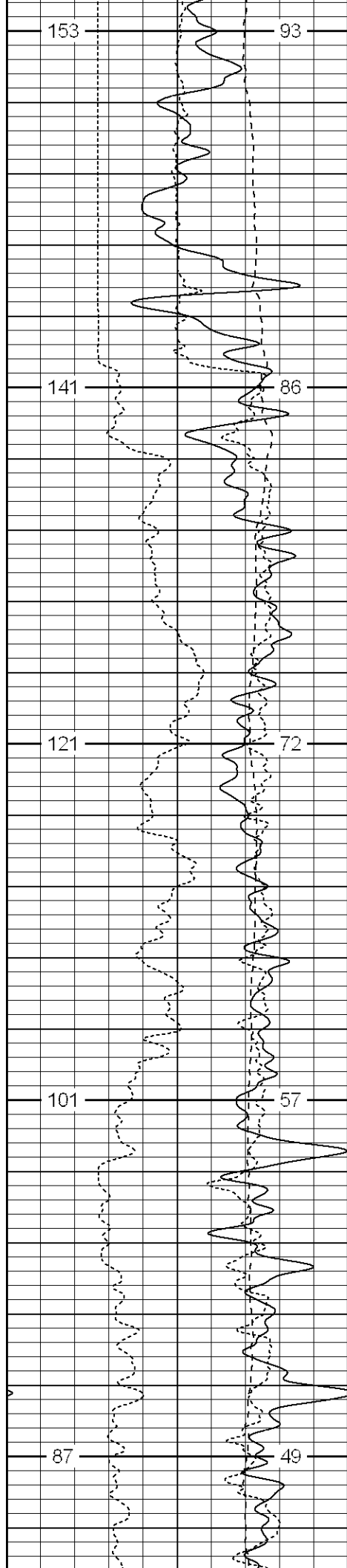
6100

6150

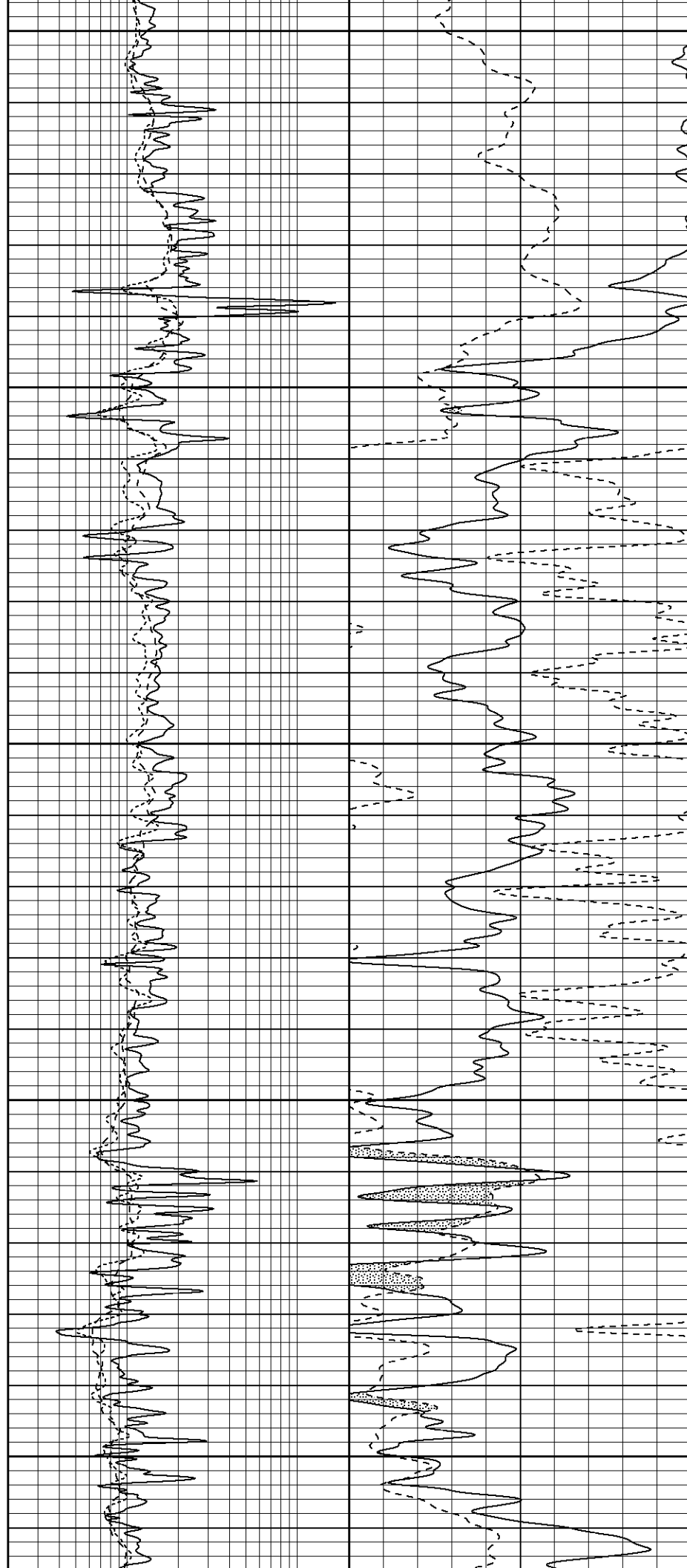
6200

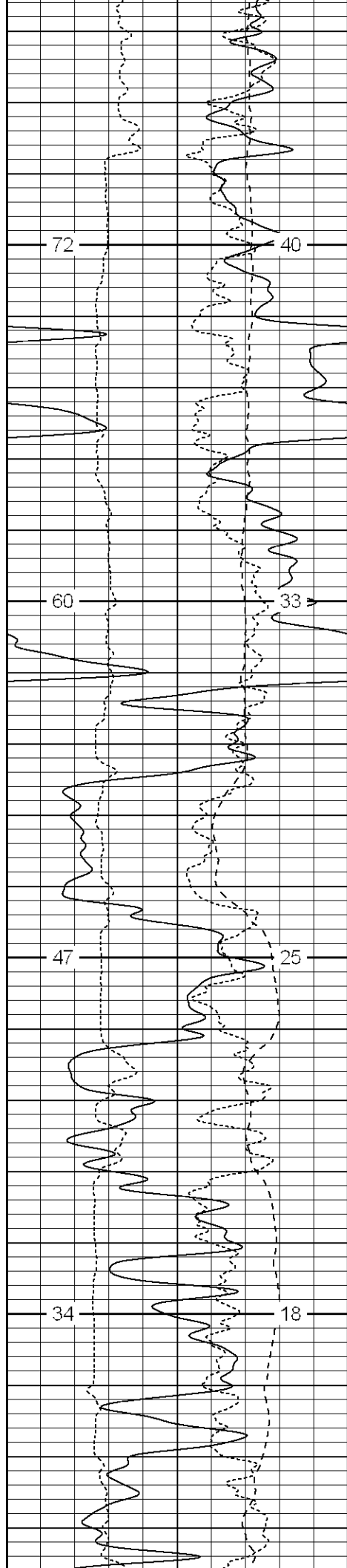
6250





6300
6350
6400
6450
6500





6550

6600

6650

6700

