

EXISTING PAD ELEVATION: 6154.1'
 FINAL ELEVATION: 6154.1'
 PROPOSED AREA OF DISTURBANCE: 4.6± ACRES

HYRUP 12H PAD	
SLOT	WELL
A1	OPEN
A2	12-33A
A3	12-33B
A4	OPEN
A5	OPEN
A6	EXISTING 12-74 WELL
A7	OPEN
A8	OPEN
A9	12-43B
A10	12-43A
A11	12-42D

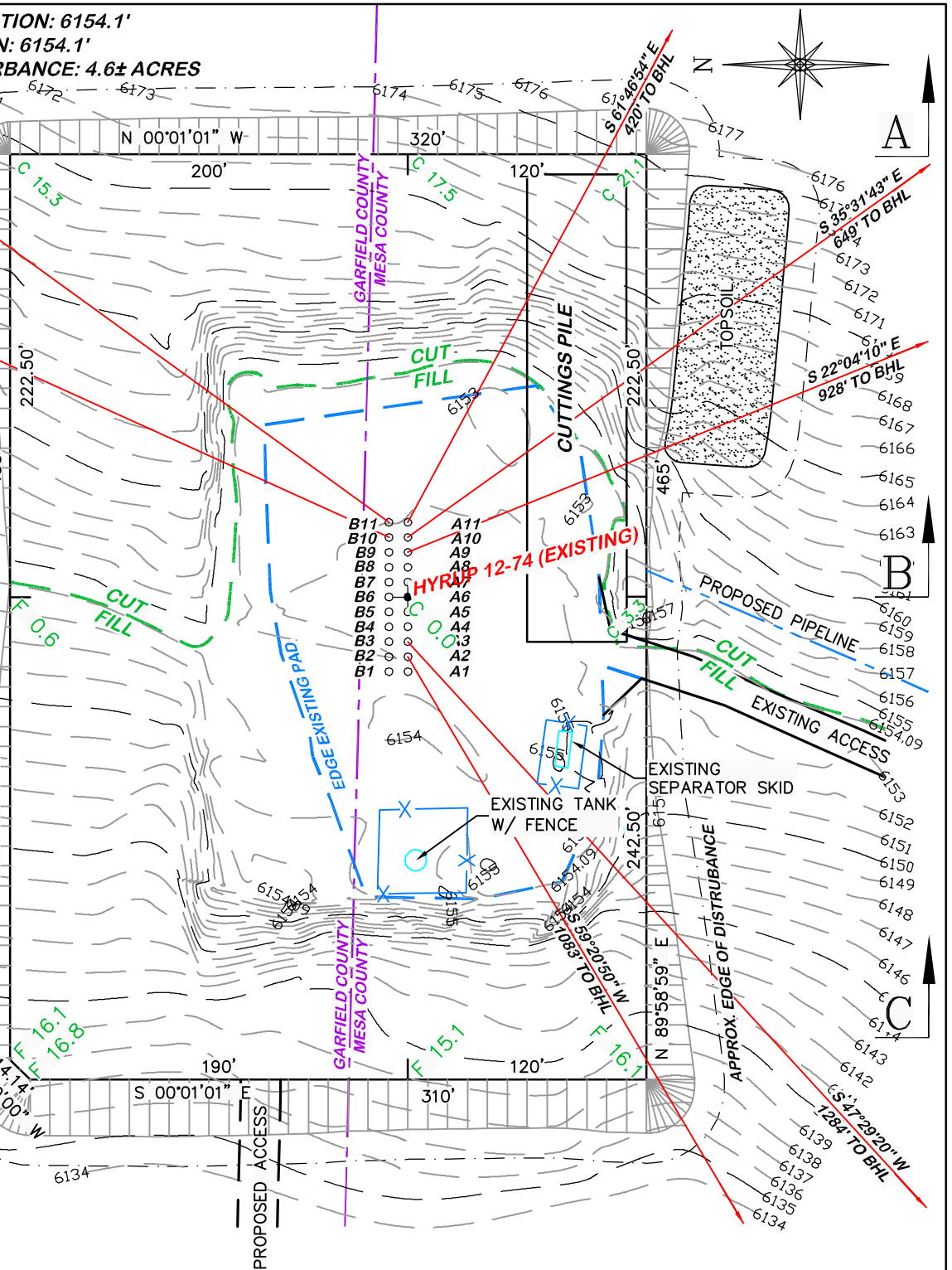
HYRUP 12H PAD	
SLOT	WELL
B1	OPEN
B2	OPEN
B3	OPEN
B4	OPEN
B5	OPEN
B6	OPEN
B7	OPEN
B8	OPEN
B9	OPEN
B10	12-42A
B11	12-42B

**BEFORE DIGGING
 CALL FOR
 UTILITY LINE LOCATION**

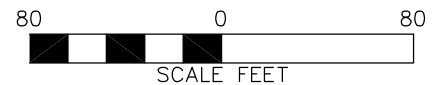
NOTE: THE EARTH QUANTITIES ON
 THIS DRAWING ARE ESTIMATED AND
 THE USE OF SAID QUANTITIES IS AT
 THE RESPONSIBILITY OF THE USER.

DRG RIFFIN & ASSOCIATES, INC.
 1414 ELK ST., ROCK SPRINGS, WY 82901
 (307) 362-5028

DRAWN: 6/15/11 - TCM	SCALE: 1" = 80'
REVISED: N/A	DRG JOB No. 11321
N/A	EXHIBIT 2



HYRUP 12H PAD



CONSTRUCTION LAYOUT DRAWING 1 OF 5
NOBLE ENERGY, INC.
HYRUP 12-33A, 12-33B, 12-42A, 12-42B,
12-42D, 12-3A, 12-43B,
SECTION 12, T. 8 S., R. 96 W., 6th P.M.
MESA COUNTY, COLORADO

ESTIMATED EARTHWORK				
ITEM	CUT	FILL	TOPSOIL	EXCESS
PAD	22,093 CY	20,000 CY	2,070 CY	23 CY
PIT (NONE)				
TOTALS	22,093 CY	20,000 CY	2,070 CY	23 CY

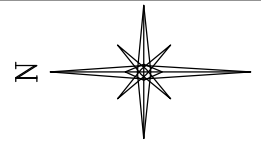
NOBLE ENERGY, INC.
HYRUP 12-33A, 12-33B, 12-42A, 12-42B,
12-42D, 12-3A, 12-43B,
SECTION 12, T. 8 S., R. 96 W., 6th P.M.
MESA COUNTY, COLORADO

EXISTING PAD ELEVATION: 6154.1'

FINAL ELEVATION: 6154.1'

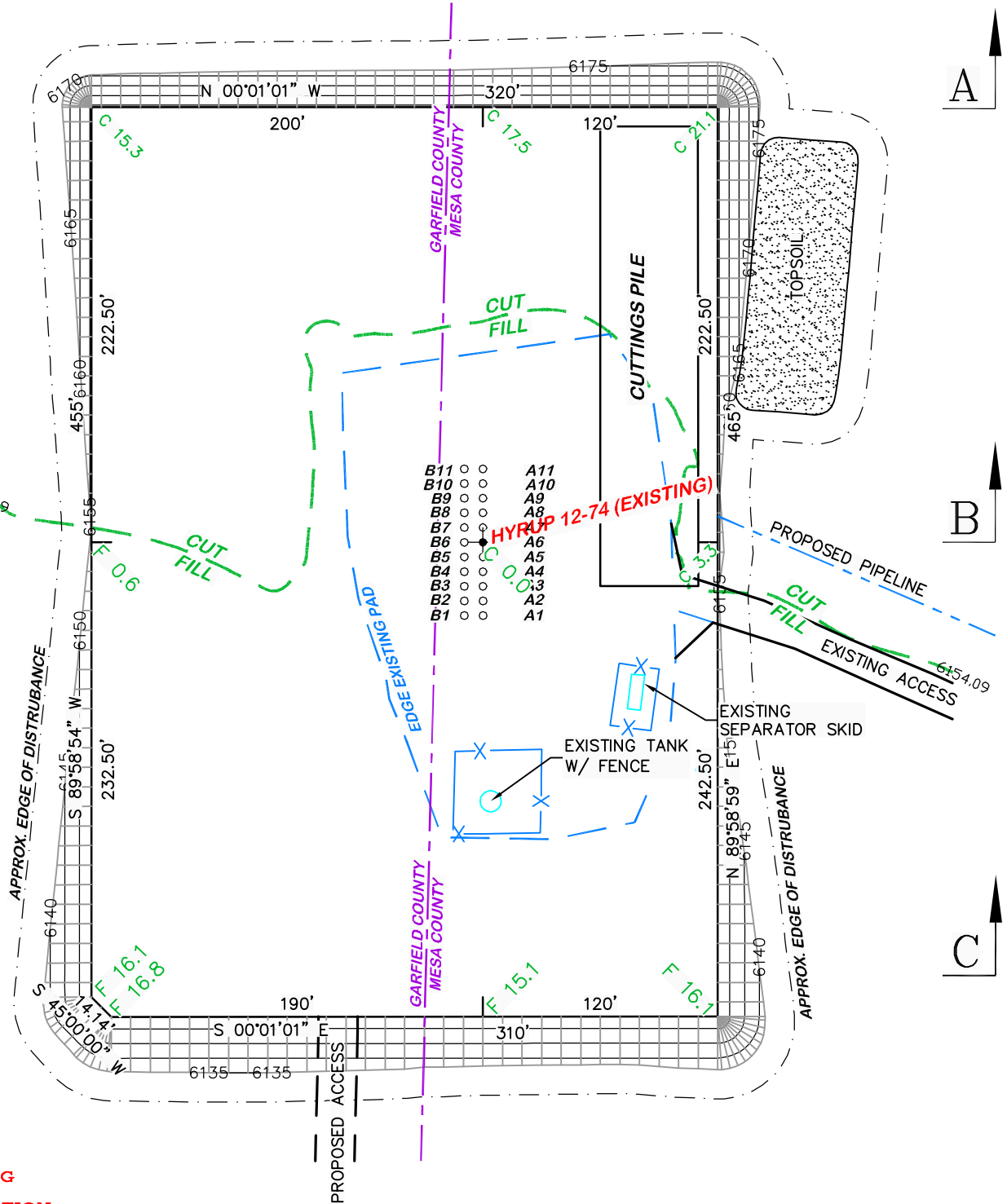
PROPOSED AREA OF DISTURBANCE: 4.6± ACRES

DESIGN CONTOURS



HYRUP 12H PAD	
SLOT	WELL
A1	OPEN
A2	12-33A
A3	12-33B
A4	OPEN
A5	OPEN
A6	EXISTING 12-74 WELL
A7	OPEN
A8	OPEN
A9	12-43B
A10	12-43A
A11	12-42D

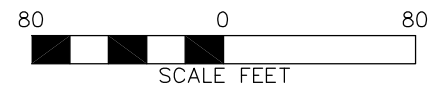
HYRUP 12H PAD	
SLOT	WELL
B1	OPEN
B2	OPEN
B3	OPEN
B4	OPEN
B5	OPEN
B6	OPEN
B7	OPEN
B8	OPEN
B9	OPEN
B10	12-42A
B11	12-42B



**BEFORE DIGGING
CALL FOR
UTILITY LINE LOCATION**

NOTE: THE EARTH QUANTITIES ON THIS DRAWING ARE ESTIMATED AND THE USE OF SAID QUANTITIES IS AT THE RESPONSIBILITY OF THE USER.

HYRUP 12H PAD



DRG RIFFIN & ASSOCIATES, INC.
(307) 362-5028 1414 ELK ST., ROCK SPRINGS, WY 82901

DRAWN: 6/15/11 - TCM

SCALE: 1" = 80'

REVISED: N/A

DRG JOB No. 11321

N/A

EXHIBIT 2B

CONSTRUCTION LAYOUT DRAWING 3 OF 5

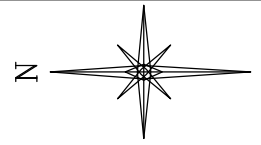
NOBLE ENERGY, INC.
HYRUP 12-33A, 12-33B, 12-42A, 12-42B,
12-42D, 12-3A, 12-43B,
SECTION 12, T. 8 S., R. 96 W., 6th P.M.
MESA COUNTY, COLORADO

EXISTING PAD ELEVATION: 6154.1'

FINAL ELEVATION: 6154.1'

PROPOSED AREA OF DISTURBANCE: 4.6± ACRES

RECLAMATION PLAN



A

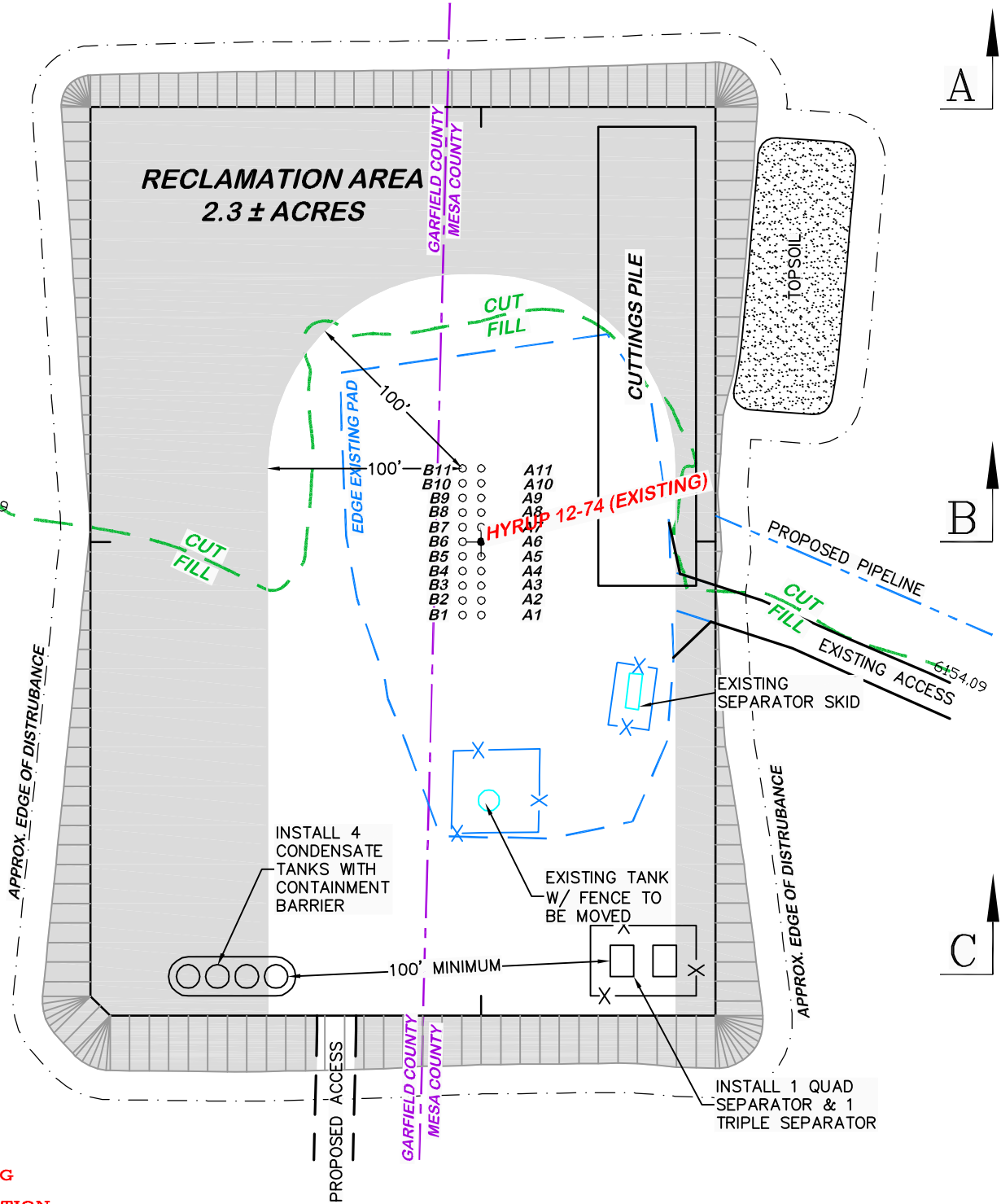
B

C

RECLAMATION AREA
2.3 ± ACRES

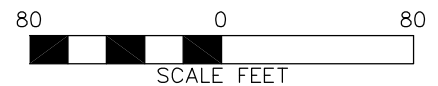
HYRUP 12H PAD	
SLOT	WELL
A1	OPEN
A2	12-33A
A3	12-33B
A4	OPEN
A5	OPEN
A6	EXISTING 12-74 WELL
A7	OPEN
A8	OPEN
A9	12-43B
A10	12-43A
A11	12-42D

HYRUP 12H PAD	
SLOT	WELL
B1	OPEN
B2	OPEN
B3	OPEN
B4	OPEN
B5	OPEN
B6	OPEN
B7	OPEN
B8	OPEN
B9	OPEN
B10	12-42A
B11	12-42B



**BEFORE DIGGING
CALL FOR
UTILITY LINE LOCATION**

NOTE: THE EARTH QUANTITIES ON
THIS DRAWING ARE ESTIMATED AND
THE USE OF SAID QUANTITIES IS AT
THE RESPONSIBILITY OF THE USER.



HYRUP 12H PAD



DRIFFIN & ASSOCIATES, INC.
1414 ELK ST., ROCK SPRINGS, WY 82901

(307) 362-5028

DRAWN: 6/15/11 - TCM

SCALE: 1" = 80'

REVISED: N/A

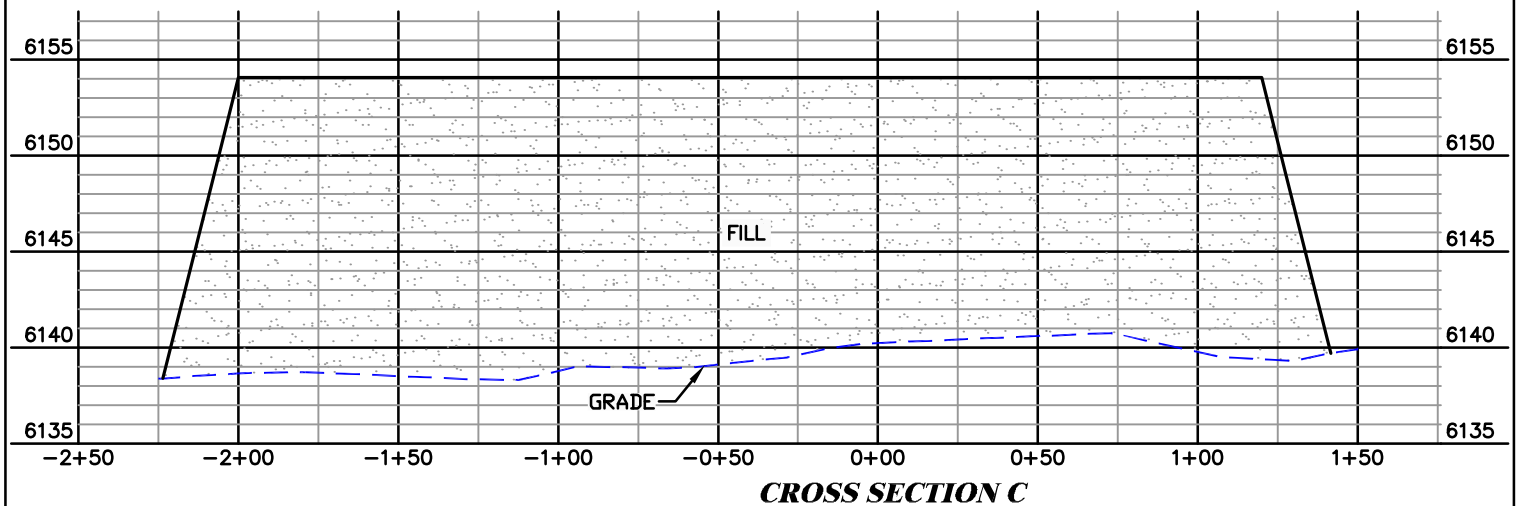
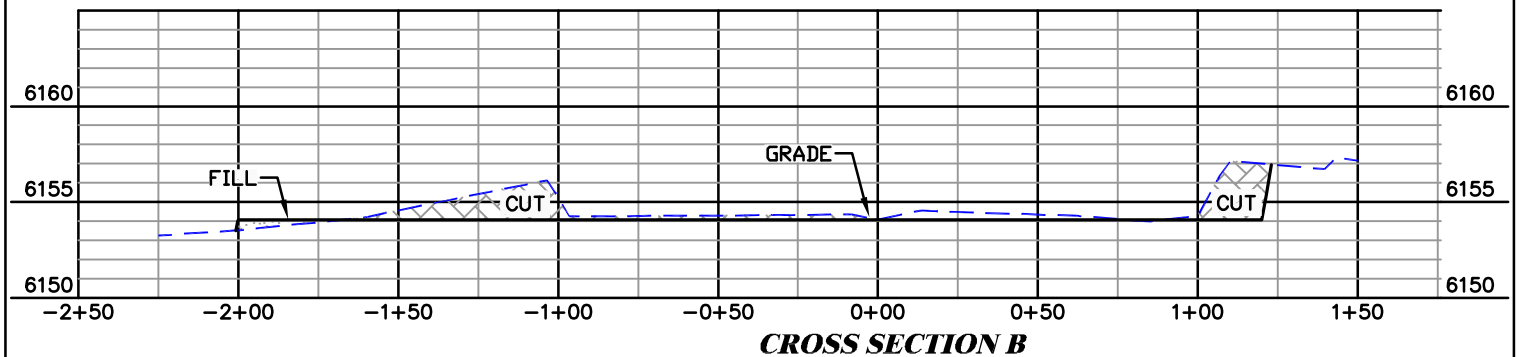
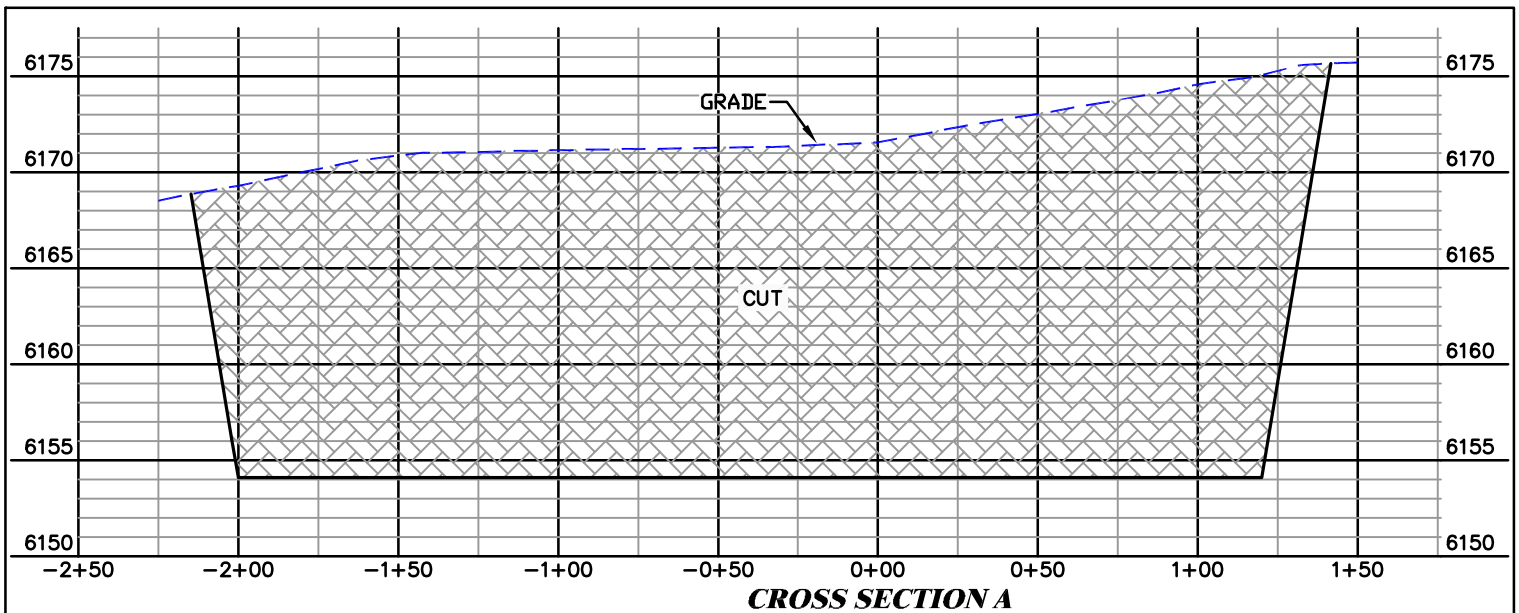
DRG JOB No. 11321

N/A

EXHIBIT 2C

CONSTRUCTION LAYOUT DRAWING 4 OF 5

NOBLE ENERGY, INC.
HYRUP 12-33A, 12-33B, 12-42A, 12-42B,
12-42D, 12-3A, 12-43B,
SECTION 12, T. 8 S., R. 96 W., 6th P.M.
MESA COUNTY, COLORADO



FINISHED ELEVATION = 6154.1'

HYRUP 12H PAD

CONSTRUCTION LAYOUT DRAWING 5 OF 5

DRG RIFFIN & ASSOCIATES, INC.
 (307) 362-5028 1414 ELK ST., ROCK SPRINGS, WY 82901

NOBLE ENERGY, INC.
HYRUP 12-33A, 12-33B, 12-42A, 12-42B,
12-42D, 12-3A, 12-43B,
SECTION 12, T. 8 S., R. 96 W., 6th P.M.
MESA COUNTY, COLORADO

DRAWN: 6/15/11 - TCM

HORZ. 1" = 60' VERT. 1" = 10'

REVISED: N/A

DRG JOB No. 11321

EXHIBIT 3