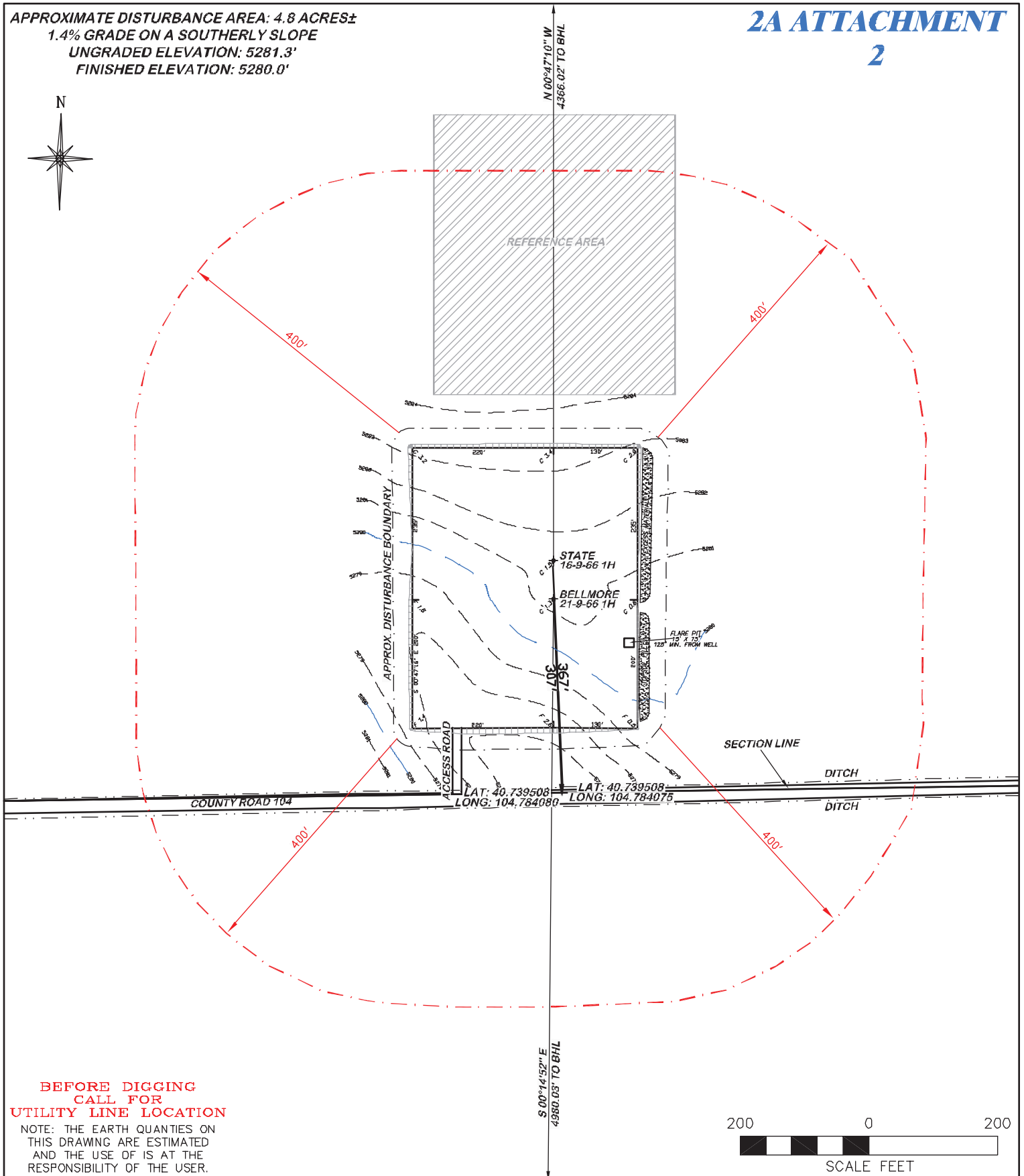


APPROXIMATE DISTURBANCE AREA: 4.8 ACRES±
 1.4% GRADE ON A SOUTHERLY SLOPE
 UNGRADED ELEVATION: 5281.3'
 FINISHED ELEVATION: 5280.0'

2A ATTACHMENT

2



**BEFORE DIGGING
 CALL FOR
 UTILITY LINE LOCATION**

NOTE: THE EARTH QUANTITIES ON
 THIS DRAWING ARE ESTIMATED
 AND THE USE OF IS AT THE
 RESPONSIBILITY OF THE USER.



RIFFIN & ASSOCIATES, INC.
 1414 ELK ST., ROCK SPRINGS, WY 82901

(307) 362-5028

DRAWN: 4/19/11 - MMM

SCALE: 1" = 200'

REVISED: 6/6/11 - MMM

DRG JOB No. 18552

ADDED DISTANCE TO CO. RD.

EXHIBIT 2C

LOCATION DRAWING

**CHESAPEAKE ENERGY, LLC.
 STATE 16-9-66 1H & BELLMORE 21-9-66 1H
 SECTION 16, T9N, R66W**

**UNGRADED ELEVATION: 5281.3'
 FINISHED ELEVATION: 5280.0'**