

R. 66 W.

S 88°36'32" W 5268.96'

BELLMORE

21-9-66 1H

UNGRADED ELEVATION:

5281.3'

BASIS OF ELEVATION: USGS SPOT
ELEVATION LOCATED AT THE SE
CORNER SECTION 16, T9N, R66W,
ELEVATION: 5254'



SCALE 1" = 1000'

T. 9 N.

LATITUDE (NAD 83)

NORTH 40.740351 DEG.

LONGITUDE (NAD 83)

WEST 104.784118 DEG.

LATITUDE (NAD 27)

NORTH 40.740370 DEG.

LONGITUDE (NAD 27)

WEST 104.783593 DEG.

NORTHING

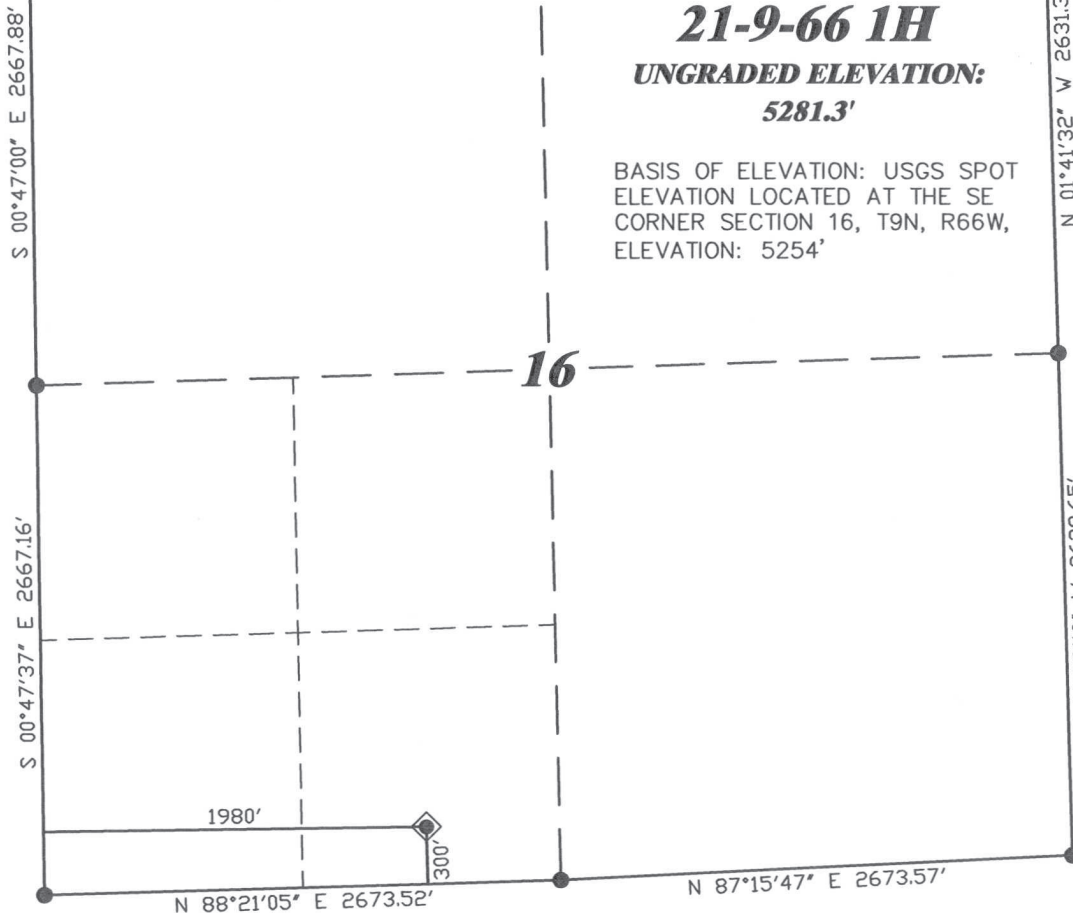
513354.33

EASTING

2198527.97

BASIS OF BEARING/DATUM

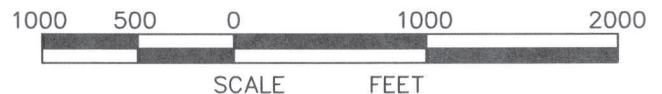
SPCS CO NORTH NAD 27
BASED ON DRG CONTROL
POINT "16-9-66"



NOTES

PRAIRIE LANDS
EXISTING COUNTY ROAD WITHIN
400' RADIUS OF WELL SITE.

GPS OPERATOR PAUL ORME
OBSERVED A PDOP OF 2.2.
ALL GPS OBSERVATIONS ARE IN
COMPLIANCE WITH COGCC RULE No.215.

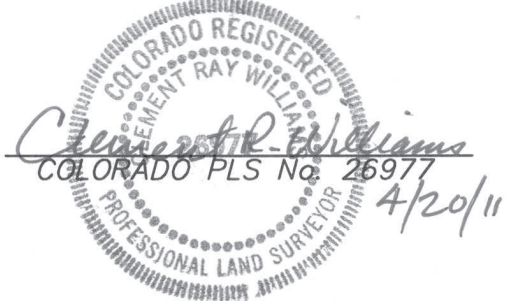


SURVEYOR'S STATEMENT

I, CLEMENT R. WILLIAMS, OF ROCK SPRINGS, WYOMING, HEREBY STATE: THIS MAP WAS MADE FROM NOTES TAKEN DURING AN ACTUAL FIELD SURVEY DONE UNDER MY DIRECT SUPERVISION ON APRIL 9, 2011 AND THAT THIS PLAT CORRECTLY SHOWS THE LOCATION OF BELLMORE 21-9-66 1H AS STAKED ON THE GROUND.

LEGEND

- ◆ WELL LOCATION
- BOTTOM HOLE LOC. (APPROX)
- FOUND MONUMENT
- ▲ PREVIOUSLY FOUND MONUMENT



RIFFIN & ASSOCIATES, INC.
1414 ELK ST., ROCK SPRINGS, WY 82901

(307) 362-5028

DRAWN: 4/19/11 - MMM

REVISED: NA

SCALE: 1" = 1000'

DRG JOB No. 18552

EXHIBIT 1

**PLAT OF DRILLING LOCATION
FOR
CHESAPEAKE ENERGY, LLC.**

**300' F/SL & 1980' F/WL, SESW, SECTION 16,
T. 9 N., R. 66 W., 6th P.M.
WELD COUNTY, COLORADO**