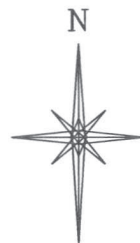
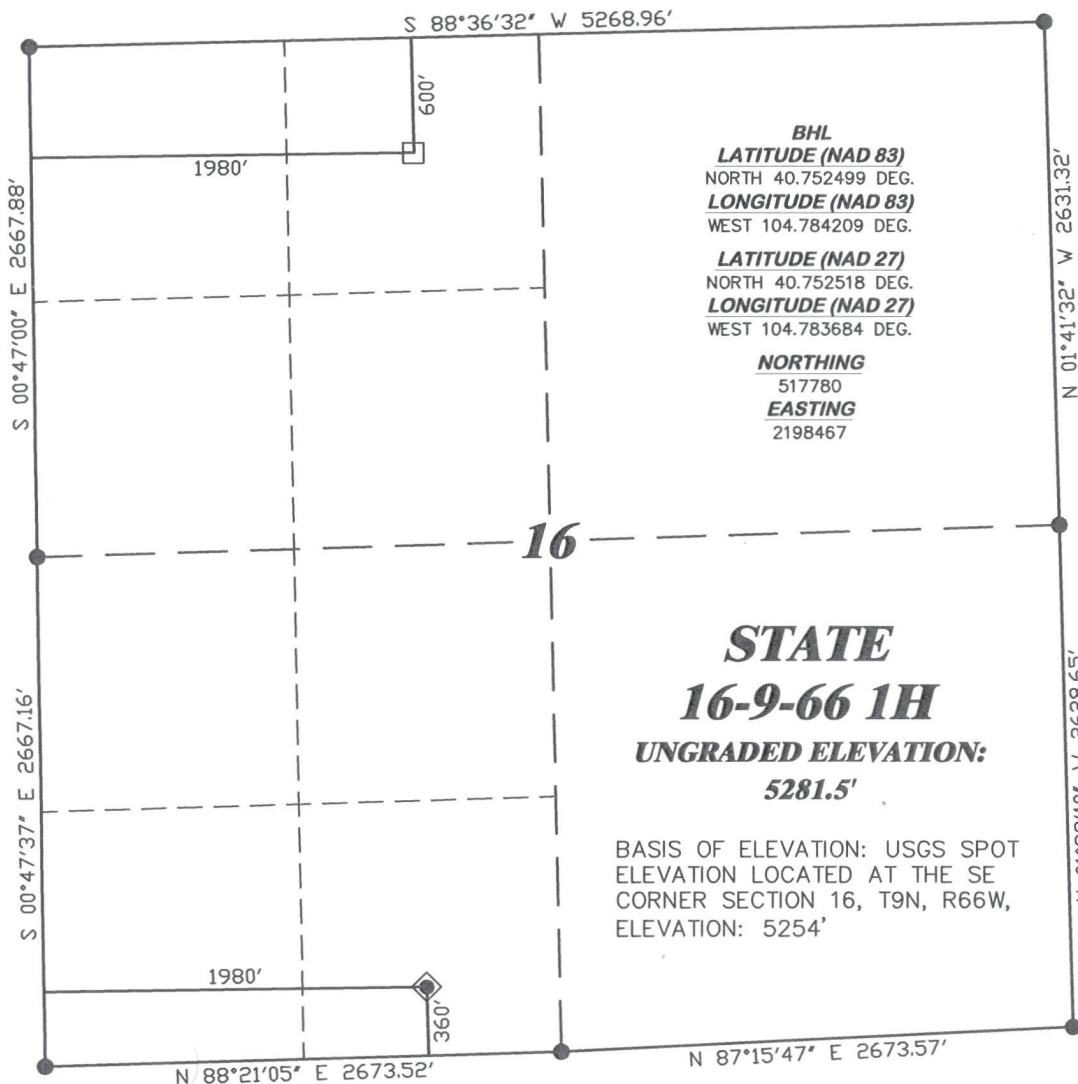


R. 66 W.



SCALE 1" = 1000'

T. 9 N.

BHL
LATITUDE (NAD 83)
NORTH 40.752499 DEG.
LONGITUDE (NAD 83)
WEST 104.784209 DEG.

LATITUDE (NAD 27)
NORTH 40.752518 DEG.
LONGITUDE (NAD 27)
WEST 104.783684 DEG.

NORTHING
517780
EASTING
2198467

LATITUDE (NAD 83)
NORTH 40.740515 DEG.
LONGITUDE (NAD 83)
WEST 104.784120 DEG.

LATITUDE (NAD 27)
NORTH 40.740535 DEG.
LONGITUDE (NAD 27)
WEST 104.783595 DEG.

NORTHING
513414.41
EASTING
2198527.11

16
STATE
16-9-66 1H
UNGRADED ELEVATION:
5281.5'

BASIS OF ELEVATION: USGS SPOT
ELEVATION LOCATED AT THE SE
CORNER SECTION 16, T9N, R66W,
ELEVATION: 5254'

BASIS OF BEARING/DATUM
SPCS CO NORTH NAD 27
BASED ON DRG CONTROL
POINT "16-9-66"

NOTES

PRAIRIE LANDS
EXISTING COUNTY ROAD WITHIN
400' RADIUS OF WELL SITE.

GPS OPERATOR PAUL ORME
OBSERVED A PDOP OF 2.2.
ALL GPS OBSERVATIONS ARE IN
COMPLIANCE WITH COGCC RULE No.215.

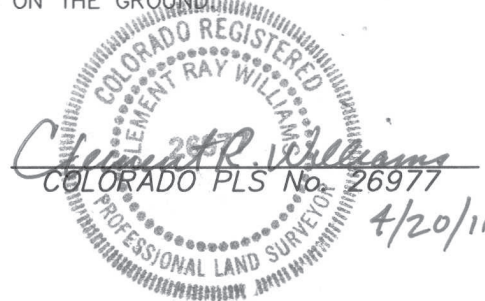


SURVEYOR'S STATEMENT

I, CLEMENT R. WILLIAMS, OF ROCK SPRINGS, WYOMING, HEREBY STATE: THIS MAP WAS MADE FROM NOTES TAKEN DURING AN ACTUAL FIELD SURVEY DONE UNDER MY DIRECT SUPERVISION ON APRIL 9, 2011 AND THAT THIS PLAT CORRECTLY SHOWS THE LOCATION OF STATE 16-9-66 1H AS STAKED ON THE GROUND.

LEGEND

- ◆ WELL LOCATION
- BOTTOM HOLE LOC. (APPROX)
- FOUND MONUMENT
- ▲ PREVIOUSLY FOUND MONUMENT



(307) 362-5028

RIFFIN & ASSOCIATES, INC.
1414 ELK ST., ROCK SPRINGS, WY 82901

DRAWN: 4/19/11 - MMM

REVISED: NA

SCALE: 1" = 1000'

DRG JOB No. 18552

EXHIBIT 1

**PLAT OF DRILLING LOCATION
FOR
CHESAPEAKE ENERGY, LLC.**

**360' F/SL & 1980' F/WL, SESW, SECTION 16,
T. 9 N., R. 66 W., 6th P.M.
WELD COUNTY, COLORADO**