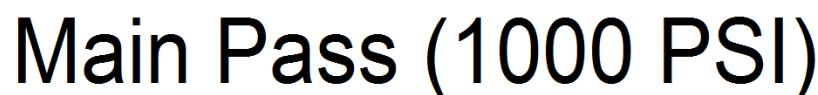




<<< Fold Here >>>
All interpretations are opinions based on inferences from electrical or other measurements and we cannot and do not guarantee the accuracy or correctness of any interpretation, and we shall not, except in the case of gross or willful negligence on our part, be liable or responsible for any loss, costs, damages, or expenses incurred or sustained by anyone resulting from any interpretation made by any of our officers, agents or employees. These interpretations are also subject to our general terms and conditions set out in our current Price Schedule.
Comments
Log Ran under 1000 PSI. Directions: Sarcillo right to La Garita, at Y stay left towards Cottontail Compressor, first left at arrowhead lane(line of mail boxes), at Y stay left, next Y stay left, at three way stay left to location.

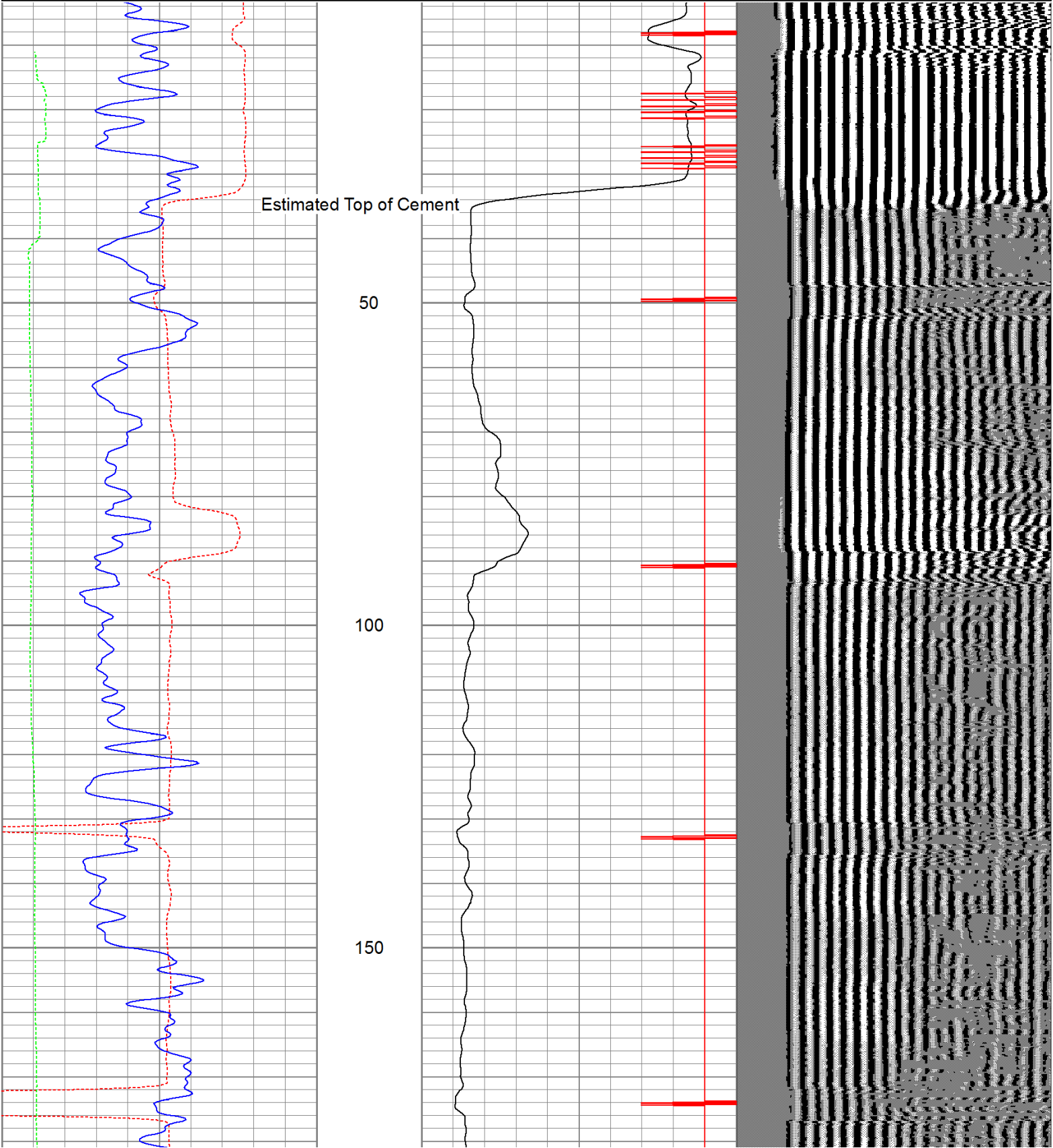


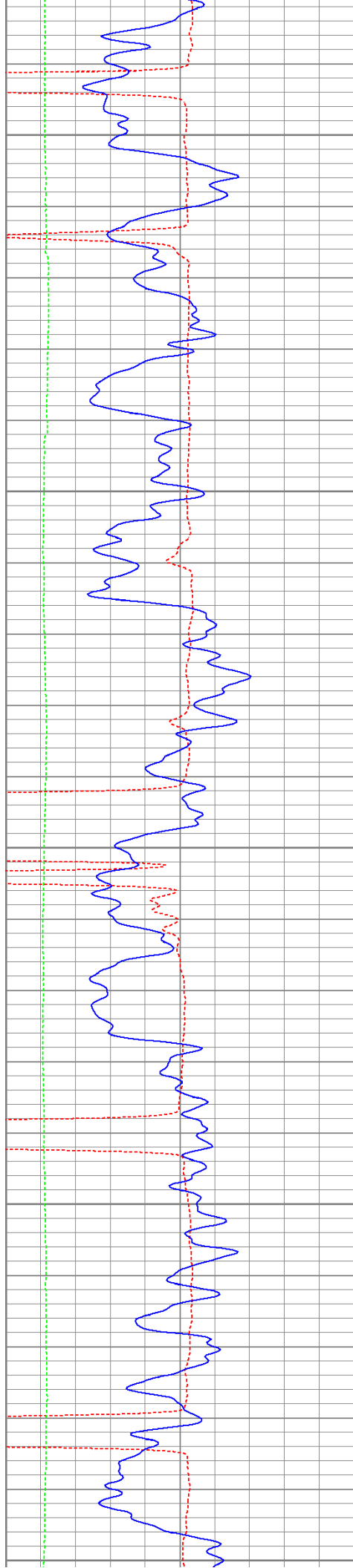
Database File: hellzapoppintr52511b.db
Dataset Pathname: pass2.1
Presentation Format: cbldig
Dataset Creation: Wed May 25 17:29:58 2011 by Calc Open-Cased 110302
Charted by: Depth in Feet scaled 1:240

400	Travel Time (usec)	200
0	GR (GAPI)	200
0	DEVI (°)	10

0	Amplitude (mV)	100
9	Collar Locator	-1

200 Variable Density 1200





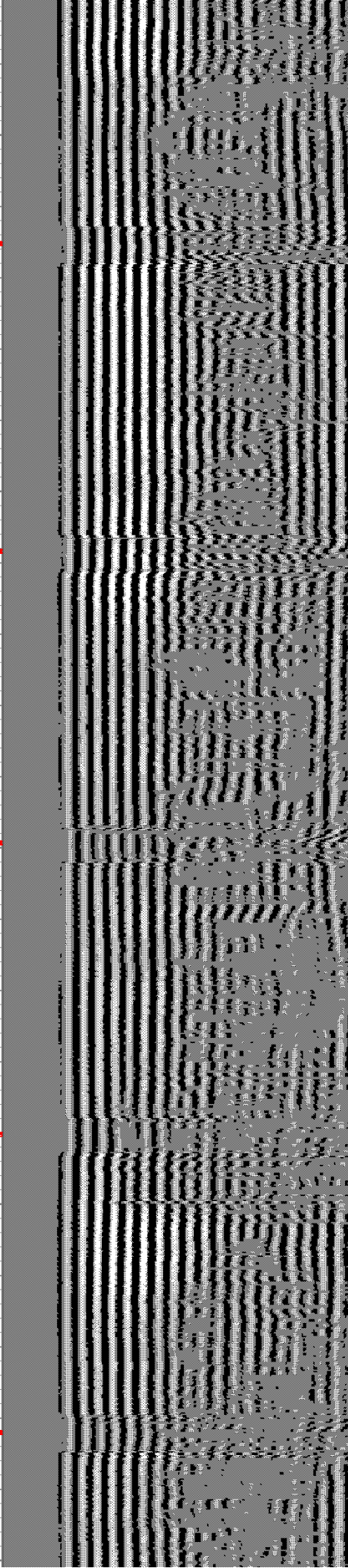
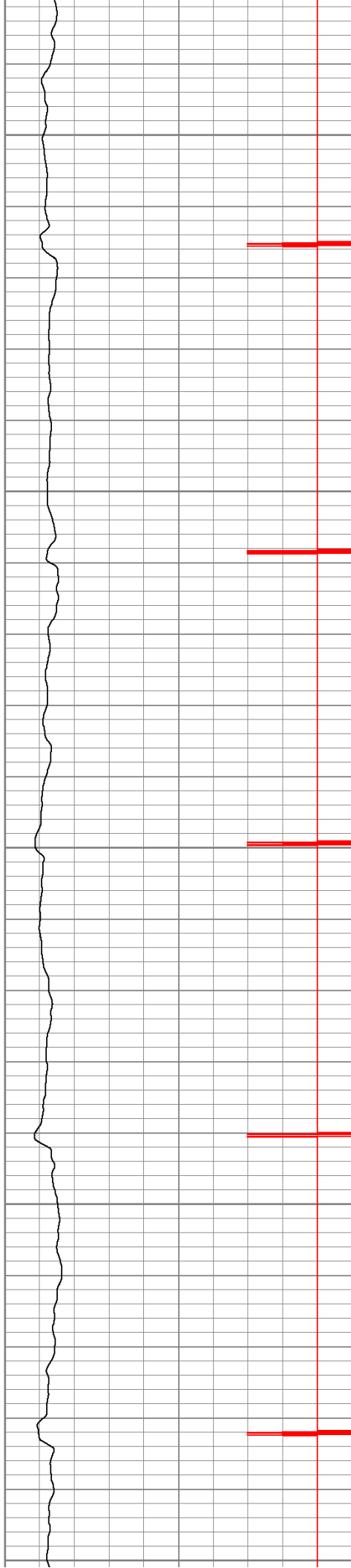
200

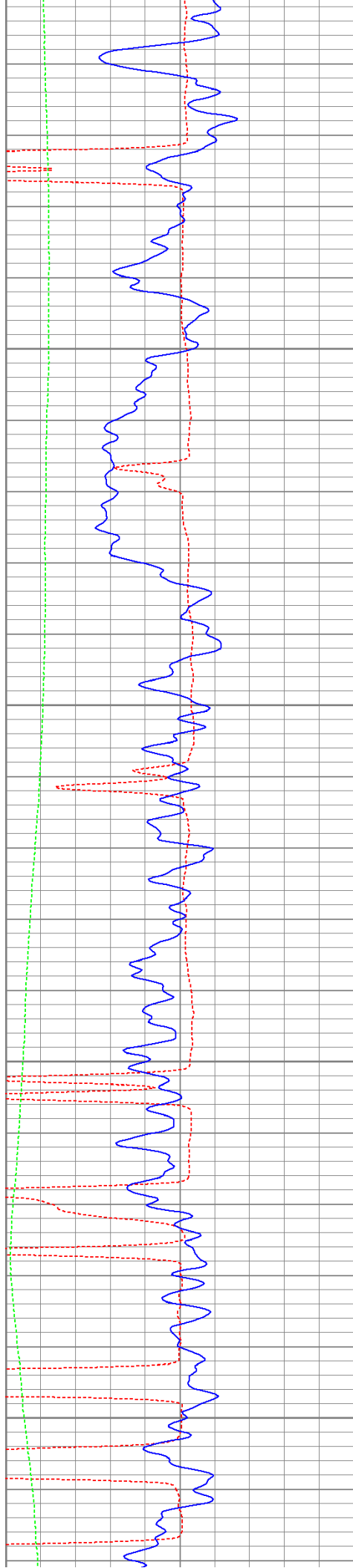
250

300

350

400



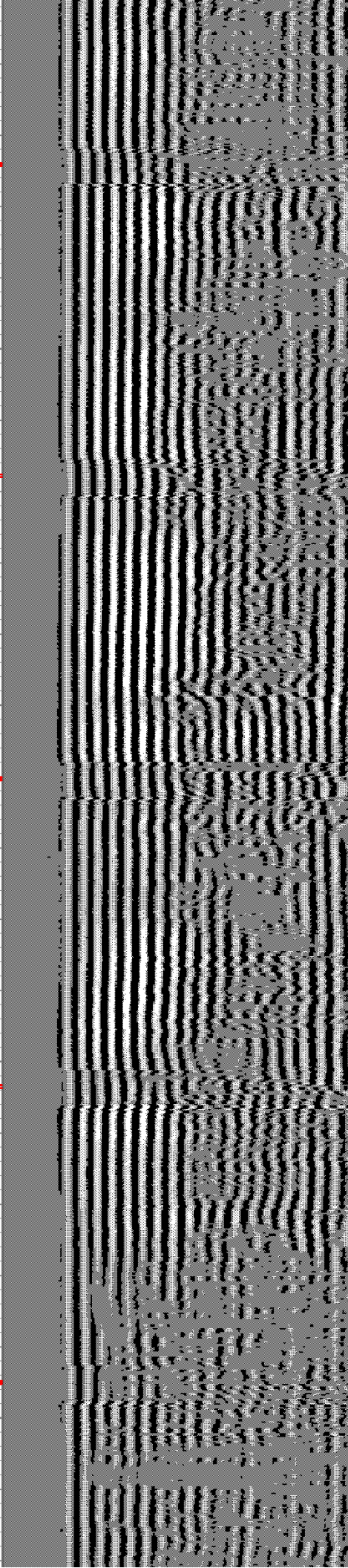
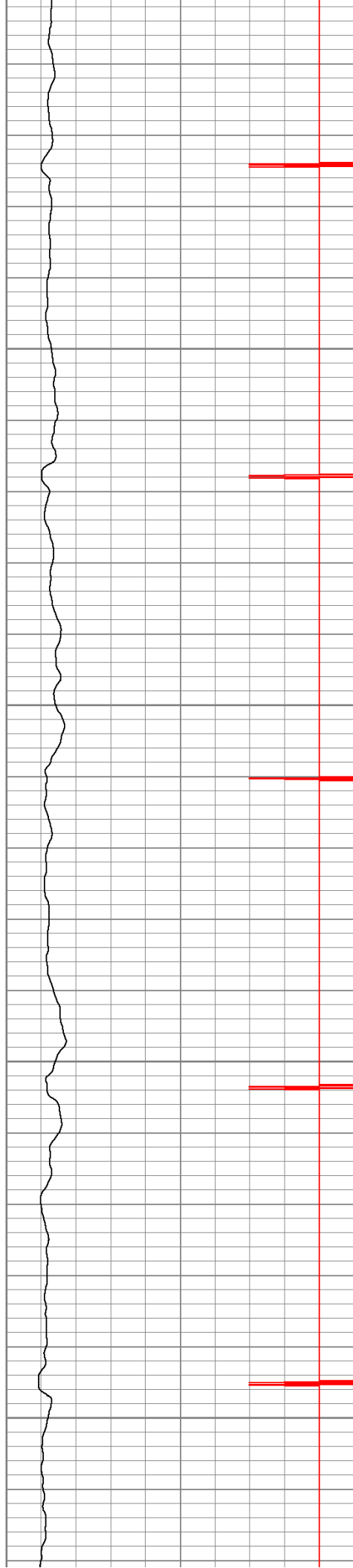


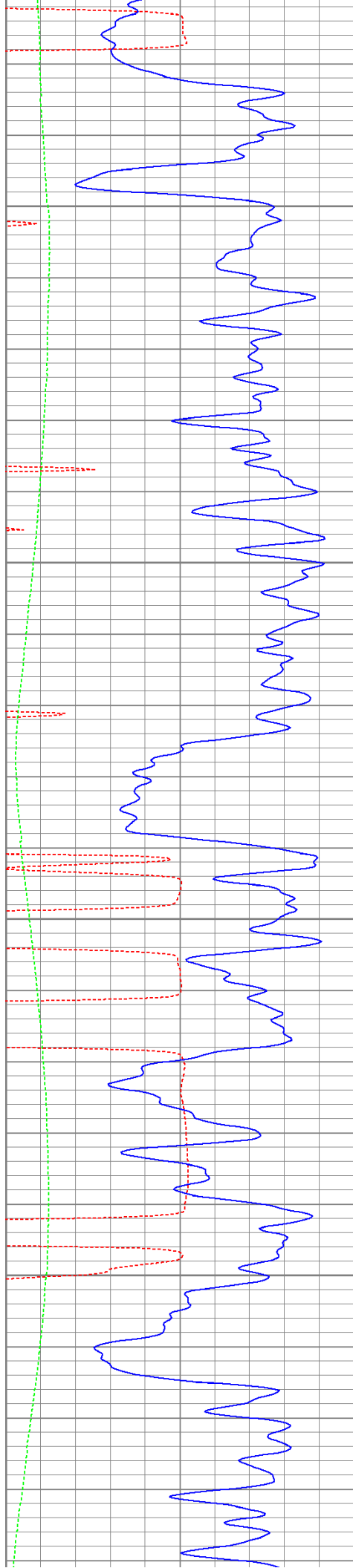
450

500

550

600



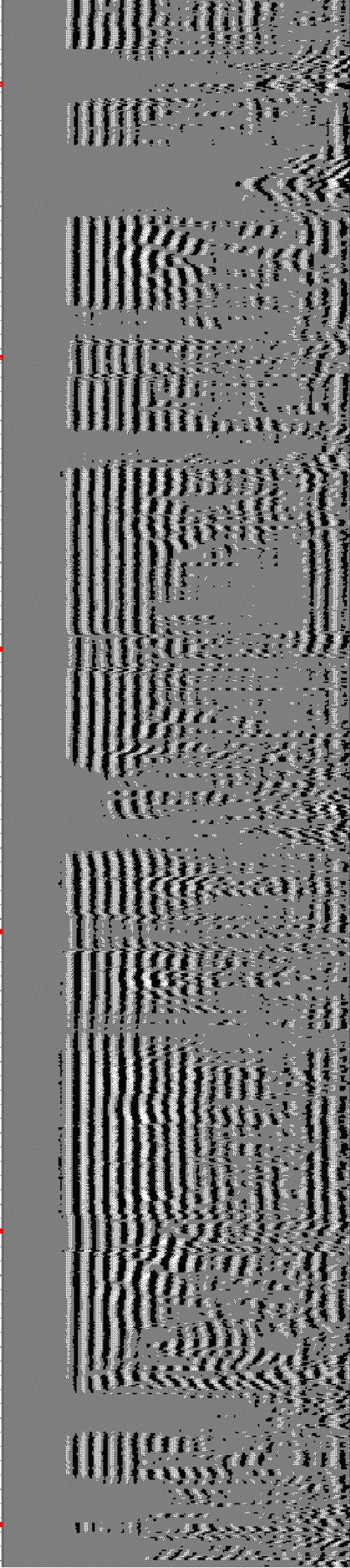
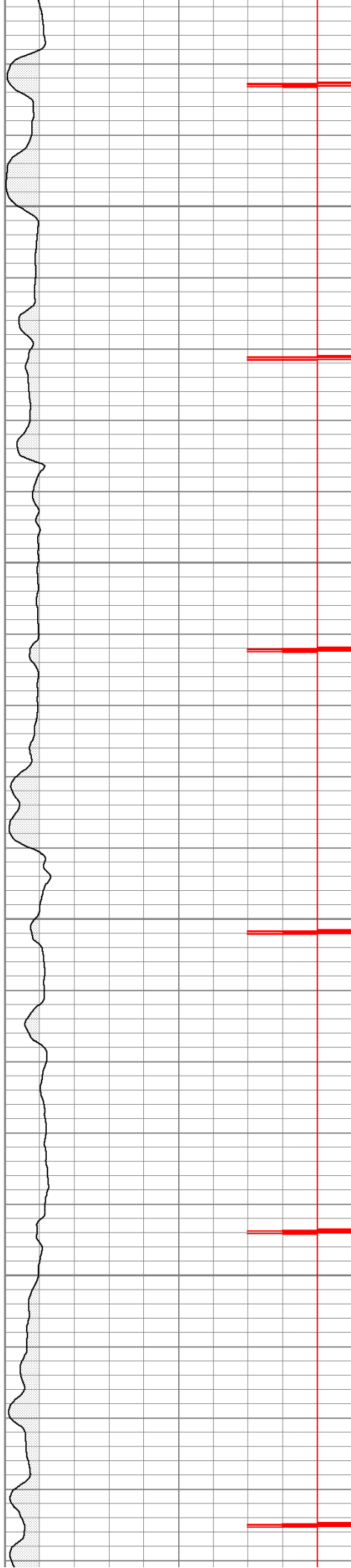


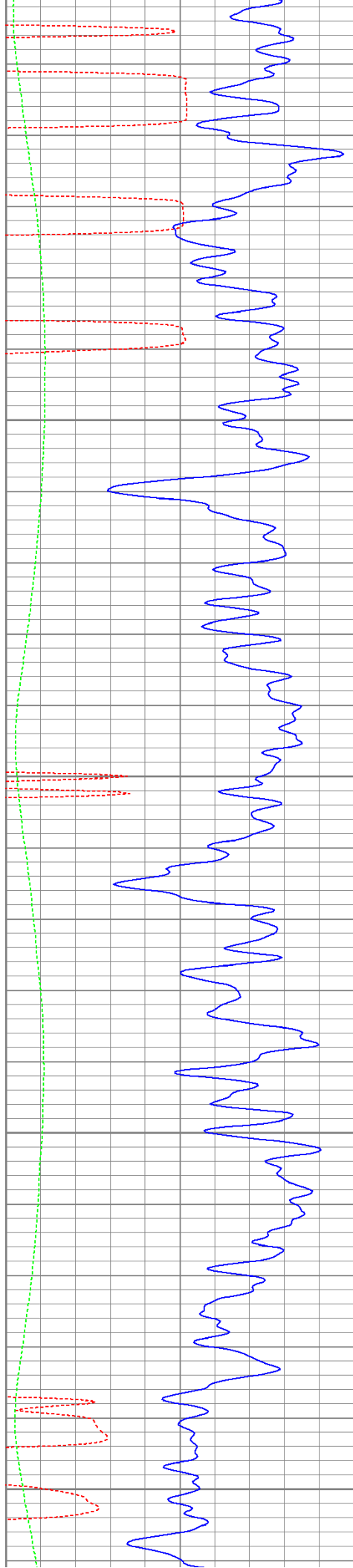
650

700

750

800





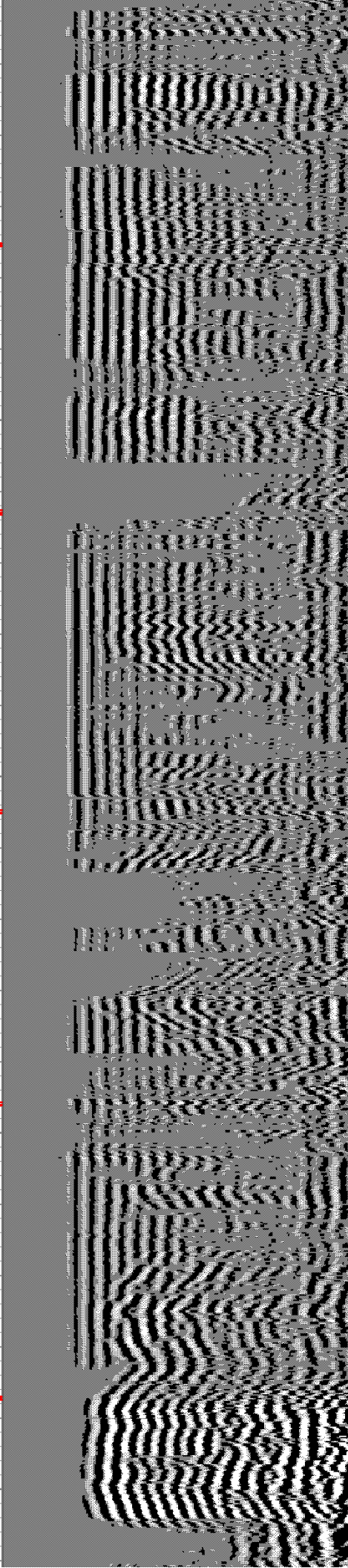
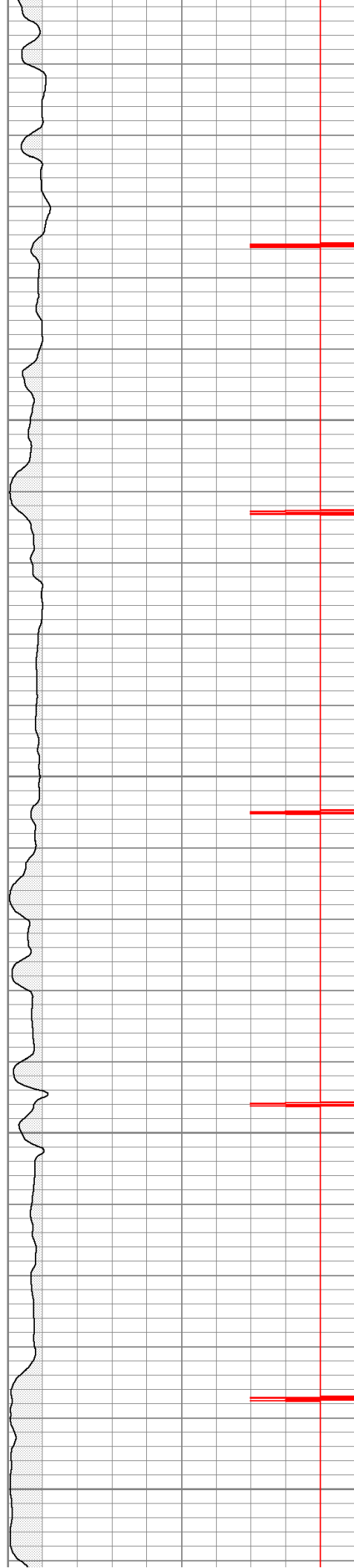
850

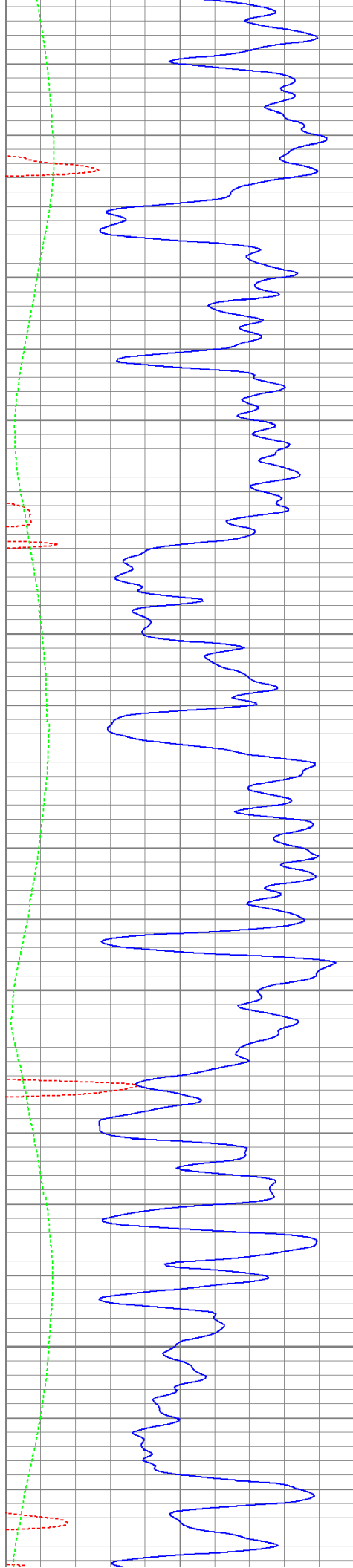
900

950

1000

1050



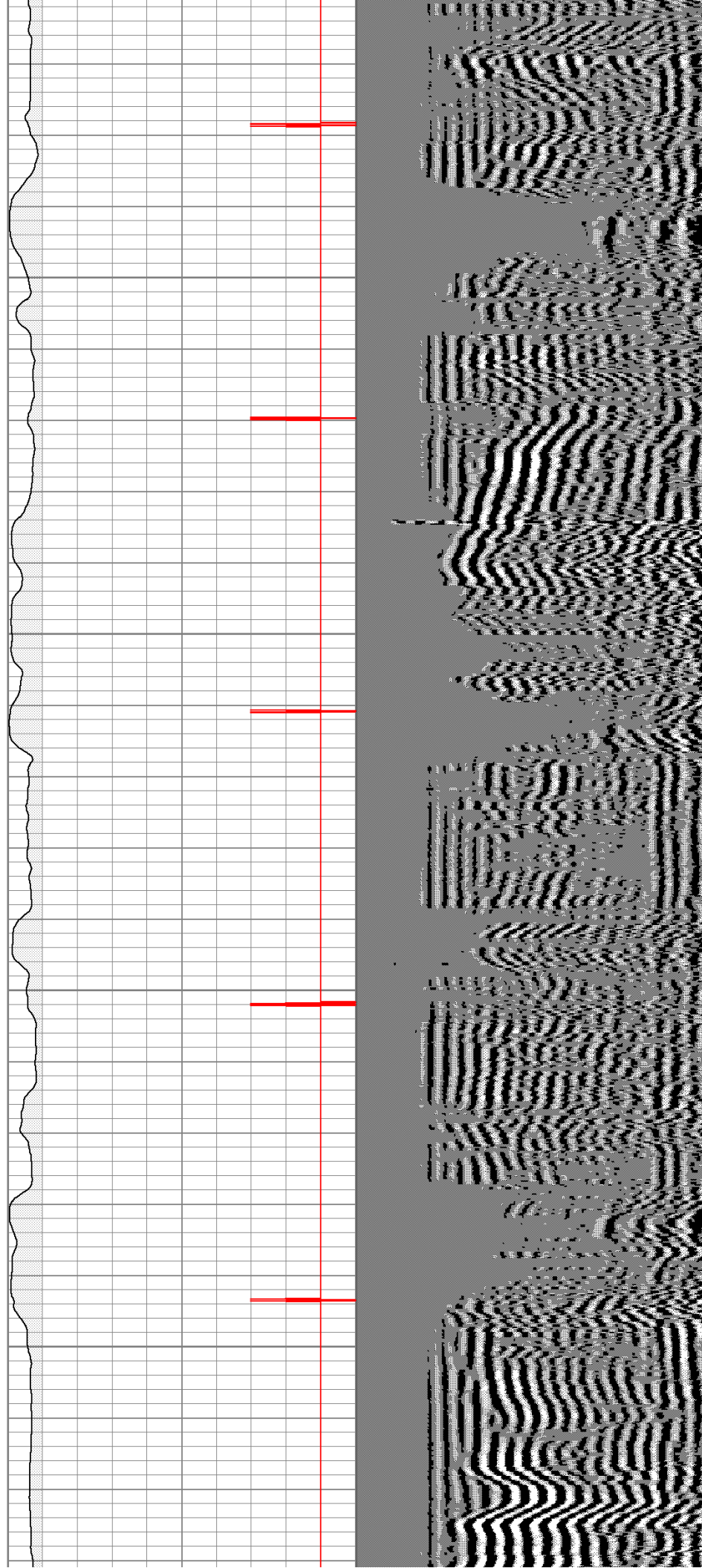


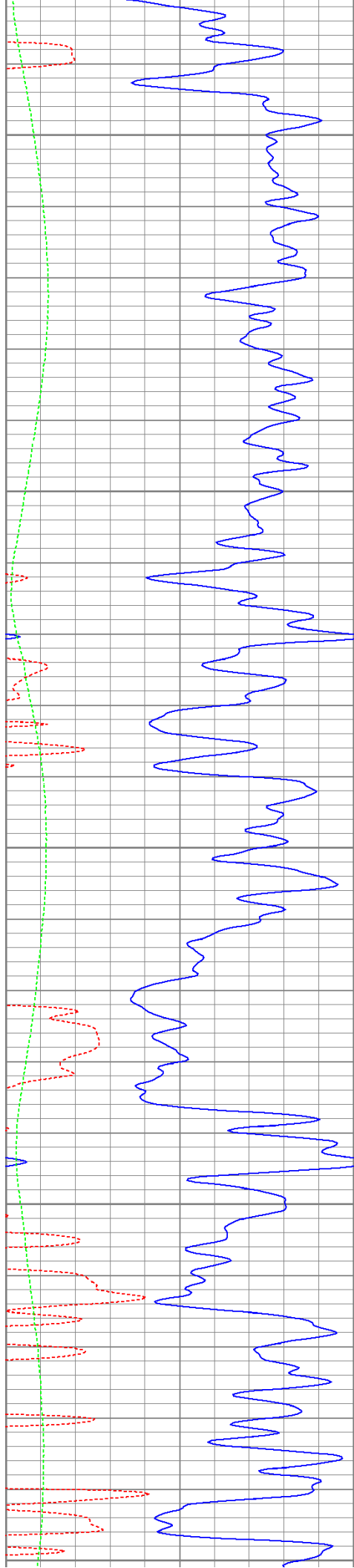
1100

1150

1200

1250





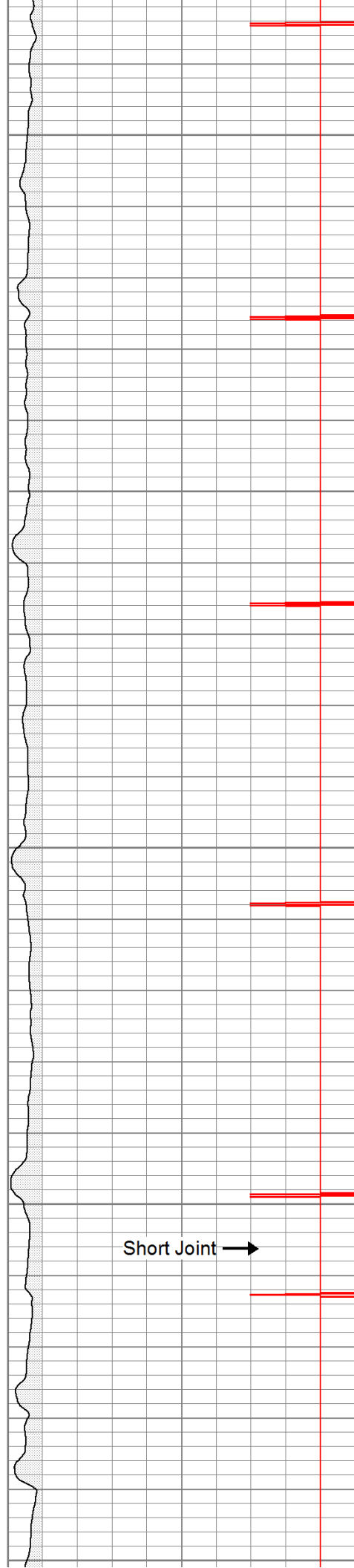
1300

1350

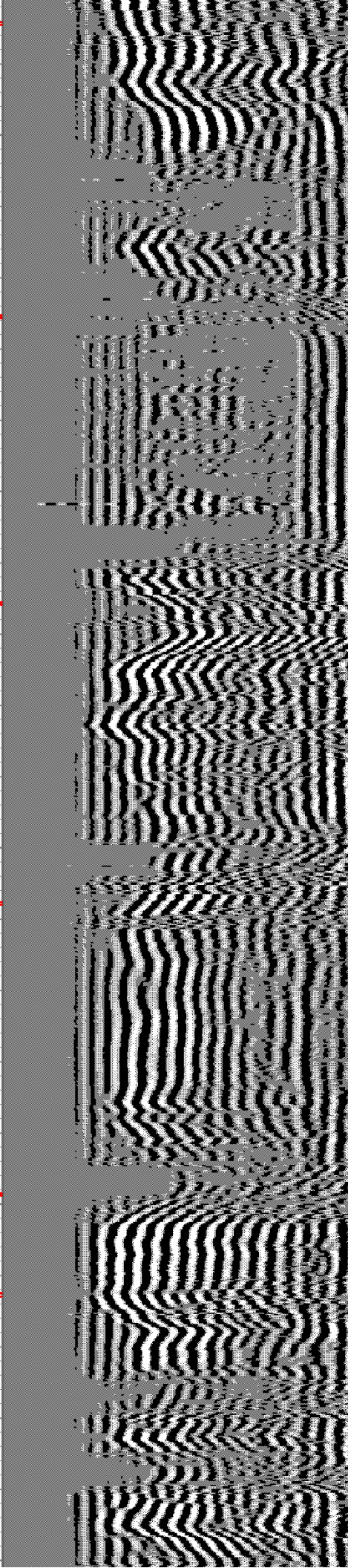
1400

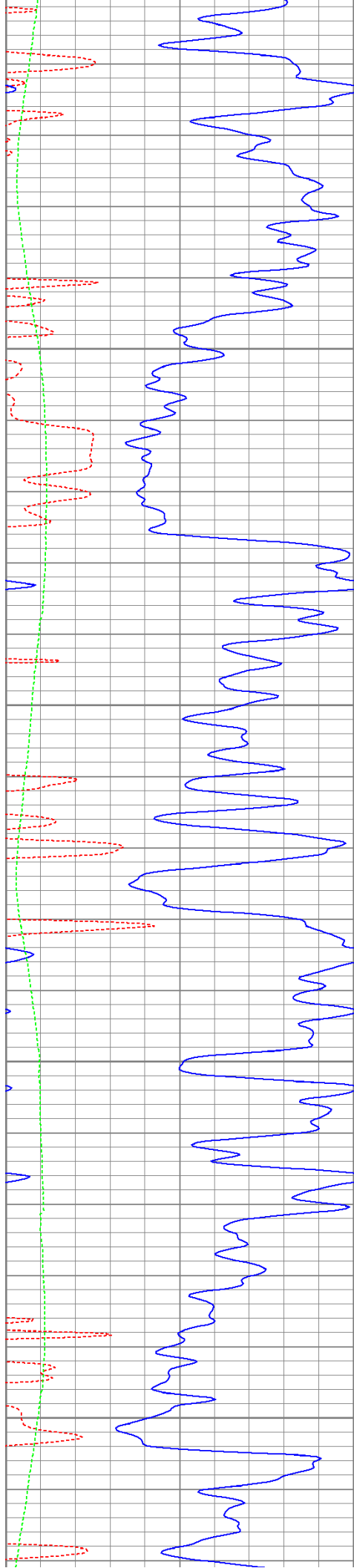
1450

1500



Short Joint →



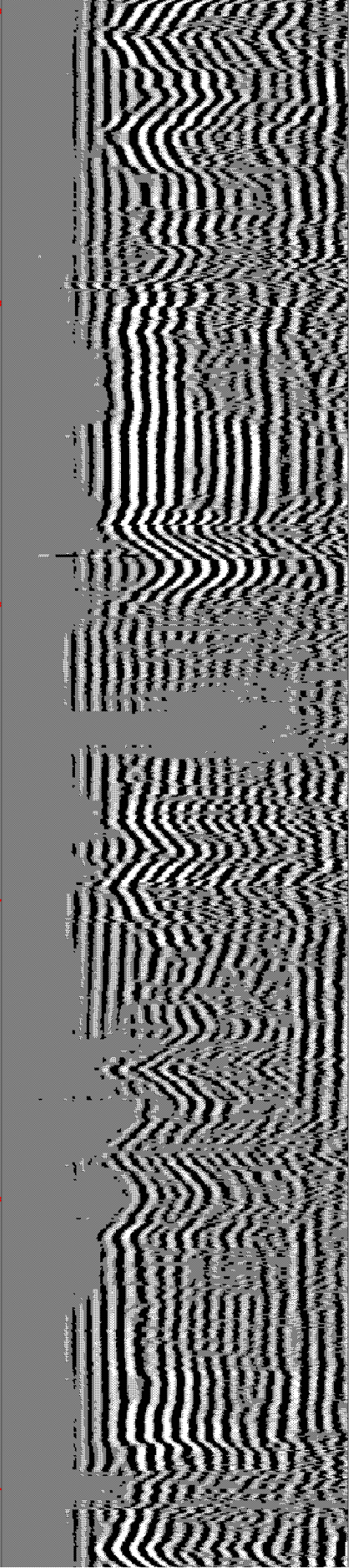
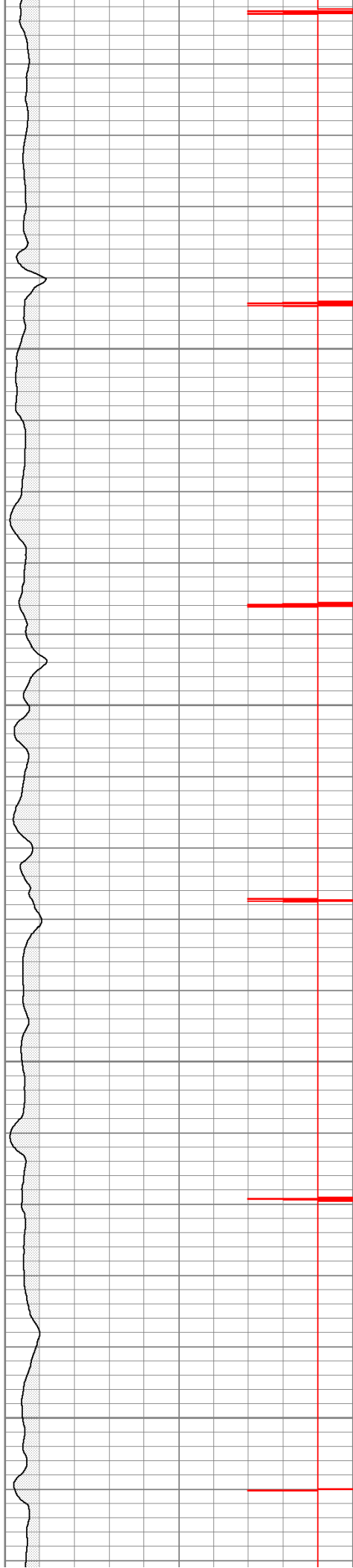


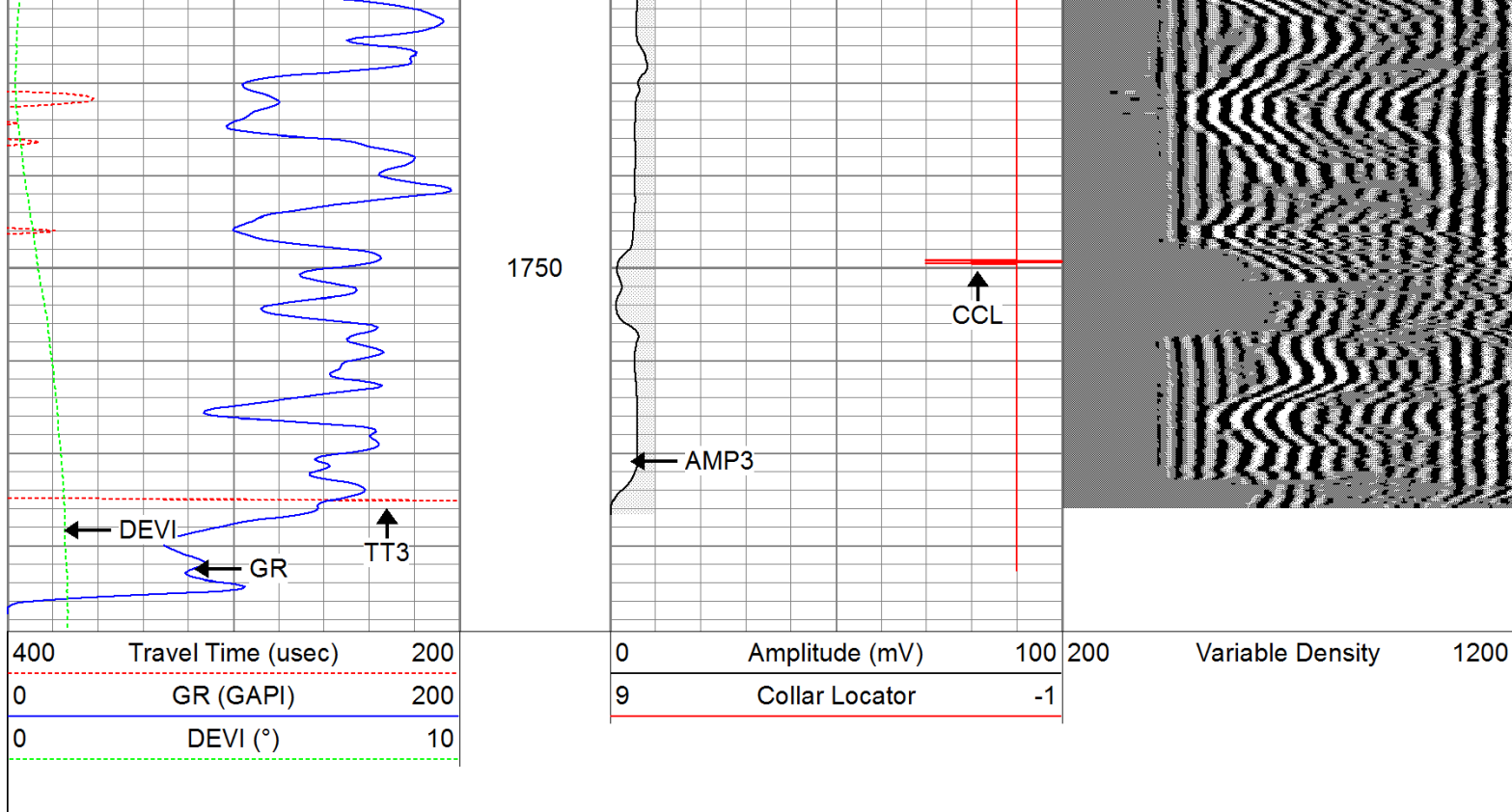
1550

1600

1650

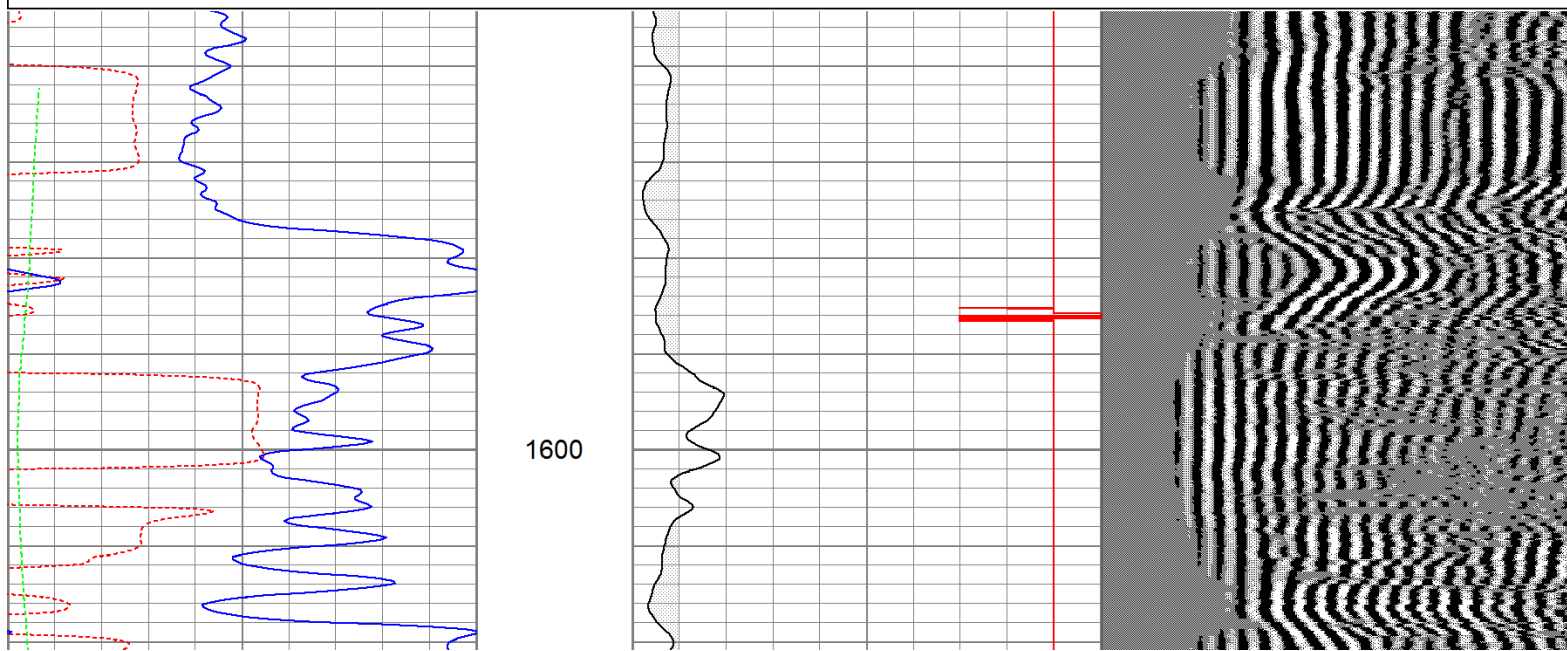
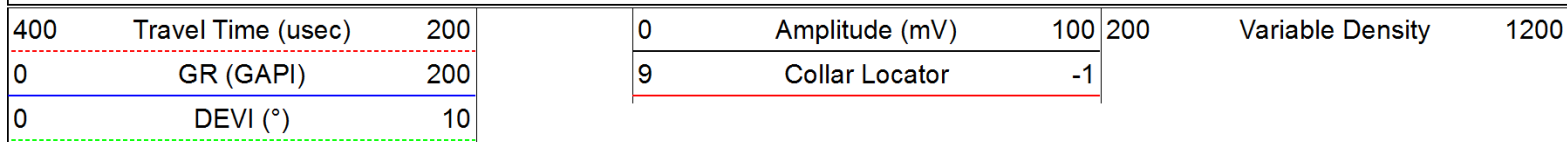
1700

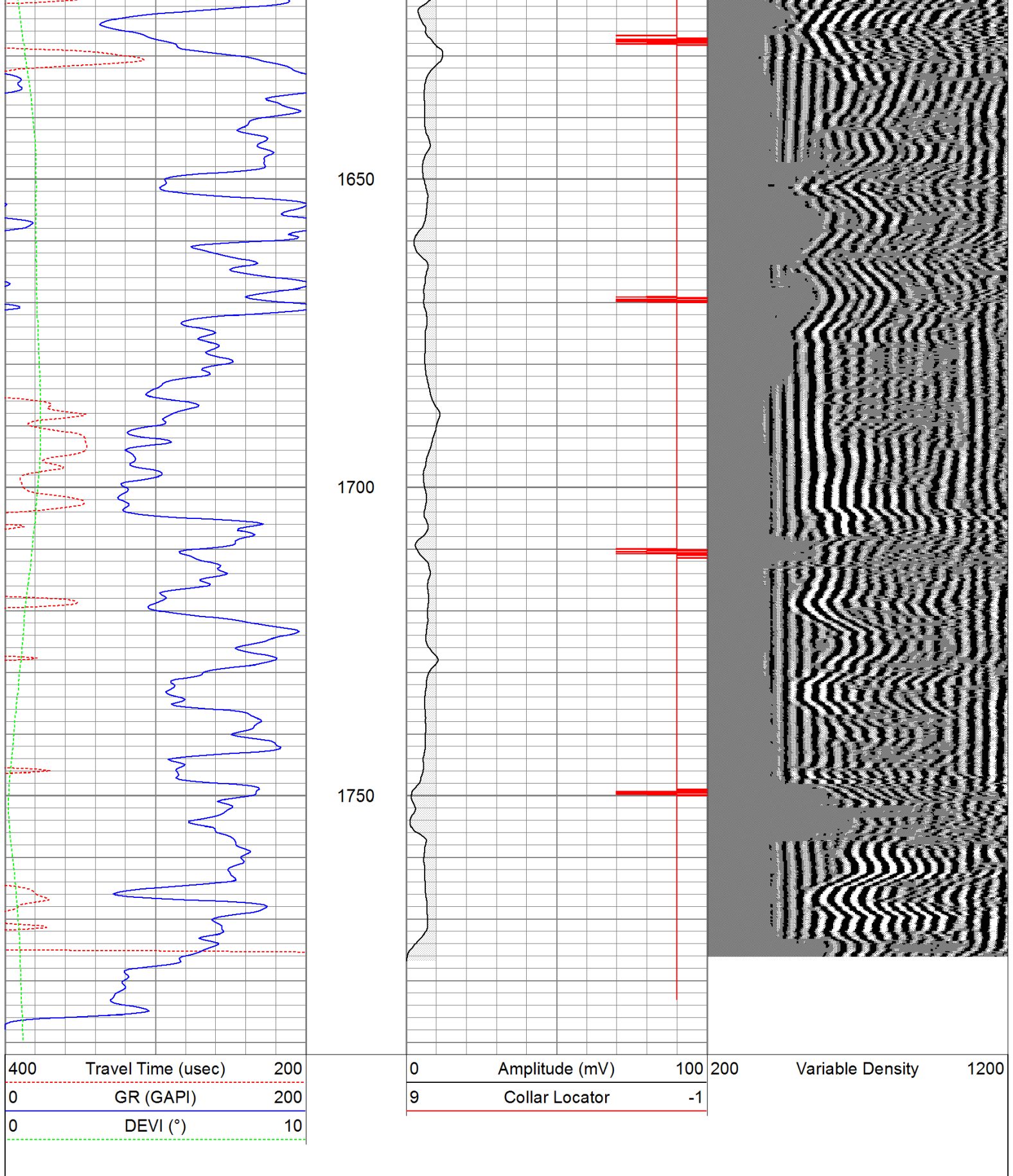




Repeat Pass

Database File: hellzapoppintr52511b.db
 Dataset Pathname: pass1
 Presentation Format: cbldig
 Dataset Creation: Wed May 25 16:36:40 2011 by Log Open-Cased 110302
 Charted by: Depth in Feet scaled 1:240





Calibration Report

Database File: hellzapoppintr52511b.db
Dataset Pathname: pass1
Dataset Creation: Wed May 25 16:36:40 2011 by Log Open-Cased 110302

Gamma Ray Calibration Report

Serial Number: 080616
 Tool Model: 275D_INC
 Performed: Wed May 04 17:31:09 2011

Calibrator Value: 200.0 GAPI
 Background Reading: 50.0 cps
 Calibrator Reading: 250.0 cps
 Sensitivity: 1.0000 GAPI/cps

Inclinometer Calibration Report

Performed: Wed May 04 17:39:54 2011

	Low Read.	High Read.	Low Ref.	High Ref.	
X Accelerometer	-3585.20	3595.40	-1.00	1.00	gee
Y Accelerometer	-3619.40	3520.00	-1.00	1.00	gee
Z Accelerometer					

Cement Bond Log Calibration Report

Serial Number: 081024
 Tool Model: PROBEDIITALCBL
 Performed: Wed May 25 11:26:37 2011

Depth:	45.379	ft
Casing Diameter:	5.5	in
	3' Spacing	5' Spacing
Signal Zero:	0	0 mV
Calibrated Amplitude:	85	85 mV
Reading at Signal Zero:	-0.00598145	-0.00627441 V
Reading in Free Pipe:	1.45662	1.23376 V
Gain:	58.1158	68.5462
Offset:	0.347616	0.430087

Sensor	Offset (ft)	Schematic	Description	Len (ft)	OD (in)	Wt (lb)
			None	0.75	1.50	5.00
WVF3	14.54		CBL-PROBEDIITALCBL (081024)	8.75	2.75	106.50
WVF5	13.54		PROBE DIGITAL CBL			
			Tekco	2.90	1.69	5.00
CCL	6.40		GR-275D INC (080616)	4.50	2.75	50.00

